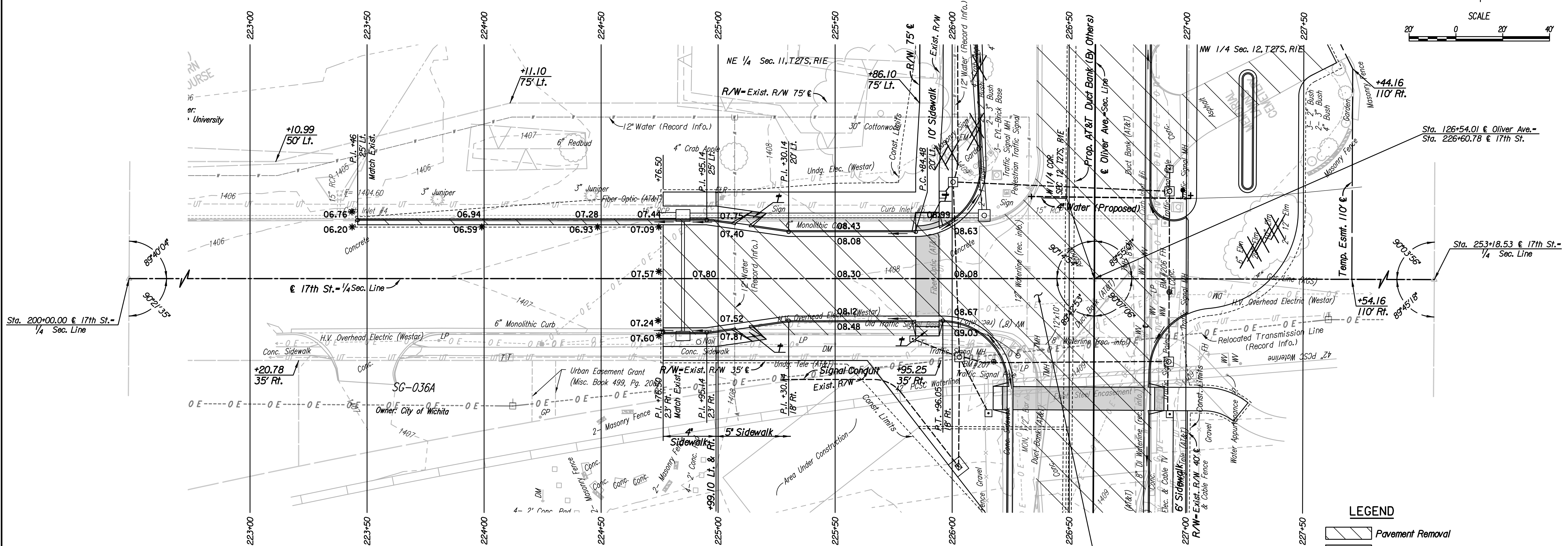
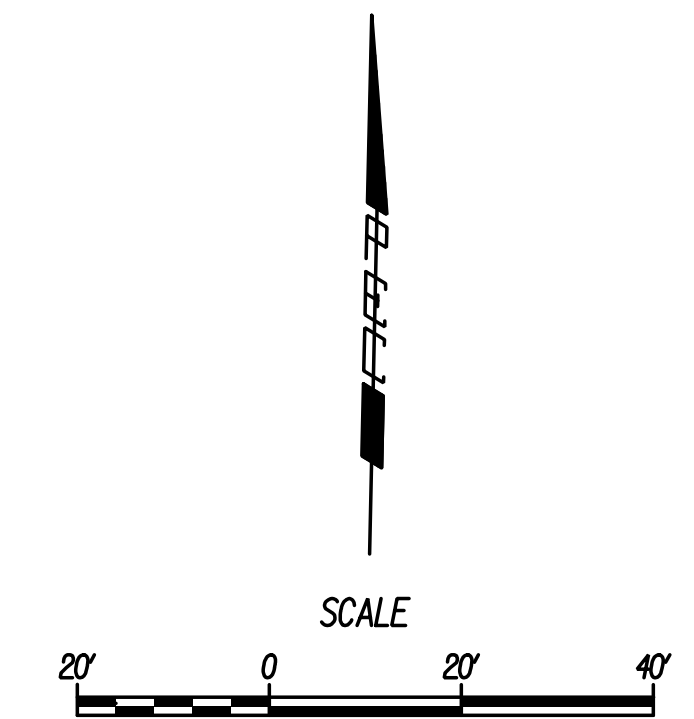
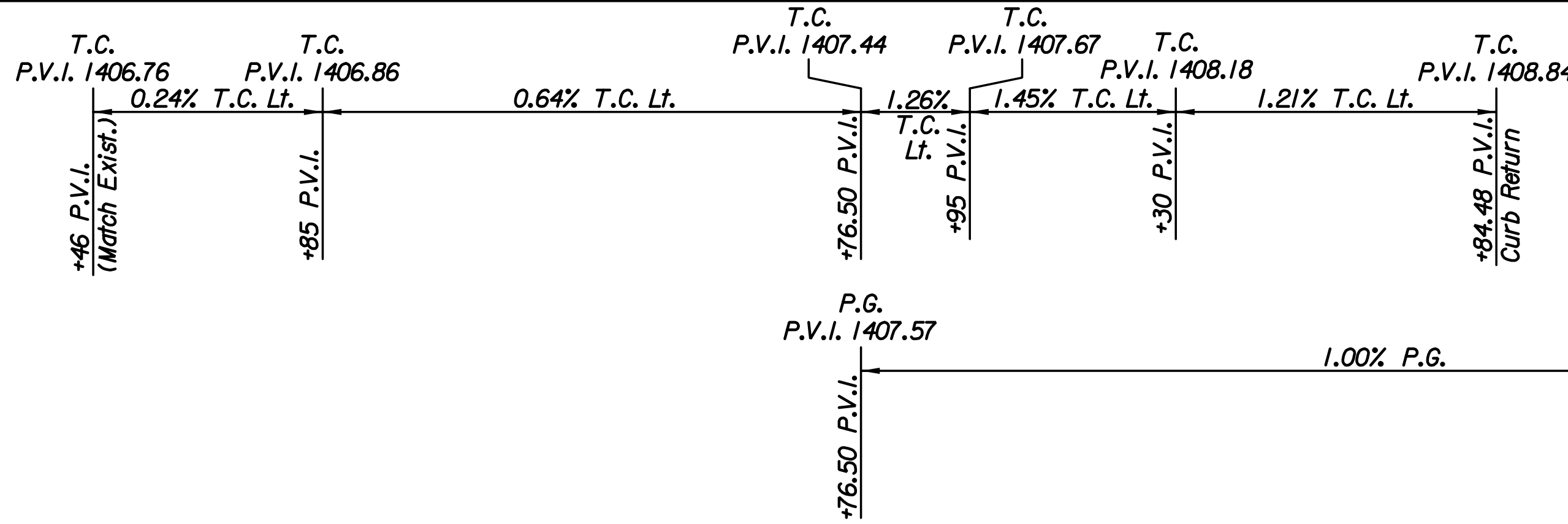


P.I. & Sta. 200+00-
Center Cor. Sec. 11, T27S, R1E
I. See References below

P.I. & Sta. 226+60.78-
W 1/4 Cor. Sec. 12, T27S, R1E
I. See References below

P.I. & Sta. 253+18.53-
Center Cor. Sec. 12, T27S, R1E
I. See References below



STATION	SIDE	ITEM
225+22	Lt.	Sign
225+85	Lt.	Curb Inlet
225+85	Lt.	110 L.F. 15" RCP (W)

* For Information Only

	Pavement Removal
	Brick Pavers
	Match Existing
	Wheelchair Ramp w/ Detectable Warning
	Denotes trees to be removed

- Center Cor. Sec. 11, T27S, R1E
- Found 3/4" iron pipe in thimble half-way between Bluff St. and Gentry St. and in E of 17th St.
 - N 1,696,536.690 E 1,662,370.990
 - Pk nail in west face of power pole 28.70' SSE
 - Pk nail in north face of power pole 58.87' SW
 - Center of city of wichita brass disk bench mark 49.01' NE
 - Pk nail 0.1' inside west face of 15" dia. osage tree, southwest 1 of 3 trees. 40.54' NNE
 - Chiseled cross on top of north curb of 17th street at 40' cottonwood tree 73.54' ENE

- W 1/4 Cor. Sec. 12, T27S, R1E
- Found 1/2" iron pipe in thimble at intersection of E of 17th St. N. and Oliver Ave. 44.69' NW
 - N 1,696,593.770 E 1,665,029.920 51.03' NW
 - Chiseled cross on top of curb at midpoint of curve 38.13' NE
 - Southeast corner of concrete pad for cross walk signal light pole 28.38' ESE
 - Southwest bolt for base of traffic signal light pole
 - Pk nail in north face of power pole

- Center Cor. Sec. 12, T27S, R1E
- Found 1" iron pipe 0.2' deep 10.95' SW
 - N 1,696,645.266 E 1,667,687.563 2.00' W
 - Mag nail east face of fence post 3.87' S
 - Mag nail in east face of 4" hedge post stump 15.00' S
 - Mag nail in north face of 6' elm
 - Chainlink fence east-west

BM *207 - Chiseled square with bolt and washer in center at the southeast corner of traffic signal manhole pad at the southwest corner of Oliver Ave. and 17th St. 42.79' Lt. E Sta. 126+18.22 NAVD88 Elev.=1409.14

BM *206 - Chiseled square on southwest corner of traffic signal box pad on east side of Oliver Ave. at 17th St. extended. 32.03' Rt. E Sta. 126+48.41 NAVD88 Elev.=1411.18

Plotted By: sheldon.bfn@date: 12/14/2017 4:35:11 PM
 FILE: U:\Wichita-Civil\2015\15081\Road\17th St.dgn

Revision		By	Date
17TH STREET AND OLIVER INTERSECTION			
17TH STREET PLAN			
STA. 223+00 TO STA. 227+50			
GARY JANZEN, P.E.-CITY ENGINEER CITY OF WICHITA PROJECT NO. 472-85214			
PEC PROFESSIONAL ENGINEERING CONSULTANTS, P.A. 303 SOUTH TOPEKA WICHITA, KS 67202 316-262-2691 www.pec1.com			
Designed by	CKC	Job No.	15081
Drawn by	CP, SVB	Date	Dec., 2017
			Sh. 11 of 107