

Sta. 6+25.0 SWS Line No. 202-  
Sta. 137+25, 25' Rt. & Oliver Ave.  
Construct Std. Type I Curb Inlet  
L=10'-0" W=3'-0" H=4'-0"  
See Sh. No. 31, 33, 37

Sta. 201+18.6 SWS Line No. 200-  
Sta. 5+00.0 SWS Line No. 202-  
Sta. 136+00, 25' Rt. & Oliver Ave.  
Construct Std. Type I Curb Inlet  
L=10'-0" W=3'-0" H=5'-0"  
Install 24" x 75.0' SWS (RCP)KS  
Install 18" x 125.0' SWS (RCP)KN  
See Sh. No. 31, 33, 37

Sta. 201+93.6 SWS Line No. 200-  
Sta. 135+25, 25' Rt. & Oliver Ave.  
Construct Std. Type I Curb Inlet  
L=10'-0" W=3'-0" H=4'-3"  
Install 18" x 75.0' SWS (RCP)KS  
See Sh. No. 31, 33, 37

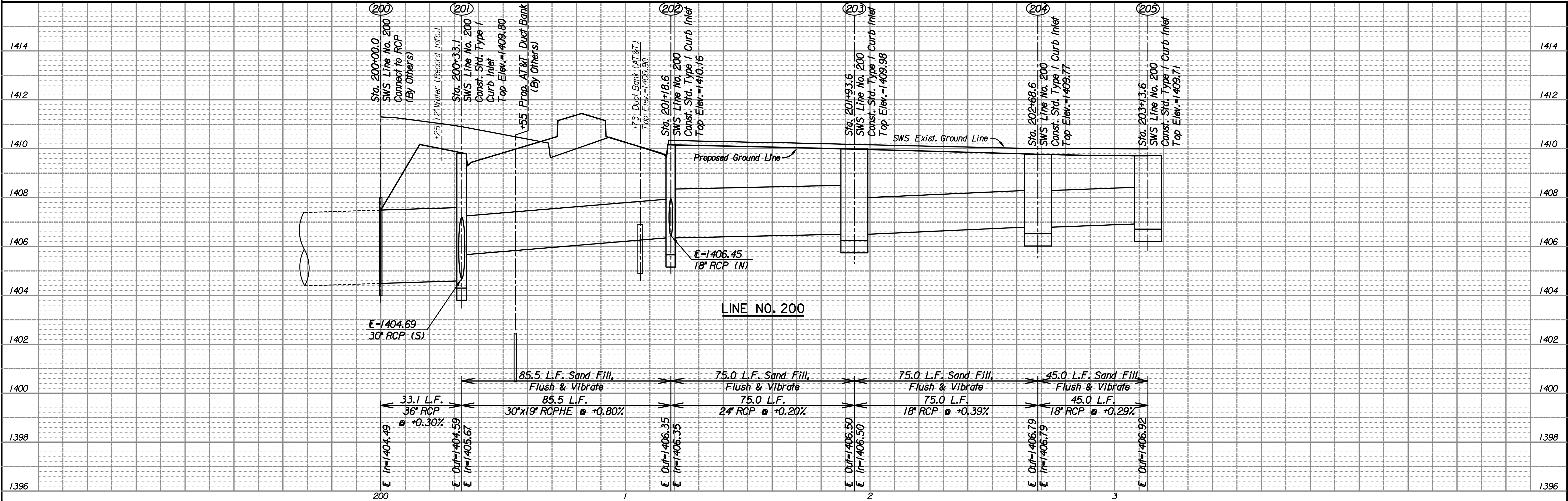
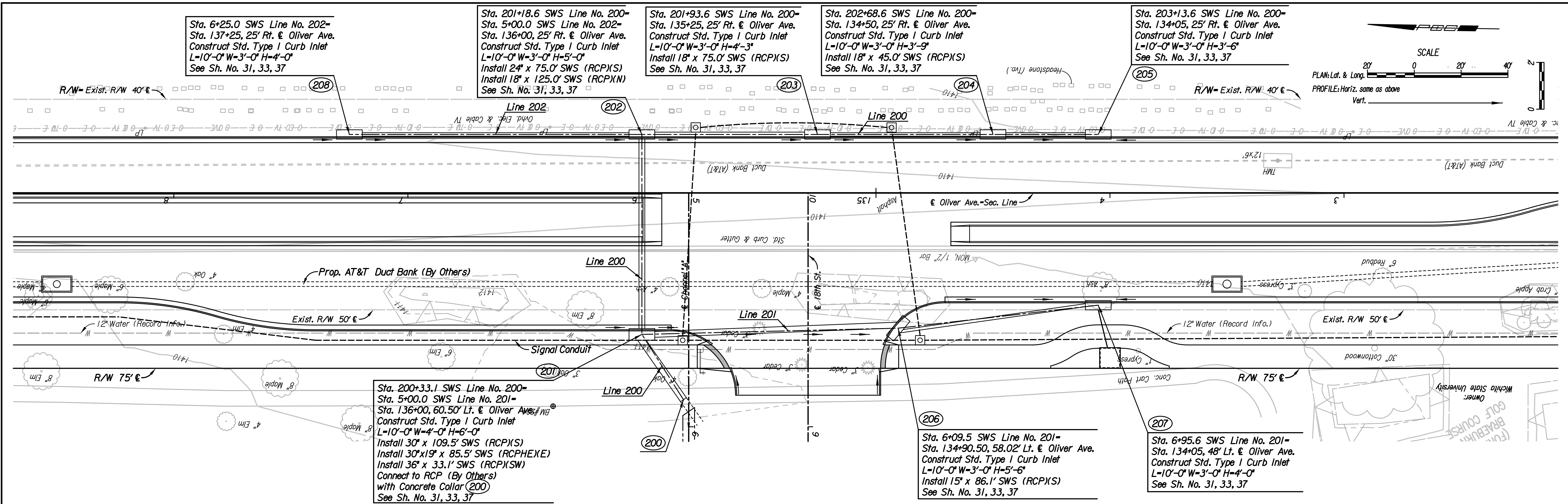
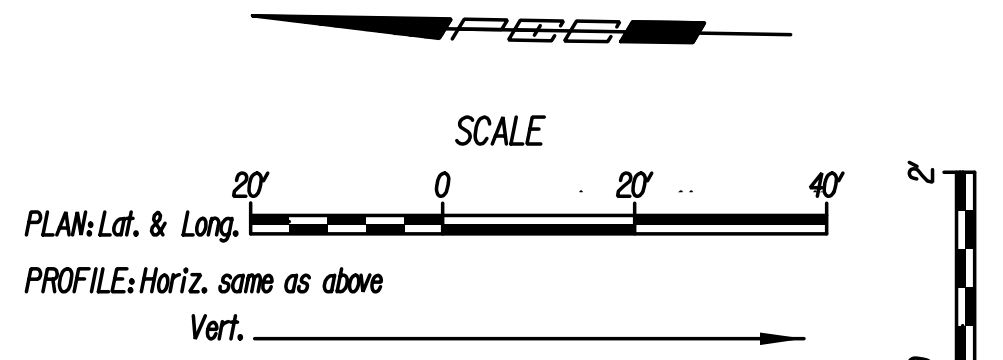
Sta. 202+68.6 SWS Line No. 200-  
Sta. 134+50, 25' Rt. & Oliver Ave.  
Construct Std. Type I Curb Inlet  
L=10'-0" W=3'-0" H=3'-9"  
Install 18" x 45.0' SWS (RCP)KS  
See Sh. No. 31, 33, 37

Sta. 203+13.6 SWS Line No. 200-  
Sta. 134+05, 25' Rt. & Oliver Ave.  
Construct Std. Type I Curb Inlet  
L=10'-0" W=3'-0" H=3'-6"  
See Sh. No. 31, 33, 37

Sta. 200+33.1 SWS Line No. 200-  
Sta. 5+00.0 SWS Line No. 201-  
Sta. 136+00, 60.50' Lt. & Oliver Ave.  
Construct Std. Type I Curb Inlet  
L=10'-0" W=4'-0" H=6'-0"  
Install 30" x 109.5' SWS (RCP)KS  
Install 30" x 19' x 85.5' SWS (RCP)HE(X)  
Install 36" x 33.1' SWS (RCP)SW  
Connect to RCP (By Others)  
with Concrete Collar (200)  
See Sh. No. 31, 33, 37

Sta. 6+09.5 SWS Line No. 201-  
Sta. 134+90.50, 58.02' Lt. & Oliver Ave.  
Construct Std. Type I Curb Inlet  
L=10'-0" W=3'-0" H=5'-6"  
Install 15" x 86.1' SWS (RCP)KS  
See Sh. No. 31, 33, 37

Sta. 6+95.6 SWS Line No. 201-  
Sta. 134+05, 48' Lt. & Oliver Ave.  
Construct Std. Type I Curb Inlet  
L=10'-0" W=3'-0" H=4'-0"  
See Sh. No. 31, 33, 37



17TH STREET AND OLIVER INTERSECTION  
STORM SEWER PLAN  
LINE NO. 200, 201, 202  
C.O.W. PROJ. NO. 472-85214

DESIGNED BY: CKC  
DRAWN BY: CP, SWB  
Job No. 15081  
Date Dec., 2017  
PROFESSIONAL ENGINEERING CONSULTANTS, P.A.  
303 SOUTH DOCKA, WICHITA, KS 67202  
316-882-2891 www.pec1.com  
PEC  
Sheet 18 of 107

Plotted By: sheldon.binn@ate: 12/14/2017 5:29:48 PM  
FILE: U:\Wichita-Civil\2015\15081\000\Trans\Road\DCN Project\SWS\15081-SWS System 200.dgn