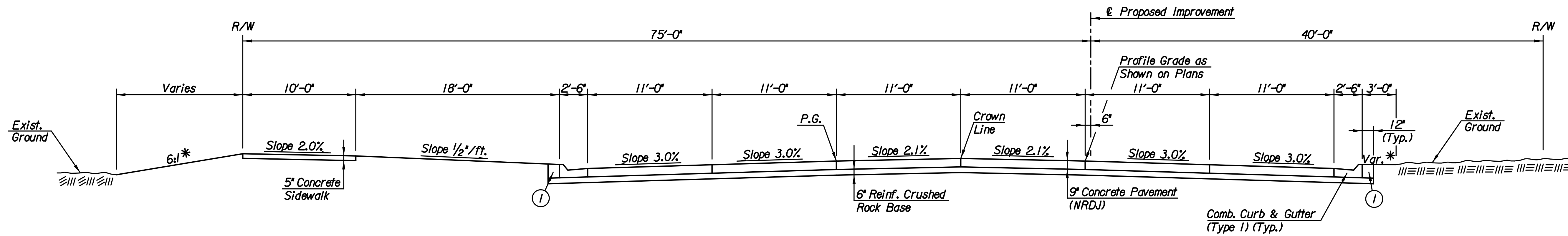
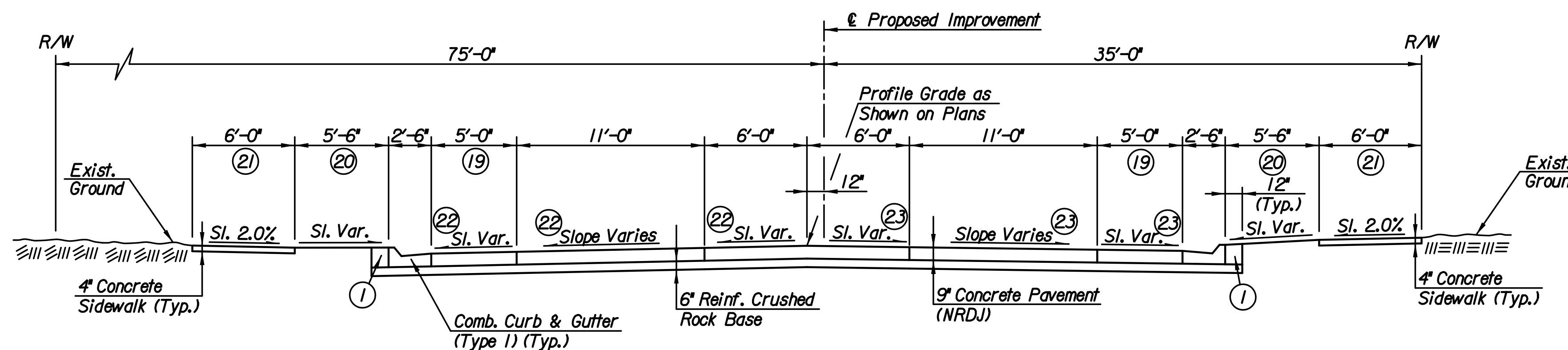


Plotted By: sheldons.bfn@date: 12/18/2017 9:12:19 AM  
 FILE: U:\Wichita-Civil\2015\15081\000\Tran\Road\DCN Project\Typical\15081-Typical\_3.dgn



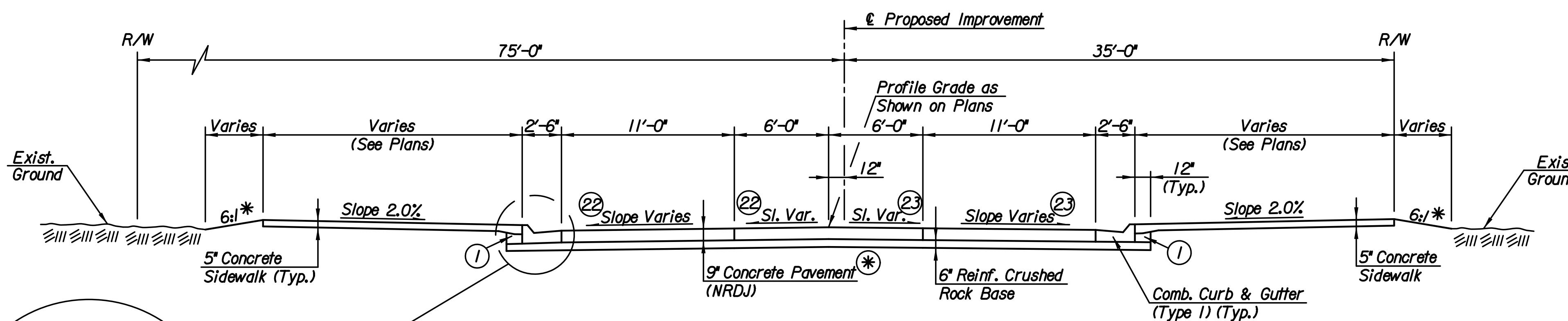
**TYPICAL SECTION**

Oliver Ave.  
Sta. 139+99.49 to Sta. 144+30.27



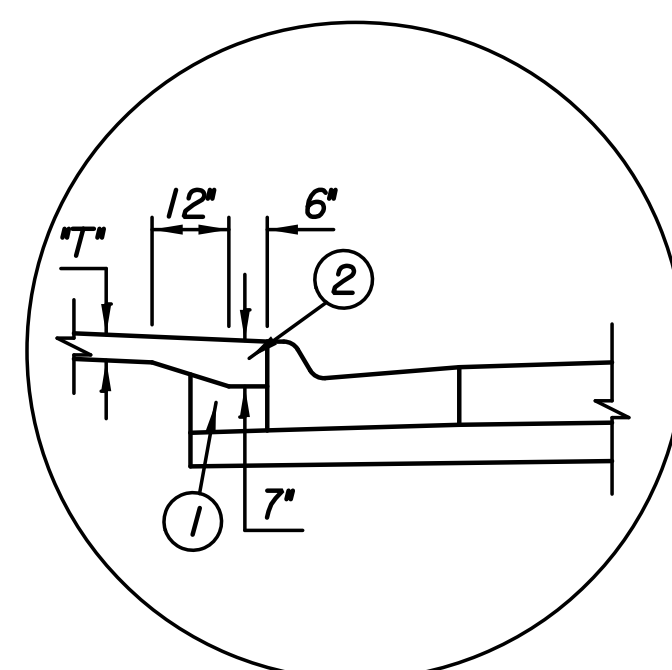
**TYPICAL SECTION**

17th St.  
Sta. 224+76.50 to Sta. 225+30



**TYPICAL SECTION**

17th St.  
Sta. 225+30 to Sta. 226+26



**TYP. THICKENED SIDEWALK EDGE DETAIL**

(Required when Sidewalk abuts Curb.)

\* See Cross Sections for Variations.

(\*) 9" Concrete Pavement (Reinf.) from Sta. 225+84.47 to Sta. 226+26.

(1) Backfill behind curb. Quantities for this work are included in the Earthwork Summary Table.

(2) The additional thickness of concrete sidewalk will be paid for as "Concrete Sidewalk, Thickened Edge".

(19) Varies from 5'-0" at Sta. 224+95 to 0'-0" at Sta. 225+30.

(20) Varies from 5'-6" at Sta. 224+95.18 to 6'-0" at Sta. 224+99.10.

(21) Varies from 6'-0" at Sta. 224+99.10 to 16'-6" at Sta. 225+30.

(22) Cross Slope Varies from -2.07% at Sta. 224+76.50 to -0.55% at Sta. 226+14.

(23) Cross Slope Varies from -1.37% at Sta. 224+76.50 to -0.62% at Sta. 226+26.

No.	Revision	By	Date
17TH STREET AND OLIVER INTERSECTION			
<b>TYPICAL SECTIONS</b>			
<b>OLIVER AVE. &amp; 17TH ST.</b>			
GARY JANZEN, P.E.-CITY ENGINEER CITY OF WICHITA PROJECT NO. 472-85214			
<b>PEC</b> PROFESSIONAL ENGINEERING CONSULTANTS, P.A. 303 SOUTH TOPEKA WICHITA, KS 67202 316-262-2691 www.pec1.com			
Designed by	CKC	Job No.	15081
Drawn by	CP, SVB	Date	Dec., 2017
			Sht. 4 of 107