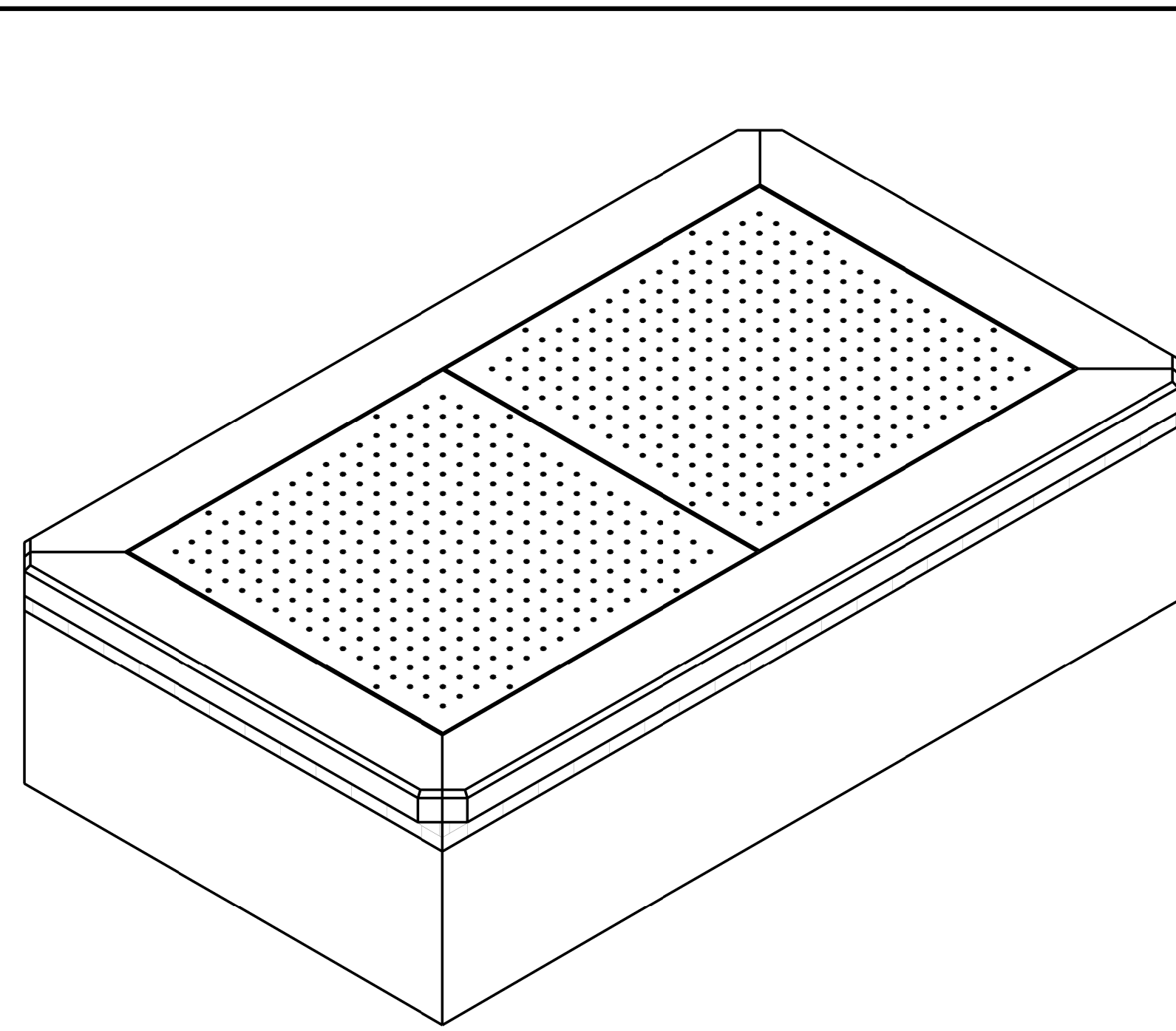
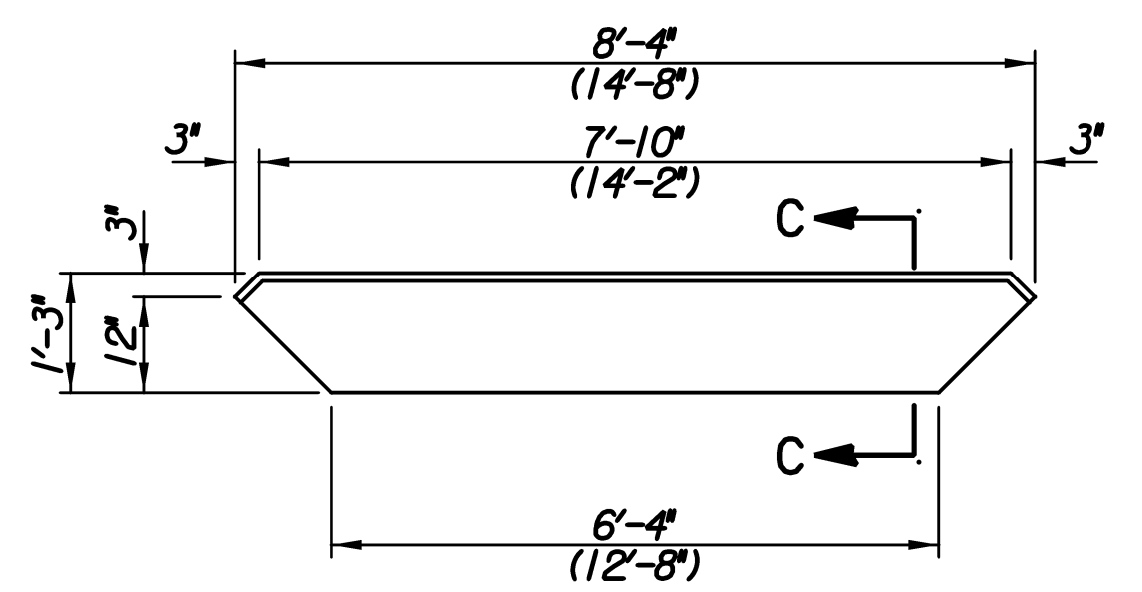


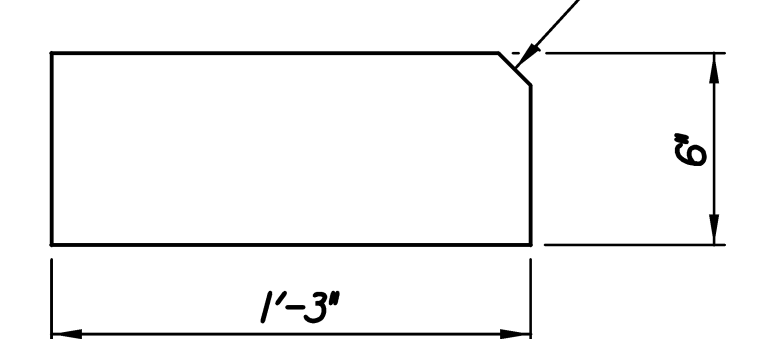
Plotted By: owp Date: 11/29/2017 4:38:08 PM
 FILE: U:\Wichita-Civil\2015\15081\000\Tran\Bridges\DCN Project\15081-Double Art Base-40.dgn



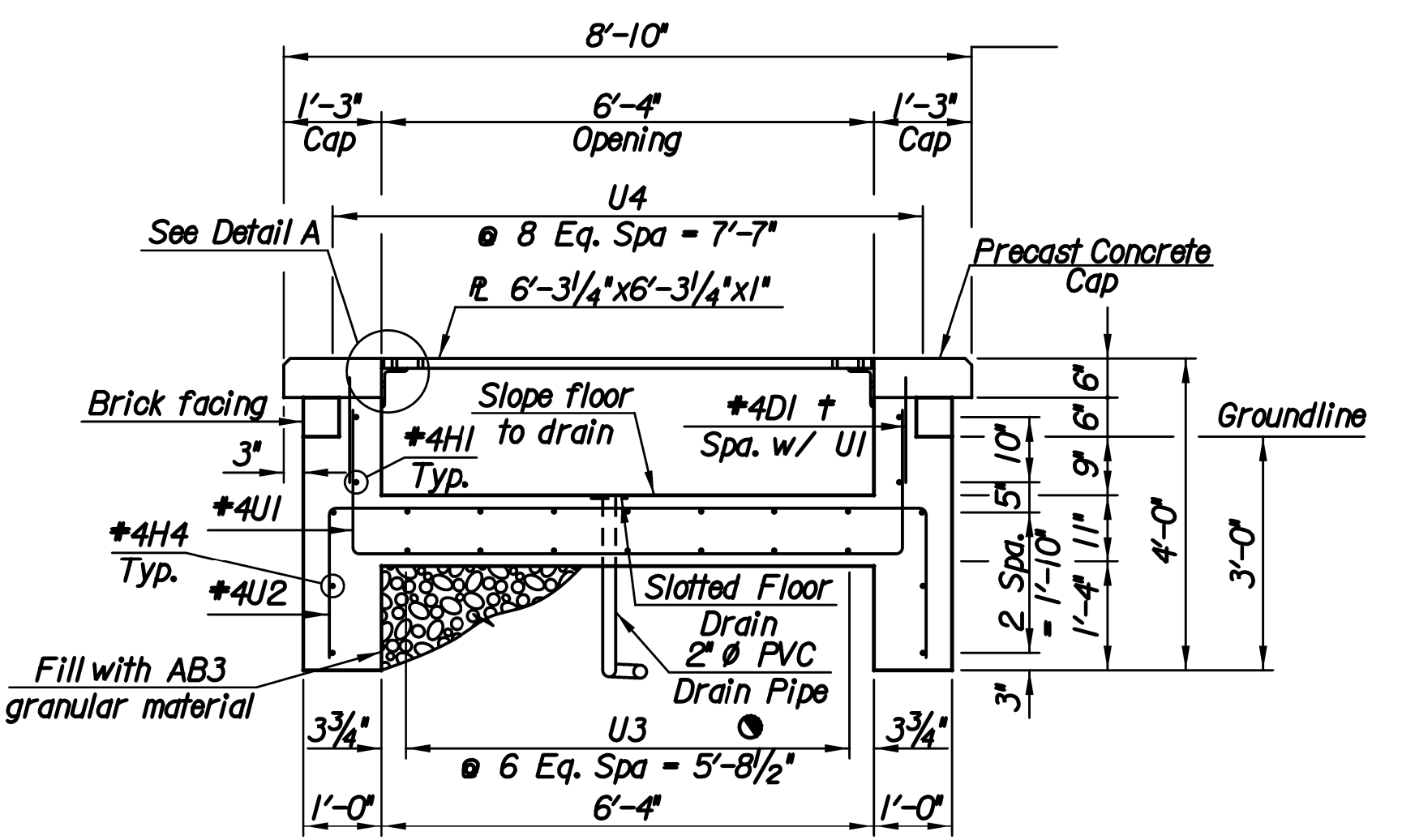
DOUBLE ART BASE
Isometric



PRECAST CONCRETE CAP
Short Face (Long Face)
2 Each Required
1" Chamfer

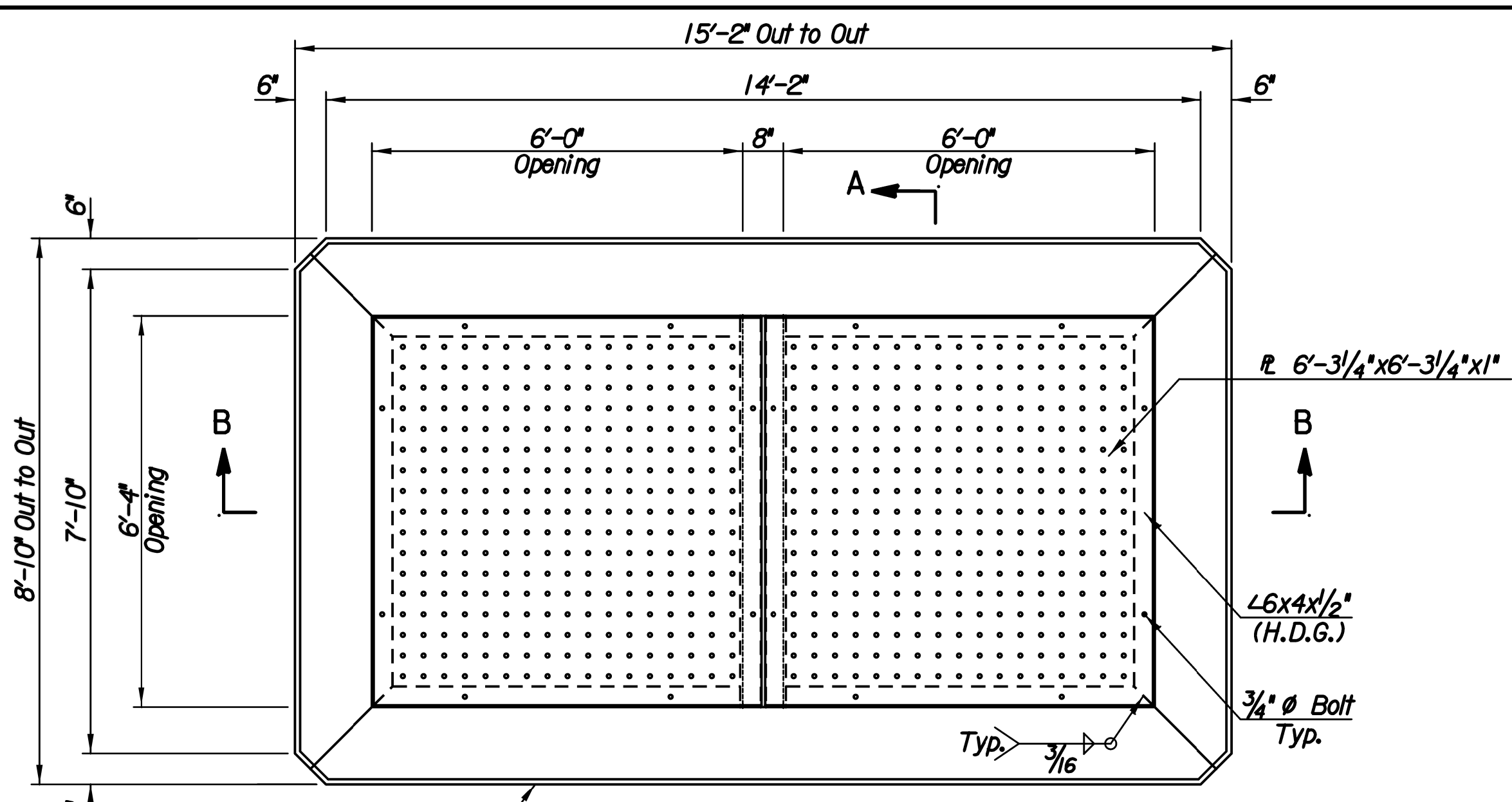


SECTION C-C

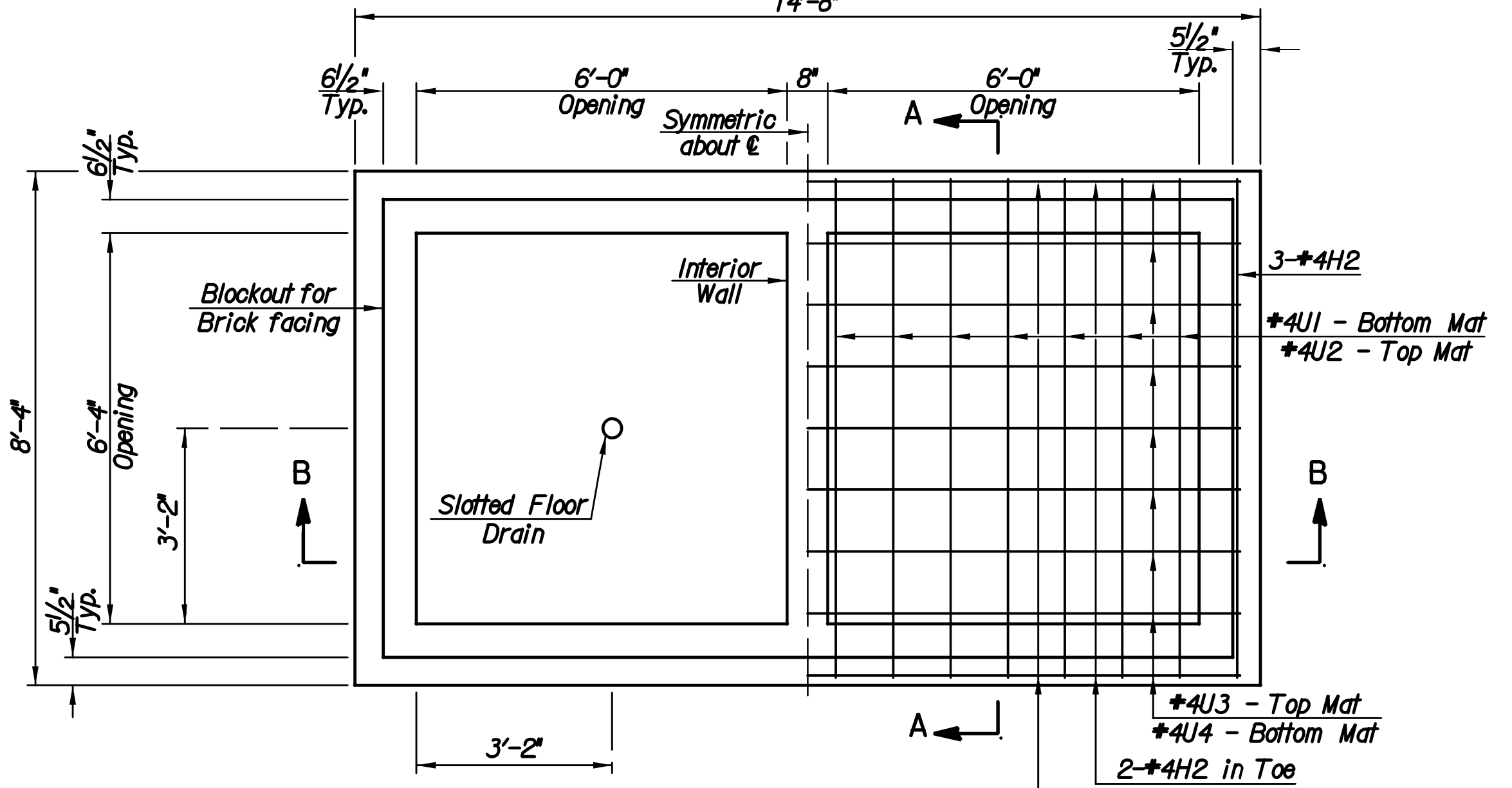


SECTION A-A

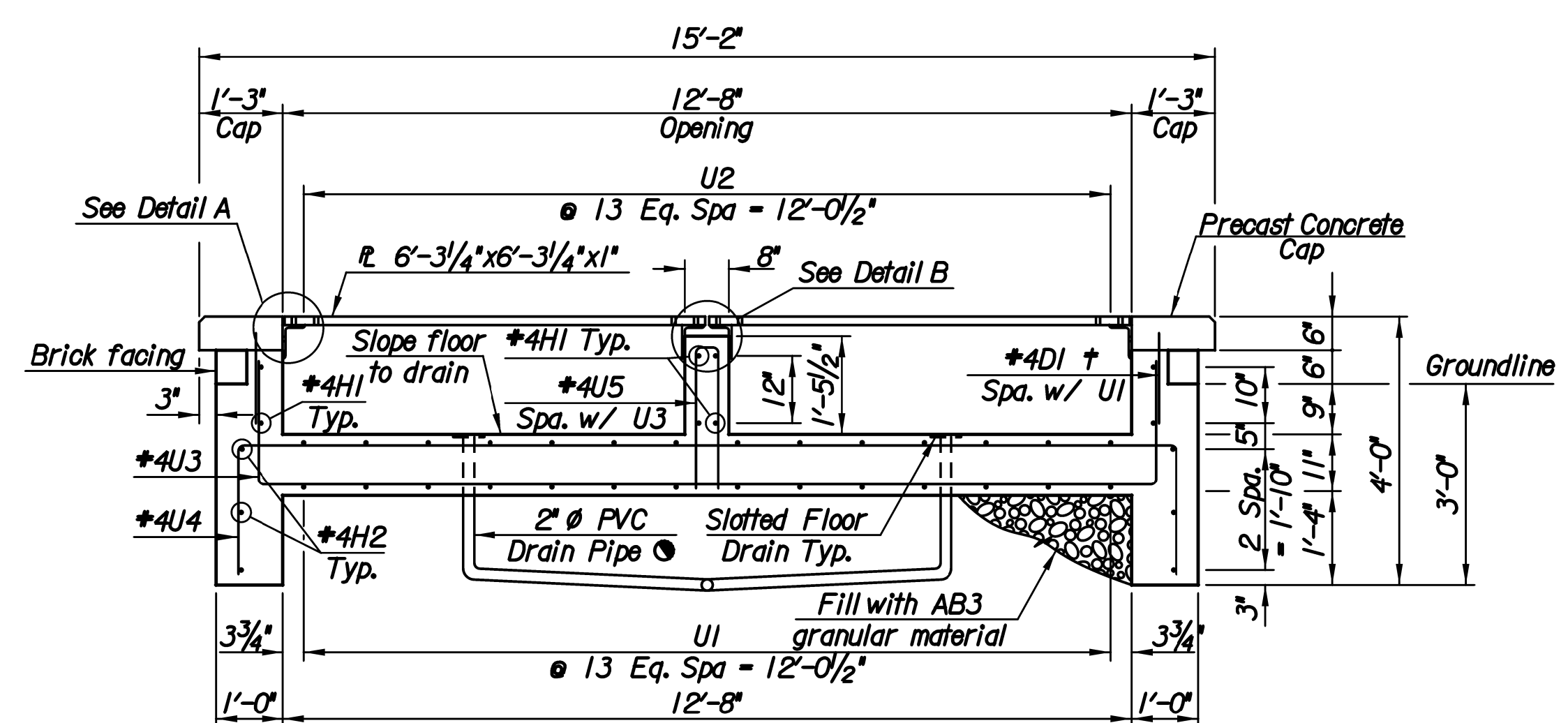
†: Drill & Grout into concrete cap & embed
 ☉ Connect to SS Node ***



PLAN A
Double Opening Cap and Steel Plate
14'-8"

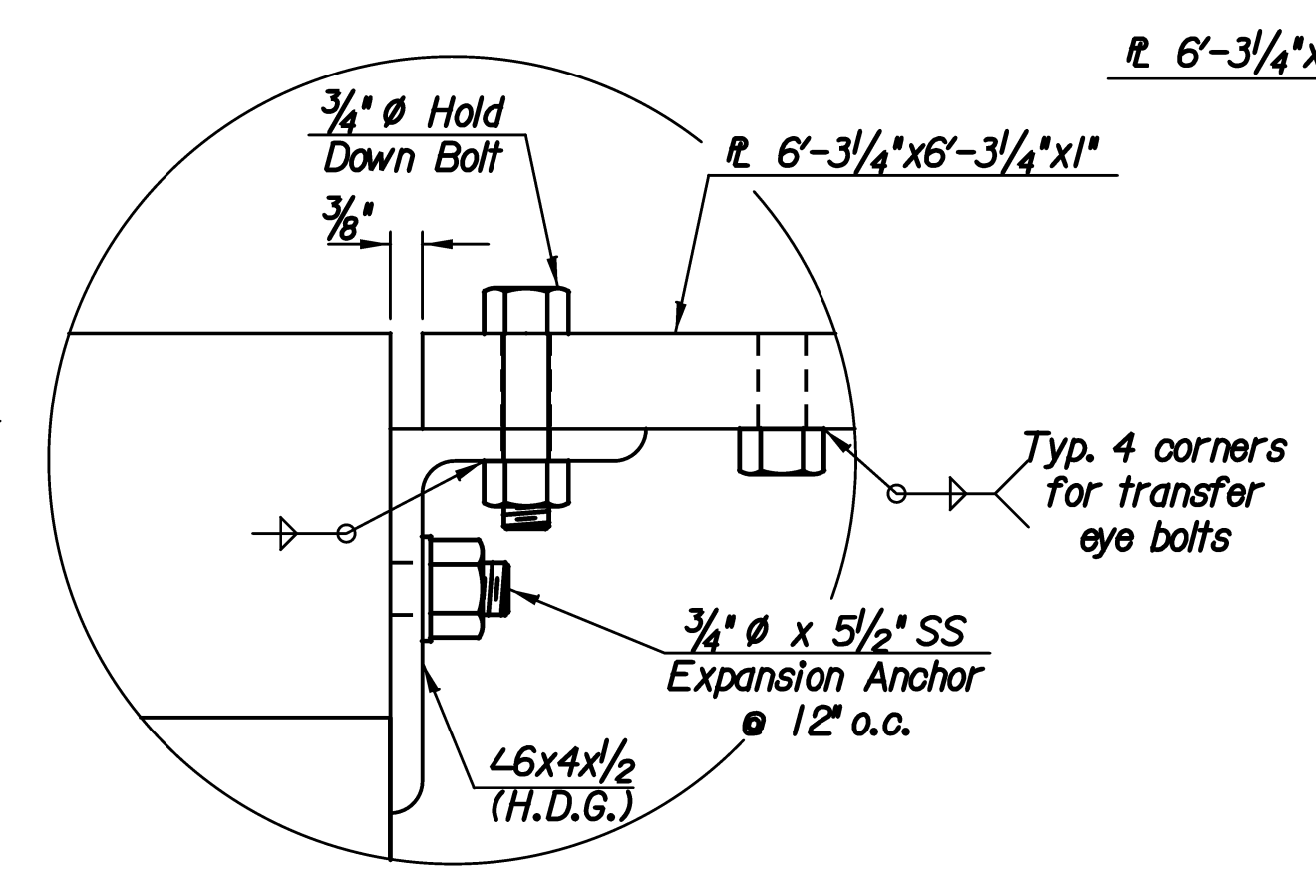


HALF PLAN **REINFORCING IN SLAB**

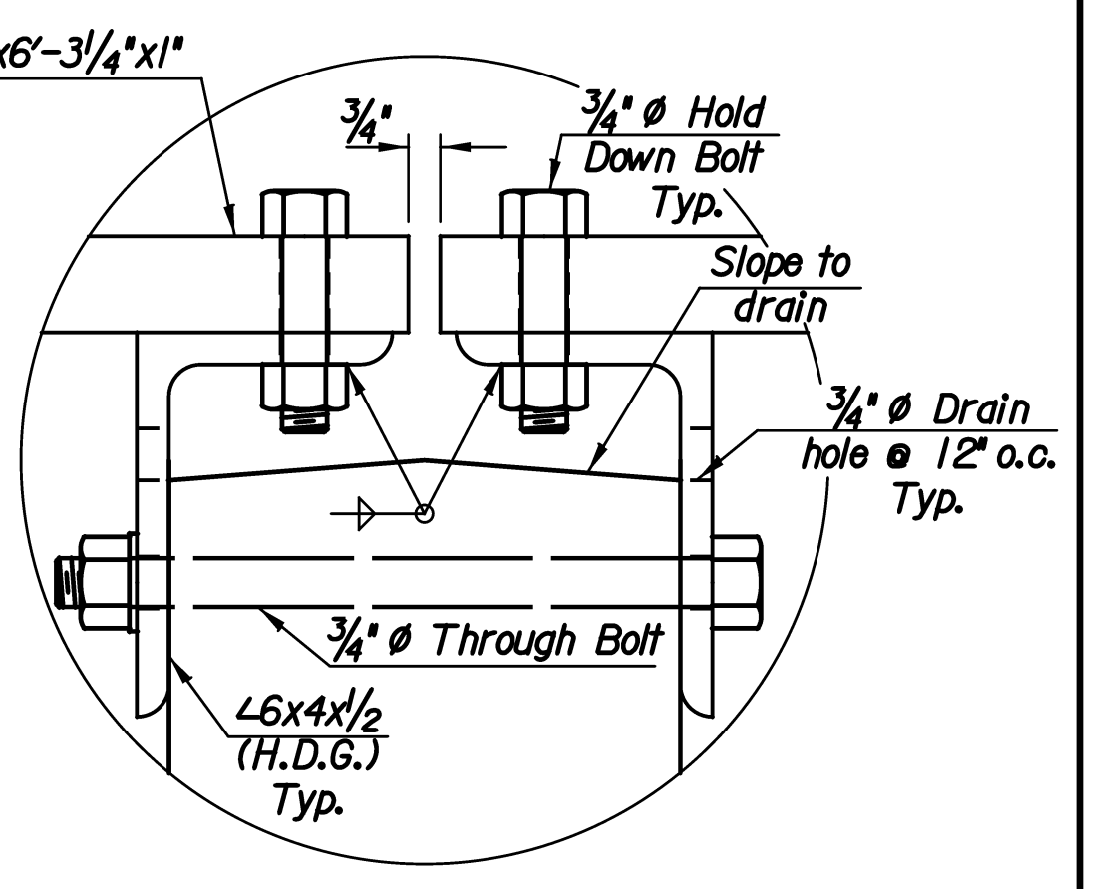


SECTION B-B

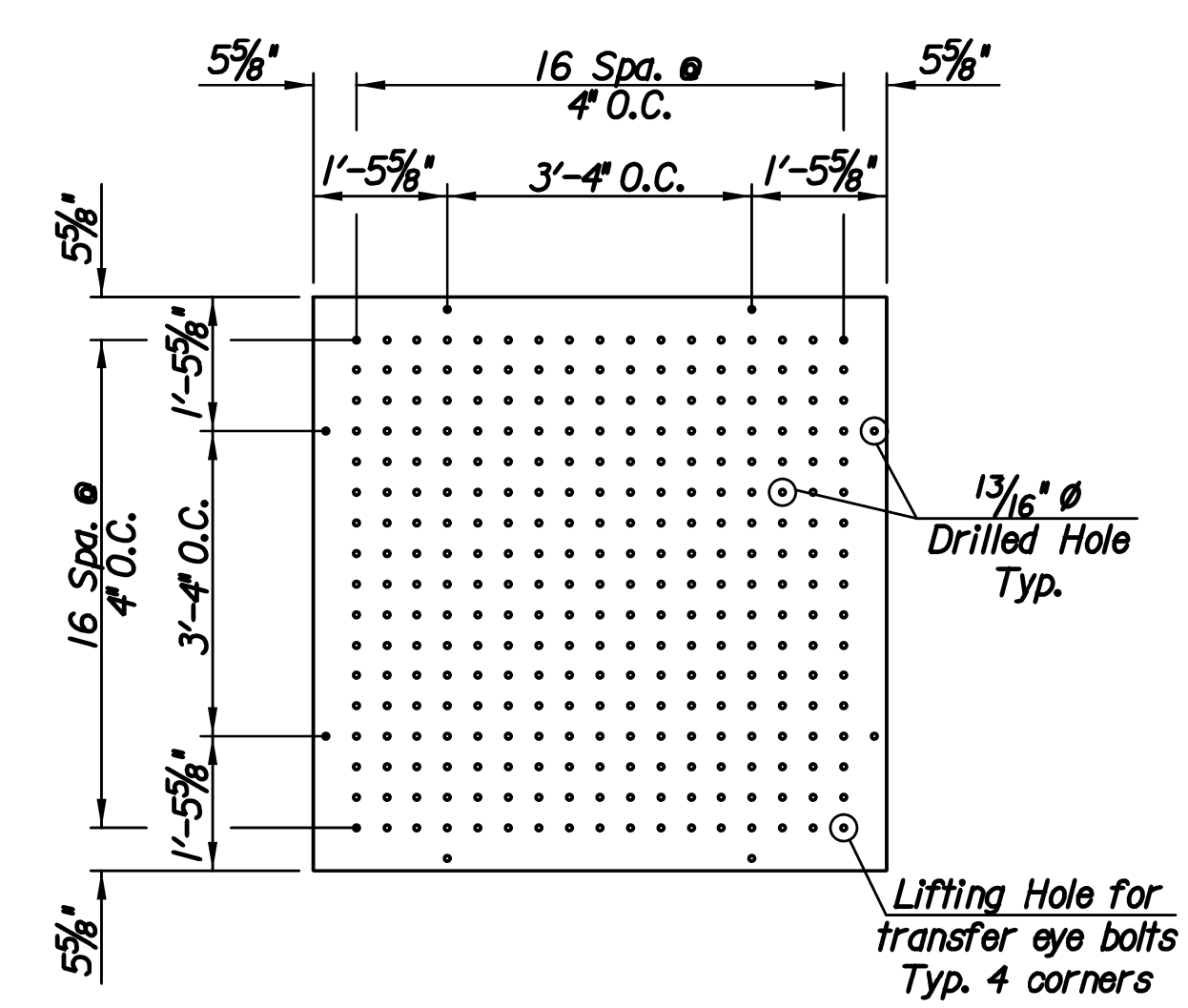
†: Drill & Grout into concrete cap & embed
 ☉ Connect to SS Node ***



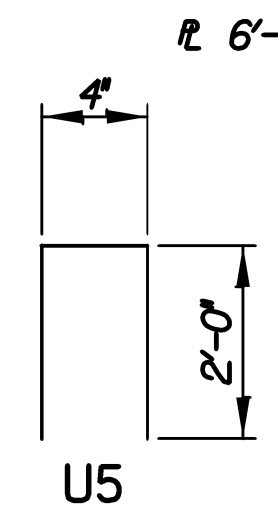
DETAIL A



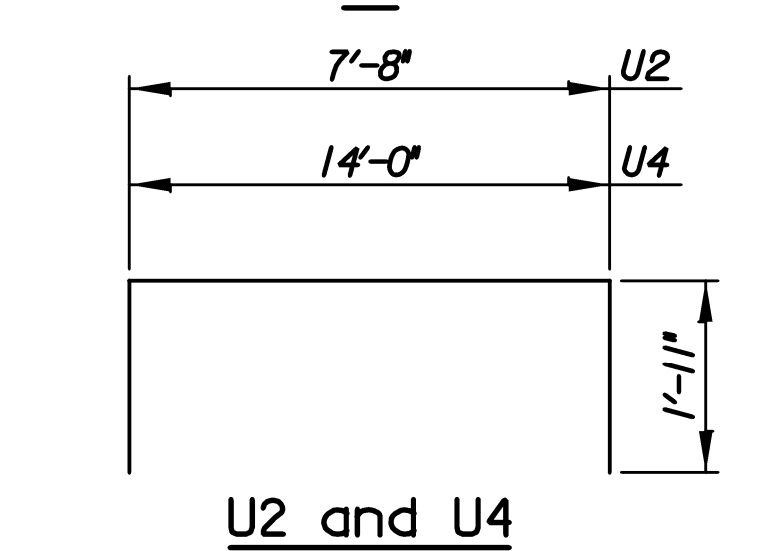
DETAIL B



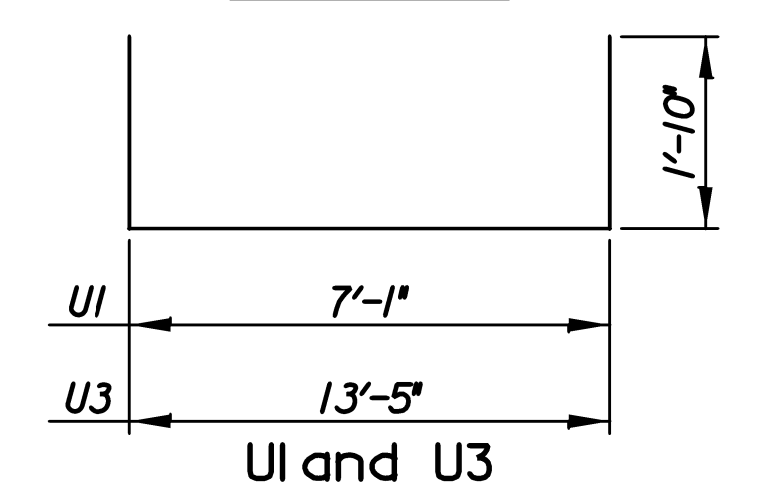
STEEL PLATE DETAIL
6'-3/4" x 6'-3/4" x 1"



U5



U2 and U4



U1 and U3

BENDING DIAGRAMS

All Reinforcing shall have 2" clearance unless otherwise noted.

GENERAL NOTES

- Provide concrete meeting City of Wichita specifications with a minimum $f'c=4$ ksi at 28 days.
- Reinforcing steel shall meet the requirements of ASTM 615 with $f_y=60$ ksi.
- Provide structural steel for plates and rolled shapes meeting City of Wichita specifications with a minimum $f_y=50$ ksi. Plate, rolled sections, and other visible hardware to be powdercoat black. Powdercoat specifications shall be approved by Landscape Architect.
- All steel fasteners shall comply with ASTM A 307 and fasteners shall comply with ASTM A 563.
- Slotted floor drain to be Neenah Foundry R-4380 Series or approved equal.
- Stainless steel expansion anchors shall be Hilti KWIK Bolt 3 SS 304 or approved equal.
- Top of the art base shall be set level.

BILL OF MATERIALS - DOUBLE *

| Item | Quantity | Unit |
|------------------------------|----------|------|
| Concrete | 8.1 | C.Y. |
| Reinforcing Steel (Grade 60) | 597 | Lbs. |
| Structural Steel | 4,012 | Lbs. |

* For information only

REINFORCING STEEL - DOUBLE

| Straight Bars | | | | Bent Bars | | | |
|---------------|------|-----|--------|-----------|------|-----|---------|
| Mark | Size | No. | Length | Mark | Size | No. | Length |
| H1 | #4 | 8 | 7'-1" | U1 | #4 | 14 | 10'-9" |
| H2 | #4 | 6 | 8'-0" | U2 | #4 | 14 | 11'-6" |
| H3 | #4 | 4 | 13'-5" | U3 | #4 | 7 | 17'-1" |
| H4 | #4 | 4 | 14'-4" | U4 | #4 | 9 | 17'-10" |
| D1 | #4 | 42 | 1'-4" | U5 | #4 | 7 | 4'-4" |

17TH STREET AND OLIVER INTERSECTION

ART FOUNDATION, DOUBLE

GARY JANZEN, P.E.-CITY ENGINEER
 CITY OF WICHITA PROJECT NO. 472-85214

PEC PROFESSIONAL ENGINEERING CONSULTANTS, P.A.
 303 SOUTH TOPEKA WICHITA, KS 67202
 316-262-2691 www.pec1.com

Designed by CWPJ Job No. 15081
 Drawn by MLB Date Oct., 2017 Sht. 40 of 107