

UTILITIES

AT&T
Wichita Central Unit
154 N. Broadway, Rm. 210
Wichita, KS 67202
Jason Edwards (316) 268-2008

Cox Communications
901 George Washington Blvd.
Wichita, KS 67211
James Walburn (316) 260-7491

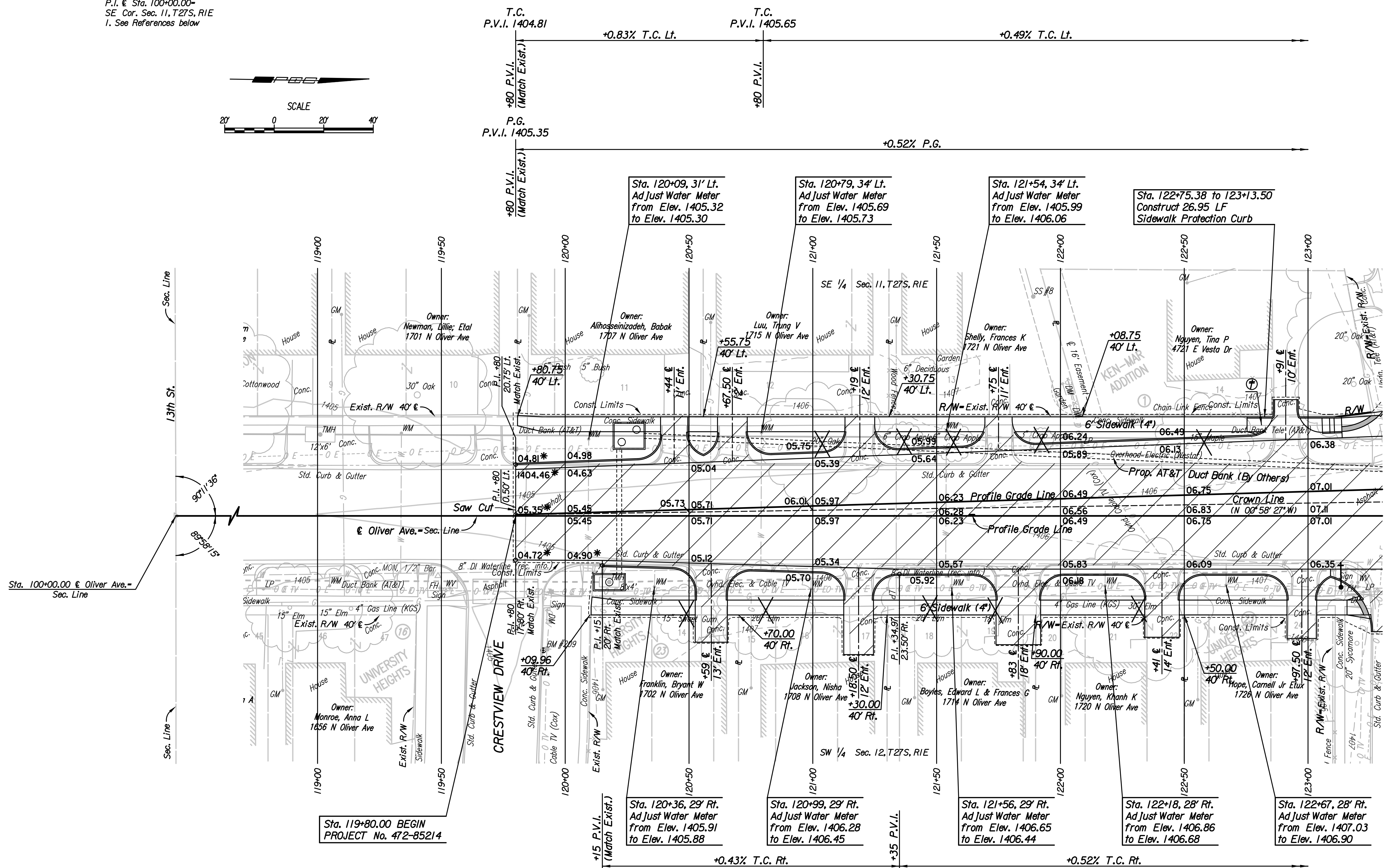
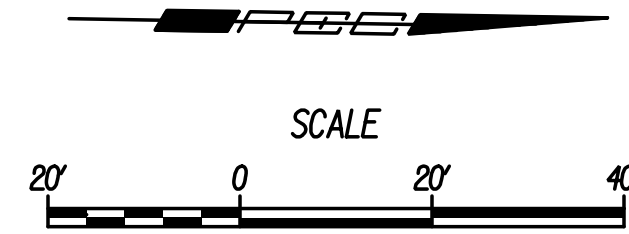
Kansas Gas Service
1021 E. 26th St. N.
Wichita, KS 67219
Jim Coe (316) 832-3126

Westar Energy
1900 E. Central (3rd Floor)
P.O. Box 208
Wichita, KS 67201
Zach Laws (316) 261-6264

Westar Transmission Engineering
818 S. Kansas Avenue
P.O. Box 889
Topeka, KS 66601
Greg Roy (785) 575-8167

Wichita Water Utilities
455 N. Main (8th Floor - City Hall)
Wichita, KS 67202
LaDonna Lawrenz (316) 268-4329 (San. Sewer)
Greg Lolley (316) 268-4334 (Water)

P.I. & Sta. 100+00.00-
SE Cor. Sec. 11, T27S, R1E
I. See References below



Note: Elevations shown along Curb and Gutter are to High Edge and Top of Curb.

- SE Cor. Sec. 11, T27S, R1E
- 1. RR Spike 5" Deep Removed
- 2. N 1,693,940.151 E 1,665,075.038
- 3. At & 13th St.
- 4. At & Oliver Ave.
- 5. Chiseled ** on traffic signal manhole. 63.03' NE
- 6. PK Nail in asphalt NW of traffic signal pole. 47.05' SE
- 7. Chiseled ** on traffic signal manhole. 63.06' SW
- 8. Chiseled ** on top of curb mid-point of curve. 55.44' NW

BM #209 - Chiseled square on north curb of Crestview St. \ 50' west of & of Oliver Ave.
54.31' Rt. & Sta. 119+91.14 NAVD88 Elev. = 1405.41

LEGEND

- Pavement Removal
- Match Existing
- Wheelchair Ramp without Detectable Warning
- Denotes trees to be removed

- Utilities**
- Cable TV
 - Gas
 - Power
 - Sanitary Sewer
 - Telephone
 - Water
 - Cox Communications
 - Kansas Gas Service
 - Westar Energy
 - Wichita Water Utilities
 - AT&T, Wichita Central Unit
 - Wichita Water Utilities

Plotted By: sheldon.bfn@date: 12/14/2017 3:46:18 PM
 FILE: U:\Wichita-Civil\2015\15081\Drawings\Road\DCN Project\Plan\15081-Plan_119.dgn

17TH STREET AND OLIVER INTERSECTION	
PLAN	
STA. 119+00 TO STA. 123+00	
GARY JANZEN, P.E. - CITY ENGINEER CITY OF WICHITA PROJECT NO. 472-85214	
PROFESSIONAL ENGINEERING CONSULTANTS, P.A. 303 SOUTH TOPEKA WICHITA, KS 67202 316-262-2691 www.pec1.com	
Designed by CKC	Job No. 15081
Drawn by CP, SVB	Date Dec., 2017
Sht. 6 of 107	