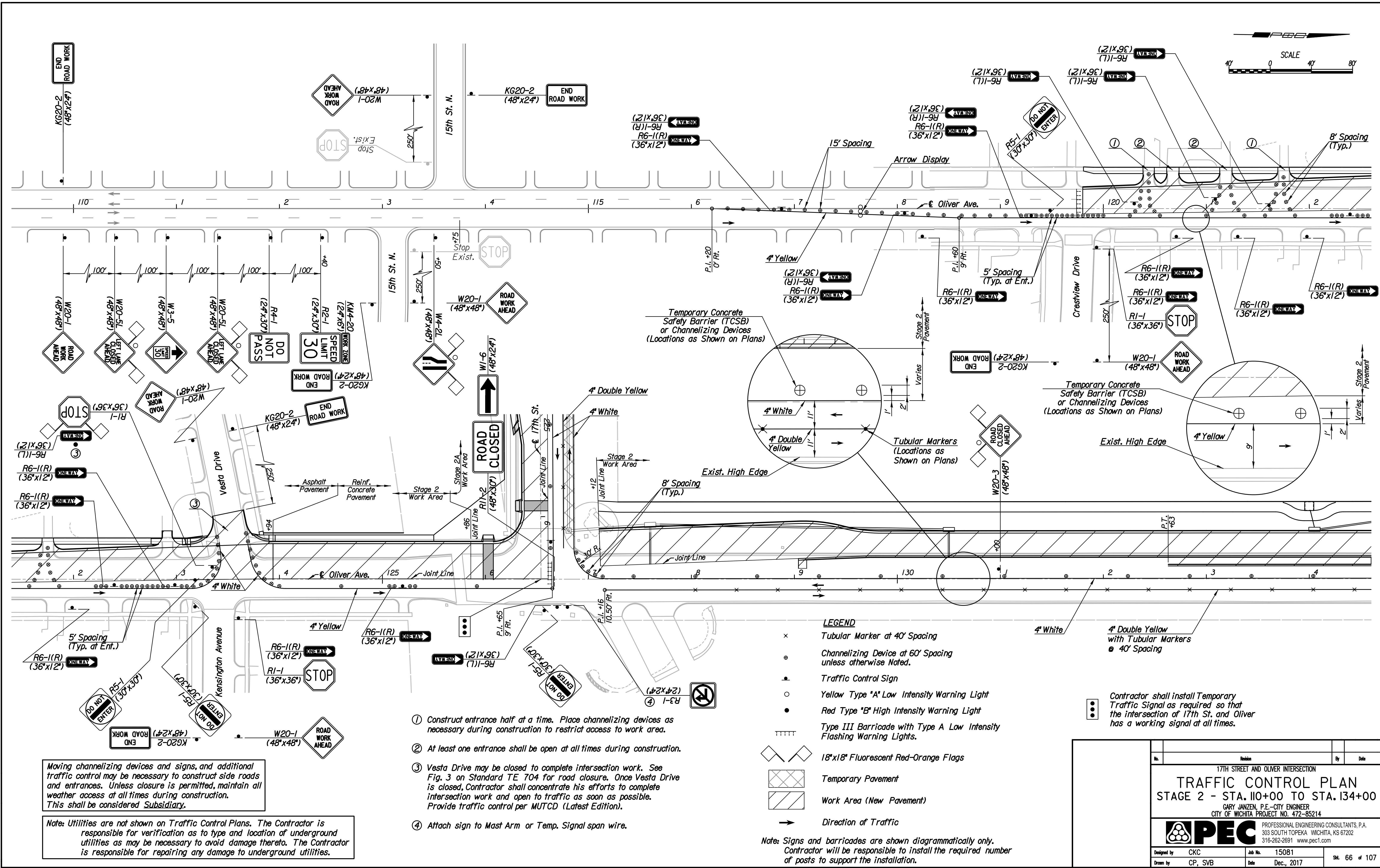


Plotted By: sheldon.bln@date: 12/15/2017 10:16:29 AM
 FILE: U:\Wichita-Civil\2015\15081\Trans\Road\DN Project\Traffic Control\15081-TC Stage 2 Plan_10.dgn



Moving channelizing devices and signs, and additional traffic control may be necessary to construct side roads and entrances. Unless closure is permitted, maintain all weather access at all times during construction. This shall be considered Subsidiary.

Note: Utilities are not shown on Traffic Control Plans. The Contractor is responsible for verification as to type and location of underground utilities as may be necessary to avoid damage thereto. The Contractor is responsible for repairing any damage to underground utilities.

- ① Construct entrance half at a time. Place channelizing devices as necessary during construction to restrict access to work area.
- ② At least one entrance shall be open at all times during construction.
- ③ Vesta Drive may be closed to complete intersection work. See Fig. 3 on Standard TE 704 for road closure. Once Vesta Drive is closed, Contractor shall concentrate his efforts to complete intersection work and open to traffic as soon as possible. Provide traffic control per MUTCD (Latest Edition).
- ④ Attach sign to Mast Arm or Temp. Signal span wire.

LEGEND

- × Tubular Marker at 40' Spacing
- Channelizing Device at 60' Spacing unless otherwise noted.
- Traffic Control Sign
- Yellow Type "A" Low Intensity Warning Light
- Red Type "B" High Intensity Warning Light
- ▬ Type III Barricade with Type A Low Intensity Flashing Warning Lights.
- ▭ 18"x18" Fluorescent Red-Orange Flags
- ▨ Temporary Pavement
- ▩ Work Area (New Pavement)
- Direction of Traffic

Note: Signs and barricades are shown diagrammatically only. Contractor will be responsible to install the required number of posts to support the installation.

Contractor shall install Temporary Traffic Signal as required so that the intersection of 17th St. and Oliver has a working signal at all times.

Revision		By	Date
17TH STREET AND OLIVER INTERSECTION			
TRAFFIC CONTROL PLAN			
STAGE 2 - STA. 110+00 TO STA. 134+00			
GARY JANZEN, P.E.-CITY ENGINEER CITY OF WICHITA PROJECT NO. 472-85214			
PEC PROFESSIONAL ENGINEERING CONSULTANTS, P.A. 303 SOUTH TOPEKA WICHITA, KS 67202 316-262-2691 www.pec1.com			
Designed by	CKC	Job No.	15081
Drawn by	CP, SVB	Date	Dec., 2017
			Sht. 66 of 107