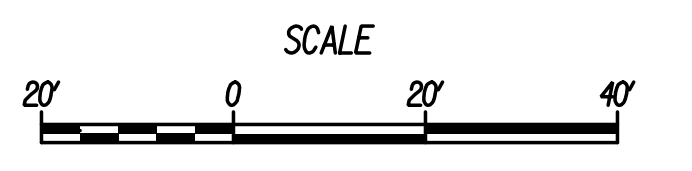
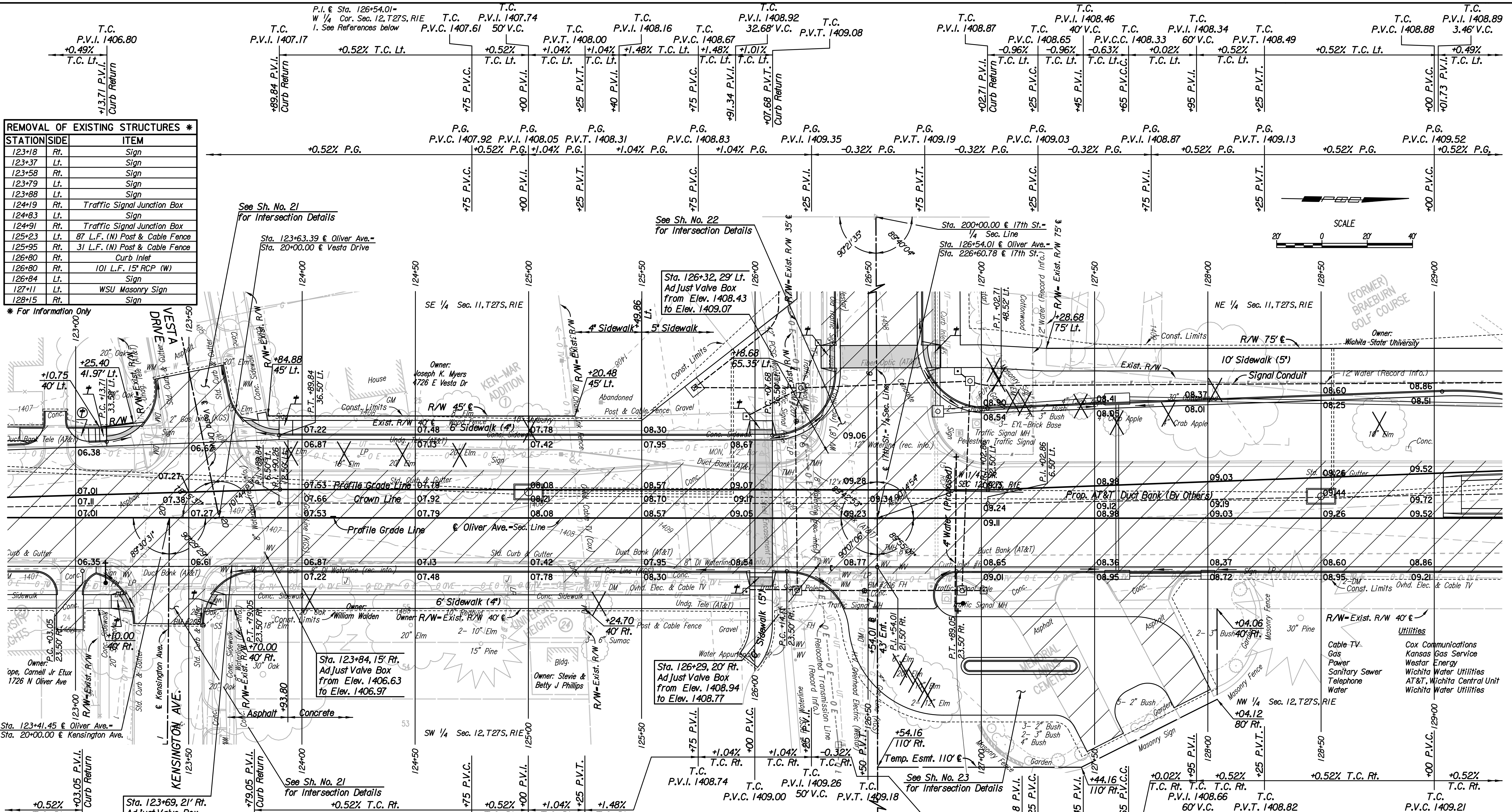


REMOVAL OF EXISTING STRUCTURES *

STATION	SIDE	ITEM
123+18	Rt.	Sign
123+37	Lt.	Sign
123+58	Rt.	Sign
123+79	Lt.	Sign
123+88	Lt.	Sign
124+19	Rt.	Traffic Signal Junction Box
124+83	Lt.	Sign
124+91	Rt.	Traffic Signal Junction Box
125+23	Lt.	87 L.F. (N) Post & Cable Fence
125+95	Rt.	31 L.F. (N) Post & Cable Fence
126+80	Rt.	Curb Inlet
126+80	Rt.	101 L.F. 15" RCP (W)
126+84	Lt.	Sign
127+11	Lt.	WSU Masonry Sign
128+15	Rt.	Sign

* For Information Only



Plotted By: sheldon.bfn@date: 12/14/2017 3:51:48 PM
 FILE: J:\Wichita-Civil\2015\1508\Trans\Road\BGN Proj\1508\Plan\1508-Plan_123.dgn

- LEGEND**
- Pavement Removal
 - Wheelchair Ramp w/ Detectable Warning
 - Wheelchair Ramp without Detectable Warning
 - Denotes trees to be removed

- Center Cor. Sec. 11, T27S, R1E
 1. Found 3/4" iron pipe in thimble half-way between Bluff St. and Gentry St. and in E of 17th St.
 2. N 1,696,536.690 E 1,662,370.990
 3. PK nail in west face of power pole
 4. PK nail in north face of power pole
 5. Center of city of Wichita brass disk bench mark
 6. PK nail 0.1' inside west face of 15" dia. osage tree, southwest 1 of 3 trees.
 7. Chiseled cross on top of north curb of 17th street at 40' cottonwood tree
- 38.70' SSE
 58.87' SW
 49.01' NE
 40.54' NNE
 73.54' ENE
- BM *208 - Chiseled square on north curb of Kensington Street south of manhole at the northeast corner of Kensington Street and Oliver Ave.
 47.47' Rt. E Sta. 123+56.31 NAVD88 Elev. = 1406.62

- W 1/4 Cor. Sec. 12, T27S, R1E
 1. Found 1/2" iron pipe in thimble at intersection of E of 17th St. N. and Oliver Ave.
 2. N 1,696,593.770 E 1,665,029.920
 3. Chiseled cross on top of curb at midpoint of curve
 4. Southeast corner of concrete pad for cross walk signal light pole
 5. Southwest bolt for base of traffic signal light pole
 6. PK nail in north face of power pole
- 44.69' NW
 51.03' NW
 38.13' NE
 28.38' ESE
- BM *207 - Chiseled square with bolt and washer in center at the southeast corner of traffic signal manhole pad at the southwest corner of Oliver Ave. and 17th St.
 42.79' Lt. E Sta. 126+18.22 NAVD88 Elev. = 1409.14

- Center Cor. Sec. 12, T27S, R1E
 1. Found 1" iron pipe 0.2' deep
 2. N 1,696,645.266 E 1,667,687.563
 3. Mag nail east face of fence post
 4. Mag nail in east face of 4" hedge post stump
 5. Mag nail in north face of 6' elm
 6. Chainlink fence east-west
- 10.95' SW
 2.00' W
 3.87' S
 15.00' S
- BM *206 - Chiseled square on southwest corner of traffic signal box pad on east side of Oliver Ave. at 17th St. extended.
 32.03' Rt. E Sta. 126+48.41 NAVD88 Elev. = 1411.18

17TH STREET AND OLIVER INTERSECTION

PLAN
 STA. 123+00 TO STA. 129+00

GARY JANZEN, P.E.-CITY ENGINEER
 CITY OF WICHITA PROJECT NO. 472-85214

PEC PROFESSIONAL ENGINEERING CONSULTANTS, P.A.
 303 SOUTH TOPEKA WICHITA, KS 67202
 316-262-2691 www.pec1.com

Designed by	CKC	Job No.	15081
Drawn by	CP, SVB	Date	Dec., 2017

Sheet 7 of 107