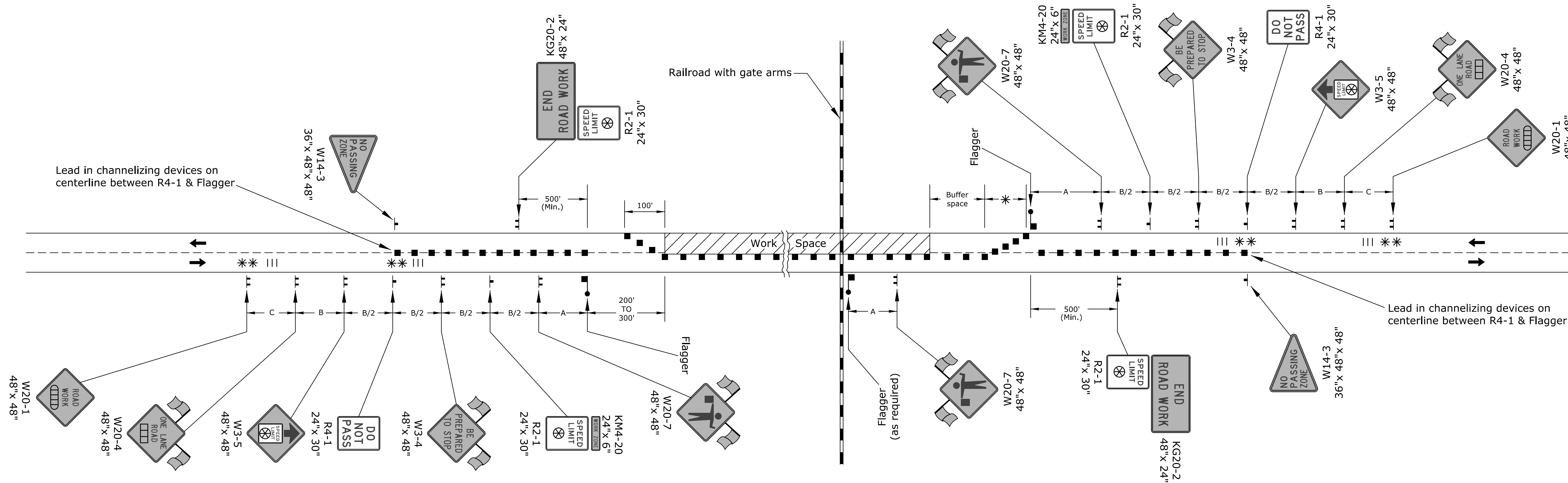
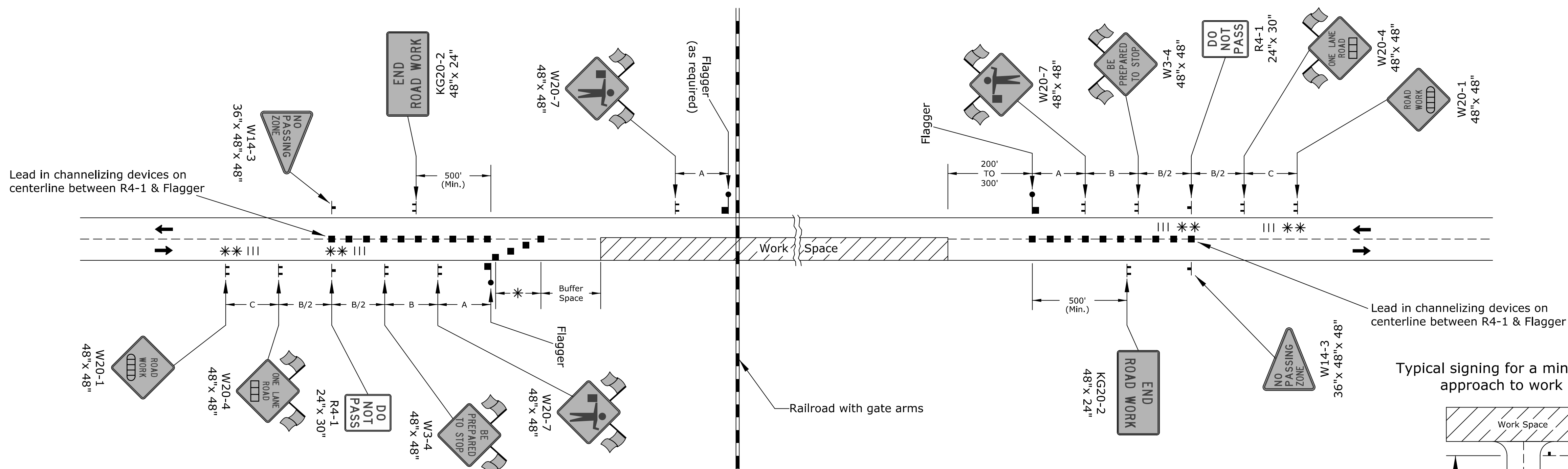


| | | | | |
|--------|-------------|------|-----------|--------------|
| STATE | PROJECT NO. | YEAR | SHEET NO. | TOTAL SHEETS |
| KANSAS | 472-85214 | 2017 | 84 | 107 |

FLAGGER



FLAGGER AND PILOT CAR



USE TE731 FOR FLAGGER OR PILOT CAR ON ROADWAYS WITH CONCRETE SHOULDERS GREATER THAN 8 FT.

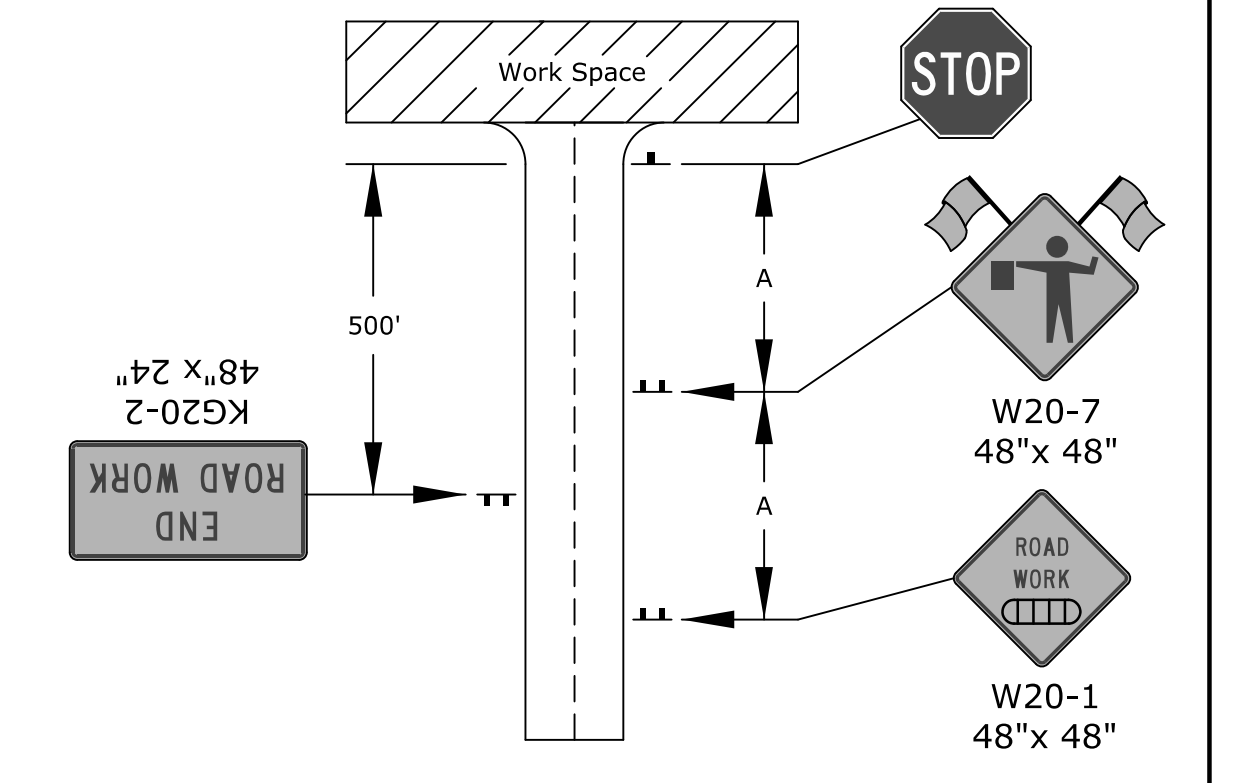
Notes:
 Trucks hauling material to the project should STOP at the Flagger. After stopping, upon approval of the Engineer, trucks may be allowed to move around the Flagger.
 Place a Flagger at all highway and major collector intersections and at-grade railroad intersections with lights and gates in the work space to control traffic crossing the tracks to the left of the gate arm. The need for a Flagger at minor side road intersections shall be determined by the Engineer. Place a W20-7 (Flagger symbol) sign on each side road that is controlled by a Flagger.
 Existing signs shall not be covered or removed between Flagger stations.
 Temporary rumble strips may be used in lieu of lead in channelizing devices when the roadway is less than or equal to 30' including paved shoulders. When extenuating circumstances exist, the Area Engineer may elect to eliminate both the lead in channelizers and the rumble strips.

* Minimum six (6) channelizers spaced at 20' intervals.
 ** Optional rumble strips may be placed: One set between the W20-1 and W20-4, and one set between the R4-1 and W3-4, on each approach.

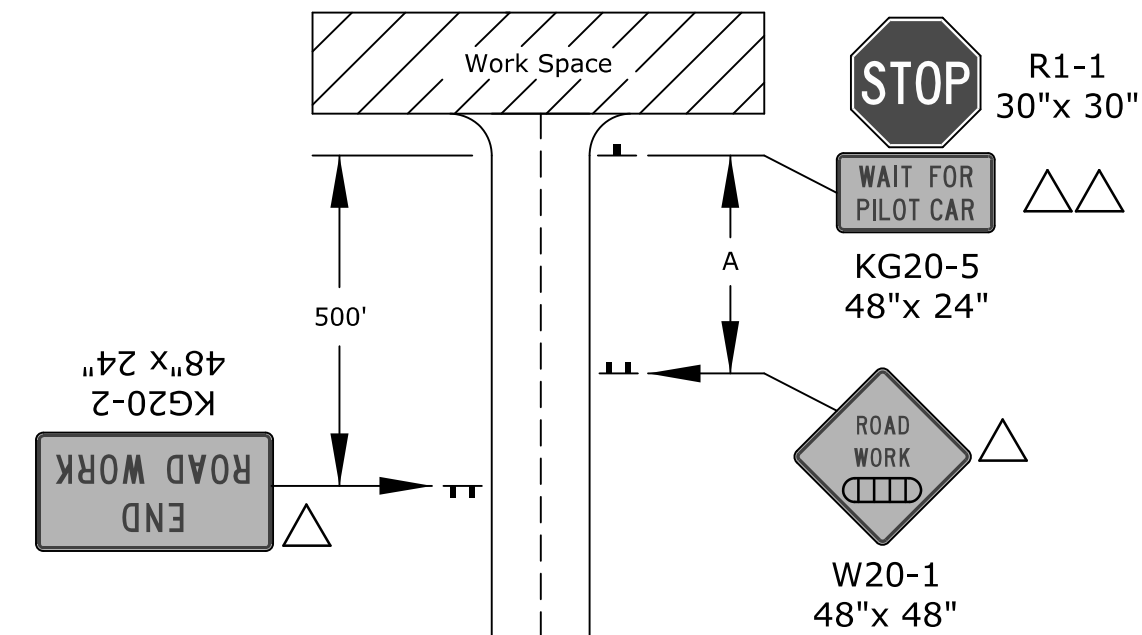
△ Not required on substantial maintenance projects (1R).
 △△ The KG20-5 (WAIT FOR PILOT CAR) sign shall be mounted on an approved portable support and not attached to the existing stop sign post.

The KG20-5 sign shall be placed immediately in front of the existing stop sign, a minimum of 6" below the bottom of the stop sign. The sign should be removed or covered when there is no pilot car.

Typical signing for highway or major collector approach to work space



Typical signing for a minor side road approach to work space



- Channelizing device
- ▤ Ahead, 1500 ft, or 1 mile
- ▥ Ahead, 1000 ft, 1500 ft, or 1/2 mile
- ⊗ Speed to be determined by the Engineer
- Type "A" low intensity warning light
- ||| Temporary portable rumble strips

| KANSAS DEPARTMENT OF TRANSPORTATION | | | | |
|--------------------------------------|------------|------------|-----------|-------|
| TRAFFIC CONTROL FLAGGER OR PILOT CAR | | | | |
| TE730 | | | | |
| NO. | DATE | REVISIONS | BY | APP'D |
| 3 | | | | |
| 2 | | | | |
| 1 | | | | |
| DESIGNED | B.A.H. | QUANTITIES | TRACED | |
| DESIGN CK. | DETAIL CK. | QUAN. CK. | TRACE CK. | |