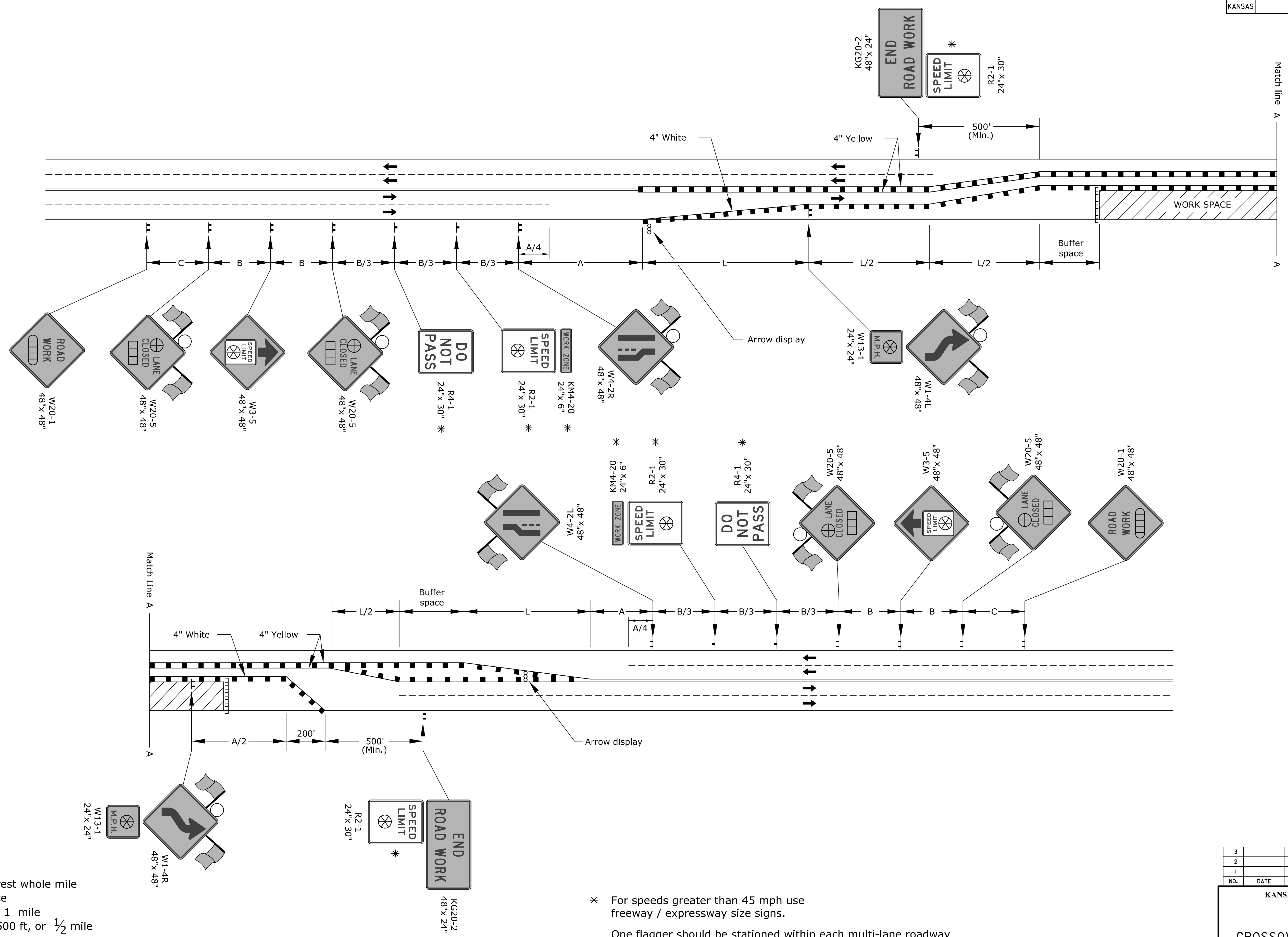


STATE	PROJECT NO.	YEAR	SHEET NO.	TOTAL SHEETS
KANSAS	472-85214	2017	85	107



- ▬ Type 3 barricades
- ⊗ Length to the nearest whole mile
- Channelizing device
- ▭ Ahead, 1500 ft, or 1 mile
- ▭ Ahead, 1000 ft, 1500 ft, or 1/2 mile
- ⊕ Right or left
- ⊗ Speed to be determined by the Engineer
- Type "A" low intensity warning light

* For speeds greater than 45 mph use freeway / expressway size signs.

One flagger should be stationed within each multi-lane roadway activity area where work is in a closed lane adjacent to traffic and not separated by a concrete safety barrier system.

Drawn By : sheldon.bina Plotted : 6/8/2017
 File : U:\Wichita-Civil\2015\15081\000\Trans\Road\DGN ProjectStandards\15081-te748.dgn

KANSAS DEPARTMENT OF TRANSPORTATION				
TRAFFIC CONTROL CROSSOVER ON UNDIVIDED ROADWAY				
TE748				
NO.	DATE	REVISIONS	BY	APP'D
3				
2				
1				
DESIGNED	B.A.H.	QUANTITIES	TRACED	
DESIGN CK.	DETAIL CK.	QUAN. CK.	TRACE CK.	