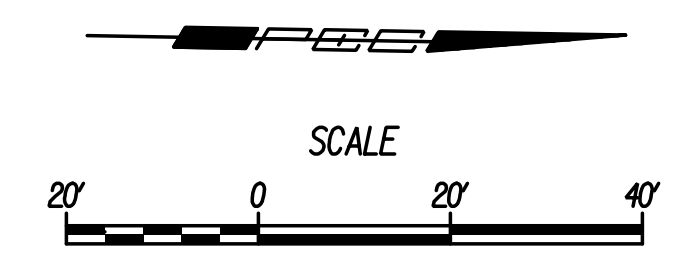
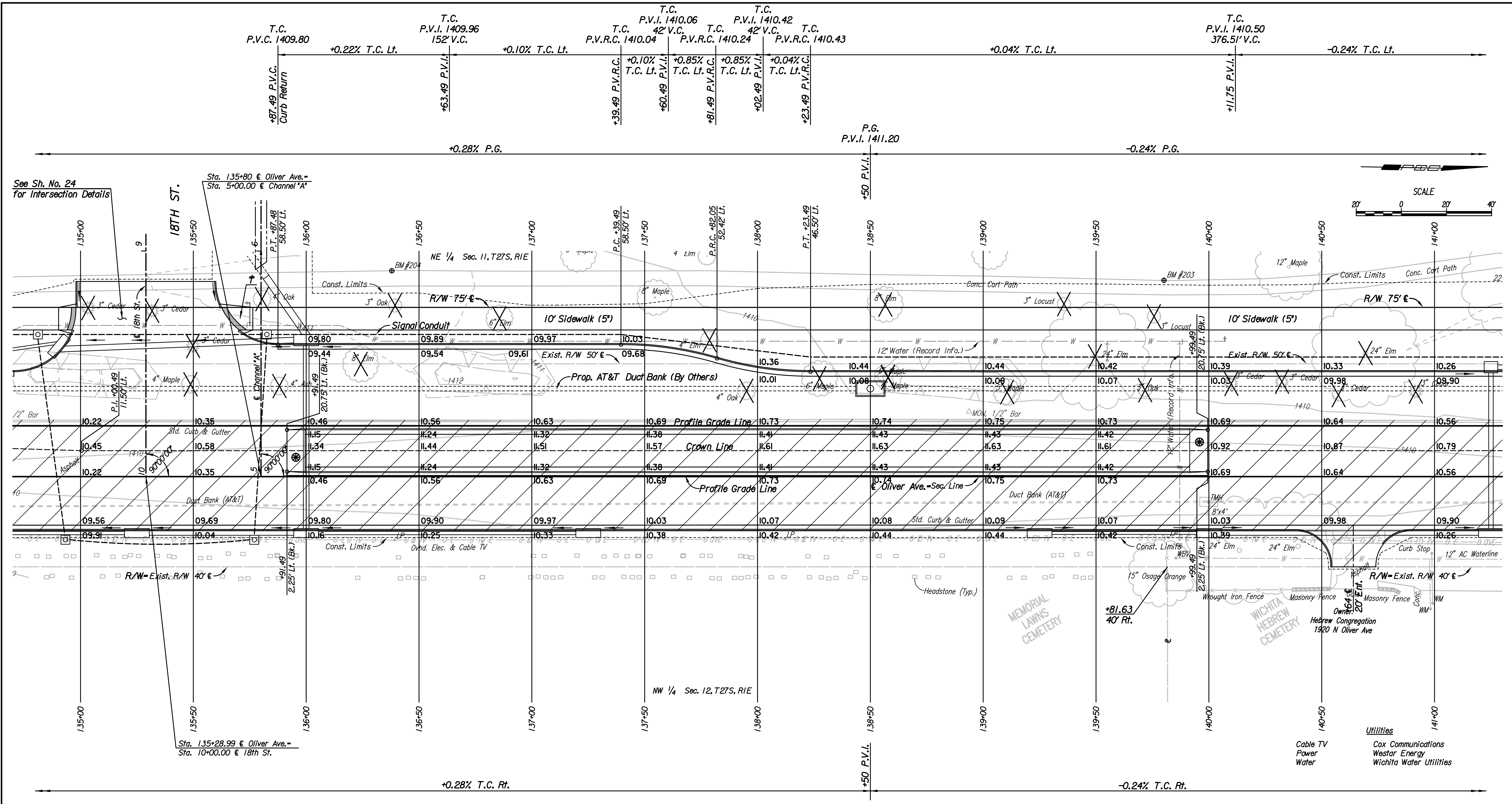


Plotted By: sheldon.bfn@date: 12/14/2017 3:58:44 PM
 FILE: U:\Wichita-Civil\2015\1508\1000\Trans\Road\DCN Project\Plan\1508-Plan_135.dgn



See Sh. No. 24
for Intersection Details

Sta. 135+80 @ Oliver Ave. =
Sta. 5+00.00 @ Channel "A"

Sta. 135+28.99 @ Oliver Ave. =
Sta. 10+00.00 @ 18th St.

BM #204 - Chiseled square on west edge of sidewalk on WSU golf course
2 poles south of southwest corner of Wichita Hebrew cemetery pole #a22285.
91.25' Lt. @ Sta. 136+37.96 NAVD88 Elev. = 1411.60

BM #203 - Chiseled square on west edge of sidewalk on WSU golf course
straight west of southwest corner of Wichita Hebrew cemetery.
87.01' Lt. @ Sta. 139+80.13 NAVD88 Elev. = 1409.68

- LEGEND**
- Pavement Removal
 - Wheelchair Ramp w/ Detectable Warning
 - 8' Median Ramp Nose Section
 - Denotes trees to be removed

No.	Revision	By	Date
17TH STREET AND OLIVER INTERSECTION			
PLAN			
STA. 135+00 TO STA. 141+00			
GARY JANZEN, P.E. - CITY ENGINEER CITY OF WICHITA PROJECT NO. 472-85214			
PROFESSIONAL ENGINEERING CONSULTANTS, P.A. 303 SOUTH TOPEKA WICHITA, KS 67202 316-262-2691 www.pec1.com			
Designed by	CKC	Job No.	15081
Drawn by	CP, SVB	Date	Dec., 2017
			Sht. 9 of 107