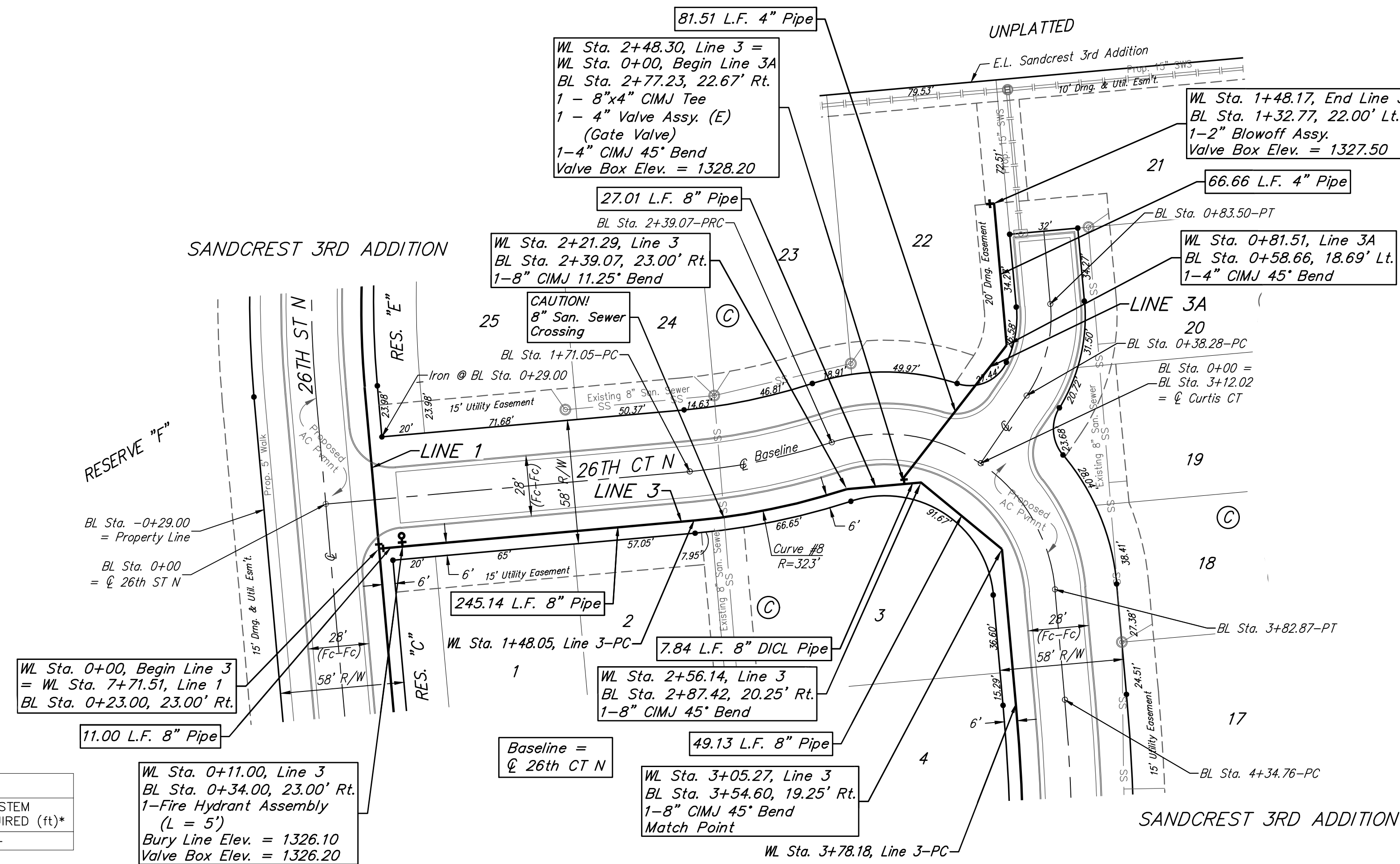


BENCHMARKS:
 City of Wichita Benchmark Disk
 34.9' S. & 31.2' W. of the SW Cor.,
 NW1/4, Sec. 2, Twp. 27-S, R-1-W.
 Elev. = 1327.57 NAVD88

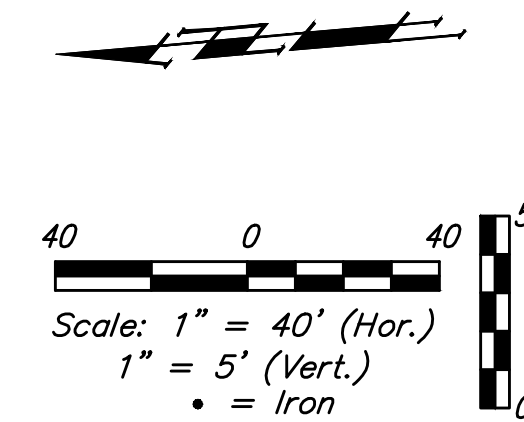
"□" cut in top of curb 1.5'
 north of the northeast corner of
 Lot 20, Block B, Sandcrest Addn.
 Elev. = 1327.21 NAVD88

"□" cut in top of east curb
 inlet at the southeast corner of
 the southern intersection of Curtis
 & Sandcrest.
 Elev. = 1322.05 NAVD88



Curve #8
 Curve Data Based on Centerline of Pipe
 Rad. = 323' Delta = 125°29' Tangent = 36.78'
 Arc = 73.24' L.C. = 73.08' Def./Ft. = 5.32143 Min.

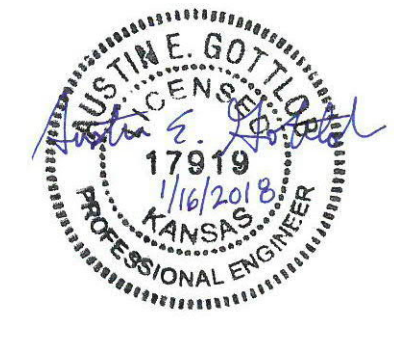
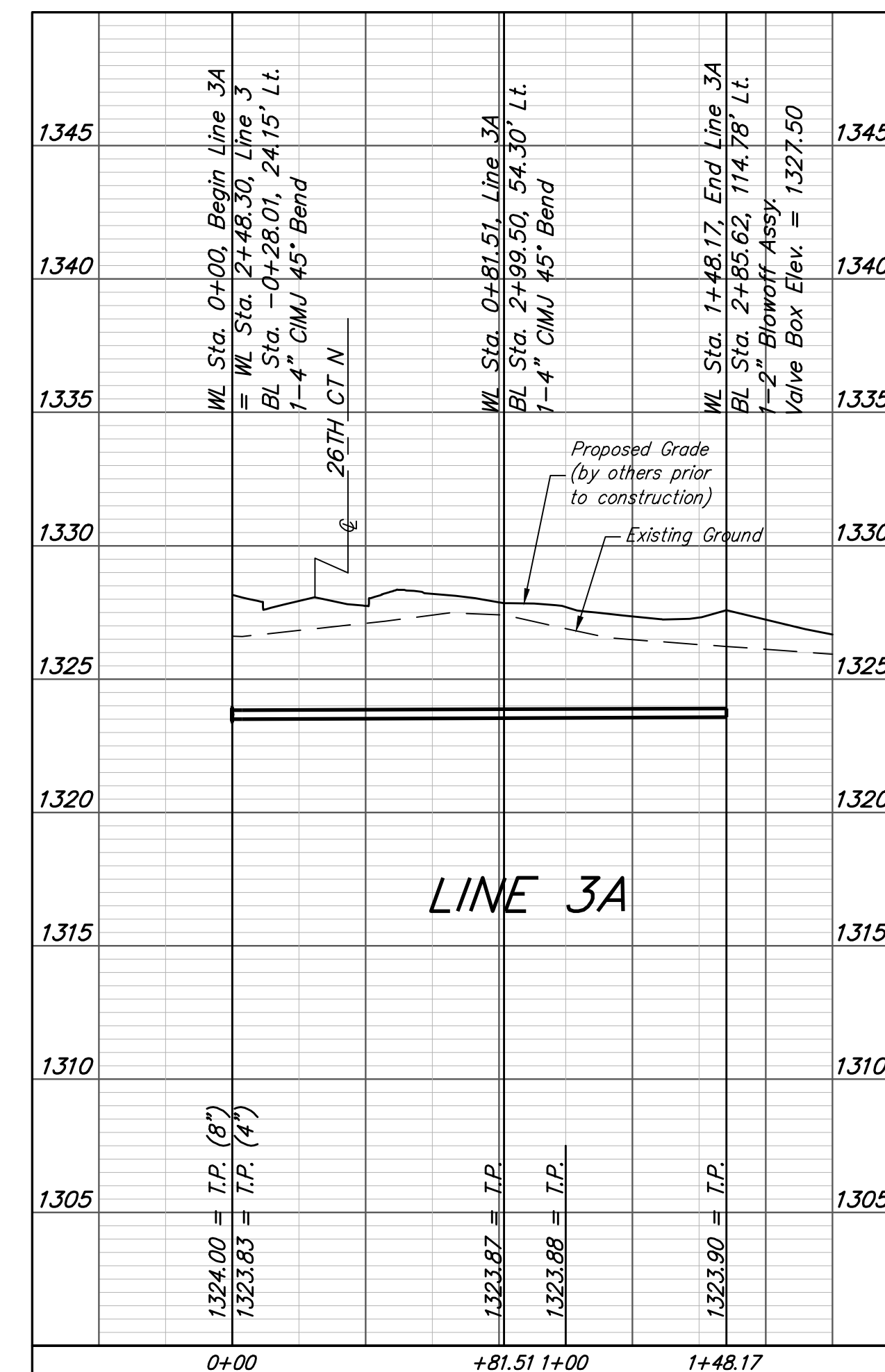
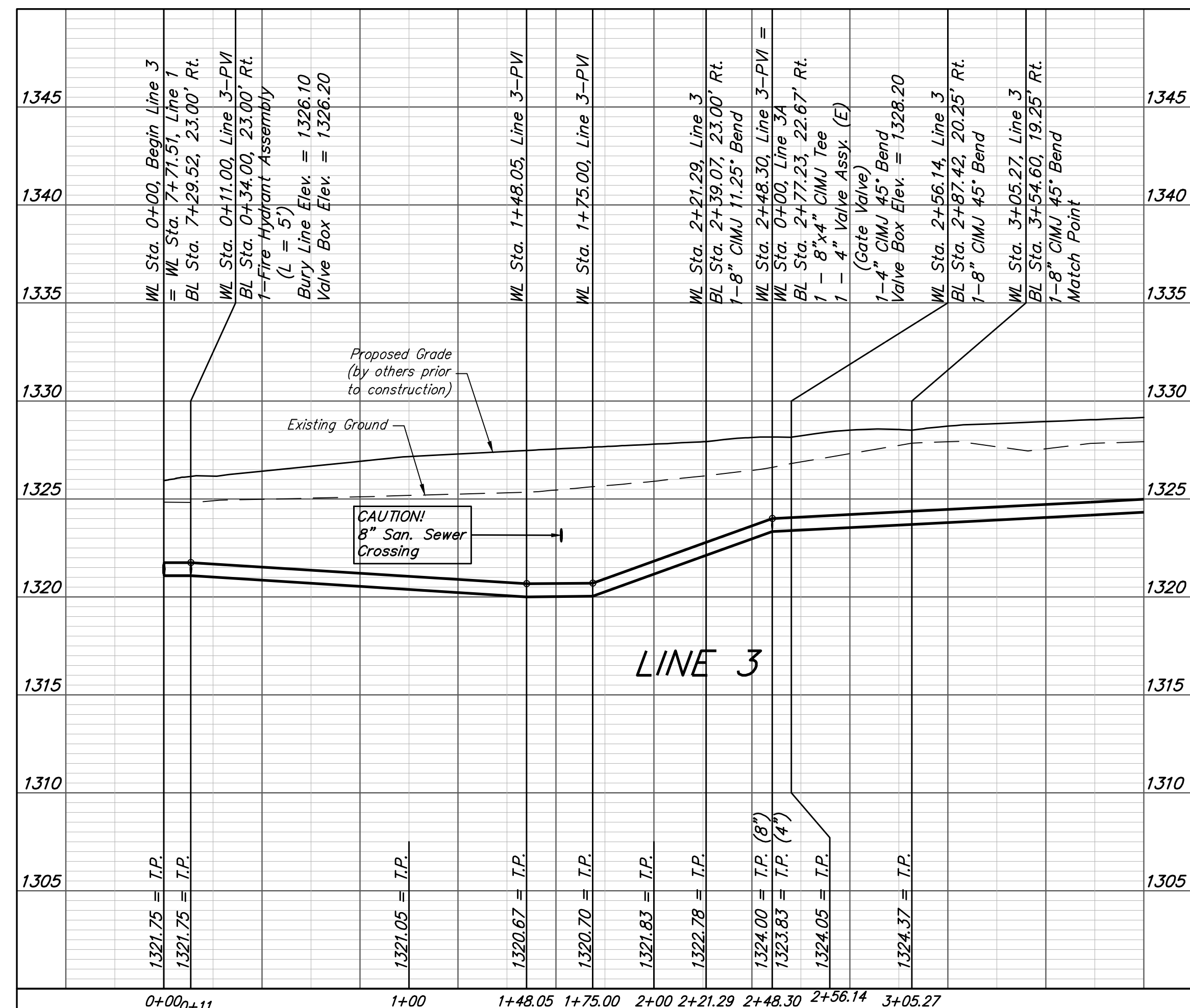
Station	Arc	8' Right	Defl.	Total Defl.
1+48.05	-	-	0'00'00"	0'00'00"
1+50.00	1.95'	2.00'	0'10'23"	0'10'23"
1+75.00	25.00'	25.61'	2'13'02"	2'23'25"
2+00.00	25.00'	25.61'	2'13'02"	4'36'27"
2+21.29	21.29'	21.81'	1'53'17"	6'29'44"



FIRE HYDRANTS REQUIRED

STATION	BURY LINE ELEVATION	TOP OF PIPE ELEVATION	FIRE HYDRANT BURY REQUIRED*	VALVE STEM EXT. REQUIRED (ft)*
0+11.00	1326.10	1321.75	5.00	-

WL Sta. 0+11.00, Line 3
 BL Sta. 0+34.00, 23.00' Rt.
 1-Fire Hydrant Assembly
 (L = 5')
 Bury Line Elev. = 1326.10
 Valve Box Elev. = 1326.20



Baughman Sandcrest 3rd Addition
LINE 3 & LINE 3A
 Water Distribution System

Baughman Company, P.A. 315 Ellis St. Wichita, KS 67211 P 316-262-7271 F 316-262-0149
 ENGINEERING | SURVEYING | PLANNING | LANDSCAPE ARCHITECTURE

PROJECT NUMBER: 448-90860
 DESIGN: AEG
 DRAWN: JAK
 APPROVED: [Signature]
 DATE: 1/15/18

REVISIONS:

SCALE: Noted
 SHEET: 7 OF 18

1:\Projects\Sandcrest 3rd Addition_1706\F290\Engineering\Phase 1\Wtr_1611-E582\WTR PLANS.dwg