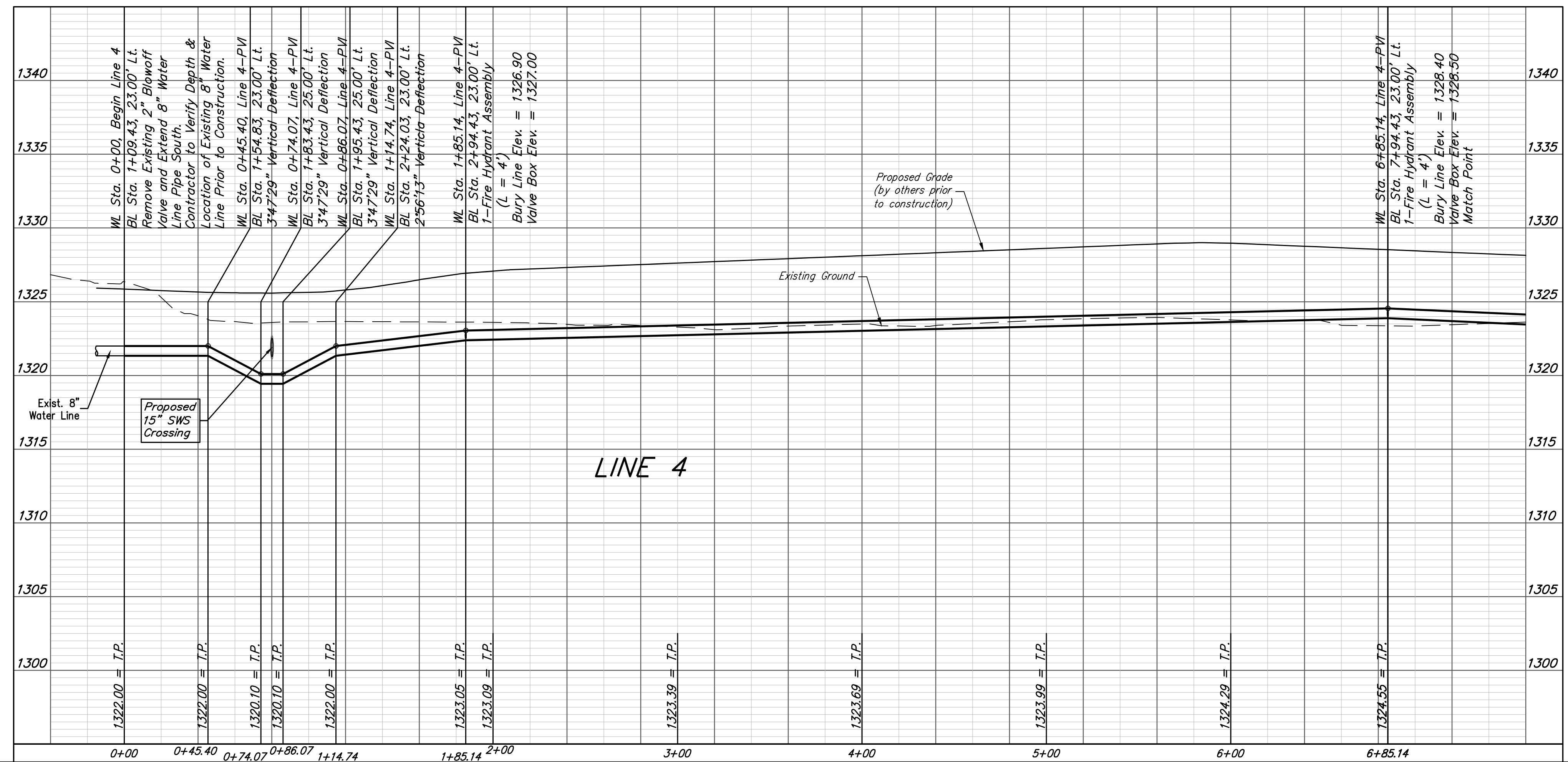
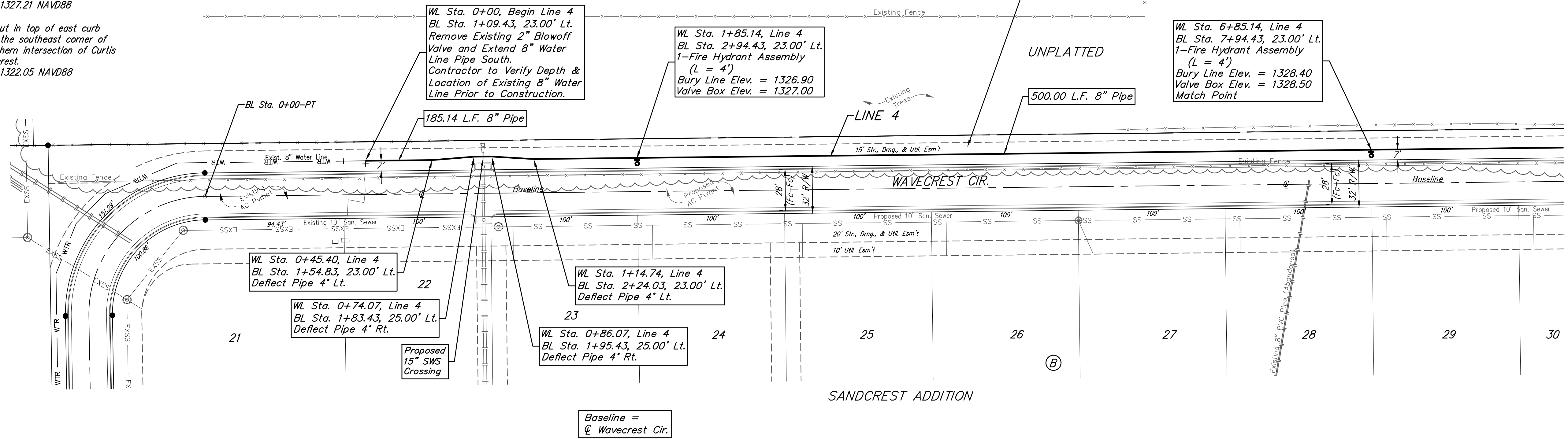
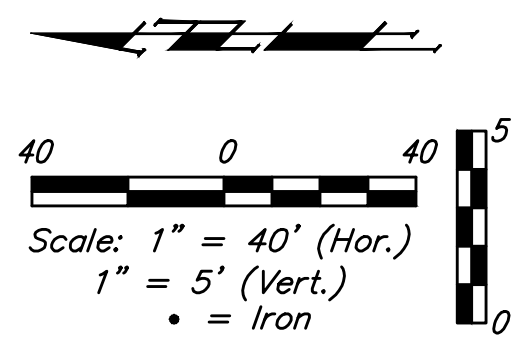


**BENCHMARKS:**  
 City of Wichita Benchmark Disk  
 34.9' S. & 31.2' W. of the SW Cor.,  
 NW1/4, Sec. 2, Twp. 27-S, R-1-W.  
 Elev. = 1327.57 NAVD88

"□" cut in top of curb 1.5'  
 north of the northeast corner of  
 Lot 20, Block B, Sandcrest Addn.  
 Elev. = 1327.21 NAVD88

"□" cut in top of east curb  
 inlet at the southeast corner of  
 the southern intersection of Curtis  
 & Sandcrest.  
 Elev. = 1322.05 NAVD88

FIRE HYDRANTS REQUIRED				
STATION	BURY LINE ELEVATION	TOP OF PIPE ELEVATION	FIRE HYDRANT BURY REQUIRED*	VALVE STEM EXT. REQUIRED (ft)*
1+85.14	1326.90	1326.65	4.50	-
6+85.14	1328.40	1324.55	4.50	-



**Baughman** Sandcrest 3rd Addition  
**LINE 4**  
 Water Distribution System

Baughman Company, P.A. 315 Ellis St. Wichita, KS 67211 P 316-262-7271 F 316-262-0149  
 ENGINEERING | SURVEYING | PLANNING | LANDSCAPE ARCHITECTURE

<small>PROJECT NUMBER 448-90860</small>	<small>DESIGN AEG</small>
<small>REVISIONS:</small>	<small>DRAWN JAK</small>
	<small>APPROVED DATE 1/15/18</small>
	<small>SCALE Noted</small>
	<small>SHEET</small>

9 OF 18

\\Projects\Sandcrest 3rd Addition\_1706P290\Engineering\Phase 1\Wtr\_1611-E582\WTR PLANS\jg