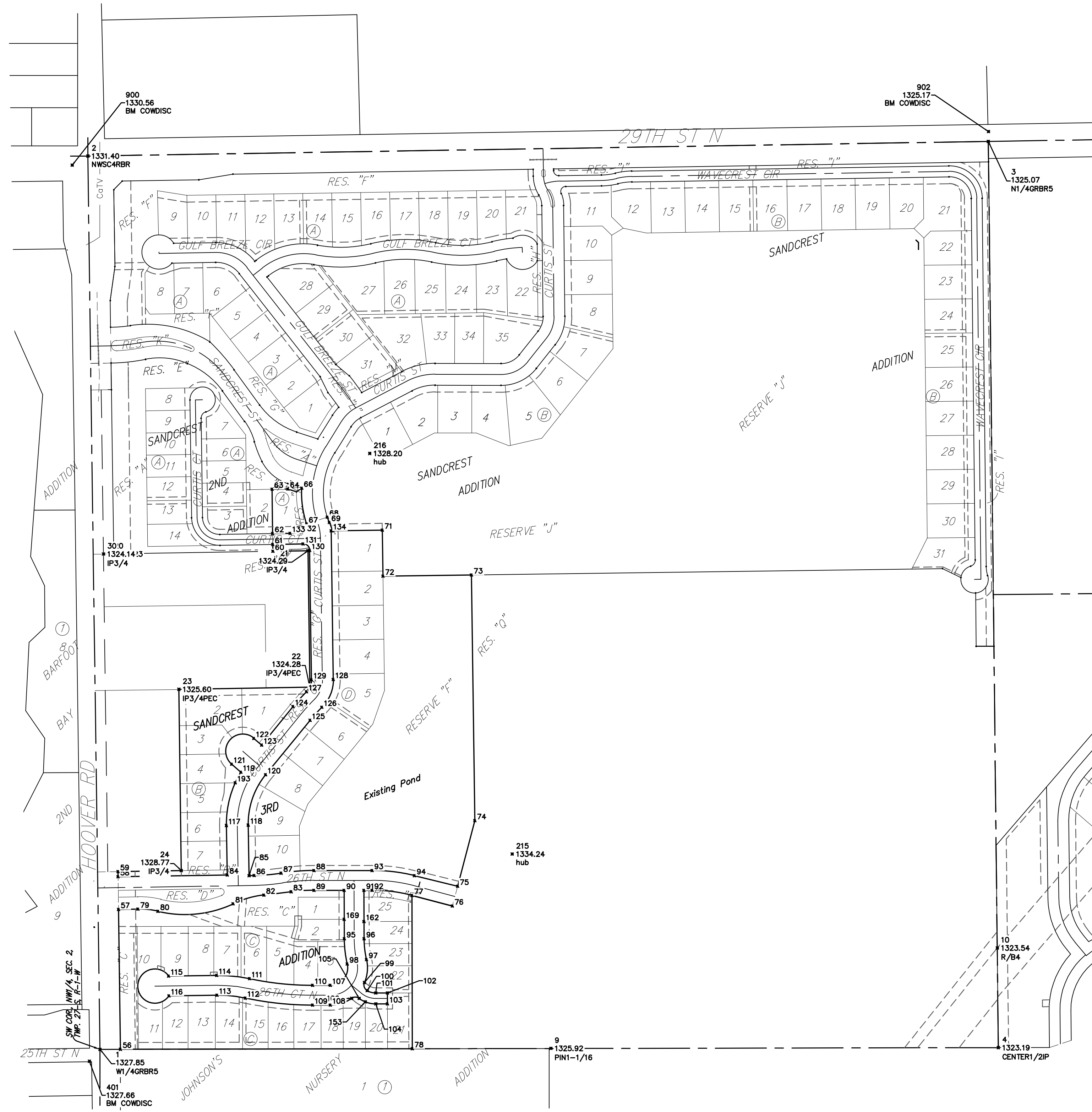


BENCHMARKS:
 City of Wichita Benchmark Disk
 34.9' S. & 31.2' W. of the SW
 Cor., NW1/4, Sec. 2, Twp. 27-S,
 R-1-W
 Elev. = 1327.57 NAVD88

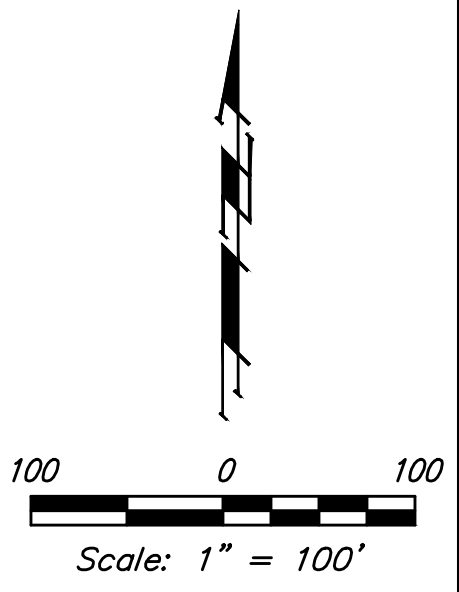
City of Wichita Benchmark Disk
 26.2' S. & 46.1' W. of the NW
 Cor., NW1/4, Sec. 2, Twp. 27-S,
 R-1-W
 Elev. = 1330.50 NAVD88


City of Wichita Benchmark Disk
 0.9' E. & 29' N. of the NE Cor.,
 NW1/4, Sec. 2, Twp. 27-S,
 R-1-W
 Elev. = 1325.19 NAVD88



COORDS				
Point #	Northing	Easting	Elev	Description
1	7,380.00	20,035.75	1327.85	WI/4GRBR5
2	10,000.00	20,000.00	1331.40	NWSC4RBR
3	10,042.82	22,641.78	1325.07	NI/4GRBR5
4	7,385.08	22,671.19	1323.19	CENTER1/2IP
9	7,383.01	21,358.40	1325.92	PINI-1/16
10	7,677.34	22,667.92	1323.54	R/B4
20	8,832.91	20,065.94	1324.23	BRS
21	8,842.34	20,645.79	1324.29	IP3/4
22	8,442.34	20,651.35	1324.28	IP3/4PEC
23	8,436.06	20,267.01	1325.60	IP3/4PEC
24	7,904.30	20,274.31	1328.77	IP3/4
30	8,832.60	20,045.92	1324.14	IP3/4
56	7,380.12	20,095.75		
57	7,790.27	20,080.16		
58	7,886.28	20,088.85		
59	7,901.26	20,088.64		
60	8,840.66	20,542.87		
61	8,860.66	20,542.60		
62	8,892.66	20,542.16		
63	9,022.65	20,540.39		
64	9,023.41	20,587.11		
66	9,025.95	20,627.56		
67	8,920.80	20,641.88		
68	8,940.97	20,702.62		
69	8,925.41	20,708.43		
70	8,900.70	20,717.40		
71	8,902.74	20,863.97		
72	8,767.95	20,865.85		
73	8,771.45	21,125.64		
74	8,050.78	21,135.48		
75	7,858.26	21,084.84		
76	7,800.33	21,069.61		
77	7,831.54	20,950.94		
78	7,381.83	20,951.81		
79	7,791.21	20,147.25		
80	7,784.77	20,205.85		
81	7,806.78	20,426.22		
82	7,832.48	20,516.55		
83	7,842.11	20,596.37		
84	7,891.49	20,408.97		
85	7,889.54	20,473.01		
86	7,889.78	20,488.01		
87	7,896.61	20,567.22		
88	7,904.22	20,663.53		
89	7,846.22	20,663.64		
90	7,846.39	20,752.06		
91	7,846.50	20,810.06		
92	7,846.54	20,834.04		
93	7,904.54	20,833.93		
94	7,889.54	20,958.21		

COORDS				
Point #	Northing	Easting	Elev	Description
95	7,704.34	20,752.33		
96	7,704.45	20,810.33		
97	7,643.54	20,817.38		
98	7,630.39	20,760.89		
99	7,576.06	20,811.48		
100	7,552.20	20,819.35		
101	7,545.35	20,844.72		
102	7,545.42	20,878.99		
103	7,513.42	20,879.05		
104	7,513.35	20,844.78		
105	7,529.33	20,795.98		
106	7,529.59	20,773.81		
107	7,567.83	20,711.32		
108	7,509.83	20,711.44		
109	7,509.73	20,659.55		
110	7,567.73	20,659.43		
111	7,587.23	20,474.42		
112	7,530.53	20,462.21		
113	7,538.80	20,379.09		
114	7,596.79	20,378.30		
115	7,594.86	20,237.12		
116	7,536.87	20,237.91		
117	8,036.55	20,406.60		
118	8,037.60	20,470.60		
119	8,192.88	20,448.98		
120	8,185.27	20,521.76		
121	8,216.22	20,421.89		
122	8,291.99	20,487.16		
123	8,272.26	20,510.05		
124	8,385.46	20,602.22		
125	8,345.05	20,651.85		
126	8,383.22	20,686.60		
127	8,428.85	20,641.72		
128	8,464.63	20,720.05		
129	8,463.74	20,656.05		
130	8,843.37	20,650.78		
131	8,862.11	20,631.47		
132	8,895.99	20,626.41		
133	8,893.49	20,593.58		
134	8,900.65	20,713.99		
153	7,519.27	20,814.04		
162	7,754.82	20,810.23		
169	7,761.39	20,752.22		
193	8,161.91	20,432.63		
215	7,952.88	21,245.12	1334.24	hub
216	9,127.58	20,827.18	1328.20	hub
401	7,345.09	20,004.51	1327.66	BM COWDISC
900	9,973.19	19,954.28	1330.56	BM COWDISC
902	10,071.83	22,642.16	1325.17	BM COWDISC





Baughman

Sandcrest 3rd Addition
COORDINATES
 Storm Water Drain Improvements

Baughman Company, P.A. 315 Ellis St. Wichita, KS 67211 P 316-262-7271 F 316-262-0149
 ENGINEERING | SURVEYING | PLANNING | LANDSCAPE ARCHITECTURE

PROJECT NUMBER 468	DESIGN AEG	DRAWN JAK
REVISIONS:	APPROVED	DATE 11/10/17
	SCALE Noted	
	SHEET	10 OF 12

I:\Projects\Sandcrest 3rd Addition_1706P290\Engineering\Phase 1\SWD_1710E829\SWD PLANS.dwg