

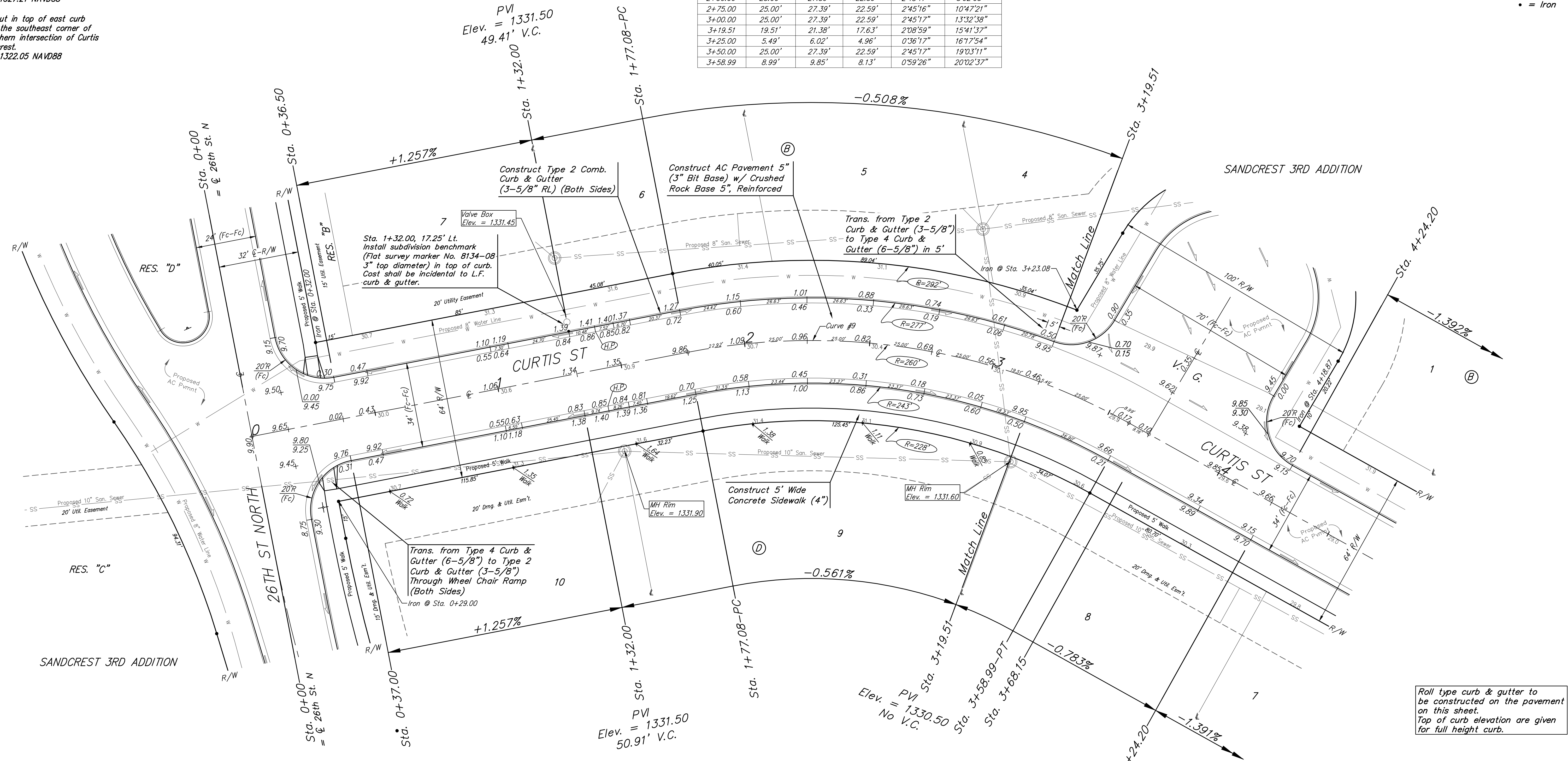
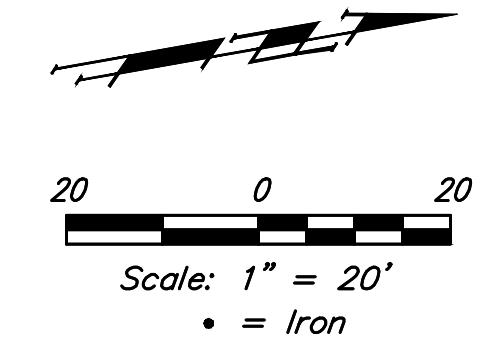
BENCHMARKS:
 City of Wichita Benchmark Disk
 34.9' S. & 31.2' W. of the SW Cor.,
 NW1/4, Sec. 2, Twp. 27-S, R-1-W.
 Elev. = 1327.57 NAVD88

"□" cut in top of curb 1.5'
 north of the northeast corner of
 Lot 20, Block B, Sandcrest Addn.
 Elev. = 1327.21 NAVD88

"□" cut in top of east curb
 inlet at the southeast corner of
 the southern intersection of Curtis
 & Sandcrest.
 Elev. = 1322.05 NAVD88

Curve #9
 Curve Data Based on Centerline
 Rad. = 260' Delta = 40'05"14" Tangent = 94.86'
 Arc = 181.91' L.C. = 178.22' Def./Fl. = 6.61105 Min.

Station	Arc	Face Chord Length		Defl.	Total Defl.
		8' Left	8' Right		
1+77.08	-	-	-	0'00"00"	0'00"00"
2+00.00	22.92'	25.12'	20.71'	2'31"32"	2'31"32"
2+25.00	25.00'	27.39'	22.59'	2'45"16"	5'16"48"
2+50.00	25.00'	27.39'	22.59'	2'45"17"	8'02"05"
2+75.00	25.00'	27.39'	22.59'	2'45"16"	10'47"21"
3+00.00	25.00'	27.39'	22.59'	2'45"17"	13'32"38"
3+19.51	19.51'	21.38'	17.63'	2'08"59"	15'41"37"
3+25.00	5.49'	6.02'	4.96'	0'36"17"	16'17"54"
3+50.00	25.00'	27.39'	22.59'	2'45"17"	19'03"11"
3+58.99	8.99'	9.85'	8.13'	0'59"26"	20'02"37"



Roll type curb & gutter to be constructed on the pavement on this sheet. Top of curb elevation are given for full height curb.

	Sandcrest 3rd Addition	
	CURTIS	
Sta. 4+83.12 to Sta. 4+83.12		
Baughman Company, P.A. 315 Ellis St. Wichita, KS 67211 P 316-262-7271 F 316-262-0149		
ENGINEERING SURVEYING PLANNING LANDSCAPE ARCHITECTURE		
PROJECT NUMBER 472-85423	DESIGN AEG	DRAWN JAK
REVISIONS:	APPROVED	DATE 1/15/18
	SCALE Noted	SHEET 10 OF 50