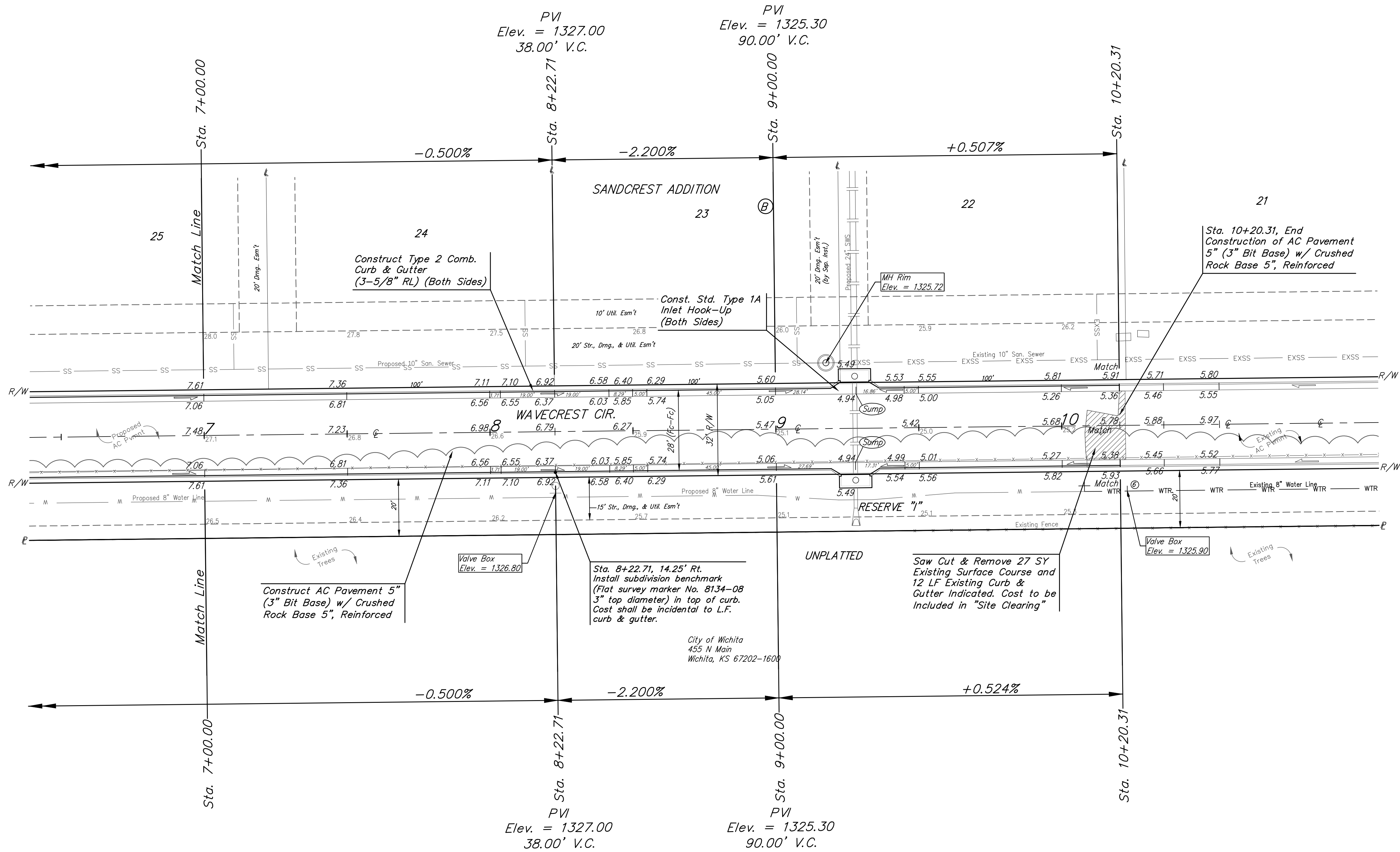
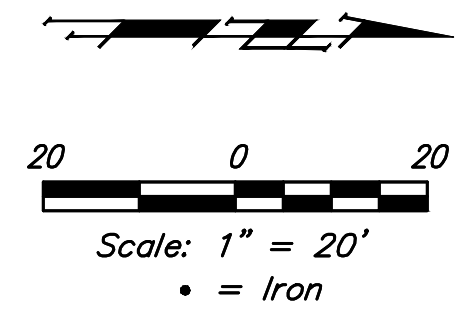


**BENCHMARKS:**  
 City of Wichita Benchmark Disk  
 34.9' S. & 31.2' W. of the SW Cor.,  
 NW1/4, Sec. 2, Twp. 27-S, R-1-W.  
 Elev. = 1327.57 NAVD88

"□" cut in top of curb 1.5'  
 north of the northeast corner of  
 Lot 20, Block B, Sandcrest Addn.  
 Elev. = 1327.21 NAVD88

"□" cut in top of east curb  
 inlet at the southeast corner of  
 the southern intersection of Curtis  
 & Sandcrest.  
 Elev. = 1327.05 NAVD88



Construct AC Pavement 5" (3" Bit Base) w/ Crushed Rock Base 5", Reinforced

Valve Box Elev. = 1326.80

Sta. 8+22.71, 14.25' Rt. Install subdivision benchmark (Flat survey marker No. 8134-08 3" top diameter) in top of curb. Cost shall be incidental to L.F. curb & gutter.

City of Wichita  
 455 N Main  
 Wichita, KS 67202-1600

UNPLATTED

Saw Cut & Remove 27 SY Existing Surface Course and 12 LF Existing Curb & Gutter Indicated. Cost to be Included in "Site Clearing"

Roll type curb & gutter to be constructed on the pavement on this sheet.  
 Top of curb elevation are given for full height curb.

VALVE NUMBER	BASELINE STATION	OFFSET DISTANCE	OFFSET DIRECTION
1	4+09.88	32.94'	Rt.
2	7+29.49	25'	Rt.
3	7+31.49	23'	Rt.
4	10+76.53	29'	Lt.
5	6+22.94	20.72'	Rt.
6	10+22.71	23'	Rt.

Street & Station	Location Description	Elevation
Curtis ST 1+32.00, 17.25' Lt.	Adjacent to Fire Hydrant at SE Corner of Lot 26, Block B	
Curtis ST 8+00.88, 17.25' Lt.	Adjacent to Fire Hydrant at SW Corner of Lot 3, Block D (opposite side of street)	
26th CT N 3+25.00, 14.25' Lt.	Adjacent to Fire Hydrant at SW Corner of Lot 5, Block C	
Wavecrest Cir 3+22.71, 14.25' Rt.	Adjacent to Fire Hydrant at NE Corner of Lot 29, Block B Sandcrest Addn. (opposite side of street)	
Wavecrest Cir 8+22.71, 14.25' Lt.	Adjacent to Fire Hydrant at NE Corner of Lot 24, Block B Sandcrest Addn. (opposite side of street)	

	Sandcrest 3rd Addition	
	<b>WAVECREST CIR</b> Sta. 7+22.71 to Sta. 10+20.31	
Baughman Company, P.A. 315 Ellis St. Wichita, KS 67211 P 316-262-7271 F 316-262-0149 ENGINEERING   SURVEYING   PLANNING   LANDSCAPE ARCHITECTURE		
PROJECT NUMBER <b>472-85423</b>	DESIGN AEG	DRAWN JAK
REVISIONS:	APPROVED Noted	DATE 1/15/18
		SCALE SHEET <b>18 OF 50</b>