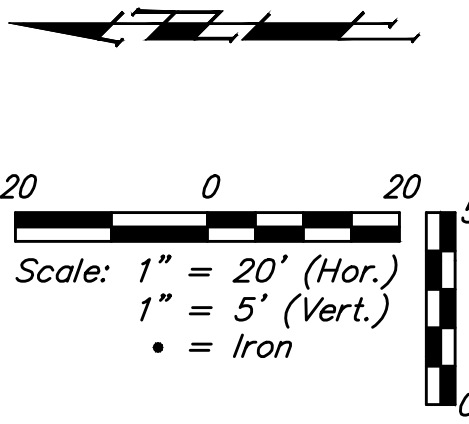


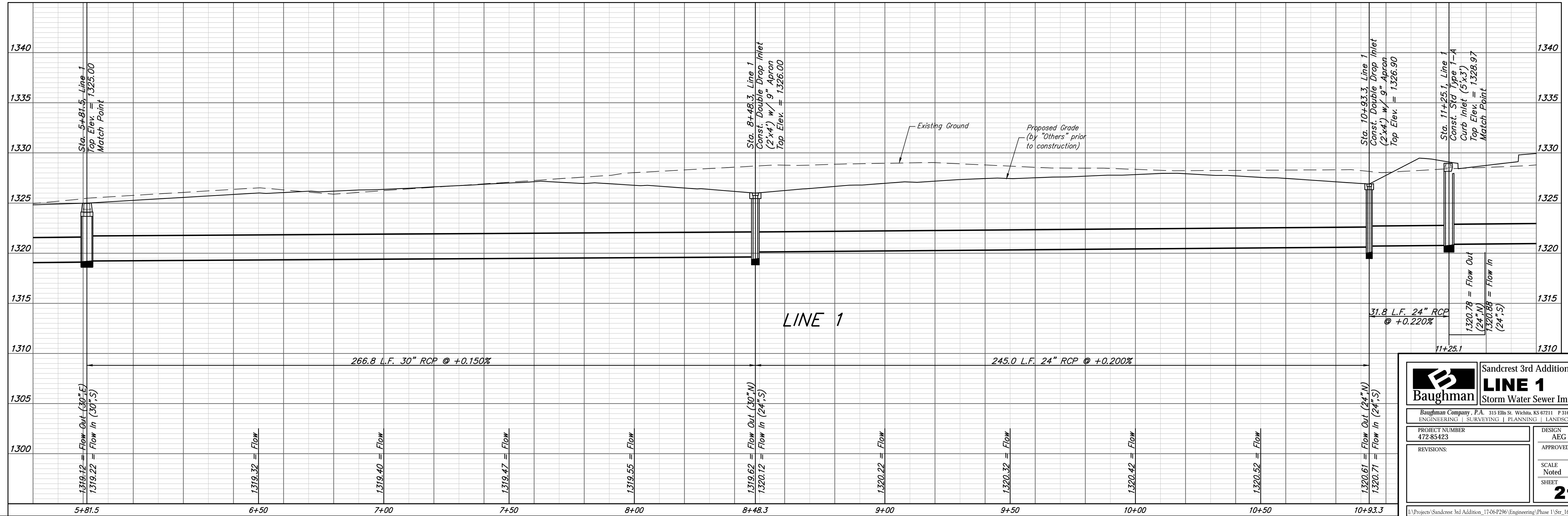
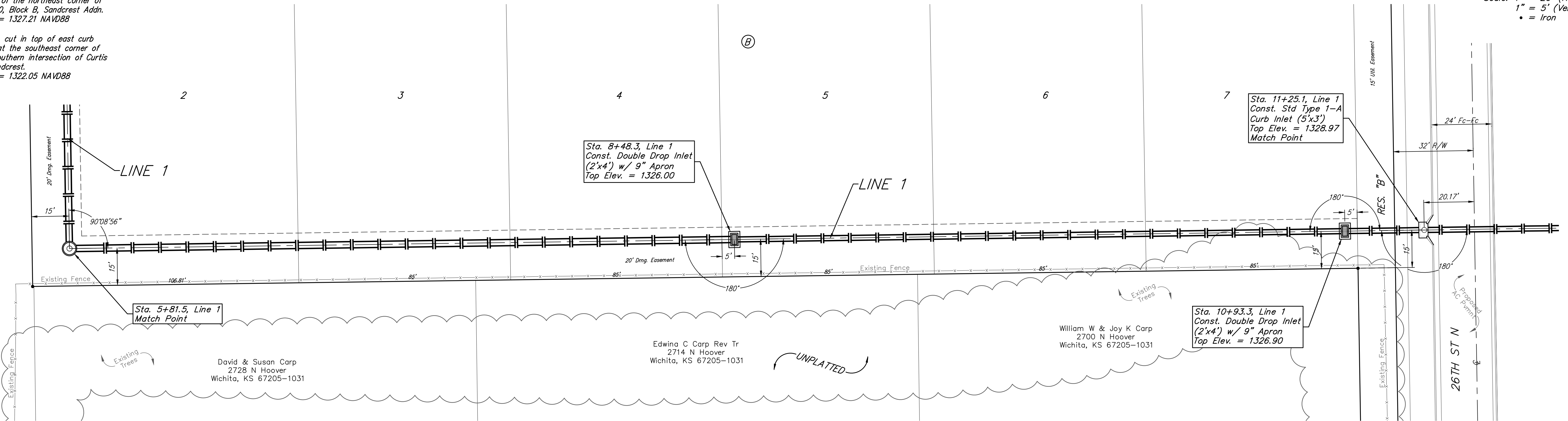
**BENCHMARKS:**  
 City of Wichita Benchmark Disk  
 34.9' S. & 31.2' W. of the SW Cor.,  
 NW1/4, Sec. 2, Twp. 27-S, R-1-W.  
 Elev. = 1327.57 NAVD88

"□" cut in top of curb 1.5'  
 north of the northeast corner of  
 Lot 20, Block B, Sandcrest Addn.  
 Elev. = 1327.21 NAVD88

"□" cut in top of east curb  
 inlet at the southeast corner of  
 the southern intersection of Curtis  
 & Sandcrest.  
 Elev. = 1322.05 NAVD88



SANDCREST 3RD ADDITION



		Sandcrest 3rd Addition	
		<b>LINE 1</b>	
Storm Water Sewer Improvements		Baughman Company, P.A. 315 Ellis St. Wichita, KS 67211 P 316-262-7271 F 316-262-0149 ENGINEERING   SURVEYING   PLANNING   LANDSCAPE ARCHITECTURE	
PROJECT NUMBER 472-85423	DESIGN AEG	DRAWN JAK	DATE 1/15/18
REVISIONS:	APPROVED	SCALE Noted	SHEET
		<b>21 OF 50</b>	

I:\Projects\Sandcrest 3rd Addition\_1706P290\Engineering\Phase 1\Str 16-11-E584\SWS PLANS.dwg