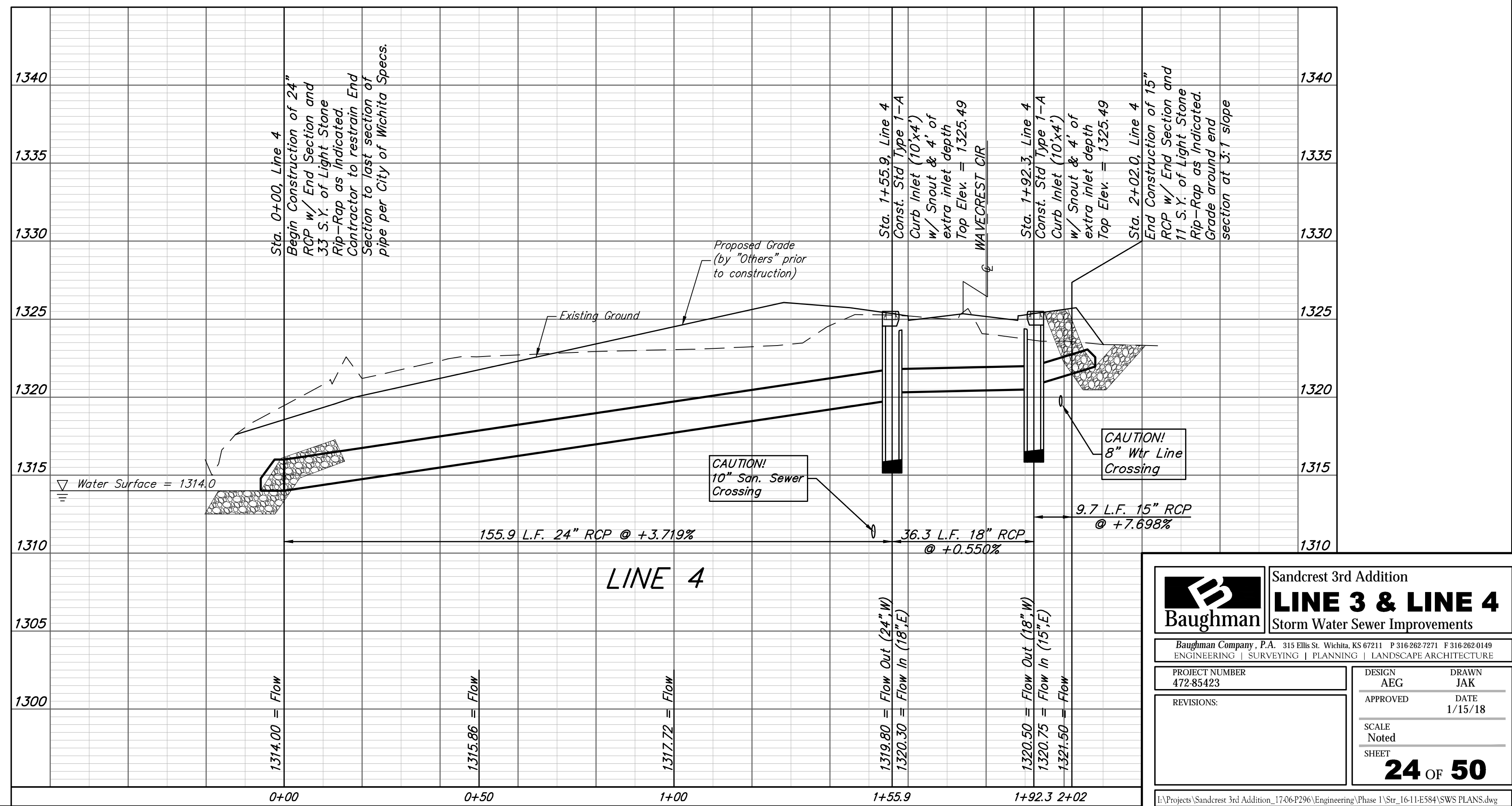
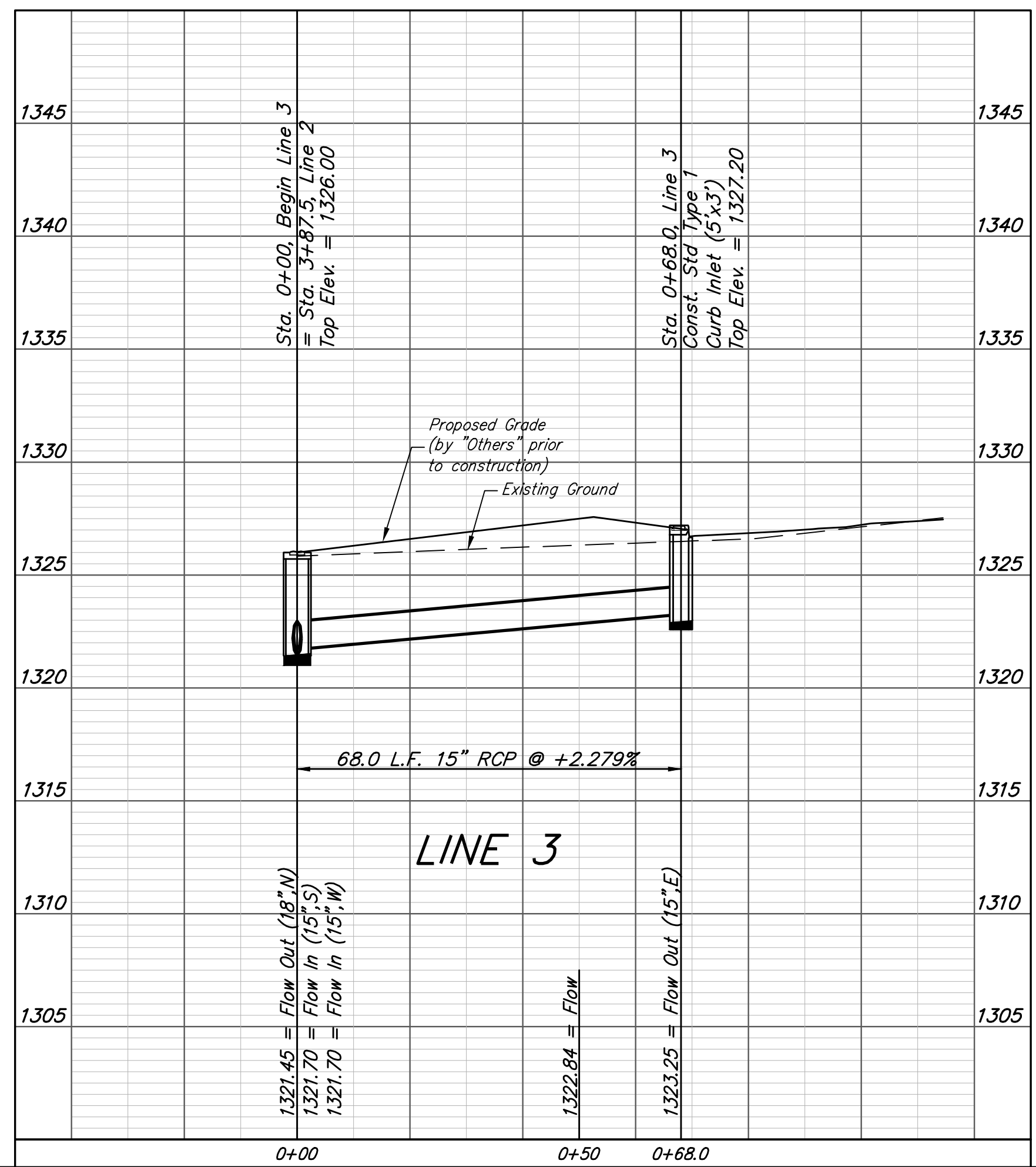
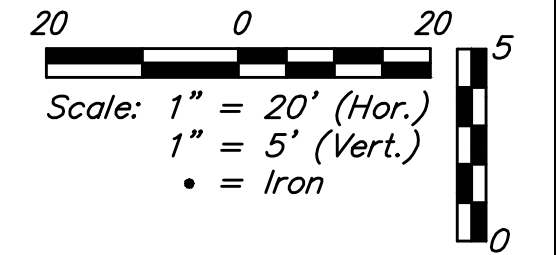
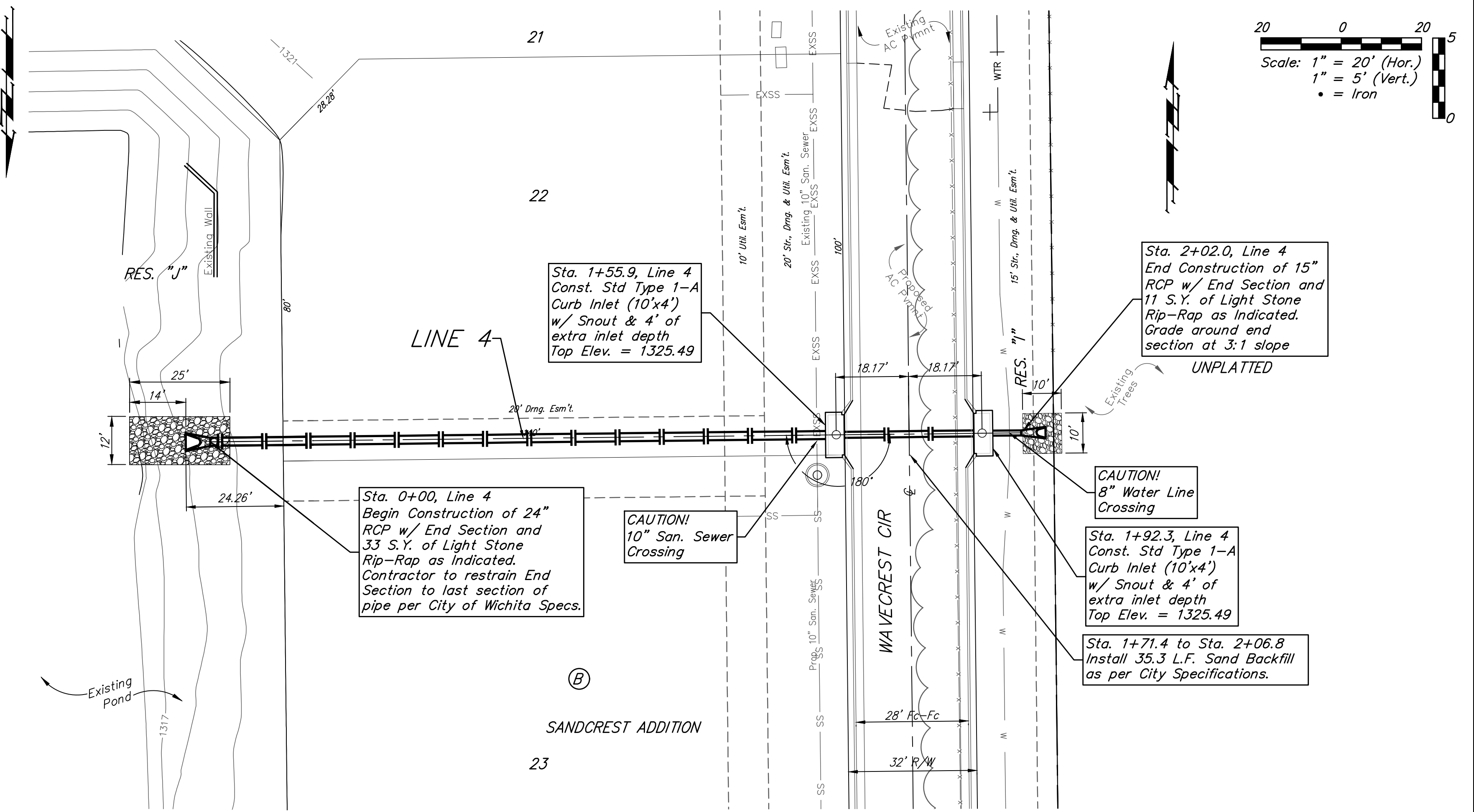
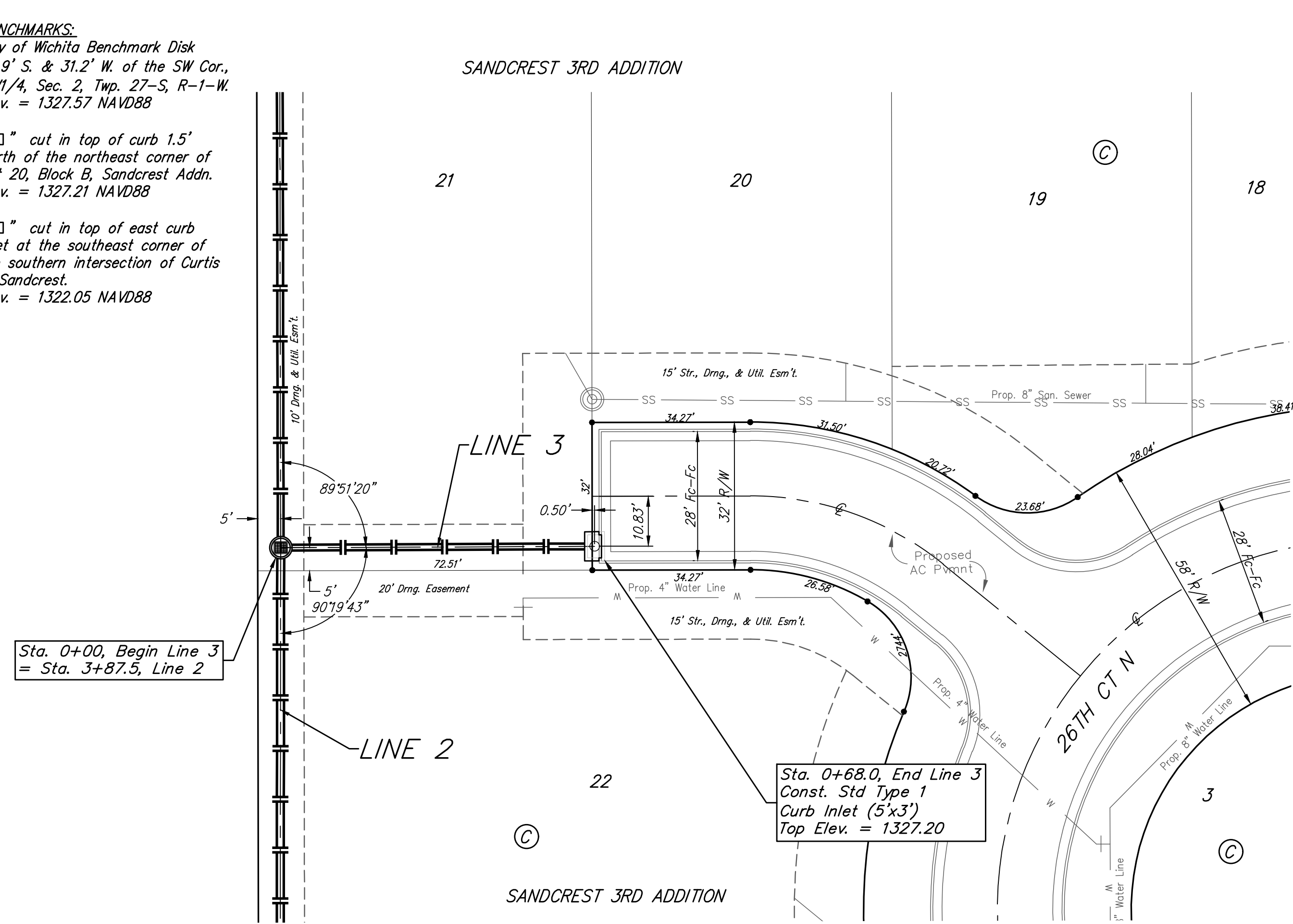


**BENCHMARKS:**  
 City of Wichita Benchmark Disk  
 34.9' S. & 31.2' W. of the SW Cor.,  
 NW1/4, Sec. 2, Twp. 27-S, R-1-W.  
 Elev. = 1327.57 NAVD88

"□" cut in top of curb 1.5'  
 north of the northeast corner of  
 Lot 20, Block B, Sandcrest Addn.  
 Elev. = 1327.21 NAVD88

"□" cut in top of east curb  
 inlet at the southeast corner of  
 the southern intersection of Curtis  
 & Sandcrest.  
 Elev. = 1322.05 NAVD88

SANDCREST 3RD ADDITION



**Baughman** Sandcrest 3rd Addition  
**LINE 3 & LINE 4**  
 Storm Water Sewer Improvements

Baughman Company, P.A. 315 Ellis St. Wichita, KS 67211 P 316-262-7271 F 316-262-0149  
 ENGINEERING | SURVEYING | PLANNING | LANDSCAPE ARCHITECTURE

PROJECT NUMBER: 472-85423  
 REVISIONS:

DESIGN: AEG  
 DRAWN: JAK  
 APPROVED: DATE: 1/15/18  
 SCALE: Noted  
 SHEET: **24 OF 50**

\\Projects\Sandcrest\_3rd Addition\_1706P290\Engineering\Phase 1\Str 16-11-E584\SW Plans.dwg