

GENERAL NOTES:

1. Contractor will be required to provide notice to utility companies a minimum of forty-eight (48) hours prior to any excavation, as follows:

Kansas One-Call 687-2470

The Contractor must notify the following in case of an emergency:

- Cox Communications 262-4270
- Kansas Gas Service 1-888-482-4950
- Westar Energy 383-8650
- Aquila Energy 1-800-303-0357
- ATT 268-2245
- City of Wichita Water Dept. 268-4563
- City of Wichita Sewer Maint. 268-4024
- City of Wichita Storm Sewer Maint. 268-4090
- City of Wichita Traffic Maint. 268-4034
- Conoco Phillips Pipeline Co. 1-877-267-2290
- Southern Star Pipeline Co. 529-6600
- Kinder-Morgan Pipeline Co. 1-888-844-5658

2. Utility service lines, poles, valve boxes, meters, and etcetera are to be adjusted as necessary by others prior to construction unless the plans specifically call for their adjustment by the Contractor or unless the plans specifically identify a utility to be adjusted by its owner during construction. Existing utilities and their location, as shown on the plans, represent the best information obtainable for design. The Contractor will be required to work around existing utilities within the right-of-way which do not conflict with proposed construction.

3. Rubble from the removal of miscellaneous structures and excess excavation which is to be wasted shall be disposed of on sites to be provided by the Contractor. These sites shall be approved by the Engineer as to suitability, appearance and site location. Locations, in the opinion of the Engineer, that will leave an unsightly appearance will not be approved. All disposal sites must be approved by the Kansas Department of Health and Environment. Material either stockpiled or disposed of in a flood plain would require a Kansas State Board of Agriculture permit. Any material dumped in waters of the United States or wetlands is subject to U.S. Corps of Engineers permitting regulations. Any material buried or stockpiled beyond approved construction limits would require additional archaeological investigations unless buried in a previously approved borrow location.

4. Trees and shrubs in public right-of-way which are in direct conflict with proposed new construction shall be removed by the Contractor ONLY with the Developer or Baughman Company approval. Trees and shrubs which are not in direct conflict with proposed new construction shall be saved and protected from damage.

5. The Contractor shall give all property owners and/or tenants of developed property abutting the construction of this project a minimum of ten (10) days notice prior to start of construction.

6. The Contractor shall be responsible for preserving property irons. The Contractor will be required to re-establish any property irons which are damaged or destroyed by his construction operations. Such irons shall be re-established by a licensed Land Surveyor in accordance with state laws.

7. All existing and proposed erosion control measures including silt fencing, erosion control mat, straw bales, inlet barriers, and const. entrance shall be maintained

throughout construction by the Contractor and until project is accepted by the City of Wichita. The on-site Engineer shall complete weekly reports on the status of erosion control measures. The Contractor shall be required to comply with maintenance and/or replacement of erosion control measures as determined by the on-site Engineer until project is accepted by City of Wichita.

8. A saw cut of at least one-half the depth of existing surface courses or one-fourth the depth of the existing total pavement thickness shall be provided at locations where proposed construction abuts the existing surface course or pavement for which partial removal of that surface or pavement is required. Sawed joint to facilitate removal within three (3) feet of existing joints will not be permitted and for such instances the limits of removal shall extend to the existing joint. Such saw cuts will not be paid for directly and this cost shall be considered as subsidiary to the removal of the surface or pavement.

9. All areas disturbed during construction shall be seeded as noted on the Erosion Control Plan. Contractor shall prepare ground per City of Wichita Specifications. All costs associated with seeding shall be included in bid item "Project Seeding"

10. The Contractor shall adjust valve boxes as necessary to match proposed grade. Cost to be included in bid item, "Site Restoration."

11. The Contractor shall drain any standing water in sump areas of the proposed pavement. Contractor shall overexcavate and recompact these areas as required to maintain compaction of 95% Standard Proctor Density. Cost to be incidental to pavement.

12. Limits of earthwork shall match existing ground elevations at the right-of-way line unless otherwise noted on the plans with a new finished grade elevation. When a new finished grade elevation is shown, the earthwork shall extend one foot beyond the right-of-way line and then slope up or down using permissible slopes to match the existing ground surface.

13. The Developer for this project is Jay Russell
P.O. Box 75337
Wichita, KS 67272
(316) 722-2417
jwrsell1105@cloud.com

14. Excess excavation shall be stockpiled or spread on-site at a location determined by the Developer or Design Engineer.

Street Paving and Incidental Storm Water Sewer for 26th Street N to serve

SANDCREST & SANDCREST 3RD ADDITION - PHASE II

26TH ST. N.: From the east line of Hoover Rd. east line of Lot 25, Block C

CURTIS ST.: From the north line of the plat of Sandcrest 3rd, south to the north line of 26th St. N.

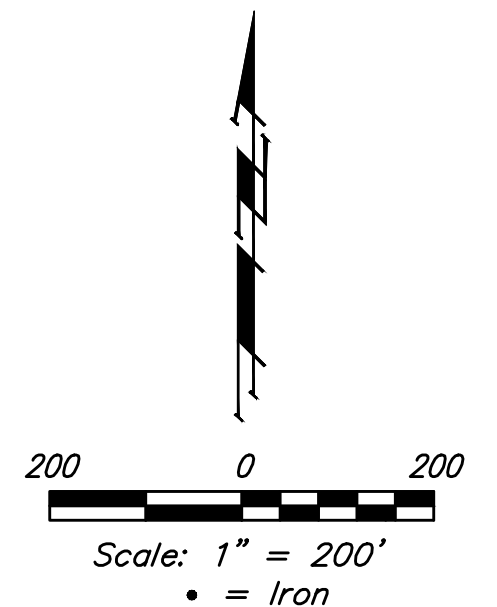
26TH CT. N.: From the south line of 26th St. N., south and west to and including the cul-de-sac
Wavcrest Cir.: From the south line of Lot 21, Block B, Sandcrest, south to and including the cul-de-sac

CITY OF WICHITA, KANSAS

Gary Janzen, P.E. City Engineer

Project Number: 472-85423

OCA Number: 766407



SHEET INDEX

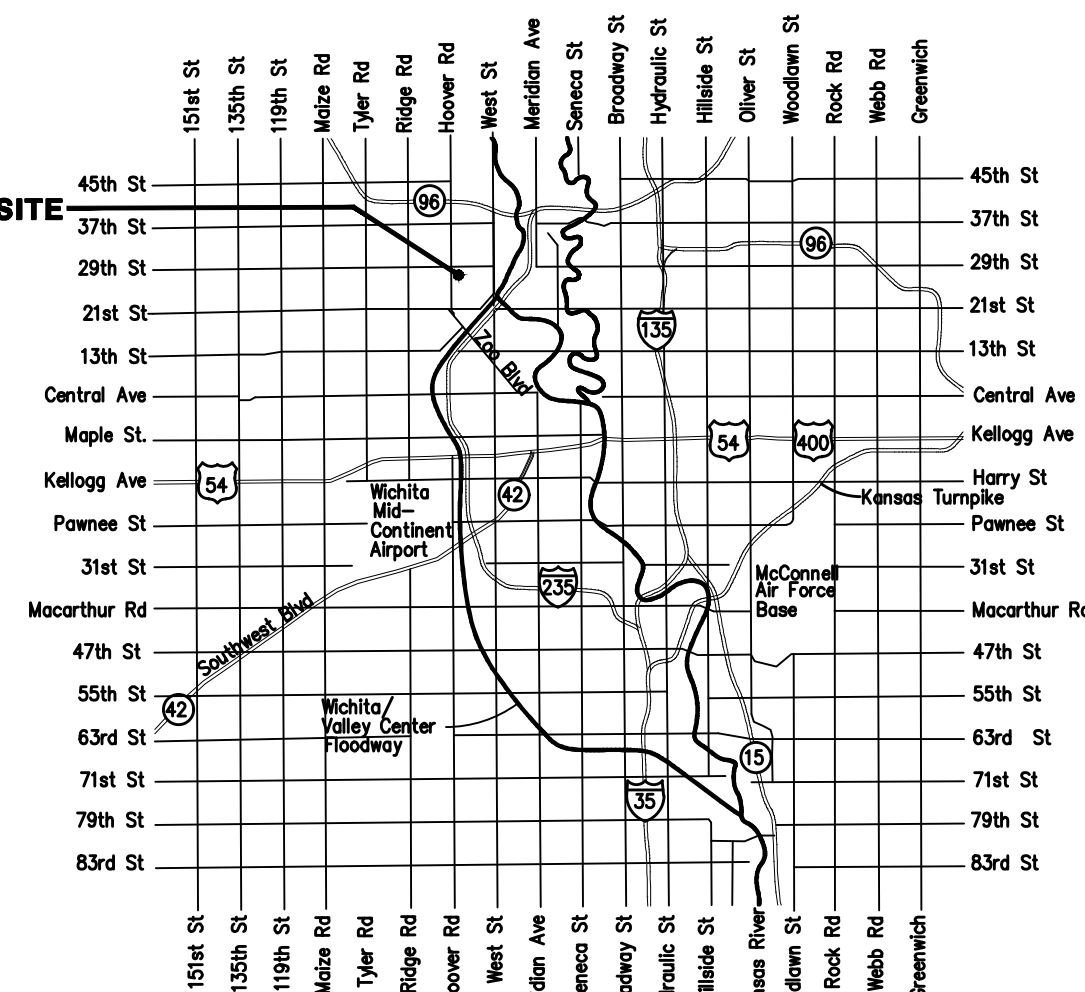
Title Sheet	1
Asphalt Paving Detail	2
Curb & Gutter Details	3
Sign Details	4
Pavement Underdrain Details	5
Valley Gutter Details	6
Wheelchair Ramp Details	7
26th Street N	8-9
Curtis	10-12
26th Ct N	13-15
Wavcrest Cir	16-18
SWS Line 1	19-22
SWS Line 2	23
SWS Line 3 & 4	24
SWS Line 5	25
Erosion Control Plan	26
Erosion Control BMP Details	27-31
Std. Type 1A Curb Inlet Detail	32
Std. Manhole Detail	33
Drop Inlet Detail	34
Backyard Inlet Detail	35
Frame and Cover Details	36
Cross Sections	37-47
Coordinate Sheet	48
Copy of Plat	49-50

BENCHMARKS

City of Wichita Benchmark Disk
34.9' S. & 31.2' W. of the SW Cor.,
NW1/4, Sec. 2, Twp. 27-S, R-1-W.
Elev. = 1327.57 NAVD88

"□" cut in top of curb 1.5'
north of the northeast corner of
Lot 20, Block B, Sandcrest Addn.
Elev. = 1327.21 NAVD88

"□" cut in top of east curb
inlet at the southeast corner of
the southern intersection of Curtis
& Sandcrest.
Elev. = 1322.05 NAVD88



Vicinity Map

Storm Water Certification:

These construction plans were prepared in accordance with the current Storm Water Management Regulations as set forth in the City of Wichita's Storm Water Management Ordinance 16.32 and the policies/guidelines presented in the Wichita/Sedgwick County Storm Water Manual.

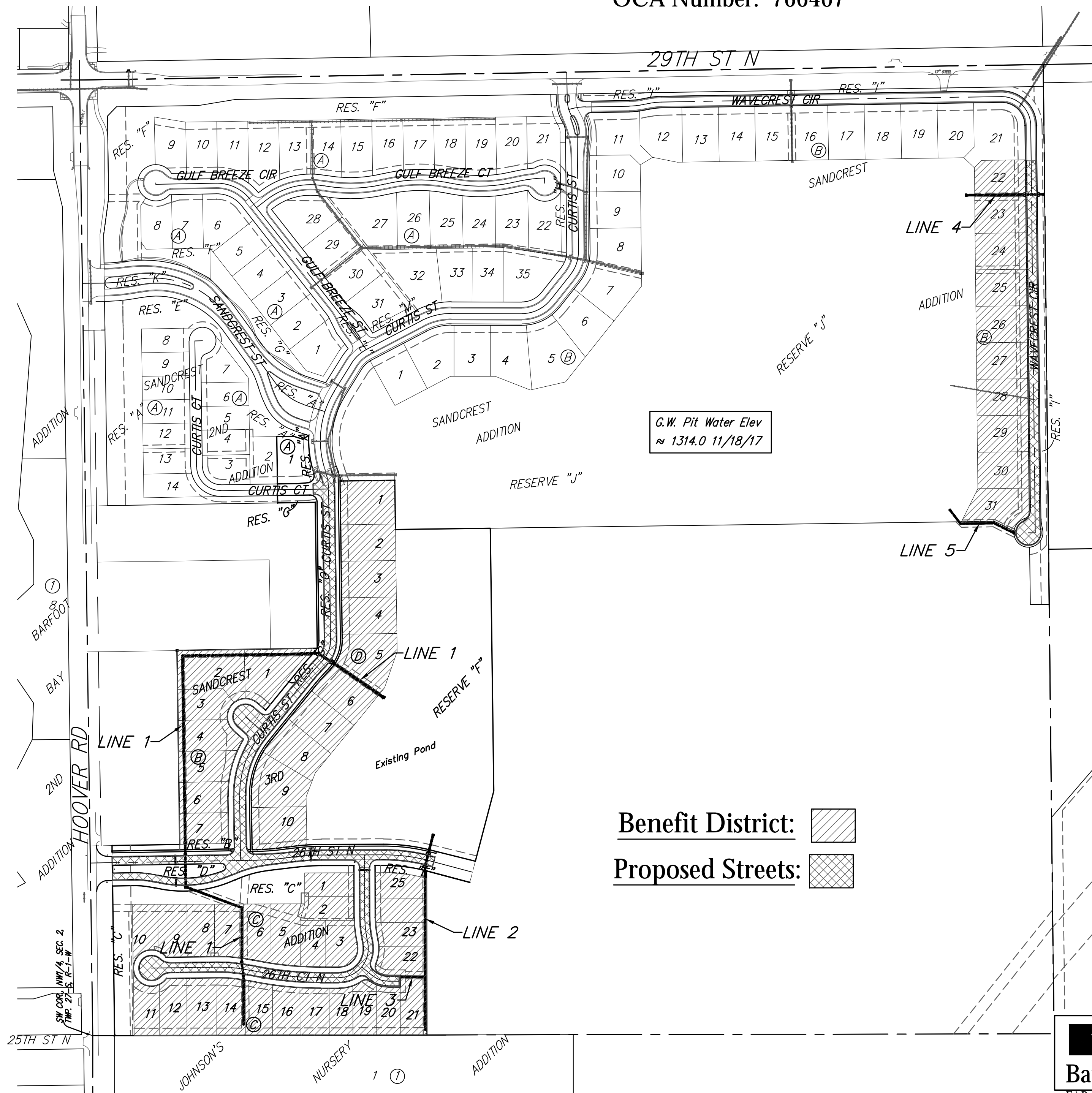
Disturbed Area = 20.5 ac. Sandcrest 3rd Addition
6.2 ac. Sandcrest Addition

Water Quality Treatment: Provided by snouts and sump inlets.
Downstream Channel Protection: Provided for by the existing non-discharging sand pit

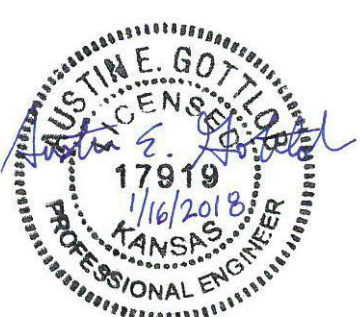
Project Earthwork Totals (CY unadjusted)

Street (R/W)	Excavation	Compacted Fill	Loose Fill
Street (R/W)	2,121	0	1,887
Project Total	2,121	0	1,887

Total Project Length
3,969 L.F. = 0.75 Miles



Benefit District: [Hatched Box]
Proposed Streets: [Cross-hatched Box]

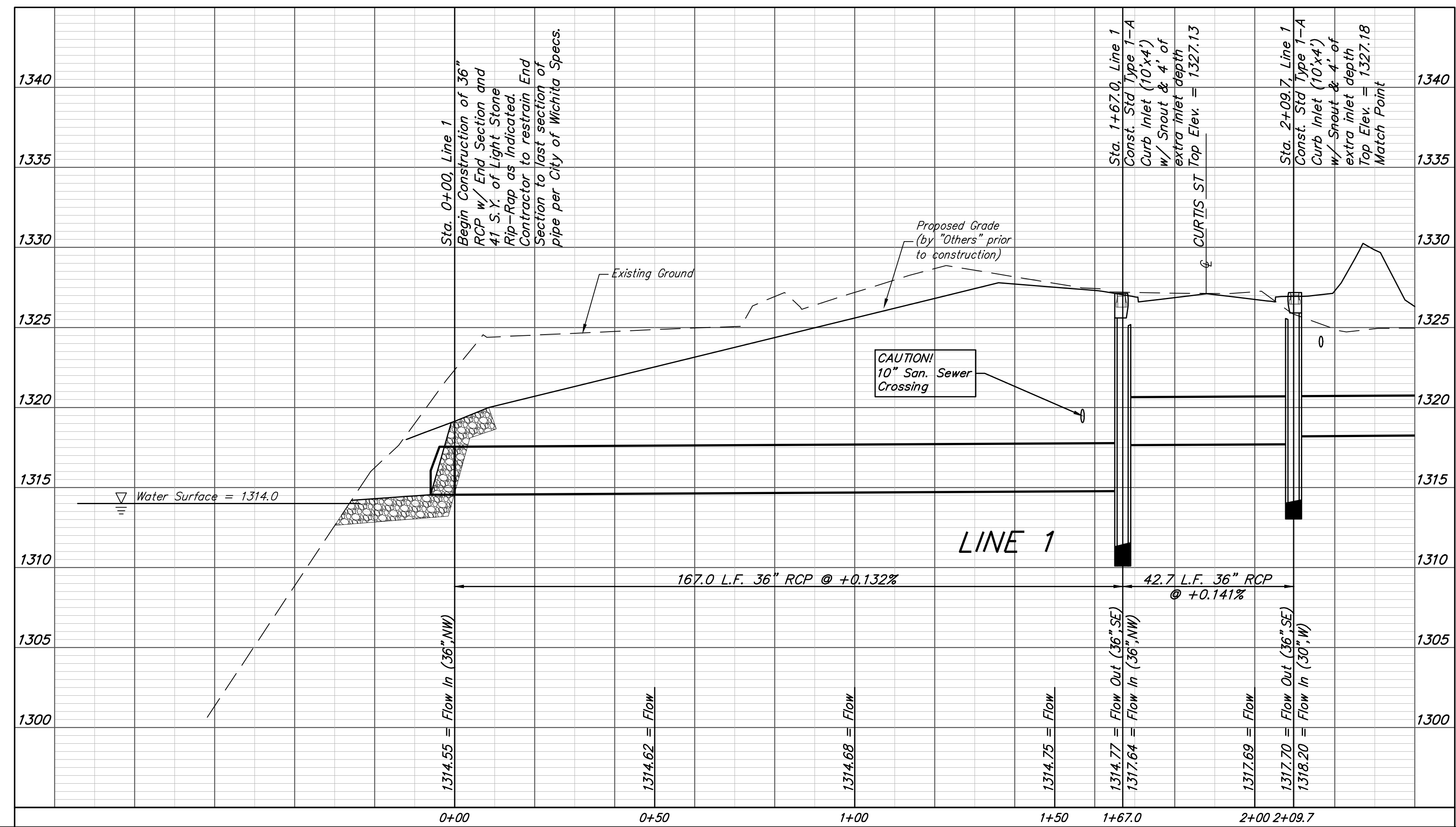
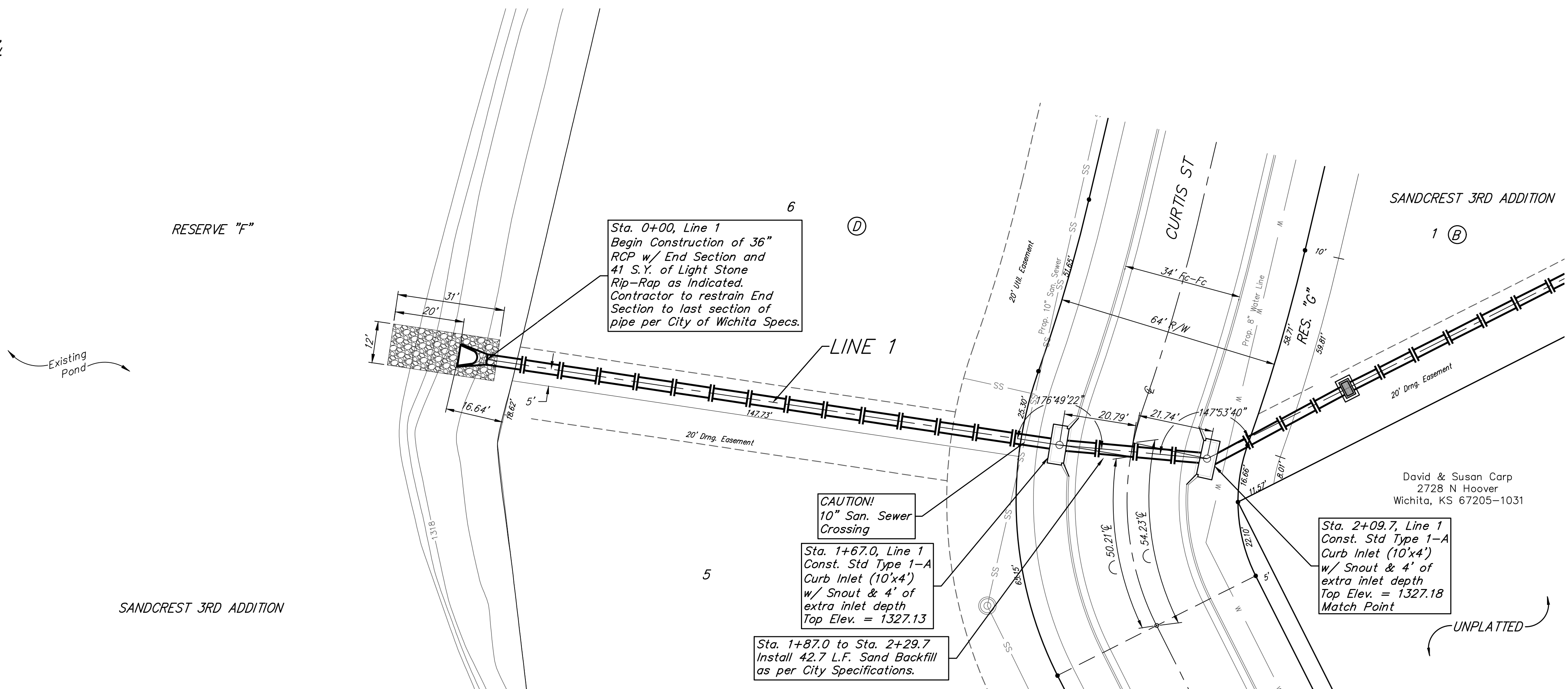
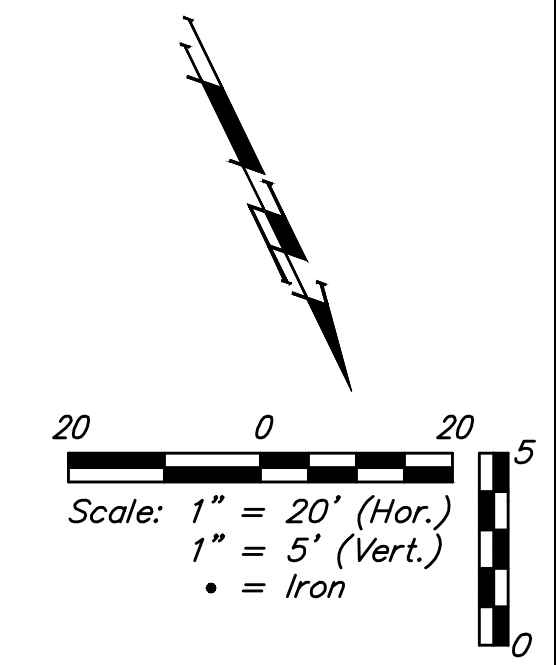


Baughman Company, P.A. 315 Ellis St. Wichita, KS 67211 P 316-262-7271 F 316-262-0149
ENGINEERING | SURVEYING | PLANNING | LANDSCAPE ARCHITECTURE

BENCHMARKS:
 City of Wichita Benchmark Disk
 34.9' S. & 31.2' W. of the SW Cor.,
 NW1/4, Sec. 2, Twp. 27-S, R-1-W.
 Elev. = 1327.57 NAVD88

"□" cut in top of curb 1.5'
 north of the northeast corner of
 Lot 20, Block B, Sandcrest Addn.
 Elev. = 1327.21 NAVD88

"□" cut in top of east curb
 inlet at the southeast corner of
 the southern intersection of Curtis
 & Sandcrest.
 Elev. = 1322.05 NAVD88



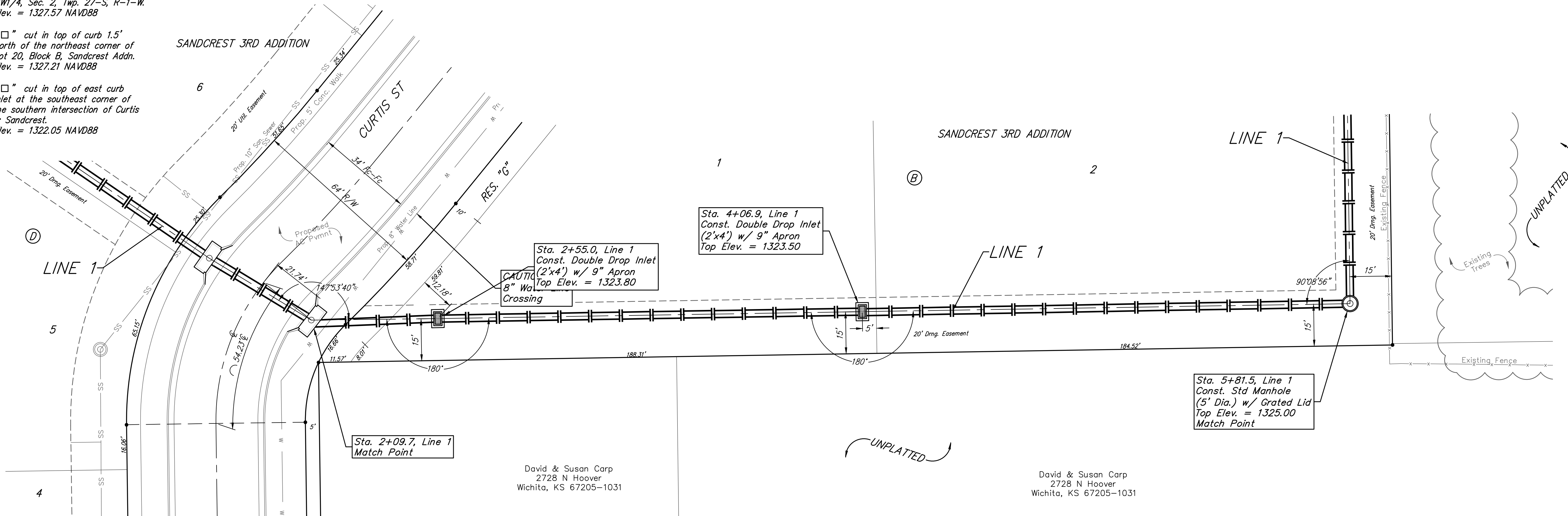
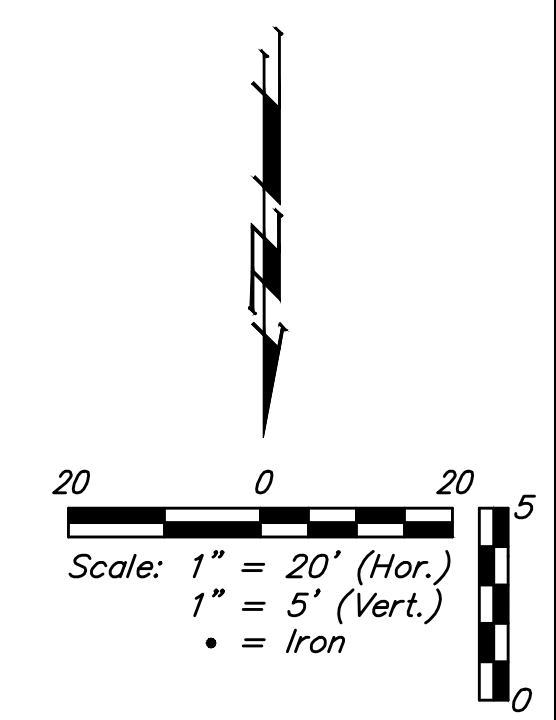
		Sandcrest 3rd Addition	
		LINE 1	
		Storm Water Sewer Improvements	
<small>Baughman Company, P.A. 315 Ellis St. Wichita, KS 67211 P 316-262-7271 F 316-262-0149 ENGINEERING SURVEYING PLANNING LANDSCAPE ARCHITECTURE</small>			
PROJECT NUMBER 472-85423	DESIGN AEG	DRAWN JAK	
REVISIONS:	APPROVED	DATE 1/15/18	
	SCALE Noted		
			19 OF 50

I:\Projects\Sandcrest 3rd Addition_1706P290\Engineering\Phase 1\Str 16-11-E584\SWS PLANS.dwg

BENCHMARKS:
 City of Wichita Benchmark Disk
 34.9' S. & 31.2' W. of the SW Cor.,
 NW1/4, Sec. 2, Twp. 27-S, R-1-W.
 Elev. = 1327.57 NAVD88

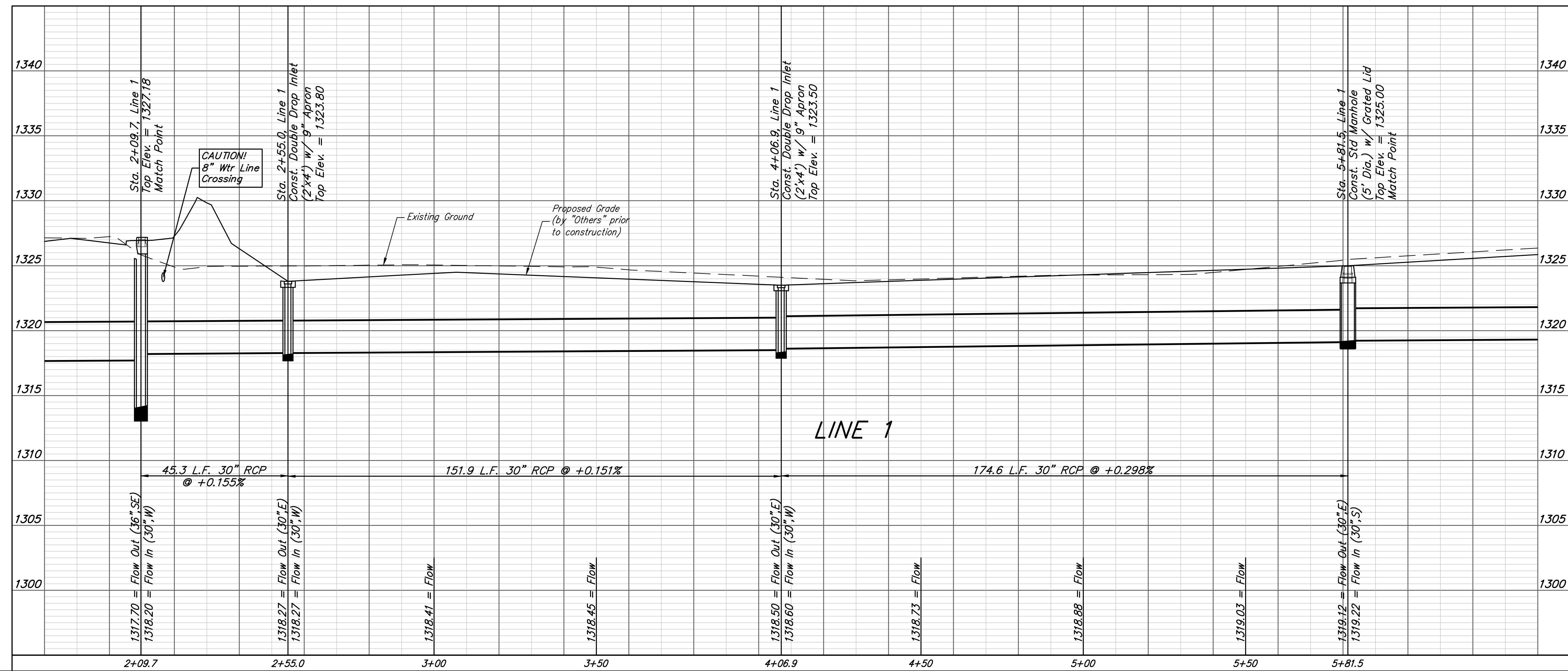
"□" cut in top of curb 1.5'
 north of the northeast corner of
 Lot 20, Block B, Sandcrest Addn.
 Elev. = 1327.21 NAVD88

"□" cut in top of east curb
 inlet at the southeast corner of
 the southern intersection of Curtis
 & Sandcrest.
 Elev. = 1322.05 NAVD88



David & Susan Carp
 2728 N Hoover
 Wichita, KS 67205-1031

David & Susan Carp
 2728 N Hoover
 Wichita, KS 67205-1031



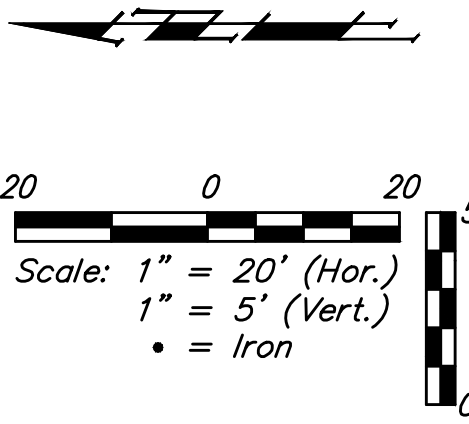
	Sandcrest 3rd Addition	
	LINE 1	
Storm Water Sewer Improvements		
<small>Baughman Company, P.A. 315 Ellis St. Wichita, KS 67211 P 316-262-7271 F 316-262-0149 ENGINEERING SURVEYING PLANNING LANDSCAPE ARCHITECTURE</small>		
PROJECT NUMBER 472-85423	DESIGN AEG	DRAWN JAK
REVISIONS:	APPROVED	DATE 1/15/18
SCALE Noted		SHEET 20 OF 50

I:\Projects\Sandcrest 3rd Addition_1706P290\Engineering\Phase 1\Str 16-11-E584\SWS PLANS.dwg

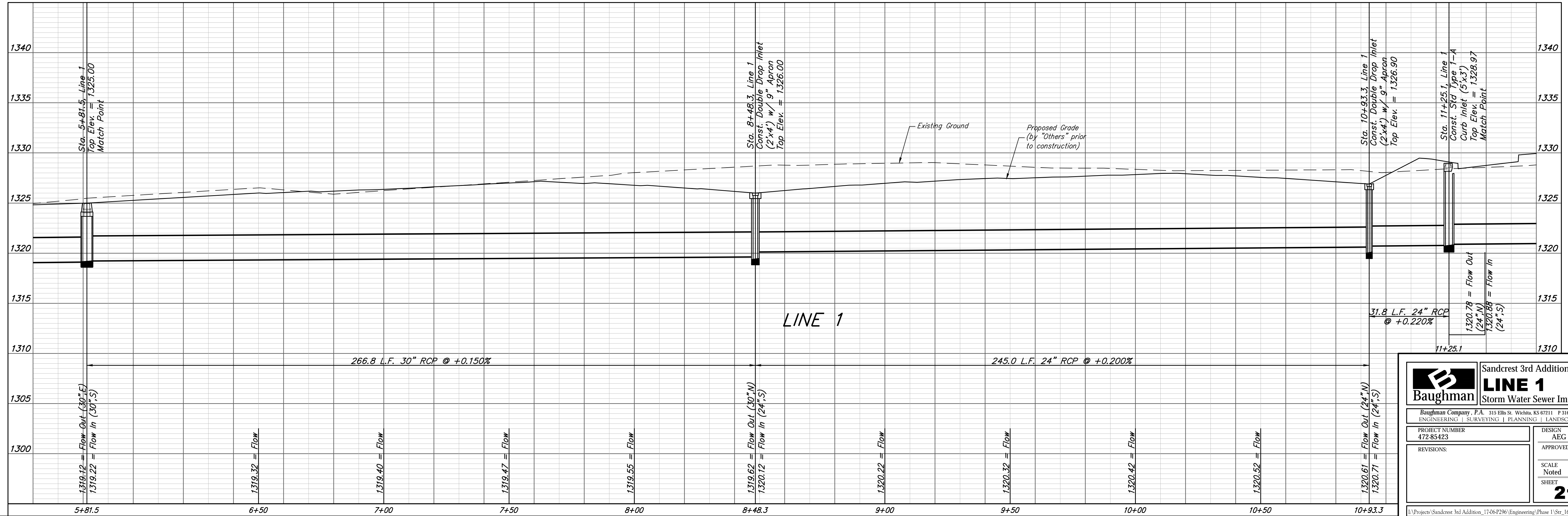
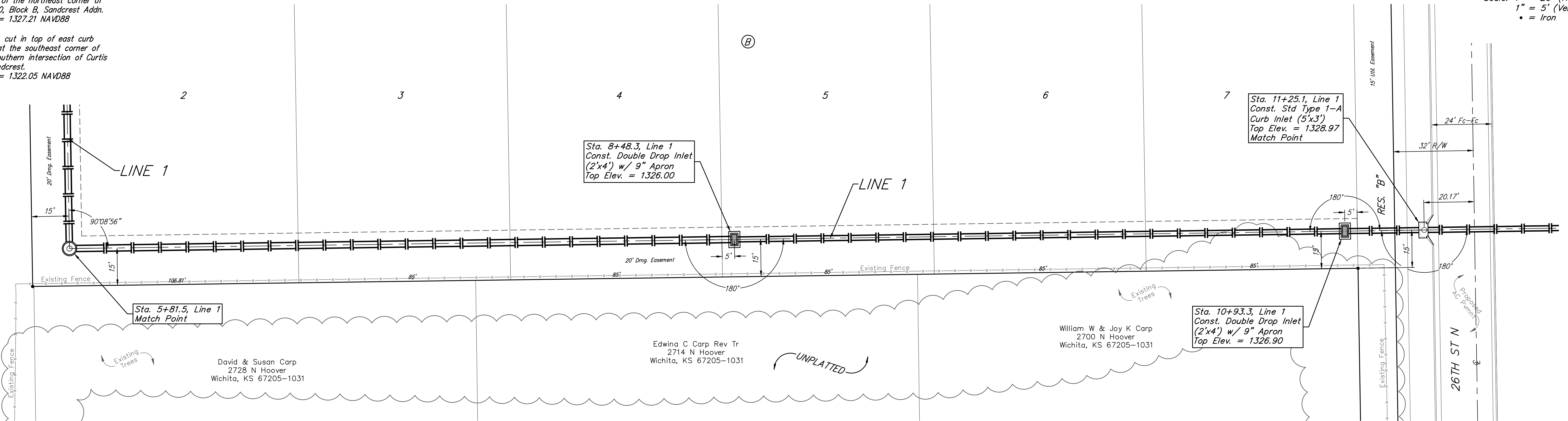
BENCHMARKS:
 City of Wichita Benchmark Disk
 34.9' S. & 31.2' W. of the SW Cor.,
 NW1/4, Sec. 2, Twp. 27-S, R-1-W.
 Elev. = 1327.57 NAVD88

"□" cut in top of curb 1.5'
 north of the northeast corner of
 Lot 20, Block B, Sandcrest Addn.
 Elev. = 1327.21 NAVD88

"□" cut in top of east curb
 inlet at the southeast corner of
 the southern intersection of Curtis
 & Sandcrest.
 Elev. = 1322.05 NAVD88



SANDCREST 3RD ADDITION



		Sandcrest 3rd Addition	
		LINE 1	
Storm Water Sewer Improvements		Baughman Company, P.A. 315 Ellis St. Wichita, KS 67211 P 316-262-7271 F 316-262-0149 ENGINEERING SURVEYING PLANNING LANDSCAPE ARCHITECTURE	
PROJECT NUMBER 472-85423	DESIGN AEG	DRAWN JAK	DATE 1/15/18
REVISIONS:	APPROVED	SCALE Noted	SHEET
		21 OF 50	

I:\Projects\Sandcrest 3rd Addition_1706P290\Engineering\Phase 1\Str 16-11-E584\SWS PLANS.dwg

BENCHMARKS:
 City of Wichita Benchmark Disk
 34.9' S. & 31.2' W. of the SW Cor.,
 NW1/4, Sec. 2, Twp. 27-S, R-1-W.
 Elev. = 1327.57 NAVD88

"□" cut in top of curb 1.5'
 north of the northeast corner of
 Lot 20, Block B, Sandcrest Addn.
 Elev. = 1327.21 NAVD88

"□" cut in top of east curb
 inlet at the southeast corner of
 the southern intersection of Curtis
 & Sandcrest.
 Elev. = 1322.05 NAVD88

SANDCREST 3RD ADDITION

Sta. 11+25.1, Line 1
 Match Point

LINE 1

RES. "B"

26TH ST N

RES. "C"

RES. "D"

William W & Joy K Carp
 2700 N Hoover
 Wichita, KS 67205-1031

UNPLATTED

Existing Trees

Sta. 11+45.1 to Sta. 11+75.3
 Install 30.2 L.F. Sand Backfill
 as per City Specifications.

Sta. 12+09.3 to Sta. 12+35.9
 Install 26.6 L.F. Sand Backfill
 as per City Specifications.

Sta. 12+15.9, Line 1
 Const. Std Type 1-A
 Curb Inlet (5'x4')
 Top Elev. = 1329.00

CAUTION!
 8" Water Line
 Crossing

Sta. 13+79.3, Line 1
 Const. Std Manhole
 (5' Dia.) w/ Grated Lid
 Top Elev. = 1326.00

LINE 1

CAUTION!
 6" Water Line
 Crossing

Sta. 15+29.0, Line 1
 Const. Std Type 1-A
 Curb Inlet (5'x3')
 Top Elev. = 1329.27

Sta. 15+49.0 to Sta. 15+85.8
 Install 36.8 L.F. Sand Backfill
 as per City Specifications.

Sta. 15+65.8, Line 1
 Const. Std Type 1-A
 Curb Inlet (5'x3')
 Top Elev. = 1329.27

CAUTION!
 8" San. Sewer
 Crossing

Remove Existing Trees Only
 as Necessary for Construction.
 Cost to be Included in Bid Item
 "Site Clearing"

Sta. 16+99.6, End Line 1
 Const. Backyard Inlet
 Top Elev. = 1329.10

UNPLATTED

Existing Trees

26TH CT N

UNPLATTED

Scale: 1" = 20' (Hor.)
 1" = 5' (Vert.)
 • = Iron

20' 0' 20' 5'

20' 0' 20' 5'

20' 0' 20' 5'

20' 0' 20' 5'

20' 0' 20' 5'

20' 0' 20' 5'

20' 0' 20' 5'

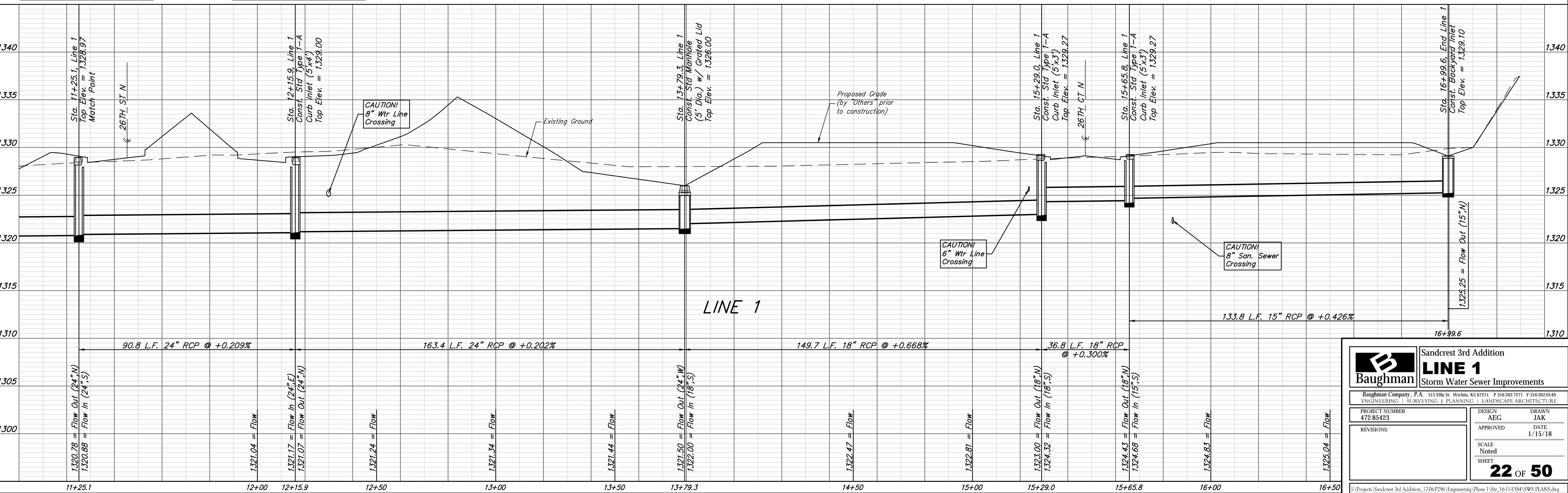
20' 0' 20' 5'

20' 0' 20' 5'

20' 0' 20' 5'

20' 0' 20' 5'

20' 0' 20' 5'

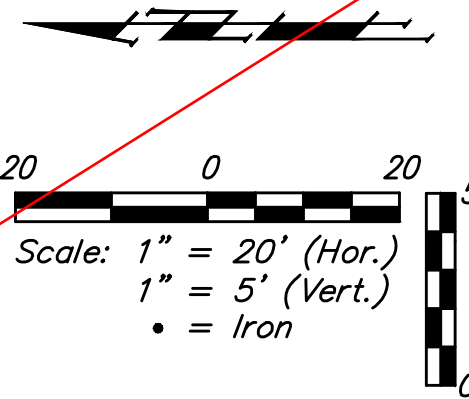


		Sandcrest 3rd Addition	
		LINE 1	
Storm Water Sewer Improvements		Baughman Company, P.A. 315 Ellis St. Wichita, KS 67211 P 316-262-7271 F 316-262-0149 ENGINEERING SURVEYING PLANNING LANDSCAPE ARCHITECTURE	
PROJECT NUMBER 472-85423	DESIGN AEG	DRAWN JAK	DATE 1/15/18
REVISIONS:	APPROVED	SCALE Noted	SHEET 22 OF 50

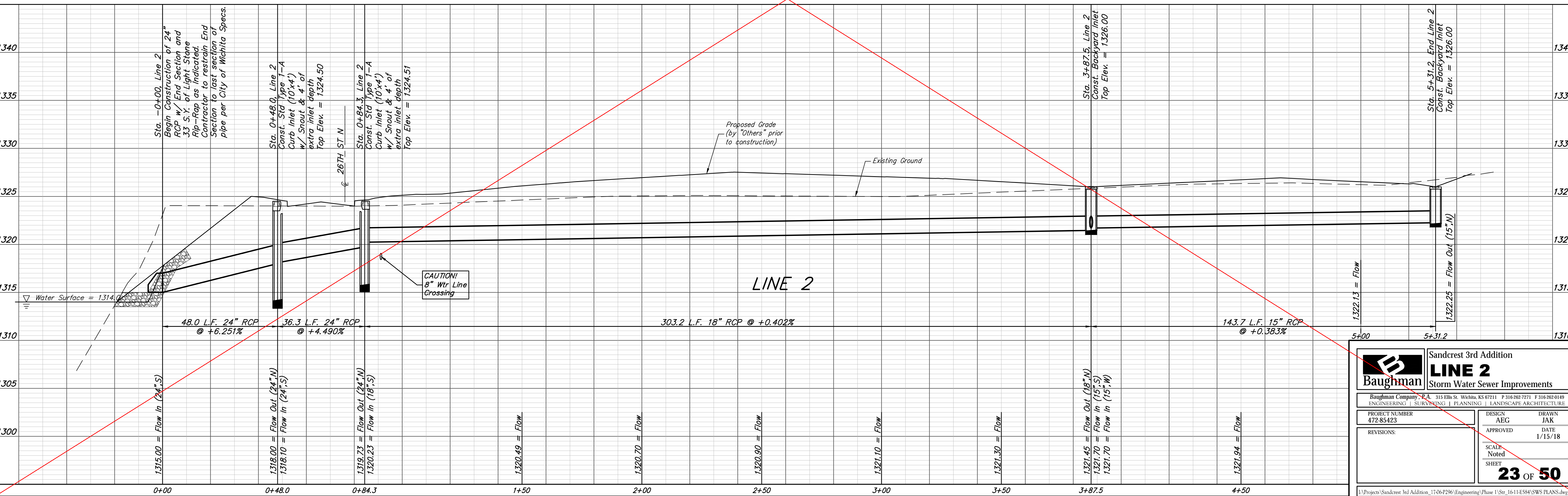
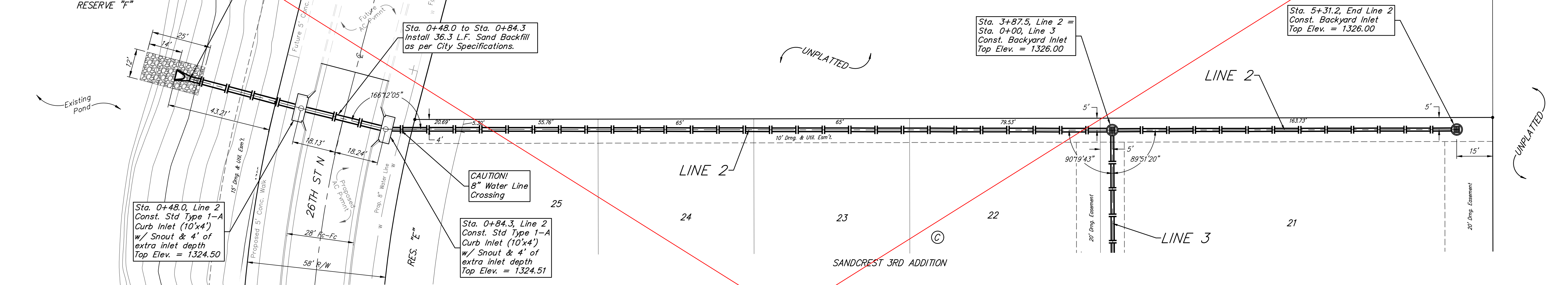
BENCHMARKS:
 City of Wichita Benchmark Disk
 34.9' S. & 31.2' W. of the SW Cor.,
 NW1/4, Sec. 2, Twp. 27-S, R-1-W.
 Elev. = 1327.57 NAVD88

"□" cut in top of curb 1.5'
 north of the northeast corner of
 Lot 20, Block B, Sandcrest Addn.
 Elev. = 1327.21 NAVD88

"□" cut in top of east curb
 inlet at the southeast corner of
 the southern intersection of Curtis
 & Sandcrest.
 Elev. = 1327.05 NAVD88



SEE REVISED SHEET



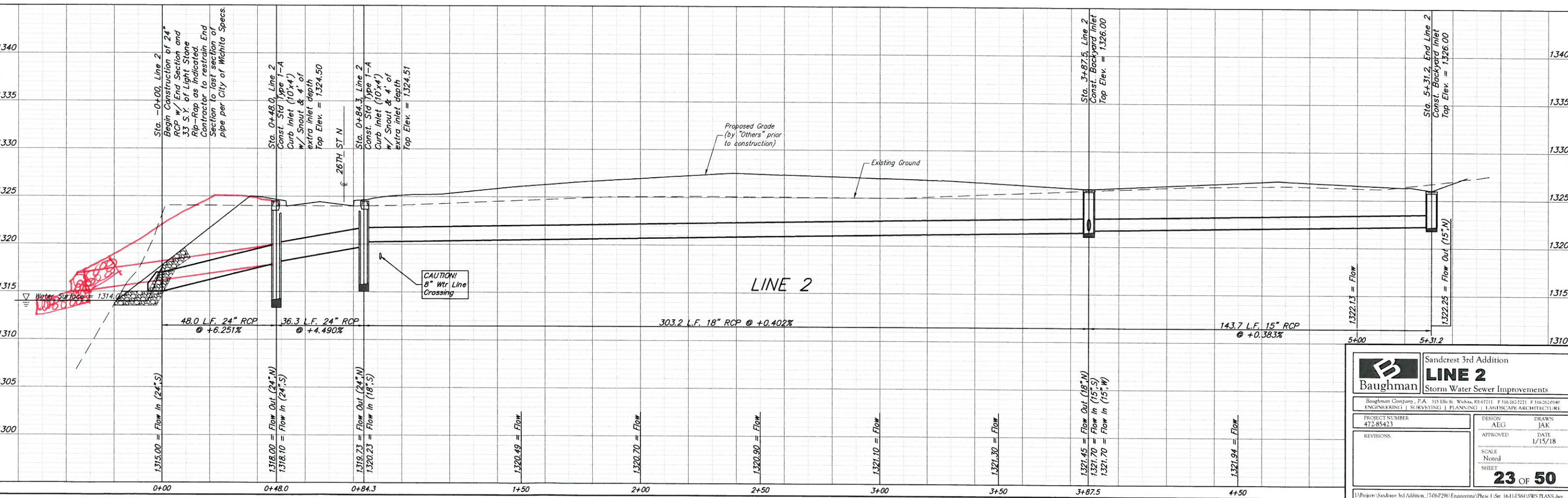
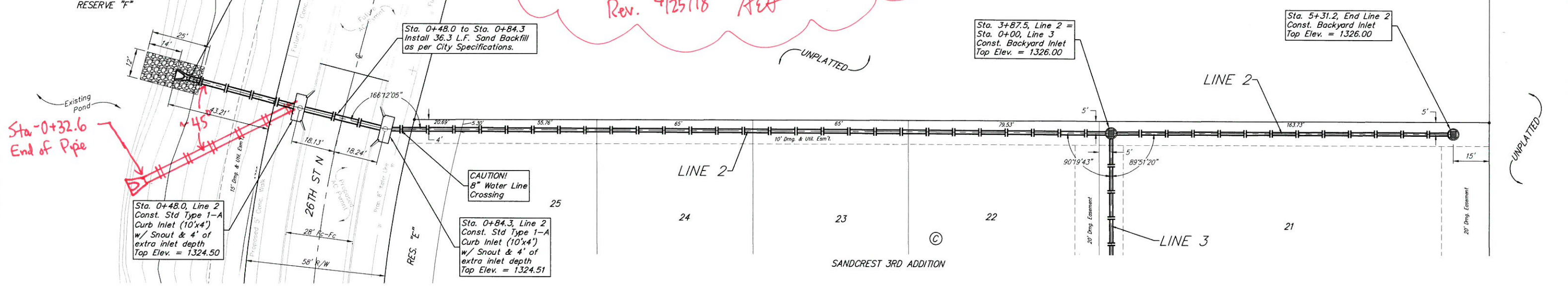
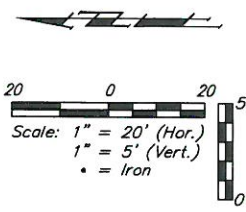
		Sandcrest 3rd Addition	
		LINE 2	
Storm Water Sewer Improvements		Baughman Company, P.A. 315 Ellis St. Wichita, KS 67211 P 316-262-7271 F 316-262-0149 ENGINEERING SURVEYING PLANNING LANDSCAPE ARCHITECTURE	
PROJECT NUMBER 472-85423	DESIGN AEG	DRAWN JAK	DATE 1/15/18
REVISIONS:	APPROVED	SCALE Noted	SHEET 23 OF 50

BENCHMARKS:
 City of Wichita Benchmark Disk
 34.9' S. & 31.2' W. of the SW Cor.,
 NW1/4, Sec. 2, Twp. 27-S, R-1-W.
 Elev. = 1327.57 NAVD88

"□" cut in top of curb 1.5'
 north of the northeast corner of
 Lot 20, Block B, Sandcrest Addn.
 Elev. = 1327.21 NAVD88

"□" cut in top of east curb
 inlet at the southeast corner of
 the southern intersection of Curtis
 & Sandcrest.
 Elev. = 1327.05 NAVD88

SWS Pipe rotated and lengthened due to developer request. Plan location would conflict with proposed improvements in Reserve "F". Larger Snout needed for angled pipe connection to rear of curb inlet.
 Rev. 4/25/18 AEA



Baughman Sandcrest 3rd Addition
LINE 2
 Storm Water Sewer Improvements

Baughman Company, P.A. 315 Ellis St. Wichita, KS 67211 P 316-262-7271 F 316-262-0140
 ENGINEERING | SURVEYING | PLANNING | LANDSCAPE ARCHITECTURE

PROJECT NUMBER 472-85423	DESIGN AEG	DRAWN JAK
REVISIONS	APPROVED	DATE 1/15/18
SCALE Noted		SHEET 23 OF 50

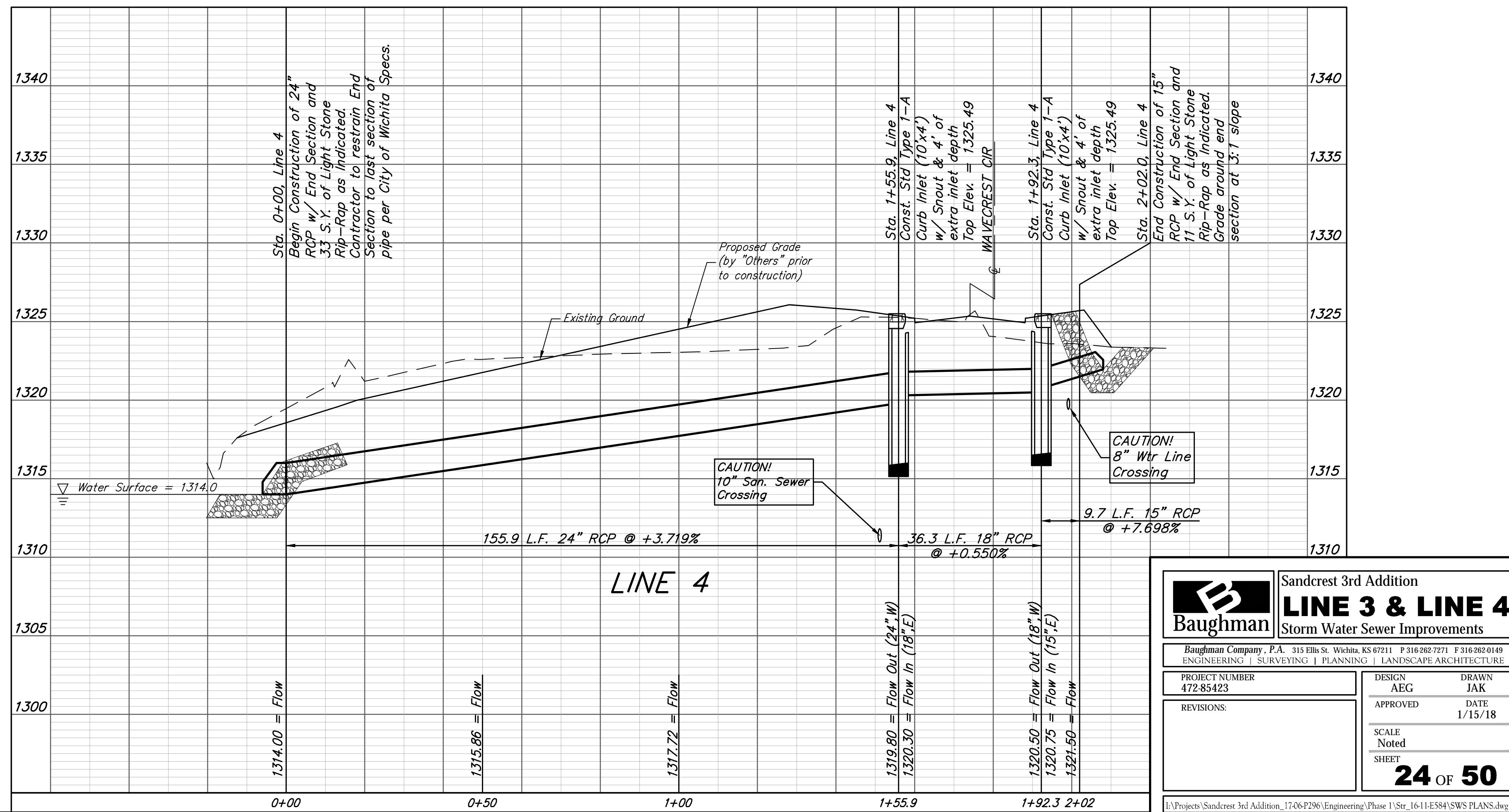
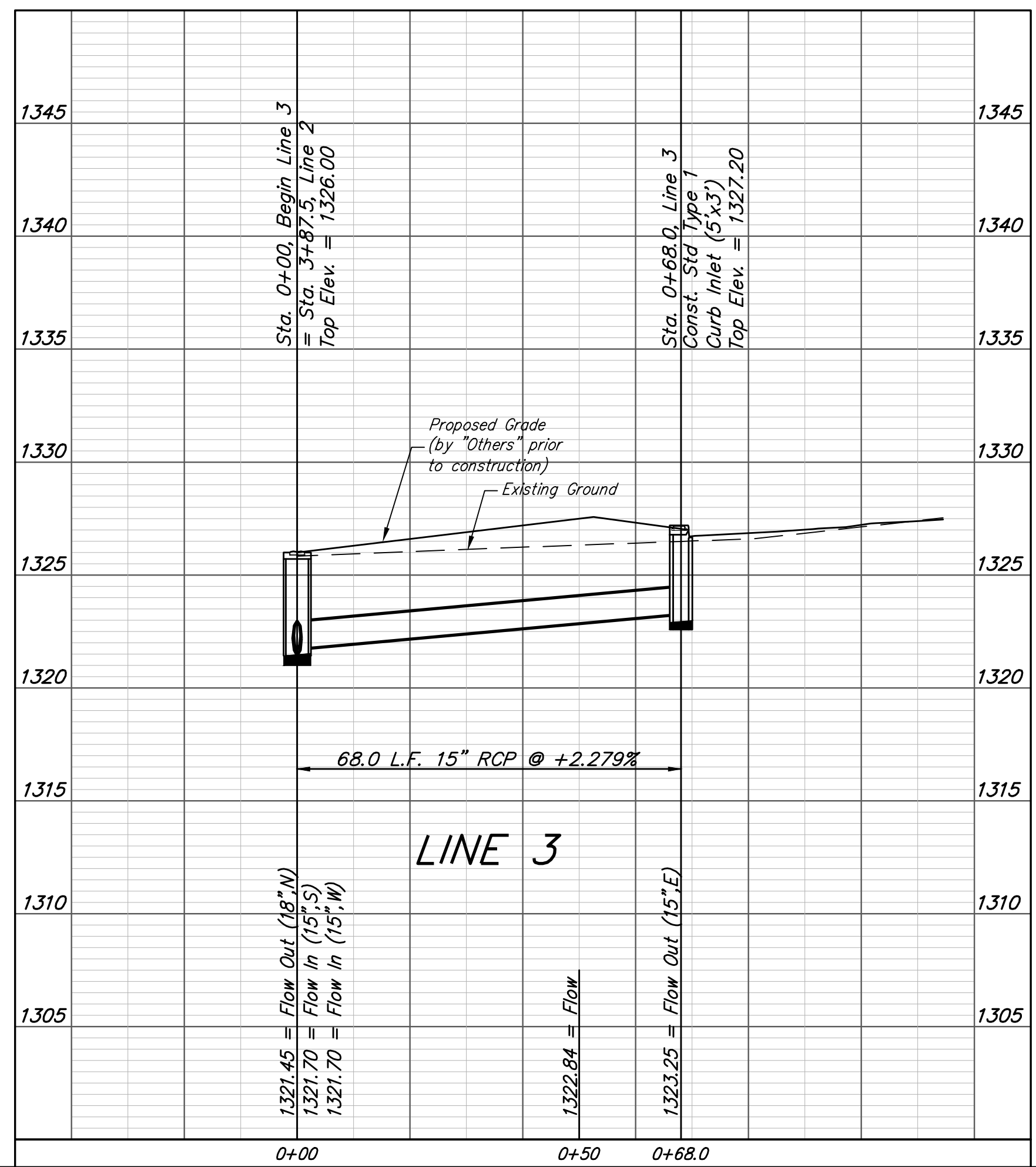
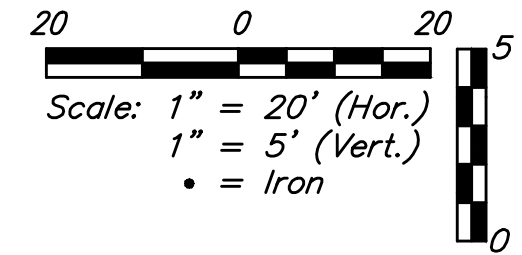
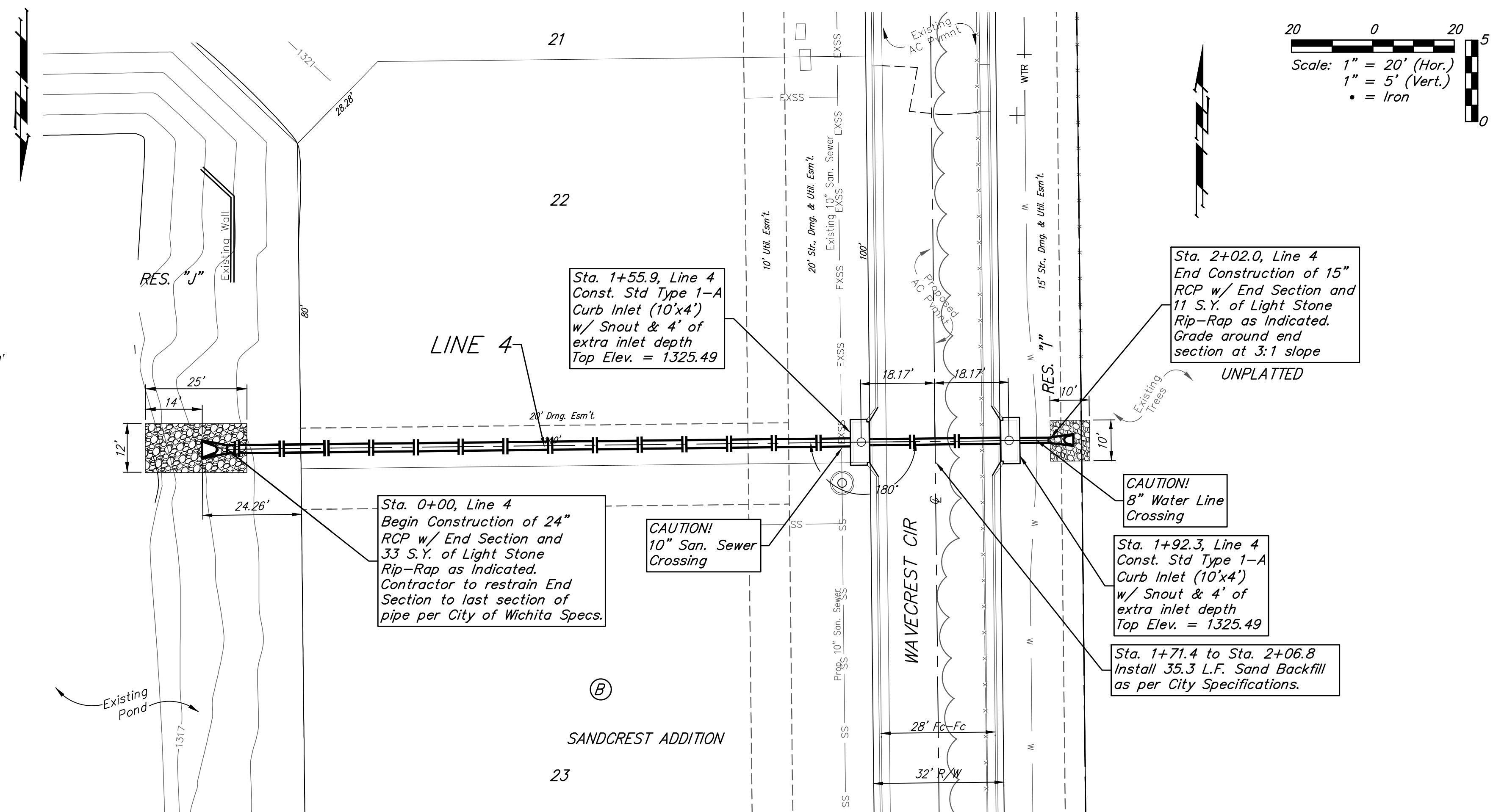
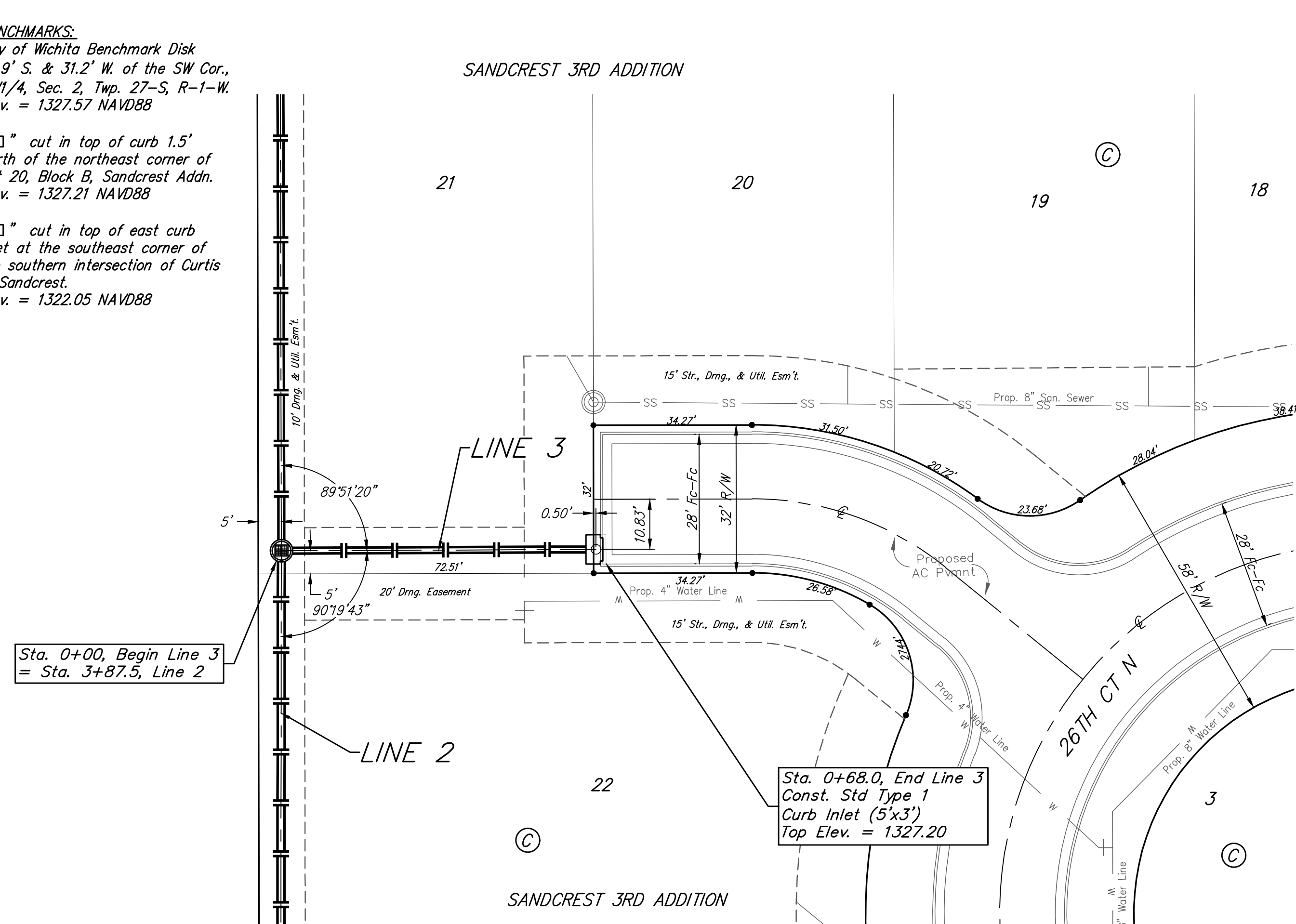
Project: Sandcrest 3rd Addition, 1706-F206-Engineering/Phase 1/Str. 1641-E584/SWS PLANS.dwg

BENCHMARKS:
 City of Wichita Benchmark Disk
 34.9' S. & 31.2' W. of the SW Cor.,
 NW1/4, Sec. 2, Twp. 27-S, R-1-W.
 Elev. = 1327.57 NAVD88

"□" cut in top of curb 1.5'
 north of the northeast corner of
 Lot 20, Block B, Sandcrest Addn.
 Elev. = 1327.21 NAVD88

"□" cut in top of east curb
 inlet at the southeast corner of
 the southern intersection of Curtis
 & Sandcrest.
 Elev. = 1322.05 NAVD88

SANDCREST 3RD ADDITION



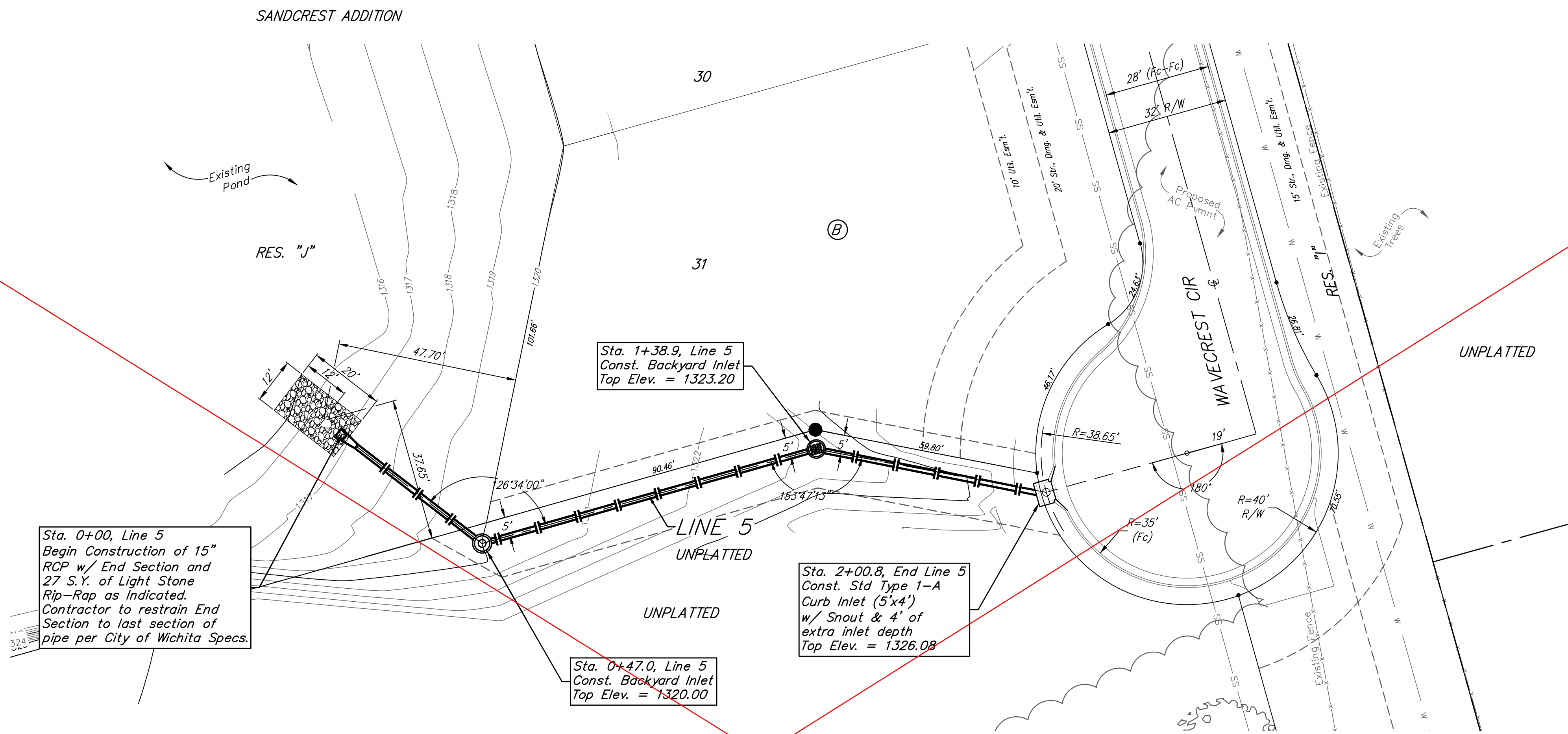
		Sandcrest 3rd Addition	
		LINE 3 & LINE 4	
Storm Water Sewer Improvements		Baughman Company, P.A. 315 Ellis St. Wichita, KS 67211 P 316-262-7271 F 316-262-0149 ENGINEERING SURVEYING PLANNING LANDSCAPE ARCHITECTURE	
PROJECT NUMBER 472-85423	DESIGN AEG	DRAWN JAK	APPROVED DATE 1/15/18
REVISIONS:	SCALE Noted		
			24 OF 50

I:\Projects\Sandcrest 3rd Addition_1706P290\Engineering\Phase 1\Str 16-11-E584\SW Plans.dwg

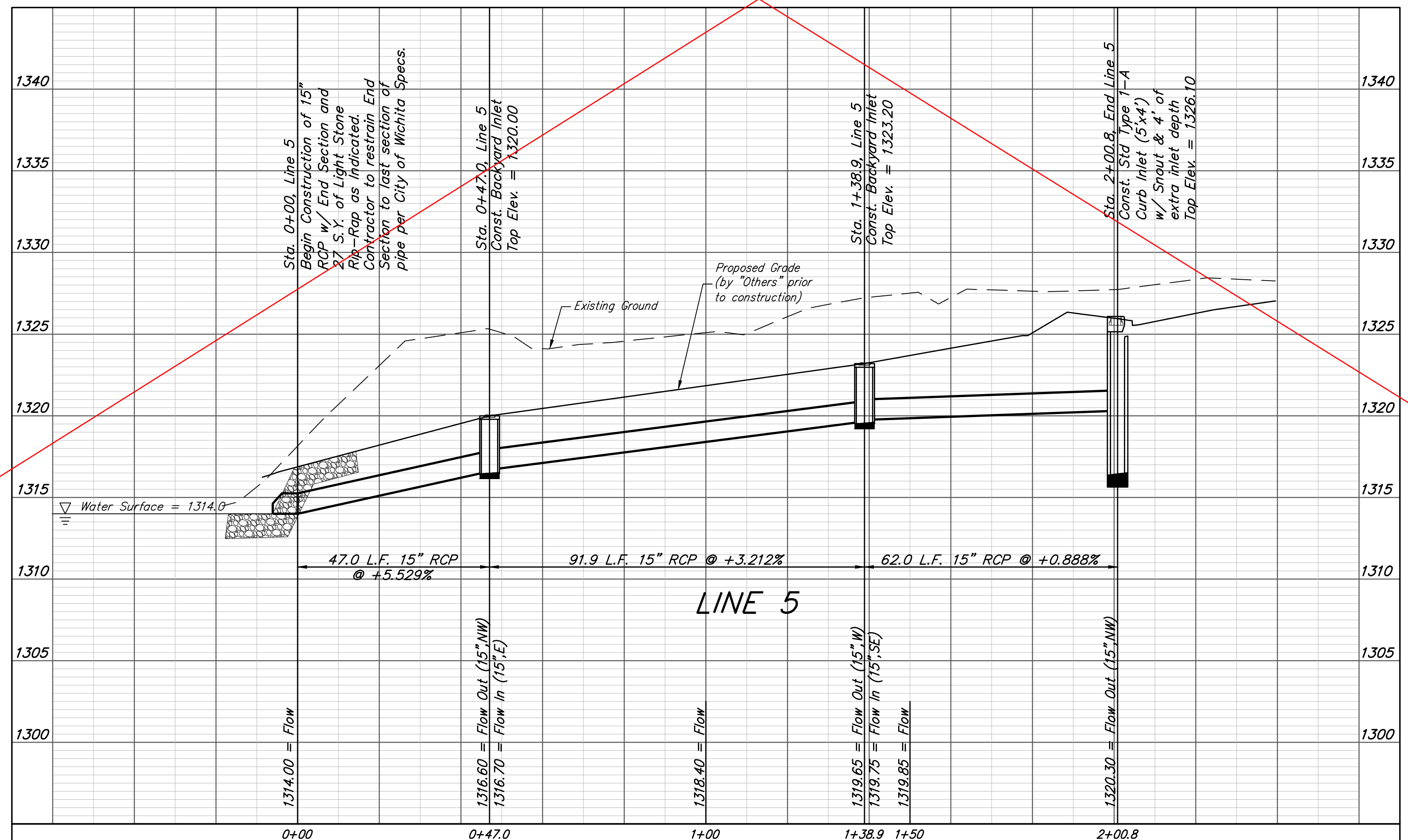
BENCHMARKS:
 City of Wichita Benchmark Disk
 34.9' S. & 31.2' W. of the SW Cor.,
 NW1/4, Sec. 2, Twp. 27-S, R-1-W.
 Elev. = 1327.57 NAVD88

"□" cut in top of curb 1.5'
 north of the northeast corner of
 Lot 20, Block B, Sandcrest Addn.
 Elev. = 1327.21 NAVD88

"□" cut in top of east curb
 inlet at the southeast corner of
 the southern intersection of Curtis
 & Sandcrest.
 Elev. = 1322.05 NAVD88



SEE REVISED SHEET



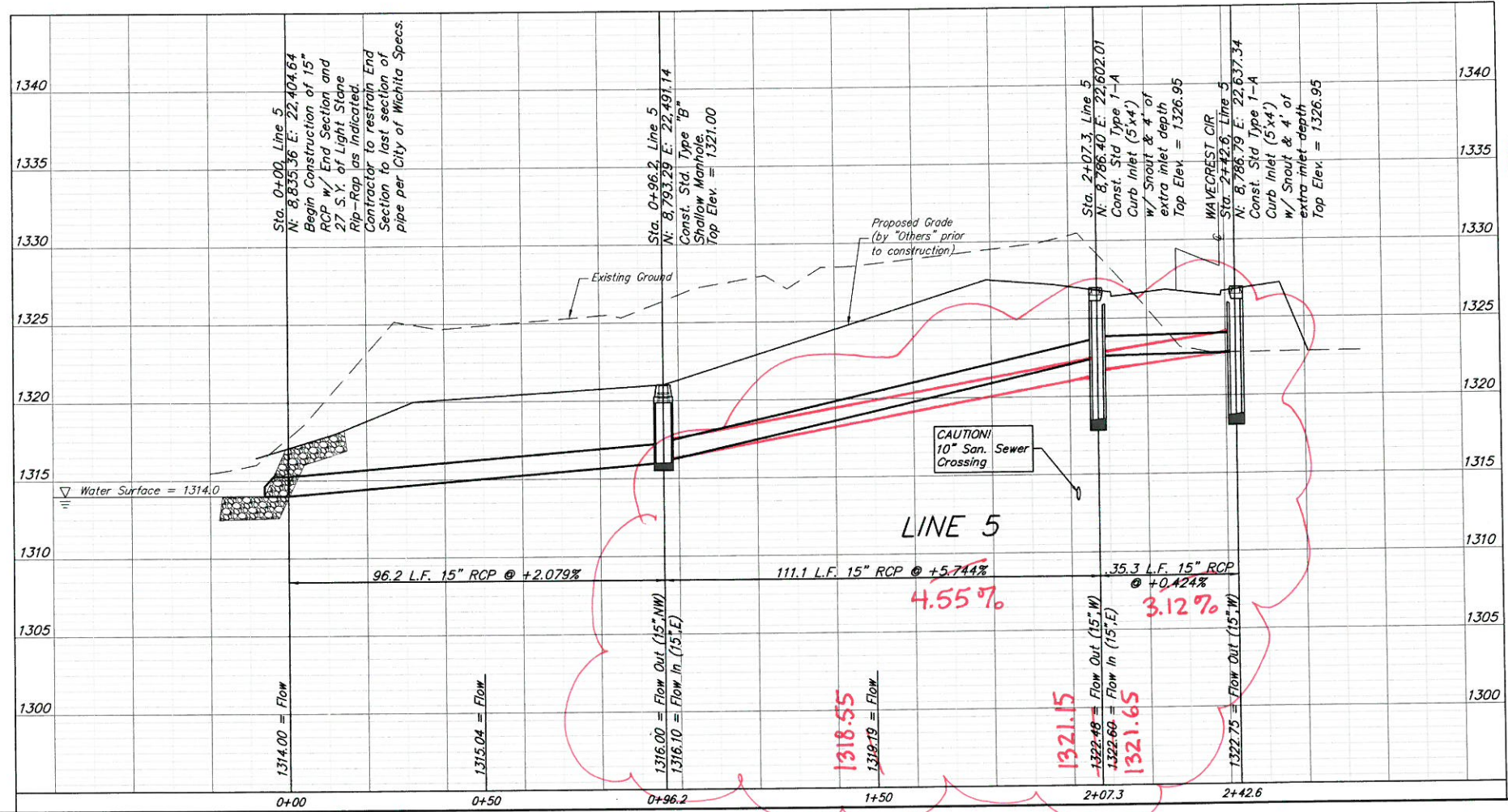
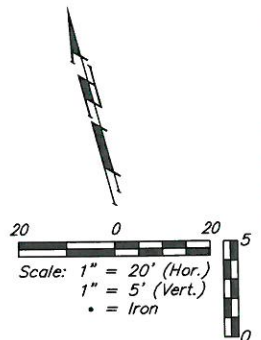
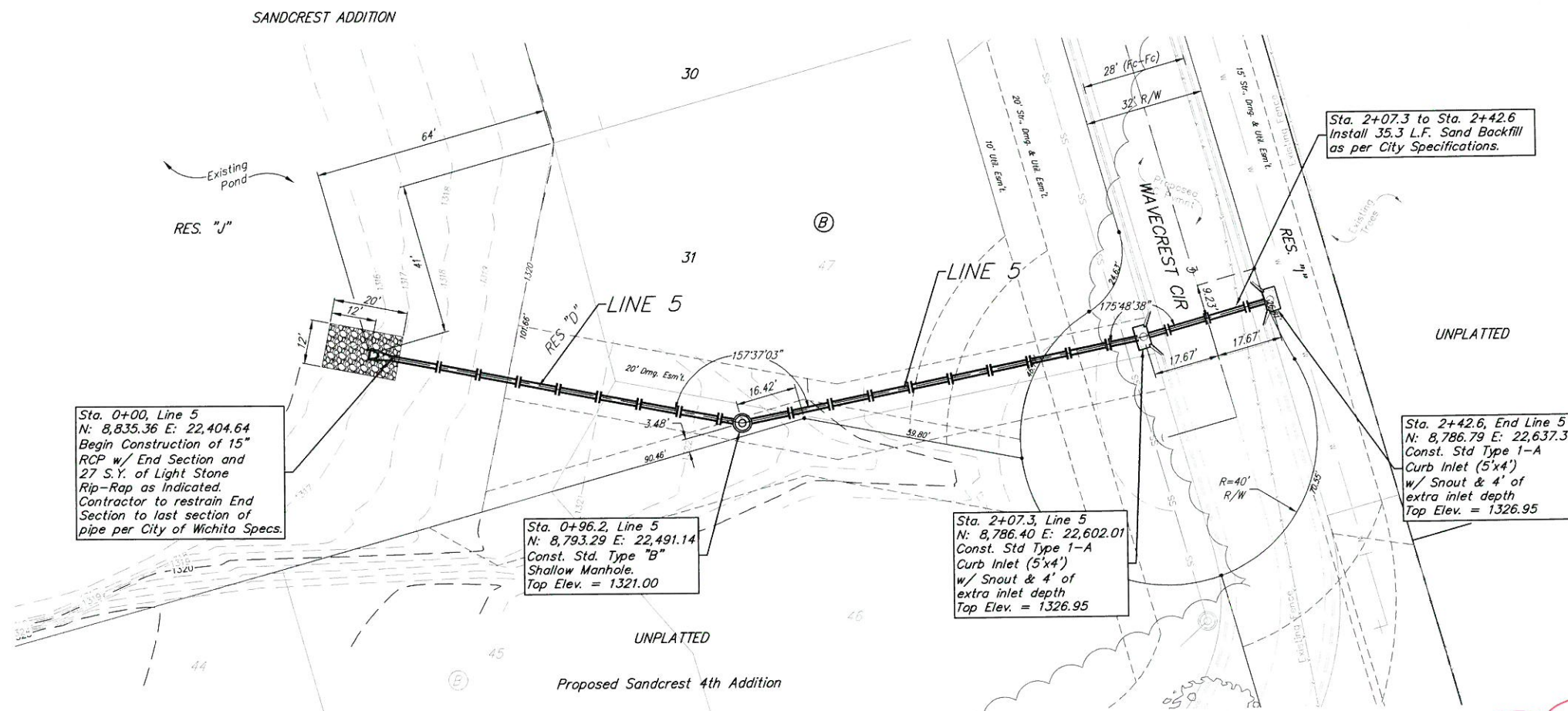
		Sandcrest 3rd Addition	
		LINE 5	
		Storm Water Sewer Improvements	
<small>Baughman Company, P.A. 315 Ellis St. Wichita, KS 67211 P 316-262-7271 F 316-262-0149 ENGINEERING SURVEYING PLANNING LANDSCAPE ARCHITECTURE</small>			
PROJECT NUMBER 472-85423	DESIGN AEG	DRAWN JAK	
REVISIONS:	APPROVED	DATE 1/15/18	
	SCALE Noted	SHEET	
			25 OF 50

I:\Projects\Sandcrest 3rd Addition_1706P290\Engineering\Phase 1\Str 16-11-E584\SWS PLANS.dwg

BENCHMARKS:
 City of Wichita Benchmark Disk
 34.9' S. & 31.2' W. of the SW Cor.,
 NW1/4, Sec. 2, Twp. 27-S, R-1-W.
 Elev. = 1327.57 NAVD88

* □ cut in top of curb 1.5'
 north of the northeast corner of
 Lot 20, Block B, Sandcrest Addn.
 Elev. = 1327.21 NAVD88

* □ cut in top of east curb
 inlet at the southeast corner of
 the southern intersection of Curtis
 & Sandcrest.
 Elev. = 1322.05 NAVD88



Pipe Flows and Slopes revised
 to match existing opening in
 backside of curb inlet.
 4/26/18 AEG

	Sandcrest 3rd Addition	
	LINE 5	
Storm Water Sewer Improvements		
<small>Baughman Company, P.A. 315 Ellis St. Wichita, KS 67211 P 316-262-2121 F 316-262-0149 ENGINEERING SURVEYING PLANNING LANDSCAPE ARCHITECTURE</small>		
PROJECT NUMBER 472-85423	DESIGN AEG	DRAWN JAK
REVISIONS 4/04/18 Sandcrest 4th Addition Revision	APPROVED JAK	DATE 1/15/18
SCALE Noted		
SHEET 25R OF 50		

C:\Project\Sandcrest 3rd Addition_1726-P226\Engineering\Phase 1 Set_1611-ESW\SW PLANS.dwg