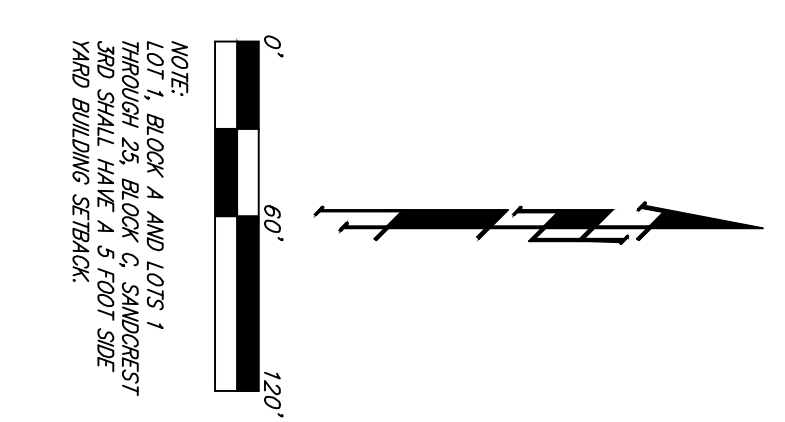
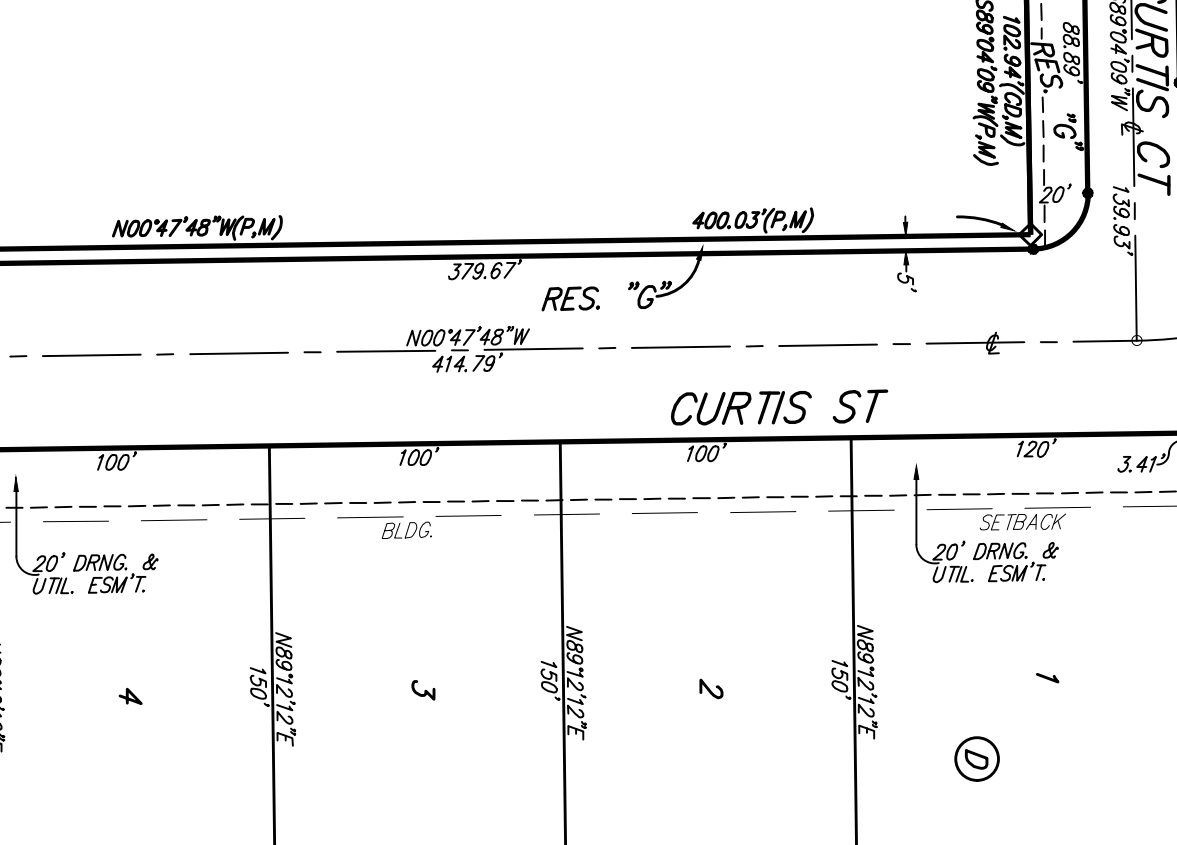
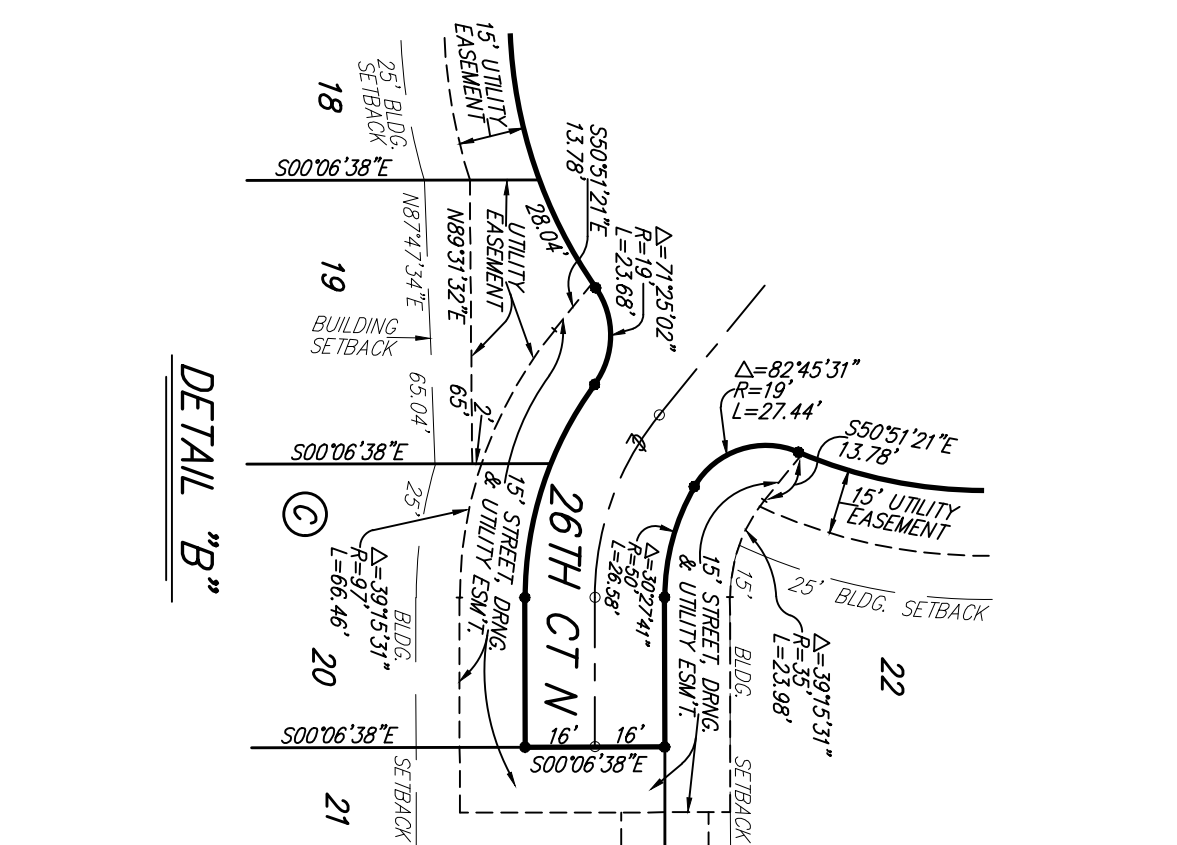
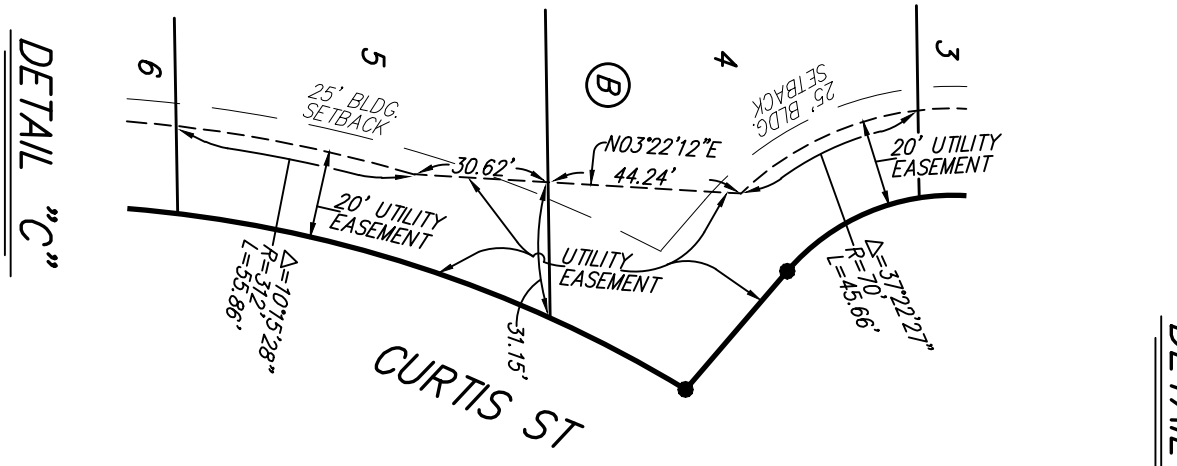
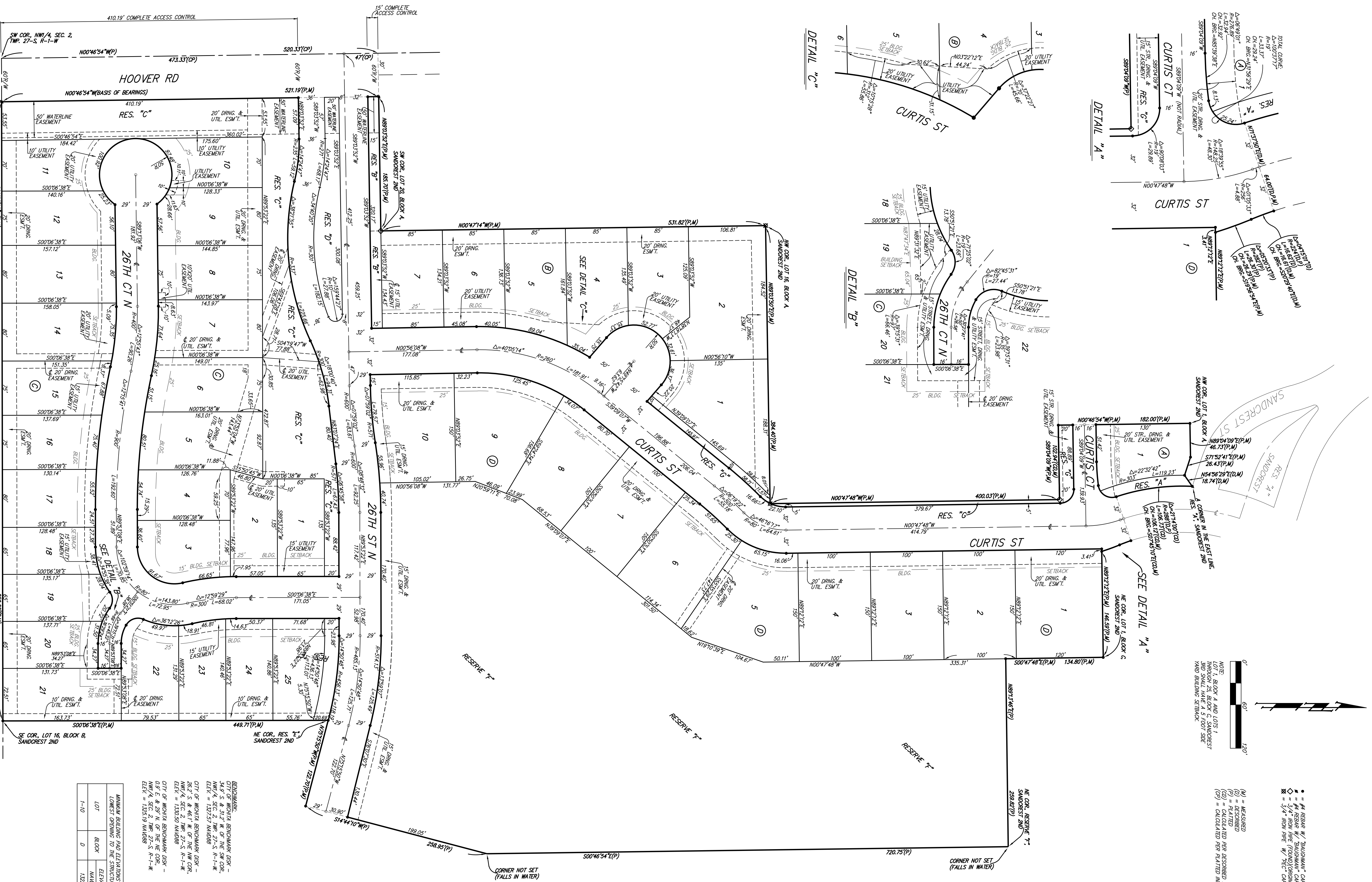


# SANDCREST 3RD AN ADDITION TO WICHITA, SEDGWICK COUNTY, KANSAS



- • = #4 REBAR W/ BAUCHMAN CAR (SET)
- = #4 REBAR W/ BAUCHMAN CAR (FOUND)
- = 3/4" RON PIPE (FOUND) (CONC UNKNOWN)
- = 3/4" RON PIPE W/ REC CAR (FOUND)
- (M) = MEASURED
- (D) = DERIVED
- (R) = RAIATED
- (C) = CALCULATED PER DESCRIBED MFR.
- (S) = CALCULATED PER PLATTED MFR.

**MINIMUM BUILDING PAID ELEVATIONS FOR LOWEST ORIGIN TO THE STRUCTURES**

LOT	BLOCK	ELEVATION
1-10	D	1220.0

**REMARKS:**  
 CITY OF WICHITA BENCHMARK DISK -  
 NW/4 SEC. 2, TWP. 27-S, R-1-W  
 ELEV. = 1302.57 MVD088  
 CITY OF WICHITA BENCHMARK DISK -  
 SW/4 SEC. 2, TWP. 27-S, R-1-W  
 ELEV. = 1300.50 MVD088  
 CITY OF WICHITA BENCHMARK DISK -  
 SE COR. RES. T, SANDCREST 2ND  
 ELEV. = 1325.19 MVD088

**CITY ENGINEER'S NOTE:**  
 The property is within a zone identified by the City Engineer's office as ground surface elevation. Building with specially engineered foundations or with the lowest floor opening above ground level is recommended and owners seeking building permits on this property will be similarly advised in the City Engineer's office.

**NOTE:**  
 A drainage plan has been developed for the plot and all drainage easements, rights-of-way, or reserves shall remain of established depth and shall be maintained to allow for the drainage of stormwater.

**Page 2 of 2**  
**Bauchman Company P.A.**  
 313 BIRDS, WICHITA, KS 67201 P: 313-262-7271 F: 313-262-0118  
 SEDGWICK COUNTY, KANSAS 1 LANDMARK CENTER/TOWER