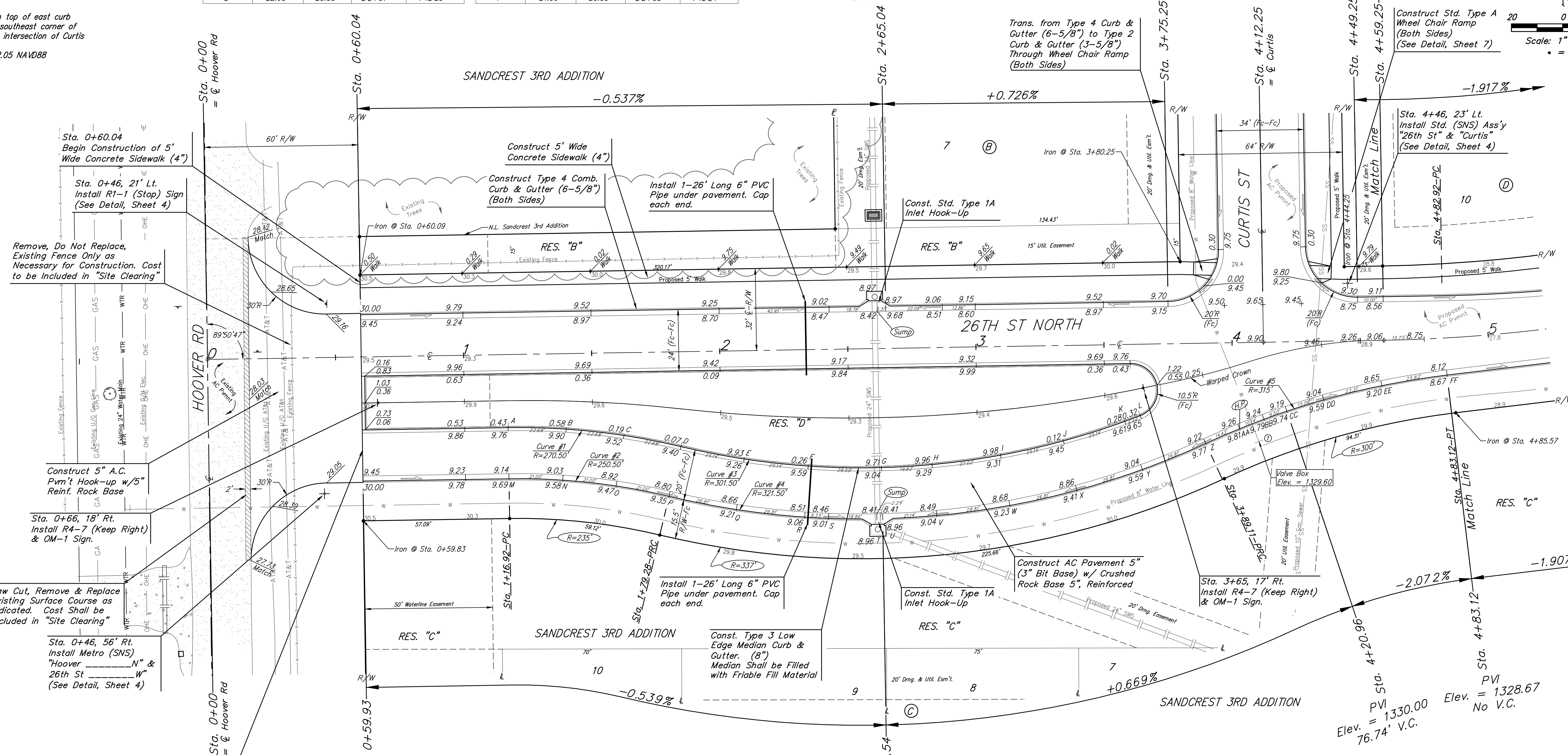
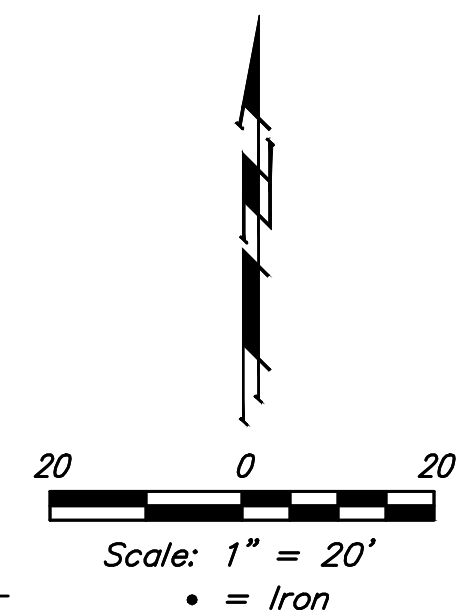


**BENCHMARKS:**  
 City of Wichita Benchmark Disk  
 34.9' S. & 31.2' W. of the SW Cor.,  
 NW1/4, Sec. 2, Twp. 27-S, R-1-W.  
 Elev. = 1327.57 NAVD88

"□" cut in top of curb 1.5'  
 north of the northeast corner of  
 Lot 20, Block B, Sandcrest Addn.  
 Elev. = 1327.21 NAVD88

"□" cut in top of east curb  
 inlet at the southeast corner of  
 the southern intersection of Curtis  
 & Sandcrest.  
 Elev. = 1322.05 NAVD88

Curve #1					Curve #2				
Curve Data Based on Face of Curb					Curve Data Based on Face of Curb				
Rad. = 270.5' Delta = 142°47' Tangent = 34.20'					Rad. = 250.5' Delta = 142°47' Tangent = 31.67'				
Arc = 68.04' L.C. = 67.87' Def./Ft. = 6.35496 Min.					Arc = 63.00' L.C. = 62.85' Def./Ft. = 6.86336 Min.				
Station	Arc	Chord 8' Lt.	Defl.	Total Defl.	Station	Arc	Chord 8' Rt.	Defl.	Total Defl.
A	-	-	0'00"00"	0'00"00"	M	-	-	0'00"00"	0'00"00"
B	22.68'	23.35'	2'24"08"	2'24"08"	N	21.00'	20.33'	2'24"08"	2'24"08"
C	22.68'	23.35'	2'24"08"	4'48"16"	O	21.00'	20.33'	2'24"08"	4'48"16"
D	22.68'	23.35'	2'24"07"	7'12"23"	P	21.00'	20.33'	2'24"08"	7'12"24"



Sta. 0+60.04  
 Begin Construction of 5'  
 Wide Concrete Sidewalk (4")

Sta. 0+46, 21' Lt.  
 Install R1-1 (Stop) Sign  
 (See Detail, Sheet 4)

Remove, Do Not Replace,  
 Existing Fence Only as  
 Necessary for Construction. Cost  
 to be Included in "Site Clearing"

Construct 5" A.C.  
 Pvm't Hook-up w/5"  
 Reinf. Rock Base

Sta. 0+66, 18' Rt.  
 Install R4-7 (Keep Right)  
 & OM-1 Sign.

Saw Cut, Remove & Replace  
 Existing Surface Course as  
 Indicated. Cost Shall be  
 Included in "Site Clearing"

Sta. 0+46, 56' Rt.  
 Install Metro (SNS)  
 "Hoover" "N" &  
 26th St "W"  
 (See Detail, Sheet 4)

Sta. 0+59.93  
 Begin Construct of AC  
 Pavement 5" (3" Bit  
 Base) w/ Crushed Rock  
 Base 5", Reinforced

Curve #3				
Curve Data Based on Face of Curb				
Rad. = 301.5' Delta = 34°40'20" Tangent = 94.12'				
Arc = 182.43' L.C. = 179.68' Def./Ft. = 5.70173 Min.				
Station	Arc	Chord 8' Lt.	Defl.	Total Defl.
D	-	-	0'00"00"	0'00"00"
E	25.14'	24.47'	2'23"20"	2'23"20"
F	25.14'	24.47'	2'23"21"	4'46"41"
G	28.59'	27.82'	2'43"01"	7'29'42"
H	19.82'	19.29'	1'53"00"	9'22'42"
I	27.02'	26.30'	2'34'04"	11'56'46"
J	25.14'	24.47'	2'23'20"	14'20'06"
K	25.14'	24.47'	2'23'21"	16'43'27"
L	6.44'	6.27'	0'36'43"	17'20'10"

Curve #4				
Curve Data Based on Face of Curb				
Rad. = 321.5' Delta = 38°13'36" Tangent = 111.41'				
Arc = 214.50' L.C. = 210.54' Def./Ft. = 5.34639 Min.				
Station	Arc	Chord 8' Rt.	Defl.	Total Defl.
P	-	-	0'00"00"	0'00"00"
Q	26.81'	27.47'	2'23'20"	2'23'20"
R	26.81'	27.47'	2'23'20"	4'46'40"
S	9.35'	9.58'	0'50'00"	5'36'40"
T	18.86'	19.33'	1'40'50"	7'17'30"
U	2.29'	2.35'	0'12'14"	7'29'44"
V	21.14'	21.66'	1'53'02"	9'22'46"
W	28.81'	29.52'	2'34'01"	11'56'47"
X	26.81'	27.47'	2'23'21"	14'20'08"
Y	26.81'	27.47'	2'23'20"	16'43'28"
Z	26.81'	27.47'	2'23'20"	19'06'48"

Curve #5				
Curve Data Based on Face of Curb				
Rad. = 315' Delta = 17°52'20" Tangent = 49.53'				
Arc = 98.25' L.C. = 97.86' Def./Ft. = 5.45717 Min.				
Station	Arc	Chord 8' Rt.	Defl.	Total Defl.
Z	-	-	0'00"00"	0'00"00"
AA	14.42'	14.05'	1'18'42"	1'18'42"
BB	10.14'	9.88'	0'55'20"	2'14'02"
CC	9.50'	9.26'	0'51'50"	3'05'52"
DD	15.06'	14.68'	1'22'11"	4'28'03"
EE	23.31'	22.71'	2'07'13"	6'35'16"
FF	25.82'	25.16'	2'20'54"	8'56'10"

PVI  
 Elev. = 1328.90  
 44.19' V.C.

PVI  
 Elev. = 1330.00  
 76.74' V.C.

	<b>Sandcrest 3rd Addition</b> <b>26TH STREET N</b> Sta. 0+59.93 to Sta. 4+83.12	
	Baughman Company, P.A. 315 Ellis St. Wichita, KS 67211 P 316-262-7271 F 316-262-0149 ENGINEERING   SURVEYING   PLANNING   LANDSCAPE ARCHITECTURE	
PROJECT NUMBER <b>472-85423</b>	DESIGN AEG	DRAWN JAK
REVISIONS:	APPROVED DATE 1/15/18	SCALE Noted
		<b>8 OF 50</b>

I:\Projects\Sandcrest 3rd Addition\_1706\F2906\Engineering\Phase 1\Str. 1611-5384\STR PLANS.dwg