

GENERAL NOTES

- THE CONTRACTOR SHALL COMPLY WITH ALL APPLICABLE SAFETY REGULATIONS. ALL CONSTRUCTION SHALL BE COMPLETED FOLLOWING CURRENT CITY STANDARD SPECIFICATIONS AND SPECIAL PROVISIONS.
- CONTRACTOR WILL BE REQUIRED TO PROVIDE NOTICE TO UTILITY COMPANIES A MINIMUM OF SEVENTY-TWO (72) HOURS PRIOR TO ANY EXCAVATION, AS FOLLOWS:
 KANSAS ONE-CALL 687-2470
 THE CONTRACTOR MUST NOTIFY THE FOLLOWING IN CASE OF AN EMERGENCY:
 AT&T 1-800-246-8464
 BLACK HILLS ENERGY (GAS) 1-800-694-8989
 CITY OF WICHITA WATER & SEWER 1-316-219-9321
 CITY OF WICHITA STORMWATER 1-316-268-4090
 CITY OF WICHITA TRAFFIC 1-316-268-4034
 COX COMMUNICATIONS 1-888-249-3530
 KANSAS GAS SERVICE 1-888-482-4950
 WESTAR ENERGY 1-800-544-4857
- UTILITY SERVICE LINES, POLES, ETC. ARE TO BE ADJUSTED AS NECESSARY BY OTHERS PRIOR TO CONSTRUCTION UNLESS THE PLANS SPECIFICALLY CALL FOR THEIR ADJUSTMENT BY ITS OWNER DURING CONSTRUCTION. EXISTING UTILITIES AND THEIR LOCATION, AS SHOWN ON THE PLAN, REPRESENT THE BEST INFORMATION OBTAINABLE FOR DESIGN. THE CONTRACTOR WILL BE REQUIRED TO WORK AROUND EXISTING UTILITIES WITHIN THE RIGHT-OF-WAY AND EASEMENTS WHICH DO NOT CONFLICT WITH PROPOSED CONSTRUCTION.
- RUBBLE FROM THE REMOVAL OF MISCELLANEOUS STRUCTURES AND EXCESS EXCAVATION WHICH IS TO BE WASTED SHALL BE DISPOSED OF ON SITES TO BE PROVIDED BY THE CONTRACTOR. THESE SITES SHALL BE APPROVED BY THE ENGINEER AS TO SUITABILITY, APPEARANCE AND SITE LOCATION. LOCATIONS, IN THE OPINION OF THE ENGINEER, THAT WILL LEAVE AN UNSIGHTLY APPEARANCE WILL NOT BE APPROVED. ALL DISPOSAL SITES MUST BE APPROVED BY THE KANSAS DEPARTMENT OF HEALTH AND ENVIRONMENT. MATERIAL EITHER STOCKPILED OR DISPOSED OF IN A FLOOD PLAIN WILL REQUIRE A KANSAS STATE BOARD OF AGRICULTURE PERMIT. ANY MATERIAL DUMPED IN WATERS OF THE UNITED STATES OR WETLANDS IS SUBJECT TO U.S. CORPS OF ENGINEERS PERMITTING REGULATIONS. ANY MATERIAL BURIED OR STOCKPILED BEYOND APPROVED CONSTRUCTION LIMITS WOULD REQUIRE ADDITIONAL ARCHAEOLOGICAL INVESTIGATIONS UNLESS BURIED IN A PREVIOUSLY APPROVED BORROW LOCATION.
- TREES AND SHRUBS IN PUBLIC RIGHT-OF-WAY WHICH ARE IN DIRECT CONFLICT WITH PROPOSED NEW CONSTRUCTION SHALL BE REMOVED BY THE CONTRACTOR WITH THE ENGINEER'S APPROVAL. TREES AND SHRUBS WHICH ARE NOT IN DIRECT CONFLICT WITH PROPOSED NEW CONSTRUCTION SHALL BE SAVED AND PROTECTED FROM DAMAGE.
- THE CONTRACTOR SHALL GIVE ALL PROPERTY OWNERS AND/OR TENANTS OF DEVELOPED PROPERTY ADJUTING THE CONSTRUCTION OF THIS PROJECT A MINIMUM OF TEN (10) DAYS NOTICE PRIOR TO START OF CONSTRUCTION.
- THE CONTRACTOR SHALL BE RESPONSIBLE FOR PRESERVING PROPERTY IRONS. THE CONTRACTOR WILL BE REQUIRED TO RE-ESTABLISH ANY PROPERTY IRONS WHICH ARE DAMAGED OR DESTROYED BY HIS CONSTRUCTION OPERATIONS. SUCH IRONS SHALL BE RE-ESTABLISHED BY A LICENSED LAND SURVEYOR IN ACCORDANCE WITH STATE LAWS.
- THE WATER DISTRIBUTION DIVISION SHALL FIELD LOCATE WATER VALVES ONE TIME DURING CONSTRUCTION WHEN REQUESTED BY THE CONTRACTOR. IT SHALL BE THE CONTRACTOR'S RESPONSIBILITY TO PRESERVE SUCH FIELD LOCATIONS DURING THE CONSTRUCTION PROCESS. WATER VALVES, VALVE BOXES OR FIRE HYDRANTS DAMAGED DURING CONSTRUCTION SHALL BE REPAIRED BY CONTRACTOR AT HIS OWN EXPENSE. VALVE BOXES AND WATER METERS WITHIN THE PROJECT LIMITS SHALL BE ADJUSTED TO MATCH FIELD GRADES.
- IF TRAFFIC WILL BE IMPACTED BY CONSTRUCTION, A TRAFFIC CONTROL PLAN MUST BE SUBMITTED AND APPROVED BY THE CITY TRAFFIC ENGINEER, BRIAN COON AT traffic@wichita.gov BEFORE CONSTRUCTION CAN BEGIN. THE CONTRACTOR SHALL BE RESPONSIBLE FOR ALL TRAFFIC CONTROL MEASURES TO FACILITATE CONSTRUCTION. ALL CONSTRUCTION ZONE MARKINGS AND SIGNAGE SHALL CONFORM TO THE LATEST VERSION OF THE MANUAL ON UNIFORM TRAFFIC CONTROL DEVICES (MUTCD) AS PUBLISHED BY THE US DEPT. OF TRANSPORTATION, FEDERAL HIGHWAY ADMINISTRATION. ALL COSTS ASSOCIATED WITH CONSTRUCTION MARKINGS AND SIGNAGE SHALL BE THE CONTRACTOR'S RESPONSIBILITY.
- ALL AREAS DISTURBED DURING CONSTRUCTION THAT WILL NOT BE UNDER PROPOSED PAVEMENT SHALL BE SEEDED AND MULCHED. COST SHALL BE CONSIDERED SUBSIDIARY TO PROJECT SEEDING.
- CONTRACTOR SHALL LIMIT THE EXTENT OF TRENCH OPEN OVERNIGHT AND WEEKENDS TO LESS THAN 50 FEET.
- EXISTING UTILITIES AND THEIR LOCATION, AS SHOWN ON THE PLANS REPRESENT THE BEST INFORMATION OBTAINABLE FOR DESIGN. LOCATION INFORMATION HAS BEEN OBTAINED FROM THE VARIOUS COMPANIES AND IS EITHER FROM COMPANY UTILITY DRAWINGS OR COMPANY PROVIDED FIELD LOCATIONS. THE PLAN LOCATIONS SHOWN ARE NOT GUARANTEED. ADDITIONAL EXISTING UTILITIES MAY ALSO BE ENCOUNTERED.
- A PORTION OF EXCESS EXCAVATED MATERIAL SHALL BE MOUNDED AROUND MANHOLES WHICH EXTEND MORE THAN ONE (1) FOOT ABOVE THE EXISTING GROUND. SUCH MOUND SHALL BE CONSTRUCTED WITH NEW DEVELOPMENT A SIX (6) FOOT DIAMETER FLAT TOP WITH 4 TO 1 SIDE SLOPES DOWN TO THE ORIGINAL GROUND. THE ELEVATION OF THE FLAT TOP OF THE MOUND SHALL BE 0.4 FOOT BELOW THE TOP OF THE MANHOLE.
- CONTRACTOR SHALL PROVIDE POSITIVE DRAINAGE AWAY FROM ALL MANHOLE COVERS.
- ALL STUBS AND PLUGGED PIPES SHALL BE LOCATED WITH GREEN PLASTIC TAPE IN THE SAME MANNER AS RISERS.
- CONNECTING TO EXISTING MANHOLES:
 PRIOR TO LAYING SEWER LINES USING EXISTING STUBS IN EXISTING MANHOLES, THE CONTRACTOR SHALL EXPOSE AND VERIFY THE ELEVATION, GRADE AND ALIGNMENT OF EXISTING STUBS AND NOTIFY THE ENGINEER OF ANY DEVIATION FROM THE PLANS. WHERE CONNECTION TO AN EXISTING MANHOLE THAT DOES NOT HAVE AN EXISTING STUB OR THE STUB IS UNUSABLE DUE TO ELEVATION GRADE OR ALIGNMENT, THE CONTRACTOR SHALL BORE CUT INTO EXISTING MANHOLE WALL TO MAKE CONNECTION USING APPROVED WATER STOP GASKET, AND RESHAPE THE EXISTING MANHOLE INVERT TO PROVIDE SMOOTH FLOW. THE COST TO CONNECTING TO EXISTING MANHOLES IS INCIDENTAL TO THE PROJECT.
- THE CONTRACTOR SHALL PREVENT ANY CONSTRUCTION DEBRIS FROM ENTERING THE EXISTING SANITARY SEWER DURING CONSTRUCTION.
- THE CONTRACTOR SHALL BE RESPONSIBLE FOR MAINTAINING CONTINUOUS FLOW OF SEWAGE THROUGH CONSTRUCTION. CONTRACTOR'S PROPOSED METHOD FOR MAINTAINING SEWAGE FLOW SHALL BE SUBMITTED AND APPROVED BY THE SEWER MAINTENANCE DIVISION (316-268-4073) PRIOR TO STARTING AND BY-PASSING OF SEWAGE FLOWS.
- ALL TRAFFIC CONTROL DEVICES IN THE WORK ZONE (INCLUDING MARKINGS AND SIGNS) AND THEIR INSTALLATION AND MAINTENANCE SHALL COMPLY WITH THE LATEST EDITION OF THE MANUAL ON UNIFORM TRAFFIC CONTROL DEVICES (MUTCD). ALL TRAFFIC CONTROL DEVICES IN THE TRAVELED WAY OR CLEAR ZONE SHALL BE CRASHWORTHY (NCHRP REPORT 350 OR MASH COMPLIANT).
<http://safety.fhwa.dot.gov/roadwaysdept/policyguide/roadhardware/wzd>
- ALL CONSTRUCTION EQUIPMENT, INCLUDING VEHICLES, MATERIALS, AND DEBRIS, SHALL BE STORED OUTSIDE OF THE CLEAR ZONE. WHERE THIS CANNOT BE ACHIEVED THE CONTRACTOR SHALL PLACE APPROPRIATE SIGNS, OBJECT IDENTIFIERS, AND/OR BARRICADES IN COMPLIANCE WITH MUTCD.
- EXCEPT WHEN REQUIRED FOR SAFETY, TRAFFIC CONTROL SHALL NOT BLOCK ANY LANES OR SIDEWALKS WHEN WORK IS NOT BEING PERFORMED.
- FOLLOW THE LINK BELOW FOR DETAILS ON SPECIFIC CITY OF WICHITA STANDARD DETAILS:
<http://www.wichita.gov/government/departments/pw/standardsconstruction>
- DEVELOPER FOR THIS PROJECT IS:
 TIER 1, LLC, A KANSAS LIMITED LIABILITY COMPANY
 7926 W. 21ST STREET
 WICHITA, KANSAS, 67205
 MARVIN L. SCHELLENBERG, MANAGING MEMBER
 316-721-2153

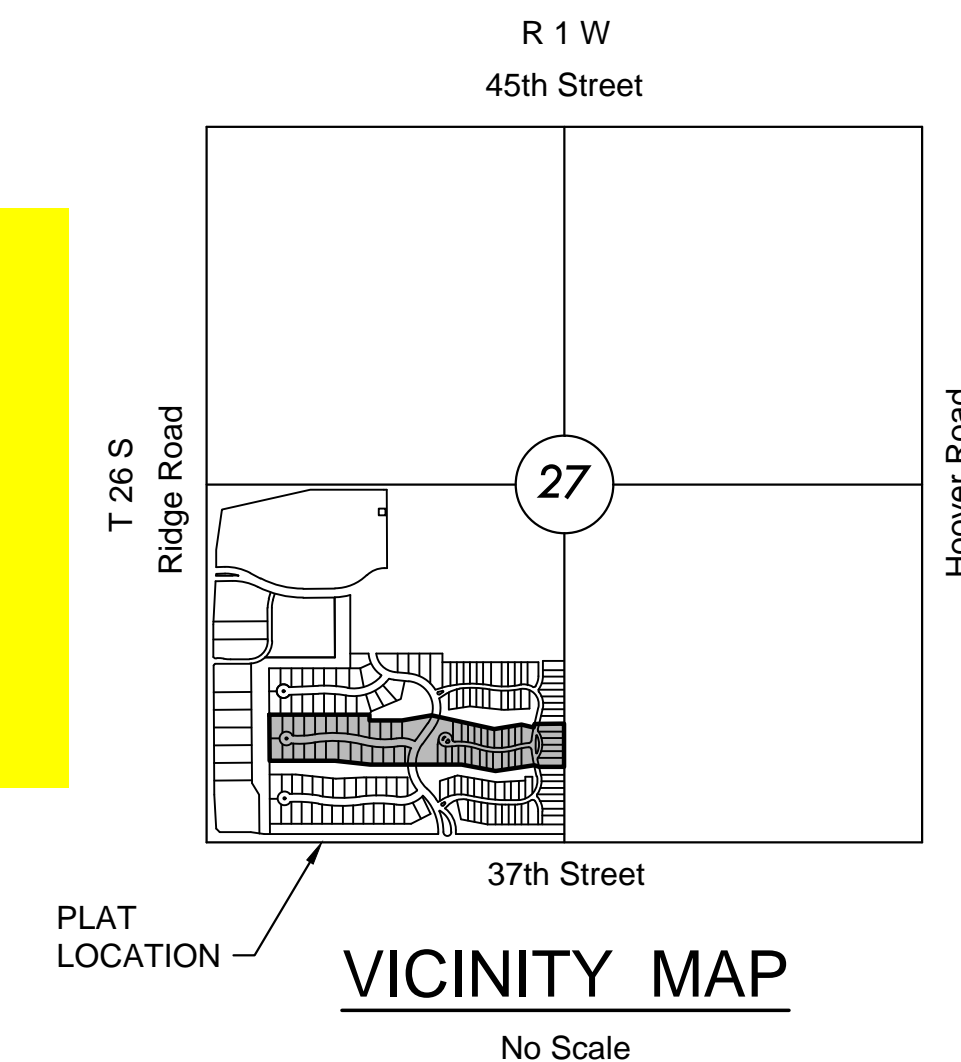
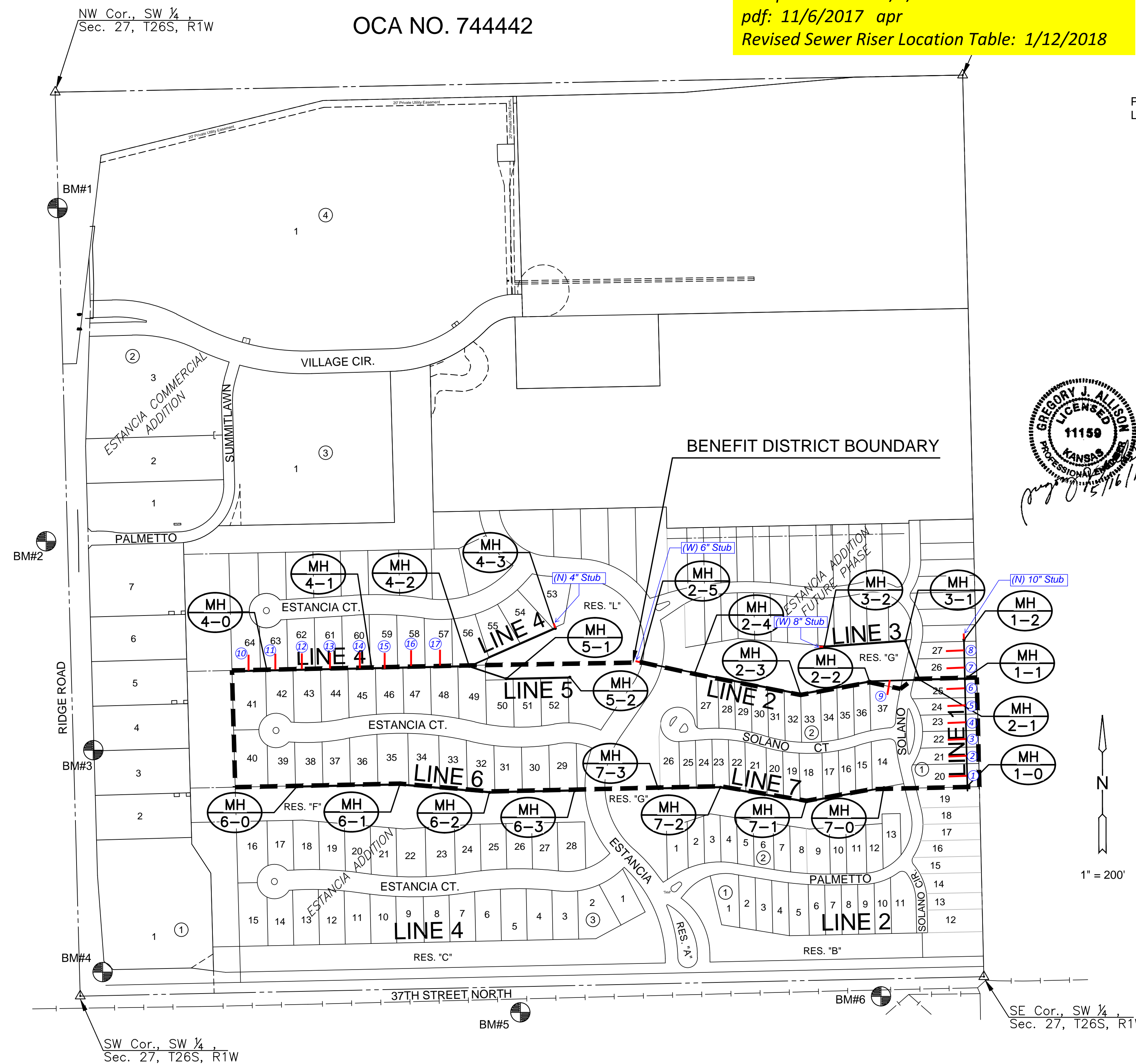
SANITARY SEWER TO SERVE ESTANCIA ADDITION

LATERAL 548, SW1
PROJECT NO. 468-85076

THE CITY OF WICHITA, KANSAS
GARY JANZEN, P.E. - CITY ENGINEER

OCA NO. 744442

Mies Construction - Contractor
J. Brand - City of Wichita, Field Project Engineer
T. Dvorak - City of Wichita, Inspector
As-built
Stubs & Risers
Completion Date: 2/5/2018
pdf: 11/6/2017 apr
Revised Sewer Riser Location Table: 1/12/2018



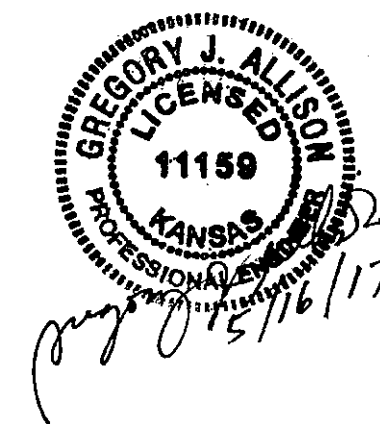
INDEX TO DRAWINGS

SHEET NO.	DESCRIPTION
01	TITLE SHEET
02-04	DETAILS
05	LINES 1 & 2
06	LINES 2 & 3
07	LINE 4
08	LINE 6
09	LINE 5 & 7
10-11	BUBBLE MAP
12-16	BMP SHEETS
17-18	FINAL PLAT

BENCHMARKS

- BM1 (Platted)
Square cut top of curb, on west side of median island and 10 feet north of the south end of the median, lying south of the K-96 and Ridge Rd. 338 feet south of the NW cor. Of the SW 1/4, Sec. 27, Twp. 26S, Rge 1W, 6th P.M.
Elev. = 1335.80' NAVD 88
N = 1711876.95 E = 1622888.17
- BM2
Square cut top of curb at east end of nose of island, south drive to Ridgewood Medical Building, 4031 N. Ridge Rd. West side of Ridge Rd.
Elev. = 1336.03' NAVD 88
N = 17110906.12 E = 1622855.09
- BM3
RR spike in NW face of 3rd powerpole north of 37th/Ridge Rd intersection, east side of Ridge RD.
Elev. = 1332.68' NAVD 88
N = 1710297.85 E = 1622992.31
- BM4
Square cut northeast corner of traffic signal vault at northeast corner of 37th/Ridge Rd intersection. 12 feet east of traffic pole base.
Elev. = 1330.34' NAVD 88
N = 1709651.54 E = 1623019.45
- BM5
Square cut top of curb at north nose of island at drive to Mid-Kansas Pediatric Associates at 6837 W 37th St. N.
Elev. = 1336.07' NAVD 88
N = 1709534.22 E = 1624236.09
- BM6
Square cut top of curb on east side of Ridgeport Street. at end of curb at southeast corner of Ridgeport St. and 37th St. N. intersection.
Elev. = 1333.08' NAVD 88
N = 1709580.98 E = 1625286.23

Vertical Datum: NAVD 88

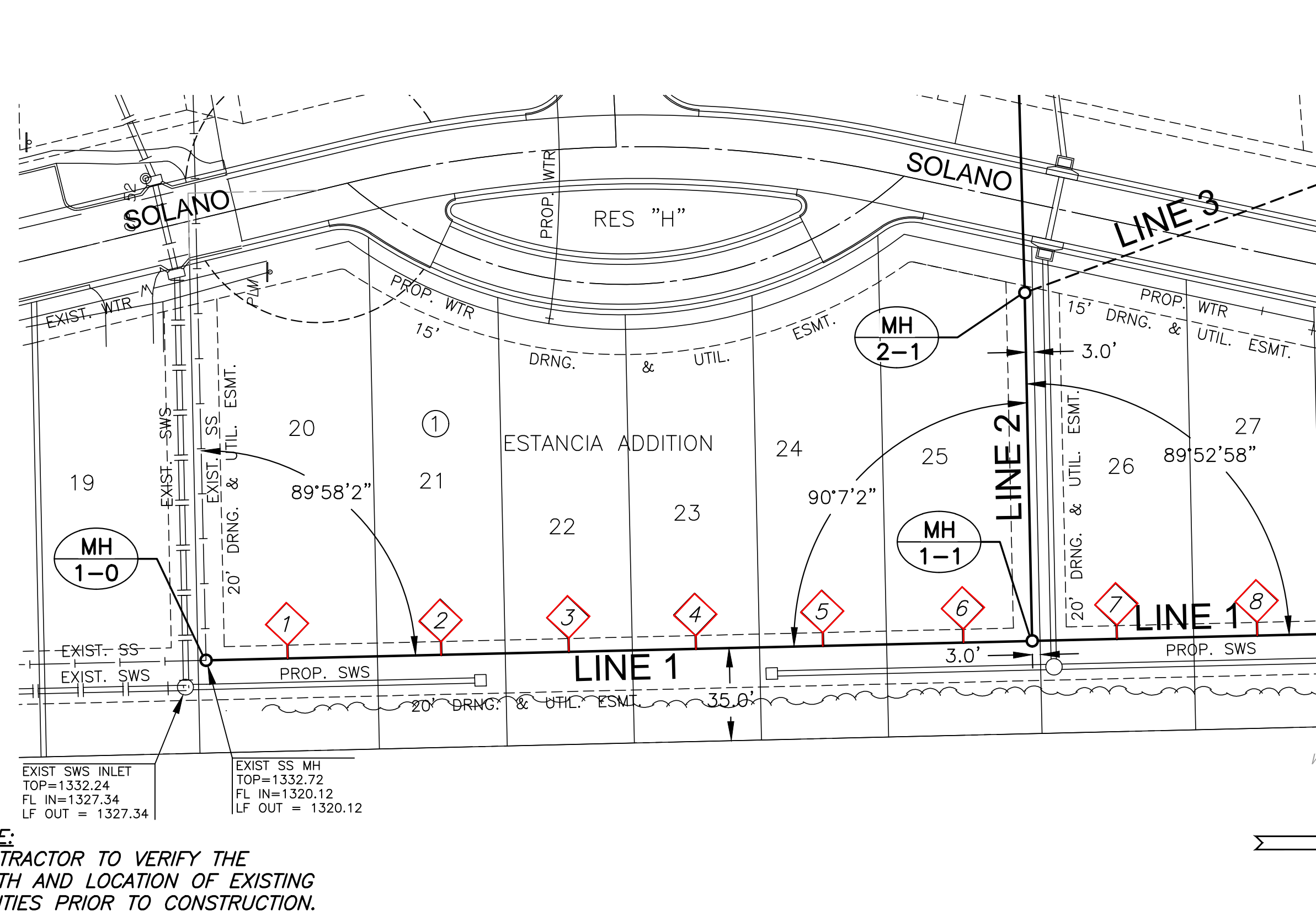


SANITARY SEWER PLANS FOR
ESTANCIA ADDITION
 PHASE 2

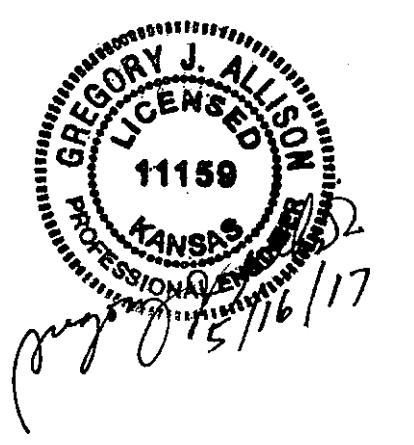
©2017 MKEC Engineering All Rights Reserved
 These drawings and their contents, including, but not limited to, all concepts, designs, & ideas are the exclusive property of MKEC Engineering (MKEC), and may not be used or reproduced in any way without the express consent of MKEC.

TITLE	
PROJECT NO.	468-85076
DATE	MAY 2017
SCALE	1" = 200'
DESIGNED	DFL
DRAWN	DFL
CHECKED	GJA
NO.	REVISION
DATE	
SHEET NO.	
01 OF 18	

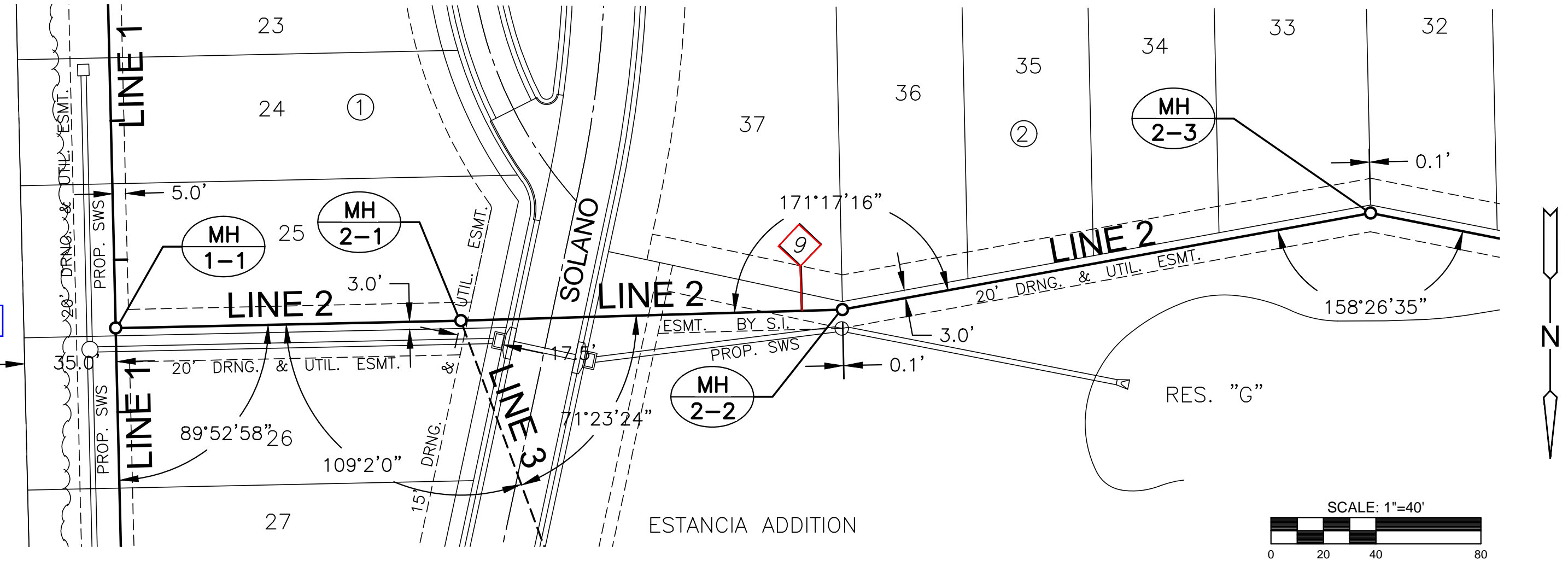
PLOT DATE: Wednesday, May 17, 2017 8:10:14 AM



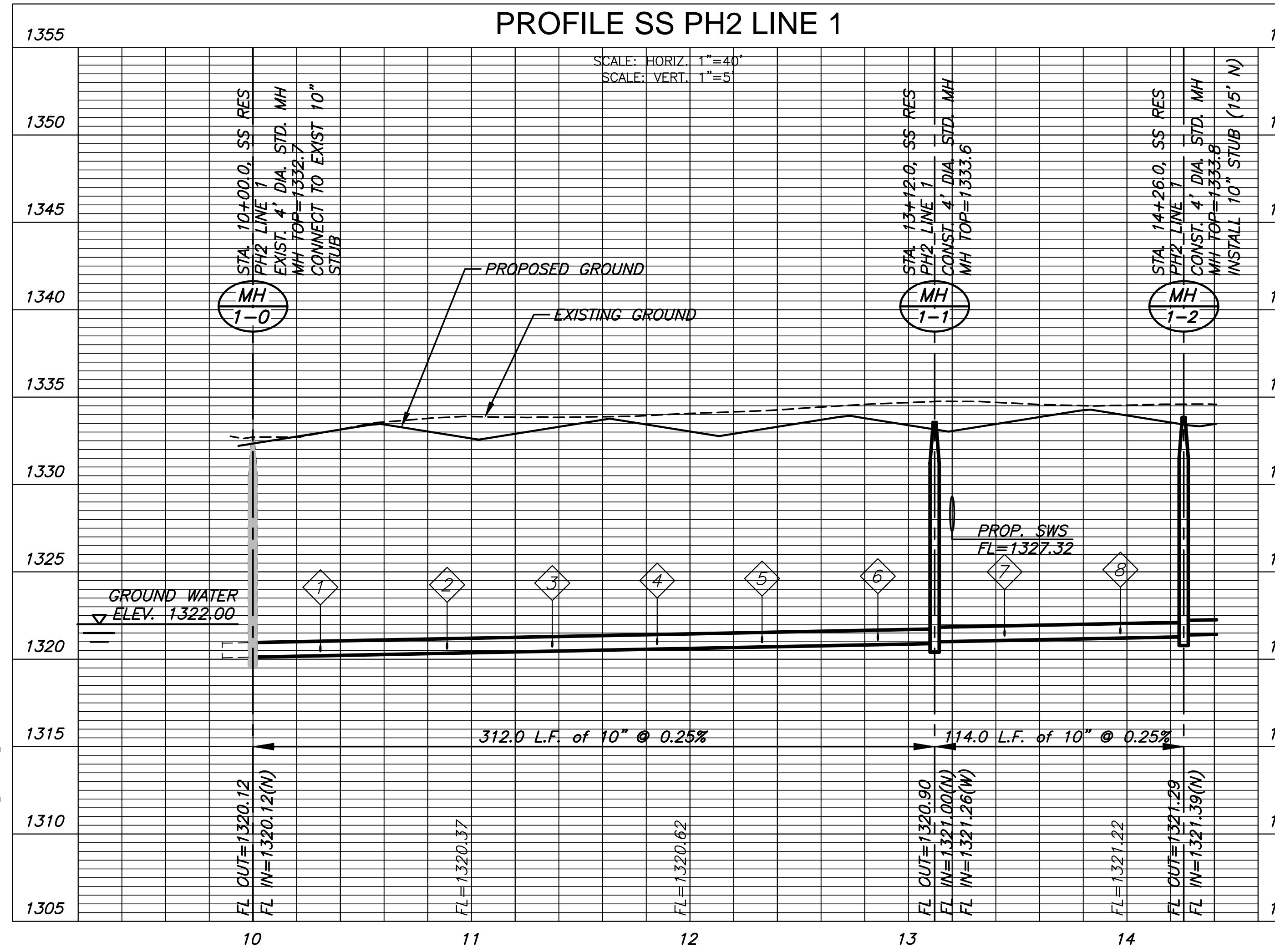
Distance from Main to Riser	Distance from		SEWER SERVICE RISER TABLE						FOR INFORMATION ONLY		
	Upstream MH	Downstream MH	NO.	TYPE	LOCATION			STATION	DIRECTION	APPROXIMATE LENGTH	
					LOT NO.	BLOCK NO.	LINE NO.			VERTICAL (FT)	HORIZONTAL (FT)
10' Lt	281'	31'	1	4" TEE	20	1	1	10+31	LT.	6'	10'
10' Lt	222.3'	89'	2	4" TEE	21	1	1	10+89	LT.	6'	10'
10' Lt	175'	137'	3	4" TEE	22	1	1	11+37	LT.	6'	10'
10' Lt	127'	185'	4	4" TEE	23	1	1	11+85	LT.	6'	10'
10' Lt	79'	233'	5	4" TEE	24	1	1	12+33	LT.	6'	10'
10' Lt	26'	286'	6	4" TEE	25	1	1	12+86	LT.	6'	10'
10' Lt	82'	32'	7	4" TEE	26	1	1	13+44	LT.	6'	10'
10' Lt	29'	85'	8	4" TEE	27	1	1	13+97	LT.	6'	10'
10' Lt	129.5'	15.9'	9	4" TEE	37	2	2	12+61	LT.	17'	10'



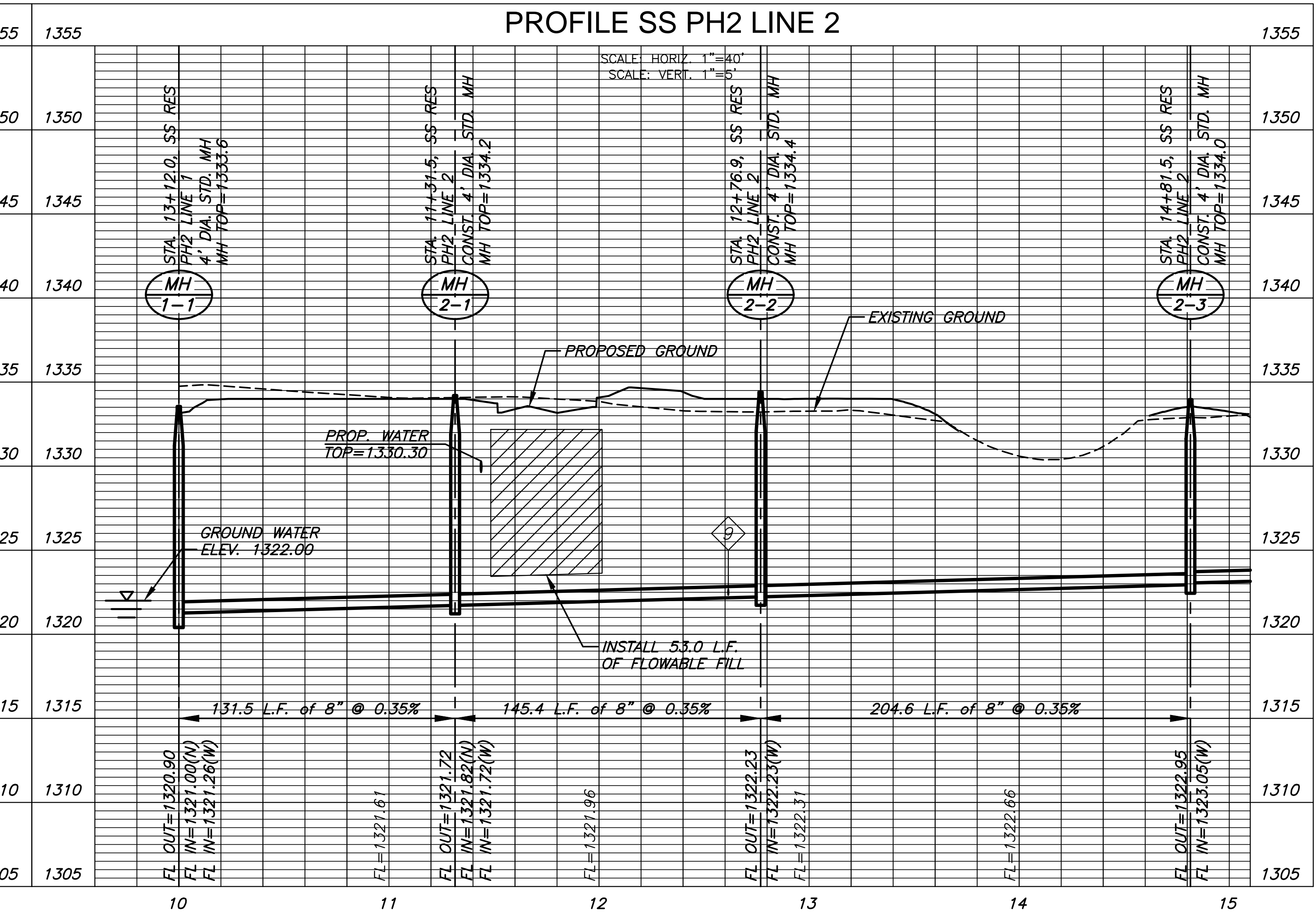
NOTE:
CONTRACTOR TO VERIFY THE DEPTH AND LOCATION OF EXISTING UTILITIES PRIOR TO CONSTRUCTION.



PLAN SS PH2 LINE 1
PROFILE SS PH2 LINE 1



PLAN SS PH2 LINE 2
PROFILE SS PH2 LINE 2

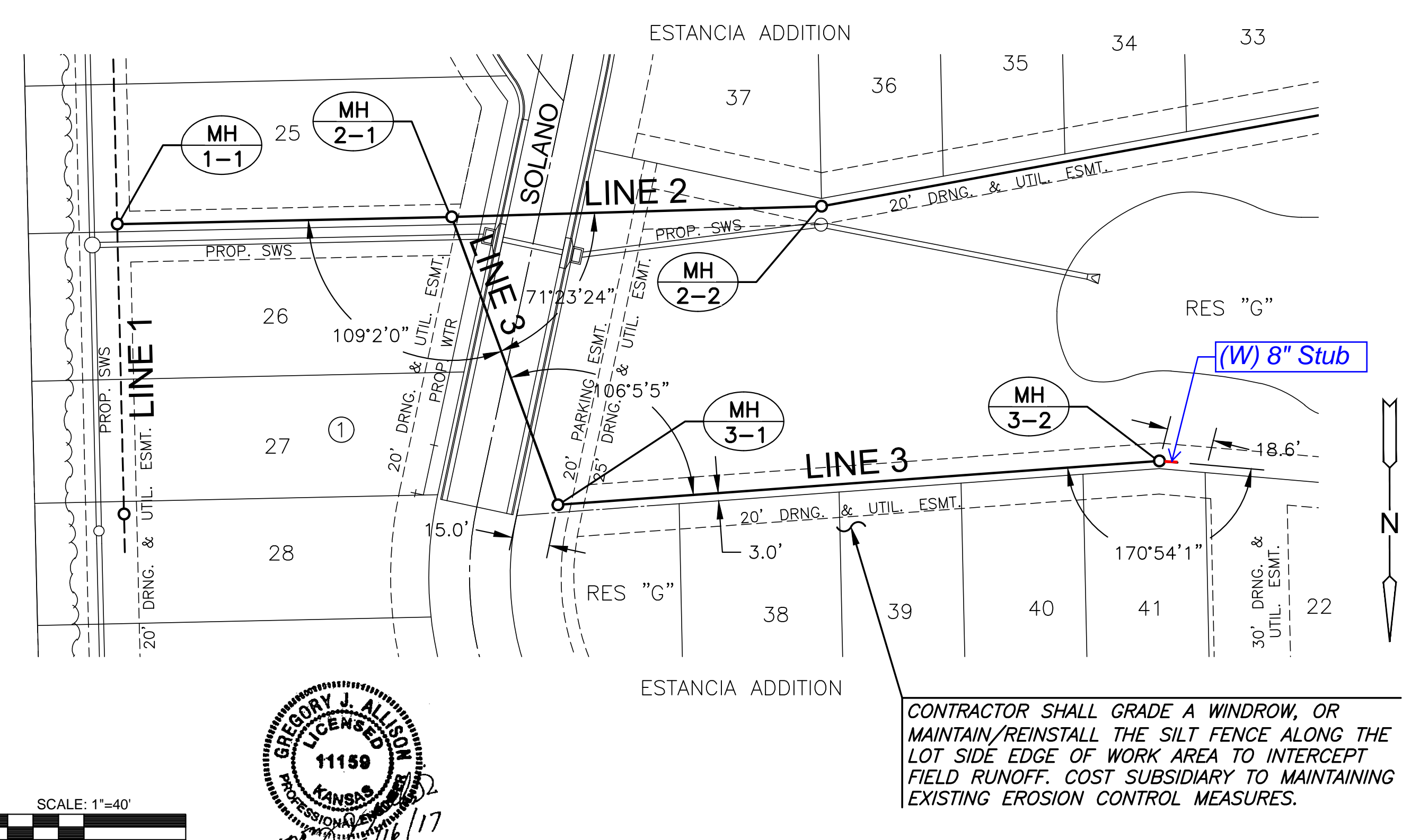
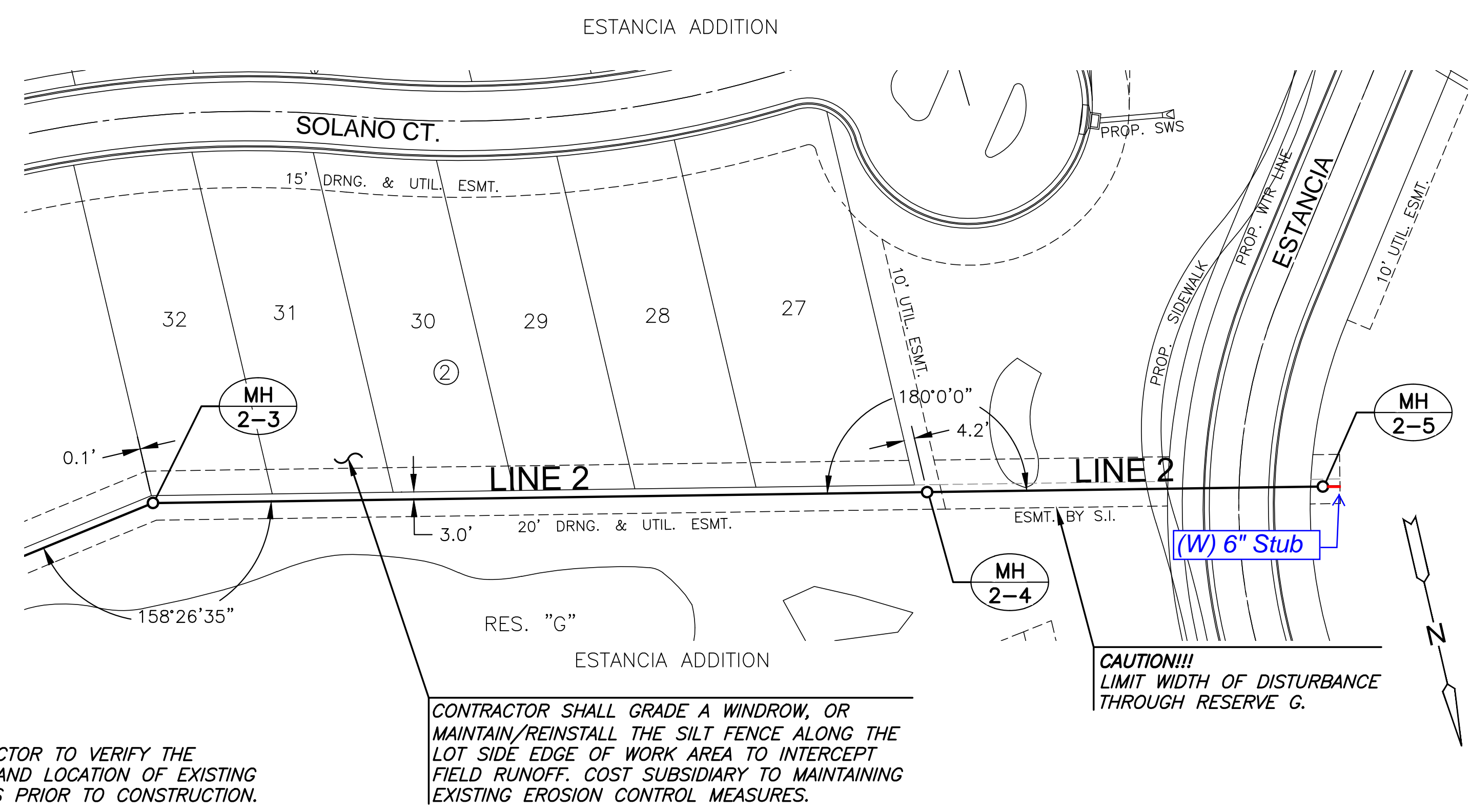


SANITARY SEWER PLANS FOR
ESTANCIA ADDITION
 PHASE 2

©2017 MKEC Engineering
 All Rights Reserved
 www.mkec.com
 These drawings and their contents, including, but not limited to, all concepts, designs, & ideas are the exclusive property of MKEC Engineering (MKEC), and may not be used or reproduced in any way without the express consent of MKEC.

LINE 1 & 2	
PROJECT NO.	468-85076
DATE	MAY 2017
SCALE	1"=40'
DESIGNED	DRAWN
DFL	DFL
CHECKED	GJA
NO.	REVISION
DATE	
SHEET NO.	
05 OF 18	

PLOTTED: Wednesday, May 31, 2017 @ 11:13AM

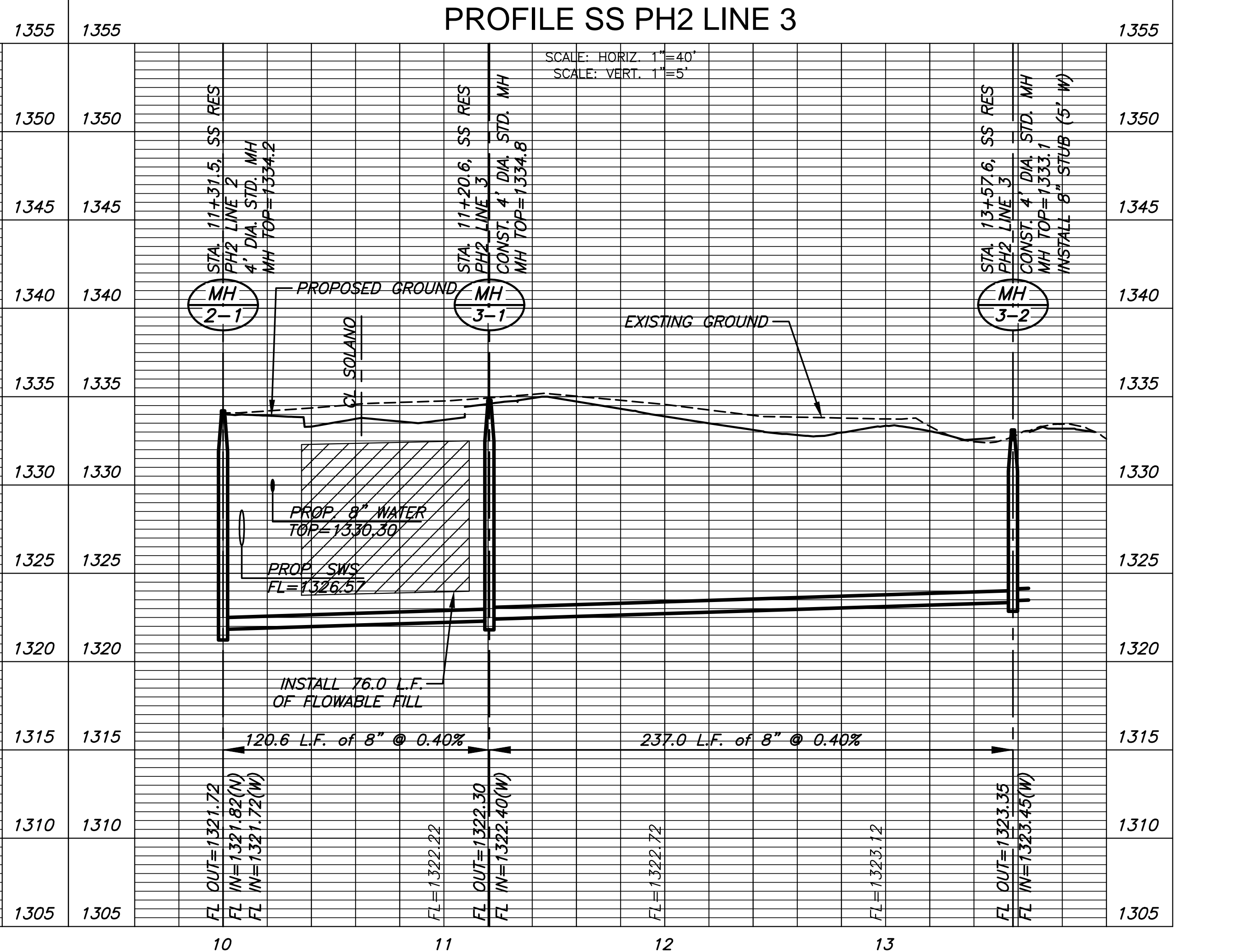
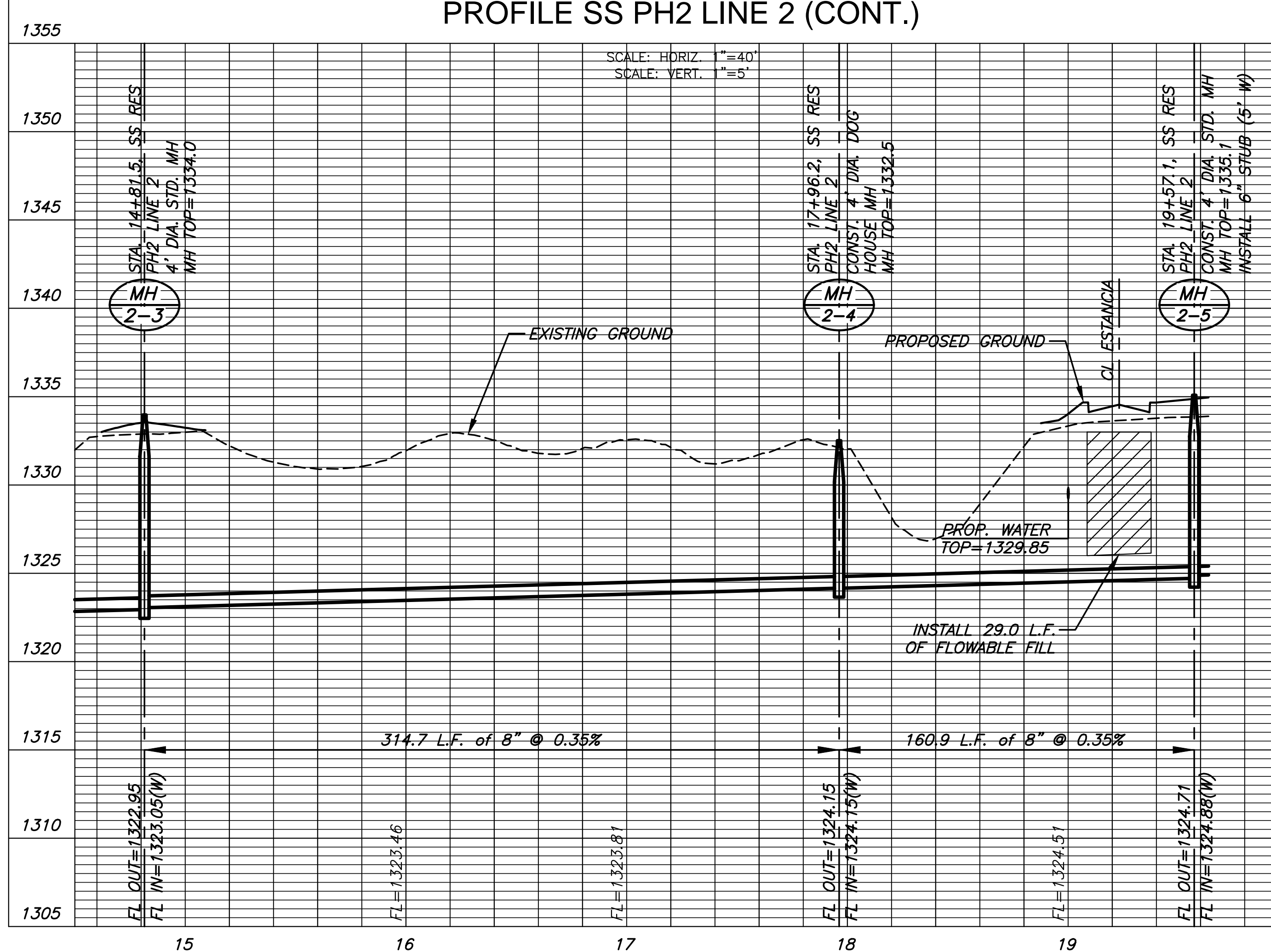


NOTE:
CONTRACTOR TO VERIFY THE DEPTH AND LOCATION OF EXISTING UTILITIES PRIOR TO CONSTRUCTION.

CONTRACTOR SHALL GRADE A WINDROW, OR MAINTAIN/REINSTALL THE SILT FENCE ALONG THE LOT SIDE EDGE OF WORK AREA TO INTERCEPT FIELD RUNOFF. COST SUBSIDIARY TO MAINTAINING EXISTING EROSION CONTROL MEASURES.

PLAN SS PH2 LINE 2 (CONT.)
PROFILE SS PH2 LINE 2 (CONT.)

PLAN SS PH2 LINE 3
PROFILE SS PH2 LINE 3



SANITARY SEWER PLANS FOR
ESTANCIA ADDITION
PHASE 2

©2017 MKEC Engineering All Rights Reserved
www.mkec.com
These drawings and their contents, including, but not limited to, all concepts, designs, & ideas are the exclusive property of MKEC Engineering (MKEC), and may not be used or reproduced in any way without the express consent of MKEC.

LINE 2 (CONT.) & 3

PROJECT NO.	468-85076
DATE	MAY 2017
SCALE	1"=40'
DESIGNED	DFL
DRAWN	DFL
CHECKED	GJA

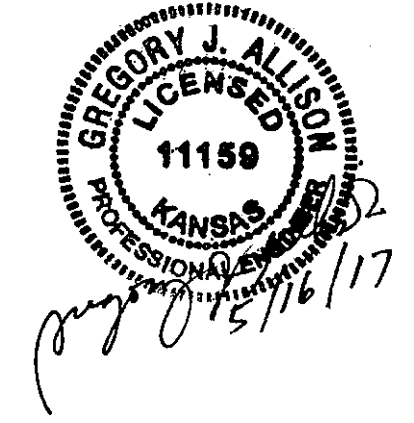
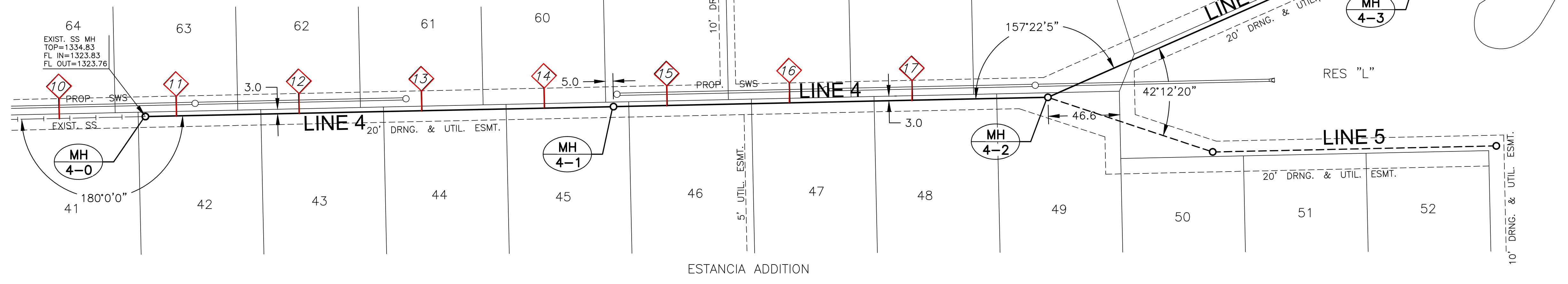
NO.	REVISION	DATE

SHEET NO. 06 OF 18

J:\PROJECTS\2017\1401010462 - PREMIER ESTANCIA\DWG\CIVIL\CADD\SANRESIDENTIAL\PH2\4462-8B-02-PH2.DWG

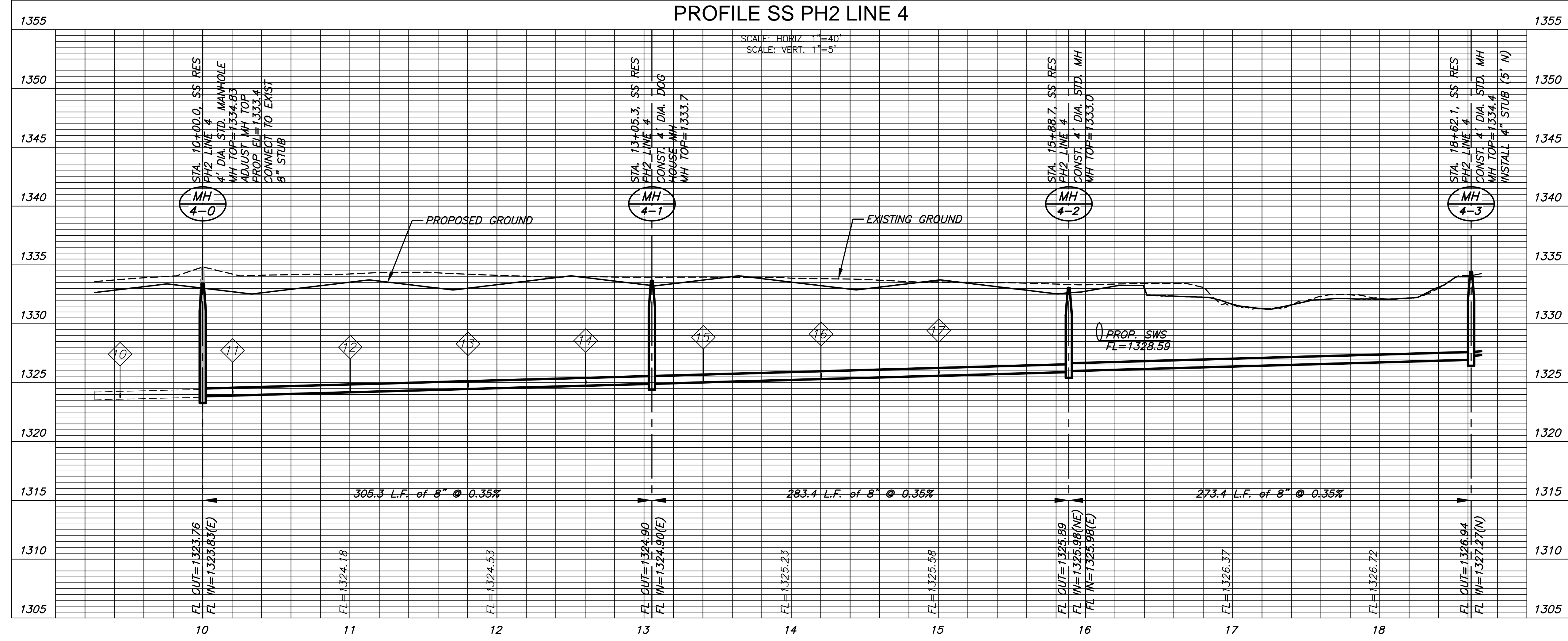
J:\PROJECTS\2017\1401010462 - PREMIER ESTANCIA\DWG\CIVIL\CADD\SANRESIDENTIAL\PH2\4462-8B-08-PH2.DWG
 PLOTTED: Wednesday, May 17, 2017 @ 10:21 AM

SEWER SERVICE RISER TABLE						FOR INFORMATION ONLY		Distance from				
NO.	TYPE	LOCATION			STATION	DIRECTION	APPROXIMATE LENGTH		Main to Riser	Upstream		Downstream
		LOT NO.	BLOCK NO.	LINE NO.			VERTICAL (FT)	HORIZONTAL (FT)		MH	MH	
10	4" TEE	64	3	4	9+44	LT.	14'	8'	8' Lt	56'	193.9'	
11	4" TEE	63	3	4	10+20	LT.	14'	8'	8' Lt	285.3'	20'	
12	4" TEE	62	3	4	11+00	LT.	14'	8'	8' Lt	205.3'	100'	
13	4" TEE	61	3	4	11+80	LT.	14'	8'	8' Lt	125.3'	180'	
14	4" TEE	60	3	4	12+60	LT.	14'	8'	8' Lt	45.3'	260'	
15	4" TEE	59	3	4	13+40	LT.	14'	8'	8' Lt	248.7'	34.7'	
16	4" TEE	58	3	4	14+20	LT.	14'	8'	8' Lt	168.7'	114.7'	
17	4" TEE	57	3	4	15+00	LT.	14'	8'	8' Lt	88.7'	194.7'	



NOTE:
 CONTRACTOR TO VERIFY THE
 DEPTH AND LOCATION OF EXISTING
 UTILITIES PRIOR TO CONSTRUCTION.

PLAN SS PH2 LINE 4
 PROFILE SS PH2 LINE 4



SANITARY SEWER PLANS FOR
ESTANCIA ADDITION
 PHASE 2

©2017
 MKEC Engineering
 All Rights Reserved
 www.mkec.com
 These drawings and their contents,
 including, but not limited to, all concepts,
 designs, & ideas are the exclusive
 property of MKEC Engineering (MKEC),
 and may not be used or reproduced in any
 way without the express consent of MKEC.

LINE 4	
PROJECT NO.	468-85076
DATE	MAY 2017
SCALE	1"=40'
DESIGNED	DRAWN
DFL	DFL
CHECKED	GJA
NO.	REVISION
DATE	
SHEET NO.	
07 OF 18	

©2017
 MKEC Engineering
 All Rights Reserved
 www.mkec.com
 These drawings and their contents, including, but not limited to, all concepts, designs, & ideas are the exclusive property of MKEC Engineering (MKEC), and may not be used or reproduced in any way without the express consent of MKEC.

LINE 6

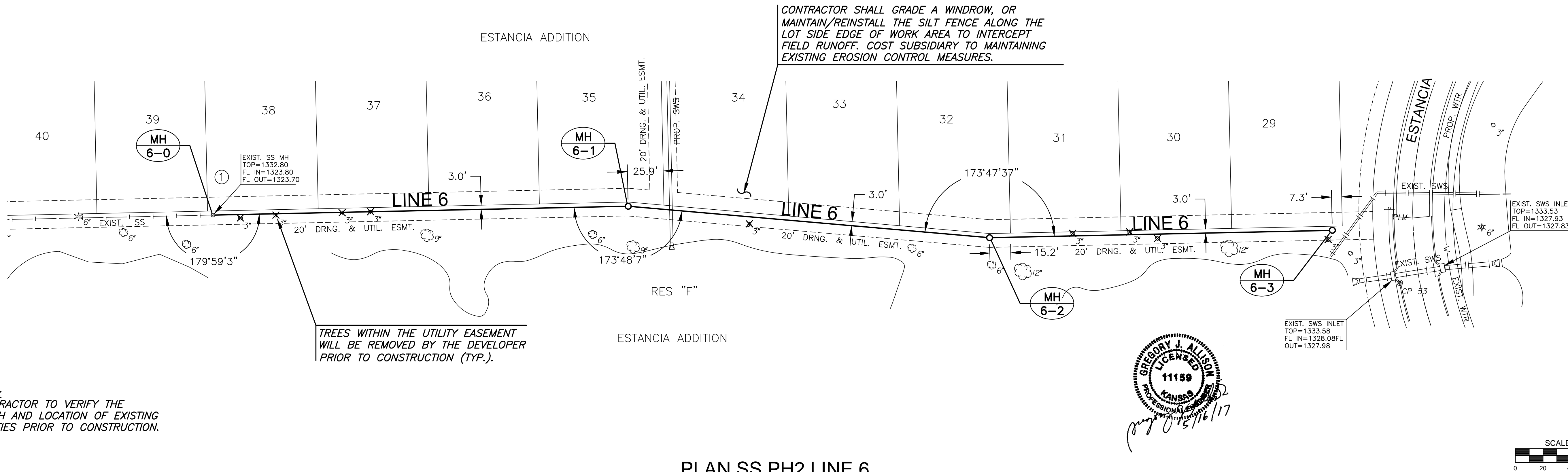
PROJECT NO.	468-85076	
DATE	MAY 2017	
SCALE	1"=40'	
DESIGNED	DRAWN	CHECKED
DFL	DFL	GJA

NO.	REVISION	DATE

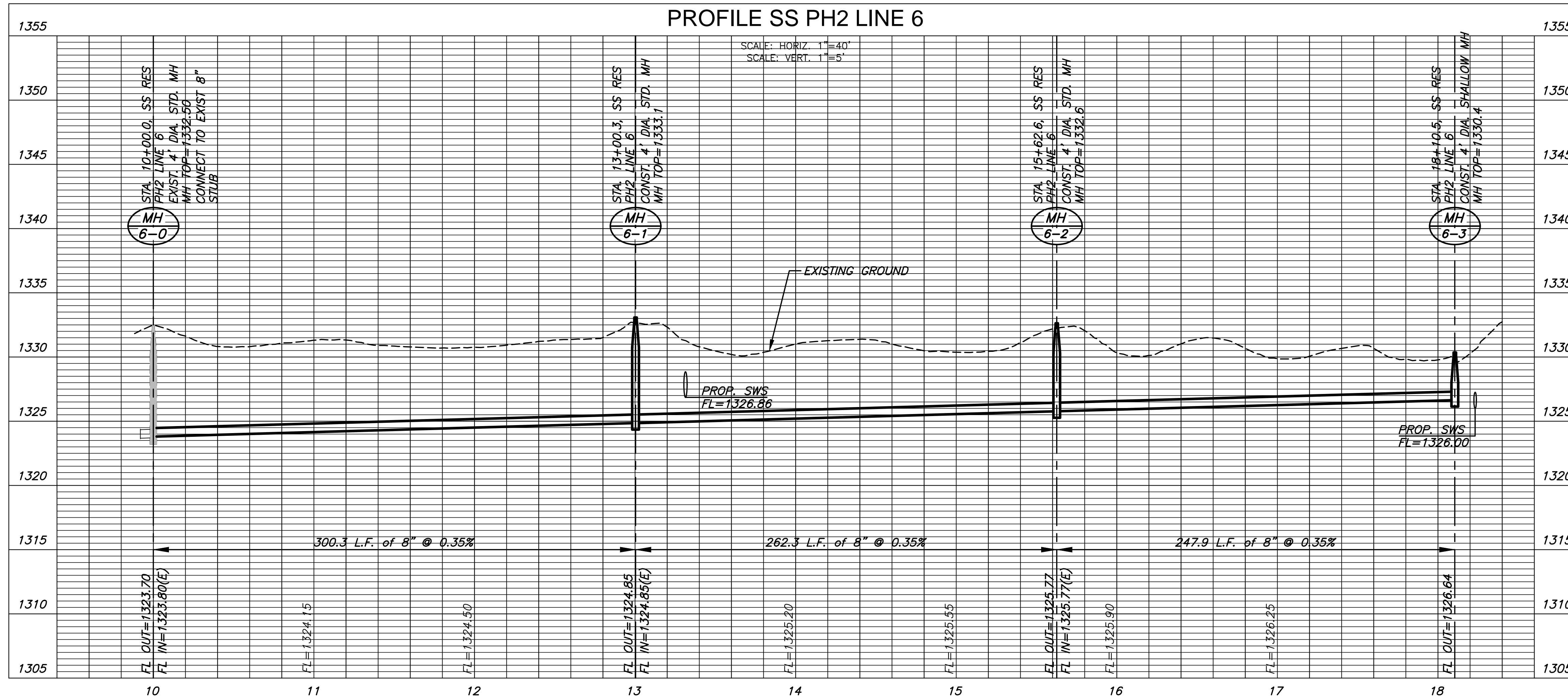
SHEET NO.

PLOTTED: Wednesday, May 17, 2017 @ 10:22AM

J:\PROJECTS\2017\1401010462 - PREMIER ESTANCIA\DWG\CIVIL\CADD\SANRESIDENTIAL\PH2\4462-8B-04-PH2.DWG



PLAN SS PH2 LINE 6
PROFILE SS PH2 LINE 6

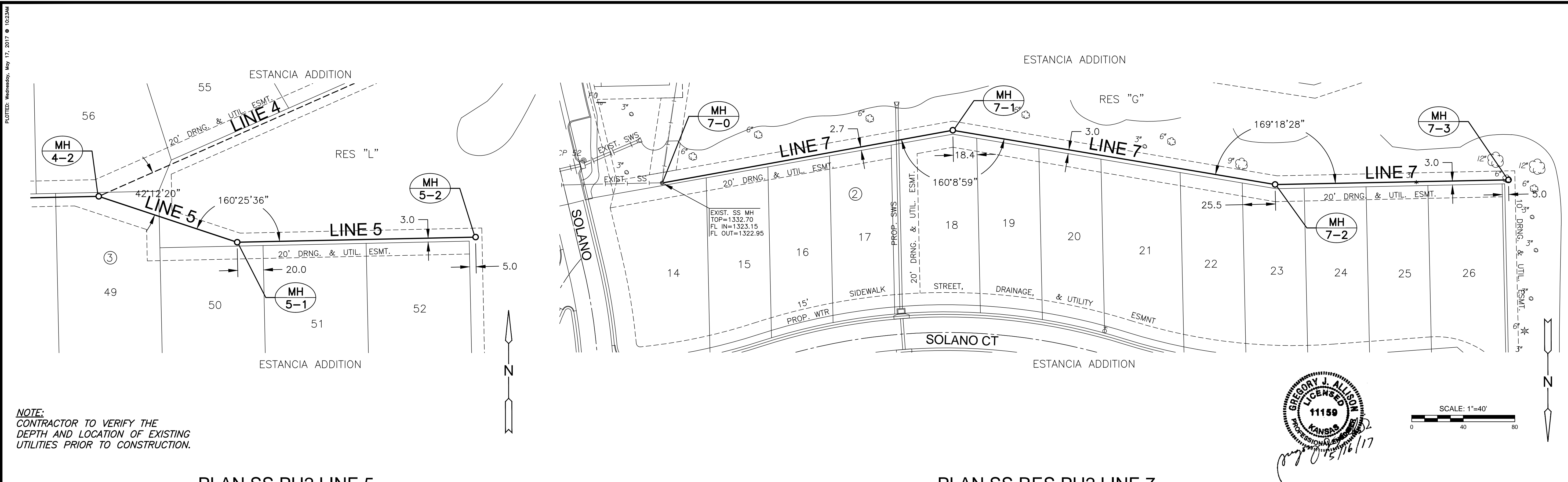


©2017 MKEC Engineering
 All Rights Reserved
 www.mkec.com
 These drawings and their contents, including, but not limited to, all concepts, designs, & ideas are the exclusive property of MKEC Engineering (MKEC), and may not be used or reproduced in any way without the express consent of MKEC.

LINE 5 & 7

PROJECT NO.	468-85076	
DATE	MAY 2017	
SCALE	1"=40'	
DESIGNED	DRAWN	CHECKED
DFL	DFL	GJA

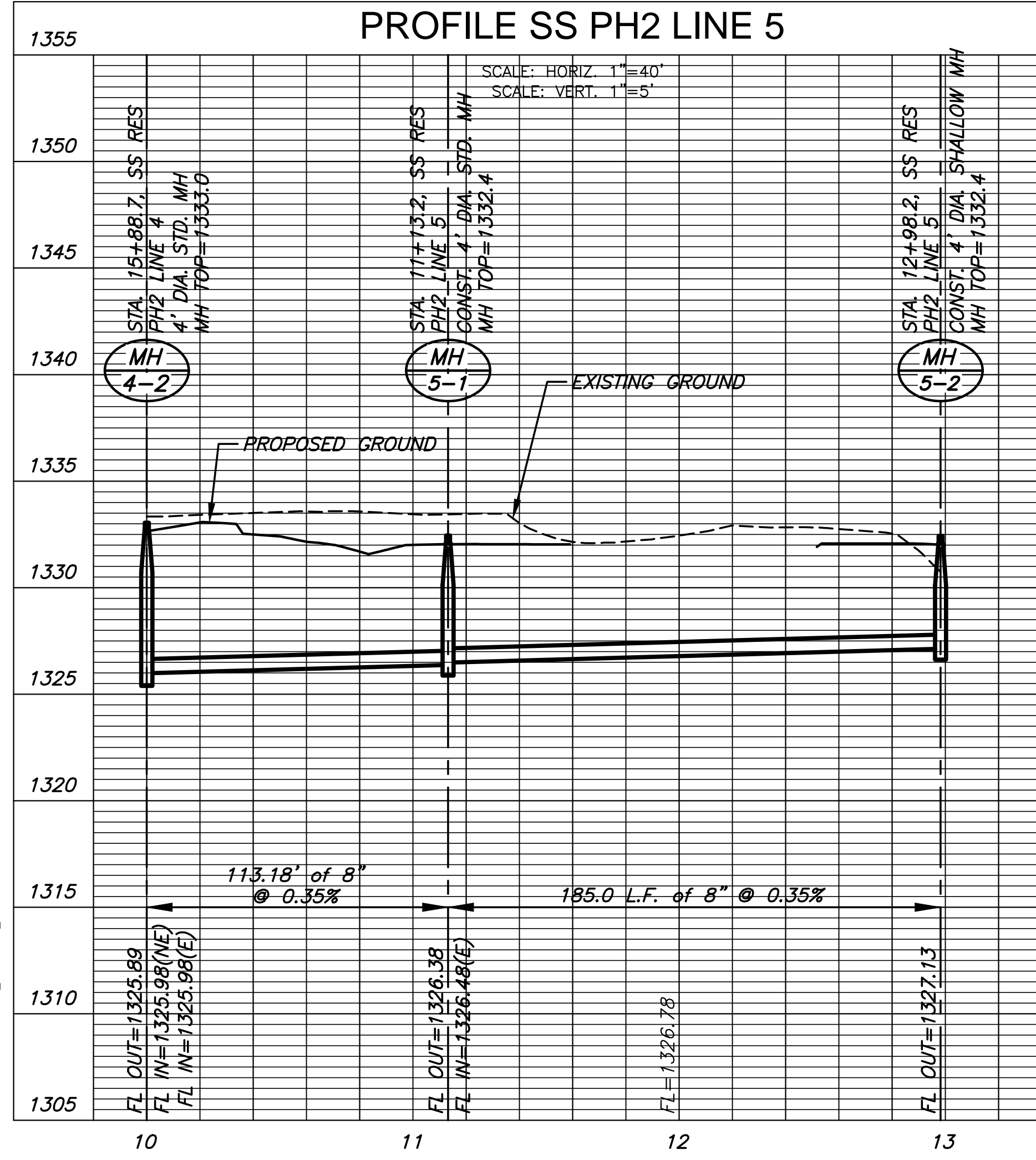
NO.	REVISION	DATE



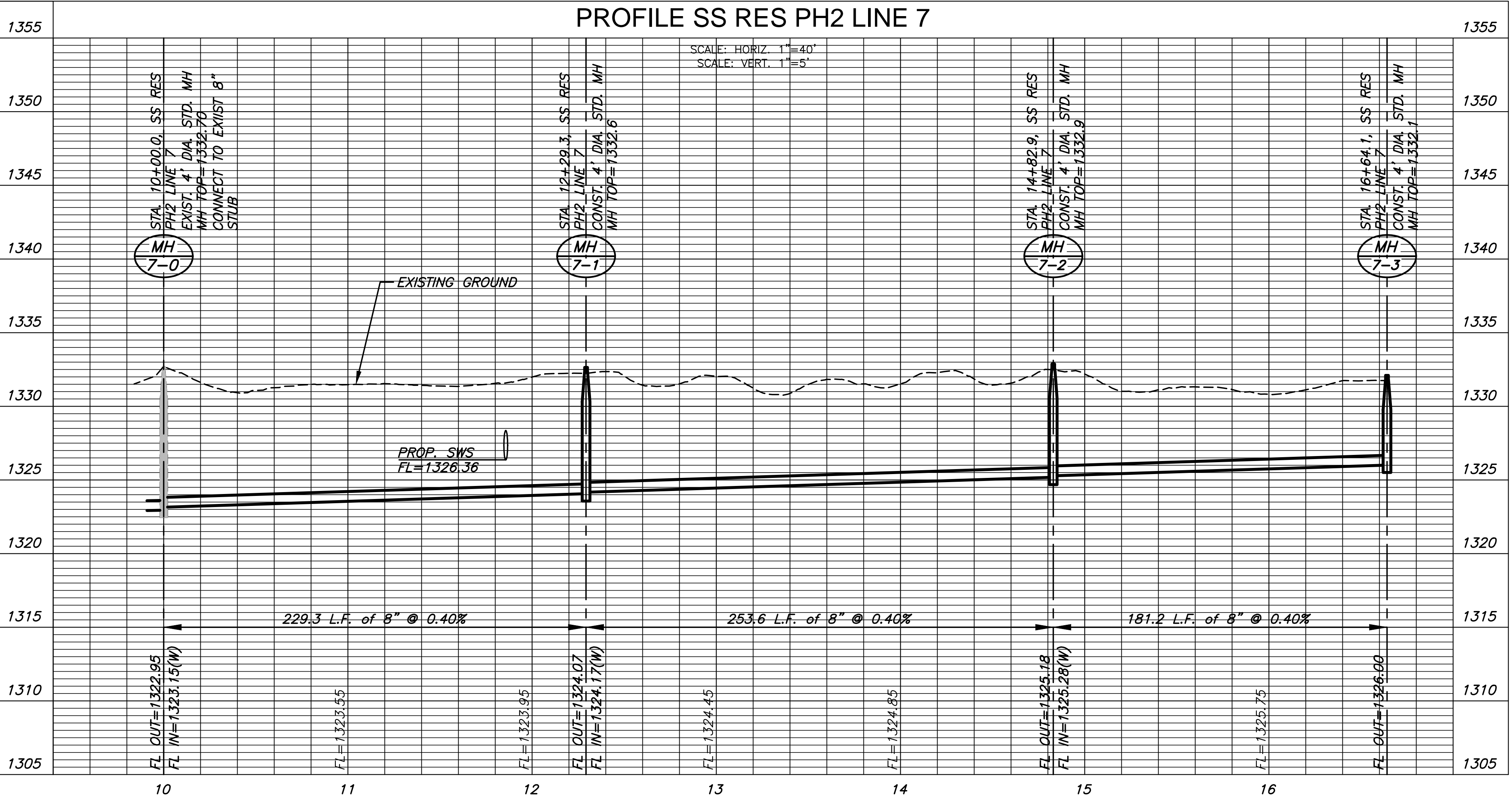
GREGORY J. ALLISON
 LICENSED PROFESSIONAL ENGINEER
 KANSAS
 11159
 05/16/17

NOTE:
 CONTRACTOR TO VERIFY THE DEPTH AND LOCATION OF EXISTING UTILITIES PRIOR TO CONSTRUCTION.

PLAN SS PH2 LINE 5
PROFILE SS PH2 LINE 5



PLAN SS RES PH2 LINE 7
PROFILE SS RES PH2 LINE 7

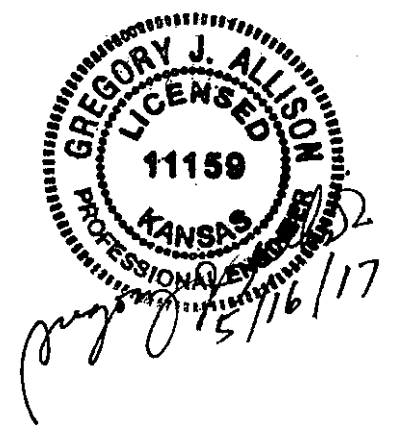


J:\PROJECTS\2017\1401010462 - PREMIER ESTANCIA\DWG\CIVIL\CADD\SANRESIDENTIAL\PH2\4462-85-076-02-SS-PH2.DWG
 PLOTTED: Wednesday, May 17, 2017 @ 10:23AM

PLOTTED: Wednesday, May 17, 2017 @ 10:23AM

J:\PROJECTS\2017\1401010482 - PREMIER ESTANCIA\05-CIVIL\CADD\SANRESIDENTIAL\PH2\4482-BM-01-PH2.DWG

CONTROL POINTS



CP #100
 5/8" rebar with MKEC Aluminum Cap
 N = 1709596.07 E = 1624178.12 Elev. = 1334.38
 South side of 37th Street N., West of entrance drive to Mid
 Kansas Pediatric Association at address 6837 W 37th St N.
 36 feet NW of fire hydrant
 6 feet south of south edge of asphalt

CP #101
 5/8 inch rebar with MKEC Aluminum Cap
 N = 1709656.12 E = 1625269.09 Elev. = 1331.35
 North side of 37th St. N
 5 feet north of north edge of asphalt
 On extended line to the north with the centerline of Ridgeport
 Street

CP #102
 5/8 inch rebar with MKEC Aluminum Cap
 N = 1710347.41 E = 1622982.67 Elev. = 1330.50
 East Ridge Road in flowline of ditch
 45 feet northwest of 3rd powerpole north of 37th Street N.
 Horizontal and Vertical Datum:

Horizontal Datum: Kansas Coordinate System 1983 South Zone.
 (Horizontal coordinates modified to ground using a scale factor of
 1.000120014)
 Vertical Datum: NAVD 88



SANITARY SEWER PLANS FOR
ESTANCIA ADDITION
 PHASE 2

©2017
 MKEC Engineering
 All Rights Reserved
 www.mkec.com
 These drawings and their contents,
 including, but not limited to, all concepts,
 designs, & ideas are the exclusive
 property of MKEC Engineering (MKEC),
 and may not be used or reproduced in any
 way without the express consent of MKEC.

BUBBLE MAP

PROJECT NO.	468-85076
DATE	MAY 2017
SCALE	1" = 100'
DESIGNED	DFL
DRAWN	DFL
CHECKED	GJA

NO.	REVISION	DATE

SHEET NO.

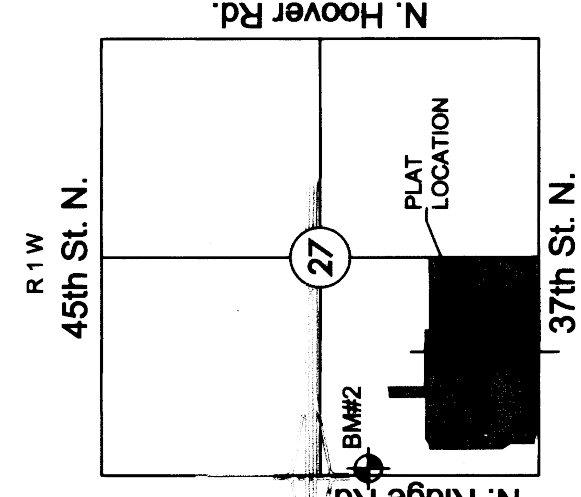
EVERY ATTEMPT HAS BEEN MADE TO INSURE ALL COORDINATE VALUES SHOWN
 ARE AN ACCURATE AND TRUE REPRESENTATION OF THE CURRENT PLANS. ALL
 VALUES ARE TO BE CONFIRMED WITH THE FINAL SIGNED PLAN SET BEFORE USE.

FINAL PLAT

ESTANCIA ADDITION

AN ADDITION TO WICHITA, SEDGWICK COUNTY, KANSAS

A=16°23'29"
R=400.00
L=144.04'
CB=180°13'08"E



VICINITY MAP



LEGEND

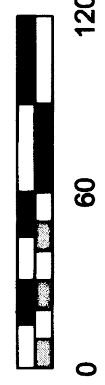
Date of Survey, April 28, 2015

- △ = Section corner monument found
- ⊙ = Found 3/4" rebar w/ MKEC CLS 39 id. cap
- = Set 3/4" rebar w/ MKEC CLS 39 id. cap
- = Measured
- (M) = Calculated from measured
- (D) = Described
- ⊕ = Benchmark
- U.E. = Utility Easement
- D.E. = Drainage Easement

Basis of Bearing: Kansas coordinate system of 1983 south zone grid bearing of N88°46'20"E on the south line of the SW 1/4, Sec. 27, T26S, R1W, 6th P.M.

This plat is surveyed and platted on NAD83 using Kansas state plane south zone coordinates, modified to the surface, having a combined adjustment scale factor of 1.000120014401728

1"=60' / 1:720

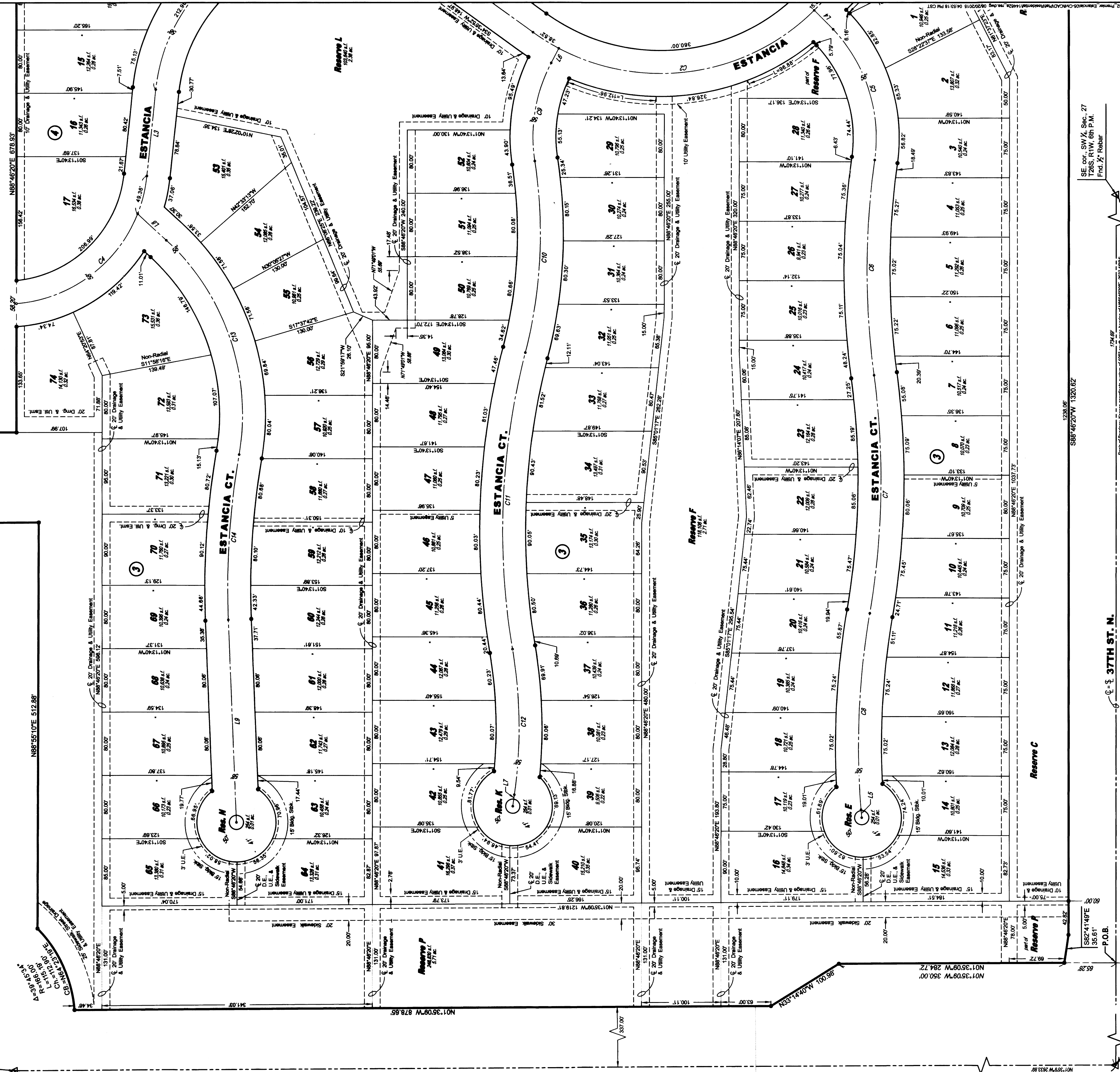


MINIMUM ROAD ELEVATIONS (LOWEST POINTS)	LOTS	BLOCK ELEVATION	MINIMUM ROAD ELEVATIONS (LOWEST POINTS)		
45-41	3	1334.1	48-56	3	1334.1
64-74	3	1334.1			

BENCHMARK

BM#2 Square cut top of curb on west side of median island and 10 foot north of the south end of said median lying south of K-96 and Ridge Rd. (being 338 feet S. of the NW corner SW 1/4, Sec. 27, T26S, R1W, 6th P.M.)
Elev. = 1335.80 NAVD88

NW cor., SW 1/4, Sec. 27, T26S, R1W, 6th P.M.
Frd. 1" Cut



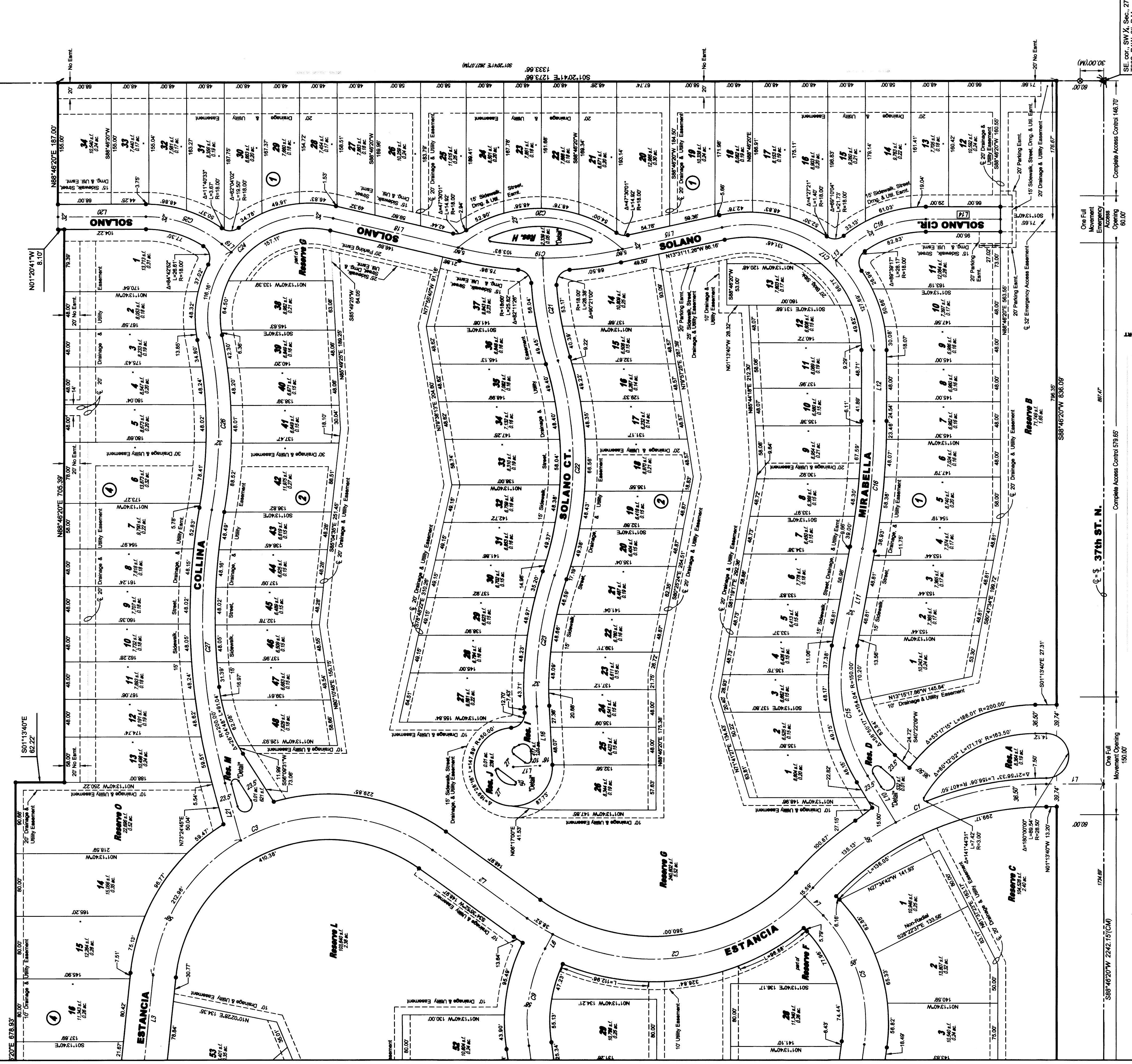
Q-S 37TH ST. N.

P.O.C.
SW cor., SW 1/4, Sec. 27, T26S, R1W, 6th P.M.
Frd. 1" Mag nail in asphalt roadway

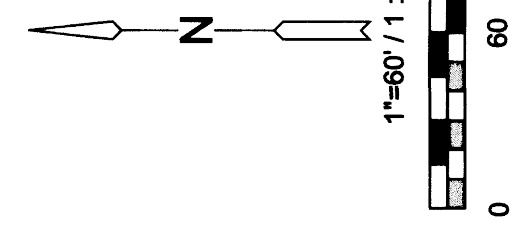
1794.00' Base of Bearings for the coordinate system of 1983 south zone survey (NAD 83) system
Complete Access Control 1308.05'



FINAL PLAT ESTANCIA ADDITION AN ADDITION TO WICHITA, SEDGWICK COUNTY, KANSAS



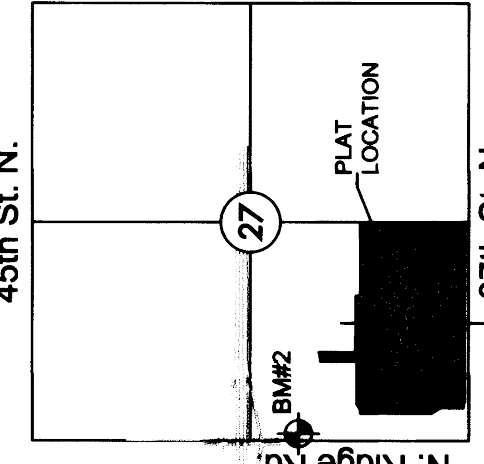
NE 1/4 SW 1/4 Sec. 27, T26S R1W 6th PM, Frd. Limestone 1.5' deep with diolot in center



LEGEND

- Date of Survey: April 29, 2015
- ⚠ = Section corner monument found
 - ⊙ = Found 3/4 rebar w/ MKEC CLS 39 ft. cap
 - ⊙ = Set 3/4 rebar w/ MKEC CLS 39 ft. cap
 - (M) = Measured
 - (CM) = Calculated from measured
 - (D) = Described
 - ⊙ = Benchmark
 - U.E. = Utility Easement
 - D.E. = Drainage Easement

R1W
45th St. N.



VICINITY MAP

MINIMUM PAD ELEVATIONS (LOWEST AREAS)		
LOTS	BLOCK ELEVATION	AVOID REF
1-48	2	1334.1
5, 6, 13, 14	4	1334.1



Basis of Bearing: Kansas coordinate system of 1983 south zone grid bearing of N88°46'20"E on the south of the SW 1/4, Sec. 27, T26S, R1W, 6th P.M.

This plat is surveyed and platted on NAD83 using Kansas state plane south zone coordinates, modified to the surface, having a combined adjustment scale factor of 1.00020014401728

BENCHMARK

BM#5 Square cut top of curb on west side of median island and 10 feet north of the south end of said median lying south of K-96 and Ridge Rd. being 338 feet S. of the NW corner SW 1/4, Sec. 27, T26S, R1W, 6th P.M.) Elev. = 1335.00 NAVD86

