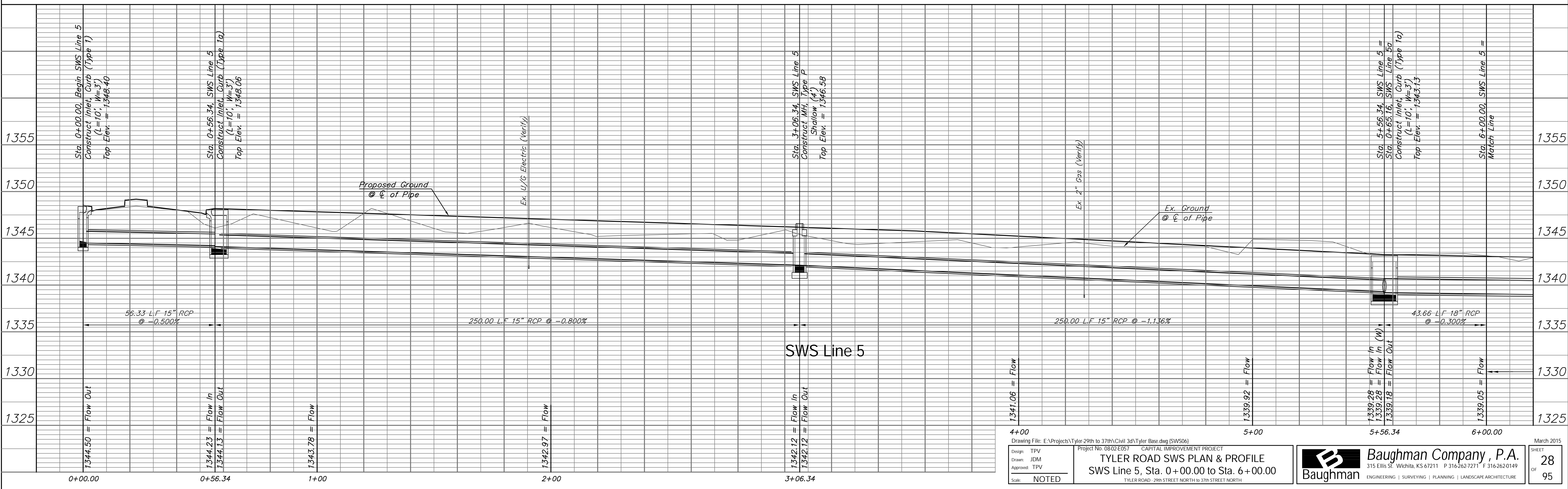
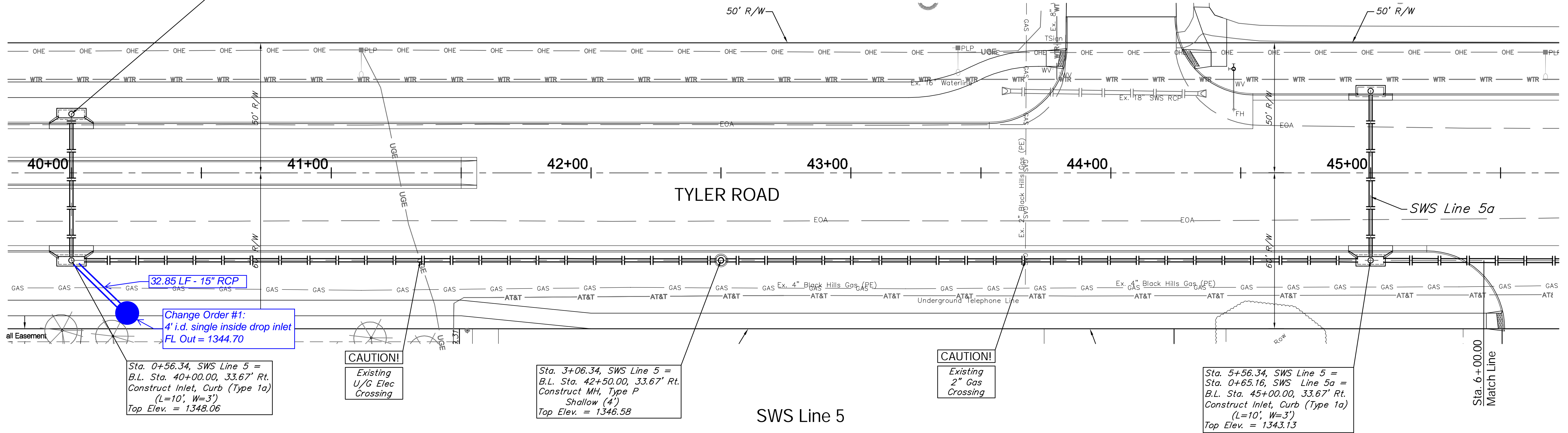
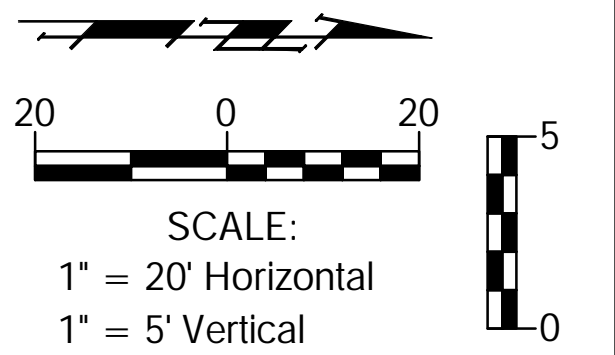


BENCHMARK:

BM #6 - "T" Post Set Five Feet South of Maize South School Entrance Sign at the North Side of East Entrance
Sta. 44+48, 86' Lt.
Elev. = 1344.89 (NGVD 29)

Sta. 0+00.00, Begin SWS Line 5 =
B.L. Sta. 40+00.00, 22.67' Lt.
Construct Inlet, Curb (Type 1a)
(L=10', W=3')
Top Elev. = 1348.40



Drawing File: E:\Projects\Tyler-29th to 37th\Civil 3d\Tyler Base.dwg (SWS06)
Project No. 0802E057 CAPITAL IMPROVEMENT PROJECT
Design: TPV
Drawn: JDM
Approved: TPV
Scale: NOTED

TYLER ROAD SWS PLAN & PROFILE
SWS Line 5, Sta. 0+00.00 to Sta. 6+00.00
TYLER ROAD - 29th STREET NORTH to 37th STREET NORTH

Baughman Company, P.A.
315 Ellis St., Wichita, KS 67211 P 316.262.7271 F 316.262.0149
ENGINEERING | SURVEYING | PLANNING | LANDSCAPE ARCHITECTURE

March 2015
SHEET 28 OF 95