

SCALE:
1" = 20' HORIZONTAL
1" = 5' VERTICAL

Remove Exstg Manhole, Abandon Exstg SWS Pipe N & S in Place & Plug

See Sht 48
LINE 2A Profile
Sta 0+72.56 LINE 2A =
Sta 33+01.00, 33.67' Lt BL A
Construct Type 1A Inlet (Double)
(11'4" x 4'4")
Elev= 117.74Top

CAUTION!
OH, ELEC
12" GAS
(Abandoned)
Crosses

Sta. 3+88.38 Line 2
End City Project#:
Begin KDOT Project#:
87N-0459-01

Remove Exstg Manhole, Inlets, and Pipe as shown. Abandon Exstg SWS Pipe(N & S) in Place & Plug

CAUTION!
6" WTR (Aband)
UG AT&T
Crosses

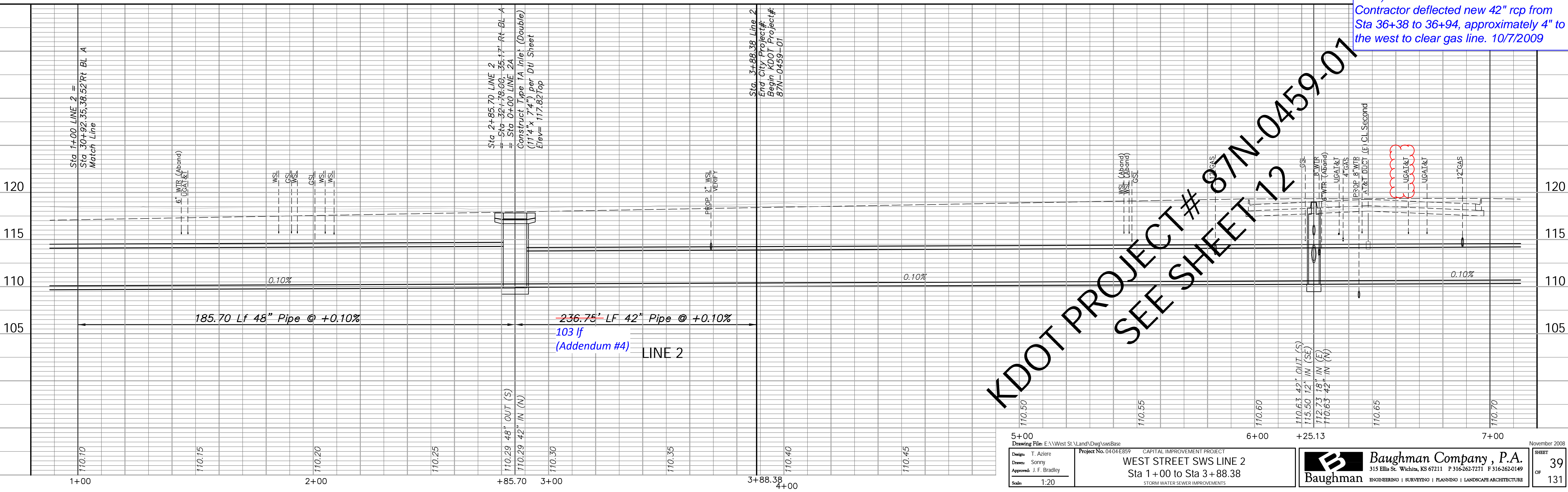
CAUTION!
WSL x4
GSL x2
OH ELEC
Crosses

Sta 2+85.70 LINE 2
= Sta 32+78.00, 35.17' Rt BL A
Construct Type 1A Inlet (Double)
(11'4" x 7'4") per Dtl Sheet
Elev= 117.82Top

NOTE: Contractor to use caution during excavation on this Project. Multiple Underground Utilities parallel and cross New Construction. Underground Utilities are shown located according to the best information available at the time of drawing. Contractor to FIELD VERIFY exact locations and depths PRIOR TO Construction on this Project.

AT&T duct in conflict with proposed 42" SWS. Diamond Engineering removed casing and raised cables on 10/7/2009. WB Carter land 42" RCP under cables on 10/7/2009.

Gas main in conflict with proposed 42" RCP SWS (where line turned to the north) between BL Sta. 36+70 and 36+75. Contractor deflected new 42" rcp from Sta 36+38 to 36+94, approximately 4" to the west to clear gas line. 10/7/2009



KDOT PROJECT # 87N-0459-01
SEE SHEET 12