

# GENERAL NOTES:

- The Contractor shall comply with all applicable safety regulations. All construction shall be completed following current City Standard Specifications and Special Provisions.
- Contractor will be required to provide notice to utility companies a minimum of seventy-two (72) hours prior to any excavation, as follows:  
Kansas One-Call 687-2470  
The Contractor must notify the following in case of an emergency:  
AT&T 1-800-246-8464  
Black Hills Energy 1-800-694-8989  
City of Wichita Water & Sewer 1-316-219-8921  
City of Wichita Stormwater 1-316-268-4090  
City of Wichita Traffic 1-316-268-4034  
Cox Communications 1-888-249-3530  
Kansas Gas Service 1-888-462-4950  
Westar Energy 1-800-544-4857
- Utility service lines, poles, etc. are to be adjusted as necessary by others prior to construction unless the plans specifically call for the adjustment. The Contractor or unless the plans specifically identify a utility to be adjusted by its owner during construction. Existing utilities and their location, as shown on the plans, represent the best information obtainable for design. The Contractor will be required to work around existing utilities within the right-of-way which do not conflict with proposed construction.
- Rubble from the removal of miscellaneous structures and excess excavation which is to be wasted shall be disposed of on sites to be provided by the Contractor. These sites shall be approved by the Engineer as to suitability, appearance and site location. Locations, in the opinion of the Engineer, that will leave an unsightly appearance will not be approved. All disposal sites must be approved by the Kansas Department of Health and Environment. Material either stockpiled or disposed of in a flood plain will require a Kansas State Board of Agriculture permit. Any material dumped in waters of the United States or wetlands is subject to U.S. Corps of Engineers permitting regulations. Any material buried or stockpiled beyond approved construction limits will require additional archaeological investigations unless buried in a previously approved borrow location.
- Trees and shrubs in public right-of-way which are in direct conflict with proposed new construction shall be removed by the Contractor with the City Engineer's approval. Trees and shrubs which are not in direct conflict with proposed new construction shall be saved and protected from damage.
- The Contractor shall give all property owners and/or tenants of developed property abutting the construction of this project a minimum of ten (10) days notice prior to start of construction.
- The Contractor shall be responsible for preserving property irons. The Contractor will be required to re-establish any property irons which are damaged or destroyed by his construction operations. Such irons shall be re-established by a licensed land surveyor in accordance with state laws.
- The Engineering Division shall field locate water valve one time during construction when requested by the Contractor. It shall be the Contractor's responsibility to preserve such field locations during the construction process. Water valves, valve boxes or fire hydrants damaged during construction shall be repaired by Contractor at his own expense. Valve boxes and water meters within the project limits shall be adjusted to match field grades by the contractor.
- The Contractor shall notify the consultant engineer and Tom Mason at 316-268-4574 with the City of Wichita with the anticipated construction start date and notify them of project completion.
- If traffic will be impacted by construction, a traffic control plan must be submitted and approved by the City Traffic Engineer, Brian Coon at [traffic@wichita.gov](mailto:traffic@wichita.gov), before construction can begin. The Contractor shall be responsible for all traffic control measures to facilitate construction. All construction zone markings and signage shall conform to the latest version of Manual on Uniform Traffic Control Devices (MUTCD) as published by the US Dept. of Transportation, Federal Highway Administration. All costs associated with construction markings and signage shall be the Contractors responsibility.
- All elevations shown are NAVD 88.
- All areas disturbed during construction that will not be under proposed pavement shall be restored to match existing conditions.

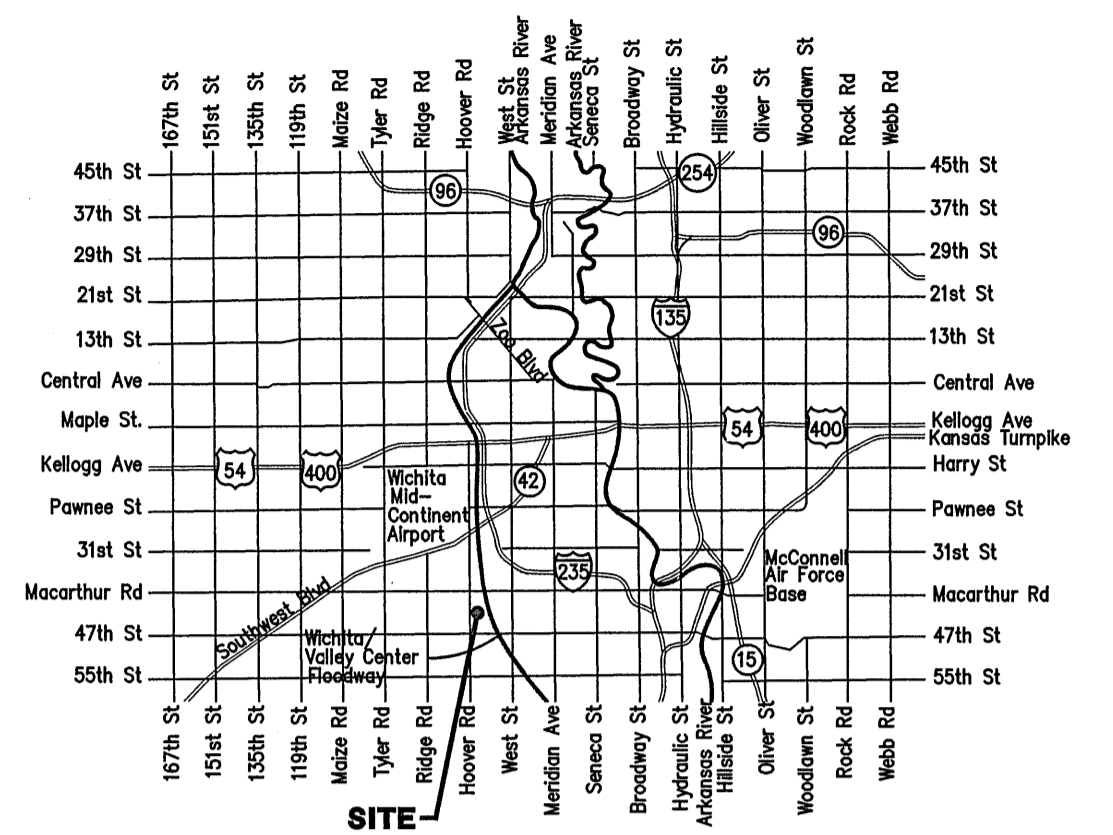
- Any sidewalk, drive approach, curb, or street pavement removed to construct project must have a pavement cut permit and be replaced by the City contractor. Permits can be obtained by calling 316-268-4501 or 316-268-4480.
- All applicable fees (tap, equity, in lieu of & main benefit) must be paid before any connections can be made on this project. Quotes can be obtained on fees by calling 316-268-4555.
- City Maintenance of sanitary sewer mains ends at last structure within easement or right-of-way line.
- All stubs and capped pipes shall be located with green plastic tape in the same manner as risers.
- Connecting to Existing Manholes: Prior to laying sewer lines using existing stubs in existing manholes, the Contractor shall expose and verify the elevation, grade and alignment of existing stubs and notify the Engineer of any deviation from the plans. Where the stub is unusable due to elevation grade or alignment, the Contractor shall remove the stub and plug the hole, and reshape the existing manhole invert to provide smooth flow. Where connection to an existing manhole that does not have an existing stub, the Contractor shall core cut into existing manhole wall to make connection using approved water stop gasket, and reshape the existing manhole invert to provide smooth flow. The cost of connect to existing manholes is incidental to the project.
- Contractor shall limit the extent of trench open overnight and weekends to less than 50 feet.
- Contractor shall provide positive drainage away from all manhole covers.
- The Contractor shall prevent any construction debris from entering the existing sanitary sewer during construction.
- The Contractor shall be responsible for maintaining continuous flow of sewage through construction. Contractors proposed method for maintaining sewage flow shall be submitted and approved by the Sewer Maintenance Division (316-268-4073) prior to starting and by-passing of sewage flows.
- Any over excavation from manhole and pipe removal shall be backfilled with AB-3 compacted to 90-95% ASTM D698.
- The Contractor shall protect from damage and support existing utilities through construction as approved by the utility owner and the Engineer at the contractor's expense.
- Contractor shall grade around exposed manholes at a 1:1 slope. Manholes set lower than existing grade shall have a 9" berm constructed around manhole to prevent infiltration into sanitary sewer system. Cost of dirt, labor, equipment, etc. to be incidental to cost of manhole. Easements shall be graded with the street improvement project as part of the mass grading plan.
- All areas disturbed during construction from Sta. 0+00 to Sta. 13+95 shall be seeded, mulched, and fertilized as follows (Permanent Seeding):  
Seed: Kansas Premium Fescue Blend: 8 lbs./1000 sq. ft.  
Mulch: Prairie Hay: 2 tons/acre  
Fertilizer: 12-24-12: 850 lbs./acre  
All costs associated with seeding, mulching, and fertilizing shall be included in bid item "Seeding". All seeding operations shall conform to City of Wichita Standard Specifications. All other areas will be seeded with Street/Mass Grading plan (separate project).
- All existing and proposed erosion control measures including silt fencing, erosion control mat, straw bales, inlet barriers, and const. entrance shall be maintained throughout construction by the contractor and until project is accepted by the City of Wichita. The on-site engineer shall complete weekly reports on the status of erosion control measures. The contractor shall be required to comply with maintenance and/or replacement of erosion control measures as determined by the on-site engineer until project is accepted by City of Wichita. Maintenance and/or replacement of erosion control measures to be paid by L.S. bid item "Site Restoration".
- All excess excavation shall remain on-site and shall be stockpiled or spread at a location determined by the engineer.
- The Contractor shall not begin work on the project until the Project Inspector is assigned and on site. Any work completed without inspection will be required to be uncovered for inspection at the Contractor's expense.

**AS BUILT PLANS**  
Contractor: Duling Construction  
Inspector: Fred Smith, Baughman Co.  
As Builts by: KEK, 1/25/18

T. Mason - City of Wichita, inspector  
Stubs & Risers  
Release Date: 2/8/2018  
pdf: 2/12/2018 apr

# SANITARY SEWER IMPROVEMENTS to serve TRINITY POINT CITY OF WICHITA, KANSAS

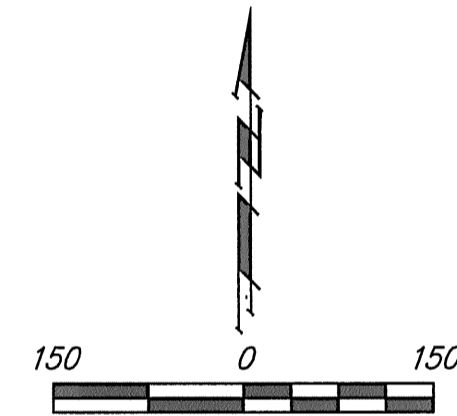
Gary Janzen, P.E. City Engineer  
Project Number  
2333 PPS (184011)



Vicinity Map

## Benchmarks

- BM #1: "□" Cut in face of curb inlet near SE corner of Lot 30, Block C, Gray's 5th Add. Elev. = 1297.86 NAVD88
- BM #2: "□" Cut in top of curb on east side of Flora, ±10' north of south property line of Gray's 5th Add. Elev. = 1302.40 NAVD88
- BM #3: "□" Cut in top of curb on east side of Flora, adjacent to common lot line of Lots 3&4, Block C, Gray's 5th Add. Elev. = 1305.32 NAVD88

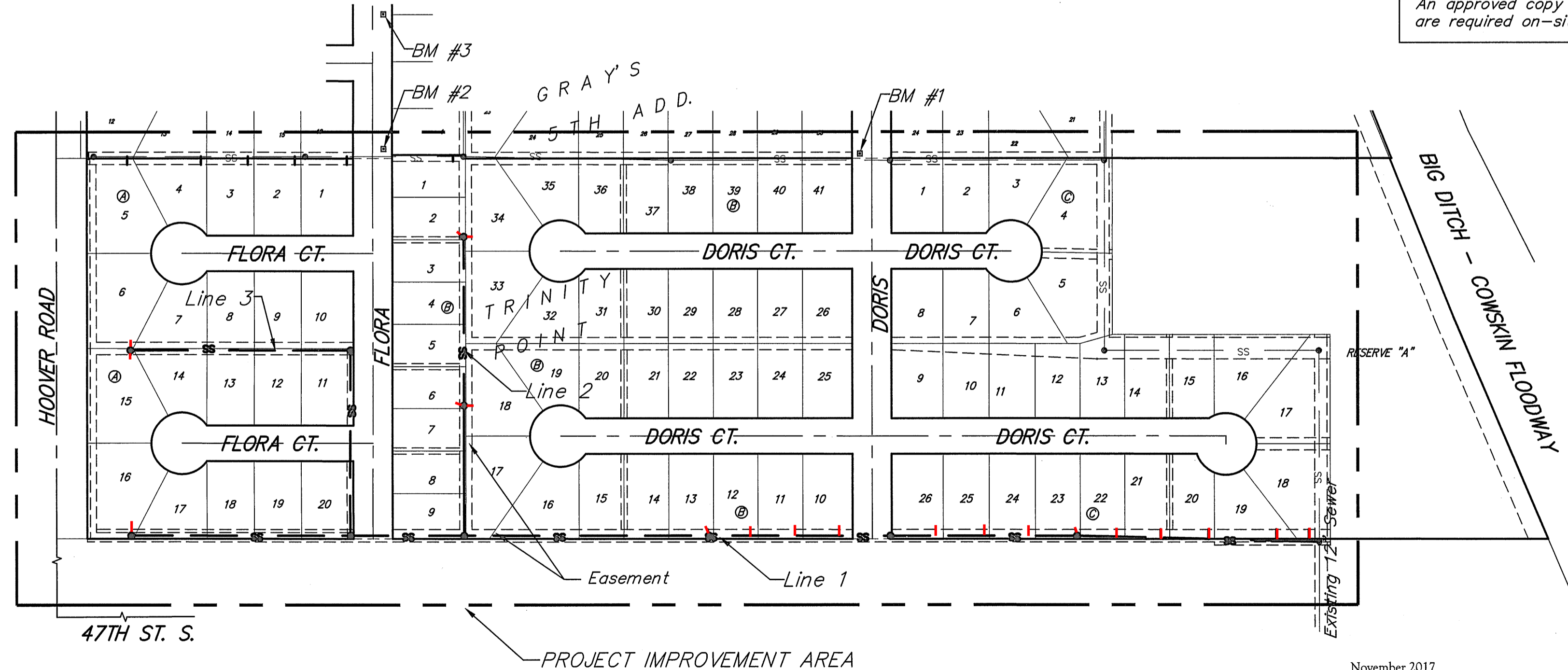


## Sheet Index

Title Sheet	1
Line 1	2-3
Line 2	4
Line 3	5
Additional Risers	6
Erosion Control/Grading Plan	7
Copy of Plat	8

SS Details SS-101, SS-102, SS-103 and Erosion Control Details available at City of Wichita web site at <http://www.wichita.gov/PWU/StandardsConstruction/Forms/WebPageStandardsConstruction.aspx>

APPROVED AS NOTED  
BY WICHITA PUBLIC WORKS  
ENGINEERING DIVISION  
Engineering *Johanne Kallman 11-9-17*  
Utilities *[Signature] 11-9-17*  
NOTE TO CONTRACTORS  
Inspection and testing for this project is to be provided by a Licensed Consulting Engineering Firm under contract with the Owner/Developer. Said inspection to be in accordance with the City of Wichita standard construction engineering practices and certified by a Licensed Professional Engineer in the state of Kansas. No work shall be performed by the Contractor without such inspection nor shall any work be commenced without written authorization by City Engineering. All Construction and Materials shall comply with the current City of Wichita Specifications and Standards and Special Provisions (on file and available at Wichita.gov).  
An approved copy of these plans signed by City staff are required on-site.







**BENCHMARKS:**

BM #1: "□" Cut in face of curb inlet near SE corner of Lot 30, Block C, Gray's 5th Add. Elev. = 1297.86 NAVD88

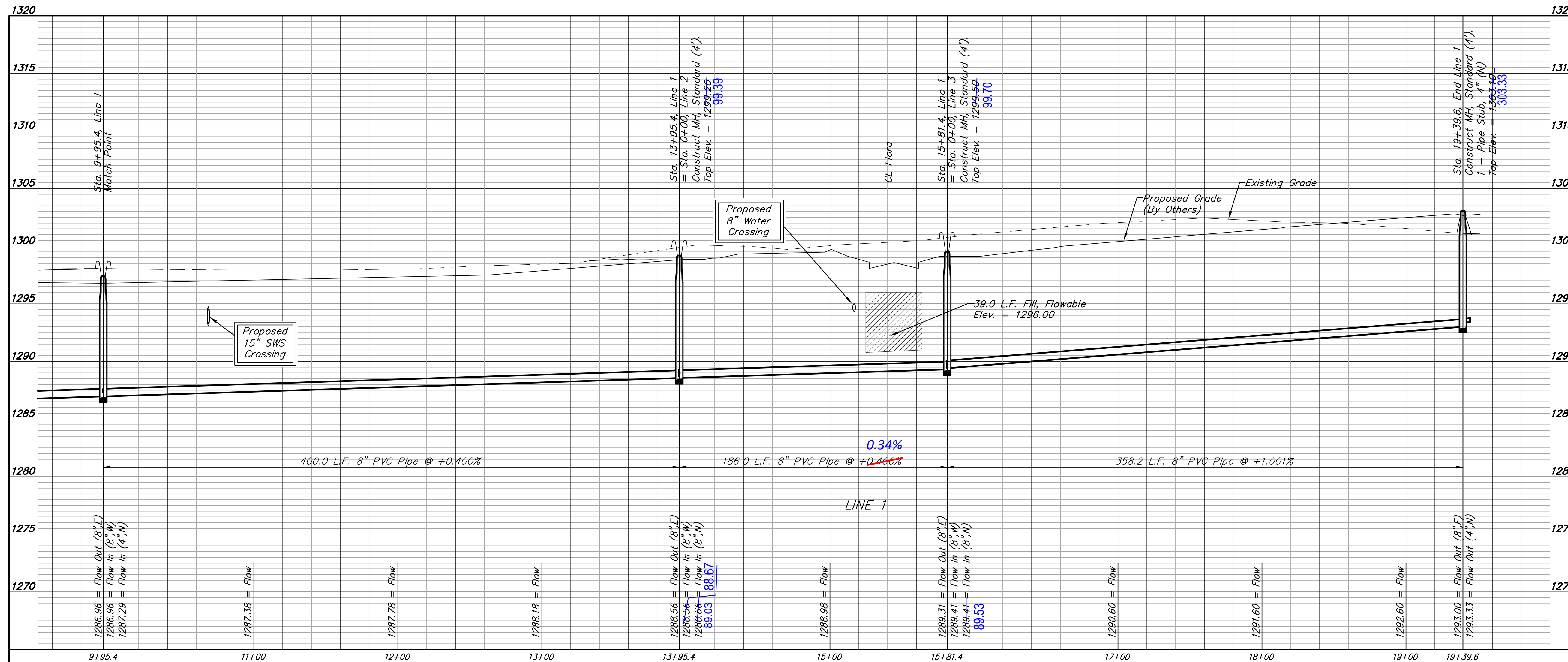
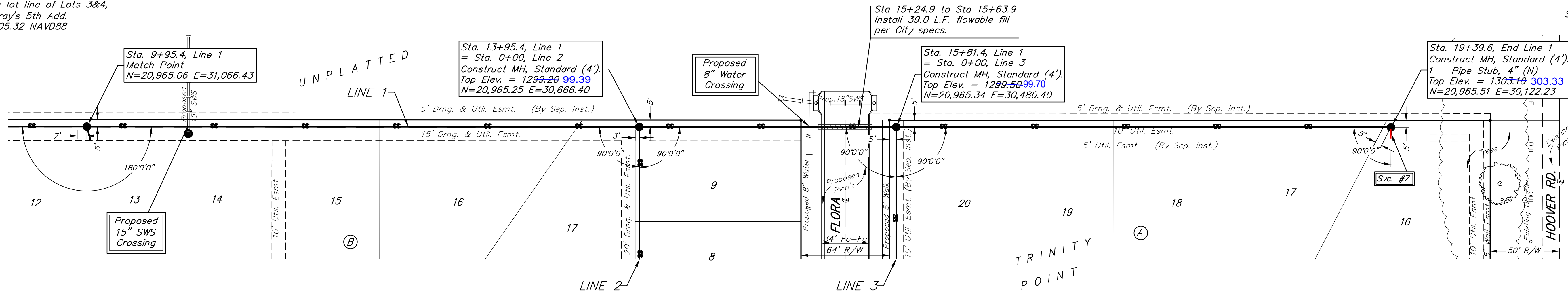
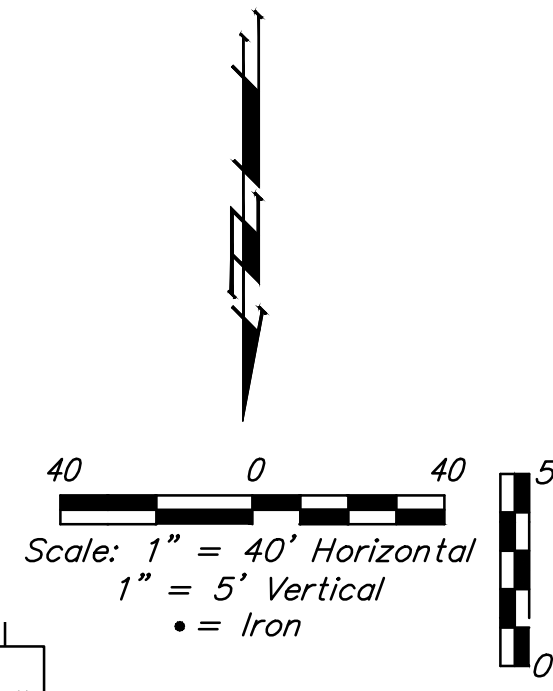
BM #2: "□" Cut in top of curb on east side of Flora, ±10' north of south property line of Gray's 5th Add. Elev. = 1302.40 NAVD88

BM #3: "□" Cut in top of curb on east side of Flora, adjacent to common lot line of Lots 3&4, Block C, Gray's 5th Add. Elev. = 1305.32 NAVD88

**SEWER SERVICE TABLE**

NUMBER	TYPE	LOCATION			FOR INFORMATION ONLY	
		LOT NO.	BLOCK NO.	LINE NO.	STATION \ DIRECTION	APPROXIMATE LENGTH 4" PIPE
7	4" Stub	16	A	1	19+39.6/Rt.	5'

NOTE: Vertical Riser Pipe shall be extended to 2' minimum above ground water elevation and 4' maximum below proposed ground elevation.



**BENCHMARKS:**

BM #1: "□" Cut in face of curb inlet near SE corner of Lot 30, Block C, Gray's 5th Add. Elev. = 1297.86 NAVD88

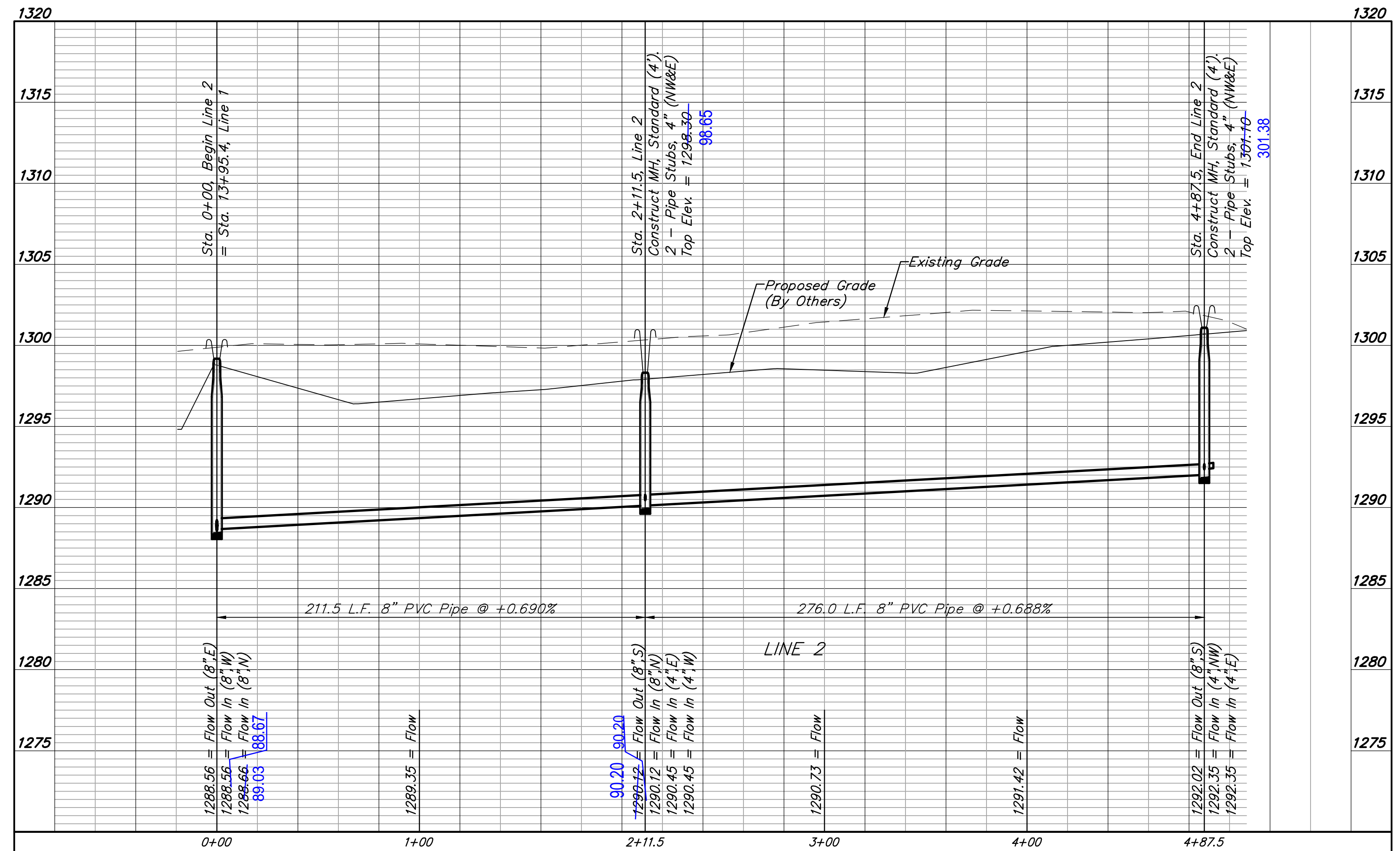
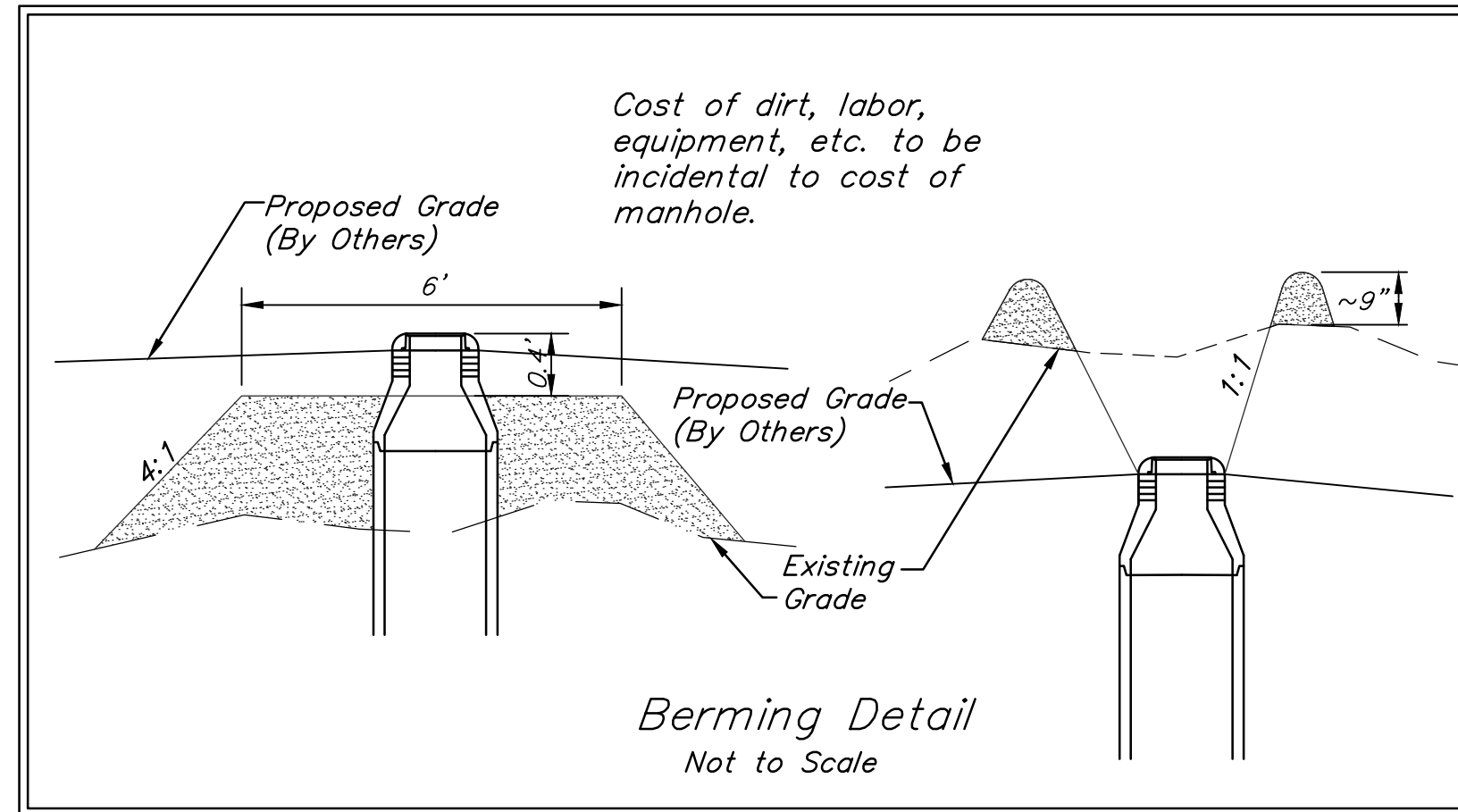
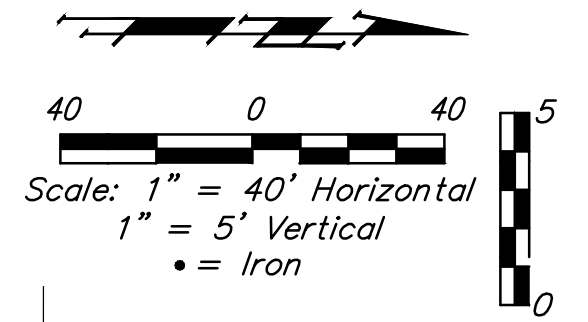
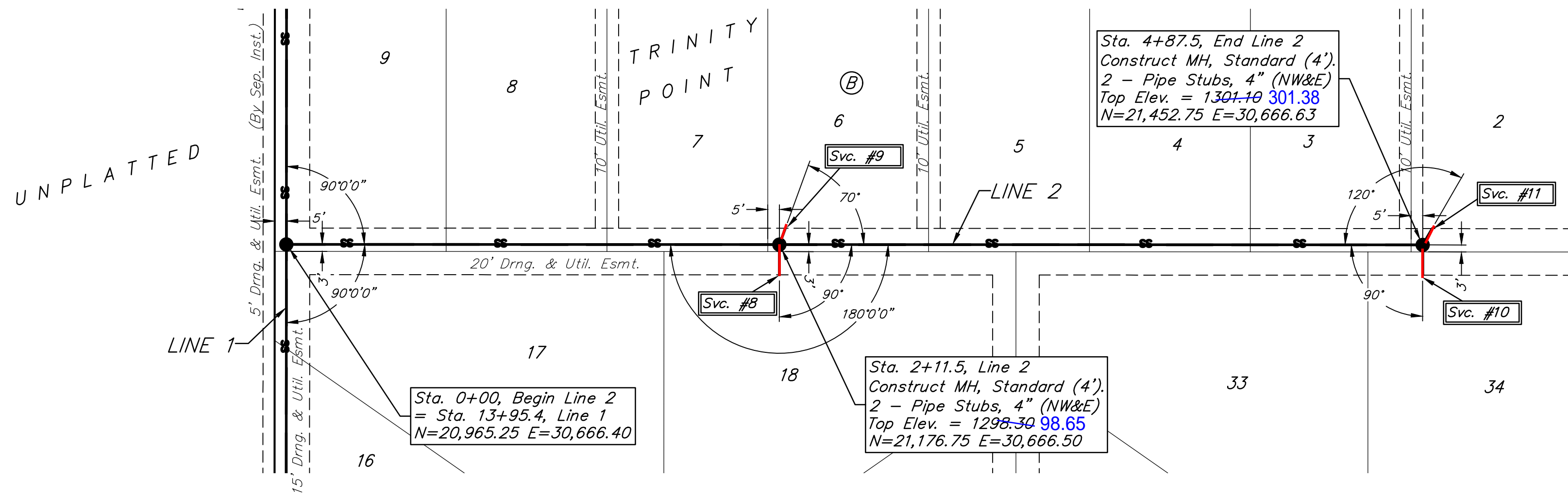
BM #2: "□" Cut in top of curb on east side of Flora, ±10' north of south property line of Gray's 5th Add. Elev. = 1302.40 NAVD88

BM #3: "□" Cut in top of curb on east side of Flora, adjacent to common lot line of Lots 3&4, Block C, Gray's 5th Add. Elev. = 1305.32 NAVD88

**SEWER SERVICE TABLE**

NUMBER	TYPE	LOCATION			STATION \ DIRECTION	FOR INFORMATION ONLY	
		LOT NO.	BLOCK NO.	LINE NO.		APPROXIMATE LENGTH 4" PIPE	VERTICAL
8	4" Stub	18	B	2	2+11.5/Rt.	-	13'
9	4" Stub	6	B	2	2+11.5/Lt.	-	7'
10	4" Stub	34	B	2	4+87.5/Rt.	-	13'
11	4" Stub	2	B	2	4+87.5/Lt.	-	7'

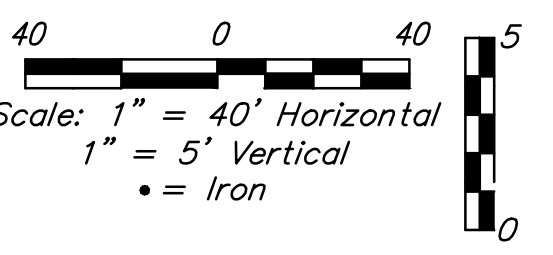
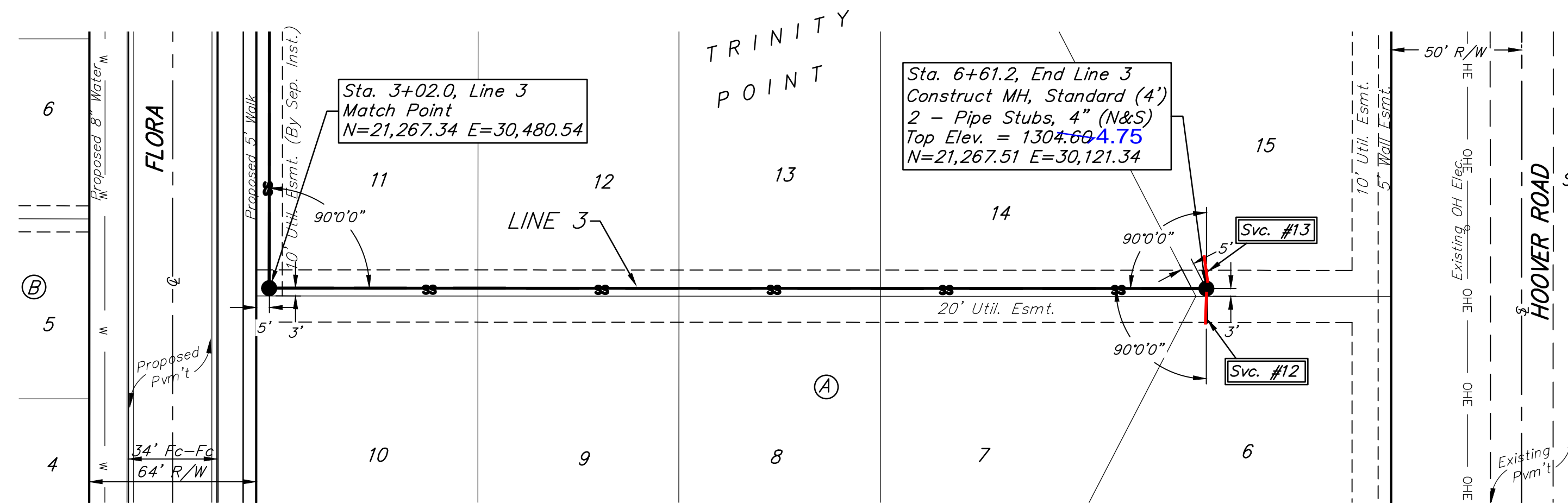
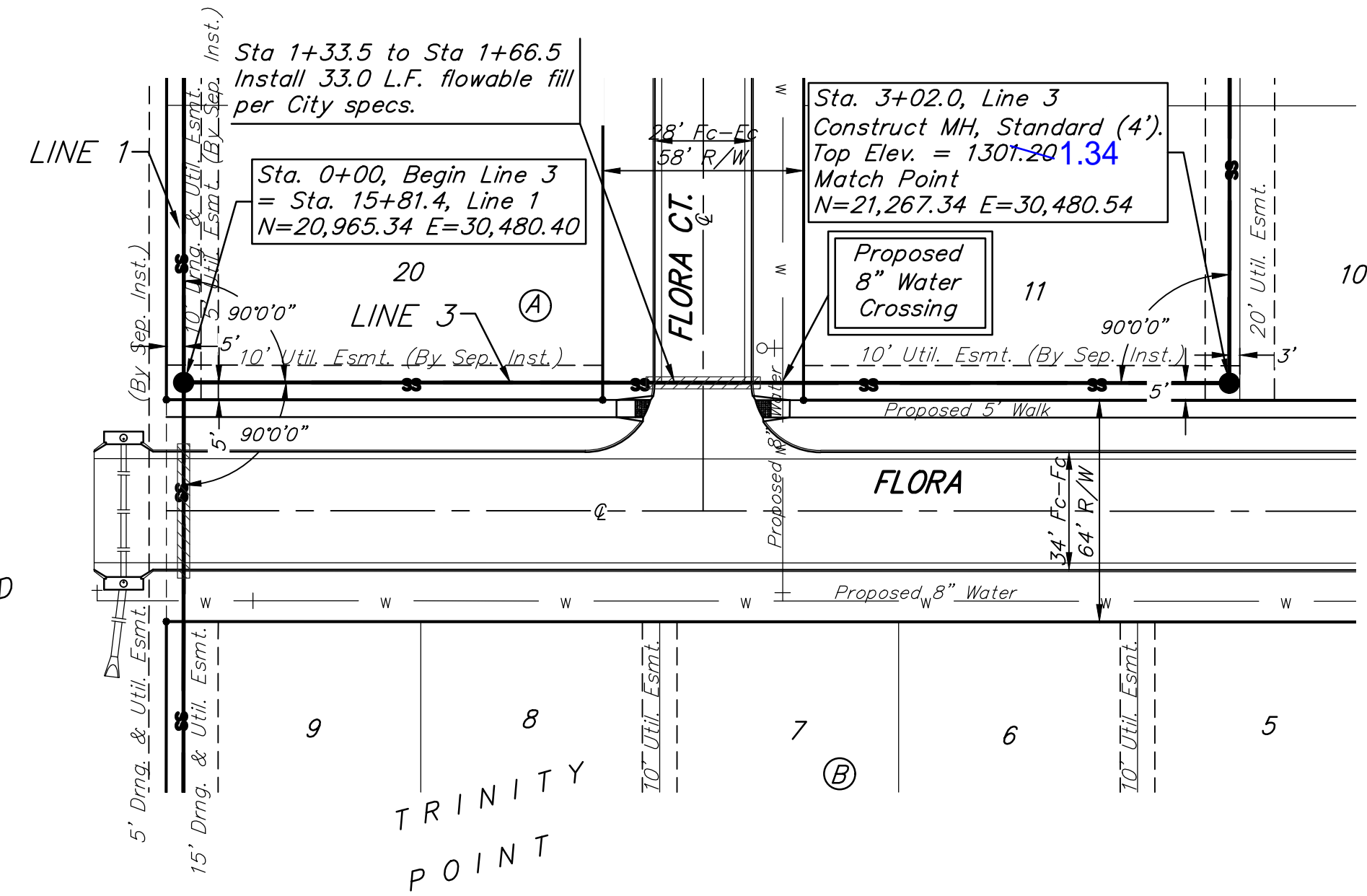
NOTE: Vertical Riser Pipe shall be extended to 2' minimum above ground water elevation and 4' maximum below proposed ground elevation.



**BENCHMARKS:**  
 BM #1: "□" Cut in face of curb inlet near SE corner of Lot 30, Block C, Gray's 5th Add. Elev. = 1297.86 NAVD88

BM #2: "□" Cut in top of curb on east side of Flora, ±10' north of south property line of Gray's 5th Add. Elev. = 1302.40 NAVD88

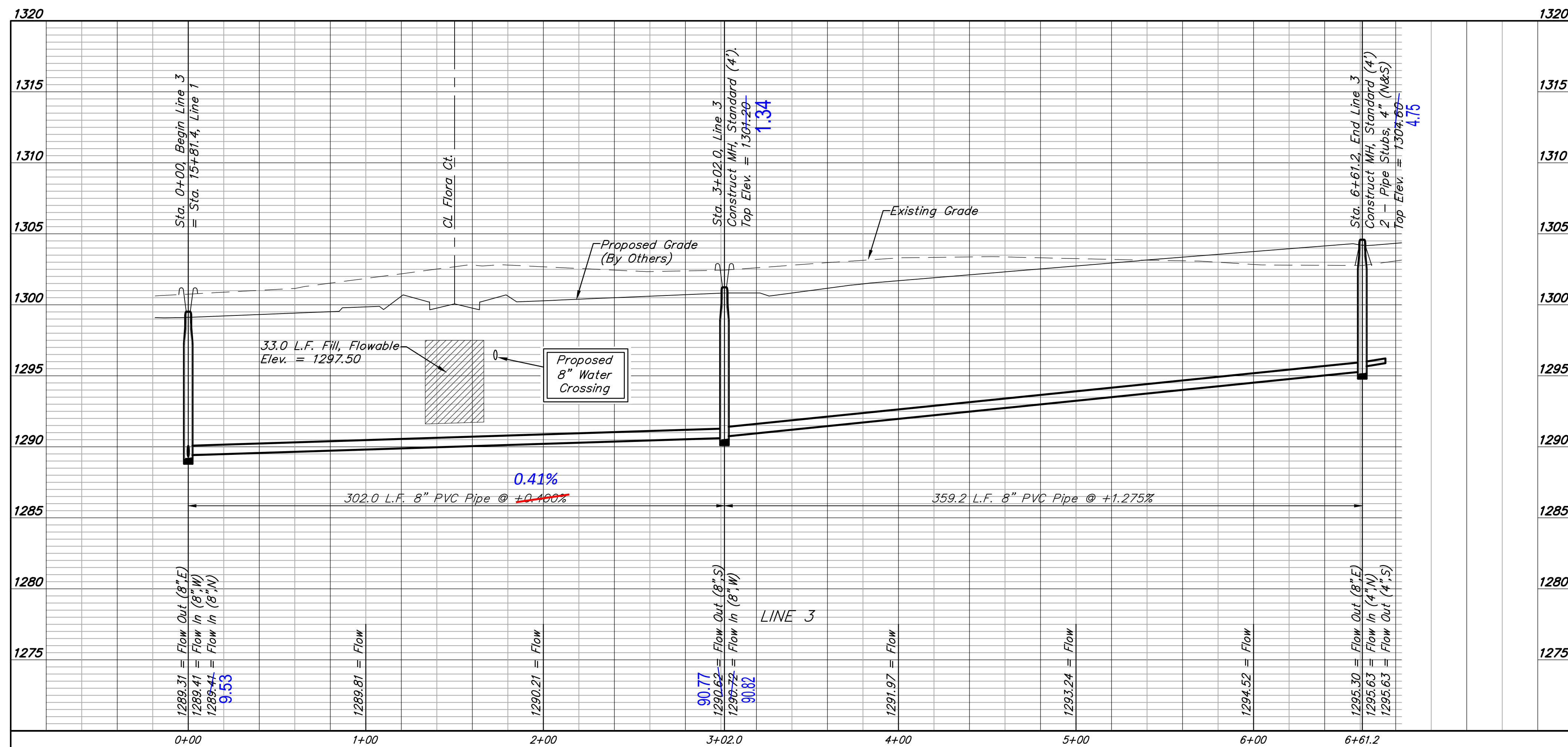
BM #3: "□" Cut in top of curb on east side of Flora, adjacent to common lot line of Lots 3&4, Block C, Gray's 5th Add. Elev. = 1305.32 NAVD88



**SEWER SERVICE TABLE**

NUMBER	TYPE	LOCATION			FOR INFORMATION ONLY	
		LOT NO.	BLOCK NO.	LINE NO.	STATION DIRECTION	APPROXIMATE LENGTH 4" PIPE VERTICAL HORIZONTAL
12	4" Stub	15	A	3	6+61.2/Rt.	- 13.0'
13	4" Stub	6	A	3	6+61.2/Lt.	- 7.0'

NOTE: Vertical Riser Pipe shall be extended to 2' minimum above ground water elevation and 4' maximum below proposed ground elevation.



**BENCHMARKS:**

BM #1: "□" Cut in face of curb inlet near SE corner of Lot 30, Block C, Gray's 5th Add. Elev. = 1297.86 NAVD88

BM #2: "□" Cut in top of curb on east side of Flora, ±10' north of south property line of Gray's 5th Add. Elev. = 1302.40 NAVD88

BM #3: "□" Cut in top of curb on east side of Flora, adjacent to common lot line of Lots 3&4, Block C, Gray's 5th Add. Elev. = 1305.32 NAVD88

These services are to be installed privately by Brand Plumbing at a later date

**SEWER SERVICE TABLE**

NUMBER	TYPE	LOCATION				FOR INFORMATION ONLY	
		LOT NO.	BLOCK NO.	LINE NO.	STATION \ DIRECTION	APPROXIMATE LENGTH 4" PIPE VERTICAL	HORIZONTAL
14	4" Saddle Tap	1	B	-	-	-	7.7'
15	4" Saddle Tap	1	A	-	-	-	13'
16	4" Saddle Tap	2	A	-	-	-	13'
17	4" Saddle Tap	3	A	-	-	-	13'
18	4" Saddle Tap	4	A	-	-	-	13'
19	4" Saddle Tap	5	A	-	-	-	13'

NOTE: Vertical Riser Pipe shall be extended to 2' minimum above ground water elevation and 4' maximum below proposed ground elevation.

Any areas disturbed by construction within Gray's 5th Addition shall be sodded with like grass. Cost of sodding is included in lump sum bid item "Sodding".

