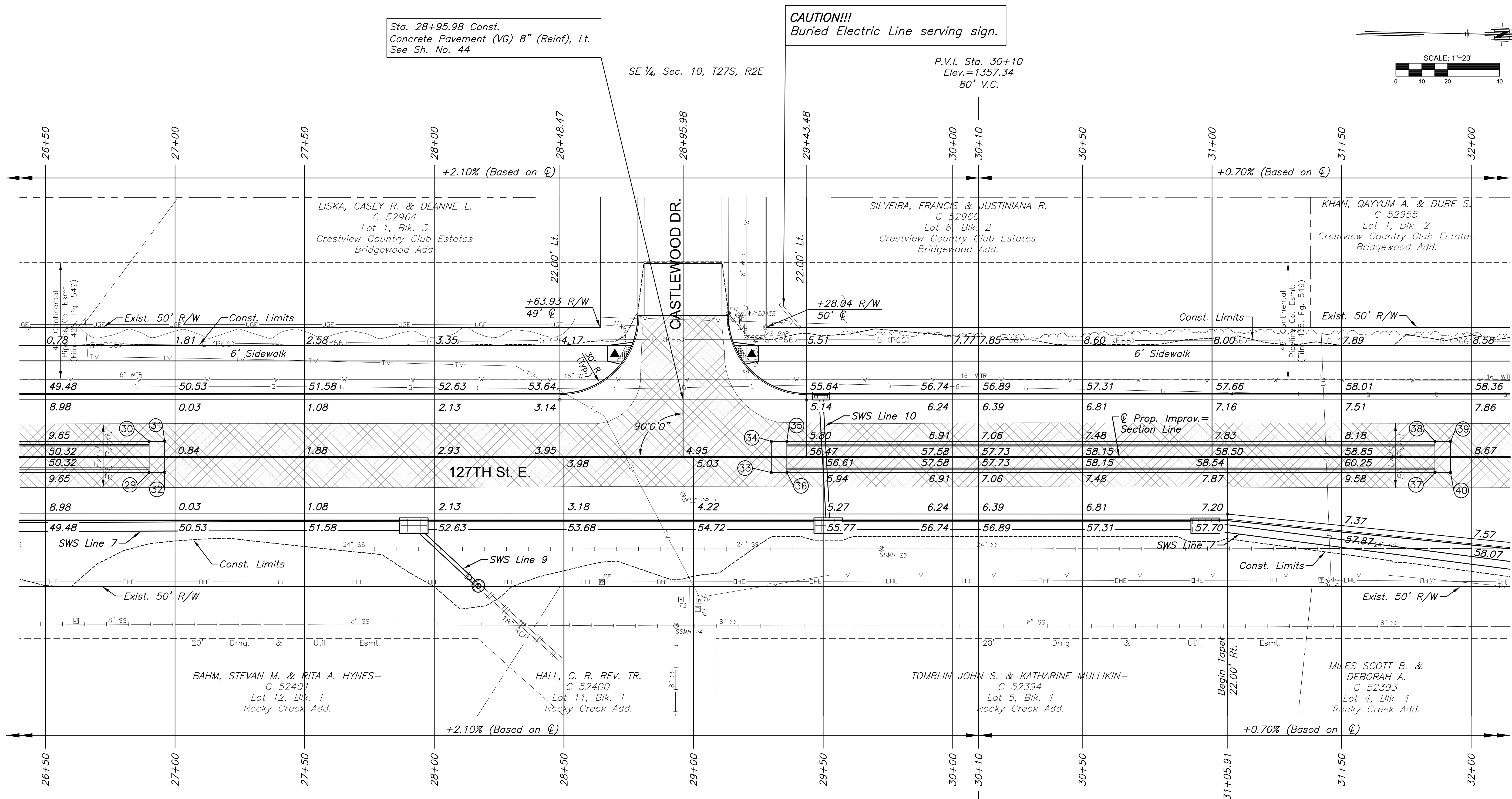
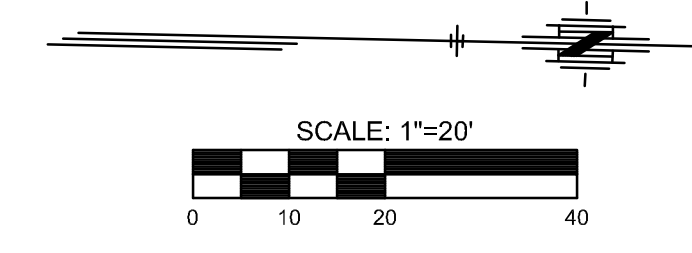


STATE	PROJECT NO.	YEAR	SHEET NO.	TOTAL SHEETS
KANSAS	87 N-0615-01	2017	8	183



STREET IMPROVEMENTS FOR
127TH STREET EAST
 FROM 13TH STREET NORTH TO 21ST STREET NORTH

©2017 MKEC Engineering
 All Rights Reserved
 www.mkec.com
 These drawings and their contents, including, but not limited to, all concepts, designs, & ideas are the exclusive property of MKEC Engineering (MKEC), and may not be used or reproduced in any way without the express consent of MKEC.

PAVING PLAN
 STA. 26+50 TO
 STA. 32+00

PROJECT NO.	472-85158
DATE	11/29/17
SCALE	1"=20'
DESIGNED	JRA
DRAWN	WNJ
CHECKED	JRA

NO.	REVISION	DATE

SHEET NO. 8 OF 183

PLOTTED: Wednesday, November 29, 2017 @ 02:18PM
 J:\PROJECTS\2017\1401040290 - COM_127THE_13TH TO 21ST\05-CIVIL\CAO\PAV\428\BEM4.DWG

POINT NO.	STATION	OFFSET	TOP CURB ELEVATION	FLOWLINE ELEVATION
29	26+90.00	6.00' Rt.	1351.15	1350.48
30	26+90.00	6.00' Lt.	1351.15	1350.48
31	26+96.00	6.00' Lt.	1350.61	1350.61
32	26+96.00	6.00' Rt.	1350.61	1350.61
33	29+30.00	6.00' Rt.	1355.52	1355.52
34	29+30.00	6.00' Lt.	1355.52	1355.52
35	29+36.00	6.00' Lt.	1356.31	1355.64
36	29+36.00	6.00' Rt.	1356.31	1355.64
37	31+86.00	6.00' Rt.	1359.10	1358.43
38	31+86.00	6.00' Lt.	1359.10	1358.43
39	31+92.00	6.00' Lt.	1358.47	1358.47
40	31+92.00	6.00' Rt.	1358.47	1358.47

BM#4 Chiseled square on top of curb in front of FH at the NW cor. of 127th Street North & Castlewood Dr.
 Sta. 29+13.45, 55.14' Lt., Elev.=1354.405 (NAVD 88)

STATION	OFFSET	EXIST. ELEV.	PROP. ELEV.	REMARKS
29+20.33	32.98' LT.		1354.49	VALVE BOX ADJUSTED

- LEGEND**
- Pavement Removal
 - Construct Wheelchair Ramp See Sh. No. 53
 - Tree Removal
 - Tree Row Removal
 - Tree Area Removal Boundary
 - Storm Sewer Removal