

STATE	PROJECT NO.	YEAR	SHEET NO.	TOTAL SHEETS
KANSAS	87 N-0615-01	2017	24	183



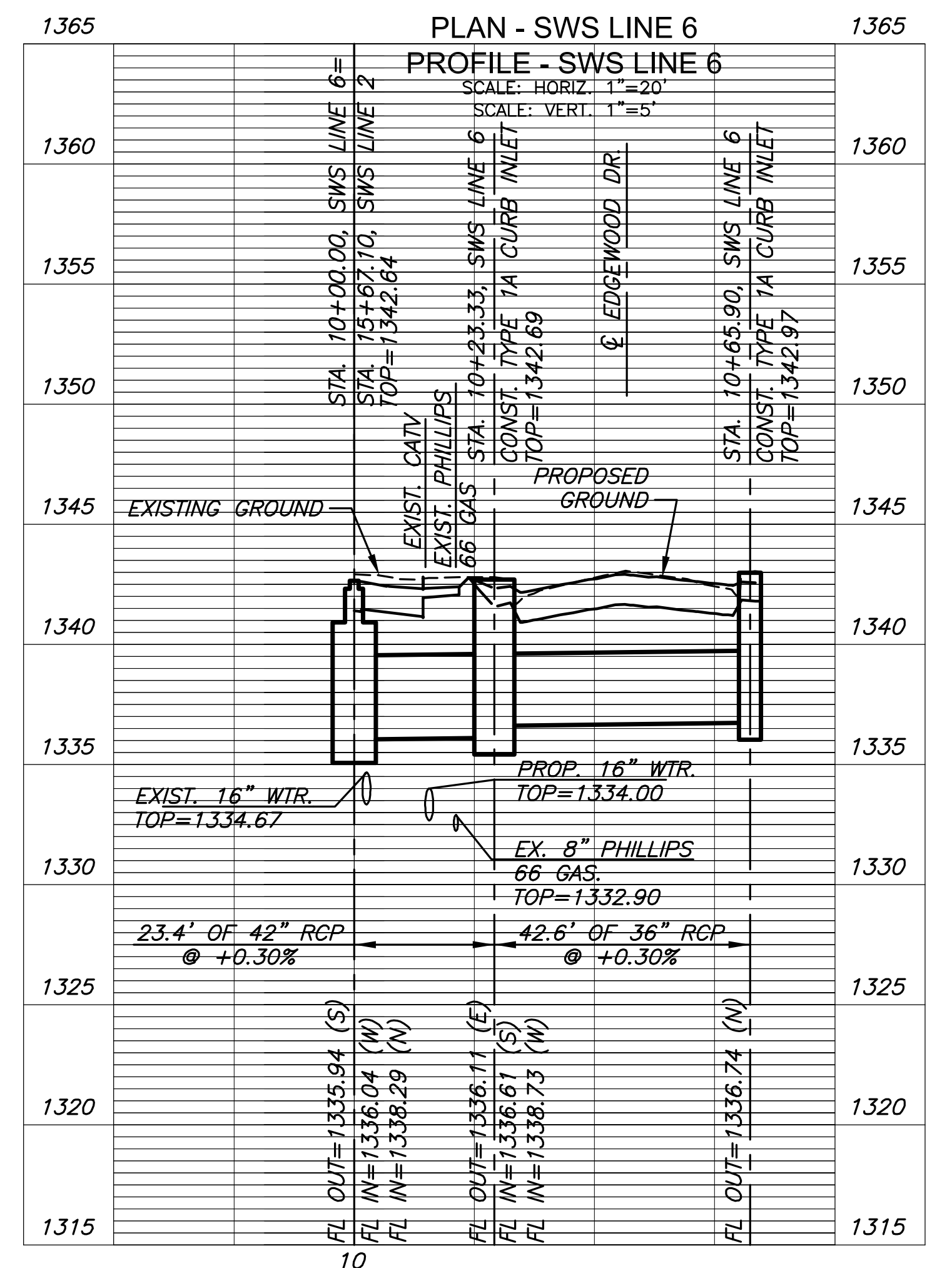
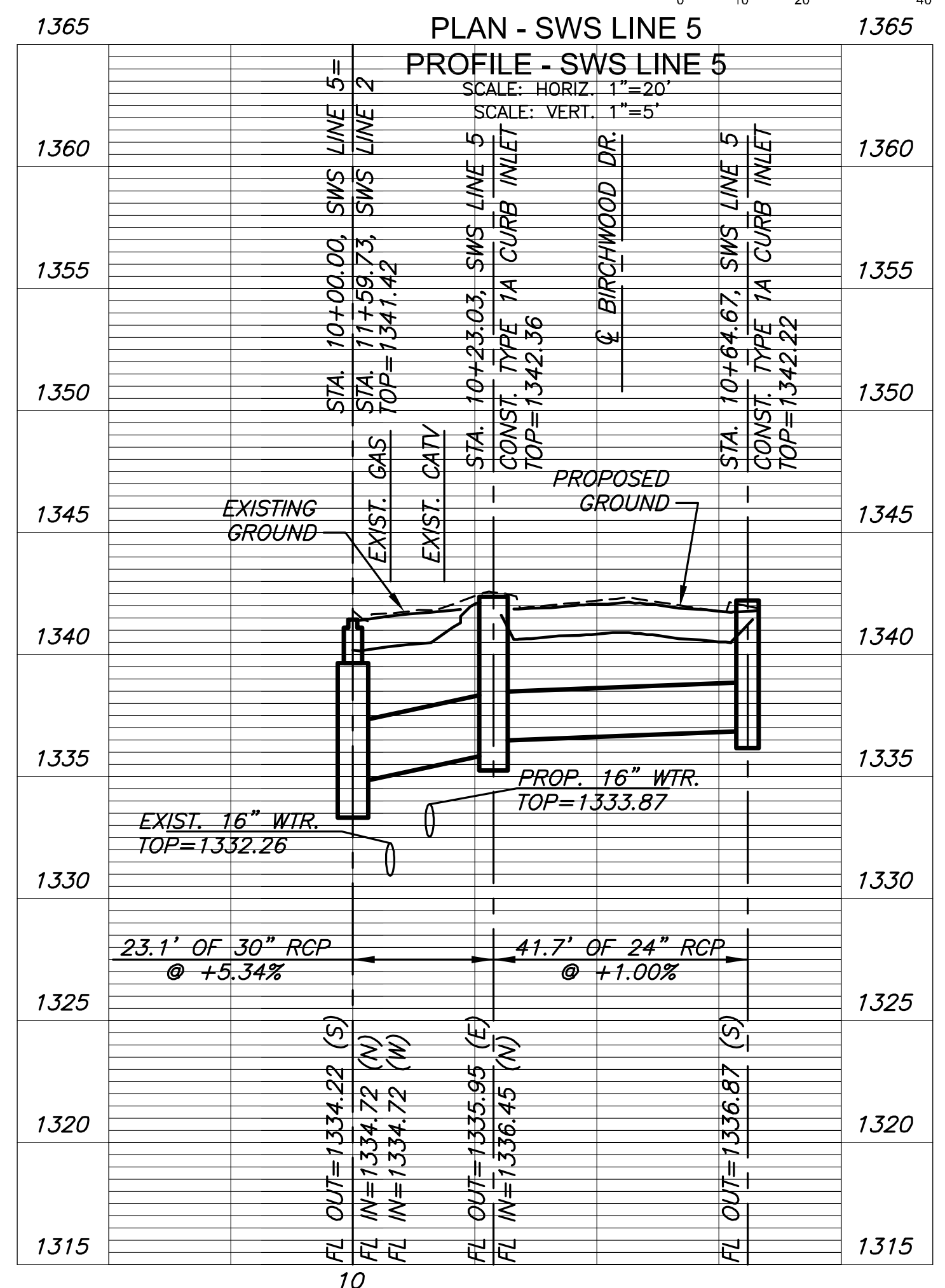
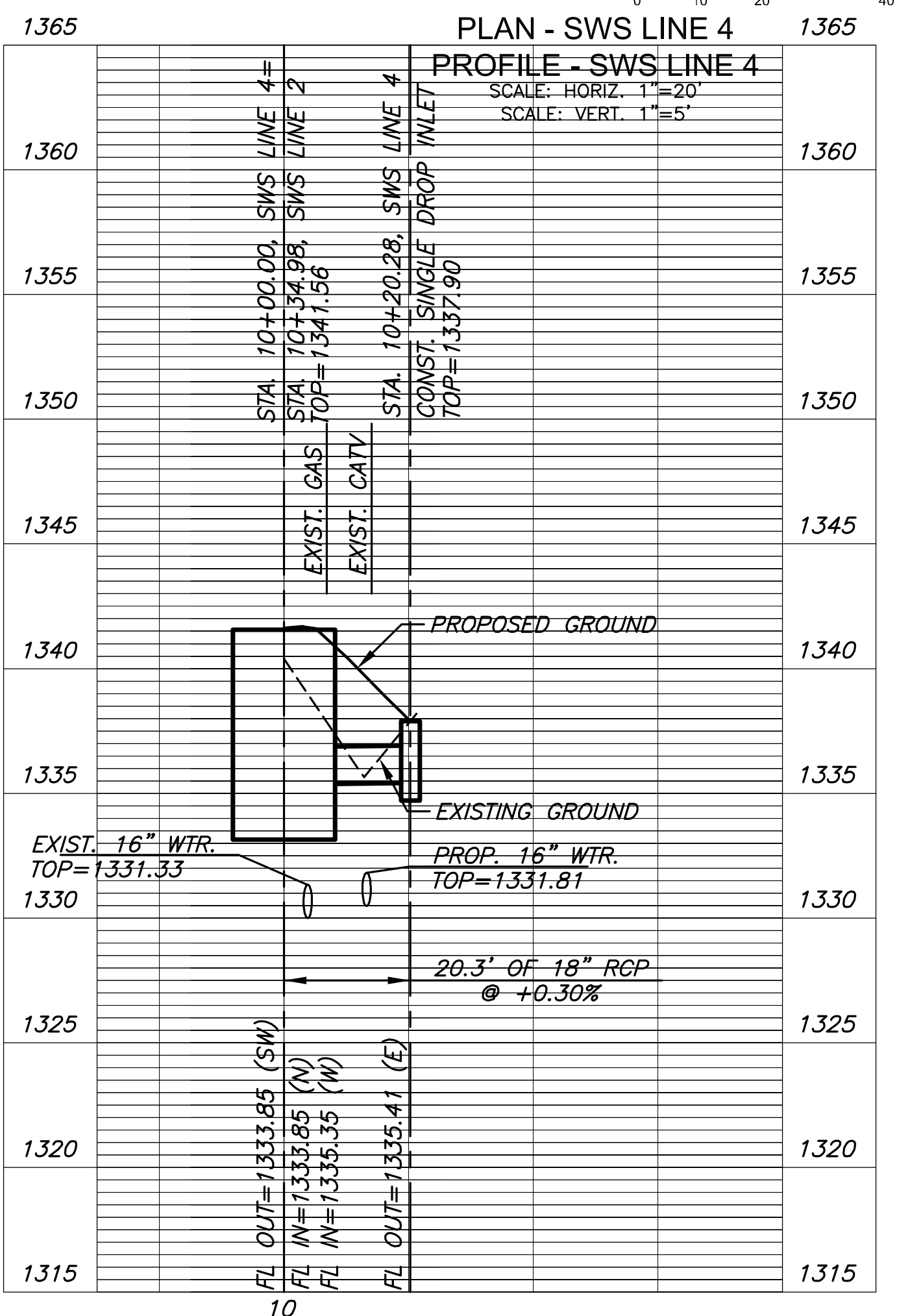
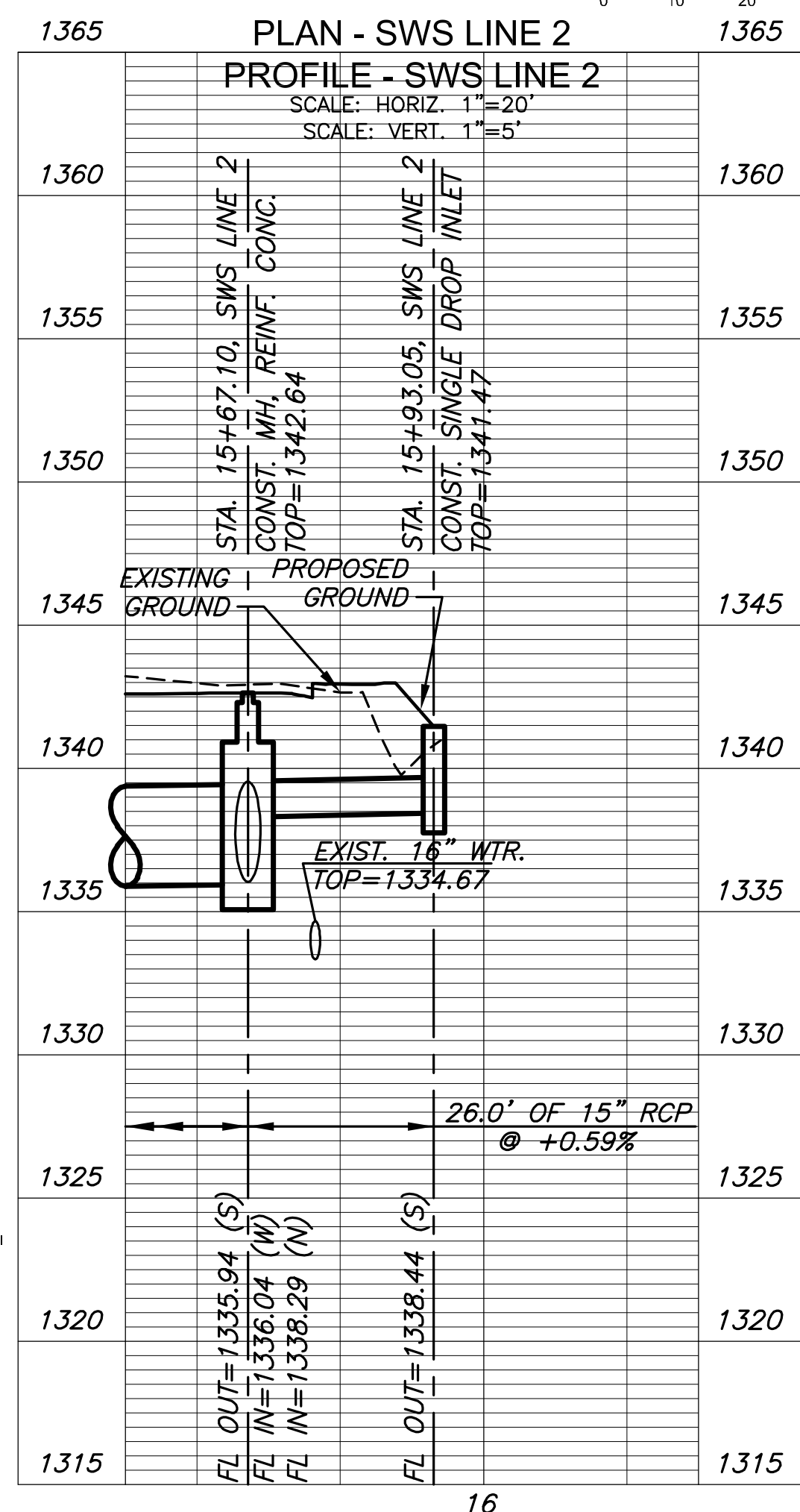
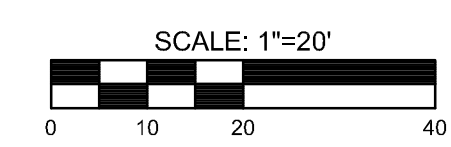
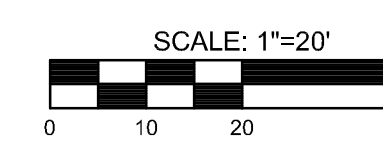
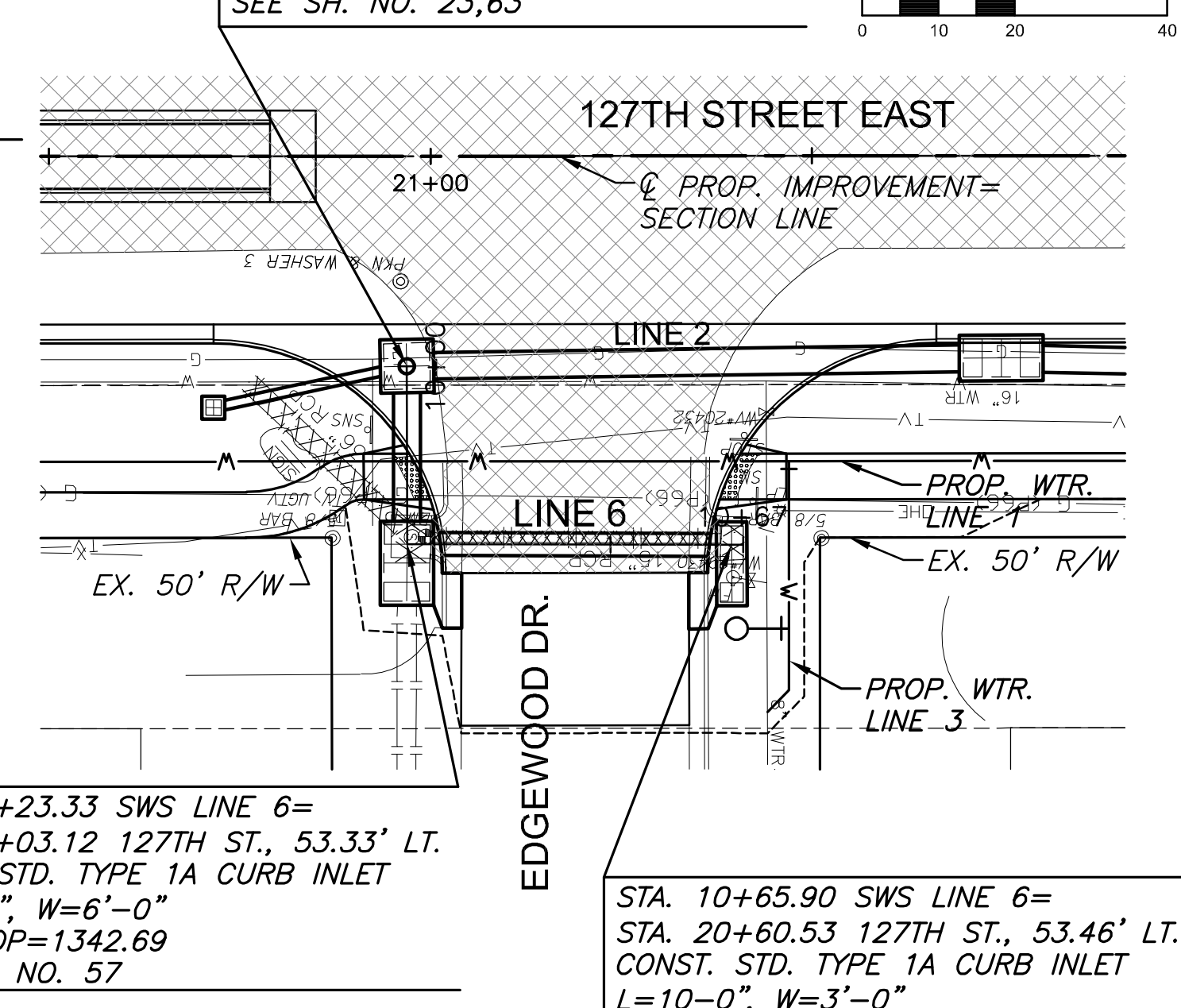
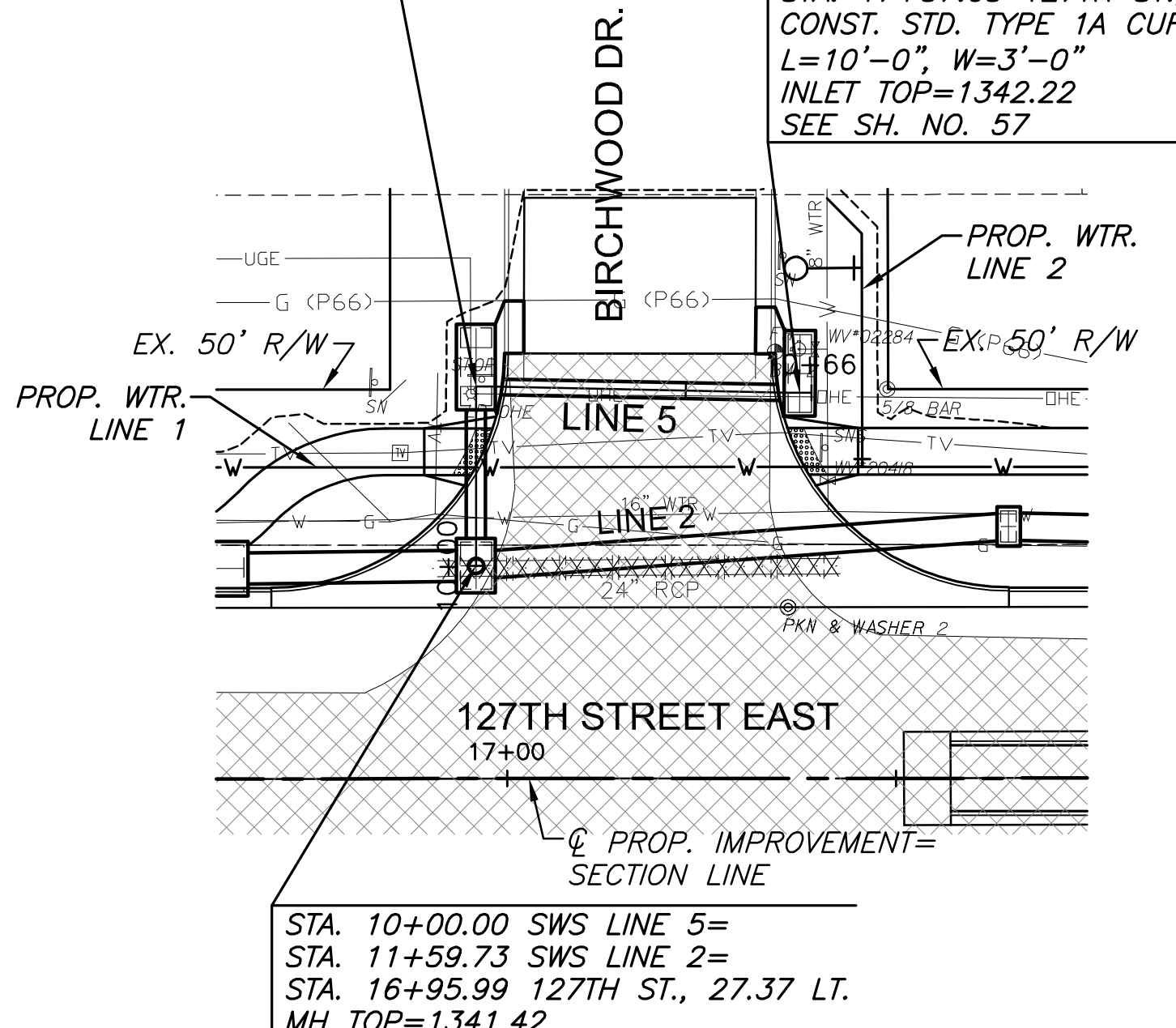
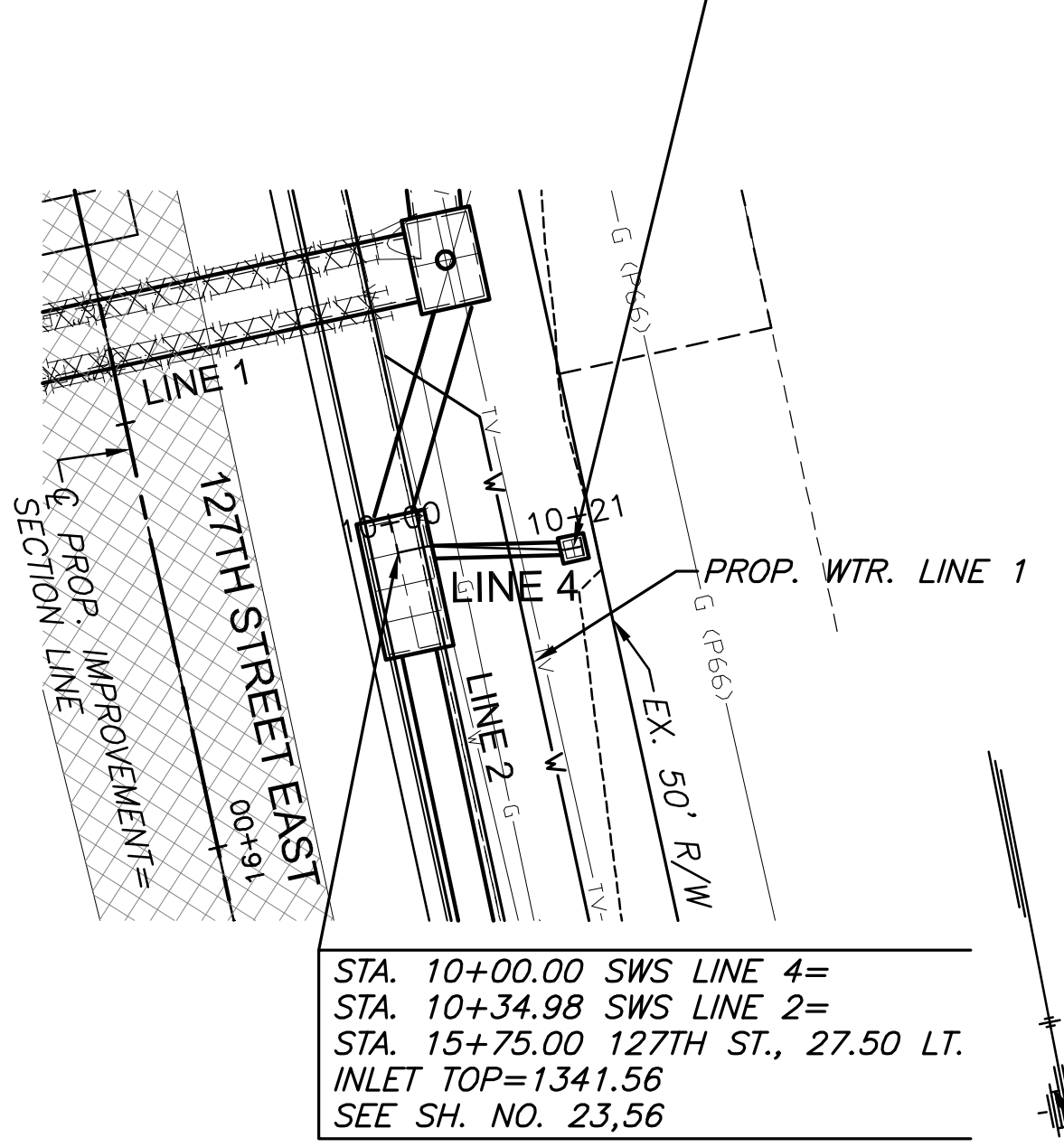
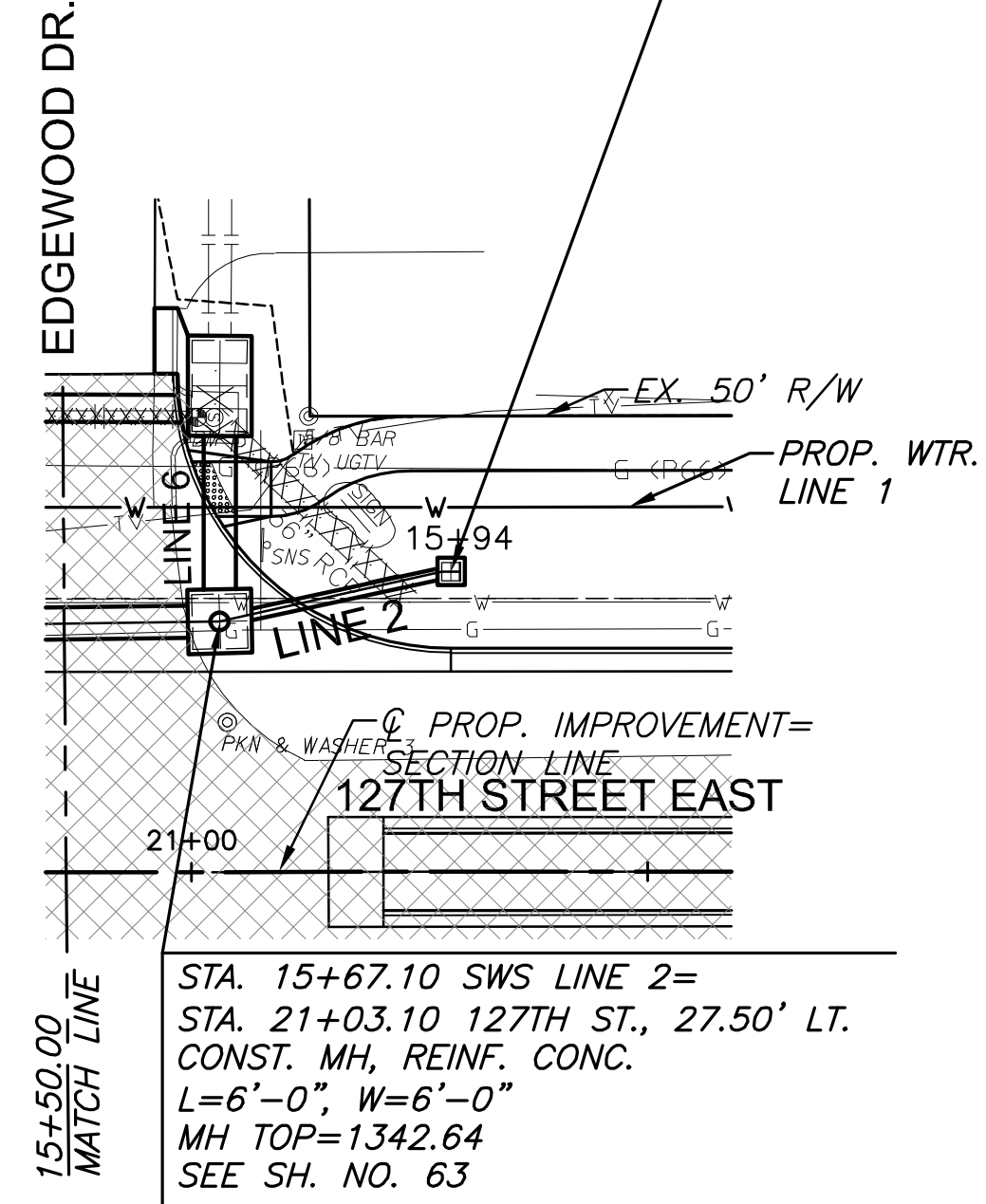
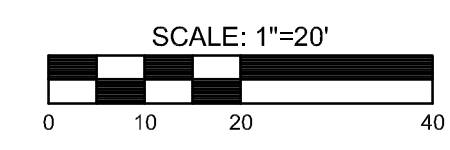
STA. 15+93.05 SWS LINE 2=
STA. 21+28.46 127TH ST., 32.94' LT.
CONST. SINGLE DROP INLET W/9" APRON
L=2'-0", W=2'-0"
INLET TOP=1341.47
SEE SH. NO. 60

STA. 10+20.28 SWS LINE 2=
STA. 15+75.00 127TH ST., 47.33' LT.
CONST. SINGLE DROP INLET W/9" APRON
L=2'-0", W=2'-0"
INLET TOP=1337.90
SEE SH. NO. 60

STA. 10+23.03 SWS LINE 5=
STA. 16+96.01 127TH ST., 50.39' LT.
CONST. STD. TYPE 1A CURB INLET
L=10'-0", W=4'-0"
INLET TOP=1342.36
SEE SH. NO. 57

STA. 10+64.67 SWS LINE 5=
STA. 17+37.65 127TH ST., 49.52' LT.
CONST. STD. TYPE 1A CURB INLET
L=10'-0", W=3'-0"
INLET TOP=1342.22
SEE SH. NO. 57

STA. 10+00.00 SWS LINE 6=
STA. 15+67.10 SWS LINE 2=
STA. 21+03.10 127TH ST., 27.50' LT.
MH TOP=1342.64
SEE SH. NO. 23,63



STREET IMPROVEMENTS FOR

127TH STREET EAST

FROM 13TH STREET NORTH TO 21ST STREET NORTH

©2017 MKEC Engineering All Rights Reserved
These drawings and their contents, including, but not limited to, all concepts, designs, & ideas are the exclusive property of MKEC Engineering (MKEC), and may not be used or reproduced in any way without the express consent of MKEC.

"STORM SEWER PLAN & PROFILE LINES 2, 4, 5, & 6"

PROJECT NO.	472-85158	
DATE	11/29/17	
SCALE	1"=20'	
DESIGNED	JRA	
DRAWN	WNJ	
CHECKED	JRA	
NO.	REVISION	DATE

SHEET NO. 24 OF 183