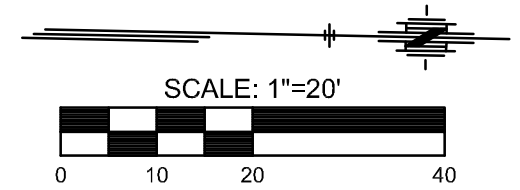
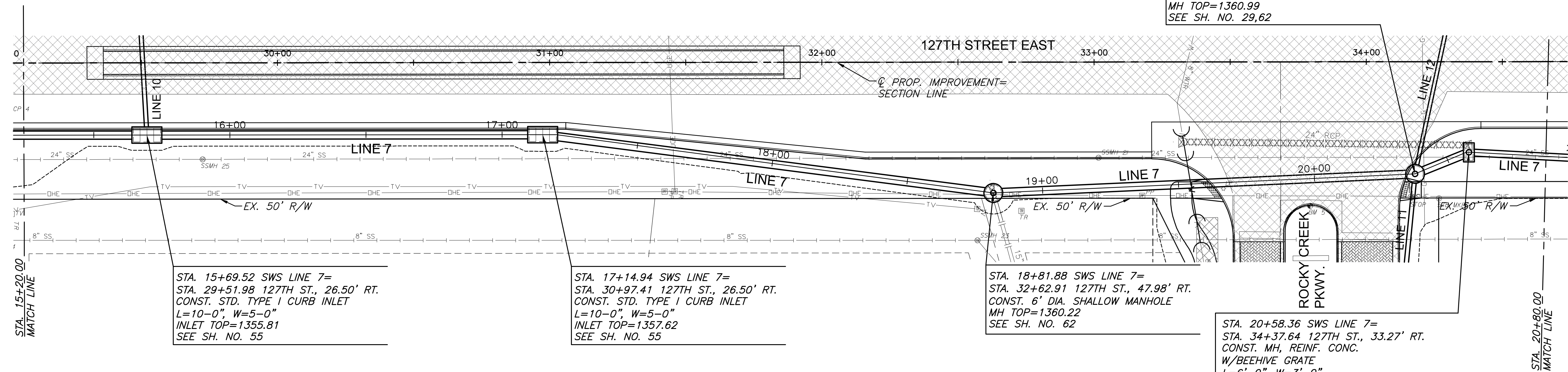


J:\PROJECTS\2017\1401040290 - COM_127TH E - 13TH TO 21ST STS - CIVIL\LOADS\SWS\14290PRG.DWG
 PLOTTED: Wednesday, November 29, 2017 @ 02:30PM

STATE	PROJECT NO.	YEAR	SHEET NO.	TOTAL SHEETS
KANSAS	87 N-0615-01	2017	26	183



STA. 20+36.99 SWS LINE 7=
 STA. 34+17.88 127TH ST., 41.19' RT.
 CONST. 6' DIA. SHALLOW MANHOLE
 MH TOP=1360.99
 SEE SH. NO. 29,62



STA. 15+69.52 SWS LINE 7=
 STA. 29+51.98 127TH ST., 26.50' RT.
 CONST. STD. TYPE I CURB INLET
 L=10'-0", W=5'-0"
 INLET TOP=1355.81
 SEE SH. NO. 55

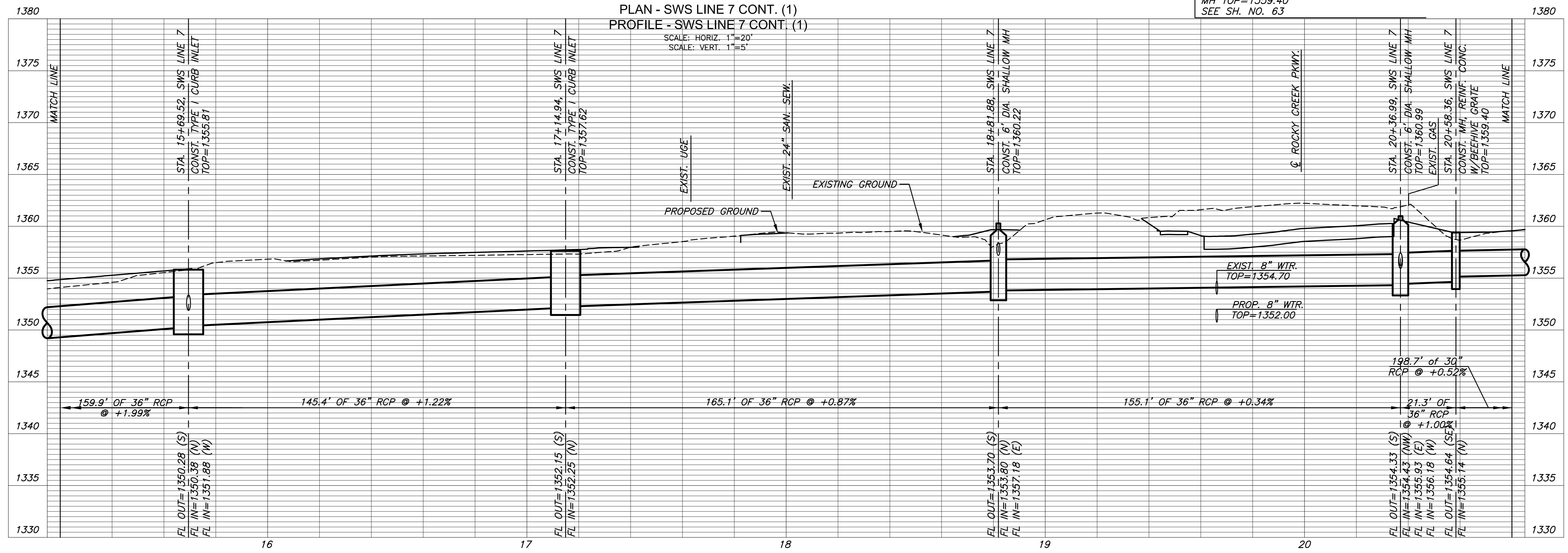
STA. 17+14.94 SWS LINE 7=
 STA. 30+97.41 127TH ST., 26.50' RT.
 CONST. STD. TYPE I CURB INLET
 L=10'-0", W=5'-0"
 INLET TOP=1357.62
 SEE SH. NO. 55

STA. 18+81.88 SWS LINE 7=
 STA. 32+62.91 127TH ST., 47.98' RT.
 CONST. 6' DIA. SHALLOW MANHOLE
 MH TOP=1360.22
 SEE SH. NO. 62

STA. 20+58.36 SWS LINE 7=
 STA. 34+37.64 127TH ST., 33.27' RT.
 CONST. MH, REINF. CONC.
 W/BEEHIVE GRATE
 L=6'-0", W=3'-0"
 MH TOP=1359.40
 SEE SH. NO. 63

PLAN - SWS LINE 7 CONT. (1)
 PROFILE - SWS LINE 7 CONT. (1)

SCALE: HORIZ. 1"=20'
 SCALE: VERT. 1"=5'



FL OUT=1350.28 (S)
 FL IN=1350.38 (N)
 FL IN=1351.88 (W)

FL OUT=1352.15 (S)
 FL IN=1352.25 (N)

FL OUT=1353.70 (S)
 FL IN=1353.80 (N)
 FL IN=1357.18 (E)

FL OUT=1354.33 (S)
 FL IN=1354.43 (NW)
 FL IN=1355.93 (E)
 FL IN=1356.18 (W)
 FL OUT=1354.64 (SE)
 FL IN=1355.14 (N)

STREET IMPROVEMENTS FOR

127TH STREET EAST

FROM 13TH STREET NORTH TO 21ST STREET NORTH

©2017 MKEC Engineering
 All Rights Reserved
 www.mkec.com
 These drawings and their contents, including, but not limited to, all concepts, designs, & ideas are the exclusive property of MKEC Engineering (MKEC), and may not be used or reproduced in any way without the express consent of MKEC.

STORM SEWER PLAN & PROFILE LINE 7 CONT.

PROJECT NO.	472-85158	
DATE	11/29/17	
SCALE	1"=20'	
DESIGNED	JRA	
DRAWN	WNJ	
CHECKED	JRA	
NO.	REVISION	DATE

SHEET NO. 26 OF 183