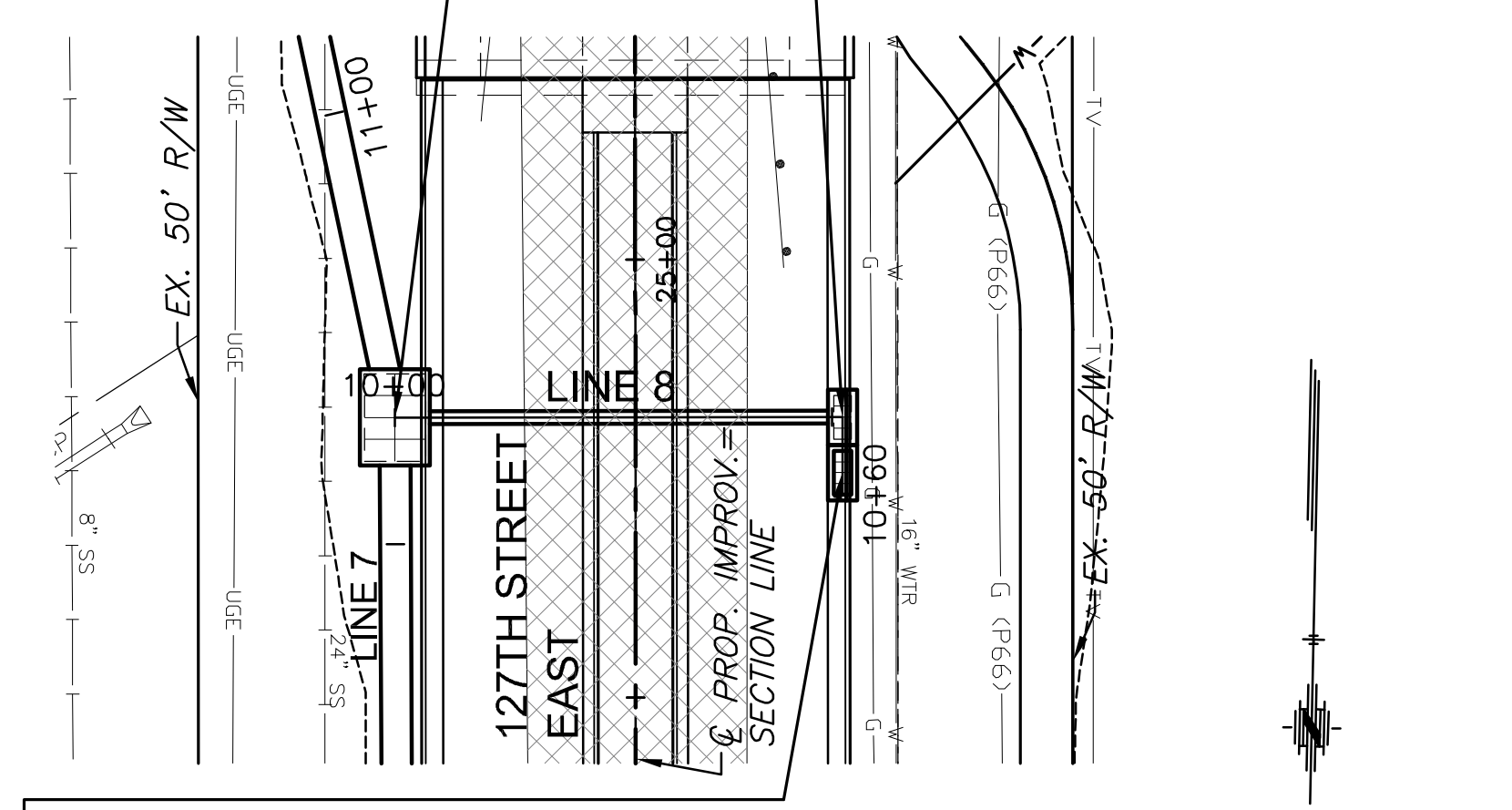


STATE	PROJECT NO.	YEAR	SHEET NO.	TOTAL SHEETS
KANSAS	87 N-0615-01	2017	28	183



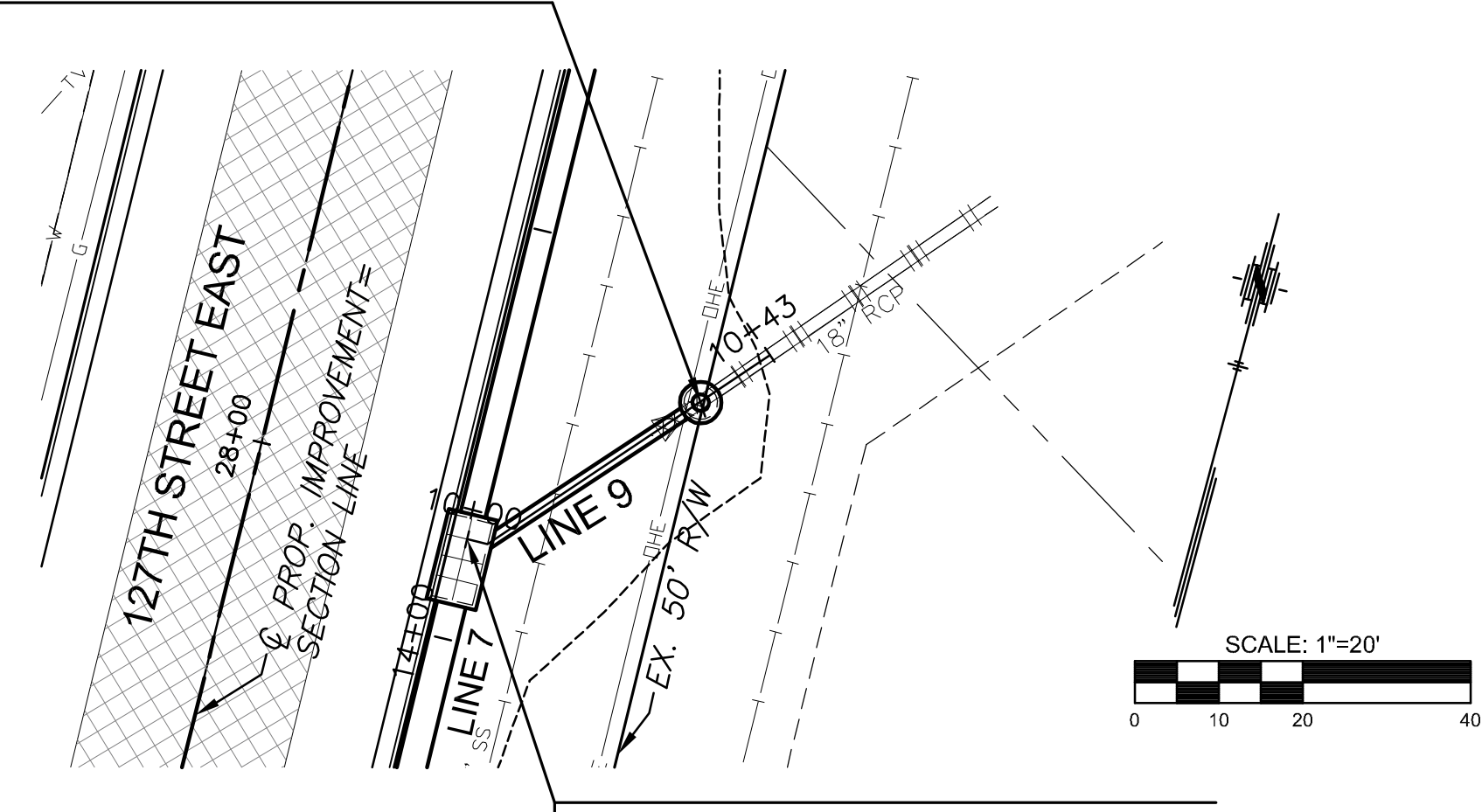
PLOTTED: Wednesday, November 29, 2017 @ 02:35PM  
 J:\PROJECTS\2017\1401040280 - COW\_127TH E - 13TH TO 21ST STS-CIVIL\LOADS\SWS\14280DPR6.DWG

STA. 10+00.00 SWS LINE 8=  
 STA. 11+35.54 SWS LINE 7=  
 STA. 25+18.00 127TH ST., 27.50' RT.  
 INLET TOP=1346.75  
 SEE SH. NO. 25,55

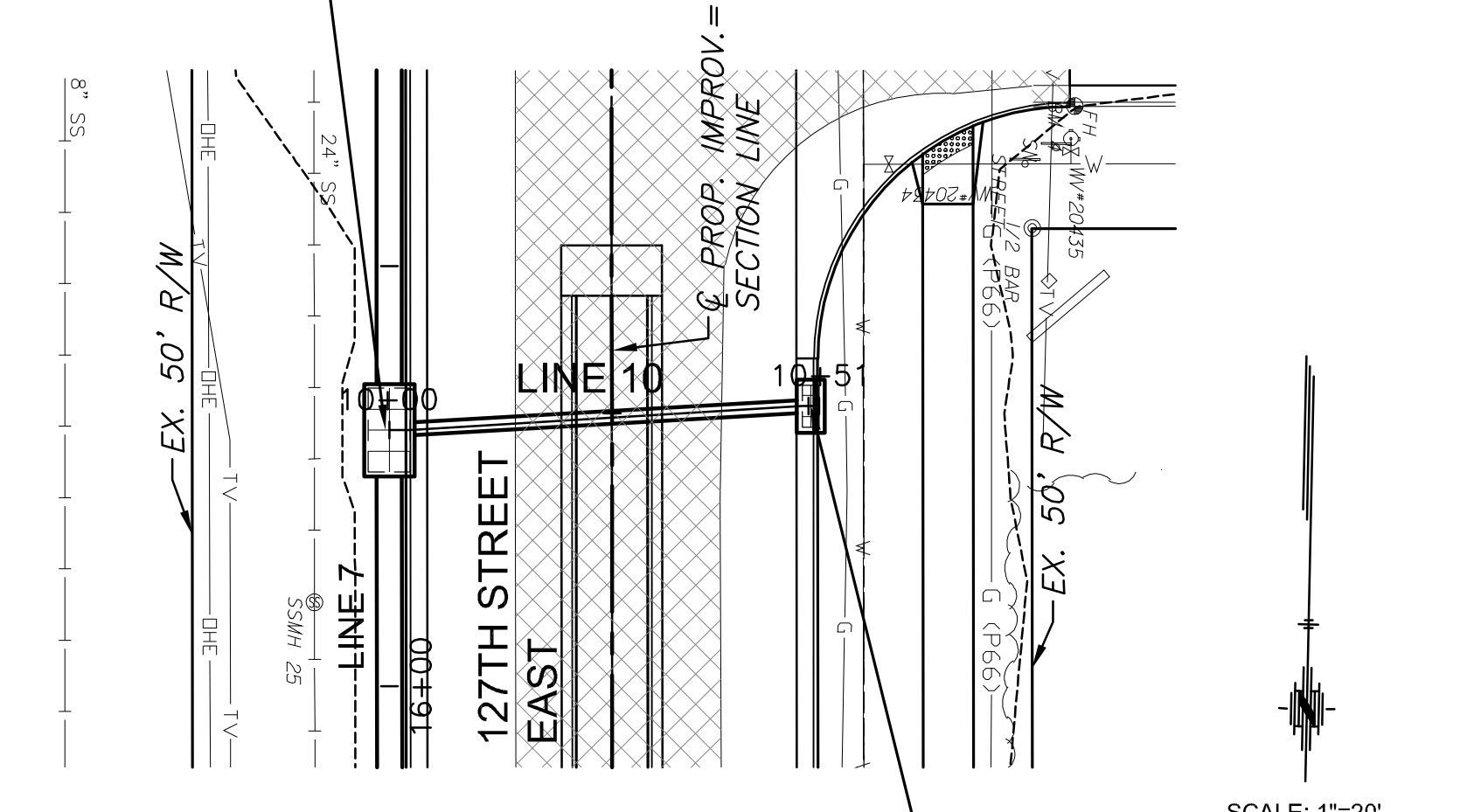


STA. 10+51.17 SWS LINE 8=  
 STA. 25+18.00 127TH ST., 23.67' LT.  
 CONST. TYPE 2 CURB INLET (DOUBLE)  
 L=6'-4", W=3'-4"  
 INLET TOP=1346.75  
 SEE SH. NO. 58

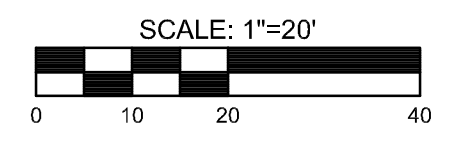
STA. 10+32.98 SWS LINE 9=  
 STA. 28+17.04 127TH ST., 49.66' RT.  
 REMOVE EXISTING END SECTION AND  
 CONST. 4' DIA. SHALLOW MANHOLE  
 MH TOP=1333.95  
 CONNECT TO EXISTING 18" RCP  
 SEE SH. NO. 62



STA. 10+00.00 SWS LINE 10=  
 STA. 15+69.52 SWS LINE 7=  
 STA. 29+51.98 127TH ST., 26.50' RT.  
 INLET TOP=1355.81  
 SEE SH. NO. 26,55

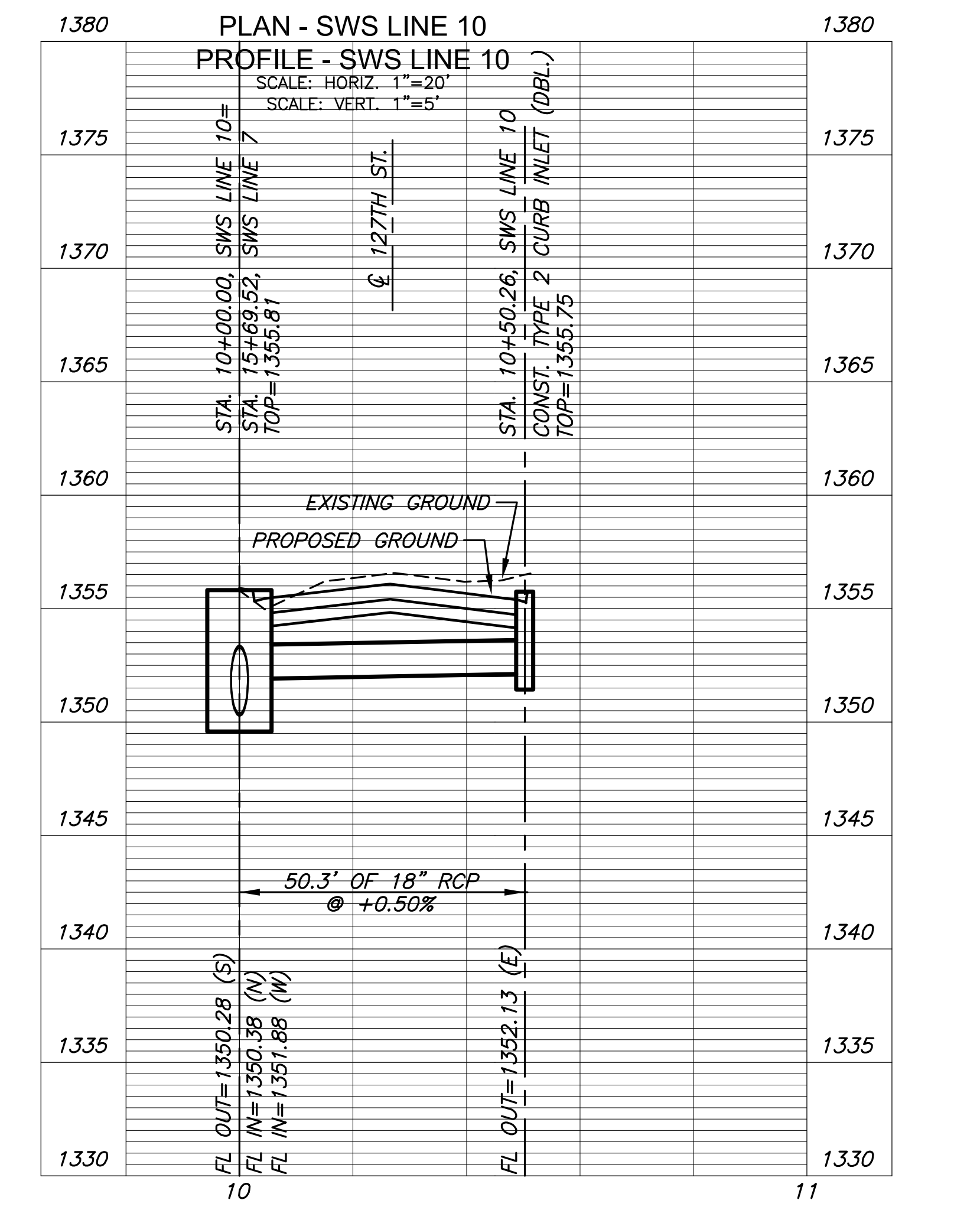
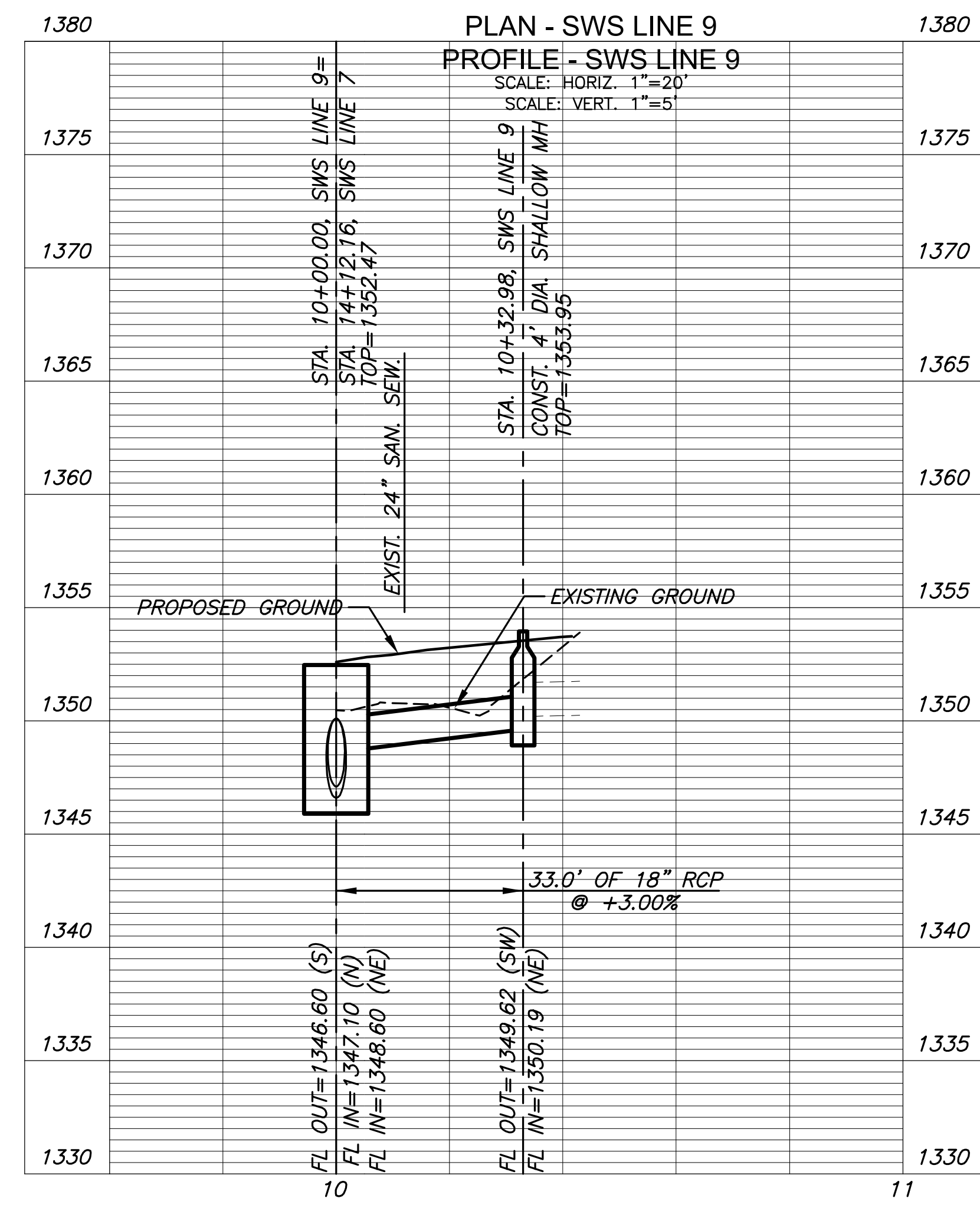
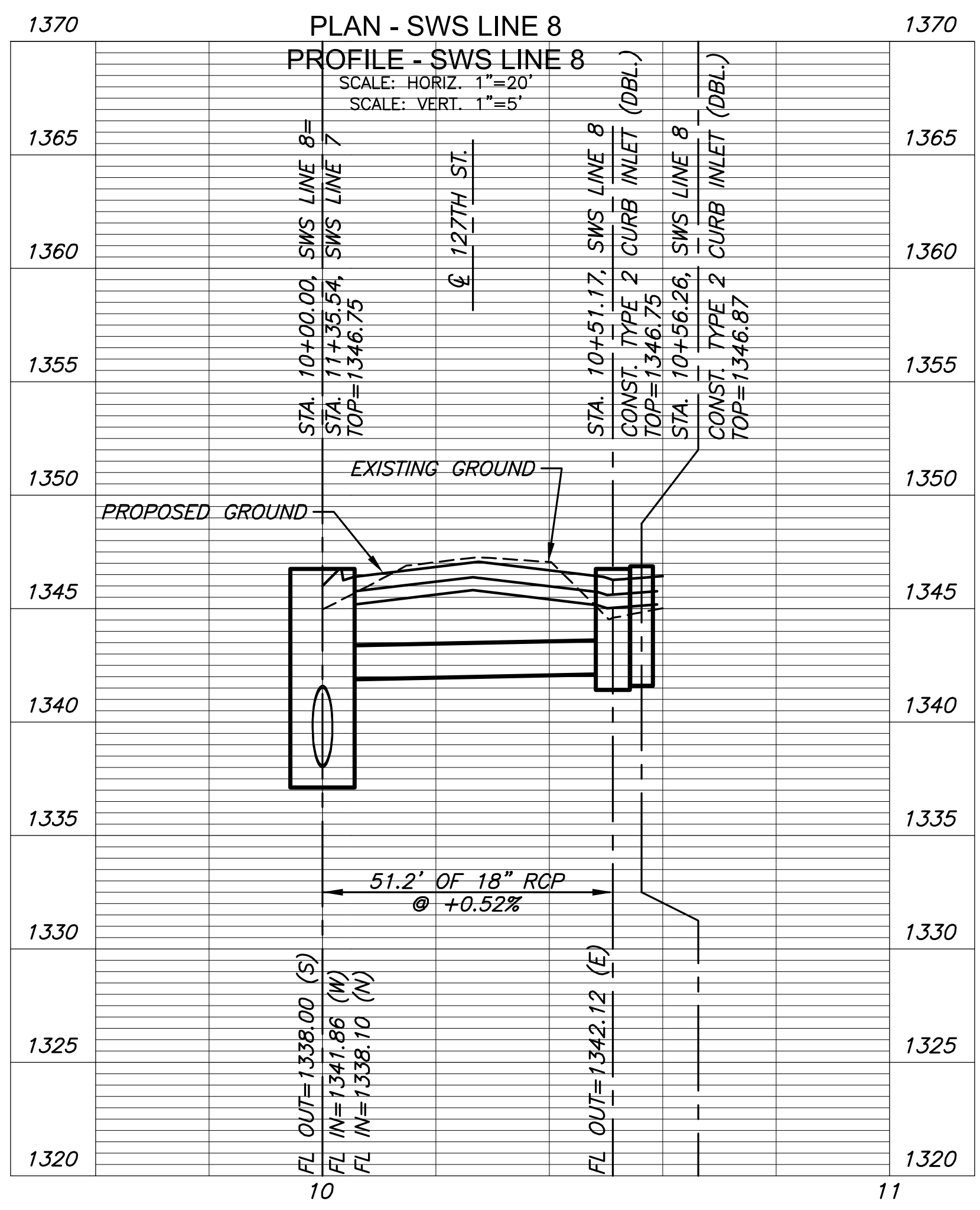
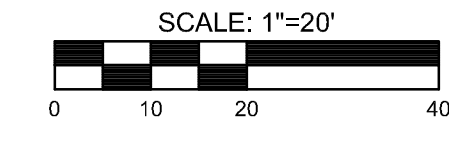


STA. 10+56.26 SWS LINE 8=  
 STA. 25+24.34 127TH ST., 23.67' LT.  
 CONST. TYPE 2 CURB INLET (DOUBLE)  
 L=6'-4", W=3'-4"  
 INLET TOP=1346.87  
 SEE SH. NO. 58



STA. 10+00.00 SWS LINE 9=  
 STA. 14+12.16 SWS LINE 7=  
 STA. 27+92.13 127TH ST., 26.50' RT.  
 INLET TOP=1352.47  
 SEE SH. NO. 25,55

STA. 10+50.26 SWS LINE 10=  
 STA. 29+49.15 127TH ST., 23.67' LT.  
 CONST. TYPE 2 CURB INLET (DOUBLE)  
 L=6'-4", W=3'-4"  
 INLET TOP=1355.75  
 SEE SH. NO. 58



STREET IMPROVEMENTS FOR  
**127TH STREET EAST**  
 FROM 13TH STREET NORTH TO 21ST STREET NORTH

©2017  
 MKEC Engineering  
 All Rights Reserved  
 www.mkec.com  
 These drawings and their contents, including but not limited to, all concepts, designs, & ideas are the exclusive property of MKEC Engineering (MKEC), and may not be used or reproduced in any way without the express consent of MKEC.

**"STORM SEWER  
 PLAN & PROFILE  
 LINES 8, 9 & 10"**

PROJECT NO.	472-85158	
DATE	11/29/17	
SCALE	1"=20'	
DESIGNED	JRA	
DRAWN	WNJ	
CHECKED	JRA	
NO.	REVISION	DATE
SHEET NO.		
28 OF 183		