

STATE	PROJECT NO.	YEAR	SHEET NO.	TOTAL SHEETS
KANSAS	87 N-0615-01	2017	52	183



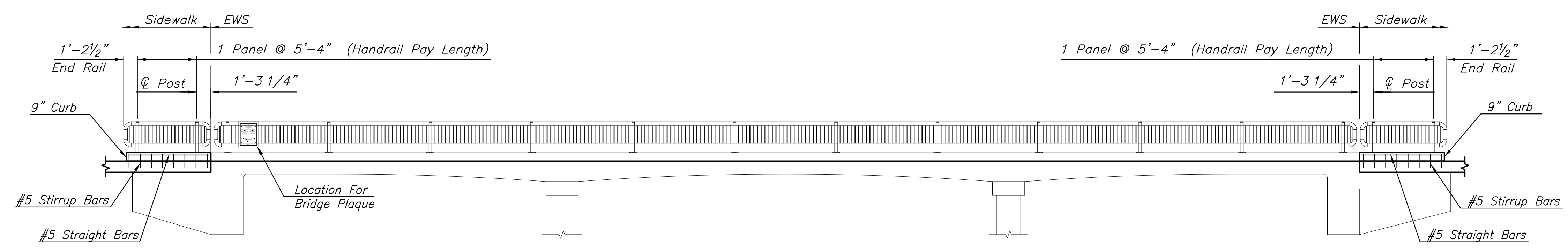
HANDRAIL NOTES

- The rail members shall conform to ASTM Designation A36 or equivalent.
- Rail shall be fabricated in lengths to include a minimum of two and a maximum of three panels. Posts shall be set vertical. Shims may be used between concrete and base plates of posts.
- All parts of handrail shall be painted. The primer coat shall conform to the inorganic zinc system. Surface preparation shall be in accordance with that for structural steel. The finish coat shall be in accordance with water-borne acrylic finish coat.
- The Contractor shall submit color chart for approval by the City. The color shall be "black (carboline C900)".
- All materials, equipment and labor necessary for the installation of the handrail shall be subsidiary to the bid item.

FOR INFORMATION ONLY

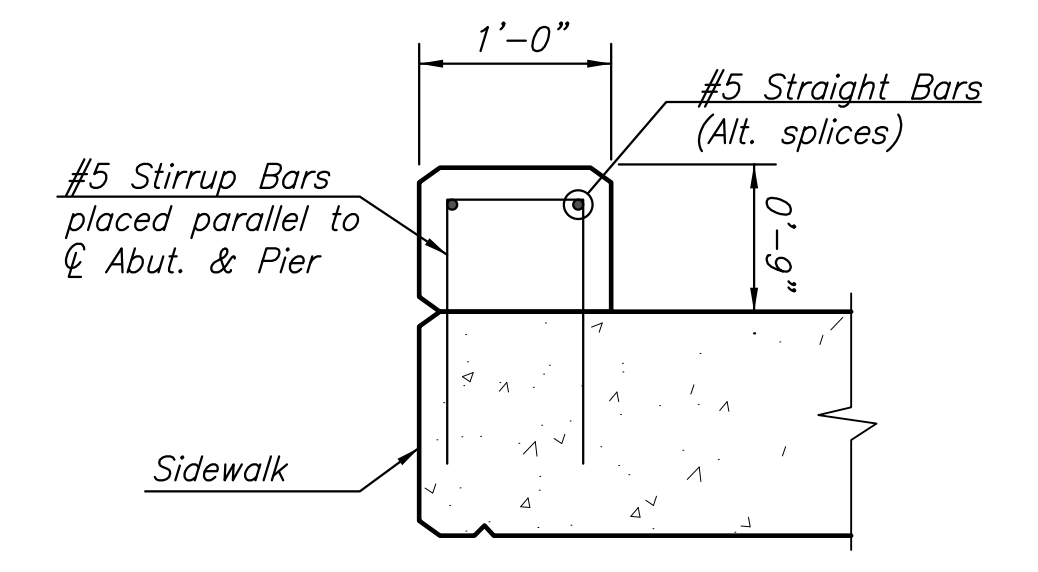
BILL OF REINFORCING STEEL/QUANTITIES (9" Curb)					
Straight Bars			Bent Bars		
Size	No.	Length	Size	No.	Length
#5	4	7'-3"	#5	16	3'-7"
Reinforcing Steel (Gr. 60)			90 Lbs.		
Concrete (Gr. 4.0)			0.4 Cu. Yds.		

*All materials, equipment, and labor necessary for the construction of the 9" curb shall be subsidiary to the bid item "Concrete Sidewalk Protection Curb (Special)".



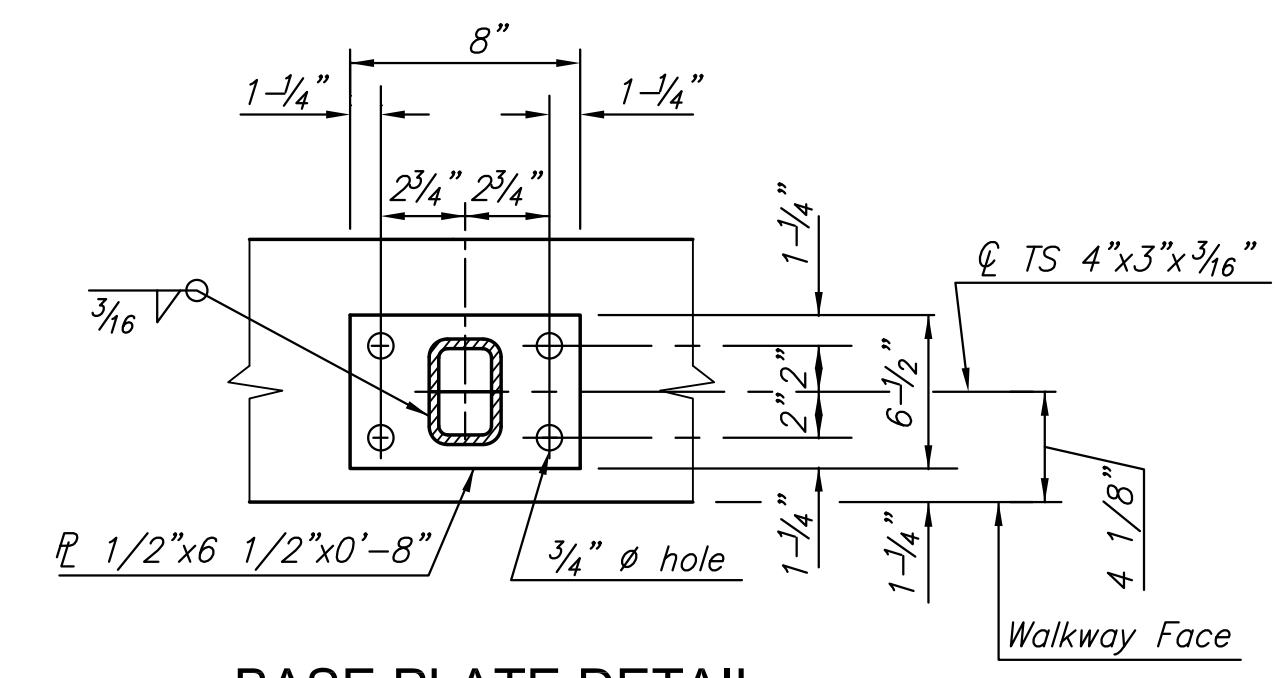
ELEVATION - HANDRAIL, PEDESTRIAN

(Shown and Dimensioned along Walkway Face of Handrail)
(West Edge Bridge Deck - Phase 2)

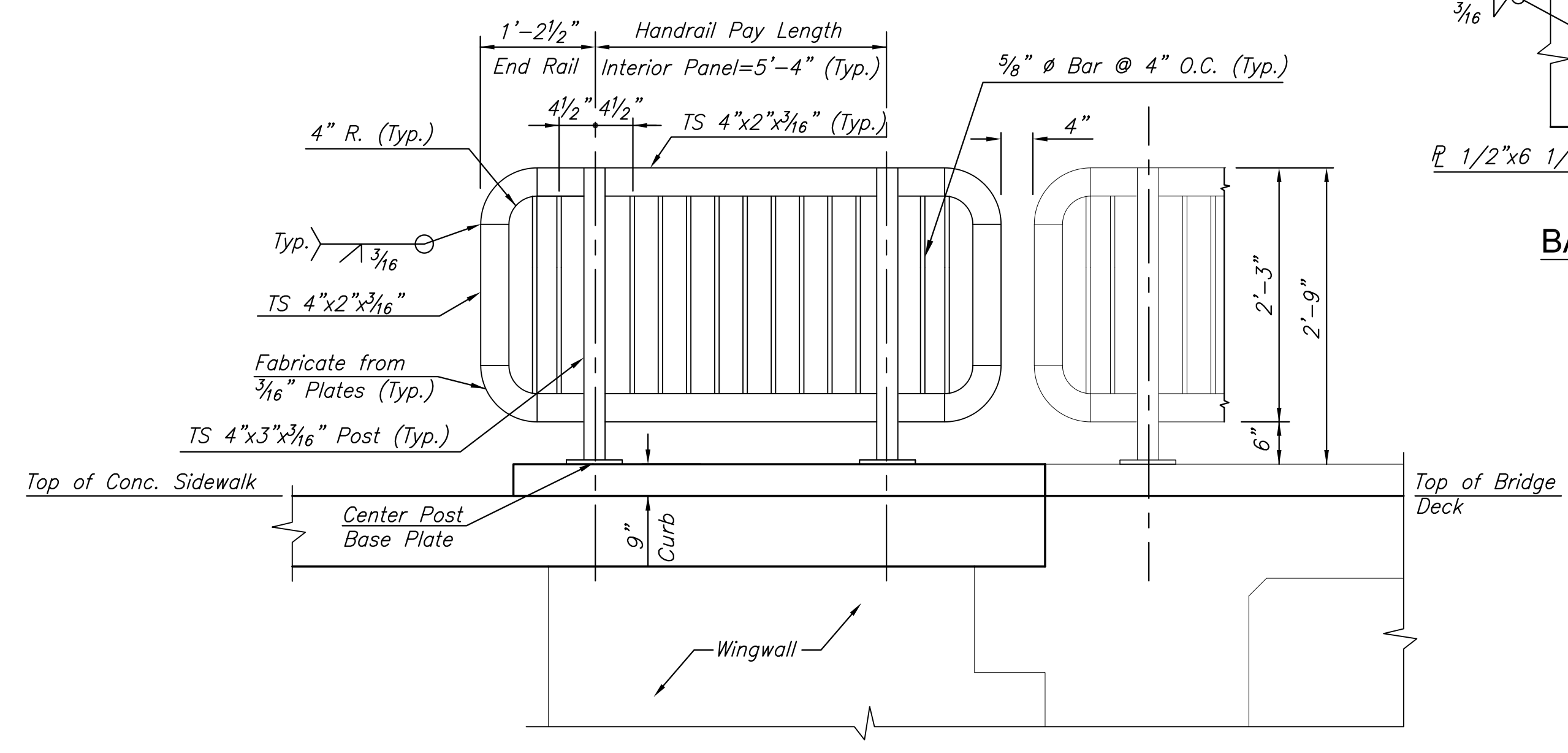


9" CURB DETAIL

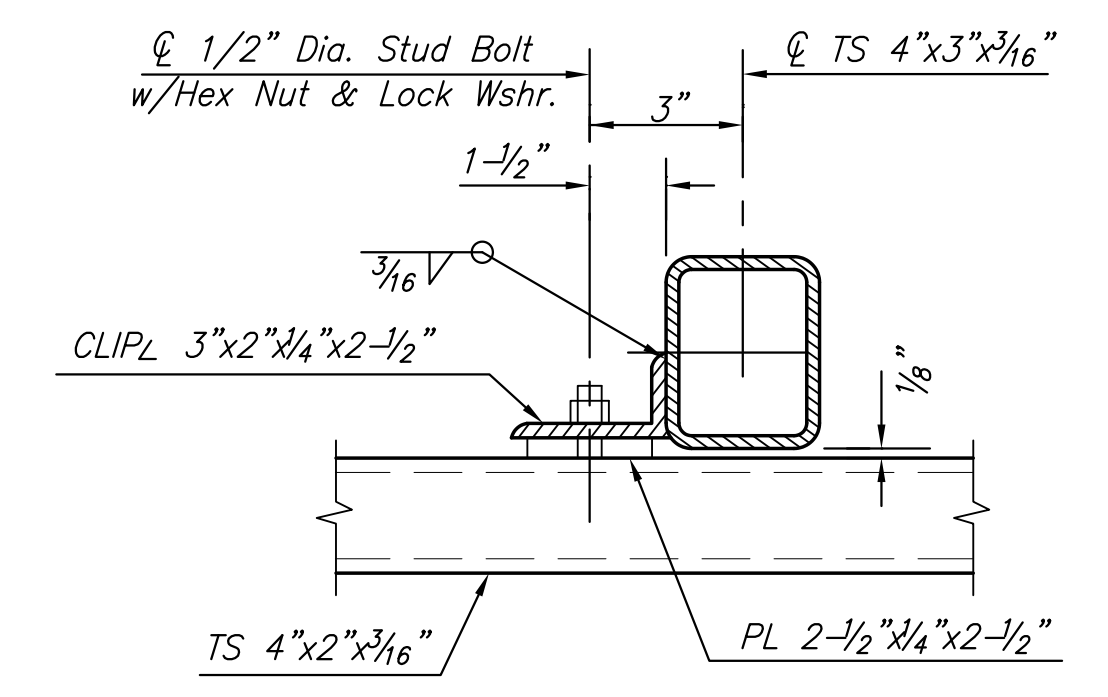
(Concrete Sidewalk Protection Curb, Special)



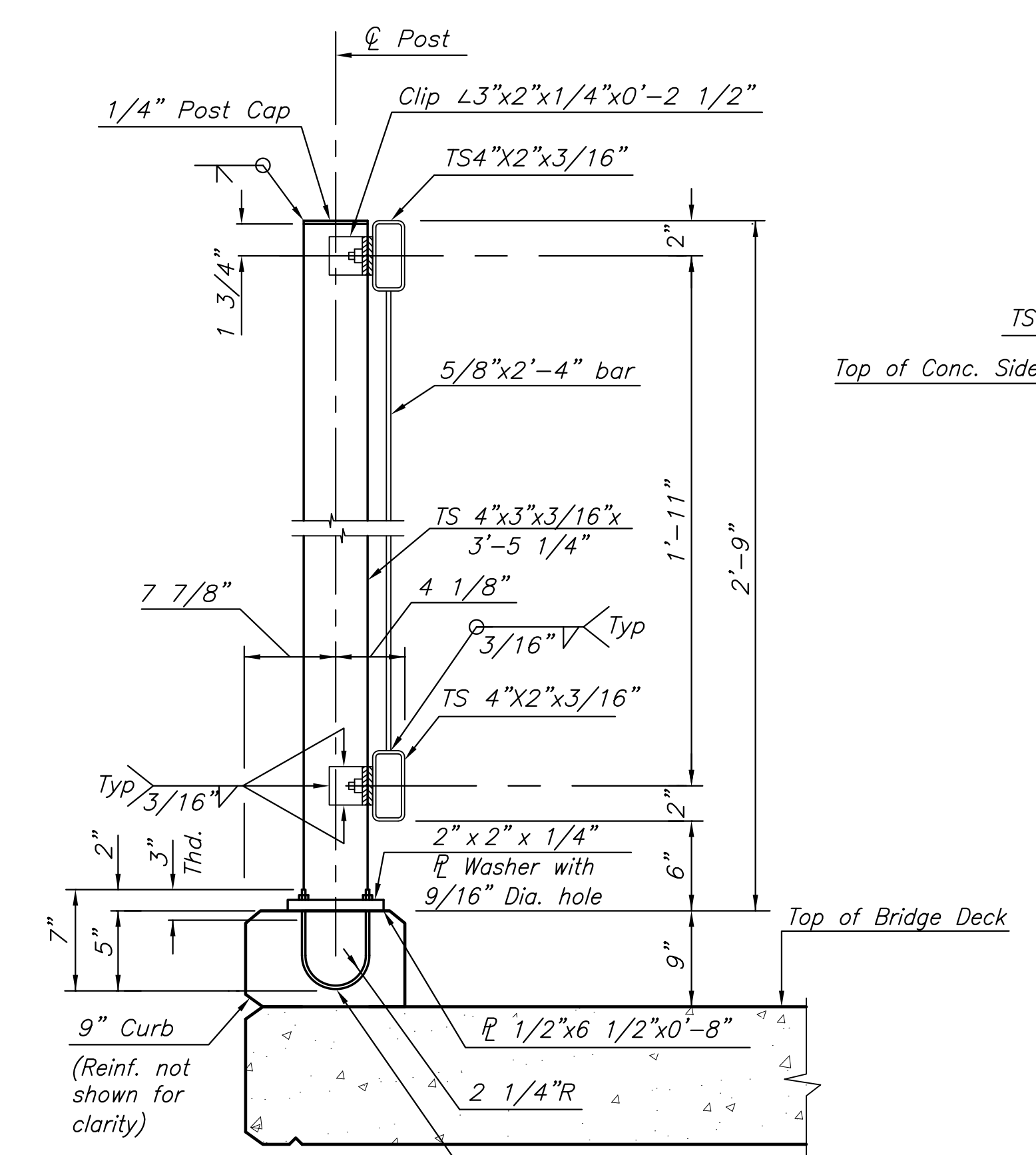
BASE PLATE DETAIL



TYPICAL PANEL DETAIL

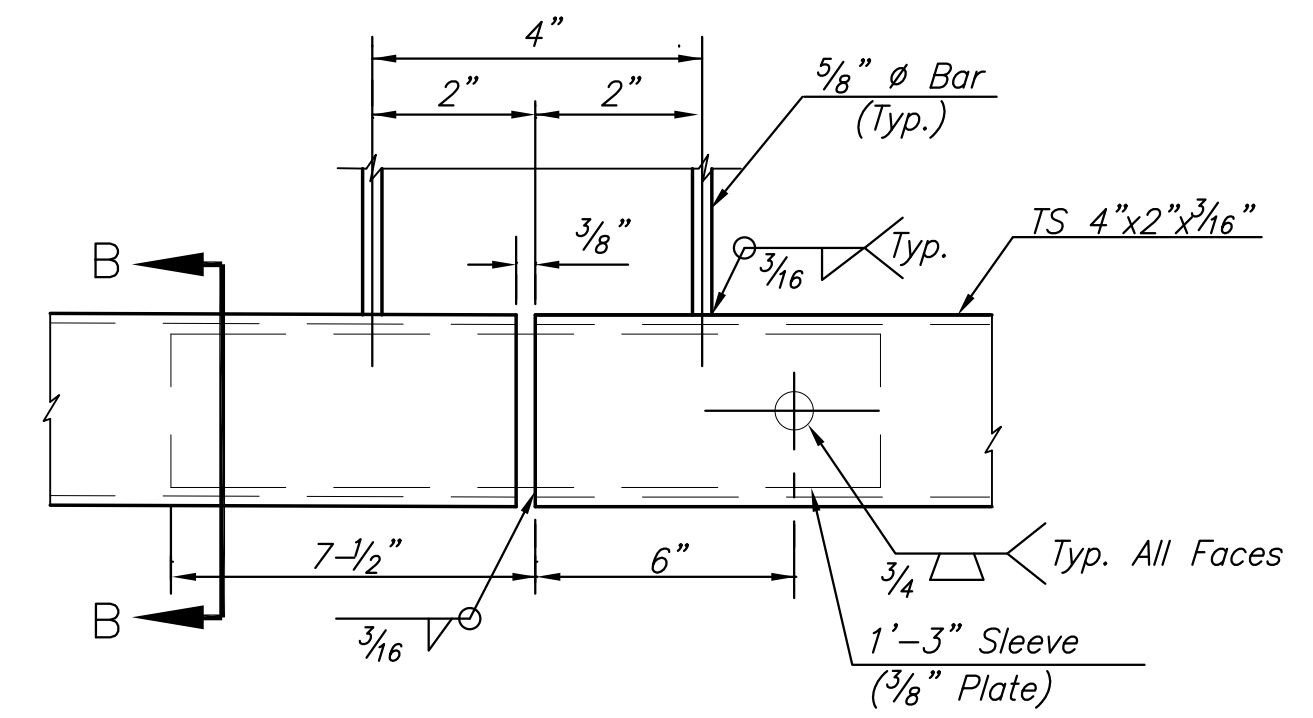


RAIL CONNECTION DETAIL



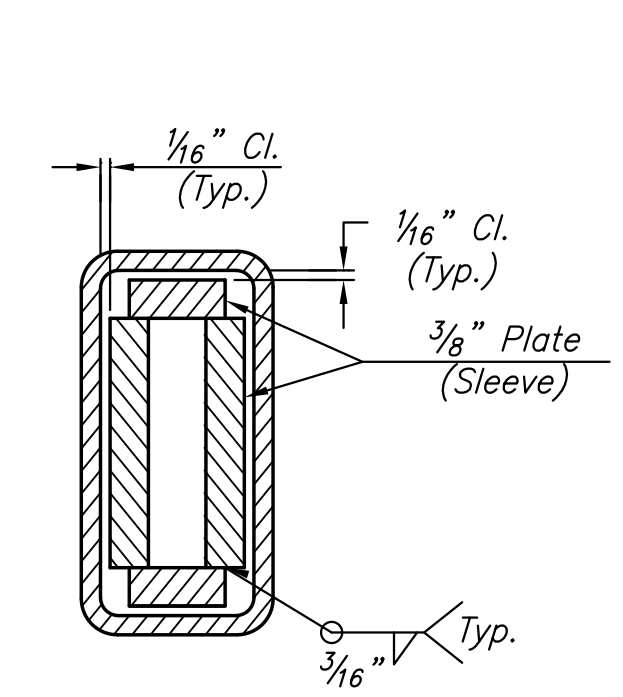
TYPICAL RAIL SECTION

NO SCALE

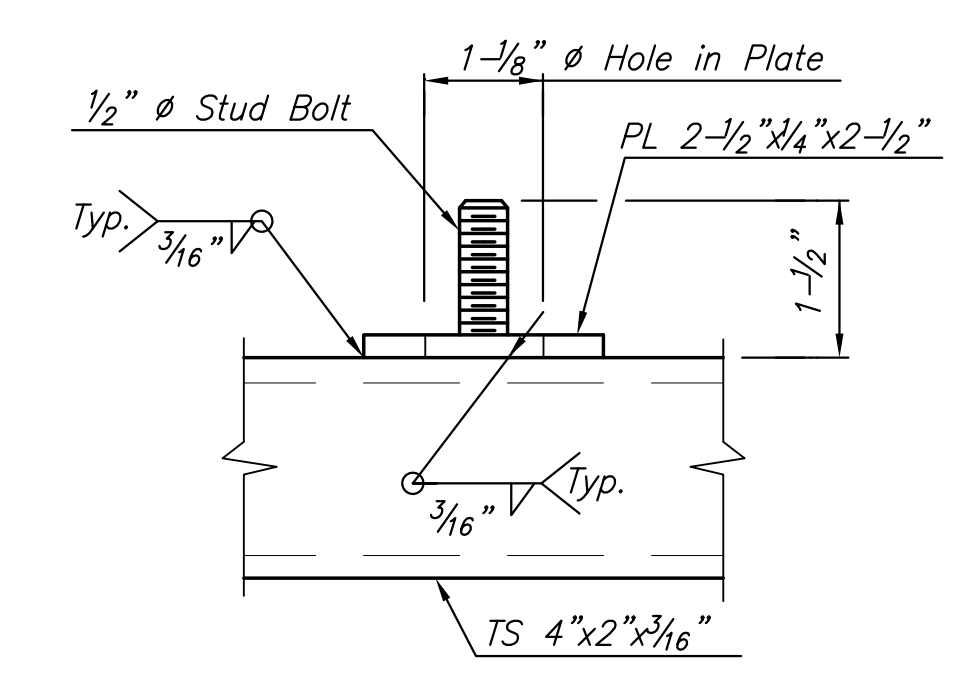


SLEEVE DETAIL

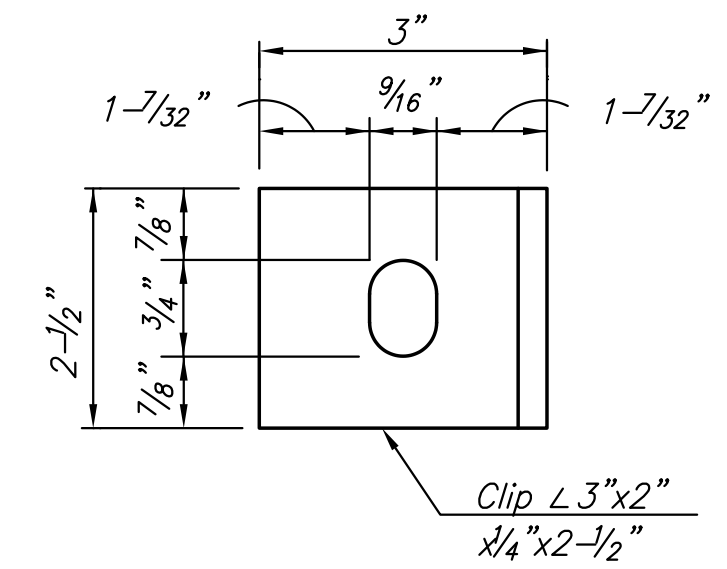
(Bottom Rail Shown, Top Rail Similar)



SECTION B-B



STUD BOLT DETAIL



CLIP DETAIL

STREET IMPROVEMENTS FOR

127TH STREET EAST

FROM 13TH STREET NORTH TO 21ST STREET NORTH

©2017 MKEC Engineering All Rights Reserved www.mkec.com These drawings and their contents, including, but not limited to, all concepts, designs, & ideas are the exclusive property of MKEC Engineering (MKEC), and may not be used or reproduced in any way without the express consent of MKEC.

HANDRAIL, PEDESTRIAN

PROJECT NO.	472-85158	
DATE	11/29/17	
SCALE	NTS	
DESIGNED	DRAWN	CHECKED
KJS	RAM	KJS
NO.	REVISION	DATE

SHEET NO.

52 OF 183

J:\PROJECTS\2017\140104290 - COM_127THE 13TH TO 21ST\05-CIVIL\GAP\PAV1429009.DWG
 PLOTTED: Wednesday, December 06, 2017 @ 01:40PM