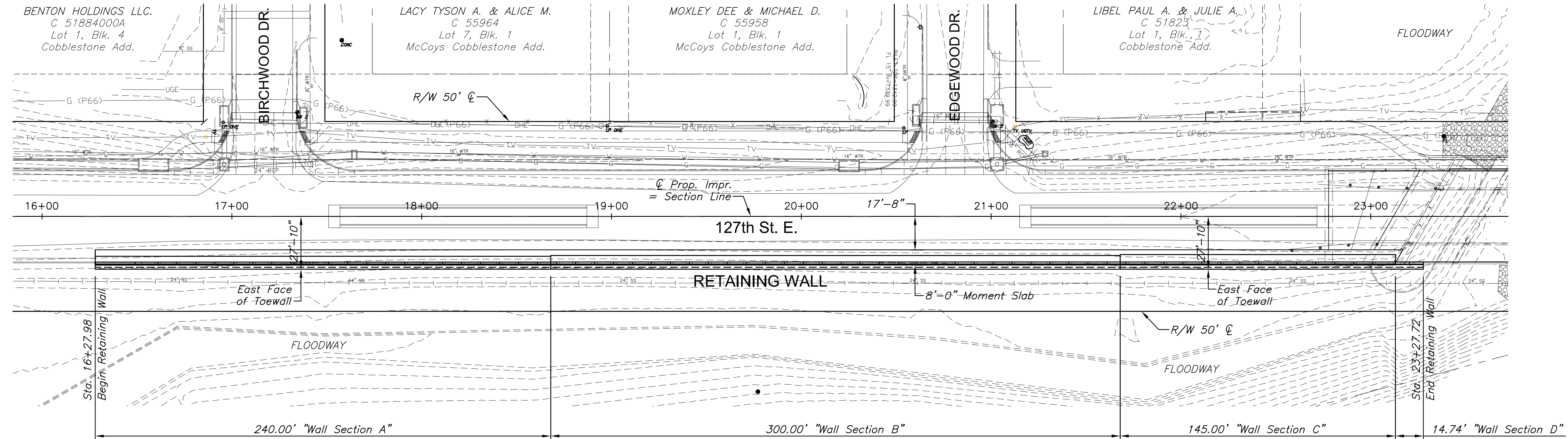
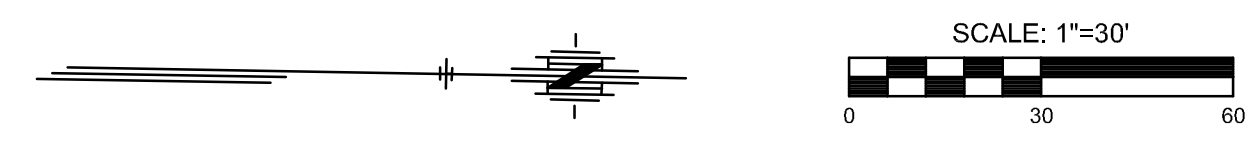


STATE	PROJECT NO.	YEAR	SHEET NO.	TOTAL SHEETS
KANSAS	87 N-0615-01	2017	76	183

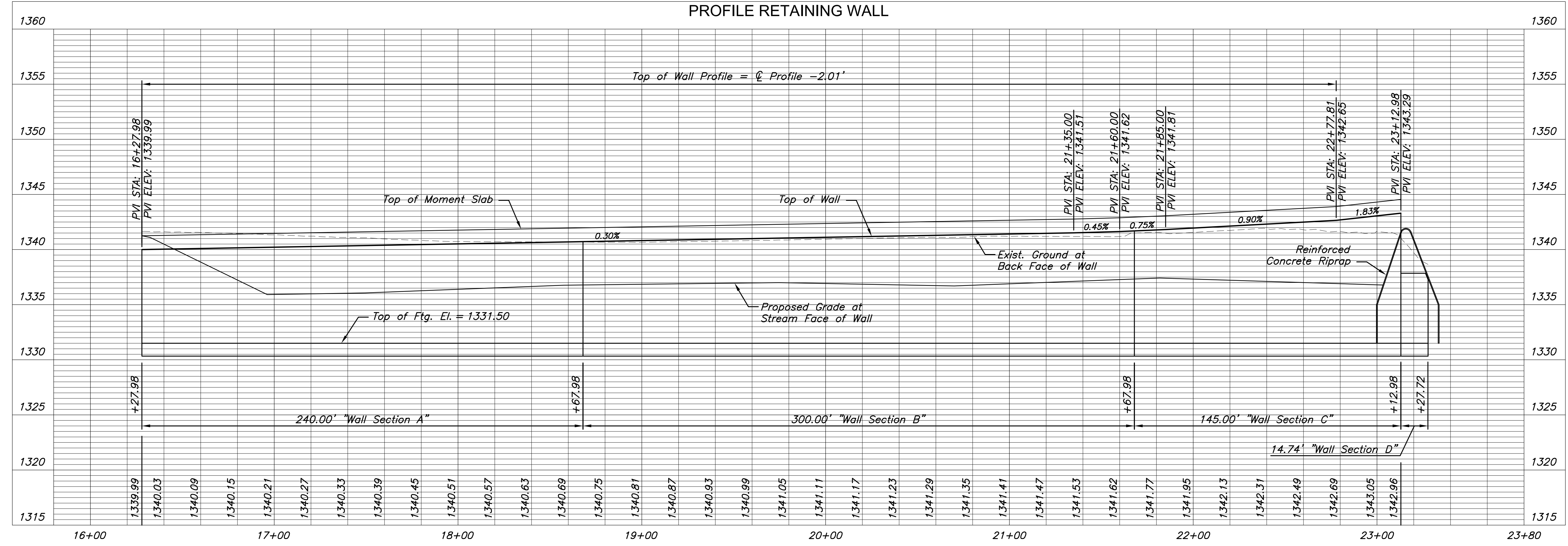


BM#2 Chiseled square top of curb in front of a FH at the northwest cor. of 127th street North & Birchwood Dr. Sta. 17+34.47, 54.79' Lt., Elev.=1342.27 (NAVD 88)



NOTE:  
See Sh. No. 77 for Retaining Wall Sections and Moment Slab Details.

PLAN RETAINING WALL  
PROFILE RETAINING WALL



STREET IMPROVEMENTS FOR

**127TH STREET EAST**

FROM 13TH STREET NORTH TO 21ST STREET NORTH

©2017 MKEC Engineering All Rights Reserved  
These drawings and their contents, including, but not limited to, all concepts, designs, & ideas are the exclusive property of MKEC Engineering (MKEC), and may not be used or reproduced in any way without the express consent of MKEC.

RETAINING WALL PLAN & PROFILE

PROJECT NO.	472-85158	
DATE	11/29/17	
SCALE	1"=30'	
DESIGNED	DRAWN	CHECKED
KJS	DMU	KJS

NO.	REVISION	DATE

SHEET NO.

J:\PROJECTS\2017\140104280 - COW\_127THE\_13TH TO 21ST STS-CIVIL\CAOWALL14280WP01.DWG  
 PLOTTED: Wednesday, November 29, 2017 9:02:59PM