

STATE	PROJECT NO.	YEAR	SHEET NO.	TOTAL SHEETS
KANSAS	87 N-0615-01	2017	78	183



RETAINING WALL GENERAL NOTES

UNIT STRESSES:
Concrete $f'_c = 4 \text{ ksi}$
Reinforcing Steel (Grade 60) $f_y = 60 \text{ ksi}$

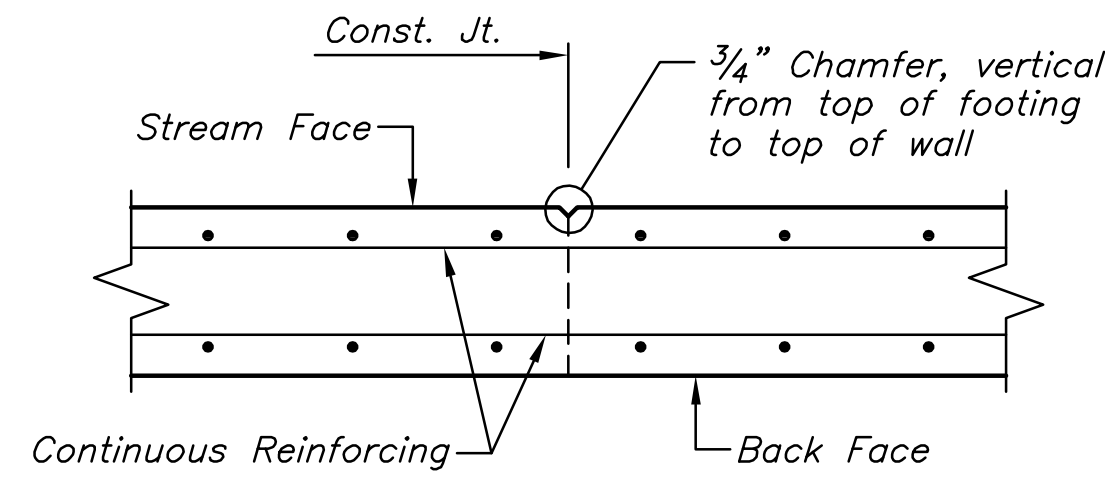
EXCAVATION: All excavation required for construction of the Retaining Wall shall be Class III Excavation and shall be considered *subsidiary* to the bid item "Retaining Wall".

GEOLOGIC INFORMATION: Boring Logs are in the file of the Consultant, and are available for inspection by interested and/or qualified bidders.

CONCRETE: Bevel all exposed edges of concrete with a $\frac{3}{4}$ " triangular molding, except as otherwise noted on the plans. Exposed surfaces, except recessed grooves shall be given a rubbed surface. All concrete shall be considered *subsidiary* to the bid item "Retaining Wall".

REINFORCING STEEL: All reinforcing steel dimensions are to the centerline of bars, unless otherwise noted. All reinforcing steel shall conform to ASTM A615, Grade 60. The Contractor shall submit rebar shop drawings, for approval by the Engineer, prior to fabrication. All reinforcing bar supports shall be per CRSI "Manual of Standard Practice". All reinforcing steel shall be considered *subsidiary* to the bid item "Retaining Wall".

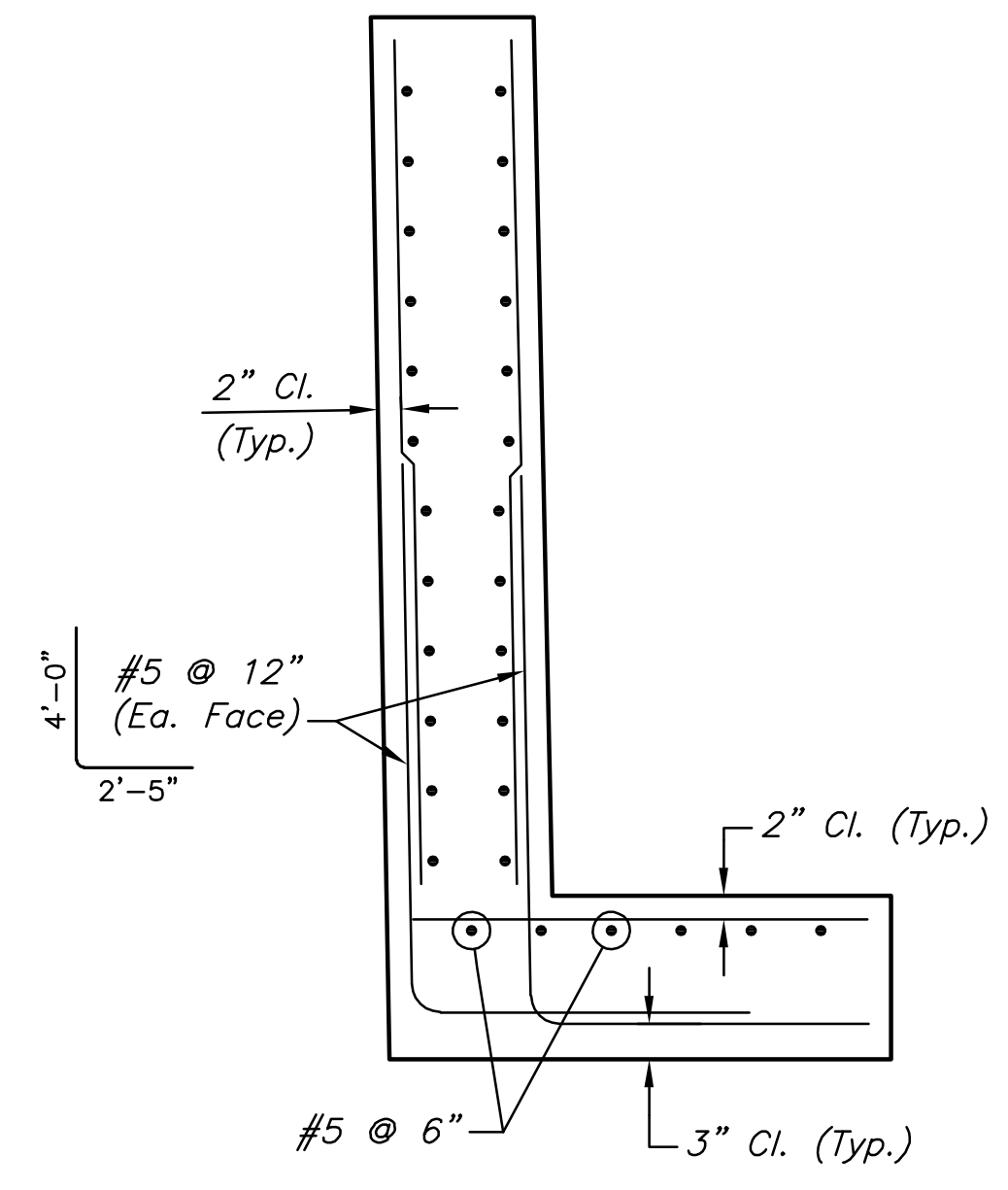
Location	Item	Concrete (Cu. Yds.)	Reinforcing Steel (Lbs.)	Fill, Select (Cu. Yds.)
Wall Section A		181.4	31,184	479.6
Wall Section B		250.8	40,710	691.0
Wall Section C		126.9	21,184	402.3
Wall Section D		6.3	923	0.0
TOTAL		566	94,010	1,573



TYPICAL CONSTRUCTION JOINT

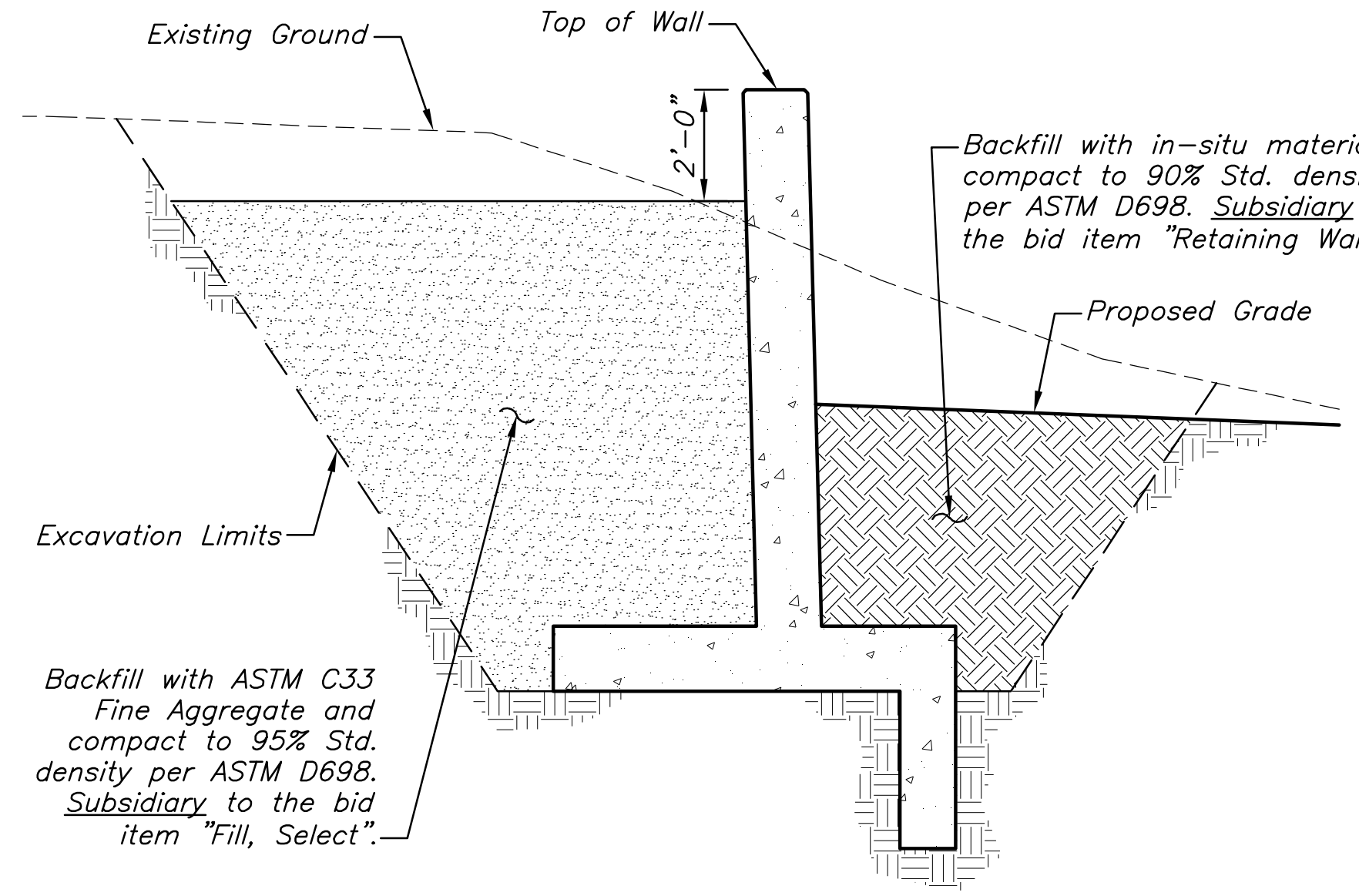
Construction Joints are optional with the Contractor. If used, place the joints only at locations approved by the Engineer prior to construction.

NOTE:
All previously cast concrete surfaces shall be prepared per the "PREPARATION OF EXISTING CONCRETE" note on Sh. No. 81.



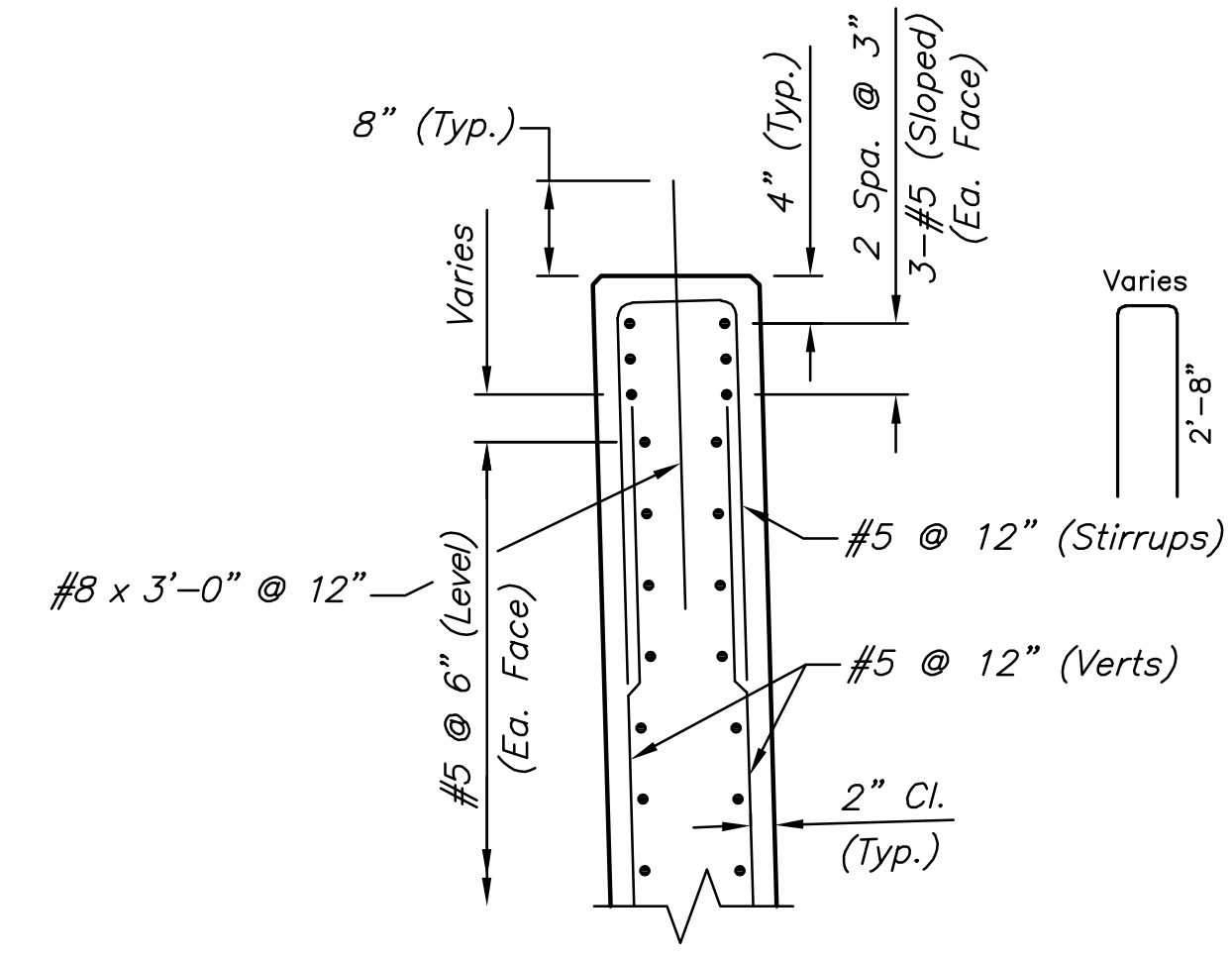
TYPICAL SECTION WALL SECTION D

(Showing reinforcing in Retaining Wall)
(See Wall Sections, Sh. No. 77 for dimensions)



EXCAVATION AND BACKFILL FOR RETAINING WALL

(Looking Up Station)

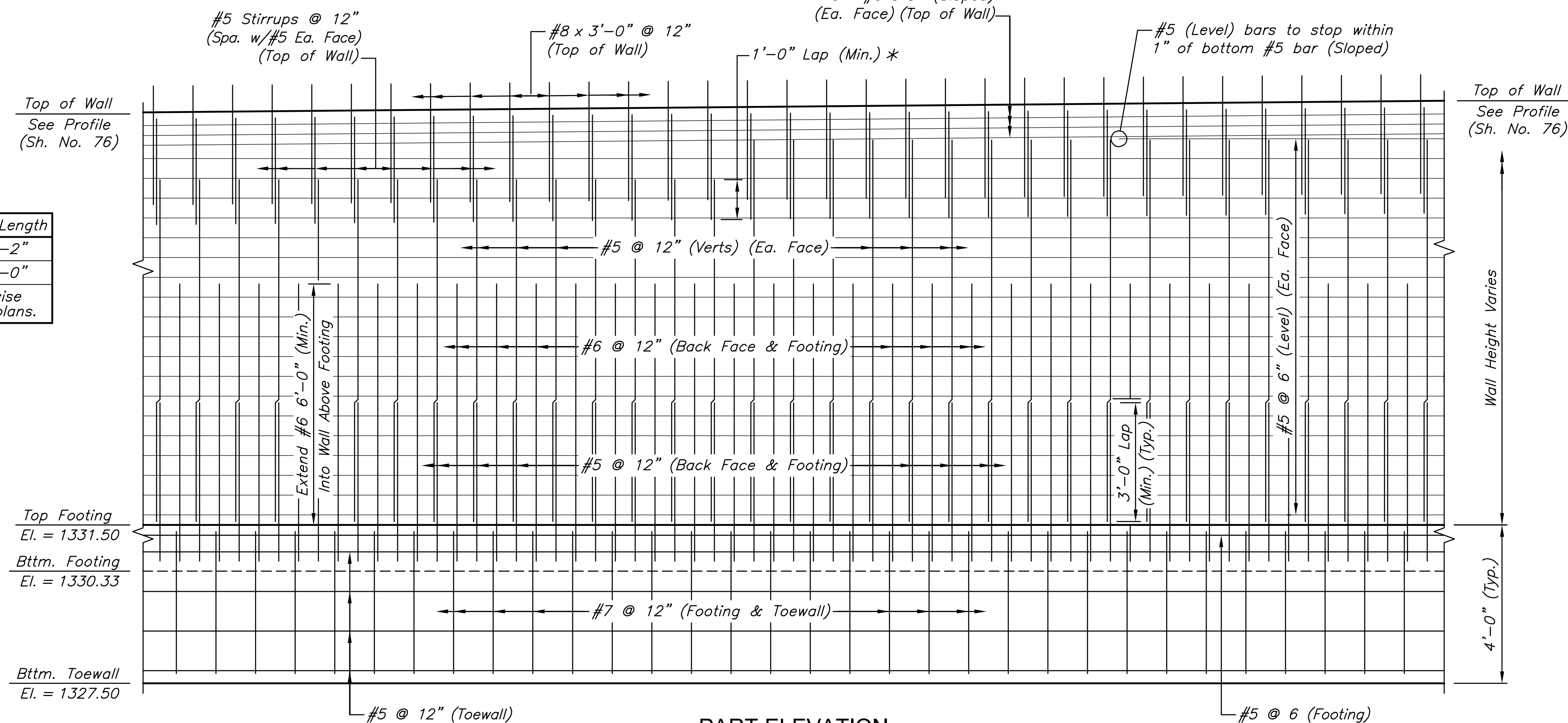


TYPICAL SECTION - WALL SECTIONS A, B, & C

(Showing reinforcing in Retaining Wall)
(See "Part Elevation" for additional detail)
(See Wall Sections, Sh. No. 77 for dimensions)

#5	2'-2"
#6	3'-0"

Unless otherwise noted on the plans.



PART ELEVATION

(Showing reinforcing in Retaining Wall)
(See Typical Sections for additional detail)
(See Wall Sections, Sh. No. 77 for dimensions)

*** NOTE:**
Lap lengths for #5 Verts and #5 Stirrups in the Top of Wall may vary (1'-0" Min.) to allow for long runs of Verts of the same length.

STREET IMPROVEMENTS FOR
127TH STREET EAST
FROM 13TH STREET NORTH TO 21ST STREET NORTH

©2017 MKEC Engineering
All Rights Reserved
www.mkec.com
These drawings and their contents, including, but not limited to, all concepts, designs, & ideas are the exclusive property of MKEC Engineering (MKEC), and may not be used or reproduced in any way without the express consent of MKEC.

RETAINING WALL DETAILS

PROJECT NO.	472-85158	
DATE	11/29/17	
SCALE	NTS	
DESIGNED	DRAWN	CHECKED
KJS	DMU	KJS

NO.	REVISION	DATE
-----	----------	------

SHEET NO.

78 OF 183

PLOT: Wednesday, November 29, 2017 @ 03:00PM
J:\PROJECTS\2017\1401040290 - COWI_127THE_13TH TO 21ST\05-CIVIL\CAI\WALL14280\DWG02.DWG