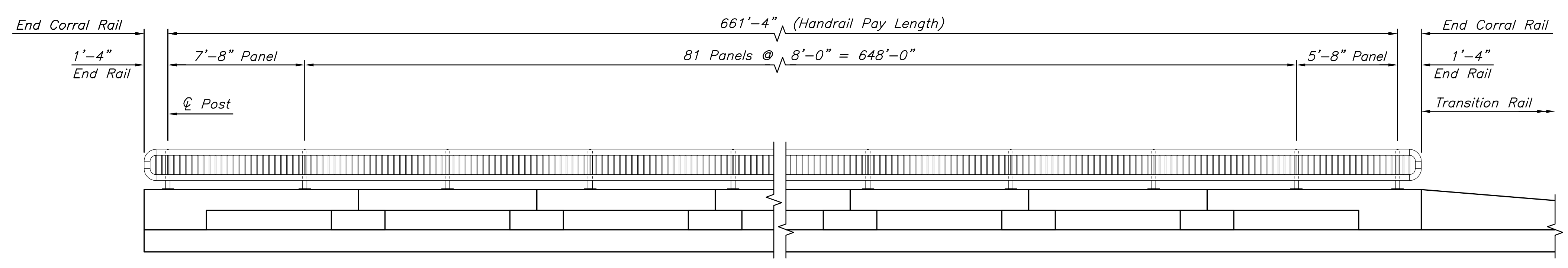


STATE	PROJECT NO.	YEAR	SHEET NO.	TOTAL SHEETS
KANSAS	87 N-0615-01	2017	80	183



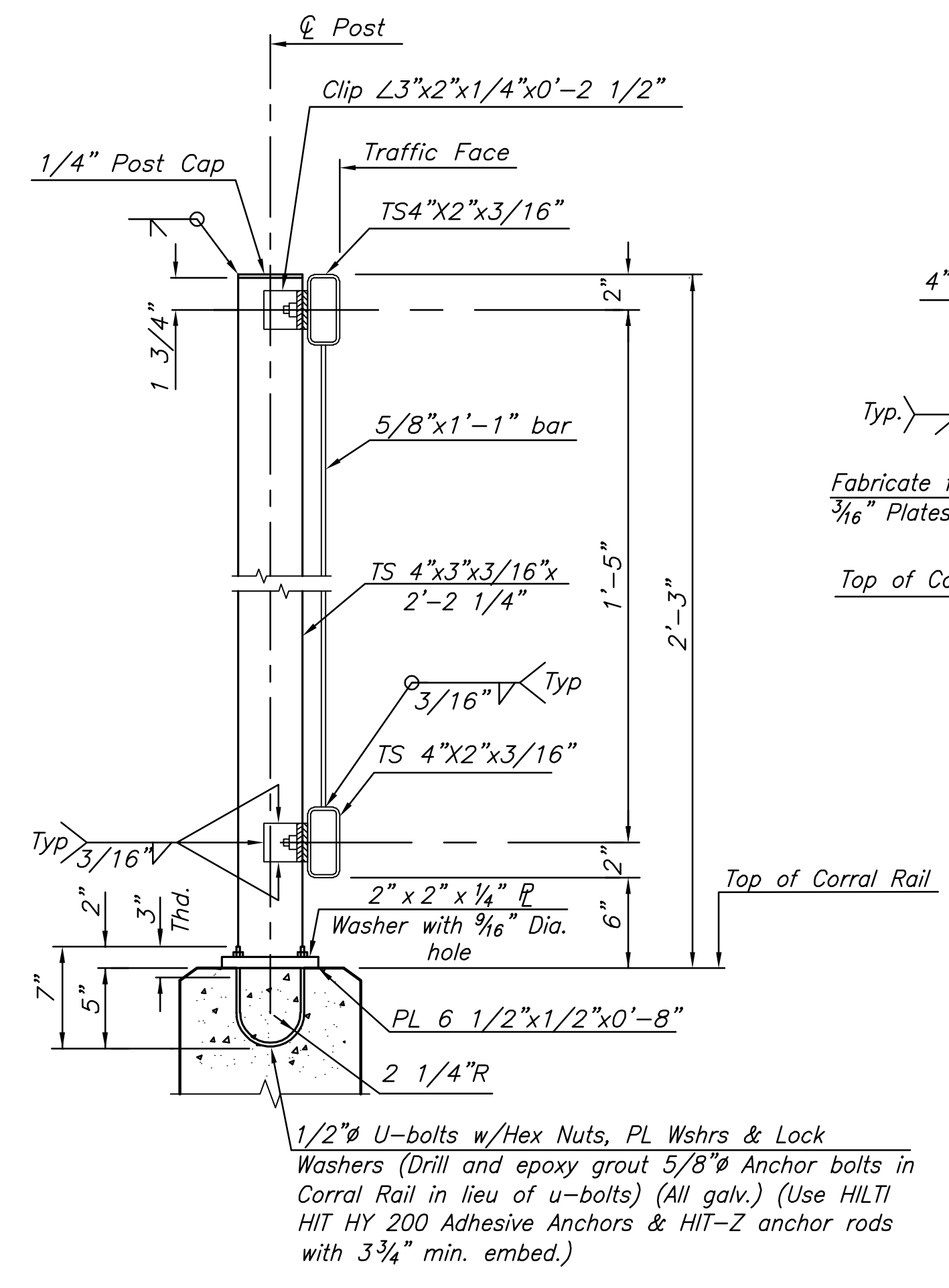
### HANDRAIL NOTES

- The rail members shall conform to ASTM Designation A36 or equivalent.
- Rail shall be fabricated in lengths to include a minimum of two and a maximum of three panels. Posts shall be set vertical. Shims may be used between concrete and base plates of posts.
- All parts of handrail shall be painted. The primer coat shall conform to the inorganic zinc system. Surface preparation shall be in accordance with that for structural steel. The finish coat shall be in accordance with water-borne acrylic finish coat.
- The Contractor shall submit color chart for approval by the City. The color shall be "black (carboline C900)".
- All materials, equipment and labor necessary for the installation of the handrail shall be subsidiary to the bid item.

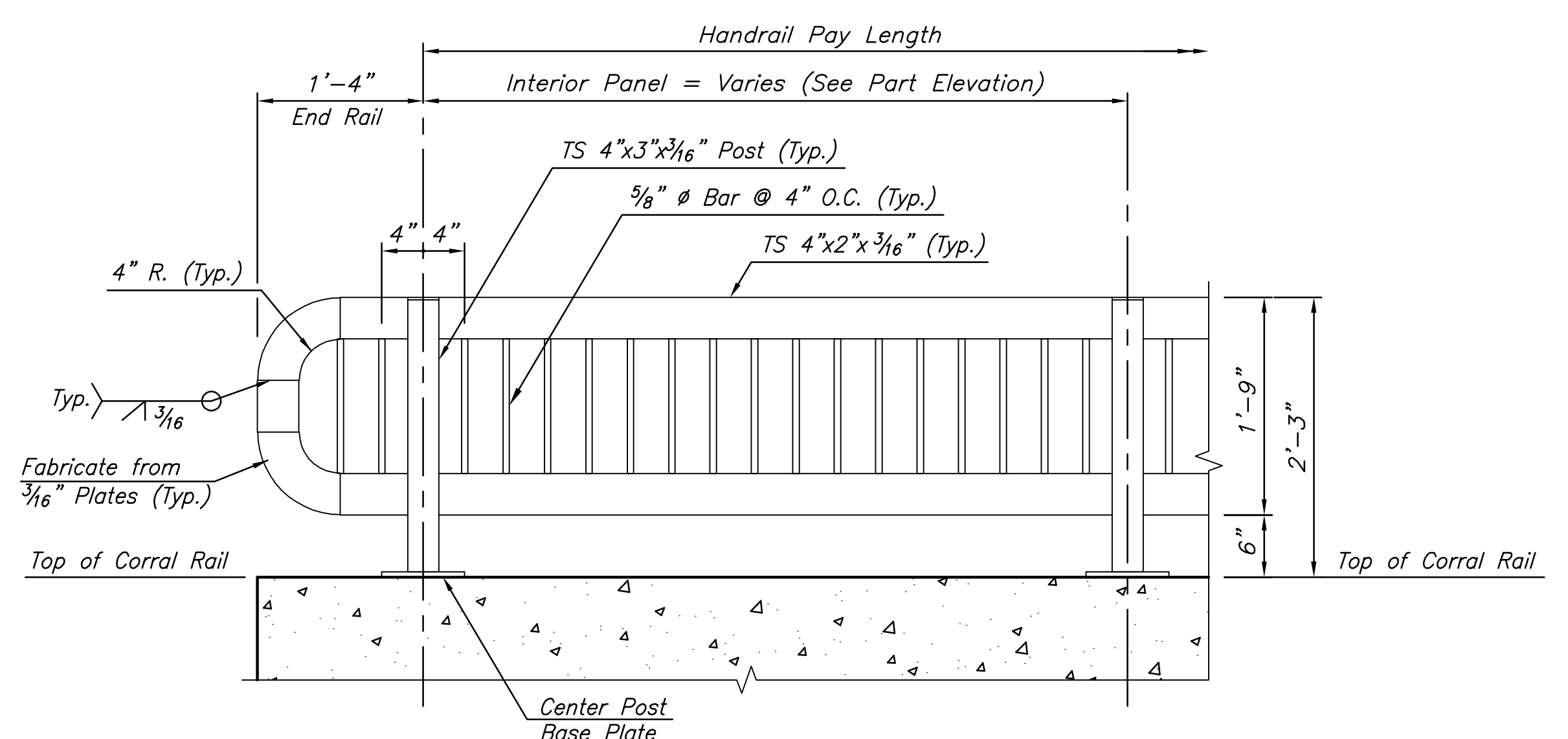


### PART ELEVATION - HANDRAIL, BICYCLE

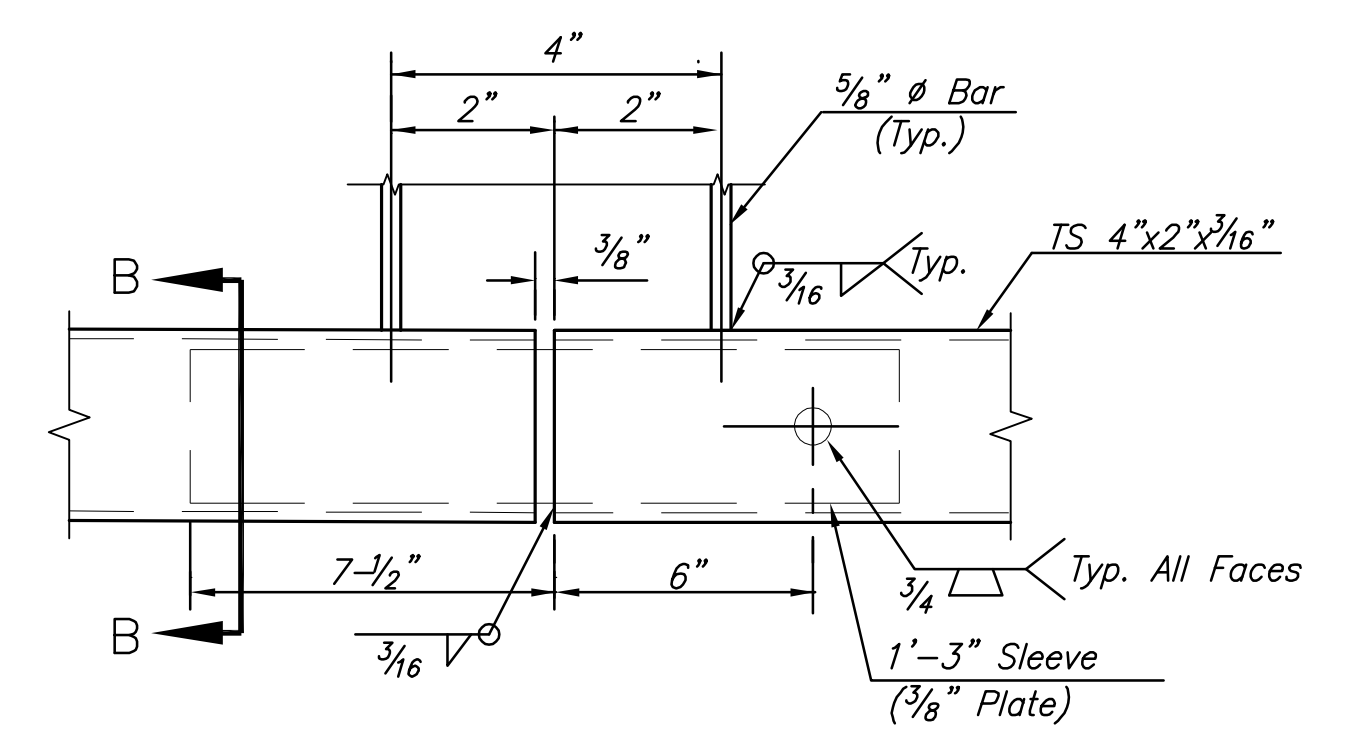
(Shown and dimensioned along Traffic Face of Corral Rail on Moment Slab)



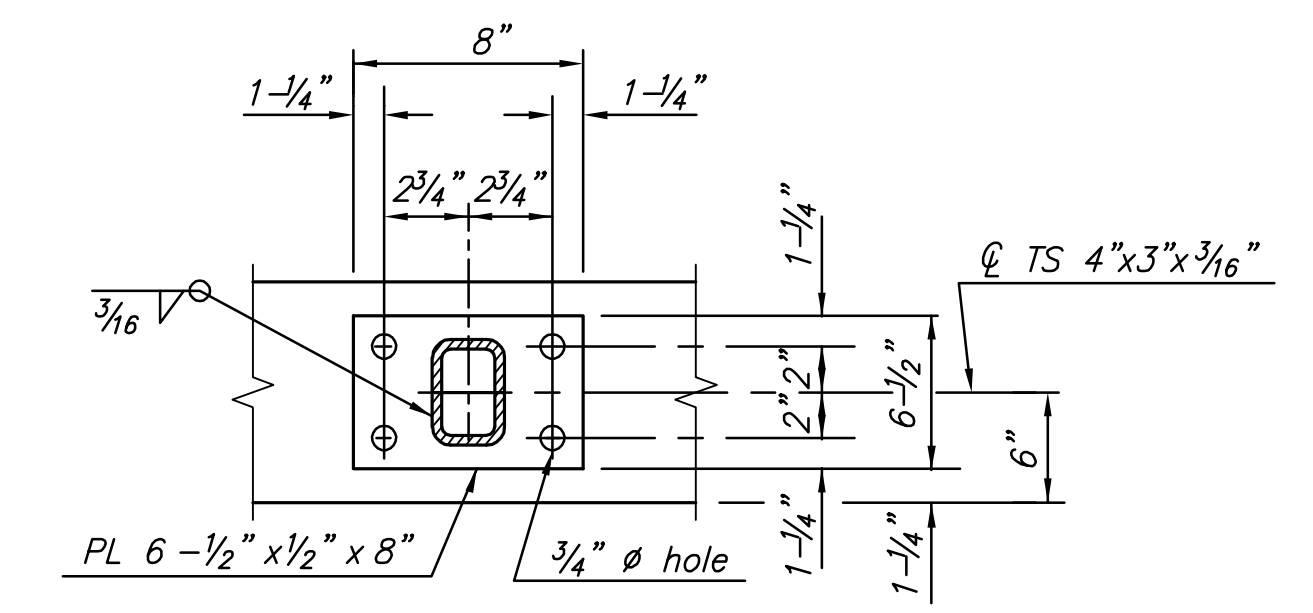
**TYPICAL RAIL SECTION**  
NO SCALE



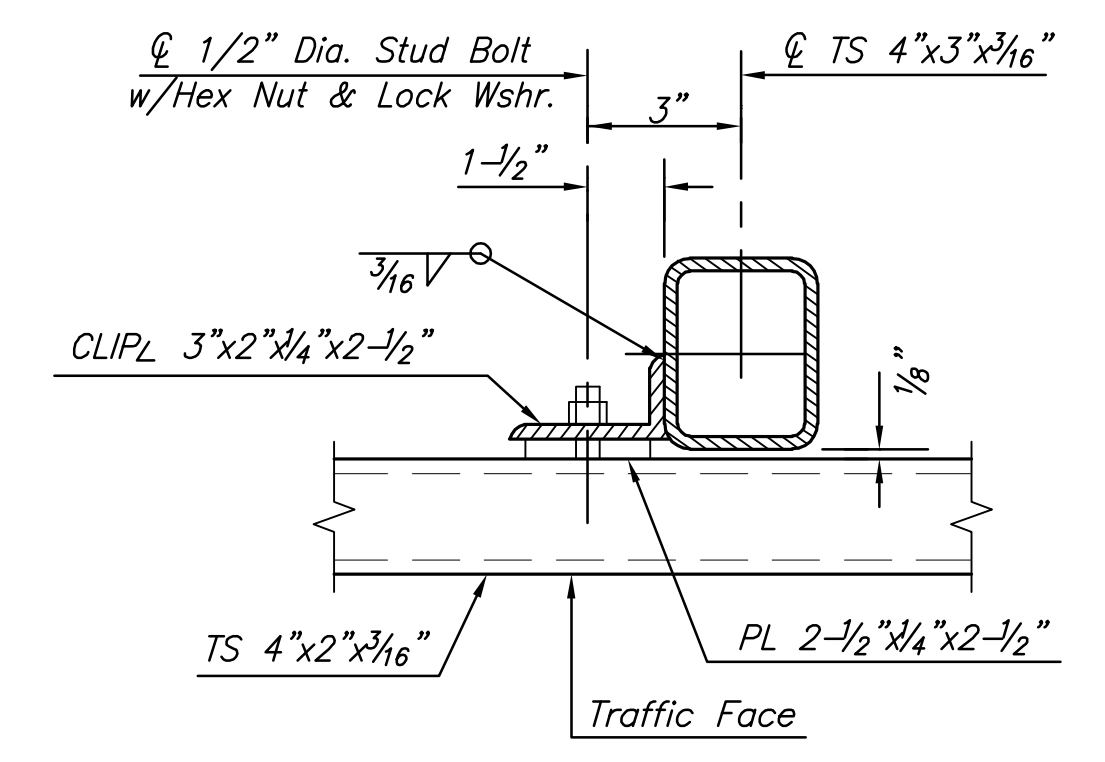
**TYPICAL PANEL DETAIL**



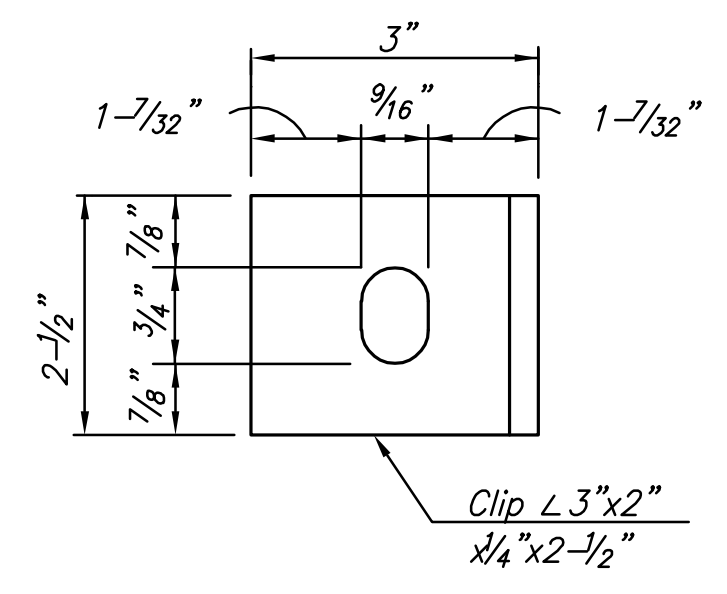
**SLEEVE DETAIL**  
(Bottom Rail Shown, Top Rail Similar)



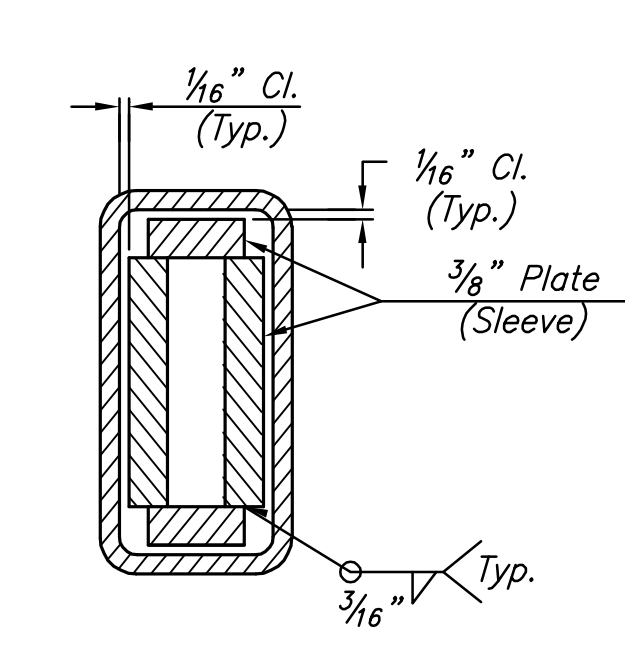
**BASE PLATE DETAIL**



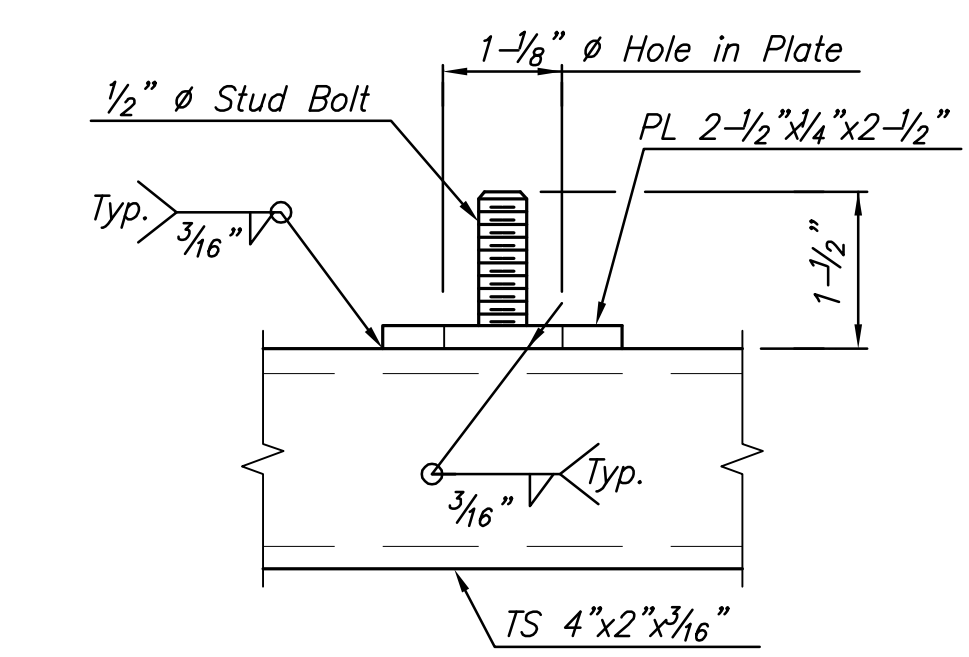
**RAIL CONNECTION DETAIL**



**CLIP DETAIL**



**SECTION B-B**



**STUD BOLT DETAIL**

STREET IMPROVEMENTS FOR  
**127TH STREET EAST**  
 FROM 13TH STREET NORTH TO 21ST STREET NORTH

©2017 MKEC Engineering All Rights Reserved  
 These drawings and their contents, including, but not limited to, all concepts, designs, & ideas are the exclusive property of MKEC Engineering (MKEC), and may not be used or reproduced in any way without the express consent of MKEC.

### "HANDRAIL, BICYCLE"

PROJECT NO.	472-85158	
DATE	11/29/17	
SCALE	NTS	
DESIGNED	DRAWN	CHECKED
JRA	DMU	JRA

NO.	REVISION	DATE
-----	----------	------

SHEET NO.

80 OF 183

PLOTTED: Wednesday, November 29, 2017 @ 03:07PM  
 J:\PROJECTS\2017\1401040280 - COW\_127THE\_13TH TO 21ST\05-CIVIL\CAD\WALL14280\DWG4.DWG