

J:\PROJECTS\2017\1401040290 - COM_127THE 13TH TO 21ST STS-CIVIL\CAO\BRIDGE\142802P01.DWG
 PLOTTED: Wednesday, November 29, 2017 9:03:29PM

STATE	PROJECT NO.	YEAR	SHEET NO.	TOTAL SHEETS
KANSAS	87 N-0615-01	2017	82	183



- PI Sta. 10+00.00 (127th St. E.) = SW Cor. Sec. 11, T27S, R2E
1. Found 5/8" rebar with Garber cap
 2. Chiseled "X" on se cor. conc. traffic signal pole base
 3. Chiseled "X" on southerly cor. of conc. traffic signal pole base
 4. Chiseled "X" on nw cor. of conc. traffic signal pole base
 5. Chiseled "X" on easterly cor. of conc. traffic signal pole base
 6. N=1694562.090, E=1691609.681

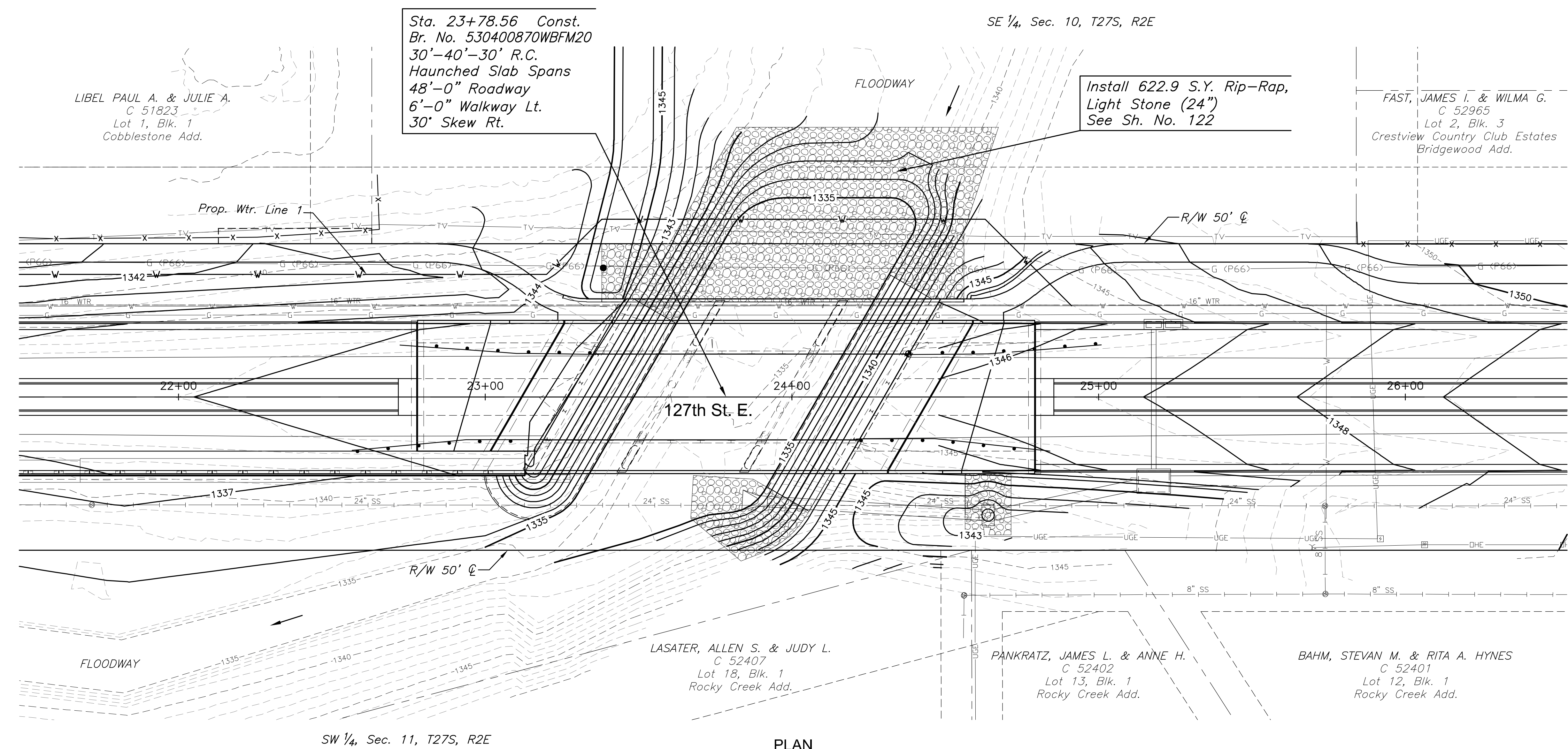
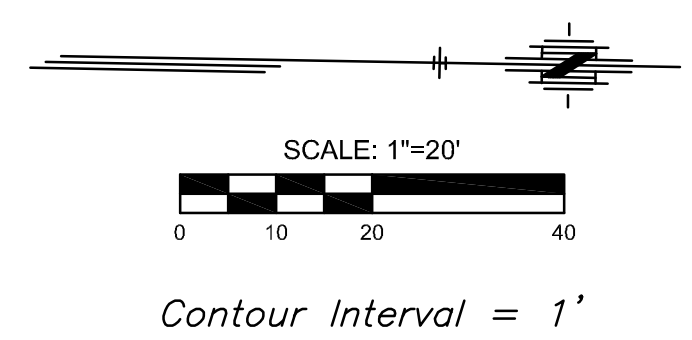
- 71.91' NW
- 72.35' NE
- 71.08' SE
- 68.57' SW

- Sta. 36+48.50 (127th St. E.) = W 1/4 Cor. Sec. 11, T27S, R2E
1. Found 1/2" rebar with 2" alum. cap stamped "MKEC CKS 39"
 2. PK nail & MKEC disc in N fc of PP
 3. Concrete nail & washer in S fc of meter pole
 4. 60d nail in W fc of S leg of H pole structure
 5. Mag nail in top of guard post
 6. N=1697209.960, E=1691551.888

- 49.40' ENE
- 49.68' NE
- 98.93' NNE
- 47.55' SW

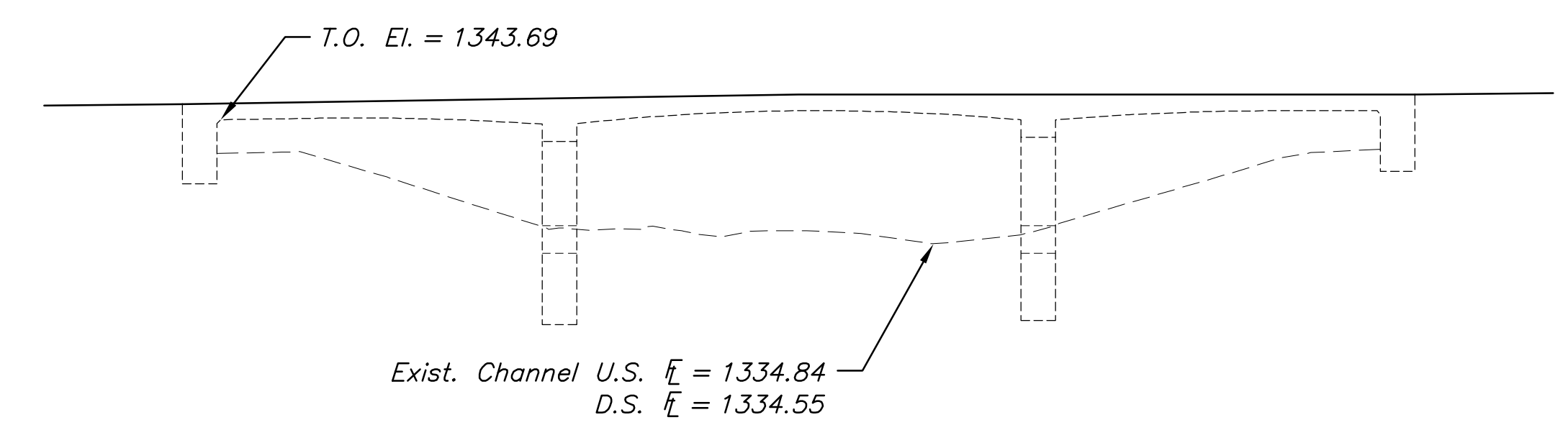
- Sta. 63+04.80 (127th St. E.) = NW Cor. Sec. 11, T27S, R2E
1. Found 1/2" pipe in thimble
 2. City of Wichita BM disc in conc. traffic signal base
 3. Chiseled "X" on top of curb
 4. Chiseled "X" on top of curb
 5. Chiseled "X" on top of curb
 6. N=1699865.966, E=1691512.073

- 70.98' NE
- 68.00' SE
- 69.17' NW
- 68.57' SW

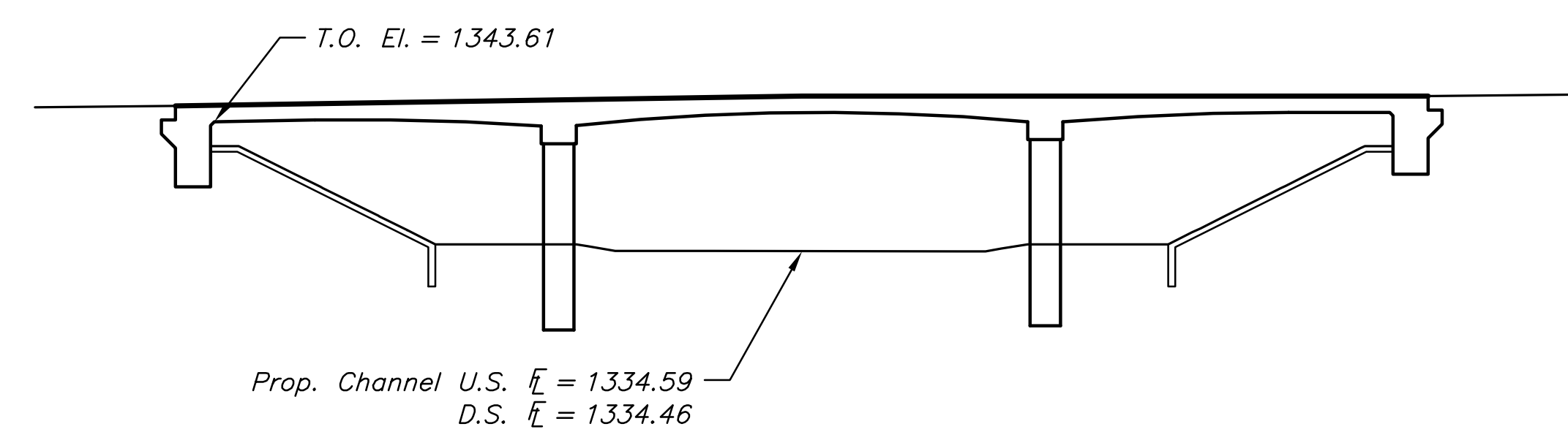


HIGHWATER INFORMATION
Highwater elevation is unavailable

STREET IMPROVEMENTS FOR
127TH STREET EAST
 FROM 13TH STREET NORTH TO 21ST STREET NORTH



EXISTING WEST BRANCH FOURMILE CREEK
 Waterway Opening of Exist. 30'-40'-30' RCSH (Upstream)
 At ϕ Sta. 24+04.3, 15' Lt. (127th St. E.)
 Area = 491.1 Sq. Ft. (Bridge)



EXISTING WEST BRANCH FOURMILE CREEK
 Waterway Opening of Prop. 30'-40'-30' RCSH (Upstream)
 At ϕ Sta. 23+97.0, 32' Lt. (127th St. E.)
 Area = 589.2 Sq. Ft. (Bridge)

©2017 MKEC Engineering
 All Rights Reserved
 www.mkec.com
 These drawings and their contents, including, but not limited to, all concepts, designs, & ideas are the exclusive property of MKEC Engineering (MKEC), and may not be used or reproduced in any way without the express consent of MKEC.

CONTOUR MAP

PROJECT NO.	472-85158	
DATE	11/29/17	
SCALE	1"=20'	
DESIGNED	DRAWN	CHECKED
KJS	DMU	KJS
NO.	REVISION	DATE

SHEET NO.