

LEGEND

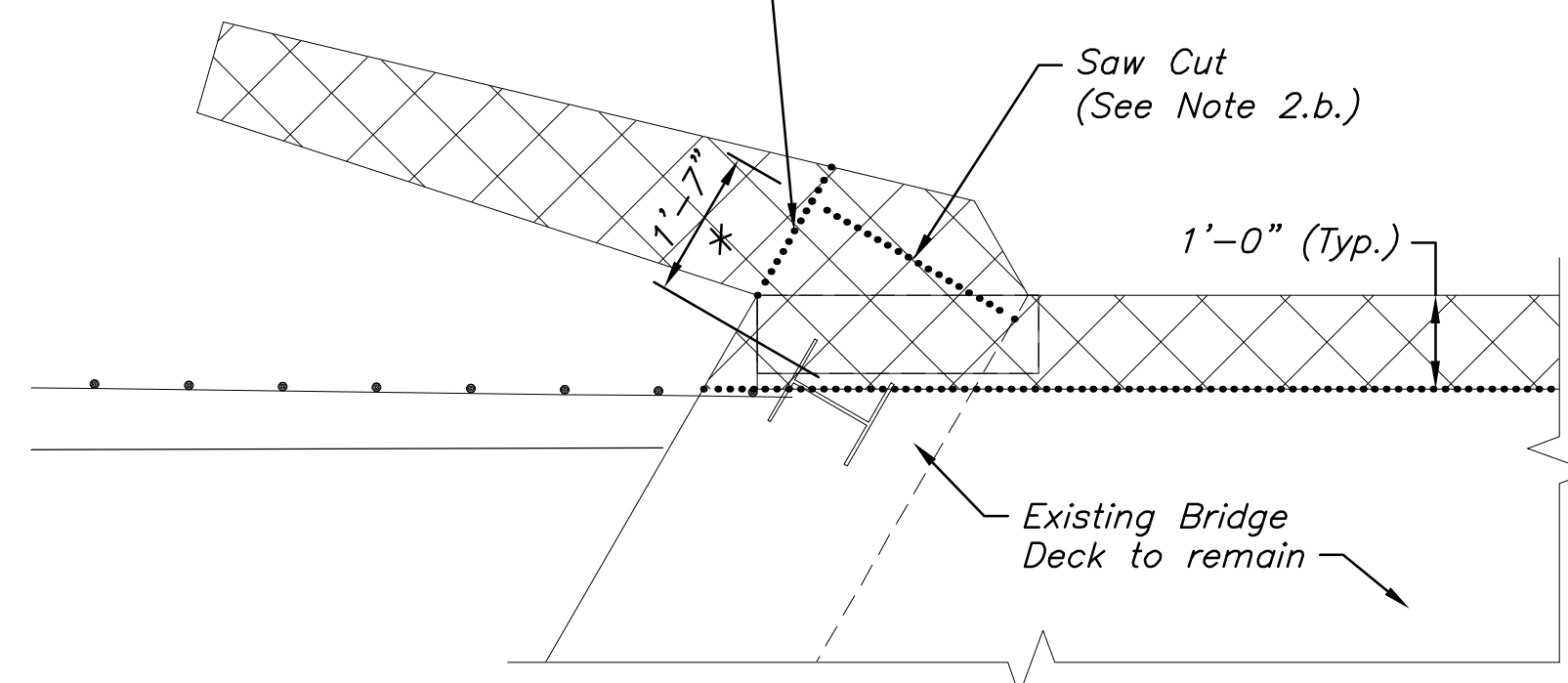
- Saw Cut Line
- XXXXX Demolition

DEMOLITION GENERAL NOTES

1. The Contractor shall remove portions of the bridge deck, wingwalls, and abutments as shown for demolition on the plan.
2. Demolition in all areas shall be accomplished in the following order:
 - 2.a. The existing corral rail may need to be removed first to accommodate longitudinal saw cuts on the existing bridge deck. This may be accomplished by performing a full depth saw cut through the existing corral rail posts parallel to the top surface of the existing bridge deck.
 - 2.b. The Contractor shall perform a one inch (1") deep saw cut at the Saw Cut Line locations represented on the plan. This includes the top and bottom of bridge deck, vertical and bottom faces of piers, and the exposed faces of abutments and wingwalls. The Contractor may perform full-depth saw cuts, only where noted, on the portions of wingwalls to be removed. Wing reinforcing that is not epoxy coated should be field cut to provide 2" clear.
 - 2.c. The Contractor shall complete demolition using low impact demolition methods. Use of jack hammers or chipping hammers heavier than the nominal 15-pound class will not be permitted. The Contractor shall use caution not to damage existing transverse reinforcing steel exposed during chipping operations. Partially exposed longitudinal reinforcing shall be removed. Additional chipping may be required in these areas. Existing concrete shall be removed to neat, uniform lines between saw cuts.
 - 2.d. Transverse reinforcing steel may be field cut to provide plan clearances. Cut ends of epoxy coated reinforcing steel or any other damage to epoxy coating on existing reinforcing steel to remain shall be repaired by the Contractor in accordance with KDOT Standard Specifications.
3. Immediately prior to casting new concrete, the existing concrete surface shall be prepared as noted in "PREPARATION OF EXISTING CONCRETE" on sheet B1.

DEMOLITION PLAN

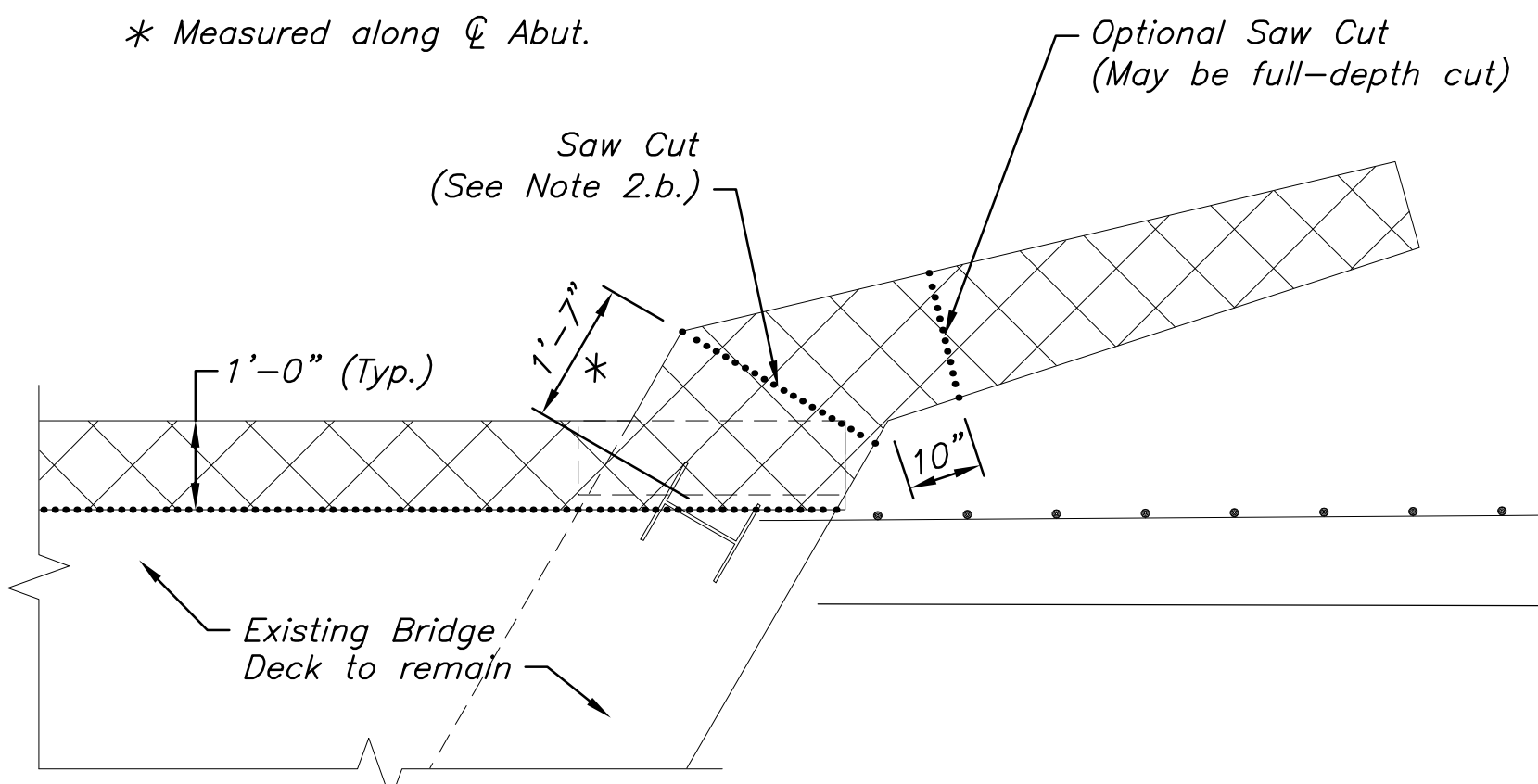
Saw Cut parallel to back face of abutment (May be full-depth cut) * Measured along \varnothing Abut.



DETAIL A

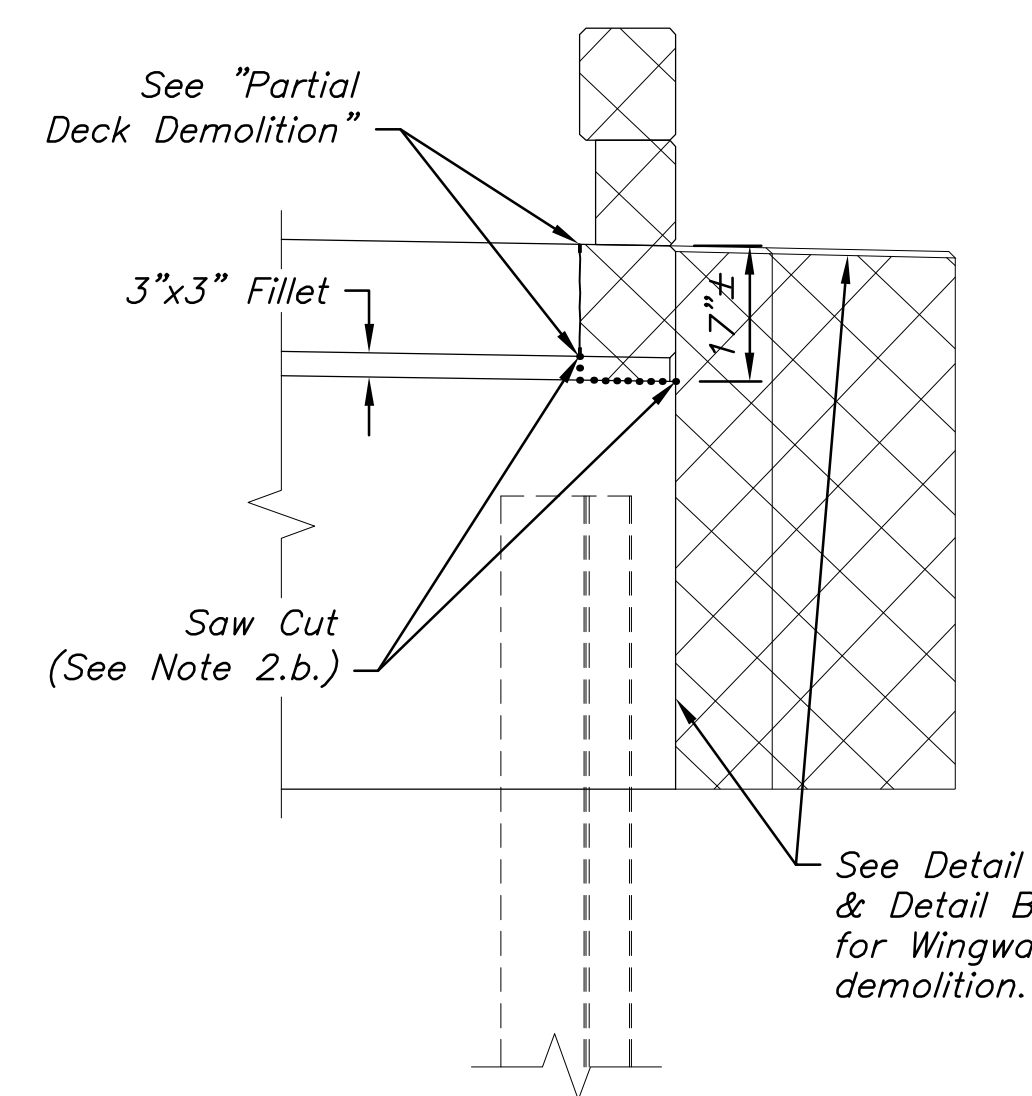
(Southwest Wing shown, Northeast Wing identical)

* Measured along \varnothing Abut.



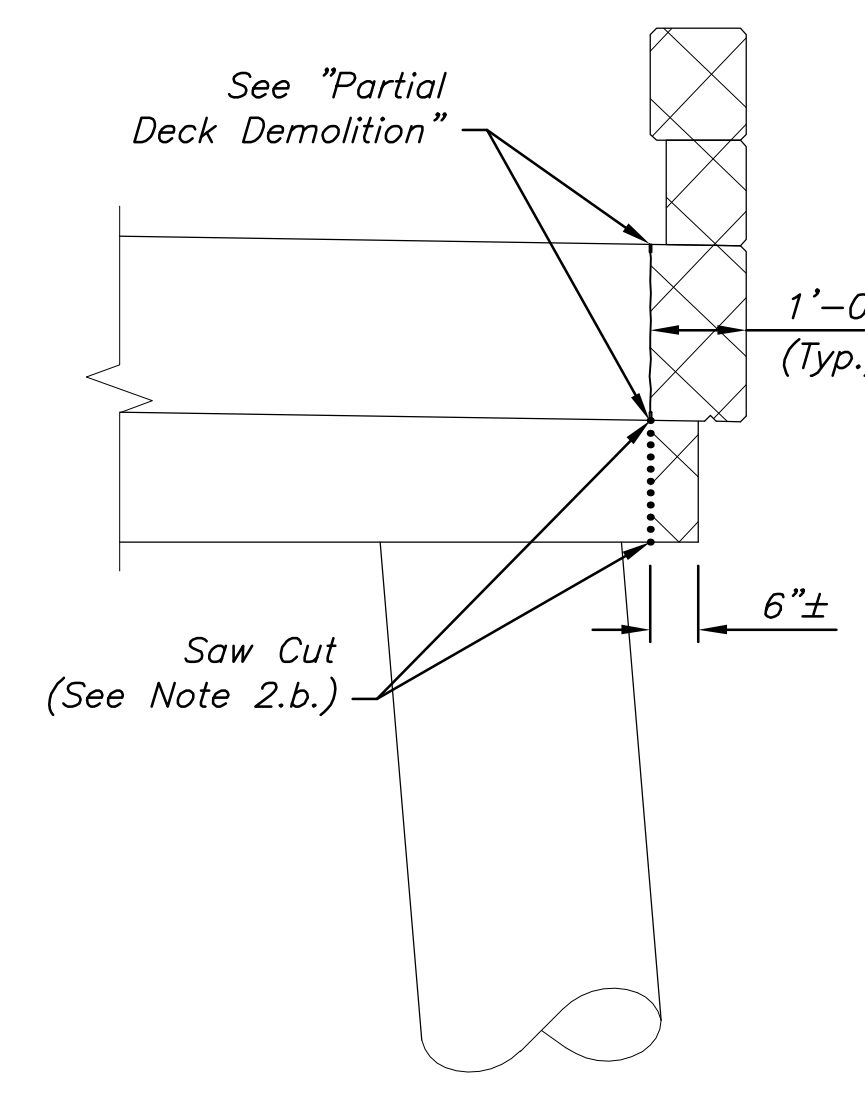
DETAIL B

(Northwest Wing shown, Southeast Wing identical)



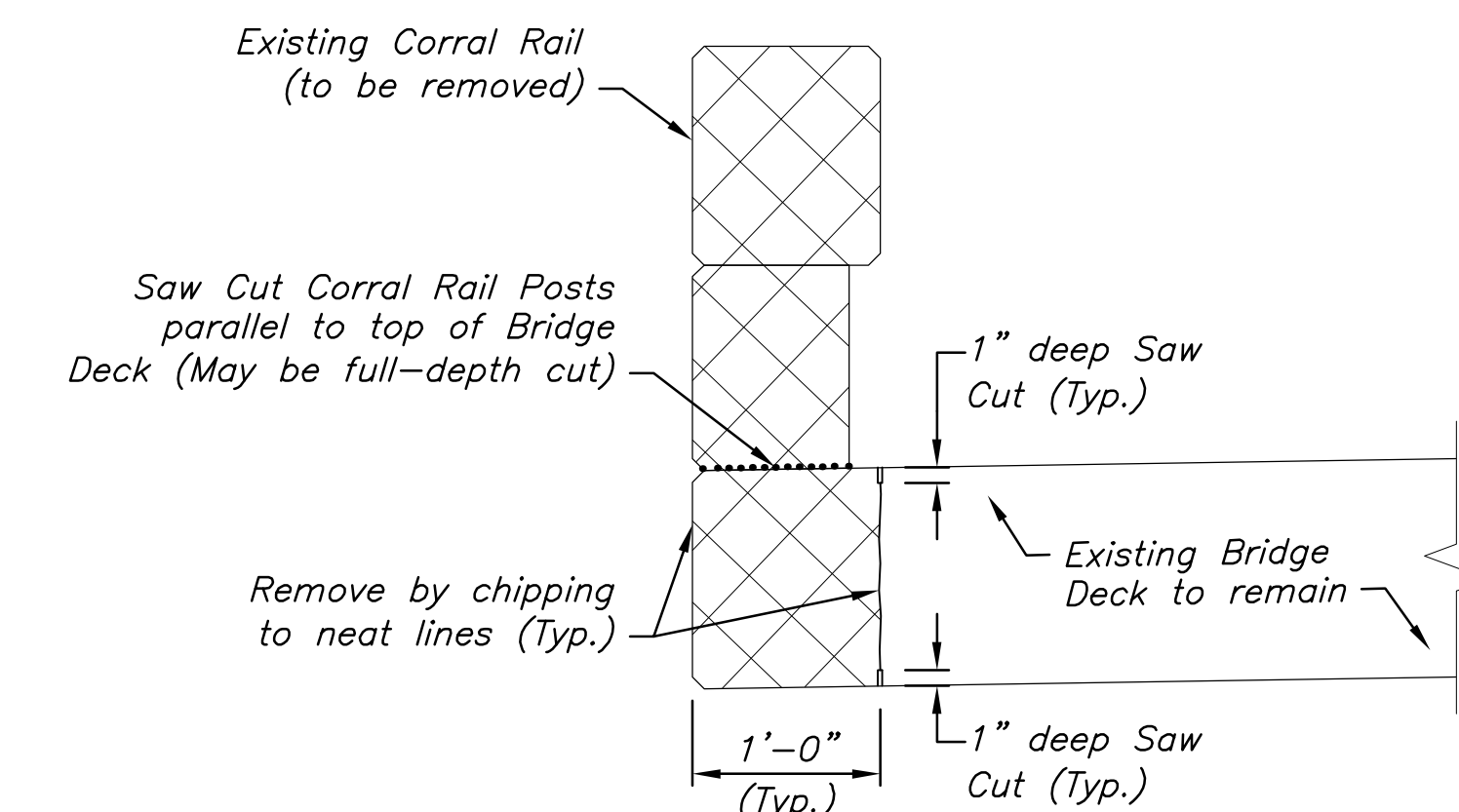
ELEVATION AT ABUTMENTS

(Shown Perpendicular to \varnothing Prop. Impr.)
(Looking North at Northeast Wing, Looking South at Southwest Wing, Other Wings mirrored but similar)



ELEVATION AT PIERS

(Shown Perpendicular to \varnothing Prop. Impr.)
(Phase 2 - Looking South, Phase 3 - Looking North)



PARTIAL DECK DEMOLITION

(Typical Section, Shown Perpendicular to \varnothing Prop. Impr.)
(Phase 2 - Looking North, Phase 3 - Looking South)

©2017 MKEC Engineering All Rights Reserved
www.mkec.com
These drawings and their contents, including but not limited to, all concepts, designs, & ideas are the exclusive property of MKEC Engineering (MKEC), and may not be used or reproduced in any way without the express consent of MKEC.

BRIDGE DEMOLITION PLAN

PROJECT NO.	472-85158	
DATE	11/29/17	
SCALE	AS SHOWN	
DESIGNED	DRAWN	CHECKED
KJS	DMU	KJS

NO.	REVISION	DATE

SHEET NO.