

STATE	PROJECT NO.	YEAR	SHEET NO.	TOTAL SHEETS
KANSAS	87 N-0615-01	2017	98	183

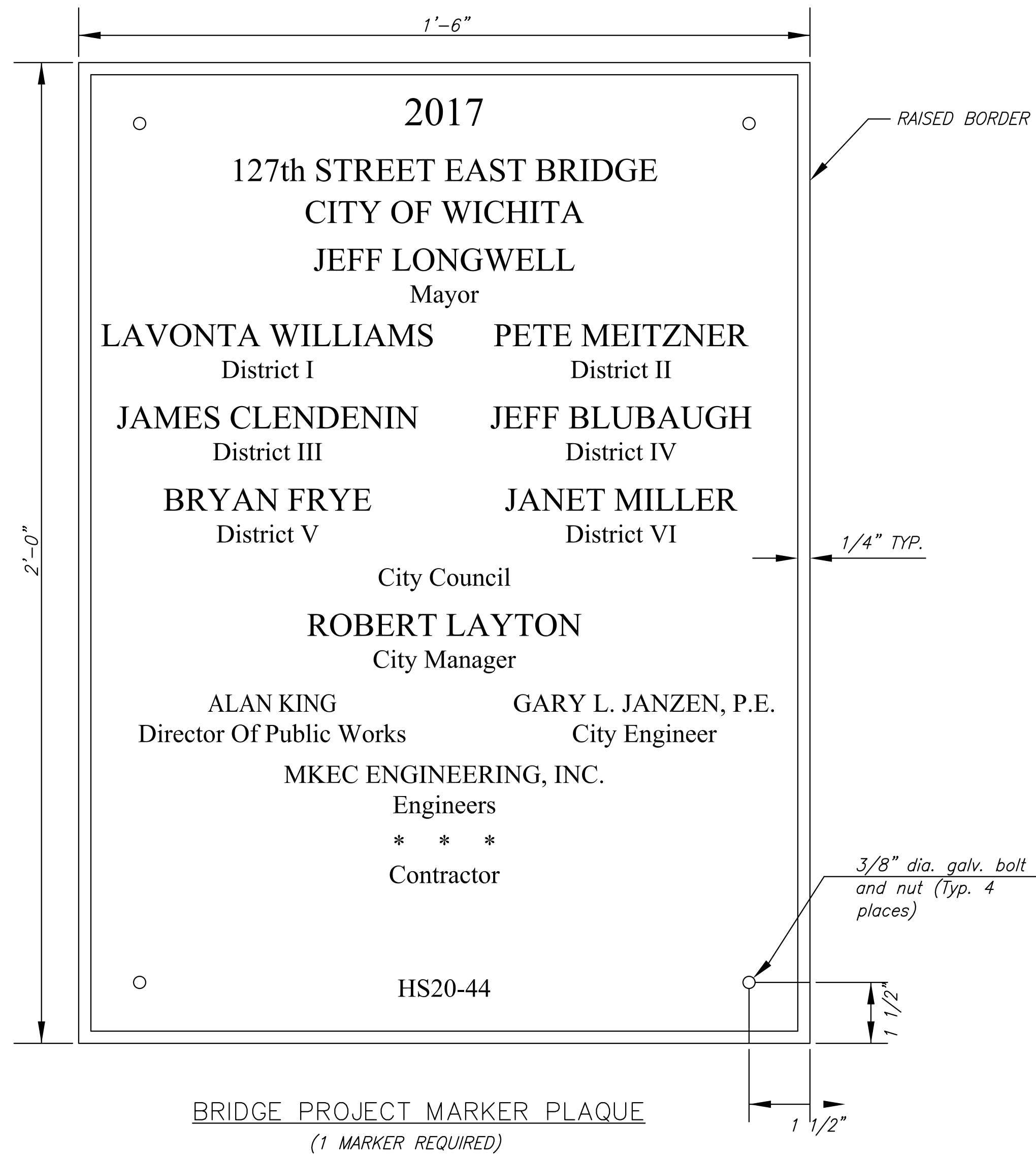


PROJECT MARKER		
LOCATION #	NOTES	BRIDGE
Sta. 23+48.4, 31' Lt.	New Plaque (Non-Participating)	Phase 2

≠ Locations shown for information only. Actual plaque mounting locations to be field located.

NOTES:

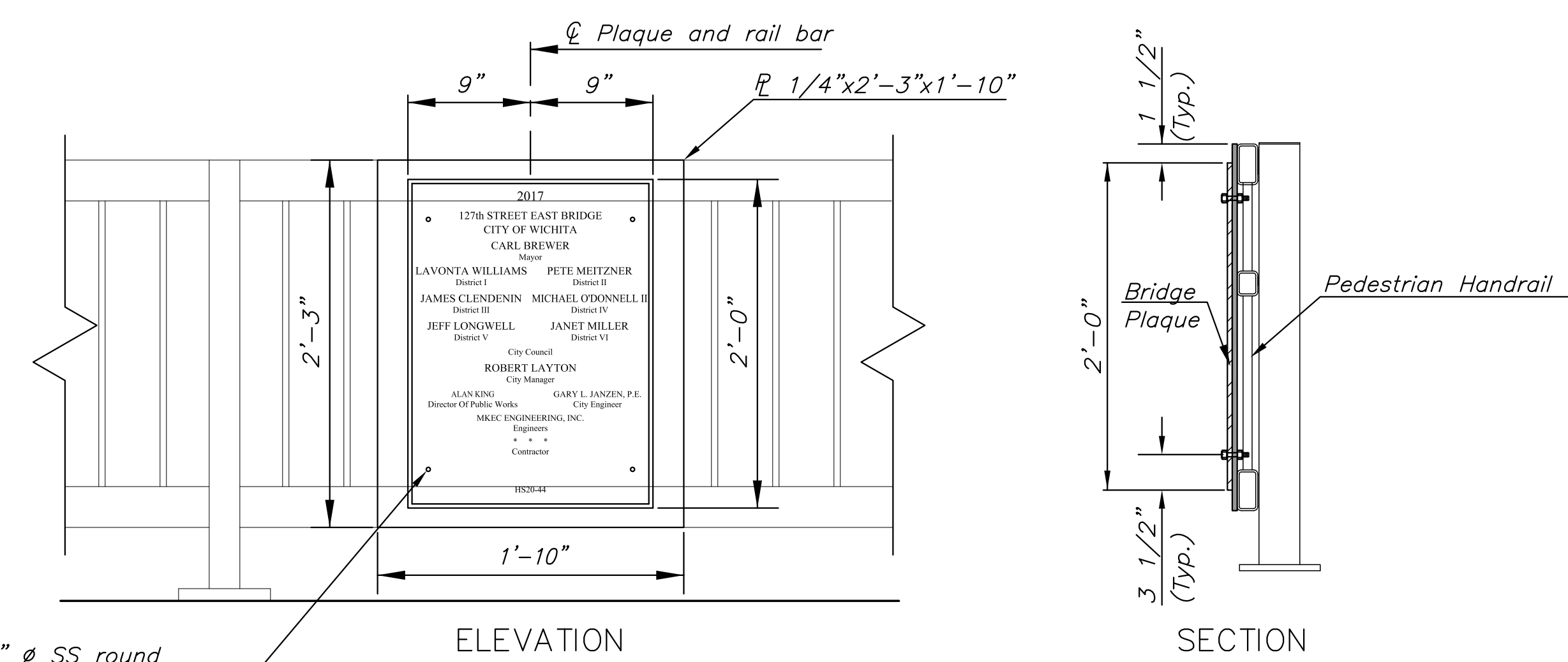
Contractor to furnish a rubbing of the Bridge Project Plaque to the Engineer for approval before casting. Project Bridge Plaque shall conform to applicable requirements of Sub-section 1625 of the Kansas Dept. of Transportation Standard Specifications. Plaque shall be manufactured such that it can be attached to pedestrian handrail.



BRIDGE PROJECT MARKER PLAQUE  
(1 MARKER REQUIRED)

\* \* \* NAME OF CONTRACTOR

NOTE: Information my need to be revised prior to casting.



PLAQUE MOUNTING ON HANDRAIL (PEDESTRIAN)

SS 1/2" # SS round headed cap screw w/SS washer & nut threads, peen threads to prevent removal (Typ. 4 places).

STREET IMPROVEMENTS FOR  
**127TH STREET EAST**  
FROM 13TH STREET NORTH TO 21ST STREET NORTH

©2017 MKEC Engineering All Rights Reserved  
www.mkec.com  
These drawings and their contents, including, but not limited to, all concepts, designs, & ideas are the exclusive property of MKEC Engineering (MKEC), and may not be used or reproduced in any way without the express consent of MKEC.

BRIDGE PLAQUE DETAILS

PROJECT NO.	472-85158	
DATE	11/29/17	
SCALE	NTS	
DESIGNED	DRAWN	CHECKED
JRA	LES	JRA

NO.	REVISION	DATE

SHEET NO.  
98 OF 183

J:\PROJECTS\2017\1401040290 - COM\_127TH E 13TH TO 21ST\05-CIVIL\CAD\BRIDGE\14290\_PLAQUES.DWG  
PLOTTED: Wednesday, November 29, 2017 @ 04:55PM