

# Paving & Stormwater Improvements to serve

## 29TH STREET from Boulder Drive to 127th Street

&

## 127TH STREET from 29th Street to 27th Street

# CITY OF WICHITA, KANSAS

Gary Janzen, P.E. City Engineer

Project Number

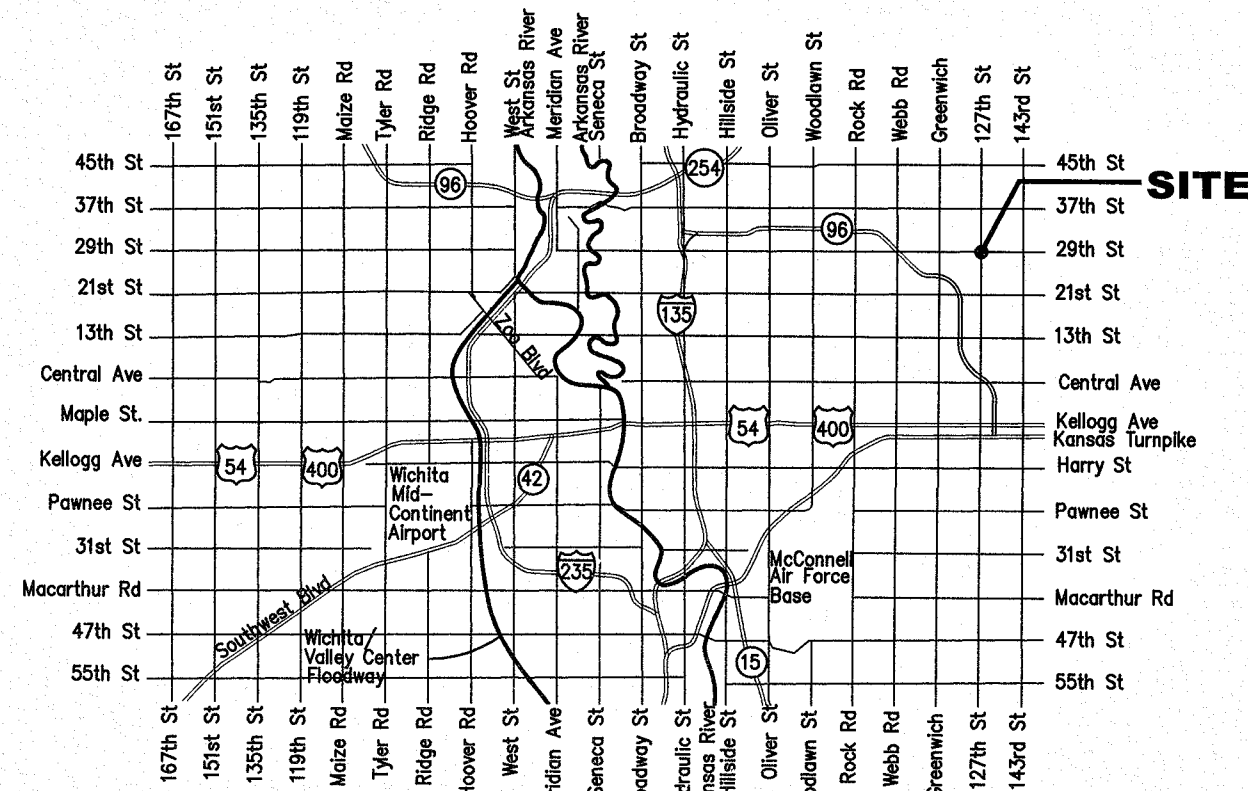
472-85341

OCA Number

707121

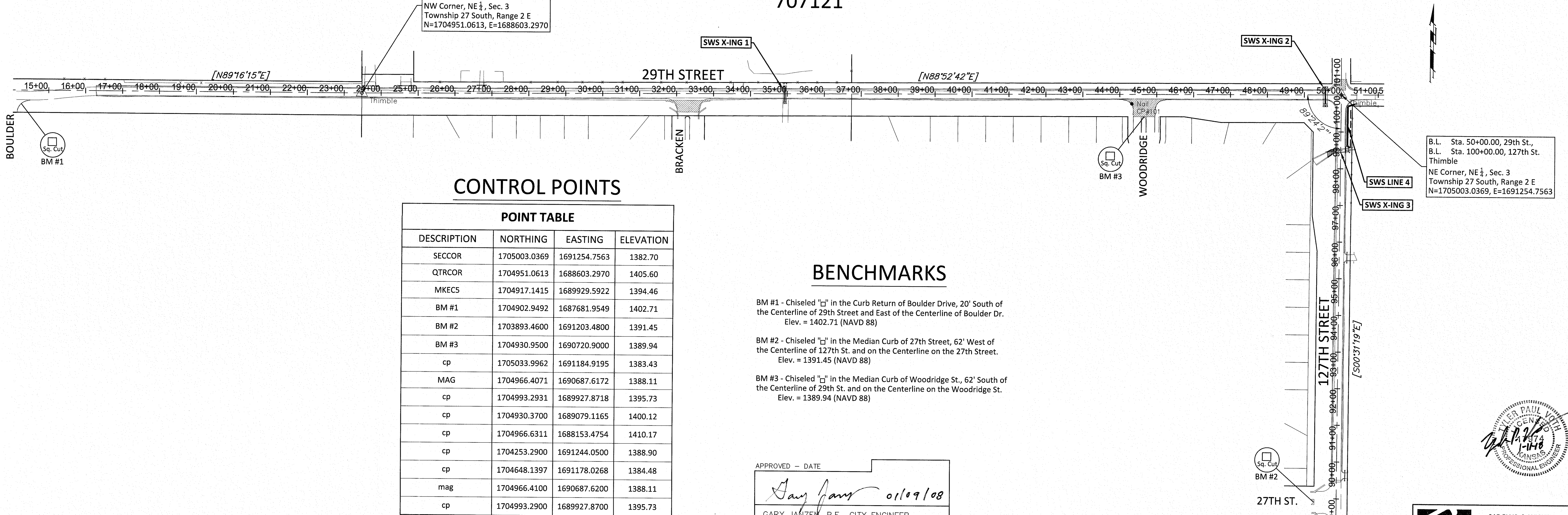
### SHEET INDEX

- 1 Title Sheet
- 2 General Notepage
- 3 Typical Paving Sections
- 4-10 29th Street Paving Plans
- 11-12 127th Street Paving Plans
- 13 Intersection Details
- 14-17 Storm Water Sewer Plan & Profiles
- 18 Pavement Marking & Signing Plan
- 19 Sign Details
- 20 Traffic Control Plan
- 21-24 Traffic Control Details
- 25 Erosion Control Plan
- 26-30 BMP Details
- 31-39 Cross Sections & Volume Tables



VICINITY MAP

B.L. Sta. 23+48.03, 29th St.  
Thimble  
NW Corner, NE 1/4, Sec. 3  
Township 27 South, Range 2 E  
N=1704951.0613, E=1688603.2970



### CONTROL POINTS

DESCRIPTION	NORTHING	EASTING	ELEVATION
SECCOR	1705003.0369	1691254.7563	1382.70
QTRCOR	1704951.0613	1688603.2970	1405.60
MKEC5	1704917.1415	1689929.5922	1394.46
BM #1	1704902.9492	1687681.9549	1402.71
BM #2	1703893.4600	1691203.4800	1391.45
cp	1705033.9962	1691184.9195	1383.43
MAG	1704966.4071	1690687.6172	1388.11
cp	1704993.2931	1689927.8718	1395.73
cp	1704930.3700	1689079.1165	1400.12
cp	1704966.6311	1688153.4754	1410.17
cp	1704253.2900	1691244.0500	1388.90
cp	1704648.1397	1691178.0268	1384.48
mag	1704966.4100	1690687.6200	1388.11
cp	1704993.2900	1689927.8700	1395.73

### BENCHMARKS

BM #1 - Chiseled "□" in the Curb Return of Boulder Drive, 20' South of the Centerline of 29th Street and East of the Centerline of Boulder Dr.  
Elev. = 1402.71 (NAVD 88)

BM #2 - Chiseled "□" in the Median Curb of 27th Street, 62' West of the Centerline of 127th St. and on the Centerline on the 27th Street.  
Elev. = 1391.45 (NAVD 88)

BM #3 - Chiseled "□" in the Median Curb of Woodridge St., 62' South of the Centerline of 29th St. and on the Centerline on the Woodridge St.  
Elev. = 1389.94 (NAVD 88)

APPROVED - DATE  
*Gary Janzen* 01/09/08  
GARY JANZEN, P.E., CITY ENGINEER  
CITY OF WICHITA, KANSAS

