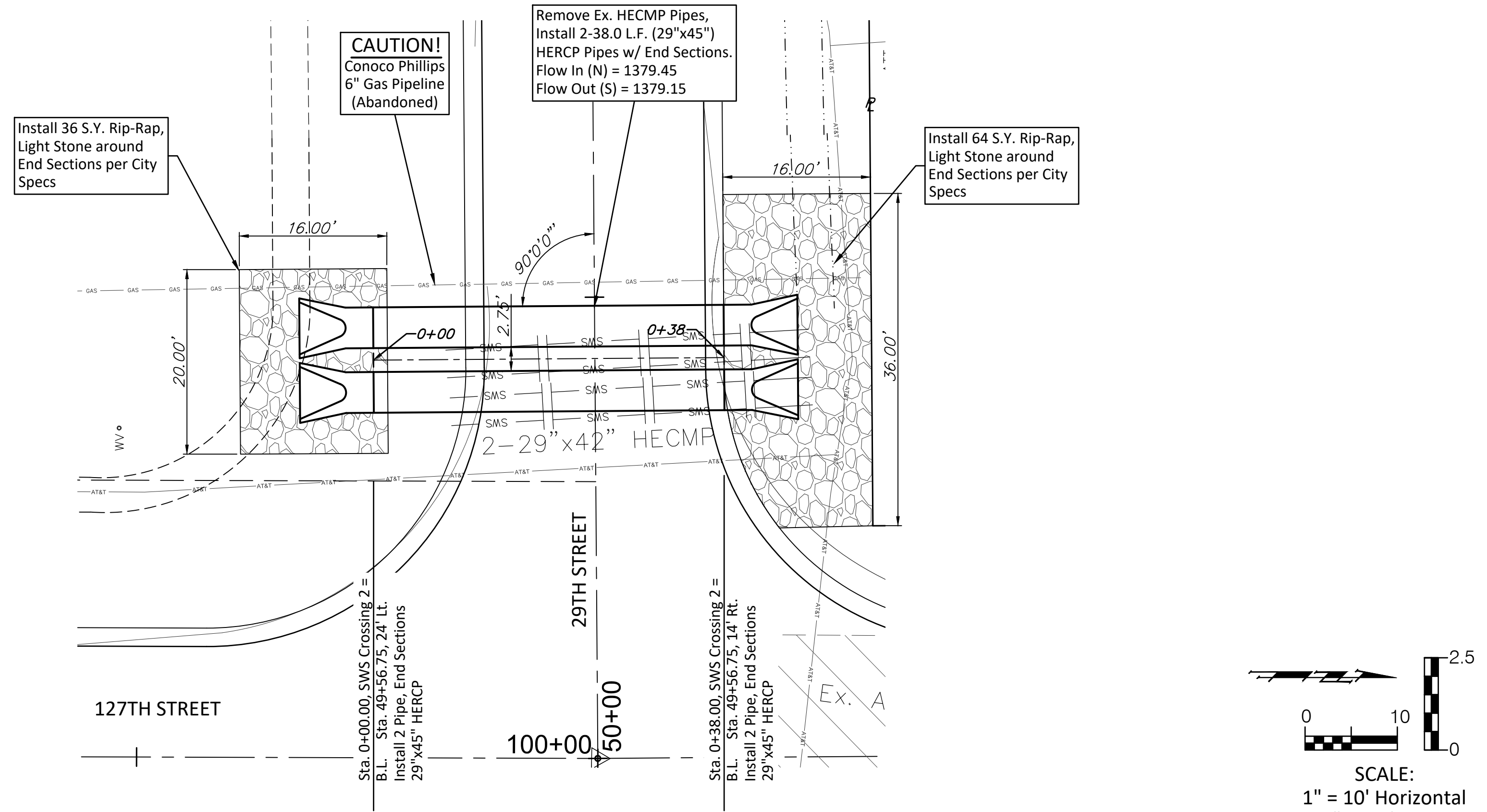
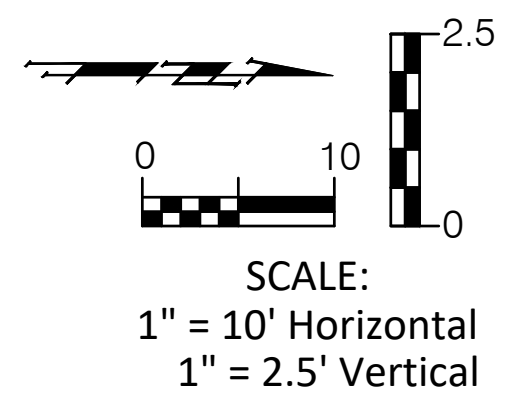
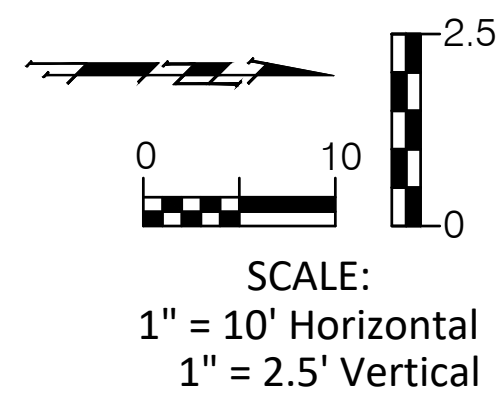


SWS CROSSING 1



SWS CROSSING 2



1405				1405
1400		Sta. 0+00.00, SWS Crossing 1 = Install 2 Pipe, End Sections 30"		1400
1395		Sta. 0+24+00, SWS Crossing 1 = Street Centerline		1395
1390		Sta. 0+36+00, SWS Crossing 1 = Install 2 Pipe, End Sections 30"		1390
1385		Sta. 0+38.00, SWS Crossing 2 = Install 2 Pipe, End Sections 29"x45" HERCP		1385
		<p>Proposed Section Existing Grade</p> <p>2-36.00 LF 30" RCP @ +0.833%</p> <p>Ex. U/G AT&T</p>		
	FL Out (S) = 1389.90		FL In (N) = 1390.20	

1390				1390
1385		Sta. 0+00.00, SWS Crossing 2 = Install 2 Pipe, End Sections 29"x45" HERCP		1385
1380		Sta. 0+24+00, SWS Crossing 2 = Street Centerline		1380
1375		Sta. 0+38.00, SWS Crossing 2 = Install 2 Pipe, End Sections 29"x45" HERCP		1375
		<p>Proposed Section Existing Grade</p> <p>2-38.00 LF 29"x45" HERCP @ +0.789%</p>		
	FL Out (S) = 1379.15		FL In (N) = 1379.45	