

LAT. 13, MAIN 18, FMC

to serve

Casa Bella 2nd - Phase 4

CITY OF WICHITA, KANSAS

Gary Janzen, P.E. City Engineer
Project Number 468-85163
O.C.A. NO. 744432

Utility Solutions of Kansas - Contractor
J. Brand - City of Wichita, Field Project Engineer
S. May - City of Wichita, Inspector
Stub & Risers
Completion Date: 2/8/2018
pdf: 9/20/2017 apr

GENERAL NOTES:

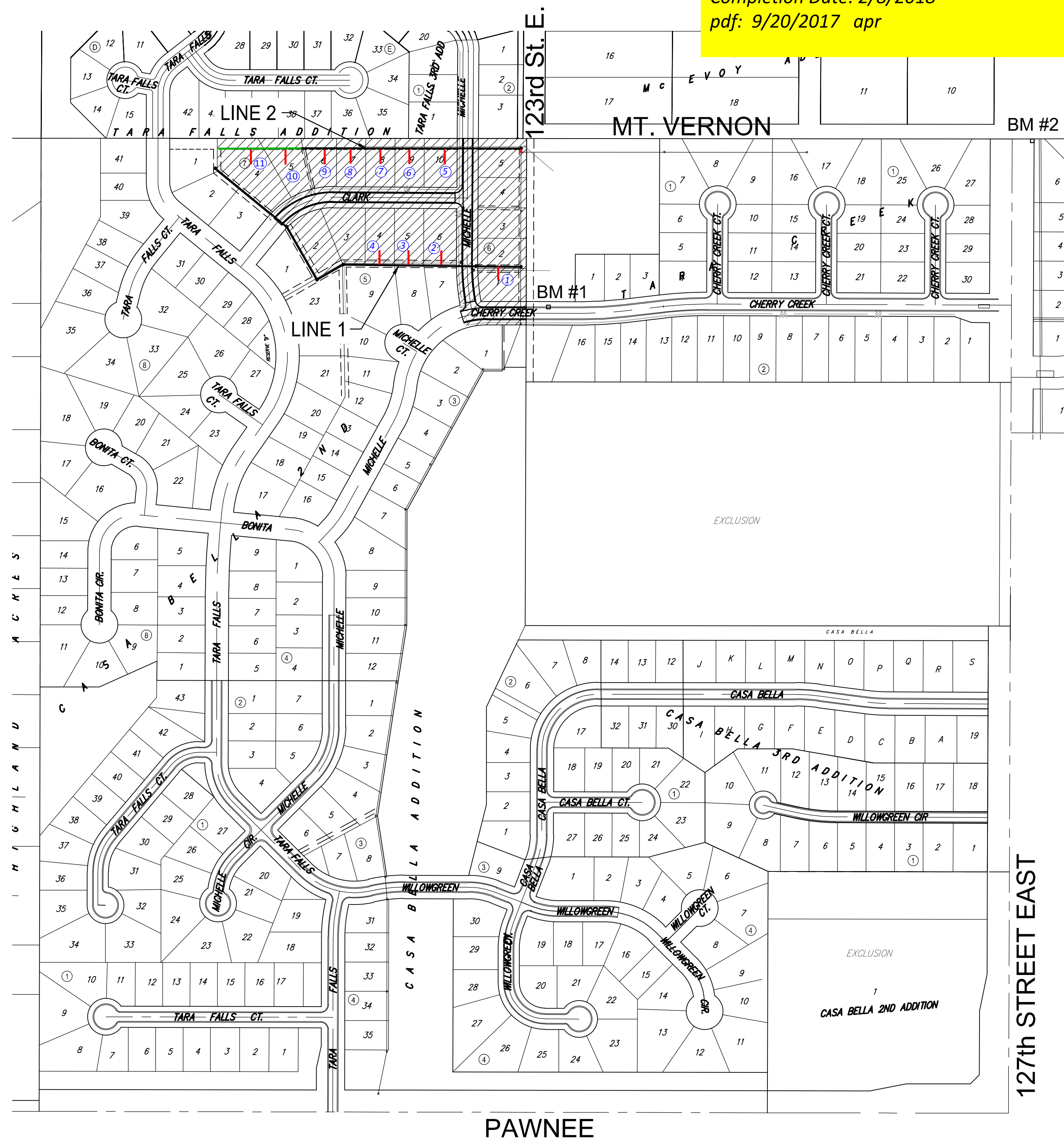
- The Contractor shall comply with all applicable safety regulations. All construction shall be completed following current City Standard Specifications and Special Provisions.
- Contractor will be required to provide notice to utility companies a minimum of seventy-two (72) hours prior to any excavation, as follows:
Kansas One-Call 687-2470
The Contractor must notify the following in case of an emergency:
Cox Communications 260-7204
Kansas Gas Service 1-888-482-4950
Black Hills Energy 941-1628
Westar 383-8600
AT&T 1-800-286-8313
City of Wichita Water Department 262-6000
City of Wichita Sewer Maintenance 262-6000
- Utility service lines, poles, etc. are to be adjusted as necessary by others prior to construction unless the plans specifically call for their adjustment by the Contractor or unless the plans specifically identify a utility to be adjusted by its owner during construction. Existing utilities and their location, as shown on the plans, represent the best information obtainable for design. The Contractor will be required to work around existing utilities within the right-of-way which do not conflict with proposed construction.
- Rubble from the removal of miscellaneous structures and excess excavation which is to be wasted shall be disposed of on sites to be provided by the Contractor. These sites shall be approved by the Engineer as to suitability, appearance and site location. Locations, in the opinion of the Engineer, that will leave an unsightly appearance will not be approved. All disposal sites must be approved by the Kansas Department of Health and Environment. Material either stockpiled or disposed of in a flood plain will require a Kansas State Board of Agriculture permit. Any material dumped in waters of the United States or wetlands is subject to U.S. Corps. of Engineers permitting regulations. Any material buried or stockpiled beyond approved construction limits will require additional archaeological investigations unless buried in a previously approved borrow location.
- Trees and shrubs in public right-of-way which are in direct conflict with proposed new construction shall be removed by the Contractor with the Engineer's approval. Trees and shrubs which are not in direct conflict with proposed new construction shall be saved and protected from damage.
- The Contractor shall give all property owners and/or tenants of developed property abutting the construction of this project a minimum of ten (10) days notice prior to start of construction.
- The Contractor shall be responsible for preserving property irons. The Contractor will be required to re-establish any property irons which are damaged or destroyed by his construction operations. Such irons shall be re-established by a licensed land surveyor in accordance with state laws.
- If traffic will be impacted by construction, a traffic control plan must be submitted and approved by the City Traffic Engineer, Brian Coan at traffic@wichita.gov before construction can begin. The Contractor shall be responsible for all traffic control measures to facilitate construction. All construction zone markings and signage shall conform to the latest version of the Manual on Uniform Traffic Control Devices (MUTCD) as published by the US Dept. of Transportation, Federal Highway Administration. All costs associated with construction markings and signage shall be the Contractors responsibility.
- All elevations shown are NAVD 88.
- All areas disturbed during construction that will not be under proposed pavement shall be restored to match existing conditions.
- The Contractor shall protect from damage and support existing utilities through constructions as approved by the utility owner and the Engineer at the contractors expense.
- Contractor shall limit the extent of trench openings overnight and weekends to less than 50 feet.
- Any sidewalk, drive approach, curb, or street pavement removed to construct project must have a pavement cut permit and be replaced by the City contractor. Permits can be obtained by calling 316-268-4501 or 316-268-4480.
- All stubs and plugged pipes shall be located with green plastic tape in the same manner as risers.

- Connecting to Existing Manholes:
Prior to laying sewer lines using existing stubs in existing manholes, the Contractor shall expose and verify the elevation, grade and alignment of existing stubs and notify the Engineer of any deviation from the plans. Where connection to an existing manhole that does not have an existing stub or the stub is unusable due to elevation grade or alignment, the Contractor shall bore cut into existing manhole wall to make connection using approved water stop gasket, and reshape the existing manhole invert to provide smooth flow. The cost to connecting to existing manholes is incidental to the project.
- Contractor shall provide positive drainage away from all manhole covers.
- The Contractor shall prevent any construction debris from entering the existing sanitary sewer during construction.
- The Contractor shall be responsible for maintaining continuous flow of sewage through construction. Contractors proposed method for maintaining sewage flow shall be submitted and approved by the Sewer Maintenance Division (316-268-4073) prior to starting and by-passing of sewage flows.
- Any over excavation from manhole and pipe removal shall be backfilled with AB-3 compacted to 90-95% ASTM D698.

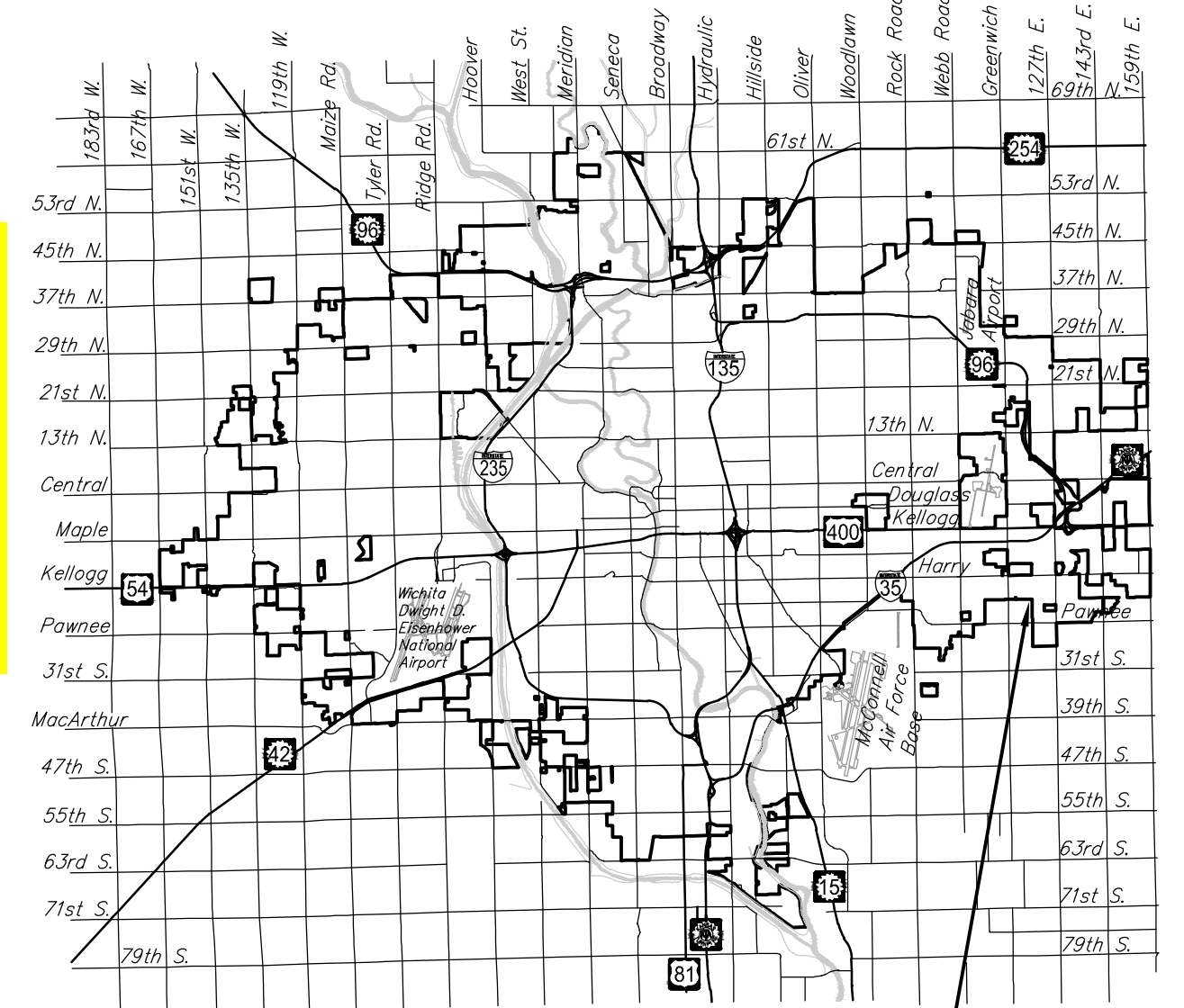
Benchmarks

BENCHMARK #1
CHISELED SQUARE ON THE TOP OF CURB ON N. SIDE OF CHERRY CREEK 40'± E. OF END OF PAVEMENT, EAST SIDE OF INLET.
ELEVATION = 1339.26 (NAVD88)

BENCHMARK #2
RB BRASS DISC, EAST SIDE OF 127TH & MT. VERNON 55.45' E. & 5.13' S. OF THE NW COR. OF THE SW ¼ OF SEC. 35, T27S, R2E.
ELEVATION = 1348.80 (NAVD88)



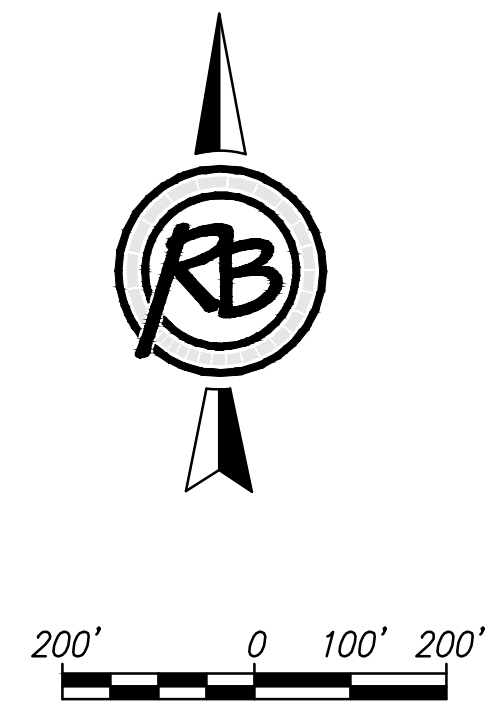
IMPROVEMENT DISTRICT



Vicinity Map PROJECT LOCATION

Sheet Index

Sheet Title
1 SS Titlesheet
2 Plan & Profile - Line 1
3 SS-2 (Existing) Risers
4 Pre-Cast SS MH
5 MH Frame & Cover
6 Vertical Riser
7 Erosion Control Plan
8 BOC
9 Silt Fc
10 Straw Bale
11 SIP
12 SDP
13 SS-Bubble Map
14 Addition Bubble Map
15 Casa Bella Plat



January 2017



LAT. 13, MAIN 18, FMC

to serve

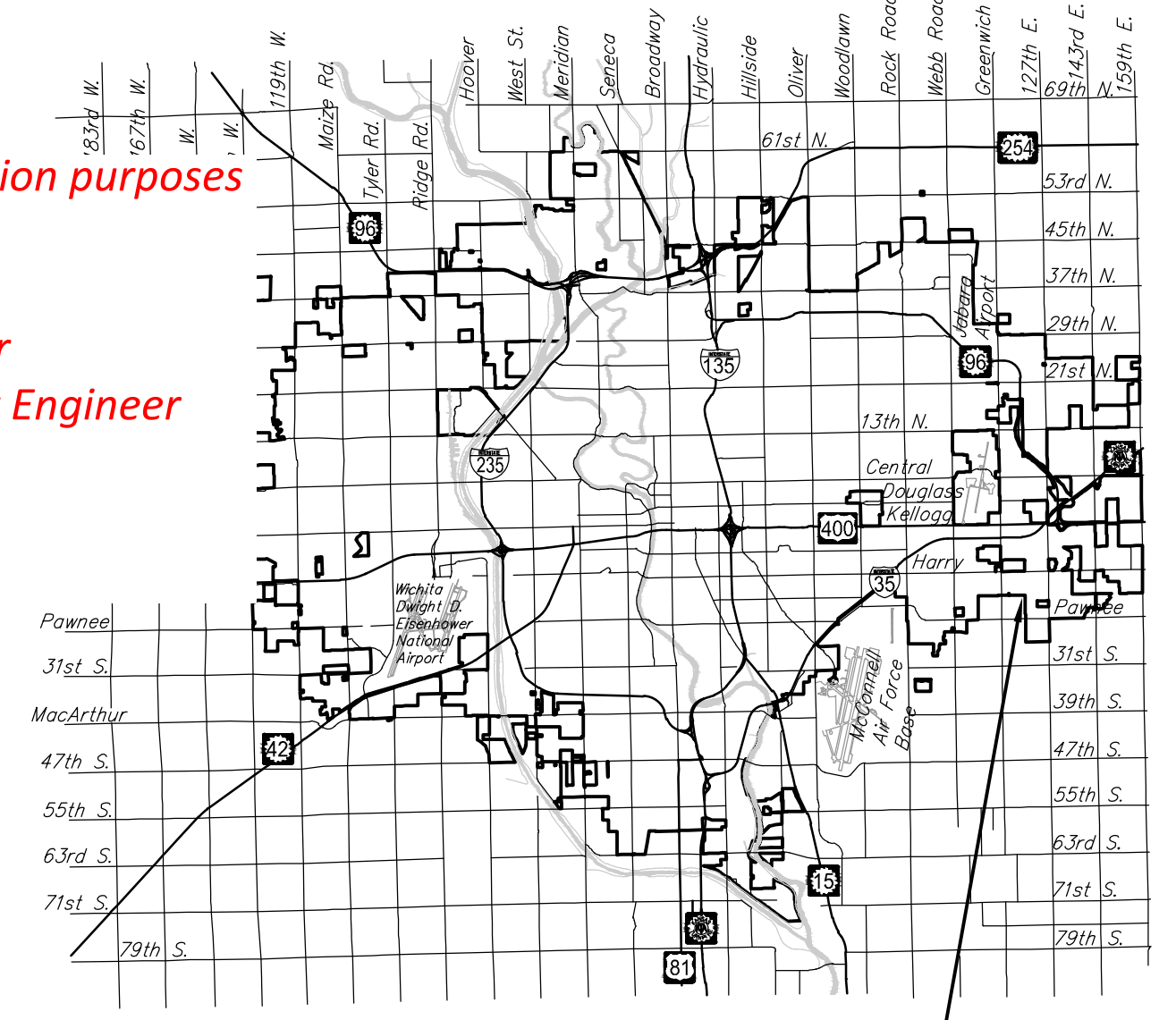
Casa Bella 2nd - Phase 4

CITY OF WICHITA, KANSAS

Gary Janzen, P.E. City Engineer
Project Number 468-85163
O.C.A. NO. 744432

NOTE: Preliminary release for connection purposes only. 9/12/2017

Utility Solutions of Kansas - Contractor
J. Brand - City of Wichita, Field Project Engineer
S. May - City of Wichita, Inspector
Stub & Risers



Vicinity Map PROJECT LOCATION

GENERAL NOTES:

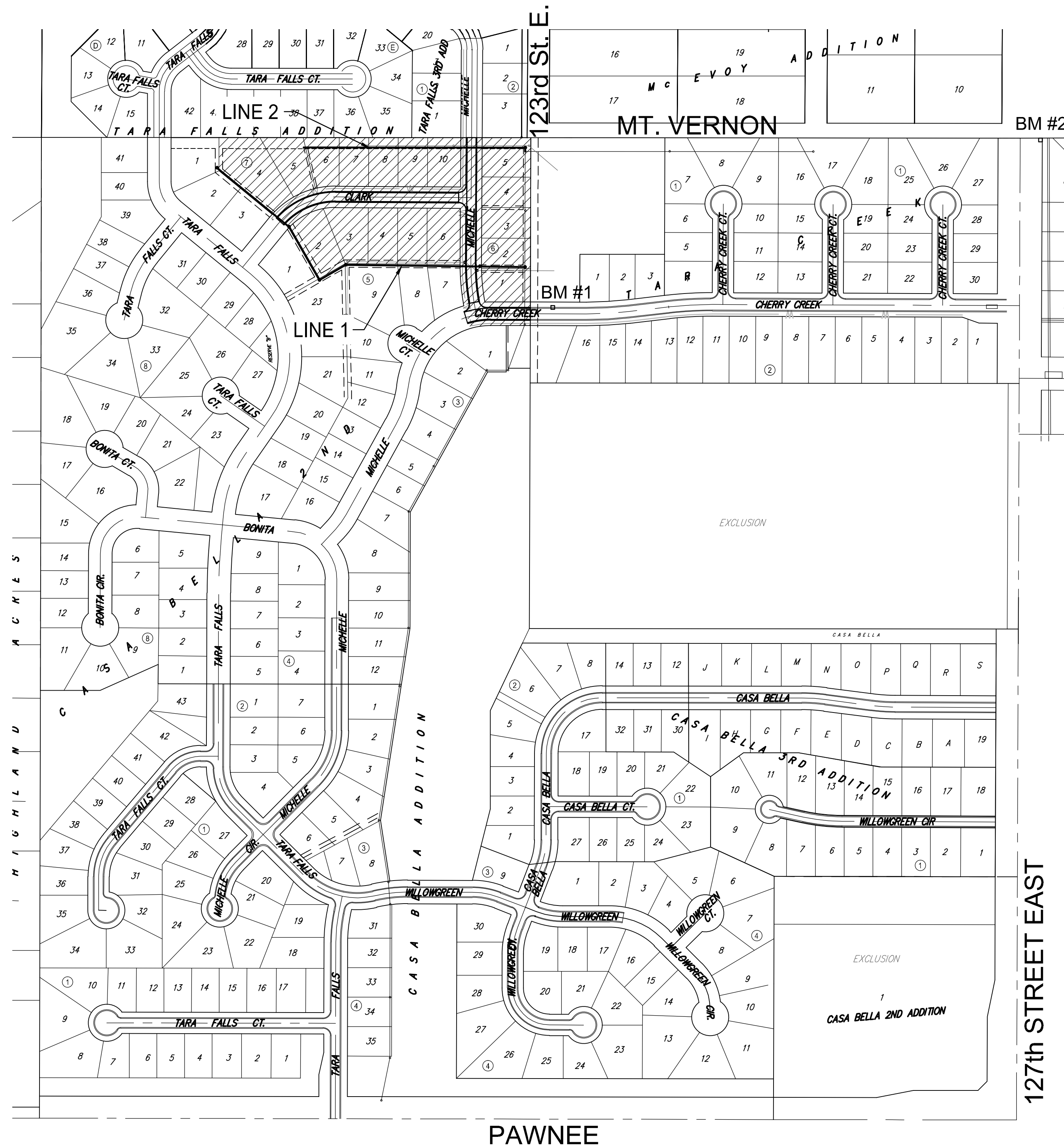
- The Contractor shall comply with all applicable safety regulations. All construction shall be completed following current City Standard Specifications and Special Provisions.
- Contractor will be required to provide notice to utility companies a minimum of seventy-two (72) hours prior to any excavation, as follows:
Kansas One-Call 687-2470
The Contractor must notify the following in case of an emergency:
Cox Communications 260-7204
Kansas Gas Service 1-888-482-4950
Black Hills Energy 941-1628
Westar 383-8600
AT&T 1-800-286-8313
City of Wichita Water Department 262-6000
City of Wichita Sewer Maintenance 262-6000
- Utility service lines, poles, etc. are to be adjusted as necessary by others prior to construction unless the plans specifically call for their adjustment by the Contractor or unless the plans specifically identify a utility to be adjusted by its owner during construction. Existing utilities and their location, as shown on the plans, represent the best information obtainable for design. The Contractor will be required to work around existing utilities within the right-of-way which do not conflict with proposed construction.
- Rubble from the removal of miscellaneous structures and excess excavation which is to be wasted shall be disposed of on sites to be provided by the Contractor. These sites shall be approved by the Engineer as to suitability, appearance and site location. Locations, in the opinion of the Engineer, that will leave an unsightly appearance will not be approved. All disposal sites must be approved by the Kansas Department of Health and Environment. Material either stockpiled or disposed of in a flood plain will require a Kansas State Board of Agriculture permit. Any material dumped in waters of the United States or wetlands is subject to U.S. Corps. of Engineers permitting regulations. Any material buried or stockpiled beyond approved construction limits will require additional archaeological investigations unless buried in a previously approved borrow location.
- Trees and shrubs in public right-of-way which are in direct conflict with proposed new construction shall be removed by the Contractor with the Engineer's approval. Trees and shrubs which are not in direct conflict with proposed new construction shall be saved and protected from damage.
- The Contractor shall give all property owners and/or tenants of developed property abutting the construction of this project a minimum of ten (10) days notice prior to start of construction.
- The Contractor shall be responsible for preserving property irons. The Contractor will be required to re-establish any property irons which are damaged or destroyed by his construction operations. Such irons shall be re-established by a licensed land surveyor in accordance with state laws.
- If traffic will be impacted by construction, a traffic control plan must be submitted and approved by the City Traffic Engineer, Brian Coan at traffic@wichita.gov before construction can begin. The Contractor shall be responsible for all traffic control measures to facilitate construction. All construction zone markings and signage shall conform to the latest version of the Manual on Uniform Traffic Control Devices (MUTCD) as published by the US Dept. of Transportation, Federal Highway Administration. All costs associated with construction markings and signage shall be the Contractors responsibility.
- All elevations shown are NAVD 88.
- All areas disturbed during construction that will not be under proposed pavement shall be restored to match existing conditions.
- The Contractor shall protect from damage and support existing utilities through constructions as approved by the utility owner and the Engineer at the contractors expense.
- Contractor shall limit the extent of trench openings overnight and weekends to less than 50 feet.
- Any sidewalk, drive approach, curb, or street pavement removed to construct project must have a pavement cut permit and be replaced by the City contractor. Permits can be obtained by calling 316-268-4501 or 316-268-4480.
- All stubs and plugged pipes shall be located with green plastic tape in the same manner as risers.

- Connecting to Existing Manholes: Prior to laying sewer lines using existing stubs in existing manholes, the Contractor shall expose and verify the elevation, grade and alignment of existing stubs and notify the Engineer of any deviation from the plans. Where connection to an existing manhole that does not have an existing stub or the stub is unusable due to elevation grade or alignment, the Contractor shall bore cut into existing manhole wall to make connection using approved water stop gasket, and reshape the existing manhole invert to provide smooth flow. The cost to connecting to existing manholes is incidental to the project.
- Contractor shall provide positive drainage away from all manhole covers.
- The Contractor shall prevent any construction debris from entering the existing sanitary sewer during construction.
- The Contractor shall be responsible for maintaining continuous flow of sewage through construction. Contractors proposed method for maintaining sewage flow shall be submitted and approved by the Sewer Maintenance Division (316-268-4073) prior to starting and by-passing of sewage flows.
- Any over excavation from manhole and pipe removal shall be backfilled with AB-3 compacted to 90-95% ASTM D698.

Benchmarks

BENCHMARK #1
CHISELED SQUARE ON THE TOP OF CURB ON N. SIDE OF CHERRY CREEK 40'± E. OF END OF PAVEMENT, EAST SIDE OF INLET.
ELEVATION = 1339.26 (NAVD88)

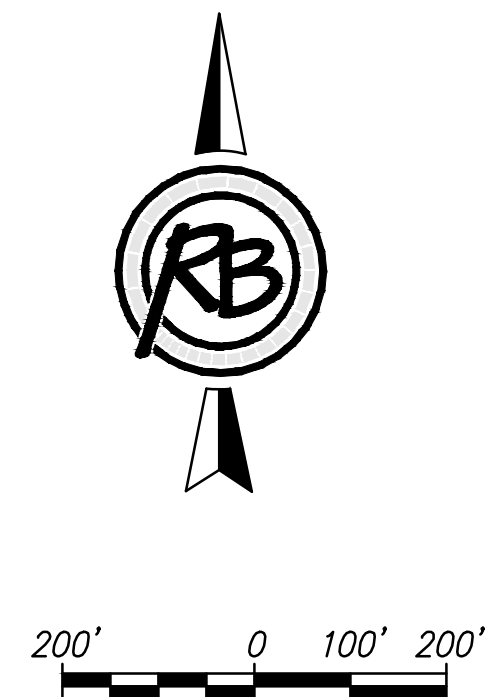
BENCHMARK #2
RB BRASS DISC, EAST SIDE OF 127TH & MT. VERNON 55.45' E. & 5.13' S. OF THE NW COR. OF THE SW 1/4 OF SEC. 35, T27S, R2E.
ELEVATION = 1348.80 (NAVD88)



IMPROVEMENT DISTRICT

Sheet Index

Sheet Title
1 SS Titlesheet
2 Plan & Profile - Line 1
3 SS-2 (Existing) Risers
4 Pre-Cast SS MH
5 MH Frame & Cover
6 Vertical Riser
7 Erosion Control Plan
8 BOC
9 Silt Fc
10 Straw Bale
11 SIP
12 SDP
13 SS-Bubble Map
14 Addition Bubble Map
15 Casa Bella Plat

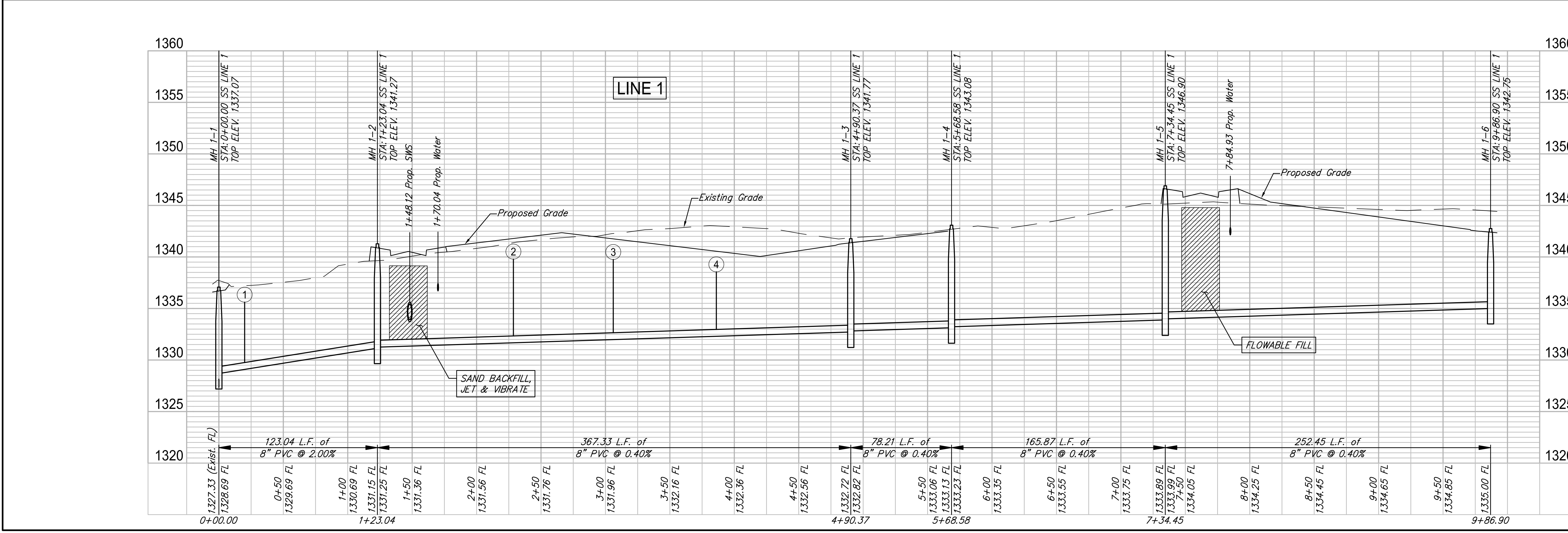
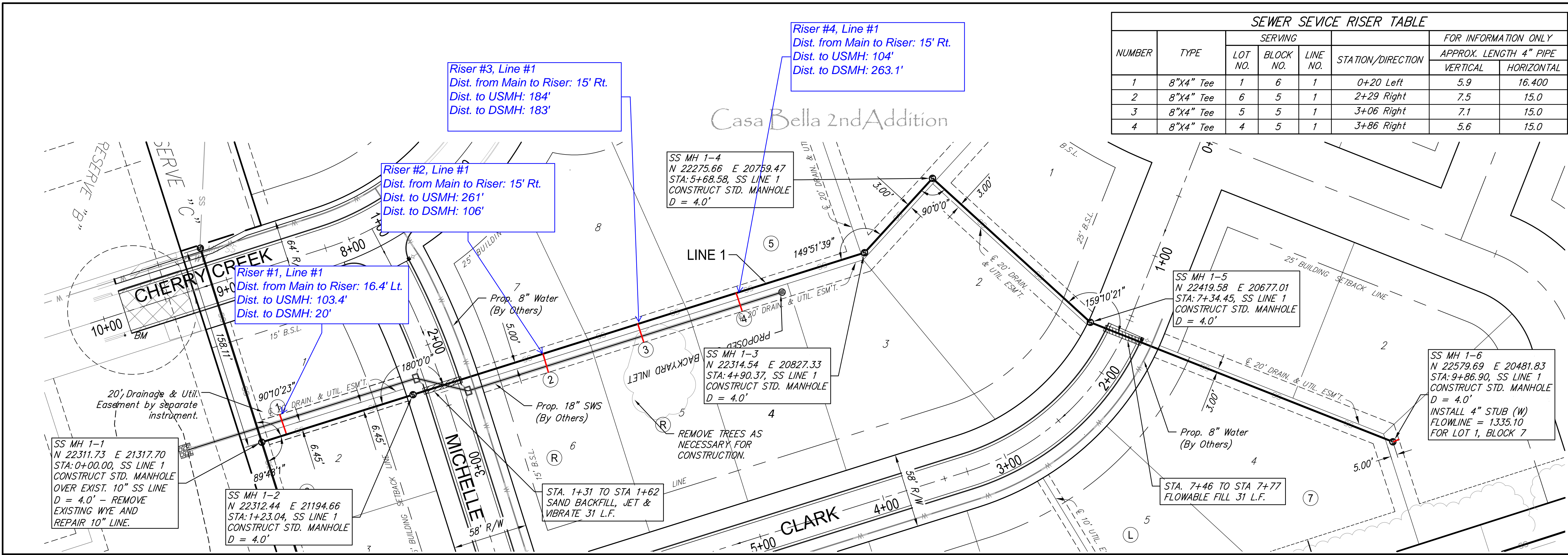
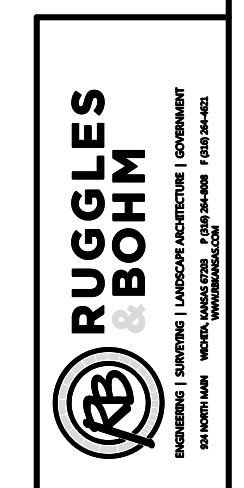
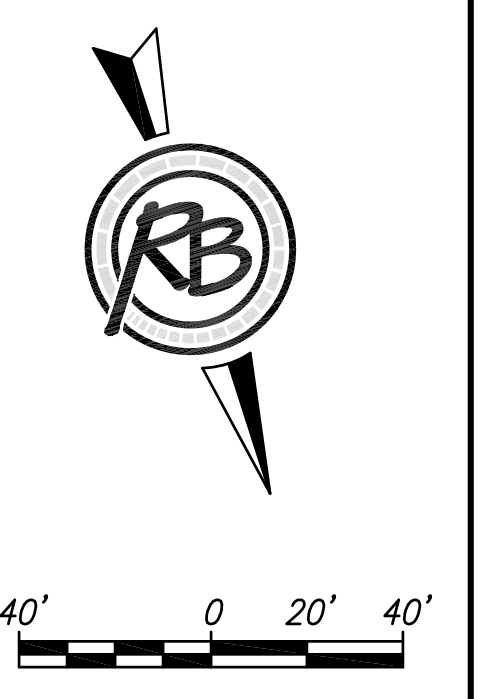


January 2017



ENGINEERING | SURVEYING | LANDSCAPE ARCHITECTURE | GOVERNMENT
924 NORTH MAIN WICHITA, KANSAS 67203 P (316) 264-8008 F (316) 264-4621
WWW.RBKANSAS.COM 4796E

SEWER SERVICE RISER TABLE							
NUMBER	TYPE	SERVING			STATION/DIRECTION	FOR INFORMATION ONLY	
		LOT NO.	BLOCK NO.	LINE NO.		APPROX. LENGTH 4" PIPE	
1	8"X4" Tee	1	6	1	0+20 Left	VERTICAL	HORIZONTAL
2	8"X4" Tee	6	5	1	2+29 Right	7.5	15.0
3	8"X4" Tee	5	5	1	3+06 Right	7.1	15.0
4	8"X4" Tee	4	5	1	3+86 Right	5.6	15.0



REVISION DATE 3/13/2017

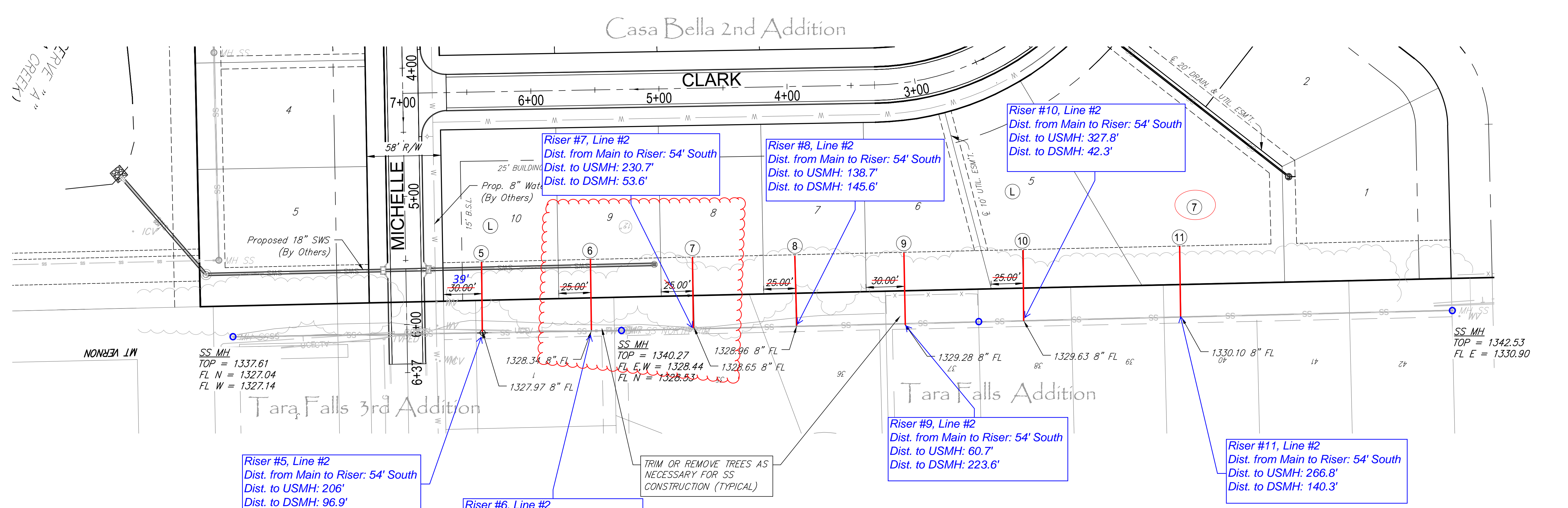
DESIGNER KWL DRAWN DRS

PROJECT NUMBER 468-85163 DRAWING FILE SS-1 [Plan & Profile - Line 1]

Casa Bella 2nd - Phase 4
Plan & Profile - Line 1
Wichita, Kansas

DATE 3/13/2017

SHEET 2 OF 15



Riser #5, Line #2
 Dist. from Main to Riser: 54' South
 Dist. to USMH: 206'
 Dist. to DSMH: 96.9'

Riser #6, Line #2
 Dist. from Main to Riser: 54' South
 Dist. to USMH: 271.7'
 Dist. to DSMH: 12.6'

Riser #7, Line #2
 Dist. from Main to Riser: 54' South
 Dist. to USMH: 230.7'
 Dist. to DSMH: 53.6'

Riser #8, Line #2
 Dist. from Main to Riser: 54' South
 Dist. to USMH: 138.7'
 Dist. to DSMH: 145.6'

Riser #10, Line #2
 Dist. from Main to Riser: 54' South
 Dist. to USMH: 327.8'
 Dist. to DSMH: 42.3'

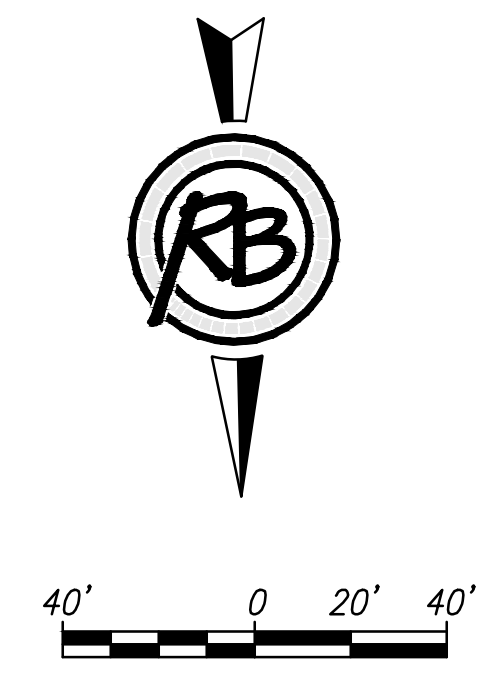
Riser #9, Line #2
 Dist. from Main to Riser: 54' South
 Dist. to USMH: 60.7'
 Dist. to DSMH: 223.6'

Riser #11, Line #2
 Dist. from Main to Riser: 54' South
 Dist. to USMH: 266.8'
 Dist. to DSMH: 140.3'

TRIM OR REMOVE TREES AS NECESSARY FOR SS CONSTRUCTION (TYPICAL)

SEWER SERVICE RISER TABLE							
NUMBER	TYPE	SERVING			FOR INFORMATION ONLY		
		LOT NO.	BLOCK NO.	LINE NO.	STATION/DIRECTION	APPROX. LENGTH 4" PIPE	
						VERTICAL	HORIZONTAL
5	8"X4" Tee	10	7	2	-1+95-Left	13.9	54.5
6	8"X4" Tee	9	7	2	-2+80-Left	12.9	54.5
7	8"X4" Tee	8	7	2	-3+60-Left	12.3	54.5
8	8"X4" Tee	7	7	2	-4+40-Left	13.2	54.5
9	8"X4" Tee	6	7	2	-5+25-Left	14.2	54.5
10	8"X4" Tee	5	7	2	-6+17-Left	14.3	54.5
11	8"X4" Tee	4	7	2	-7+40-Left	11.9	54.5

- NOTES:**
- Line 2 is An Existing Line. This Plan Sheet is Included to Indicate Sewer Service Riser Assemblies for Lots Served By This Line.
 - Field Adjust Service Locations as Necessary to Minimize Tree Removal.
 - Fence Removal and Resetting Shall Be Incidental To Site Clearing & Restoration.
 - Sprinkler System Parts Damaged During Construction Shall Be Salvaged to The Respective Property Owner.
 - Yards Must Be Restored with Sod Matching Existing Grass.

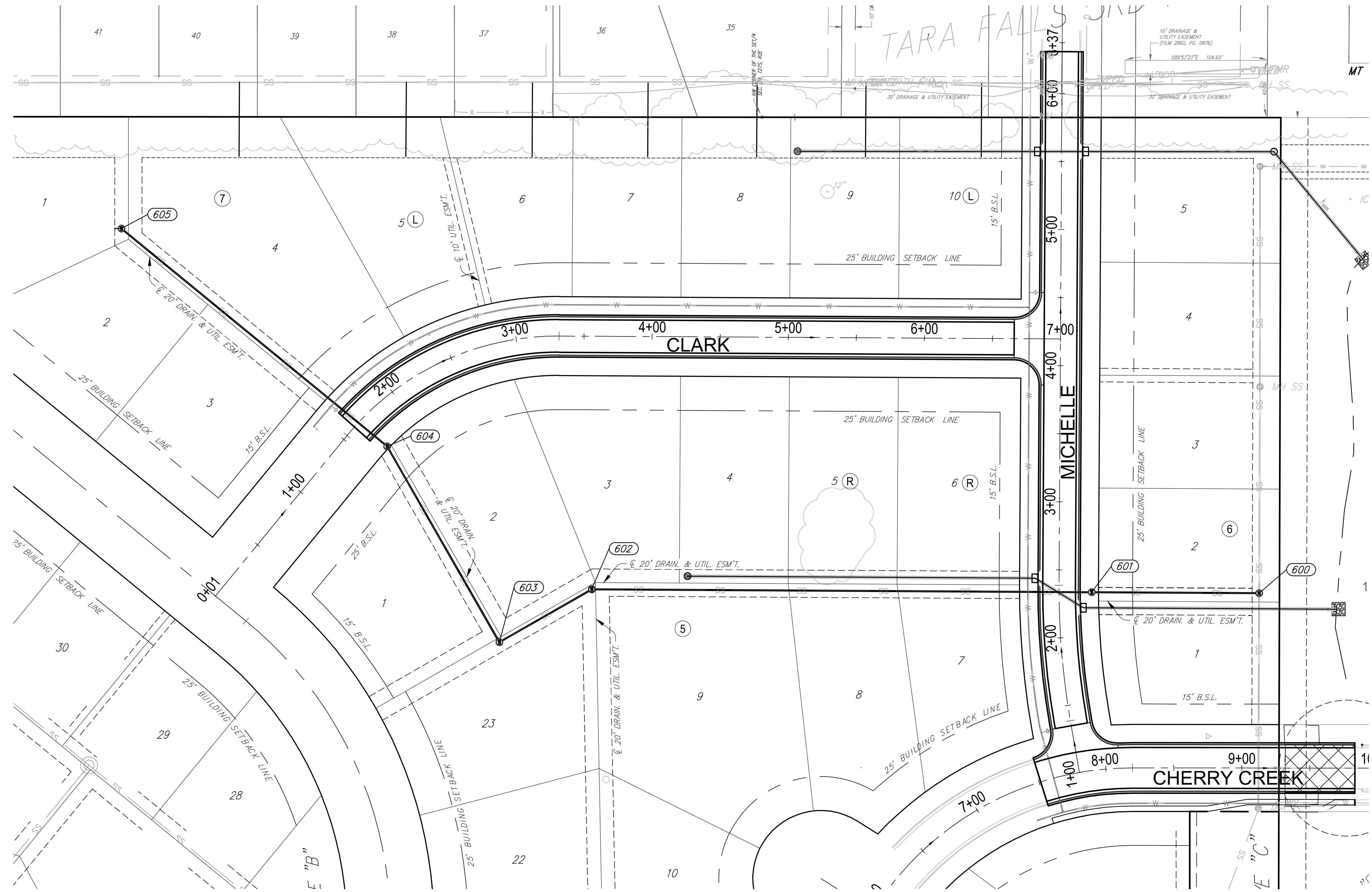


**Casa Bella 2nd - Phase 4
 SS-2 (Existing) Risers**

	<p>RUGGLES & BOHM</p> <p>ENGINEERING SURVEYING LANDSCAPE ARCHITECTURE GOVERNMENT</p> <p>924 NORTH MAIN WICHITA, KANSAS 67203 P (316) 264-8008 F (316) 264-4621 WWW.RUGGLESANDBOHM.COM</p>	DATE	3/13/2017
		DESIGN	KWL
PROJECT NUMBER	468-85163	DRAWN	DRS
DRAWING FILE	SS-2 [SS-2 (Existing) Risers]	DIWG. SCALE	...
		SHEET	3
		OF	15

Tara Falls Addition

Tara Falls 3rd Addition



Point Table			
Point #	Northing	Easting	Description
600	22311.73	21317.70	MH 1-1
601	22312.44	21194.66	MH 1-2
602	22314.54	20827.33	MH 1-3
603	22275.66	20759.47	MH 1-4
604	22419.58	20677.01	MH 1-5
605	22579.69	20481.83	MH 1-6

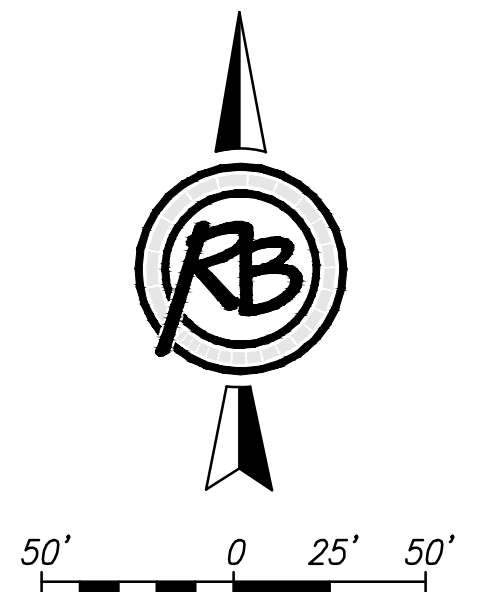
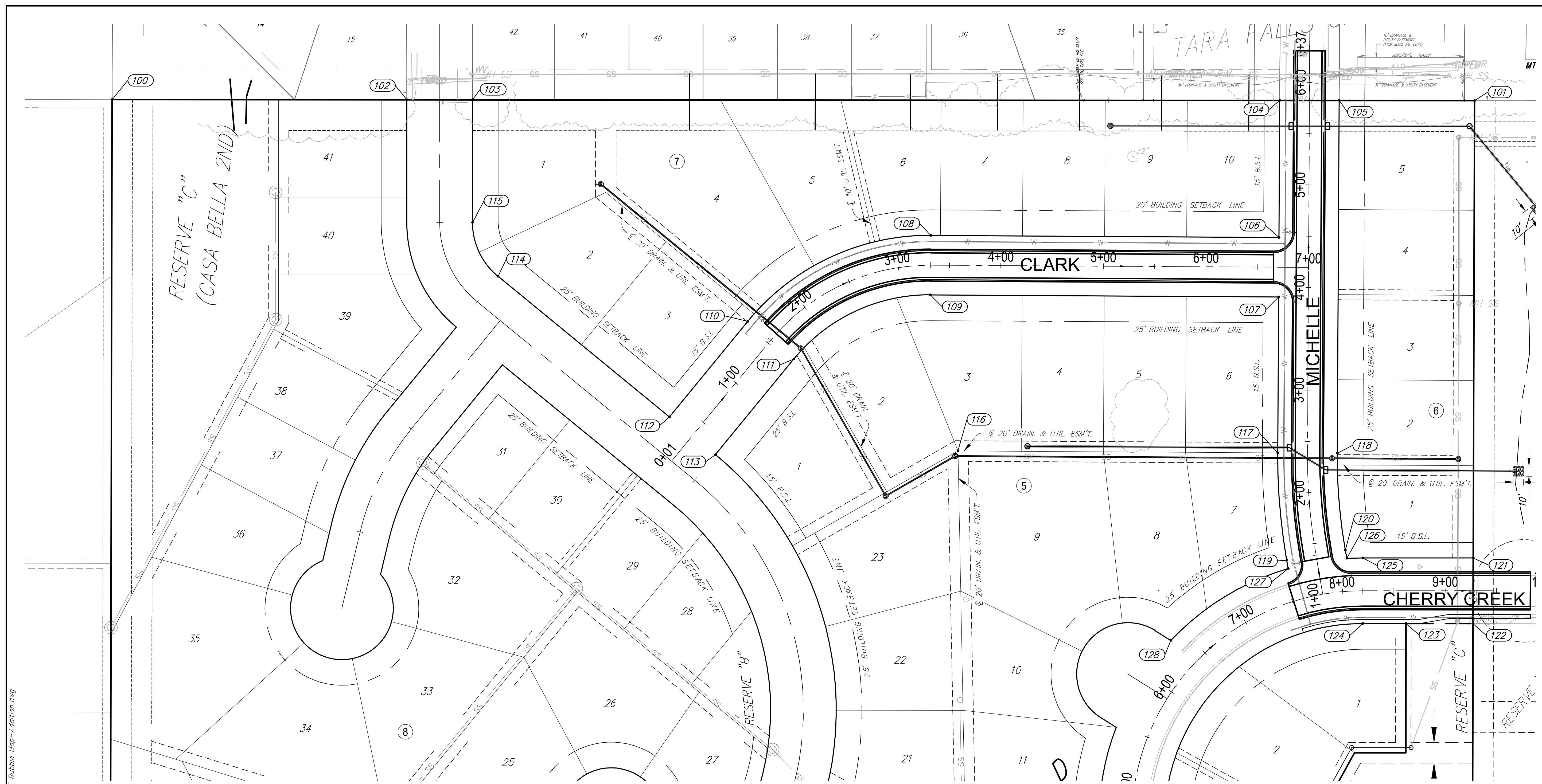
Tara Creek Addition

Casa Bella 2nd Addition

F:\Projects\Projects 4700-4799\4796E (Casa Bella Phase 4 Engineering)\4796E Coordinates-Bubble Maps.dwg

(c) Copyright 2015, Ruggles & Bohm, P.A.

Casa Bella 2nd - Phase 4 SS-Bubble Map		DATE 3/13/2017
	RUGGLES & BOHM <small>ENGINEERING SURVEYING LANDSCAPE ARCHITECTURE GOVERNMENT</small> <small>924 NORTH MAIN WICHITA, KANSAS 67203 P (316) 264-8008 F (316) 264-4621 WWW.RUGGLESANDBOHM.COM</small>	DESIGN KWL
		DRAWN DRS
PROJECT NUMBER 468-85163	HW JOB NO. 4796E	DWG. SCALE ...
DRAWING FILE 4796E Coordinates-Bubble Maps [SS-Bubble Map]		SHEET 13 OF 15



Point Table			
Point #	Northing	Easting	Description
100	22662.17	20005.36	Addition Corner
101	22661.19	21333.58	Addition Corner
102	22661.96	20292.83	Block Corner
103	22661.91	20356.83	Block Corner
104	22661.33	21143.63	Block Corner
105	22661.28	21201.63	Block Corner
106	22527.74	21142.87	Block Corner
107	22469.74	21142.53	Block Corner
108	22529.68	20803.48	PC
109	22471.69	20803.14	PC

Point Table			
Point #	Northing	Easting	Description
110	22445.92	20625.11	PT
111	22409.14	20669.95	PT
112	22352.80	20548.72	Block Corner
113	22316.01	20593.56	Block Corner
114	22489.80	20381.70	PC
115	22542.38	20356.83	PT
116	22319.53	20830.00	Prop. Cor
117	22317.74	21141.66	PC
118	22317.41	21199.66	PC
119	22212.98	21150.43	PT

Point Table			
Point #	Northing	Easting	Description
120	22222.95	21207.57	PT
121	22215.20	21332.30	Block Corner
122	22151.20	21332.11	Block Corner
123	22151.27	21266.72	Block Corner
124	22151.32	21224.49	PC
125	22215.32	21224.56	PC
126	22214.86	21208.98	Block Corner
127	22204.89	21151.84	Block Corner
128	22134.80	21037.47	Block Corner

F:\Projects\Projects 4700-4799\4796E (Casa Bella Phase 4 Engineering)\4796E Bubble Map-Addition.dwg

(c) Copyright 2015, Ruggles & Bohm, P.A.

**Casa Bella 2nd - Phase 4
Addition Bubble Map**

RUGGLES & BOHM

ENGINEERING | SURVEYING | LANDSCAPE ARCHITECTURE | GOVERNMENT

924 NORTH MAIN WICHITA, KANSAS 67203 P (316) 264-8008 F (316) 264-4621
WWW.RUGGLESANDBOHM.COM

DATE
3/13/2017

DESIGN
KWL

DRAWN
DRS

REVIEW
...

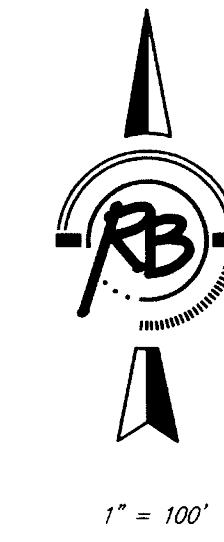
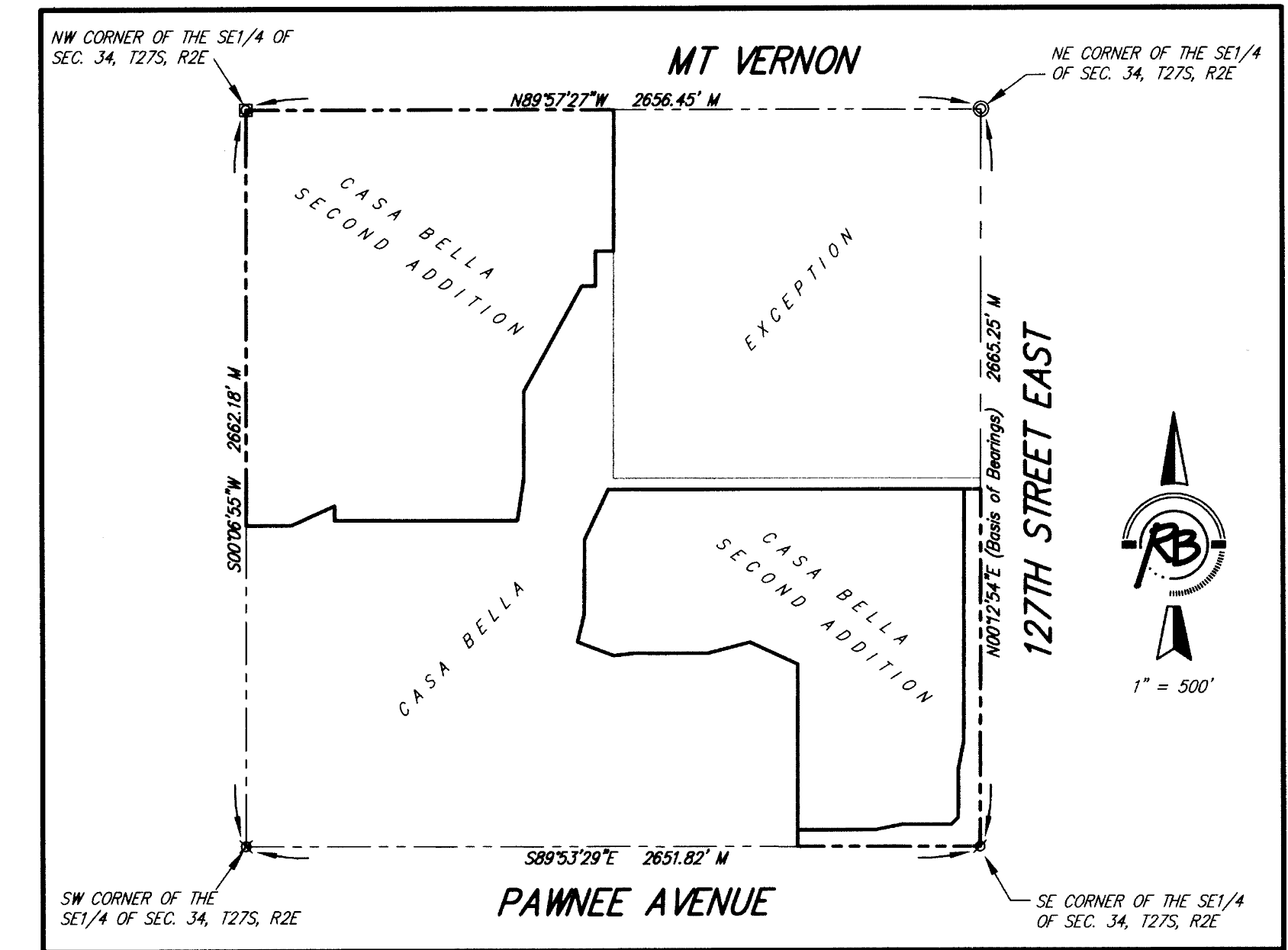
SHEET
14

OF
15

PROJECT NUMBER 468-85163	REV. JOB NO. 4796E	DWG. SCALE ...
DRAWING FILE 4796E Bubble Map-Addition [Addition Bubble Map]		

CASA BELLA SECOND ADDITION

Wichita, Sedgwick County, Kansas



BENCH MARK: SRB BRASS DISC 55.45' E.
& 5.13' S. OF THE N.W. COR., SW 1/4, SEC. 35,
127S, R2E
ELEVATION = 1348.35 (NGVD29)

P = Plotted (Casa Bella)
M = Measured

SURVEY MARKER LEGEND

- PK NAIL IN CONCRETE (FOUND - ORIGIN UNKNOWN)
- 1/2" IRON PIPE (FOUND - ORIGIN UNKNOWN)
- ⊙ 3/4" IRON PIPE (FOUND - ORIGIN UNKNOWN)
- ⊗ 5/8" REBAR W/GARBER CAP (FOUND)
- ⊗ 1" BAR (FOUND - ORIGIN UNKNOWN)
- ⊗ 5/8" REBAR W/SRB CAP (FOUND)
- ⊗ 5/8" REBAR W/R&B CAP (FOUND)
- 5/8" REBAR W/R&B CAP (SET)

BLOCK	LOT NO.	ELEVATION (NGVD29)
2	1, 2, 3, 4, 5, 6, 7	1345.4
3	10, 11, 12	1345.4
3	1, 2, 3, 4, 5, 6, 7, 8, 9	1339.4
6	1, 2, 3, 4, 5	1336.8

