

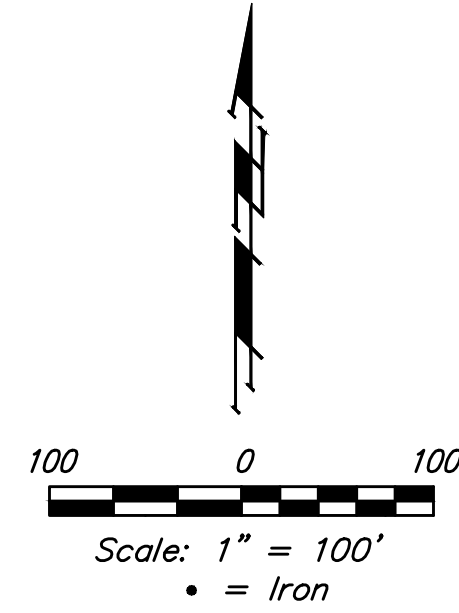
BENCHMARKS

BM #1: Chiseled Square, Center of Storm Water Sewer Vault, West Side of Meridian Ave., 145' South and 30.6' East of the Northeast Cor., Lot 1, Block A, Northgate 2nd Addition
Elev. = 1334.49 NAVD88

BM #2: "X" on South End of Catch Basin, East Side of Meridian Ave. 42.3' South of 55th St. N. & 30' East of Meridian Ave. centerline
Elev. = 1332.58 NAVD88

SHEET INDEX

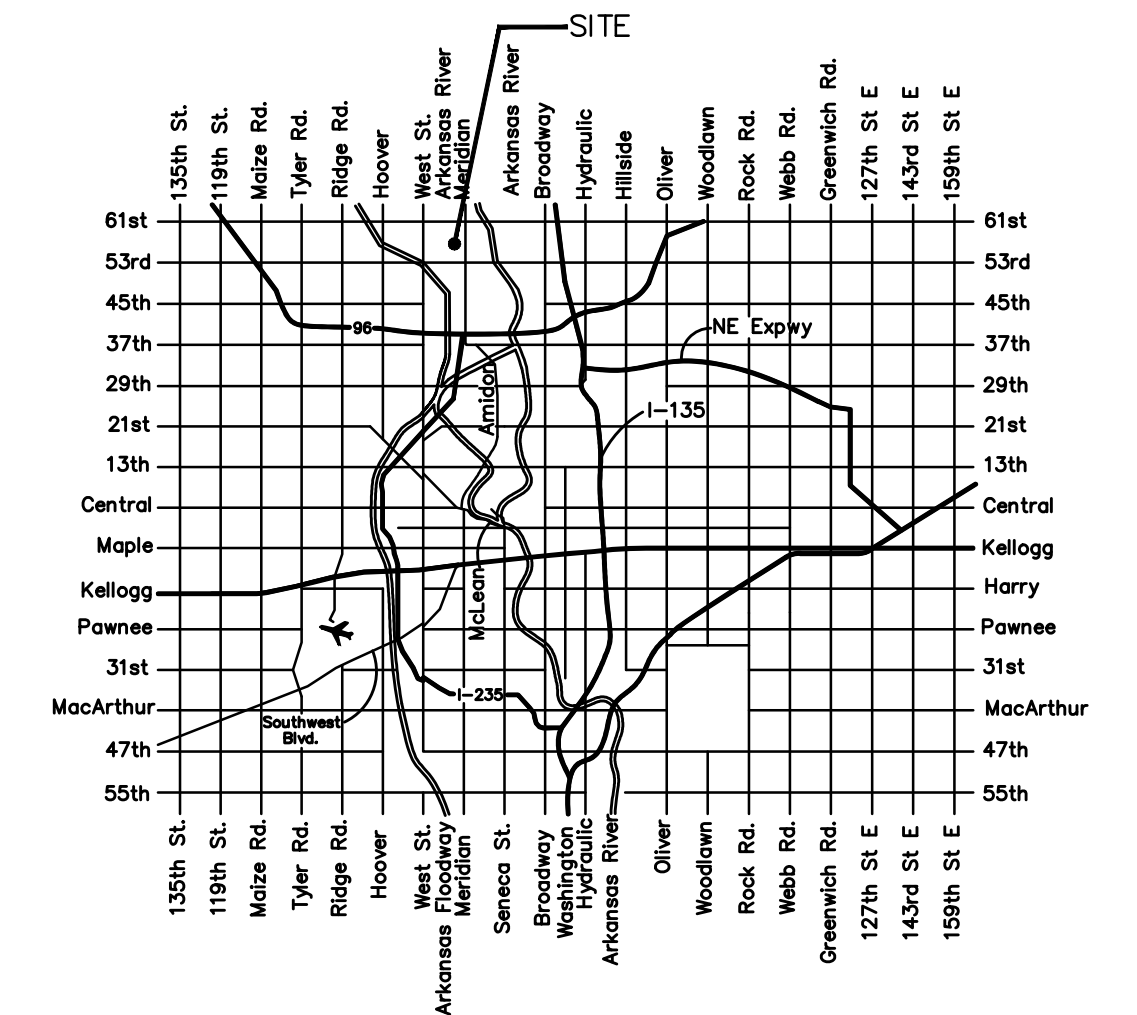
Title Sheet	1
SWS Line 1	2-3
SWS Line 2	4
SWS Line 2 & Line 2A	5
Std. Type 1A Inlet Detail	6
Standard Manhole Detail	7
Ring & Cover Detail	8
Special Yard Inlet Detail	9
Mass Grading Plan/ Erosion Control Plan	10
Mass Grading Typical Section	11
Pond Plan	12
Erosion Control BMPs	13-17
Coordinate Sheet	18
Copy of Plat	19-20



STORM WATER DRAIN #709 to serve **NORTHGATE 2ND ADDITION** CITY OF WICHITA, KANSAS

Gary Janzen, P.E. City Engineer
Project Number
468-85142
O.C.A. Number
751553

Mies Construction - Contractor
J. Brand - City of Wichita, Field Project Engineer
T. Dvorak - City of Wichita, Inspector
As-built
Completion Date: 1/2/2018



Vicinity Map

GENERAL NOTES:

- Contractor will be required to provide notice to utility companies a minimum of forty-eight (48) hours prior to any excavation, as follows:

Kansas One-Call 687-2470

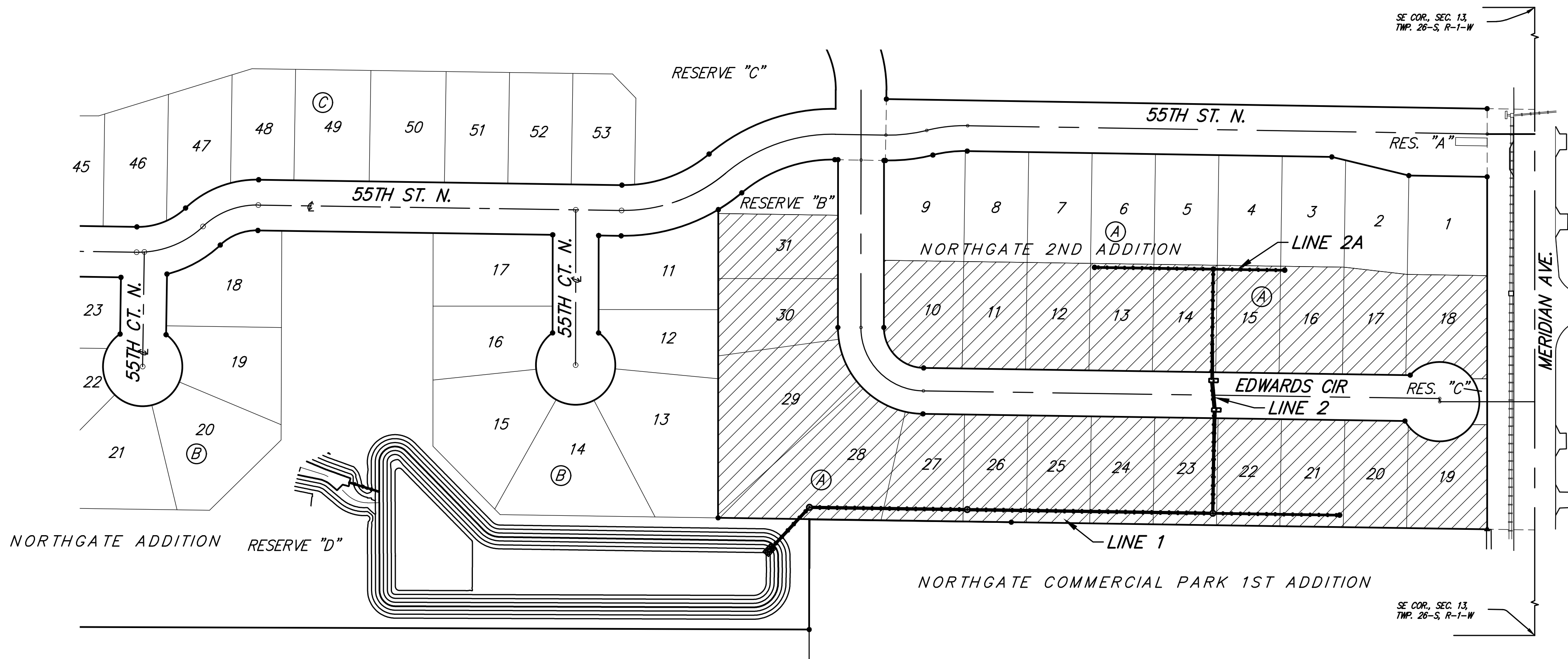
The Contractor must notify the following in case of an emergency:

Cox Communications 262-4270
Kansas Gas Service 1-888-482-4950
Westar Energy 383-8650
Aquila Energy 1-800-303-0357
ATT 268-2245
City of Wichita Water Dept. 268-4563
City of Wichita Sewer Maint. 268-4024
City of Wichita Storm Water Maint. 268-4090
City of Wichita Traffic Maint. 268-4034
Conaco Phillips Pipeline Co. 1-877-267-2290
Southern Star Pipeline Co. 529-6600
Kinder-Morgan Pipeline Co. 1-888-844-5658
- Utility service lines, poles, valve boxes, meters, and etcetera are to be adjusted as necessary by others prior to construction unless the plans specifically call for their adjustment by the Contractor or unless the plans specifically identify a utility to be adjusted by its owner during construction. Existing utilities and their location, as shown on the plans, represent the best information obtainable for design. The Contractor will be required to work around existing utilities within the right-of-way which do not conflict with proposed construction.
- Rubble from the removal of miscellaneous structures and excess excavation which is to be wasted shall be disposed of on sites to be provided by the Contractor. These sites shall be approved by the Engineer as to suitability, appearance and site location. Locations, in the opinion of the Engineer, that will leave an unsightly appearance will not be approved. All disposal sites must be approved by the Kansas Department of Health and Environment. Material either stockpiled or disposed of in a flood plain would require a Kansas State Board of Agriculture permit. Any material dumped in waters of the United States or wetlands is subject to U.S. Corps of Engineers permitting regulations. Any material buried or stockpiled beyond approved construction limits would require additional archaeological investigations unless buried in a previously approved borrow location.
- Trees and shrubs in public right-of-way which are in direct conflict with proposed new construction shall be removed by the Contractor ONLY with the Developer or Baughman Company approval. Trees and shrubs which are not in direct conflict with proposed new construction shall be saved and protected from damage.
- The Contractor shall give all property owners and/or tenants of developed property abutting the construction of this project a minimum of ten (10) days notice prior to start of construction.
- The Contractor shall be responsible for preserving property irons. The Contractor will be required to re-establish any property irons which are damaged or destroyed by his construction operations. Such irons shall be re-established by a licensed Land Surveyor in accordance with state laws.
- All existing and proposed erosion control measures including silt fencing, erosion control mat, straw bales, inlet barriers, and const. entrance shall be maintained throughout construction by the Contractor and until project is accepted by the City of Wichita. The on-site Engineer shall complete weekly reports on the status of erosion control measures. The Contractor shall be required to comply with maintenance and/or replacement of erosion control measures as determined by the on-site Engineer until project is accepted by City of Wichita. Maintenance and/or replacement of erosion control measures to be paid by L.S. bid item "Maintain Existing BMP's."
- Permanent Seed Reserve "D" disturbed areas excluding pond bottom Temporary Seeding for streets, easements, and building pads. Permanent Seeding and Temporary Seeding shall be seeded and mulched as follows:

Permanent Seeding:
SEED - Kansas Premium Fescue Blend: 350#/Acre & Annual Rye 75#/Acre.
FERTILIZER - 12-24-12 Ration at 350 Lbs./Ac.
MULCH - 2 Tons of Prairie Hay/Acre

Temporary Seeding:
SEED - Rye Grass (PLS)- 220 Lbs./Acre

All costs associated with seeding shall be included in bid item "Seeding." All seeding operations shall conform to City of Wichita Standard Specifications.
- At conclusion of construction, an as-built survey will be completed by the Engineer including streets, easements, and building pad corners. The Contractor will be required to finish and smooth grade all locations as necessary that are not within ±0.2' of street R/W and building pad or within ±0.3' of plan grade for easements. The Contractor shall include all costs associated with the regrading and/or remobilization in the bid item "Grading, Mass"
- The Developer for this project is Jay Russell PH# (316) 722-2417.



Benefit District:

Storm Water Certification:
These construction plans were prepared in accordance with the current Storm Water Management Regulations as set forth in the City of Wichita's Storm Water Management Ordinance 16.32 and the policies/guidelines presented in the Wichita/Sedgwick County Storm Water Manual.

Disturbed Area = 11.1 ac.
Water Quality Treatment: This site utilizes a Temporary Drainage Basin that drains into an existing temporary drainage ditch.

EARTH WORK TOTALS (Unadjusted)

	C.Y. EXCAVATION	C.Y. FILL
Total Mass Grading	21,048	17,653

Earthwork Quantities reflect the best available topography. The Contractor shall satisfy himself with the earthwork quantities as bid for L.S. "Grading, Mass" prior to bidding. No additional payments or change orders for earthwork will be accepted.

Baughman Company, P.A. 315 Ellis St. Wichita, KS 67211 P 316-262-7271 F 316-262-0149
ENGINEERING | SURVEYING | PLANNING | LANDSCAPE ARCHITECTURE