

STORM WATER DRAIN #419

to serve

FIREFLY WAY ADDITION PHASE I

CITY OF WICHITA, KANSAS

Gary Janzen, P.E. City Engineer

Project Number

468-85185

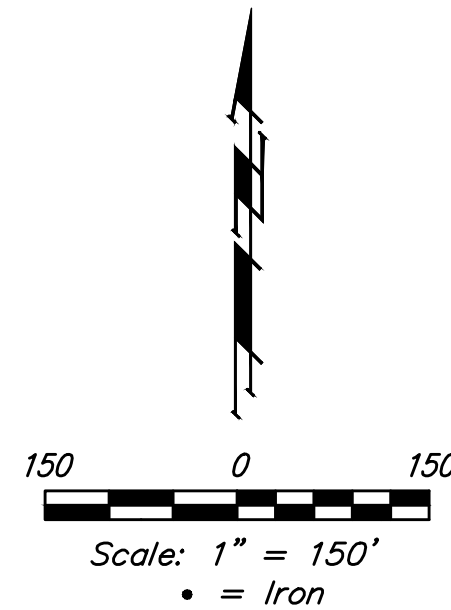
OCA Number

751554

Mies Construction - Contractor
 J. Brand - City of Wichita, Field Project Engineer
 S. May - City of Wichita, Inspector
 As-built
 Completion Date: 1/2/2018

GENERAL NOTES:

- Contractor will be required to provide notice to utility companies a minimum of forty-eight (48) hours prior to any excavation, as follows:
 Kansas One-Call 687-2470
 The Contractor must notify the following in case of an emergency:
 Cox Communications 262-4270
 Kansas Gas Service 1-888-482-4950
 Westar Energy 383-8650
 Aquila Energy 1-800-303-0357
 ATT 268-2245
 City of Wichita Water Dept. 268-4563
 City of Wichita Sewer Maint. 268-4024
 City of Wichita Storm Sewer Maint. 268-4090
 City of Wichita Traffic Maint. 268-4034
 Conoco Phillips Pipeline Co. 1-877-267-2900
 Southern Star Pipeline Co. 529-6600
 Kinder-Morgan Pipeline Co. 1-888-844-5658
- Utility service lines, poles, valve boxes, meters, and etcetera are to be adjusted as necessary by others prior to construction unless the plans specifically call for their adjustment by the Contractor or unless the plans specifically identify a utility to be adjusted by its owner during construction. Existing utilities and their location, as shown on the plans, represent the best information obtainable for design. The Contractor will be required to work around existing utilities within the right-of-way which do not conflict with proposed construction.
- Rubble from the removal of miscellaneous structures and excess excavation which is to be wasted shall be disposed of on sites to be provided by the Contractor. These sites shall be approved by the Engineer as to suitability, appearance and site location. Locations, in the opinion of the Engineer, that will leave an unsightly appearance will not be approved. All disposal sites must be approved by the Kansas Department of Health and Environment. Material either stockpiled or disposed of in a flood plain would require a Kansas State Board of Agriculture permit. Any material dumped in waters of the United States or wetlands is subject to U.S. Corps. of Engineers permitting regulations. Any material buried or stockpiled beyond approved construction limits would require additional archaeological investigations unless buried in a previously approved borrow location.
- Trees and shrubs in public right-of-way which are in direct conflict with proposed new construction shall be removed by the Contractor ONLY with the Developer or Baughman Company approval. Trees and shrubs which are not in direct conflict with proposed new construction shall be saved and protected from damage.
- The Contractor shall give all property owners and/or tenants of developed property abutting the construction of this project a minimum of ten (10) days notice prior to start of construction.
- Ditch grading to the south of 29th St. N. is incidental to bid item "Grading, Mass."
- The Contractor shall be responsible for preserving property irons. The Contractor will be required to re-establish any property irons which are damaged or destroyed by his construction operations. Such irons shall be re-established by a licensed Land Surveyor in accordance with state laws.
- All existing and proposed erosion control measures including silt fencing, erosion control mat, straw bales, inlet barriers, and const. entrance shall be maintained throughout construction by the Contractor and until project is accepted by the City of Wichita. The on-site Engineer shall complete weekly reports on the status of erosion control measures. The Contractor shall be required to comply with maintenance and/or replacement of erosion control measures as determined by the on-site Engineer until project is accepted by City of Wichita.
- All areas of Reserve "G", Firefly Way Addition above the pond bottom shall be seeded and mulched as follows:
 SEED - Riviera Bermuda grass at 3 lbs/1000 sq. ft. mixed with Annual Rye at 3 lbs/1000 sq. ft.
 FERTILIZER - 12-24-12 Ration at 350 Lbs./Ac.
 MULCH - 2 Tons of Prairie Hay/ Acre
 No Mulch needed where erosion control mat specified.
 All areas of 29th St. R/W, Reserve "C" and "E", Firefly Way Addition shall be seeded and mulched as follows: (Permanent Seeding):
 SEED - Kansas Premium Fescue Blend: 350#/Acre & Annual Rye 75#/Acre.
 FERTILIZER - 12-24-12 Ration at 350 Lbs./Ac.
 MULCH - 2 Tons of Prairie Hay/ Acre
 No Mulch needed where erosion control mat specified.
 All other areas not in street R/W are to be seeded as follows: (Temporary Seeding)
 SEED - Rye Grass (PLS)- 220 Lbs./Acre
 All costs associated with seeding shall be included in bid item "Seeding." All seeding operations shall conform to City of Wichita Standard Specifications.
- At conclusion of construction, an as-built survey will be completed by the Engineer. The Contractor will be required to finish and smooth grade all locations as necessary that are not within ±0.2' of street R/W plan grade or within ±0.3' of plan grade outside of street R/W. The Contractor shall include all costs associated with the regrading and/or reestablishment in the bid item "Grading, Mass"
- Borrow material is available at the south end of the development. This material may be used starting with the dirt piles at the east end and working westward. All costs associated with excavating & hauling borrow to be included in "Grading, Mass" bid item.
- The Contractor shall protect traffic by use of proper and necessary flags, lights, signals, barricades or other warning devices as needed, all in accordance with the latest edition of the Manual On Uniform Traffic Control Devices, U.S. Department of Transportation, Federal Highway Administration. Cost to be included in "Site Clearing and Restoration."
- The Developer for this project is Kevin Mullen PH# (316) 684-7300.



BENCHMARKS

BM #1: Chiseled Square, center of storm water sewer vault, West side of Meridian, 145' South & 30.6' East of the Northeast Corner, Lot 1, Block A, Northgate 2nd Addition
 Elevation = 1334.49 NAVD 88

BM #2: "X" on South End of Catch Basin, East Side of Meridian Ave.
 Elev. = 1332.58 NAVD88

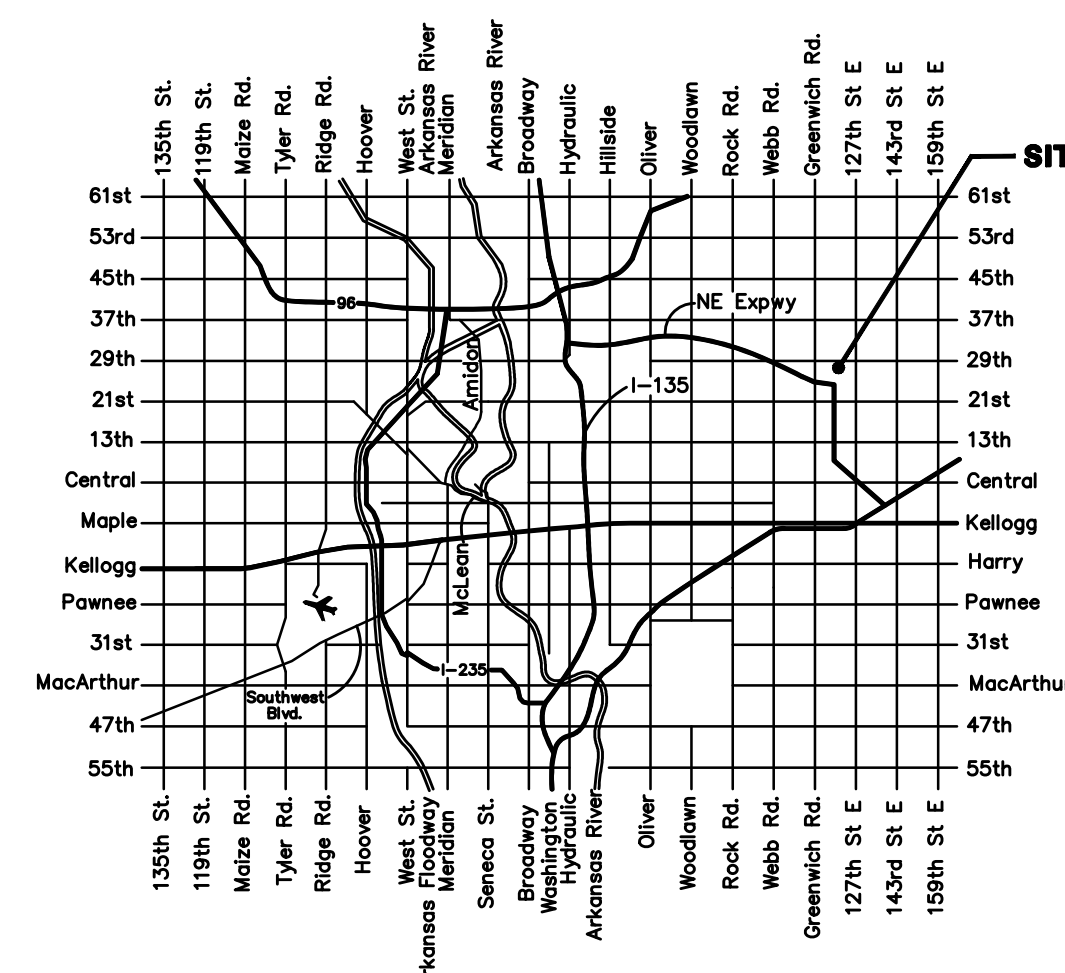
Construction Phasing:
 Contractor to mass grade the project in the following order:
 1. Lots 1-11, Block C, Lots 1-5, Block D, Lots 1-14, Block E & Lots 43-45, Block E.
 2. Bracken Street from 29th St. N. to SW Corner of Lot 45, Block E.

The lots listed above including adjacent street right of way are to be graded prior to the remainder of the site to allow for storm water sewer and street paving construction by others.

The storm water drain contractor will be required to coordinate with the storm sewer and street contractor to allow for construction to occur concurrently.

SHEET INDEX

Cover Sheet	1
Line 1	2
Std. Type 1A Inlet Detail	3
Ring & Cover Detail	4
Mass Grading/	
Erosion Control Plan	5-6
Mass Grading Typical Section	7
Pond Plan	8
Erosion Control BMPs	9-13
Geotechnical Report	14
Coordinate Sheet	15
Copy of Plat	16-17



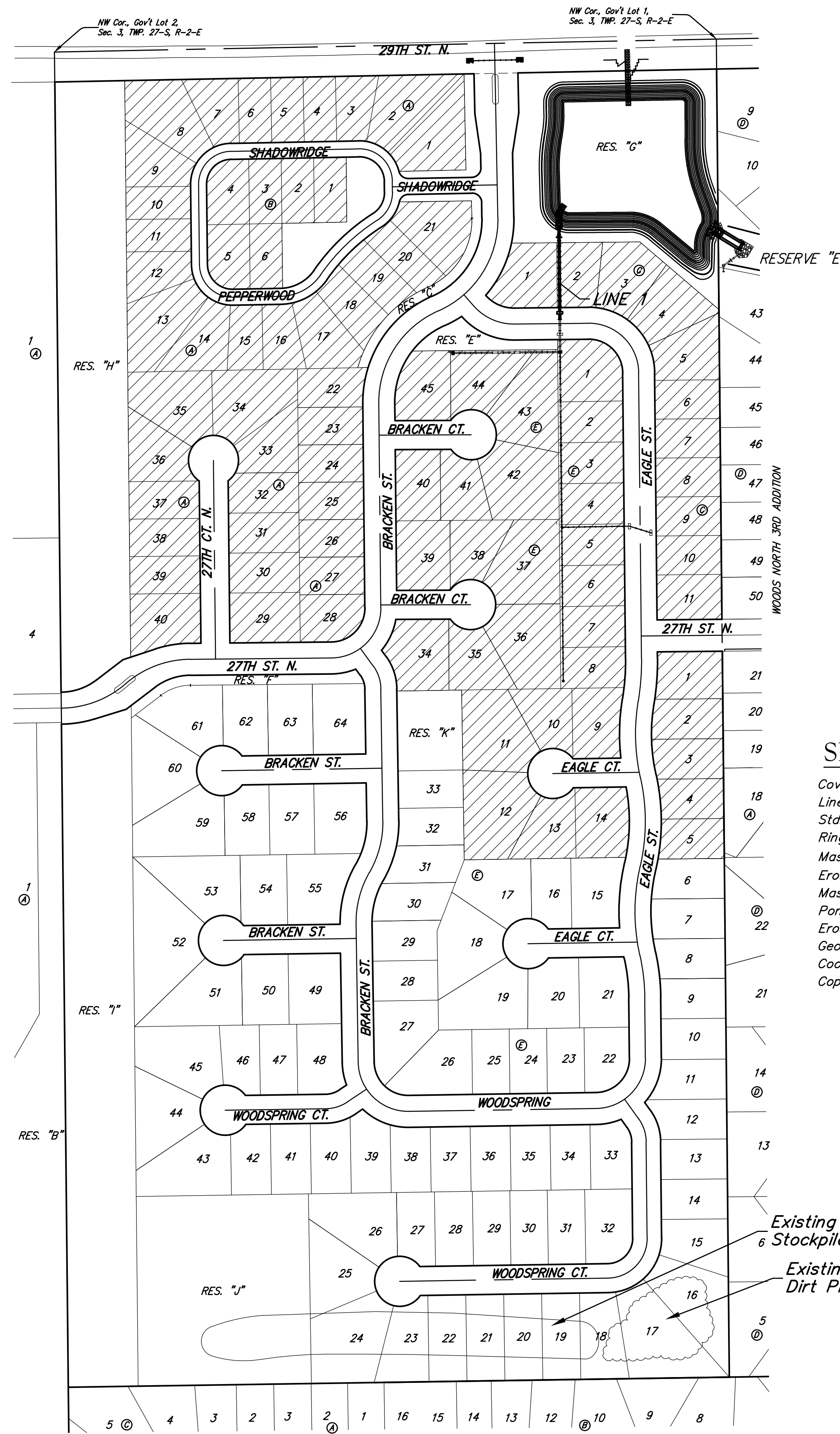
Vicinity Map

EARTH WORK TOTALS (Unadjusted)		
(for information only)		
	C.Y. Cut	C.Y. Fill
Mass Grading	31,419	70,627
Res. "G" Pond	40,935	1,286
Total Earthwork	72,354	71,913

Earthwork Quantities reflect the best available topography. The Contractor shall satisfy himself with the earthwork quantities as bid for L.S. bid item "Grading, Mass" prior to bidding. No additional payments or change orders for earthwork will be accepted.

Storm Water Certification:
 These construction plans were prepared in accordance with the current Storm Water Management Regulations as set forth in the City of Wichita's Storm Water Management Ordinance 16.32 and the policies/guidelines presented in the Wichita/Sedgwick County Storm Water Manual.

Disturbed Area = 40.6 ac.
 Water Quality Treatment: The site has a proposed drainage basin that will collect water from this site and a site to the north. The proposed basin will outfall into an existing pond, Res. "E", Woods North 3rd Addition.



BENEFIT DISTRICT

Baughman
 Baughman Company, P.A. 315 Ellis St. Wichita, KS 67211 P 316-262-7271 F 316-262-0149
 ENGINEERING | SURVEYING | PLANNING | LANDSCAPE ARCHITECTURE