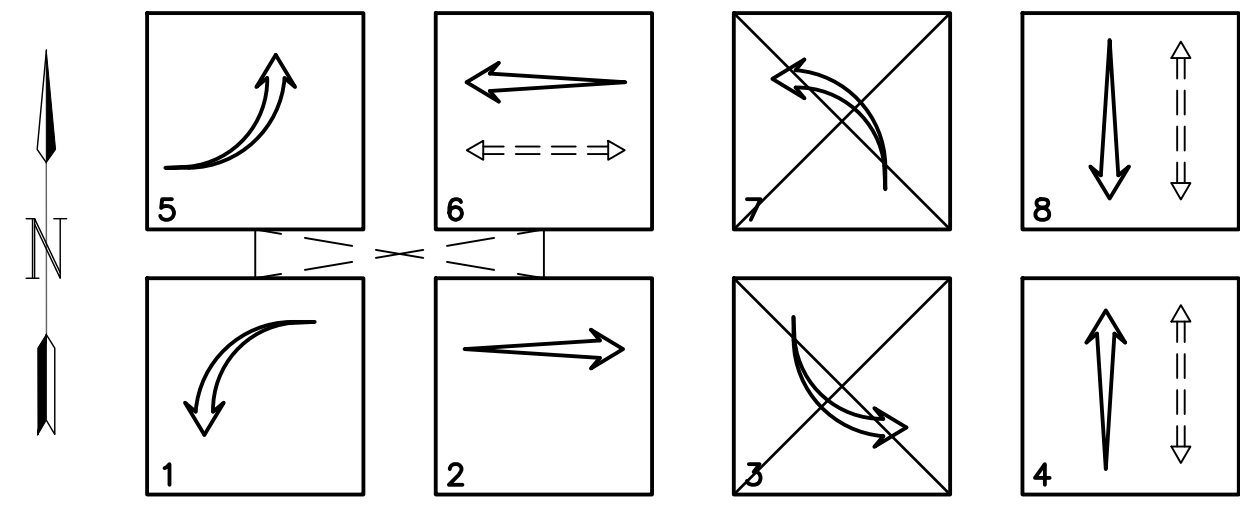


**PHASE DIAGRAM**



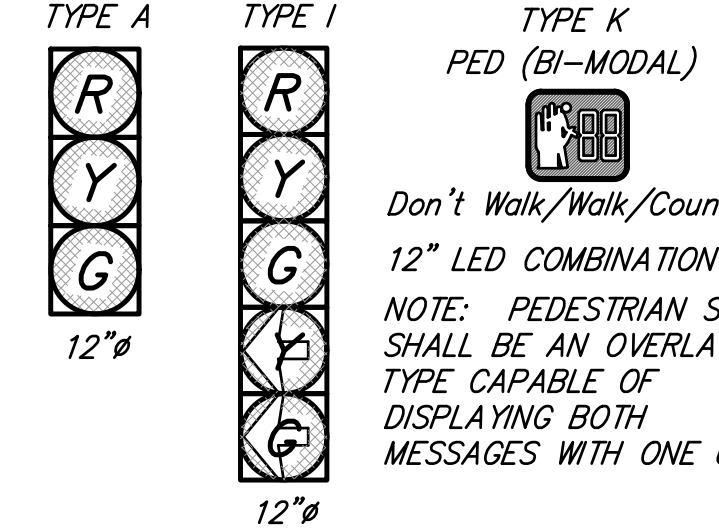
**MISCELLANEOUS NOTES**

1. REMOVE EXISTING STRIPING AND PAVEMENT MARKINGS WITHIN PAVEMENT LIMITS.
2. ALL NEW BASES, CAPS AND PADS TO BE FLUSH WITH ADJACENT GRADE OR CONCRETE
3. SIDEWALK REMOVALS FOR THE NE AND SOUTH AREAS OF THE INTERSECTION TO MATCH EXISTING ELEVATIONS AND GRADES.

**TRAFFIC SIGNAL NOTES**

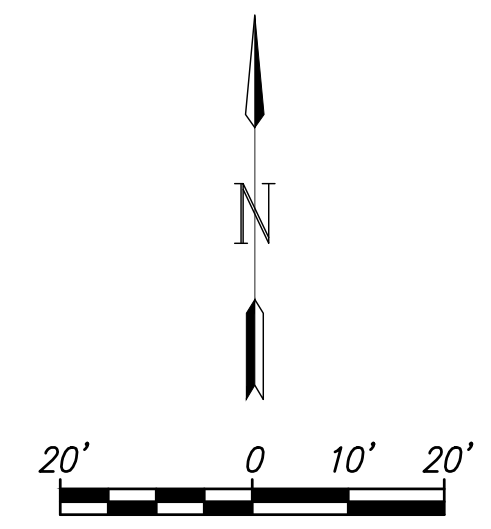
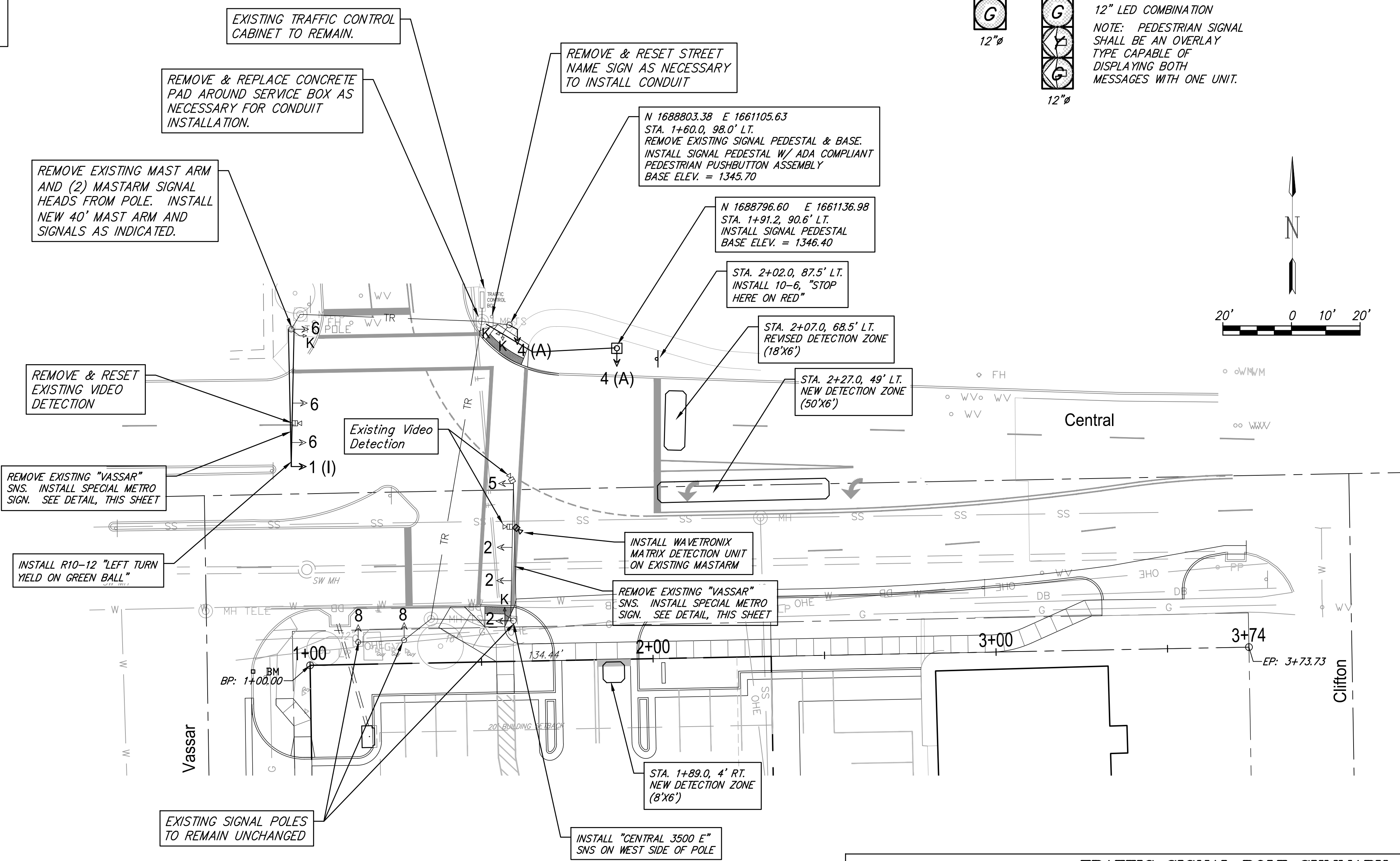
1. NEW VEHICLE DETECTION SYSTEM SHALL BE A WAVETRONIX SMARTSENSOR MATRIX SYSTEM. OTHER SYSTEMS MAY BE USED ONLY WITH THE APPROVAL OF CITY OF WICHITA TRAFFIC ENGINEERING.
2. SERVICE BOXES AND CONDUIT ARE EXISTING UNLESS OTHERWISE NOTED.
3. NEW VEHICLE DETECTION LOCATIONS SHALL BE COORDINATED WITH THE MANUFACTURER'S REPRESENTATIVE AND THE FIELD ENGINEER. EXISTING DETECTION ZONES SHALL REMAIN UNCHANGED UNLESS OTHERWISE NOTED.
4. CONTRACTOR TO COORDINATE WITH UTILITY COMPANIES WHEN WORKING IN CLOSE PROXIMITY TO OVERHEAD UTILITIES.
5. EXISTING SIGNALS SHALL REMAIN IN OPERATION DURING CONSTRUCTION UNLESS OTHER TEMPORARY TRAFFIC CONTROL IS INSTALLED BY CONTRACTOR. ALL PROPOSED TEMPORARY TRAFFIC CONTROL MEASURES SHALL BE SUBMITTED TO BRIAN COON FOR APPROVAL.
6. NEW ADA COMPLIANT PEDESTRIAN PUSHBUTTONS SHALL BE INSTALLED ON THE EXISTING POLES AT THE NE AND SE CORNERS OF THE INTERSECTION. PELCO, POLARA, OR CAMPBELL APS UNITS ARE ACCEPTABLE. SUBMITTALS FOR NEW BUTTONS MUST BE APPROVED BY CITY OF WICHITA PRIOR TO INSTALLATION.
7. PHASES 4 & 8 SHALL BE SPLIT PHASE OPERATION.
8. VIDEO CABLES SHALL RUN CONTINUOUS. NO SPLICES WILL BE ALLOWED. ALL WIRE SHALL BE SOLID WIRE, STRANDED WIRE WILL NOT BE ALLOWED.
9. 2" RETRO-REFLECTIVE TAPE SHALL BE PROVIDED ON ALL BACKING PLATES (NEW AND EXISTING).
10. POLES AND MAST ARMS SHALL MEET AASHTO 2013 SPECIFICATIONS.
11. CONTRACTOR SHALL DISCONNECT AND/OR REMOVE ALL CONDUIT & WIRING AS NECESSARY PRIOR TO THE REMOVAL OF THE EXISTING MAST ARM, POLE BASE OR OTHER EQUIPMENT. WIRING, MOUNTING HARDWARE, SIGNAL HEADS AND OTHER EQUIPMENT SHALL BE SALVAGED AND RE-USED WHERE POSSIBLE.

NOTE: ALL SIGNALS SHALL BE L.E.D.  
**SIGNAL FACE TYPES**



NOTE:

CONTRACTOR SHALL FIELD ADJUST STRIPING LIMITS TO MATCH STRIPING ON EITHER SIDE OF PROJECT. STRIPING WILL BE REQUIRED OUTSIDE THE PAVEMENT REMOVAL LIMITS.



**NEW TRAFFIC SIGNAL HEAD SUMMARY**

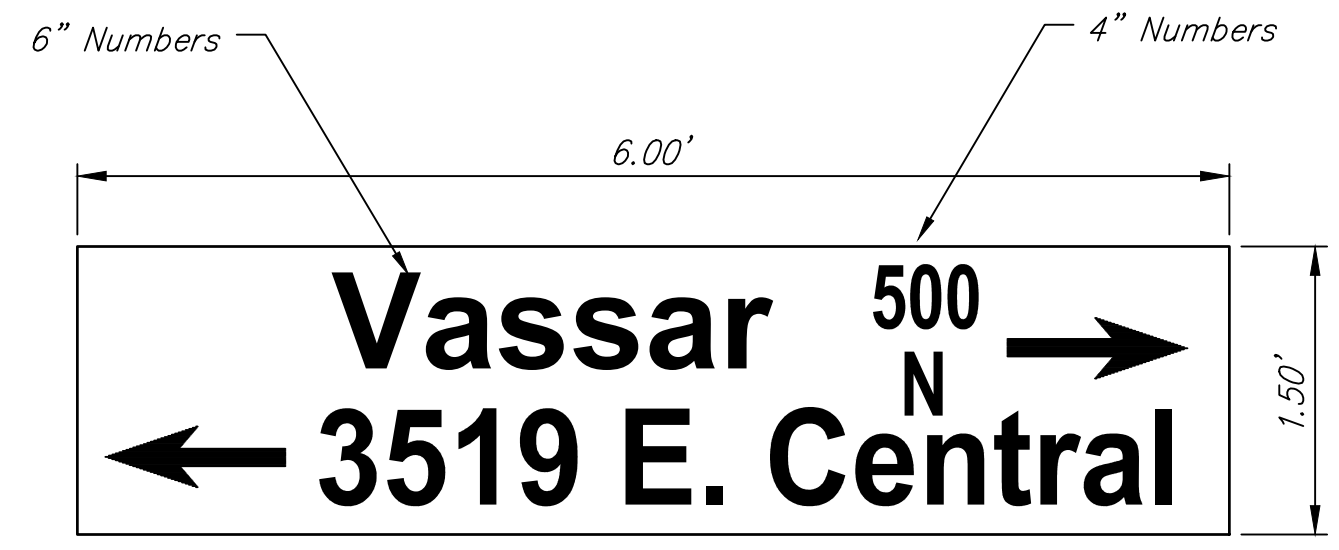
SIGNAL PHASE	TYPE	MOUNTING BRACKET	QUANTITY
1	I	TYPE I	1
4	A	TYPE I	2

**TRAFFIC SIGNAL POLE SUMMARY**

STATION	TYPE	ARM LENGTH (LF)	SIGNALS ON ARM	OTHER EQUIP. ON ARM	SIGNALS ON POLE	NOTES
0+96.4, 98.0 Lt.	STEEL	40 (New)	(2) A, (1) I	SNS, R10-12, VIDEO DETECTION	(1) A, (1) K	Existing Pole, Replace Mast Arm & Add Type I Signal to Arm, Reuse Type A Signals

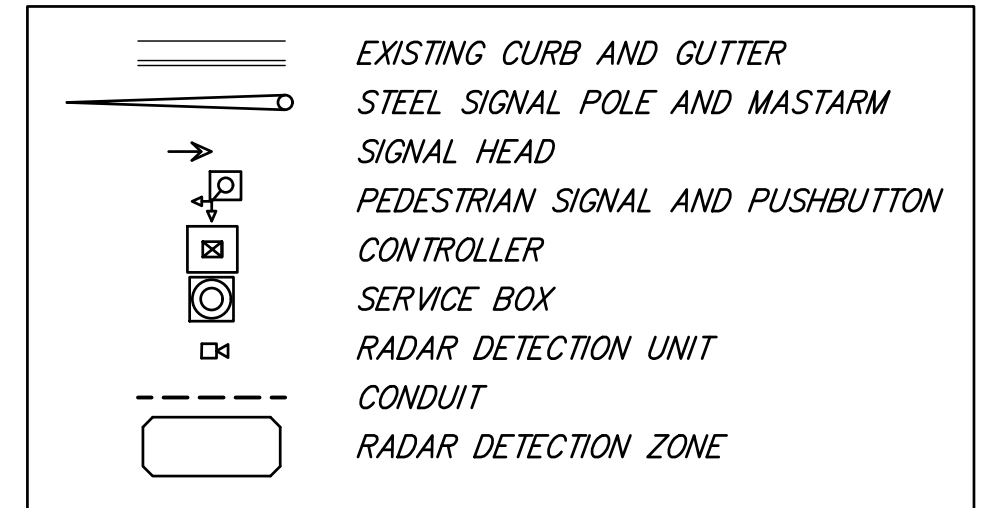
**TRAFFIC SIGNAL PEDESTAL SUMMARY**

STATION	TYPE	SIGNALS ON POLE	NOTES
1+91.2, 90.6' Lt.	STEEL	(1) A	
1+60.0, 98.0' Lt.	STEEL	(1) A, (2) K	Re-Use Existing Type K Signals



**SPECIAL METRO SIGN**  
(REVERSE ON EAST MASTARM)

**LEGEND**



**Central & Vassar Signal Plan**

924 N. Main  
Wichita, Kansas  
316-264-8008

DATE: 1-16-18  
DESIGN: KWL  
DRAWN: KWL  
REVIEW: .  
SHEET: 5 OF 10

PROJECT NUMBER: 472-85413    RB JOB NO.: 4975T    DWG. SCALE: ...

DRAWING FILE: 4975E Private Paving Plan Base [Signal Plan]