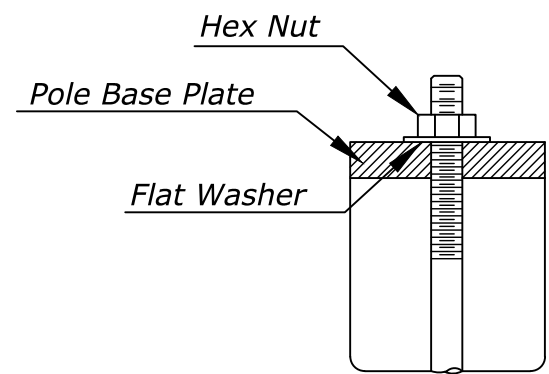
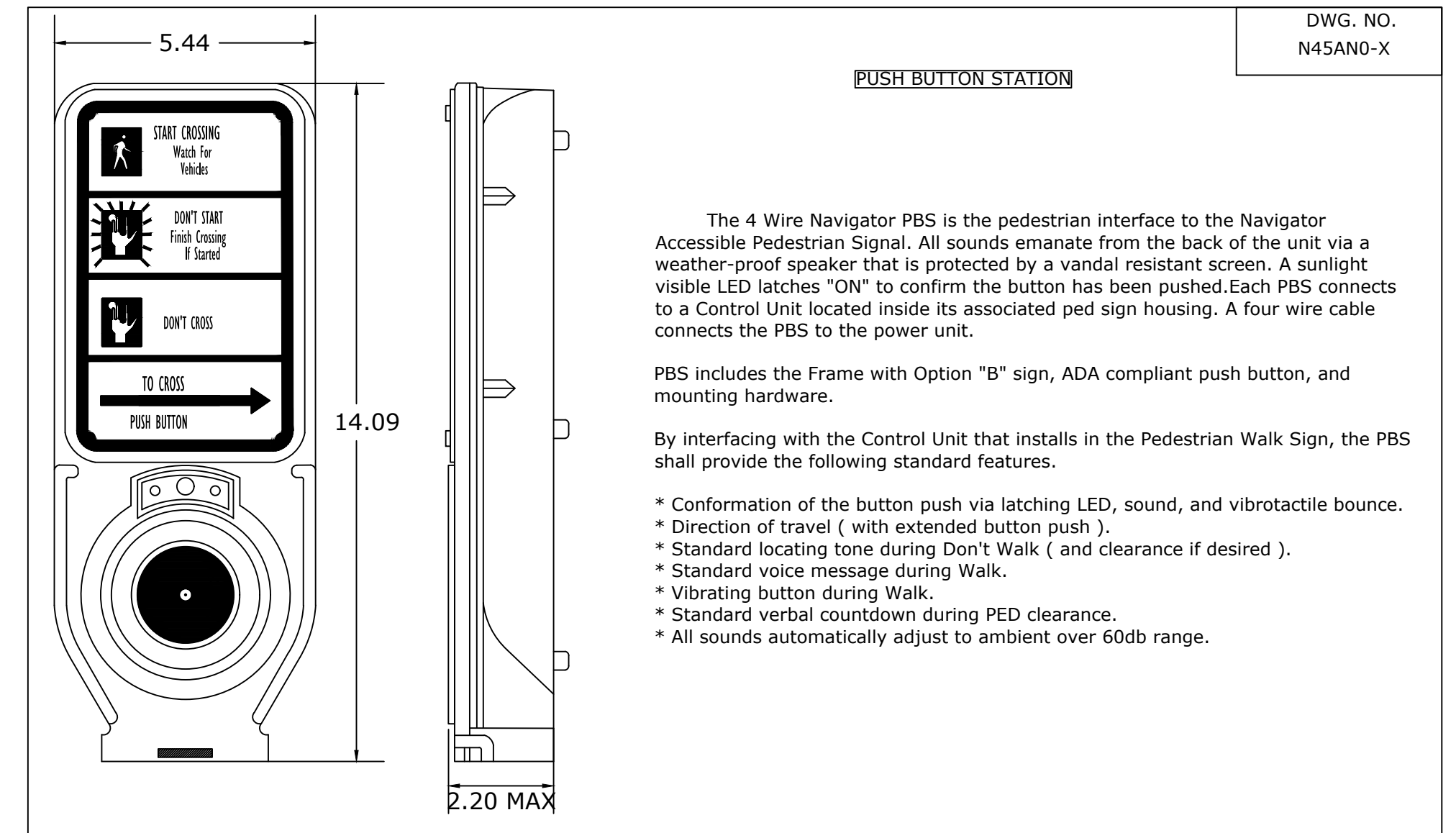
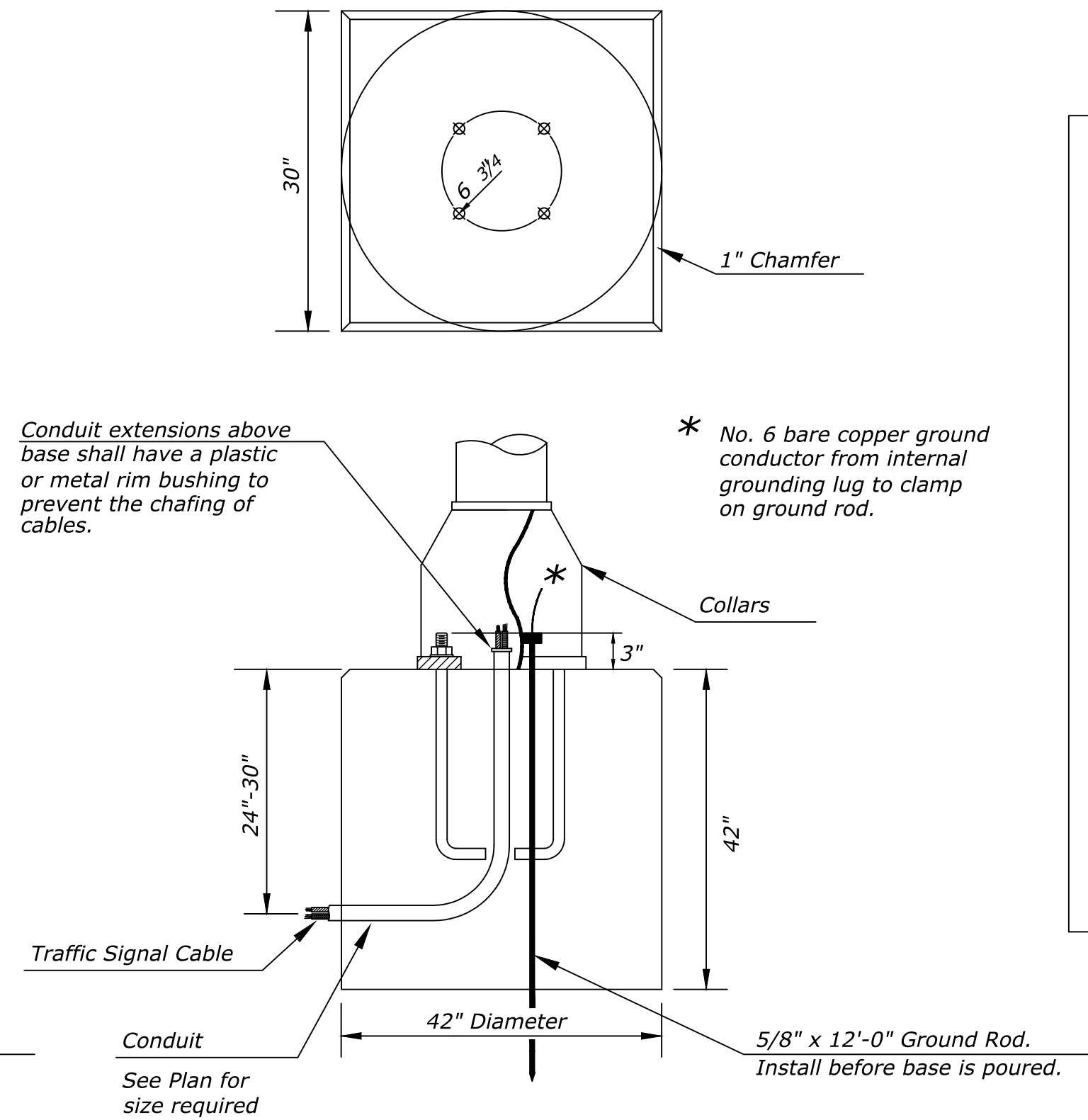
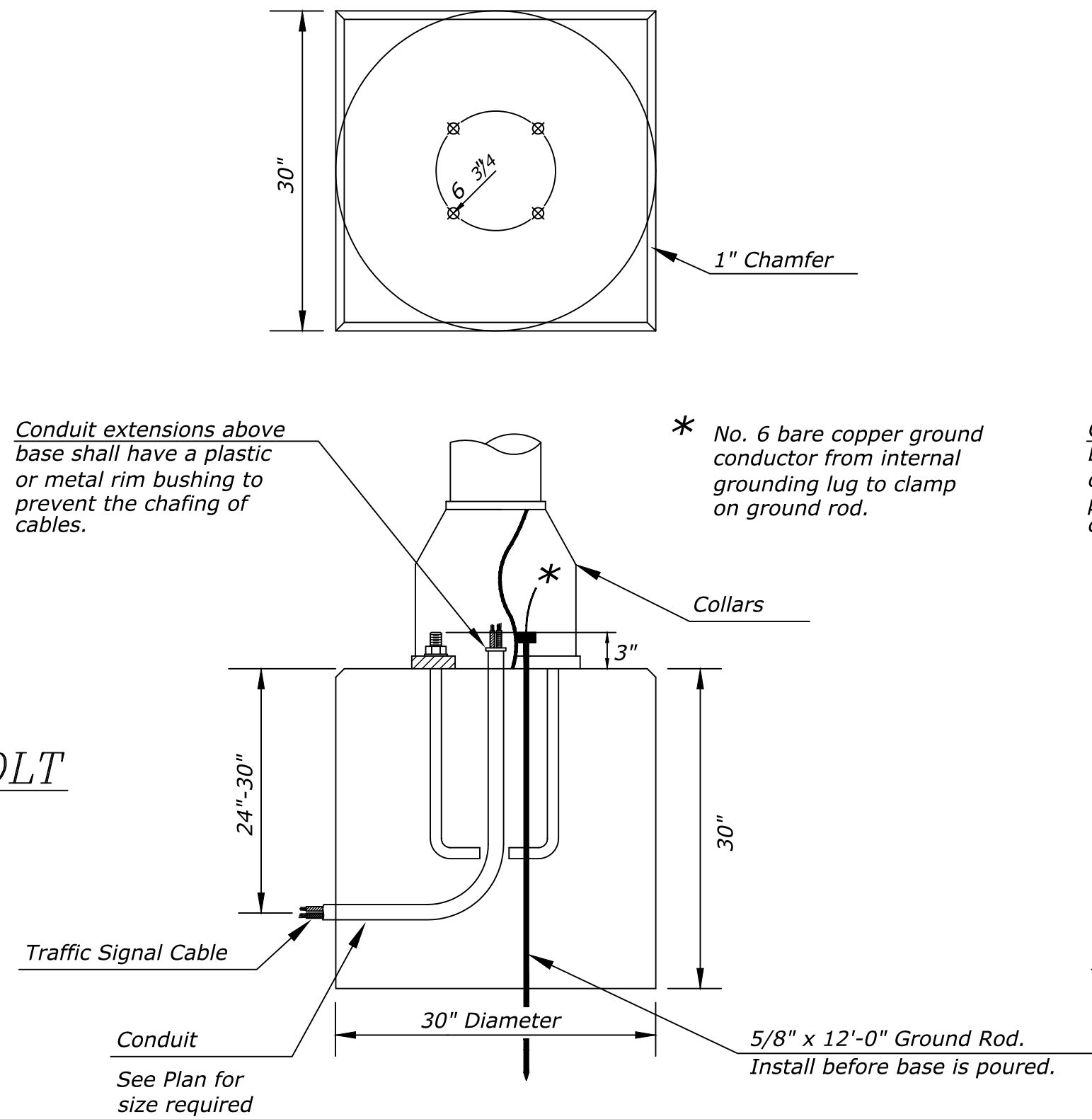


Use Keystone "No-Weld Number 1 Anti-Seize Compound" on all bolts & nuts.



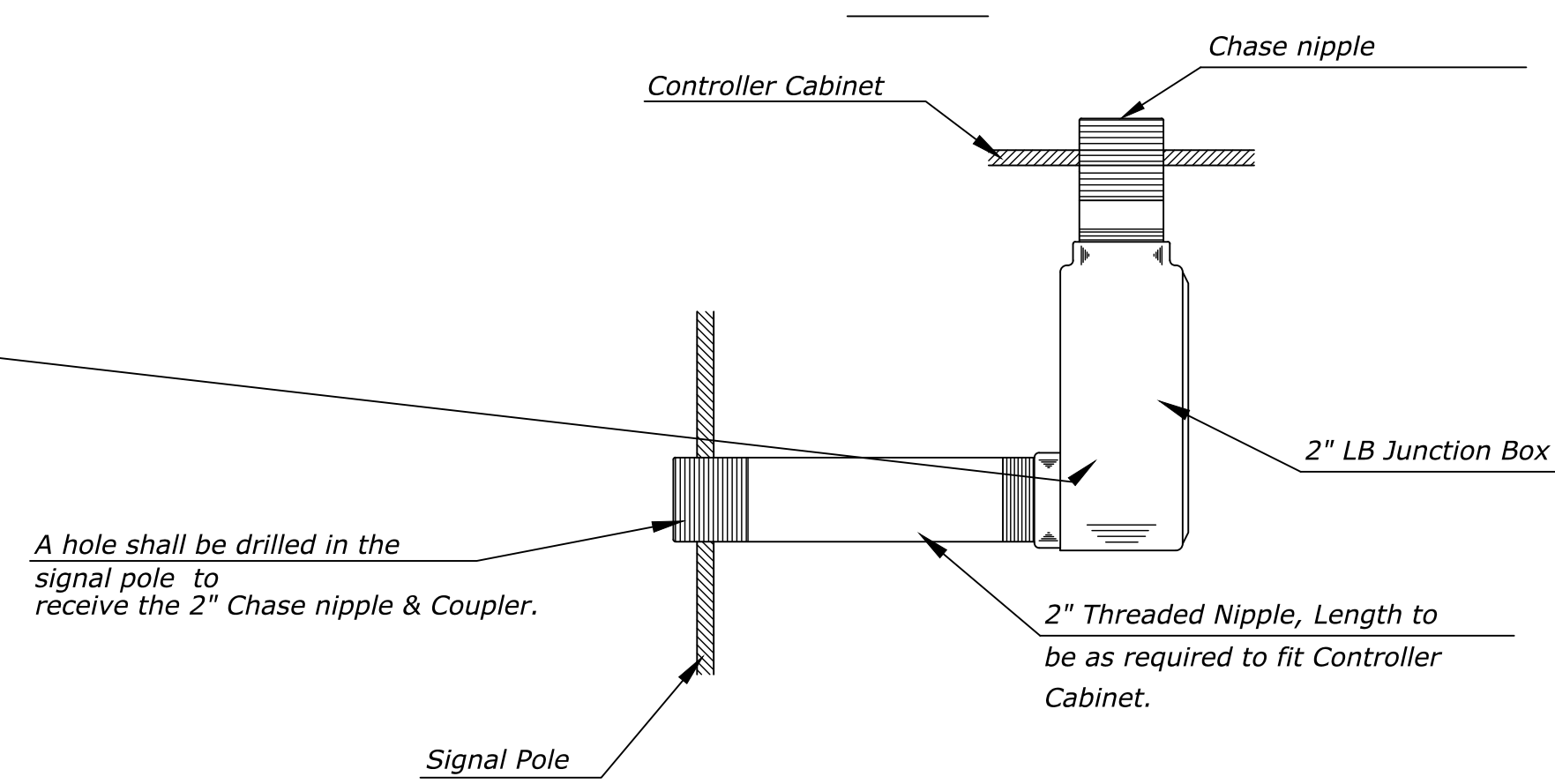
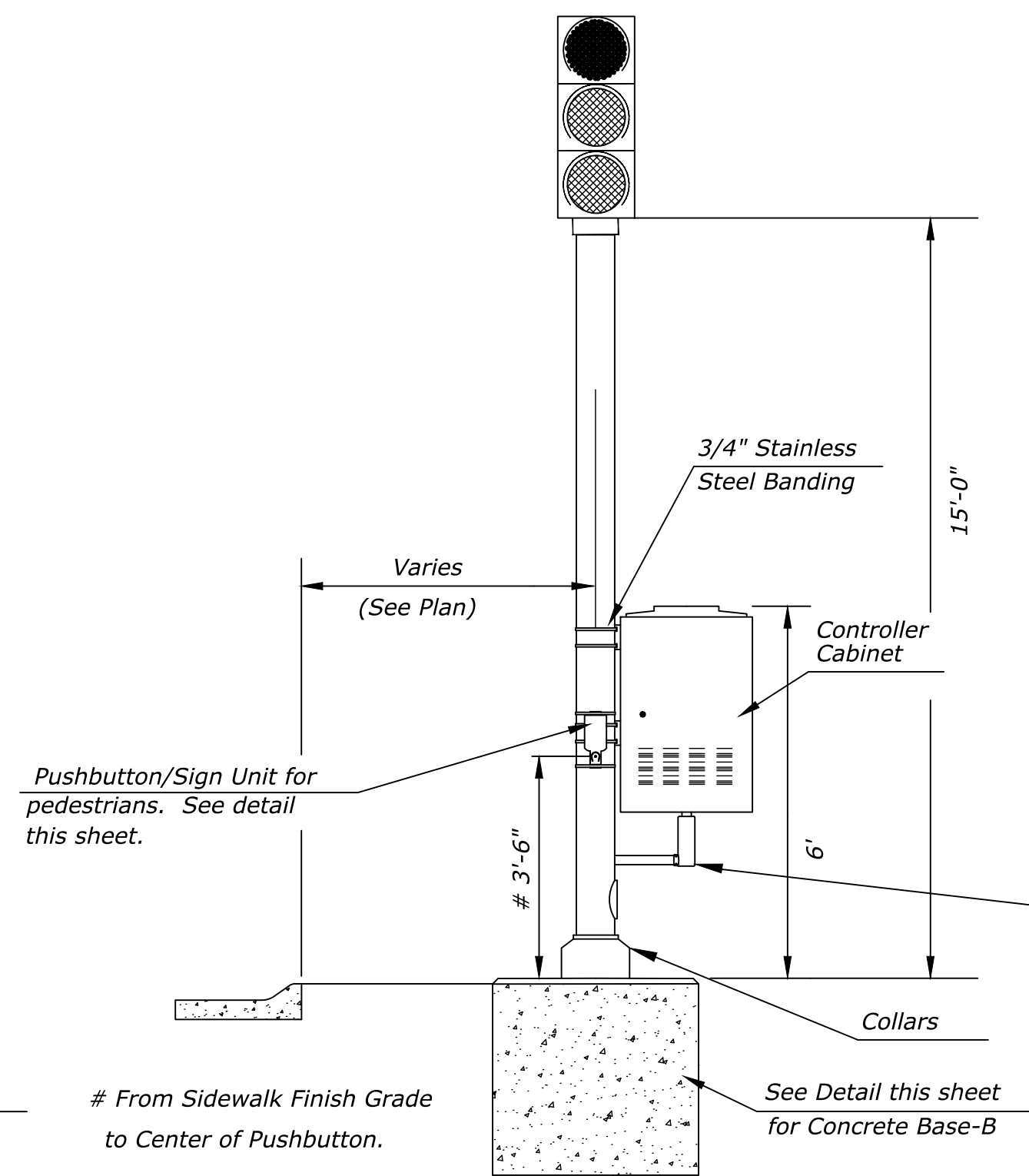
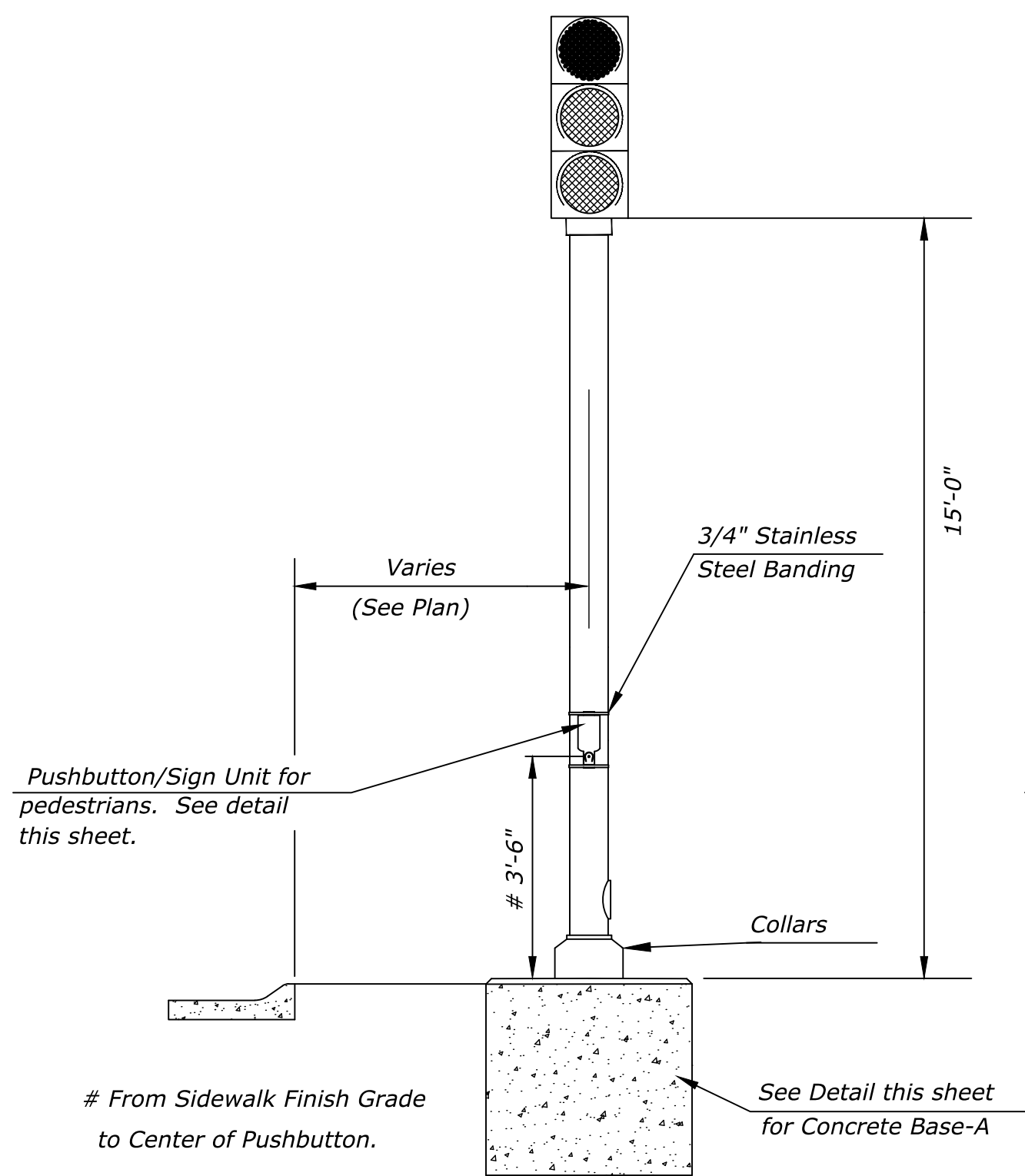
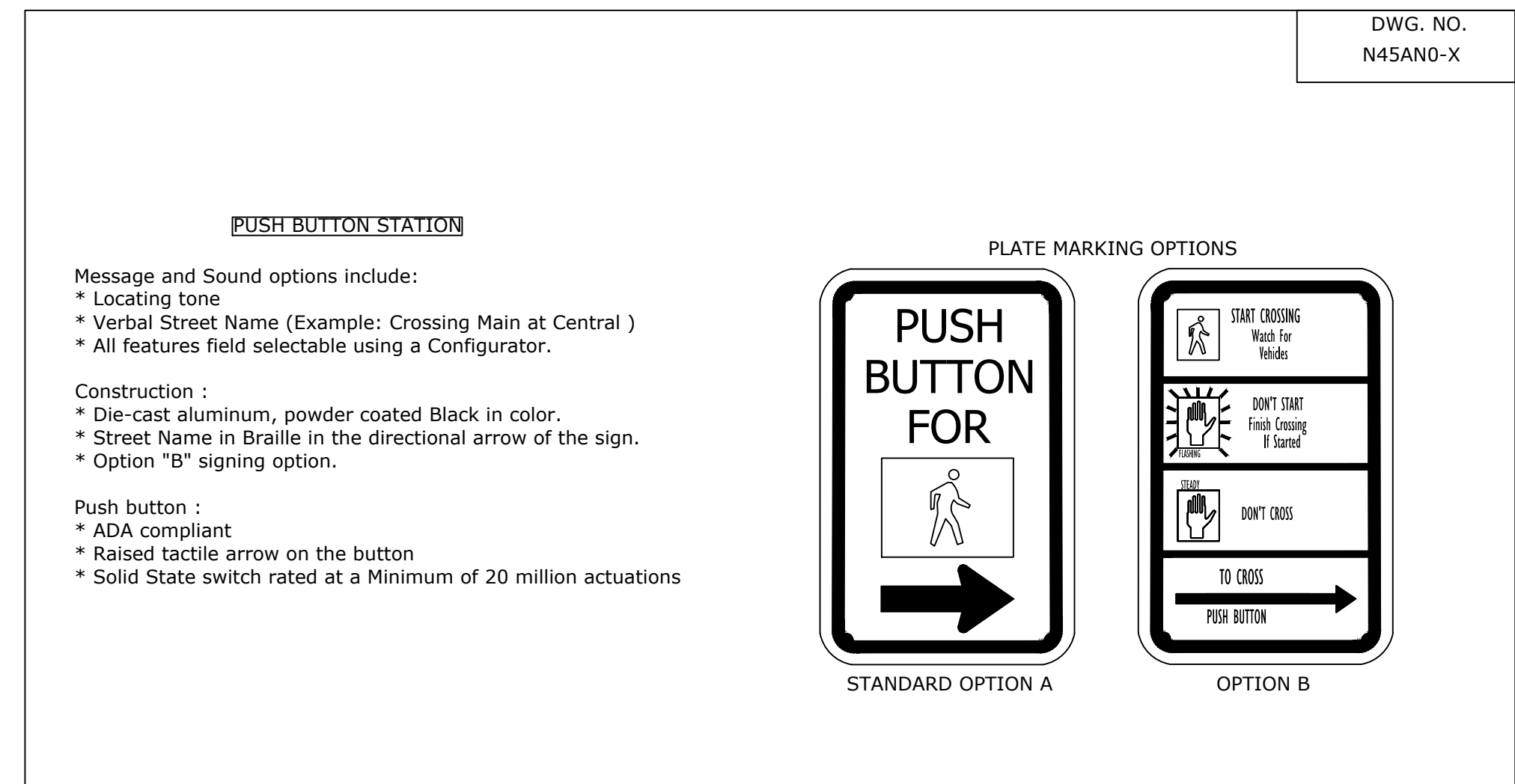
**ANCHOR BOLT  
DETAIL**



**PEDESTRIAN PUSHBUTTON/SIGN  
UNIT DETAIL**

**CONCRETE BASE-A DETAIL**

**CONCRETE BASE-B DETAIL FOR  
TRAFFIC SIGNAL PEDESTAL  
WITH CONTROLLER CABINET**



REVISD: AUGUST 2014

**SIGNAL PEDESTAL & BASE  
WITH ADA PUSH BUTTON**

TRAFFIC ENGINEER  
**BRIAN A. COON P.E.**

PROJECT NUMBER 472-85413	OCA NUMBER 766399	DATE
-----------------------------	----------------------	------

CITY ENGINEER'S OFFICE  
CITY HALL - SEVENTH FLOOR  
455 NORTH MAIN STREET  
WICHITA, KANSAS 67202-1620  
(316) 268-4501

SHEET  
8

10