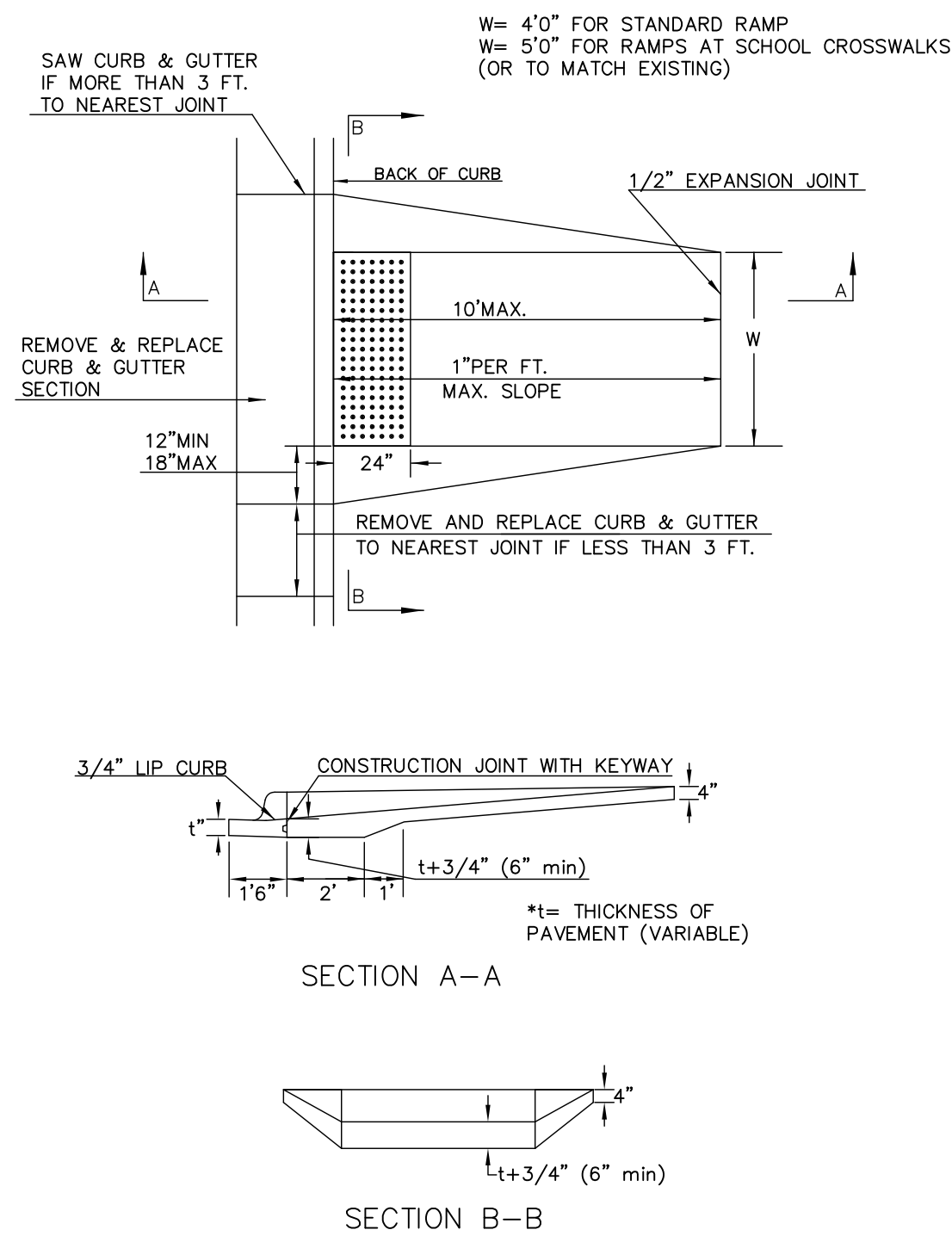
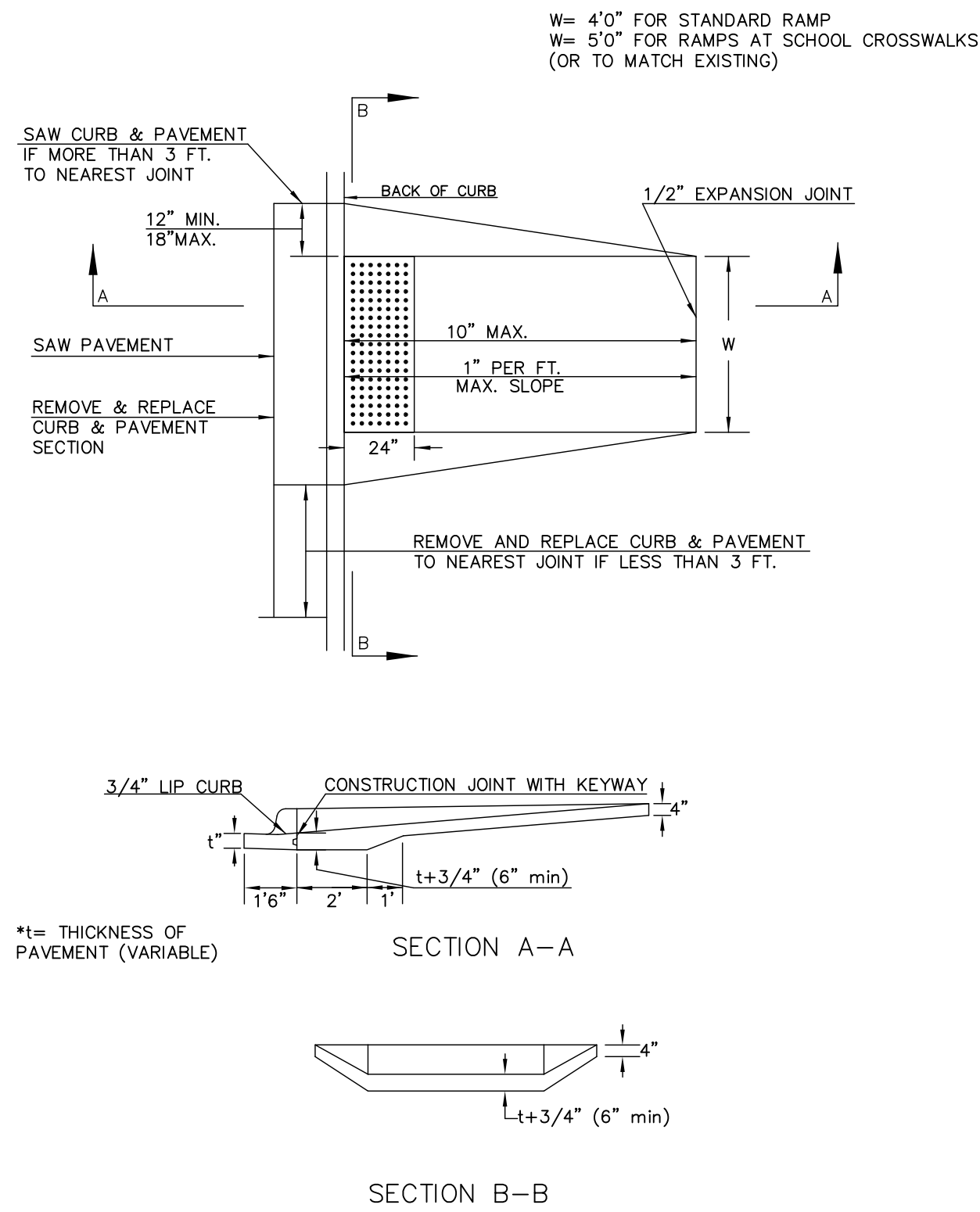


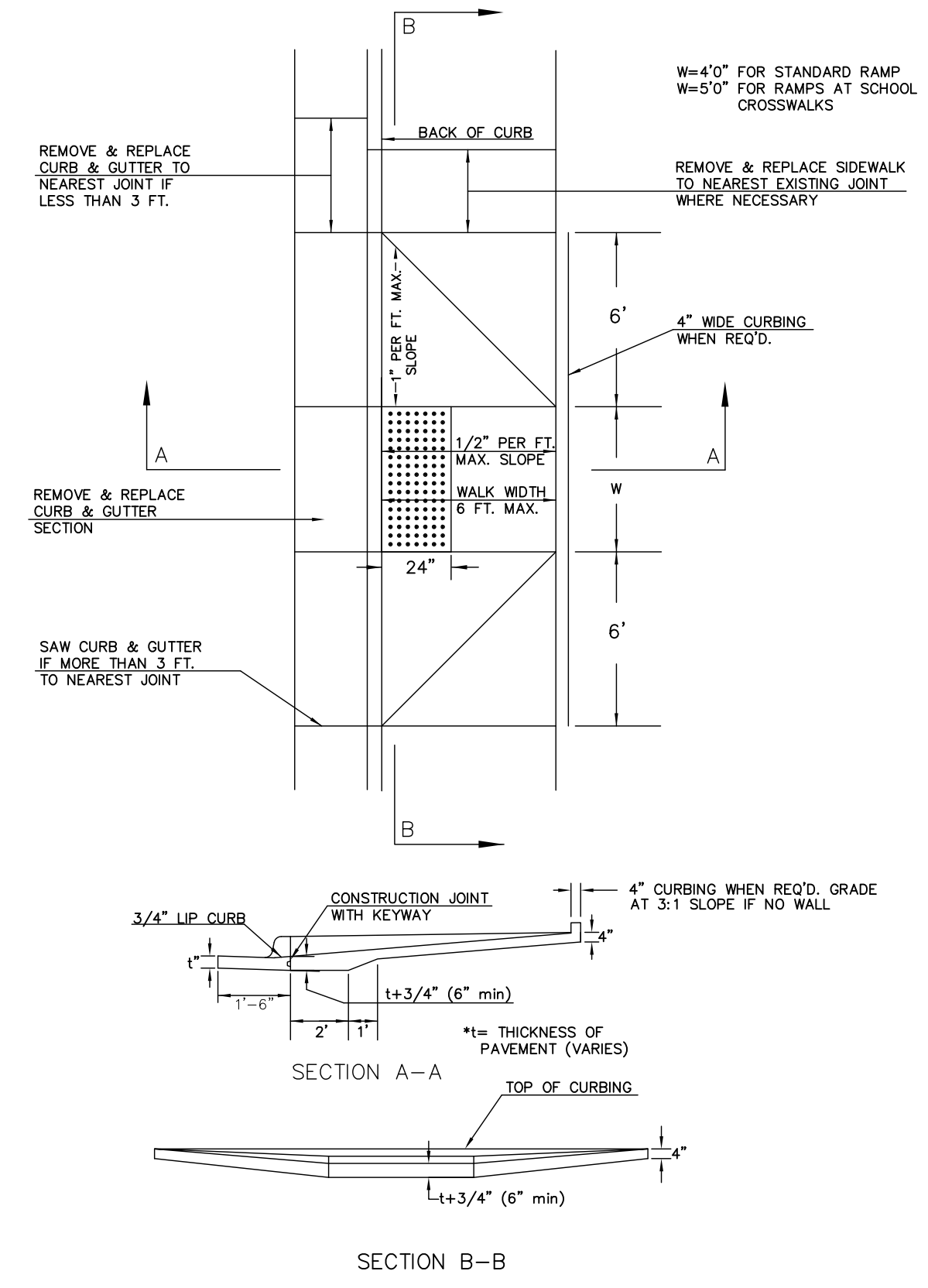
STANDARD WHEELCHAIR RAMP  
CONSTRUCTION DETAIL FOR STREETS  
WITH COMBINED CURB & GUTTER  
(TYPE A)



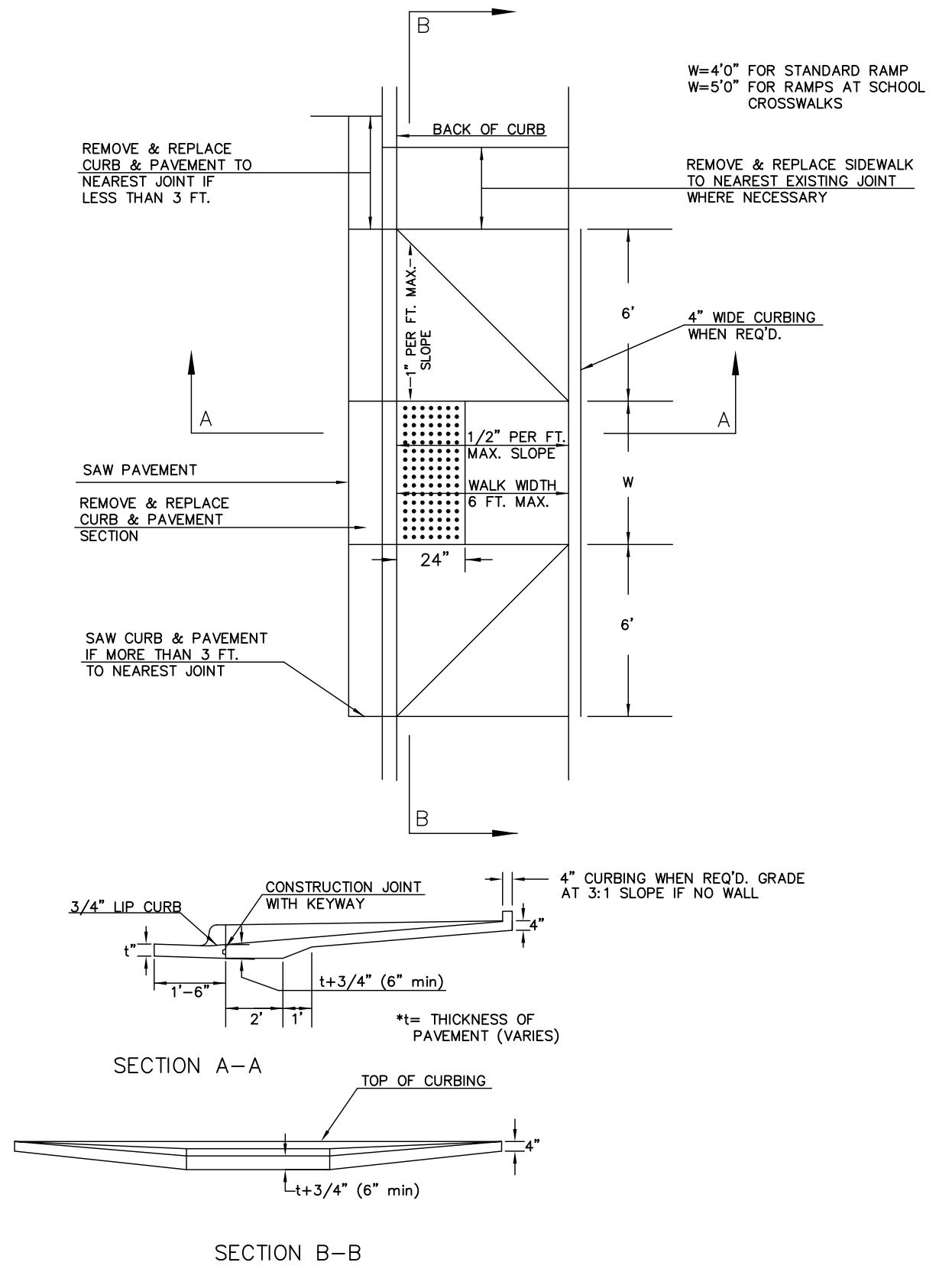
STANDARD WHEELCHAIR RAMP CONSTRUCTION DETAIL FOR  
CONCRETE STREETS WITH MONOLITHIC CURB  
(TYPE A)



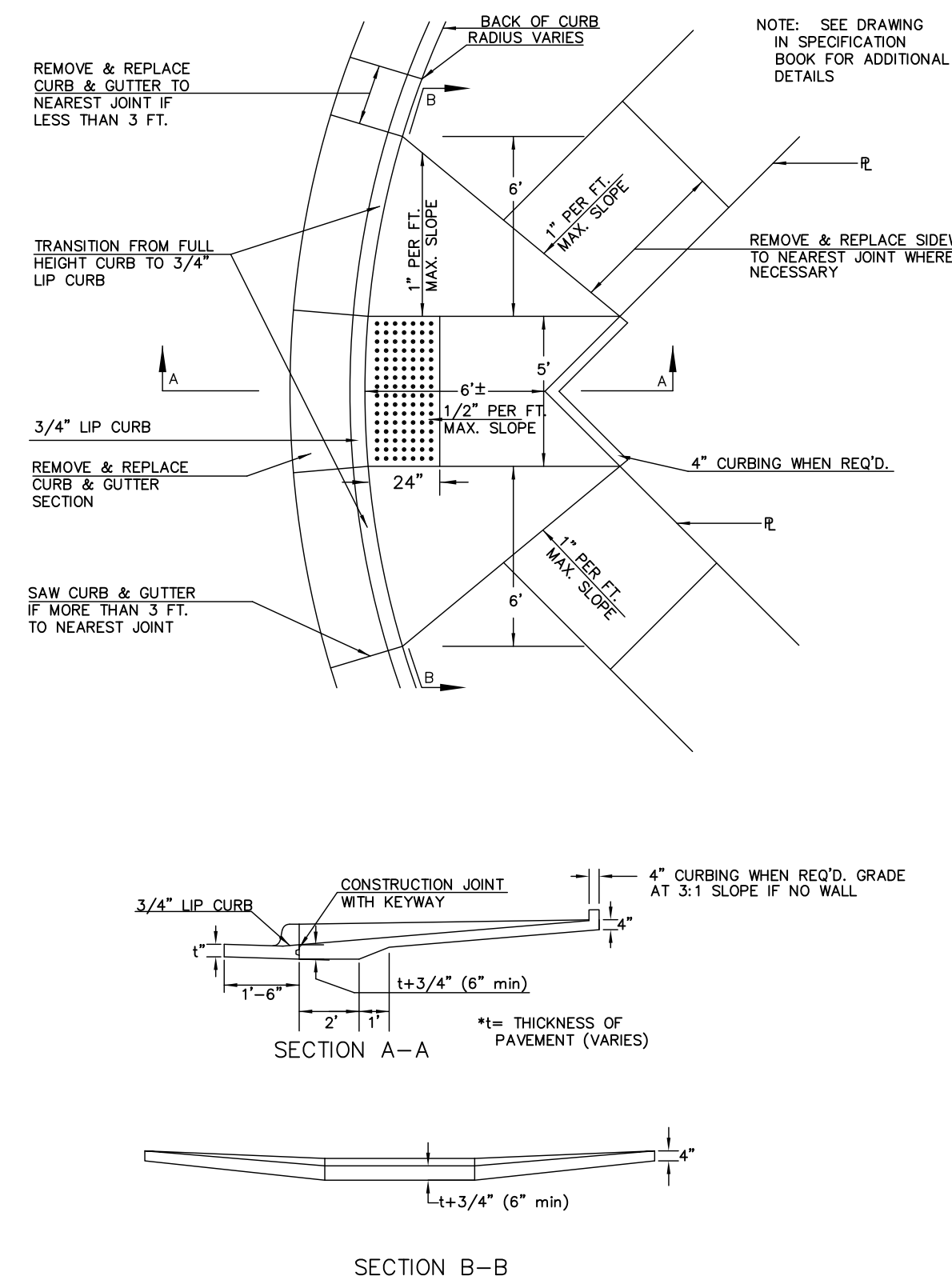
STANDARD WHEELCHAIR RAMP CONSTRUCTION DETAIL FOR  
STREETS WITH COMBINED CURB & GUTTER AND FULL WALK  
(TYPE B)



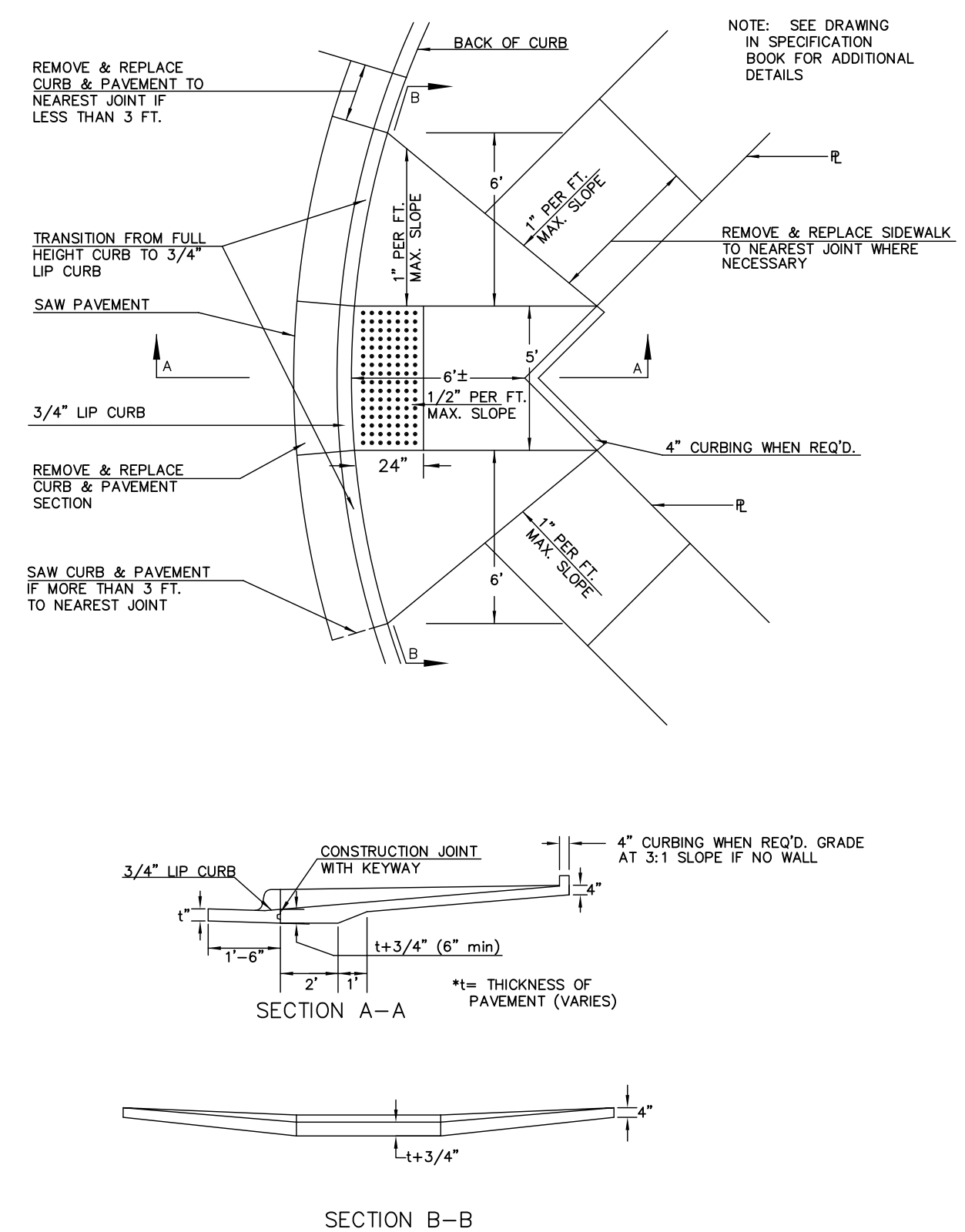
STANDARD WHEELCHAIR RAMP CONSTRUCTION DETAIL FOR  
STREETS WITH MONOLITHIC CURB AND FULL WALK  
(TYPE B)



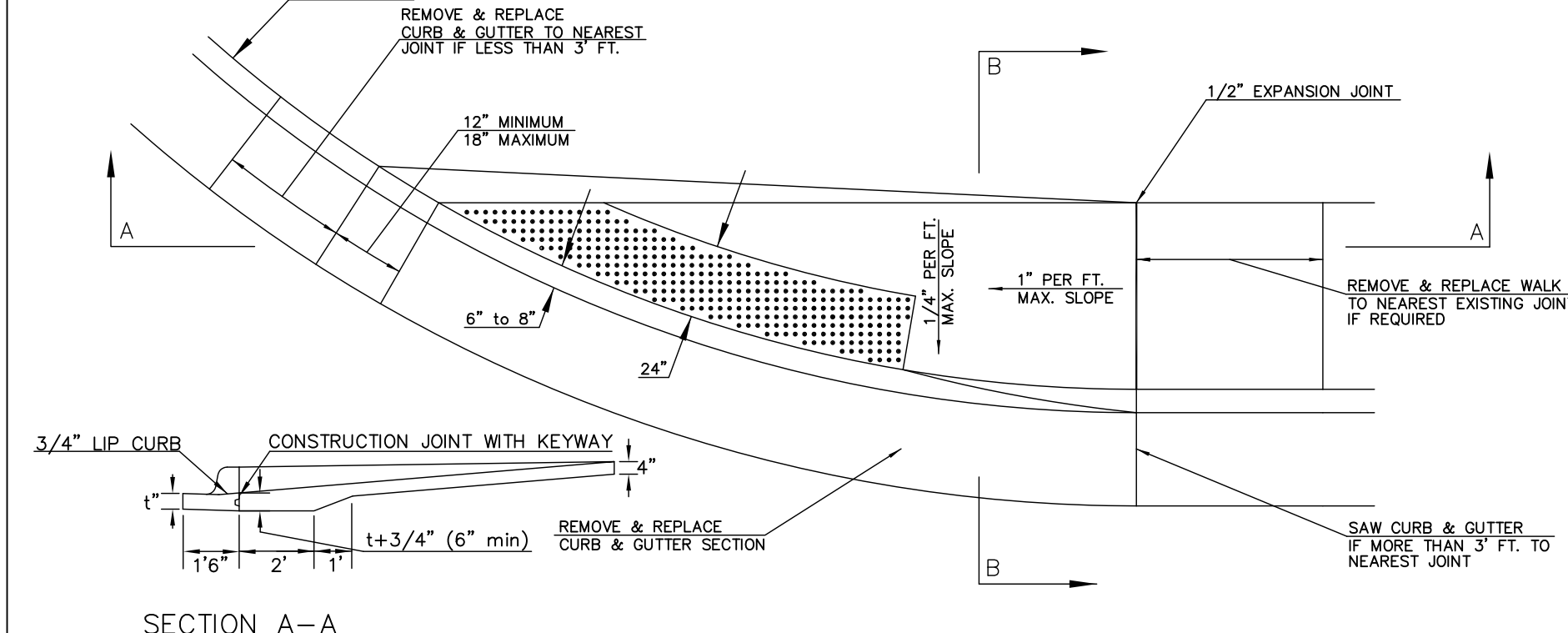
STANDARD WHEELCHAIR RAMP CONSTRUCTION DETAIL FOR  
STREET WITH COMBINED CURB AND GUTTER ON RADIUS  
WITH 6'± FROM BACK OF CURB TO PROPERTY CORNER  
(TYPE C)



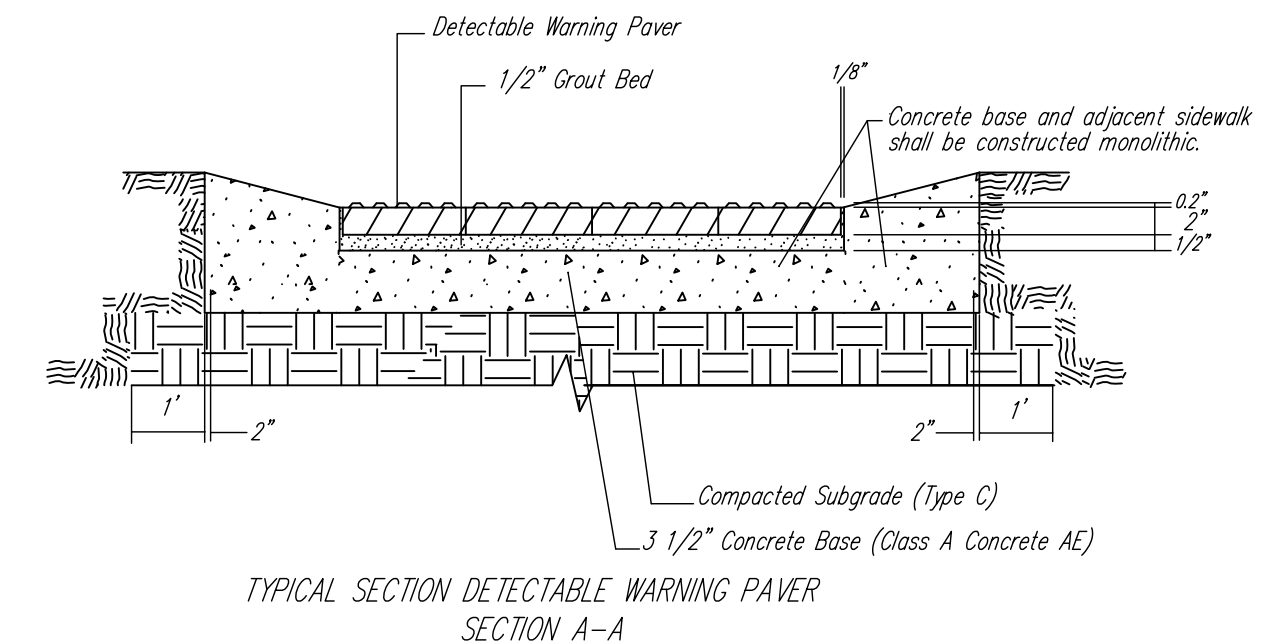
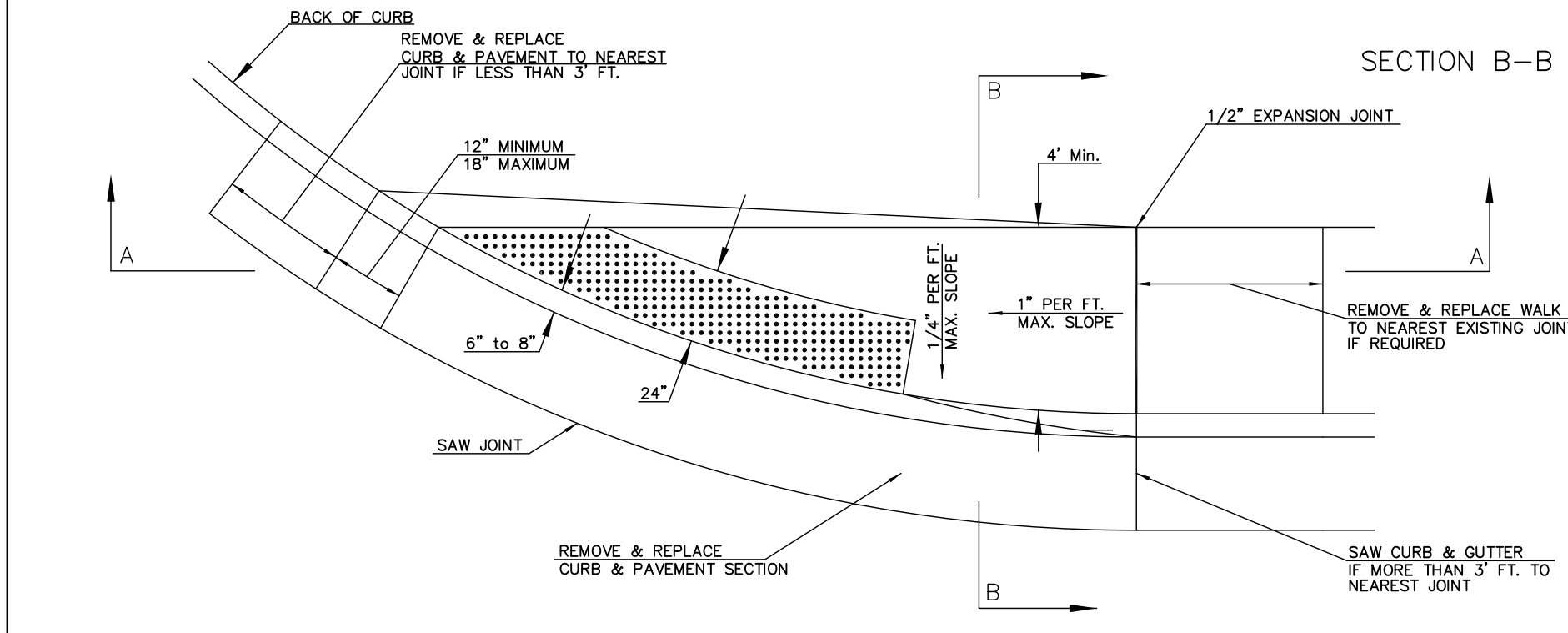
STANDARD WHEELCHAIR RAMP CONSTRUCTION DETAIL FOR  
STREET WITH MONOLITHIC CURB ON RADIUS  
WITH 6'± FROM BACK OF CURB TO PROPERTY CORNER  
(TYPE C)



STANDARD WHEELCHAIR RAMP CONSTRUCTION DETAIL FOR  
STREETS WITH COMBINED CURB & GUTTER  
WITH ONE FULL SIDEWALK  
(TYPE D)



STANDARD WHEELCHAIR RAMP CONSTRUCTION DETAIL FOR  
STREETS WITH MONOLITHIC CURB  
WITH ONE FULL SIDEWALK  
(TYPE D)



NOTE: HANOVER DETECTABLE WARNING PAVERS (OR AN APPROVED ALTERNATE) SHALL BE USED IN ALL WHEELCHAIR RAMPS. THE 11 3/4" RED 15" PAVES SHALL BE USED IN ALL APPLICATIONS.  
HANOVER ARCHITECTURAL PRODUCTS  
240 BENDER ROAD  
HANOVER, PA 17331  
1-717-637-0500  
www.hanoverpavers.com



<b>WHEELCHAIR RAMP DETAILS WITH DETECTABLE WARNING</b>		
CITY ENGINEER <b>GARY JANZEN, P.E.</b>		
PROJECT NUMBER	OCA NUMBER	DATE
		08/2013
CITY ENGINEER'S OFFICE CITY HALL - SEVENTH FLOOR 455 NORTH MAIN STREET WICHITA, KANSAS 67202-1620 (316) 268-4501		SHEET <b>12 of 28</b>