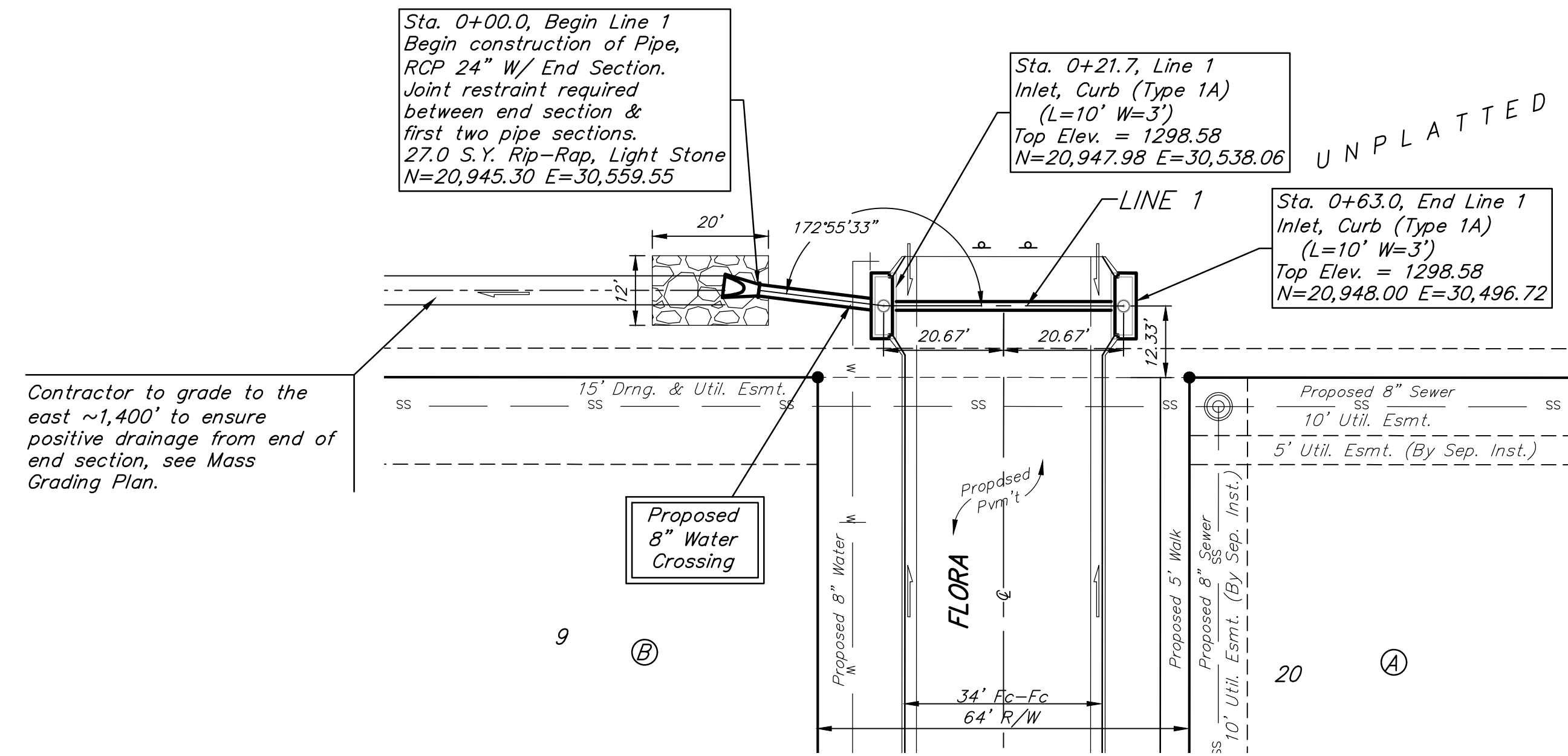


BENCHMARKS:

BM #1: "□" Cut in face of curb inlet near SE corner of Lot 30, Block C, Gray's 5th Add. Elev. = 1297.86 NAVD88

BM #2: "□" Cut in top of curb on east side of Flora, ±10' north of south property line of Gray's 5th Add. Elev. = 1302.40 NAVD88

BM #3: "□" Cut in top of curb on east side of Flora, adjacent to common lot line of Lots 3&4, Block C, Gray's 5th Add. Elev. = 1305.32 NAVD88



Contractor to grade to the east ~1,400' to ensure positive drainage from end of end section, see Mass Grading Plan.

