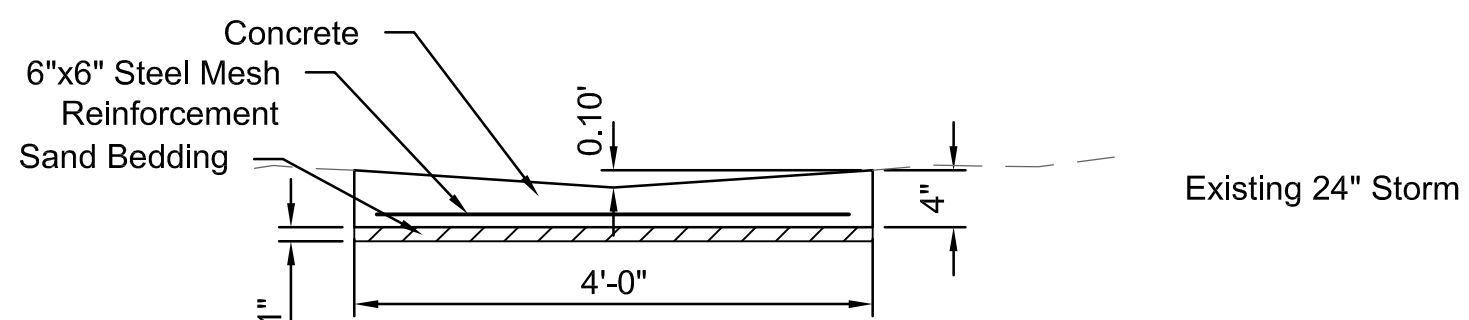
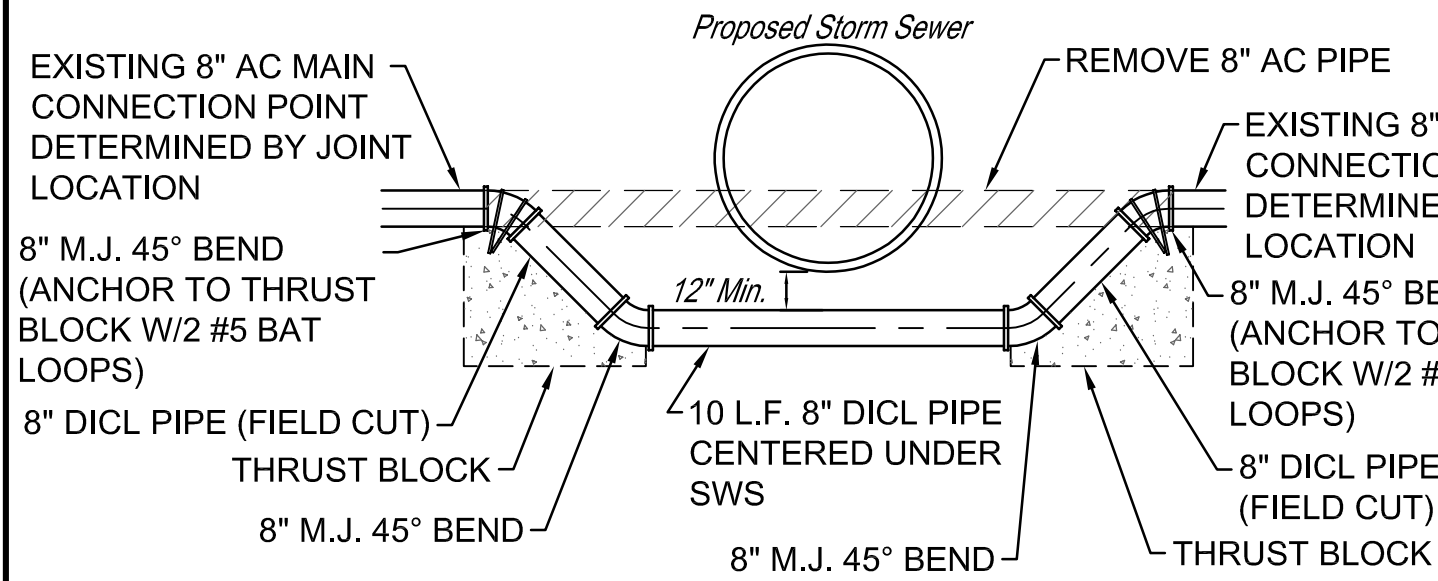
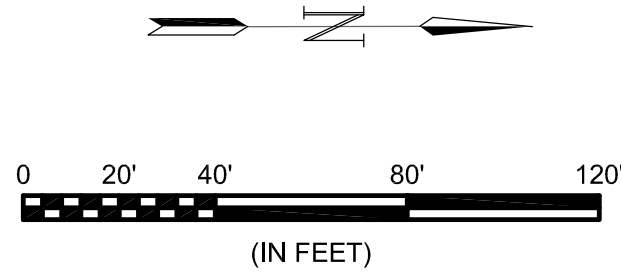


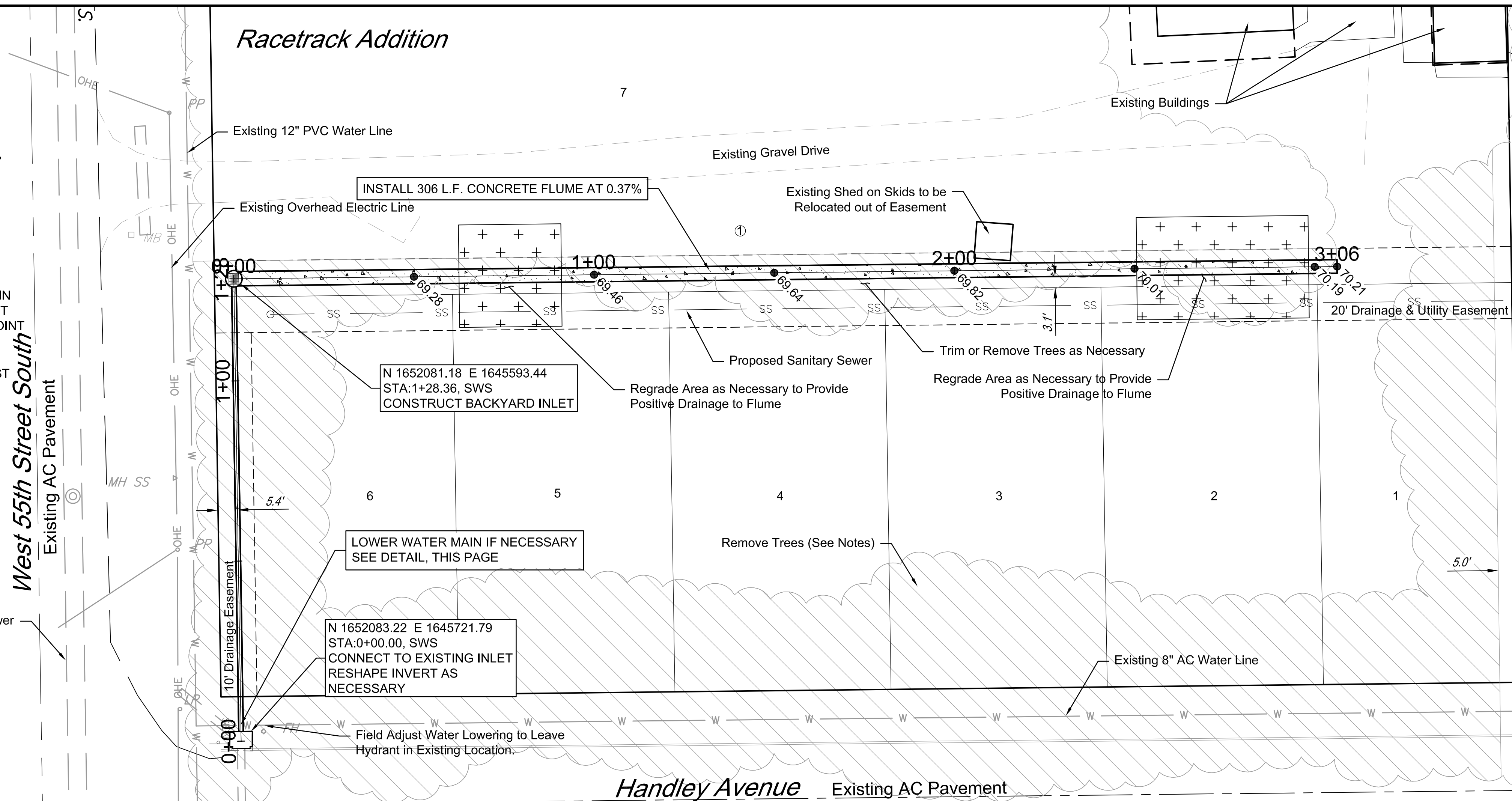
**Tree Removal Notes:**

1. Where indicated, trees shall be completely removed.
2. Trees that are removed and trimmings from other trees shall be properly disposed of in accordance with local, state, and federal regulations.
3. Trimming of trees shall be done with suitable equipment that leaves the tree in healthy condition.



- NOTES:
1. CONSTRUCTION JOINTS SPACED @ 25' (CONSTRUCTION JOINTS MAY BE SAWN JOINTS)
  2. NOTE: EARTHWORK SHALL BE FILLED OR EXCAVATED TO ENSURE FLUME MEETS PROPOSED ELEVATIONS.

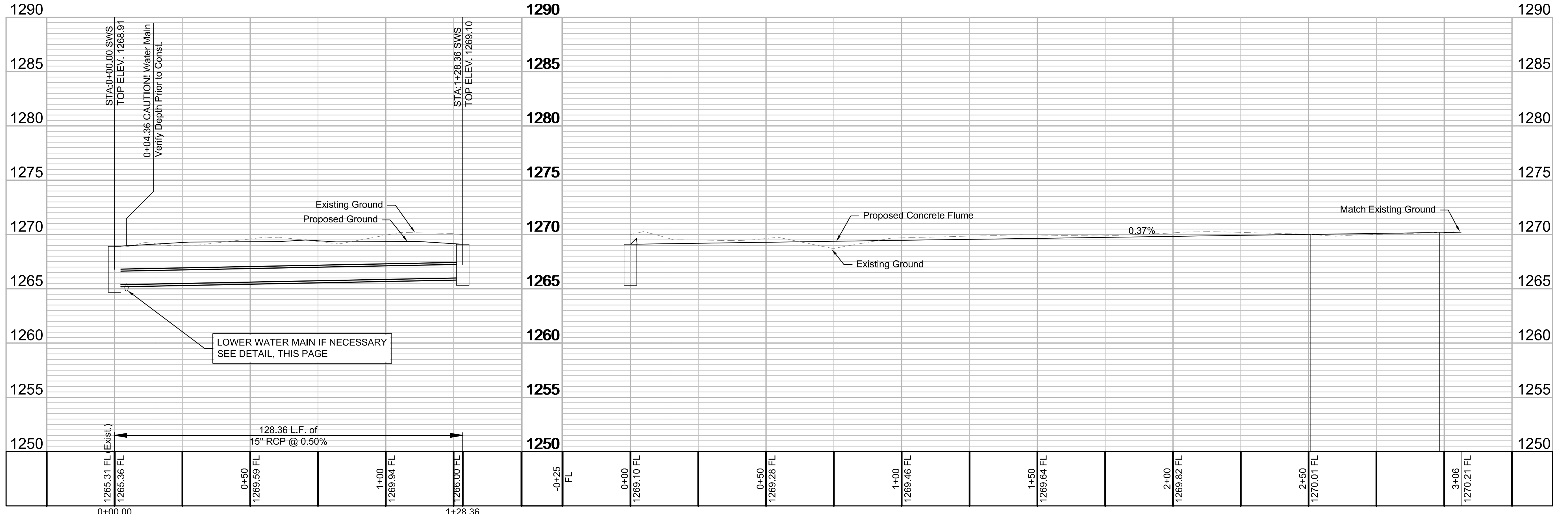
**Racetrack Addition**



**GARVER**  
© 2017 GARVER, LLC  
THIS DOCUMENT, ALONG WITH THE IDEAS AND DESIGNS CONVEYED HEREIN, SHALL BE CONSIDERED INSTRUMENTS OF PROFESSIONAL SERVICE AND ARE PROPERTY OF GARVER, LLC. ANY USE, REPRODUCTION, OR DISTRIBUTION OF THIS DOCUMENT, ALONG WITH THE IDEAS AND DESIGN CONTAINED HEREIN, IS PROHIBITED UNLESS AUTHORIZED IN WRITING BY GARVER, LLC OR EXPLICITLY ALLOWED IN THE GOVERNING PROFESSIONAL SERVICES AGREEMENT FOR THIS WORK.



BY	DATE	DESCRIPTION



CITY OF WICHITA  
WICHITA, KS

Plan & Profile

JOB NO.: 17267001  
DATE: DEC 2017  
DESIGNED BY: .  
DRAWN BY: .

BAR IS ONE INCH ON ORIGINAL DRAWING  
IF NOT ONE INCH ON THIS SHEET, ADJUST SCALES ACCORDINGLY.

DRAWING NUMBER

SHEET NUMBER **3** OF **6**

File: L:\2017\17267001 - Race Track Engineering\Drawings\C3D\Storm\7001\SWS-C103-DP.dwg, Last Save: 1/29/2018 3:15 PM, Last saved by: CDJurey  
 Last plotted by: Jurey, Caleb D., Plot Style: AECmonochrome.ctb, Plot Scale: 1:2,849, Plot Date: 1/29/2018 3:21 PM, Plotter used: None