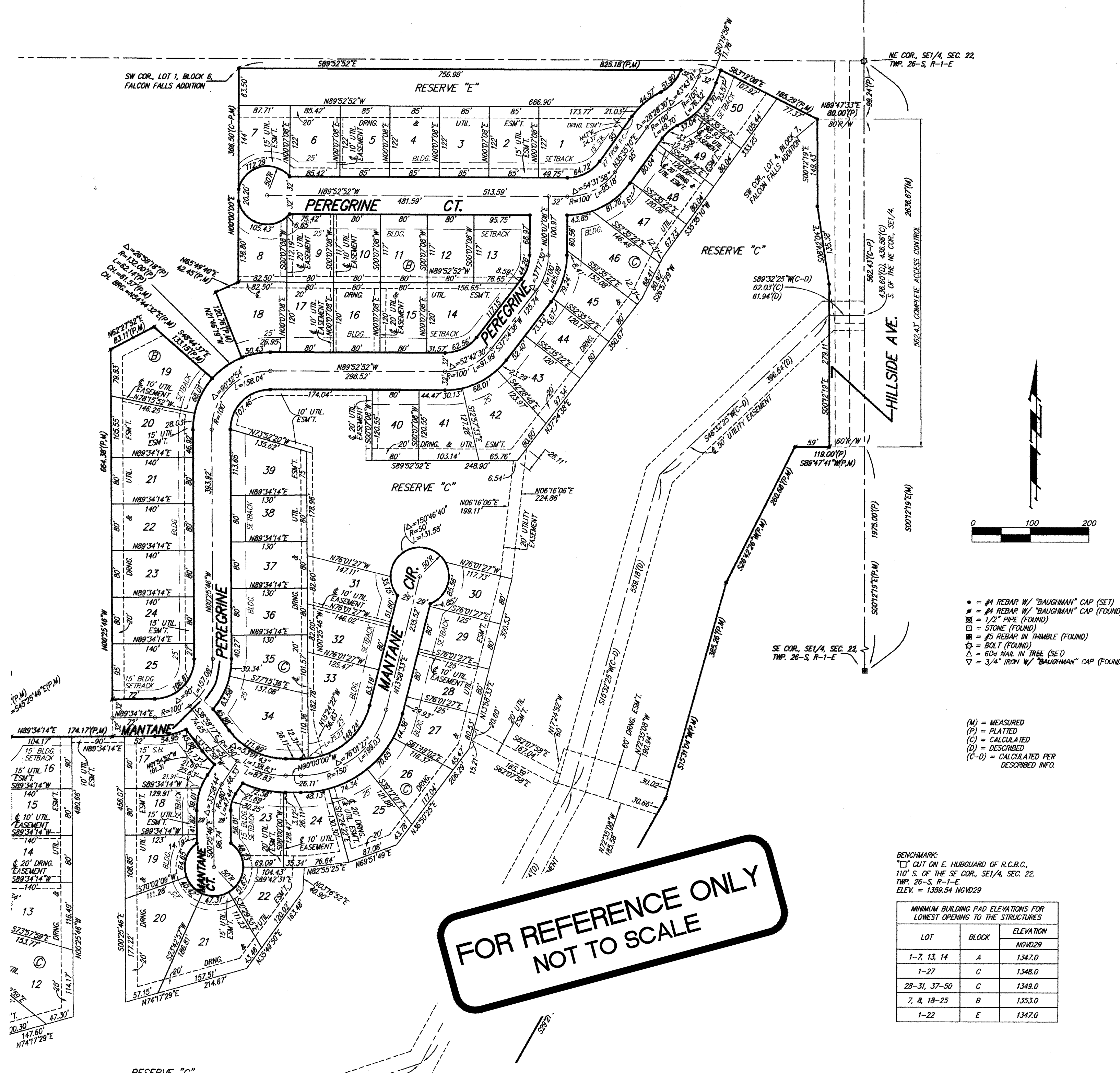


FALCON FALLS 3RD ADDITION

WICHITA, SEDGWICK COUNTY, KANSAS



**FOR REFERENCE ONLY
NOT TO SCALE**

BENCHMARK:
 CUT ON E. HIGHLAND OF R.C.B.C.,
 110' S. OF THE SE COR., SE 1/4, SEC. 22,
 TWP. 26-S, R-1-E
 ELEV. = 1359.54 NGVD29

MINIMUM BUILDING PAD ELEVATIONS FOR LOWEST OPENING TO THE STRUCTURES		
LOT	BLOCK	ELEVATION
1-7, 13, 14	A	1347.0
1-27	C	1348.0
28-31, 37-50	C	1348.0
7, 8, 18-25	B	1353.0
1-22	E	1347.0

NOTE:
 NO BUILDING PERMITS ARE TO BE ISSUED FOR LOTS 5-9 AND 13, BLOCK A, LOTS 8 AND 17-19, BLOCK B, LOTS 14, 15, 17, 31, 35-39 AND 43-49, BLOCK C, LOTS 6 AND 7, BLOCK D, AND LOTS 2-11, 17 AND 18, BLOCK E, WITHIN FALCON FALLS 3RD ADDITION UNLESS THE LOWEST FLOOR, INCLUDING THE BASEMENT, CAN BE CONSTRUCTED AT LEAST ONE FOOT ABOVE THE BASE FLOOD ELEVATION OR UNLESS THE CITY OF WICHITA, KANSAS HAS RECEIVED A LETTER OF MAP REVISION FROM THE FEDERAL EMERGENCY MANAGEMENT AGENCY.

NOTE:
 NO BUILDING PERMITS ARE TO BE ISSUED FOR LOTS 1-4 AND 10-12, BLOCK A, LOTS 1-13, 18-30 AND 32-34, BLOCK C, AND LOTS 1 AND 19-22, BLOCK E, WITHIN FALCON FALLS 3RD ADDITION UNLESS A LETTER OF MAP REVISION FROM THE FEDERAL EMERGENCY MANAGEMENT AGENCY IS ON FILE WITH THE CITY OF WICHITA, KANSAS.

NOTE:
 A master grading plan for drainage has been developed for this subdivision and is on file with the City of Wichita, Kansas. All drainage easements, right-of-ways, or reserves shall remain established grades or as modified with the approval of the City Engineer of the City of Wichita, Kansas. No obstructions which impede the flow of this drainage system shall be allowed.

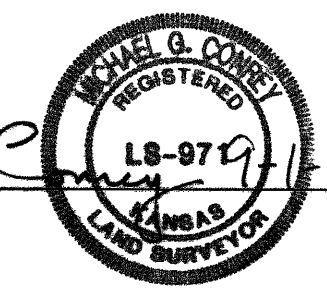
State of Kansas) SS We, *Baughman Company, P.A.*, Surveyors in
 Sedgwick County) and state do hereby certify that we have surveyed and
 platted "FALCON FALLS 3RD ADDITION", Wichita, Sedgwick County, Kansas
 and that the accompanying plat is a true and correct exhibit of the
 property surveyed, described as the SE 1/4 of Sec. 22, Twp. 26-S, R-1-E
 of the 6th P.M., Sedgwick County, Kansas, except that part platted as
 Falcon Falls Addition, Wichita, Sedgwick County, Kansas, and except that
 part platted as Falcon Falls 2nd Addition, Wichita, Sedgwick County,
 Kansas, and except that part platted as Falcon Falls Commercial Addition,
 Wichita, Sedgwick County, Kansas, and except that part condemned for
 K-254 Highway in Condemnation Case No. B-19603, all being subject to
 road rights-of-way of record.
 Existing public easements and dedications
 being vacated by virtue of K.S.A. 12-512(b).
Baughman Company, P.A.

This plat of "FALCON FALLS 3RD ADDITION",
 Wichita, Sedgwick County, Kansas has been submitted to and approved by
 the Wichita-Sedgwick County Metropolitan Area Planning Commission,
 Wichita, Kansas.
 Dated this 25th day of September, 2005.
 Wichita-Sedgwick County Metropolitan Area Planning Commission

Morris K. Dunlap, Chair
John L. Schlegel, Secretary



Michael G. Conroy, 2005, Surveyor
 Michael G. Conroy



Know all men by these presents that we,
 the undersigned, have caused the land in the surveyors certificate to be
 platted into Lots, Blocks, Streets, and Reserves to be known as "FALCON
 FALLS 3RD ADDITION", Wichita, Sedgwick County, Kansas. The utility
 easements are hereby granted as indicated for the construction and
 maintenance of all public utilities. The drainage and utility easements are
 hereby granted as indicated for drainage purposes and for the
 construction and maintenance of all public utilities. The drainage
 easements are hereby granted as indicated for drainage purposes. The
 streets are hereby dedicated to and for the use of the public. Reserve
 "A" is reserved for landscaping, streets, open space, entry monuments,
 drainage purposes, and utilities. Reserve "B" is reserved for landscaping,
 open space, berms, pipelines as confined to easements, and drainage
 purposes. Reserve "C" is reserved for sidewalks, landscaping, open space,
 floodway, lakes, drainage purposes, and utilities as confined to easements.
 Reserve "D" is reserved for sidewalks, landscaping, open space, lakes,
 drainage purposes, and utilities as confined to easements. Reserve "E" is
 reserved for sidewalks, landscaping, open space, and drainage purposes.
 Reserves "A", "B", "C", "D" and "E" shall be owned and maintained by the
 homeowners association for the addition. Access controls shall be as
 depicted on the face of the plat and are hereby granted to the City of
 Wichita, Kansas. The Minimum Building Pad Elevations for the lowest
 opening to the structures shall be as indicated on the face of the plat.

Heights, LLC
Jay W. Russell, Member

State of Kansas) SS The foregoing instrument acknowledged before
 Sedgwick County) me, this 13th day of SEPTEMBER, 2005, by *Jay W. Russell*, Member of
 Heights, LLC, on behalf of the limited liability company.

Judith M. Terhune, Notary Public
 My App't. Exp. 11-7-05

We the undersigned holders of a mortgage on the
 above described property, do hereby consent to this plat of "FALCON
 FALLS 3RD ADDITION", Wichita, Sedgwick County, Kansas.
 Chisholm Trail State Bank

Elmer S. Peters, Jr., EVP
 (Time)

State of Kansas) SS The foregoing instrument acknowledged be-
 fore me, this 27th day of SEPTEMBER, 2005, by *ELMER S. PETERS, JR.*,
 EXEC. V.P. of Chisholm Trail State Bank, on behalf of the bank.

Judith M. Terhune, Notary Public
 My App't. Exp. 11-7-05

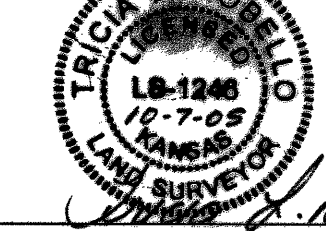
This plat approved and all dedications
 shown hereon accepted by the City Council of the City of Wichita,
 Kansas, this 8 day of November, 2005.

Carlos Myers, Mayor
Patsy E. Allen, Deputy City Clerk
 for *Karen Sublett*



Reviewed in accordance with K.S.A. 58-2005
 on this 7th day of October, 2005.

Tricia L. Robella, L.S. #1246
 Deputy County Surveyor
 Sedgwick County, Kansas



Entered on transfer record this 9th day
 of December, 2005.

Don Brace, County Clerk



State of Kansas) SS This is to certify that this plat has been
 Sedgwick County) filed for record in the office of the Register of Deeds, this 12th day
 of December, 2005 at 4:34:15 o'clock P.M. and is duly recorded.

Bill Meek, Register of Deeds

Tonya Buckingham, Deputy
 (Time)