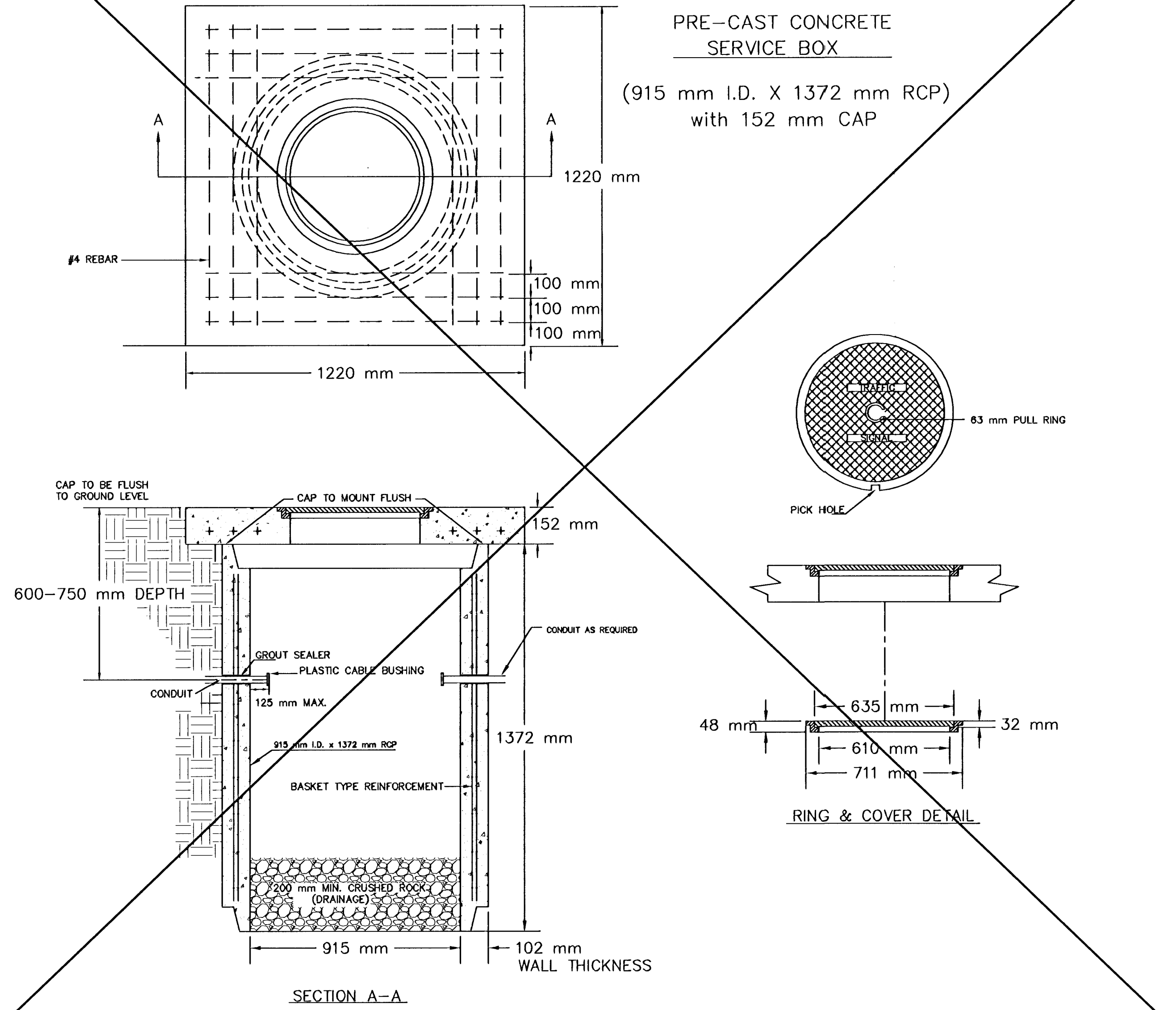
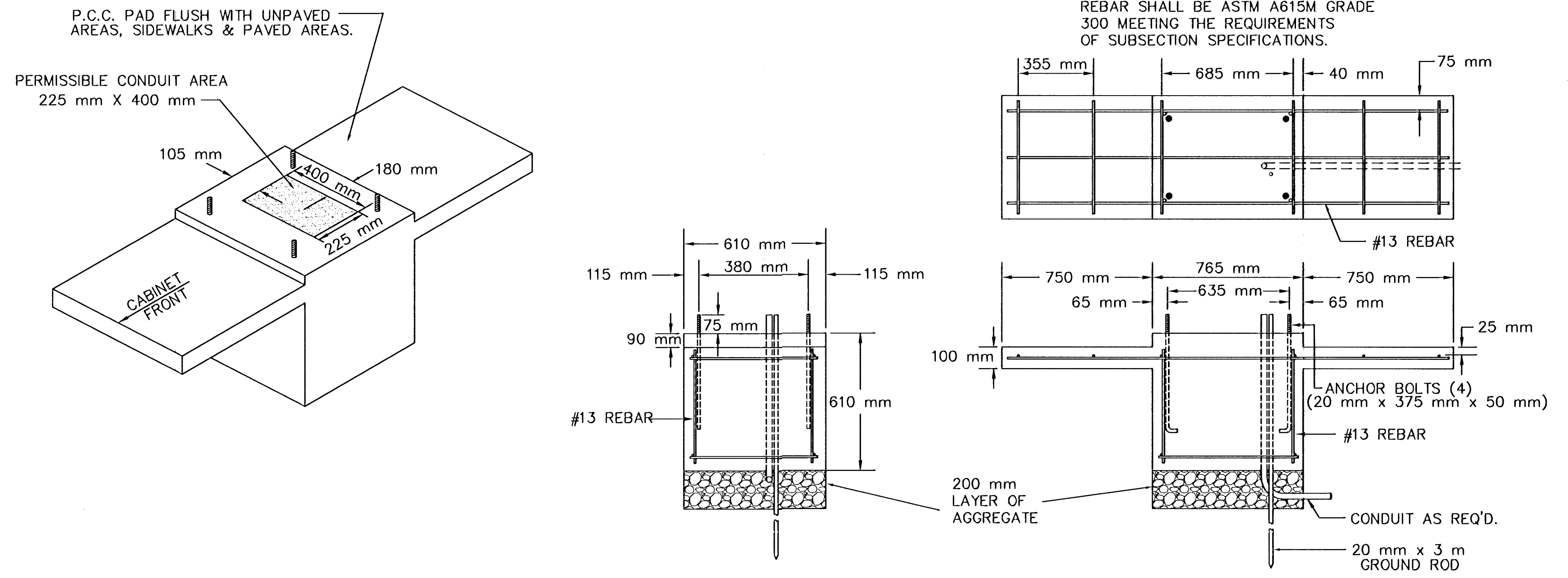


SERVICE BOX CONSTRUCTION/INSTALLATION DETAILS

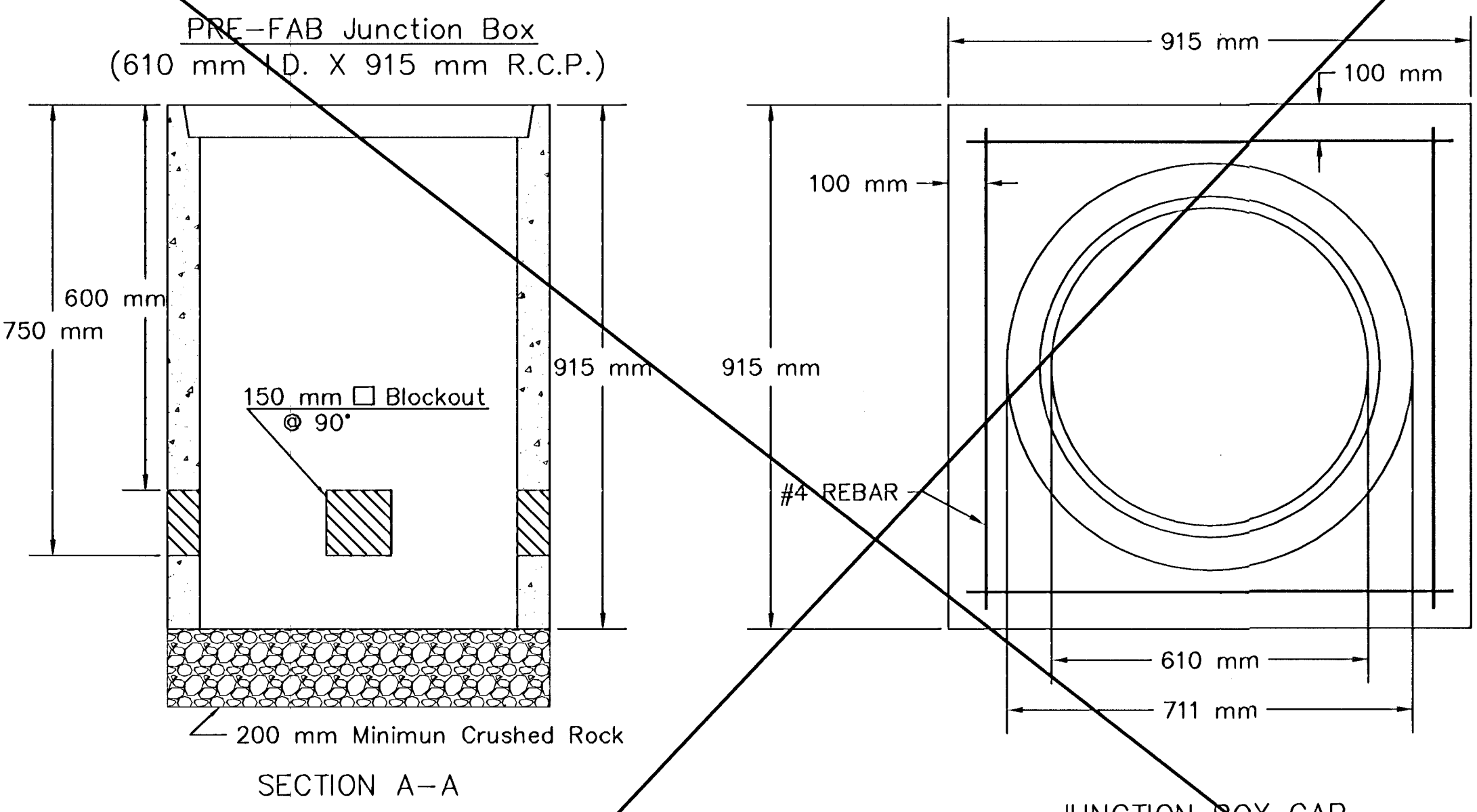


170 CONTROLLER PAD DETAILS

STATE	PROJECT NO.	YEAR	SHEET NO	TOTAL SHEETS
KANSAS	472-83519-PHASE II	2003	7	9



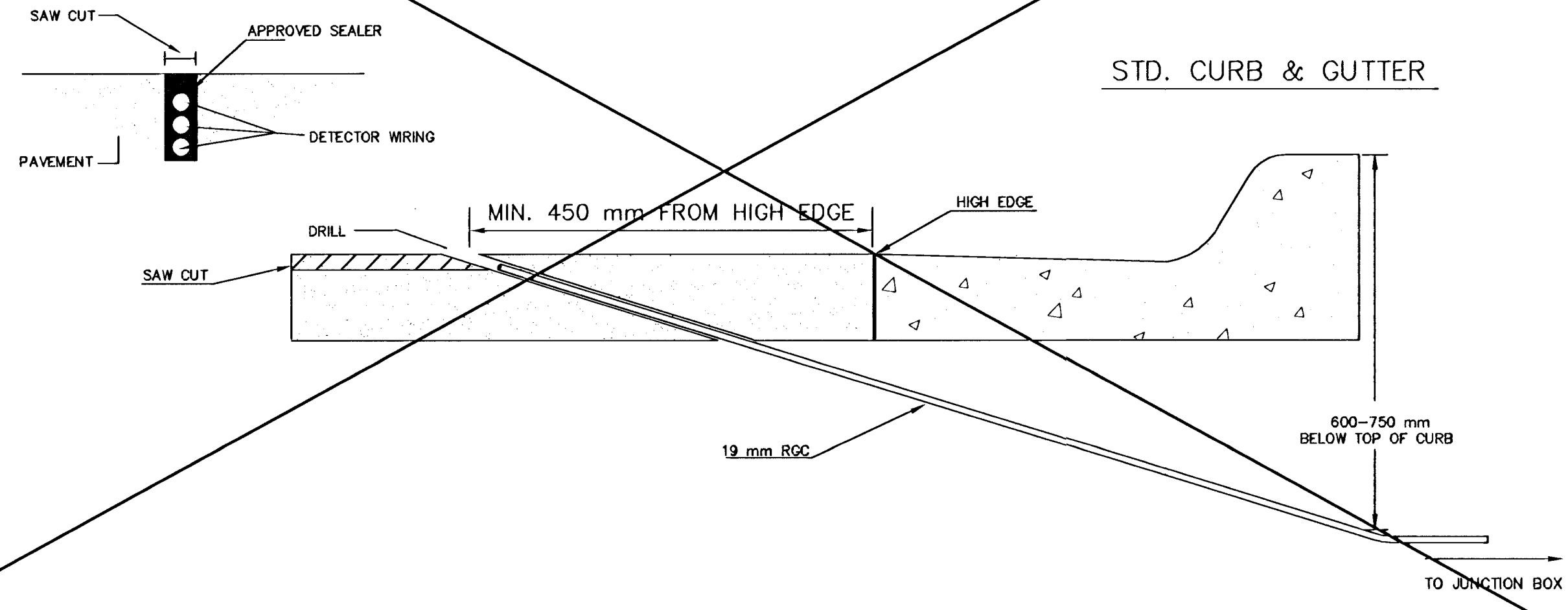
JUNCTION BOX DETAILS



NOTES:

- SERVICE & JUNCTION BOX:**
- CONDUIT CONNECTION TO BE FLUSH TO WITHIN 125 mm OF INSIDE FACE OF SIDE WALL, CONDUIT TO DRAIN INTO SERVICE BOX.
 - CONDUIT CONNECTIONS TO SERVICE BOX SHALL BE TERMINATED WITH PLASTIC CABLE BUSHING.
 - CONDUIT SHALL BE SEALED WITH APPROVED SEALER AT INSIDE WALL FACE.
 - ALL SERVICE & JUNCTION BOXES TO HAVE 200 mm OF CRUSHED ROCK.
- TRENCHING:**
- DEPTH TO BE 750 mm MINIMUM WITH ROCK & STUBBLE FREE BACKFILL TO SERVE AS BEDDING MATERIAL. MAINTAIN MINIMUM CONDUIT DEPTH IN TRENCH.
 - BACKFILL TO BE COMPACTED IN 150 mm LOOSE LIFTS BY HAND OR MECHANICAL TAMPING TO A 95% STANDARD DENSITY.
- CONDUIT:**
- SLOPE CONDUIT TO DRAIN AS DIRECTED BY THE ENGINEER.
 - 75 mm RIGID STEEL CONDUIT BTWN. SERVICE BOXES.
30 mm " " " BTWN. SERVICE & JUNCTION BOXES.
20 mm " " " BTWN. JUNCTION BOXES.
20 mm " " " BTWN. JUNCTION BOX & DETECTOR LOOP SAW CUT

CONDUIT/DETECTOR WIRE INSTALLATION DETAILS



JUNCTION BOX CAP
915 mm x 915 mm x 152 mm
TOP OF CAP TO BE FLUSH WITH GROUND LEVEL.

** SEE SERVICE BOX INSTALLATION FOR RING & COVER DETAILS.

REV. DATE	COMMENTS	INT

PROJECT DESCRIPTION
SERVICE/JUNCTION BOX, CONTROLLER PAD CONSTRUCTION/INSTALLATION DETAILS

PROJECT NUMBER
472-83519-PHASE II

DRAWN BY: T.M. APPROVED BY: DATE: DATE: DATE:
DATE: Feb. 96

CITY OF WICHITA
DEPARTMENT OF PUBLIC WORKS

TRAFFIC ENGINEERING DIVISION SCALE
WM. G. MCKINLEY TRAFFIC ENGINEER NO SCALE

DATE	
BY	
REFERENCES NOTED	
REFERENCES CHECKED	