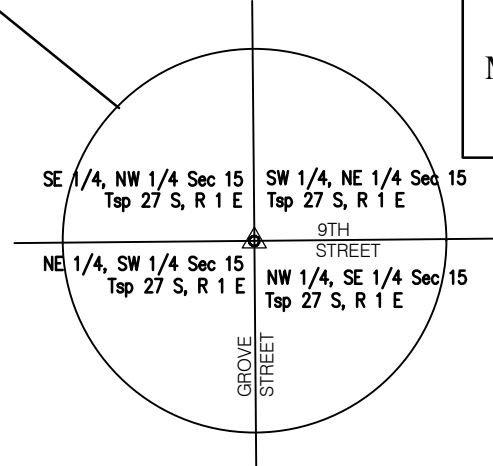


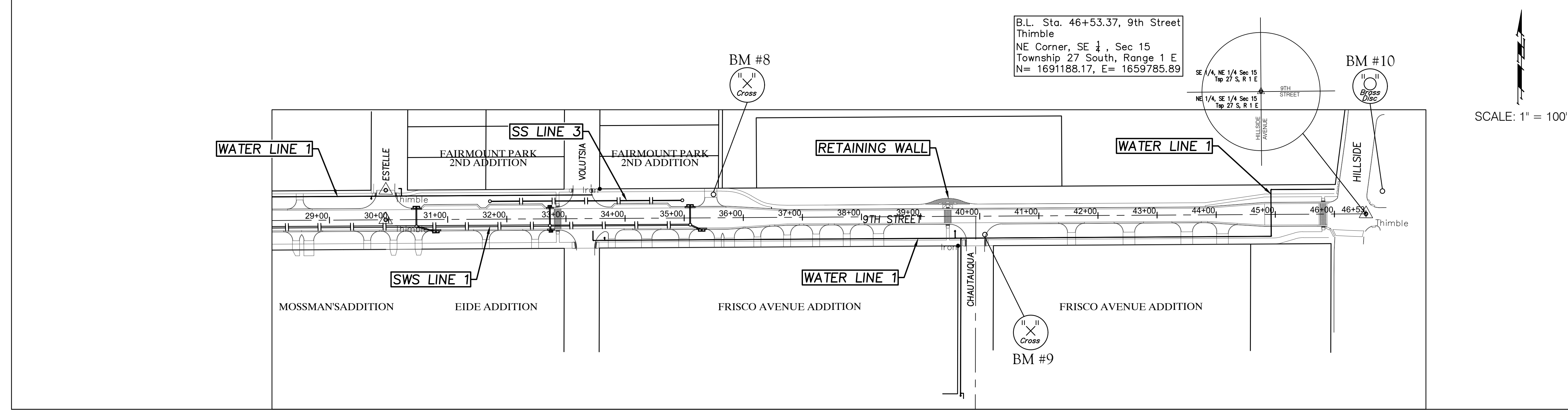
B.L. Sta. 6+80.41, 9th Street
Thimble
NE Corner, SW 1/4, Sec 15
Township 27 South, Range 1 E
N= 1691094.19, E= 1655814.04



B.L. Sta. 20+00.00, 9th Street
Thimble
NW Corner, SE 1/4, Sec 15
Township 27 South, Range 1 E
N= 1691125.72, E= 1657133.26

SCALE: 1" = 100'

POINT TABLE				
POINT #	RAW DESCRIPTION	NORTHING	EASTING	ELEVATION
1	cp-r4	1691094.8920	1657094.3600	1308.47
2	cp-r4	1691211.3007	1659621.5499	1332.91
4	ip-3-4	1691486.5858	1657158.6479	1309.54
5	r4-savoy	1691068.8491	1656849.0763	1307.54
6	cp-cross-bm-88	1691071.8078	1656843.5019	1307.43
7	v-noctch-bm	1691160.7970	1656503.9524	1305.10
8	th-1	1691152.2859	1656145.1520	1303.59
9	cp-cross-bm	1691151.4001	1656115.2923	1303.82
10	th-1	1691094.1946	1655814.0421	1302.48
11	cp-cross-bm	1691158.5595	1655842.5467	1303.27
12	th-1	1691183.4657	1657467.5710	1310.30
13	r-6	1691182.8345	1657442.6057	1310.31
14	cp-cross-bm-88	1691188.1150	1657444.3740	1310.88
15	th-3-4	1691191.2009	1657797.6004	1312.11
16	cp-cross-bm	1691183.7311	1657827.5227	1313.38
17	ip-1	1691207.7722	1658489.3451	1319.20



B.L. Sta. 46+53.37, 9th Street
Thimble
NE Corner, SE 1/4, Sec 15
Township 27 South, Range 1 E
N= 1691188.17, E= 1659785.89

SCALE: 1" = 100'

CONTROL POINTS:

BENCHMARKS:

POINT TABLE				
POINT #	RAW DESCRIPTION	NORTHING	EASTING	ELEVATION
18	sta-hub	1691188.1249	1658484.3555	1318.96
30	th-5-8in iron	1691125.7240	1657133.2578	1308.35
31	ip-1	1691092.0876	1657823.3869	1314.26
32	th-1in top iron is bm	1691199.1673	1658127.3620	1314.83
33	sta-mmx	1691197.4560	1658220.1027	1317.57
34	th-1-1-2in iron	1691149.1596	1658128.1305	1315.05
35	ip-1-2	1691122.2000	1659096.9850	1325.88
37	cp-cross-bm	1691201.6572	1658681.5758	1320.68
38	cp-cross-bm	1691141.7945	1659141.8812	1325.55
39	sta-hub	1691208.9955	1659047.3120	1336.95
40	th-5-8	1691188.1750	1659785.8896	1333.93
41	sta mmx	1691211.8604	1659790.3223	1334.94
42	bm-cowdisc-88	1691227.0142	1659812.9810	1335.34
50	cp-cross-bm-88	1691128.8880	1655463.0668	1303.05
51	ip-1	1691136.3052	1655486.8711	1302.20
52	ip-1-2	1691037.6213	1655529.8484	1302.57

POINT TABLE				
POINT #	RAW DESCRIPTION	NORTHING	EASTING	ELEVATION
200	vcp-8" 3	1690996.3879	1659108.5374	1313.68
201	vcp-8" 7	1690996.3879	1659106.3374	1313.35
202	testwell-box	1690889.2128	1654564.7167	1302.22
203	fl-cmp-12" 6	1690796.4828	1654552.1654	1301.50
204	fl-cmp-12" 6	1690872.5458	1654532.2262	1301.74
205	fl-cmp-12" 2	1690868.7177	1654518.6716	1300.25
206	fl-rcp-24" 48	1690868.9981	1654517.3807	1296.93
300	bm1-ne-bolt-top signbase-88	1691075.9722	1657165.9877	1310.67
302	res	1691175.8343	1657631.7027	1312.24
303	res	1691084.8766	1657903.1641	1315.45
304	res	1691114.1014	1658157.1001	1317.04
350	res	1691078.8153	1656603.1668	1305.60
351	res	1691152.0018	1656433.9403	1304.80
352	res	1691073.7829	1656243.6864	1304.12
353	res	1691046.1035	1655646.0991	1303.33
355	res	1691123.7059	1655454.8240	1303.46

POINT TABLE				
POINT #	RAW DESCRIPTION	NORTHING	EASTING	ELEVATION
380	cp-bm-cross-88	1691141.8000	1659141.8600	1325.55
381	sta mmx	1691106.1092	1659138.4733	1325.16
382	cp-bm-cross-88	1690856.6388	1659152.2049	1325.07
383	res	1691114.4023	1655372.9634	1302.68
384	cp-bm-cross-88	1691048.1646	1654942.9186	1305.01
385	bm-cowdisc-88	1691042.0674	1654793.1331	1306.27
386	sta mmx	1690989.0901	1654526.5163	1306.49
387	res	1690789.1155	1654549.6891	1304.16

- BM #1 - Chiseled "X" in the Sidewalk, 27' West of the Centerline of Minnesota and 43' North of the 9th Street Baseline. Elev. = 1303.05 (NAVD 88)
- BM #2 - Chiseled "X" in the Sidewalk, 27' East of the Centerline of Platt and 64' North of the 9th Street Baseline. Elev. = 1303.27 (NAVD 88)
- BM #3 - Chiseled "X" in the Sidewalk, 30' West of the Centerline of Ash and 50' North of the 9th Street Baseline. Elev. = 1303.82 (NAVD 88)
- BM #4 - Chiseled "X" in the Sidewalk, 40' East of the Centerline of Spruce and 46' South of the 9th Street Baseline. Elev. = 1307.43 (NAVD 88)
- BM #5 - Top of a the NE-most Bolt in the Base of the Sign Located on the Southeast Corner of the 9th & Grove Intersection, 40' East of the Centerline of Spruce and 46' South of the 9th Street Baseline. Elev. = 1310.67 (NAVD 88)

- BM #6 - Chiseled "X" in the Sidewalk, 23' West of the Centerline of Poplar and 55' North of the 9th Street Baseline. Elev. = 1310.88 (NAVD 88)
- BM #7 - Chiseled "X" in the Sidewalk, 30' East of the Centerline of Green and 41' North of the 9th Street Baseline. Elev. = 1313.38 (NAVD 88)
- BM #8 - Chiseled "X" in the Sidewalk, 220' East of the Centerline of Volutsia and 40' North of the 9th Street Baseline. Elev. = 1320.68 (NAVD 88)
- BM #9 - Chiseled "X" in the East Curb Return of Chautauqua, 31' South of the 9th Street Baseline. Elev. = 1325.55 (NAVD 88)
- BM #10 - City of Wichita Benchmark Disc on the North Side section of the Drainage Box Located 50' East of the Centerline of Hillside and 38' North of the 9th Street Baseline. Elev. = 1335.34 (NAVD 88)

Drawing File: E:\Projects\9th Street Corridor_16-02-E407\Civil 3D\Basemap
 Design: LP
 Drawn: LP
 Approved: T Alieri
 Scale: NOTED

Project No. 16-02-E407
 CAPITAL IMPROVEMENT PROJECT
 9TH STREET CORRIDOR
 KEYSHEET
 9TH STREET (H-35 to HILLSIDE)

