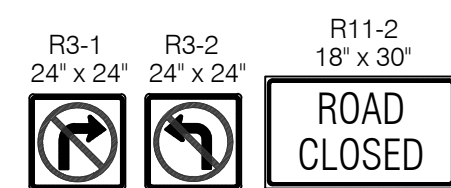
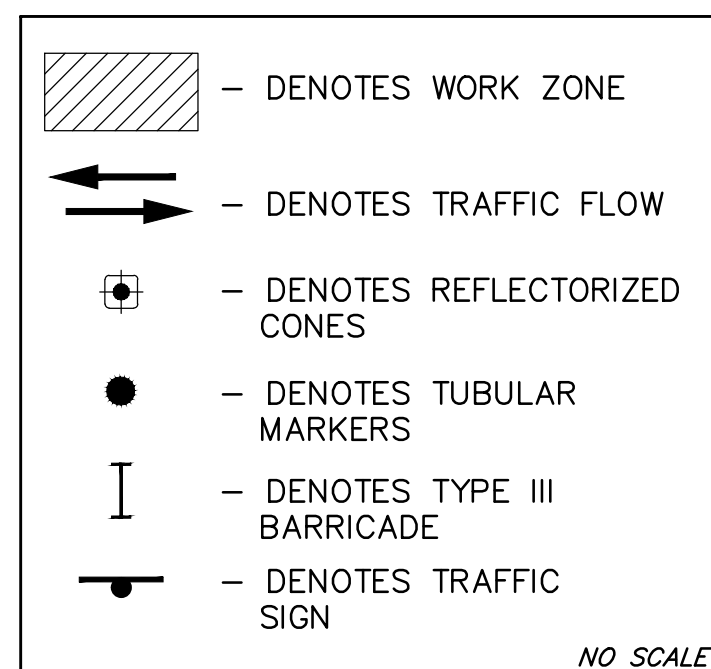


TRAFFIC CONTROL PLAN
LEGEND



NOTE: Add Proper Signage during Construction of Side Street Valley Gutters as Needed

NOTE: No Two Adjacent Side Streets Shall Be Closed during Construction

PHASE 3

Drawing File: E:\Projects\9th Street Corridor 16-02-E407\Civil 3D\Basemap

Project No. 16-02-E407 CAPITAL IMPROVEMENT PROJECT

Design: LP
Drawn: LP
Approved: T Alieri
Scale: NOTED

CONSTRUCTION SEQUENCING
PHASE 3
9TH STREET (I-15 to HILLSIDE)

Baughman Company, P.A.
315 Ellis St. Wichita, KS 67211 P 316-262-7271 F 316-262-0149
ENGINEERING | SURVEYING | PLANNING | LANDSCAPE ARCHITECTURE

September, 2017

SHEET
51
OF
110

9TH STREET
STA. 3+00.00 to 13+00.00
1" = 40'