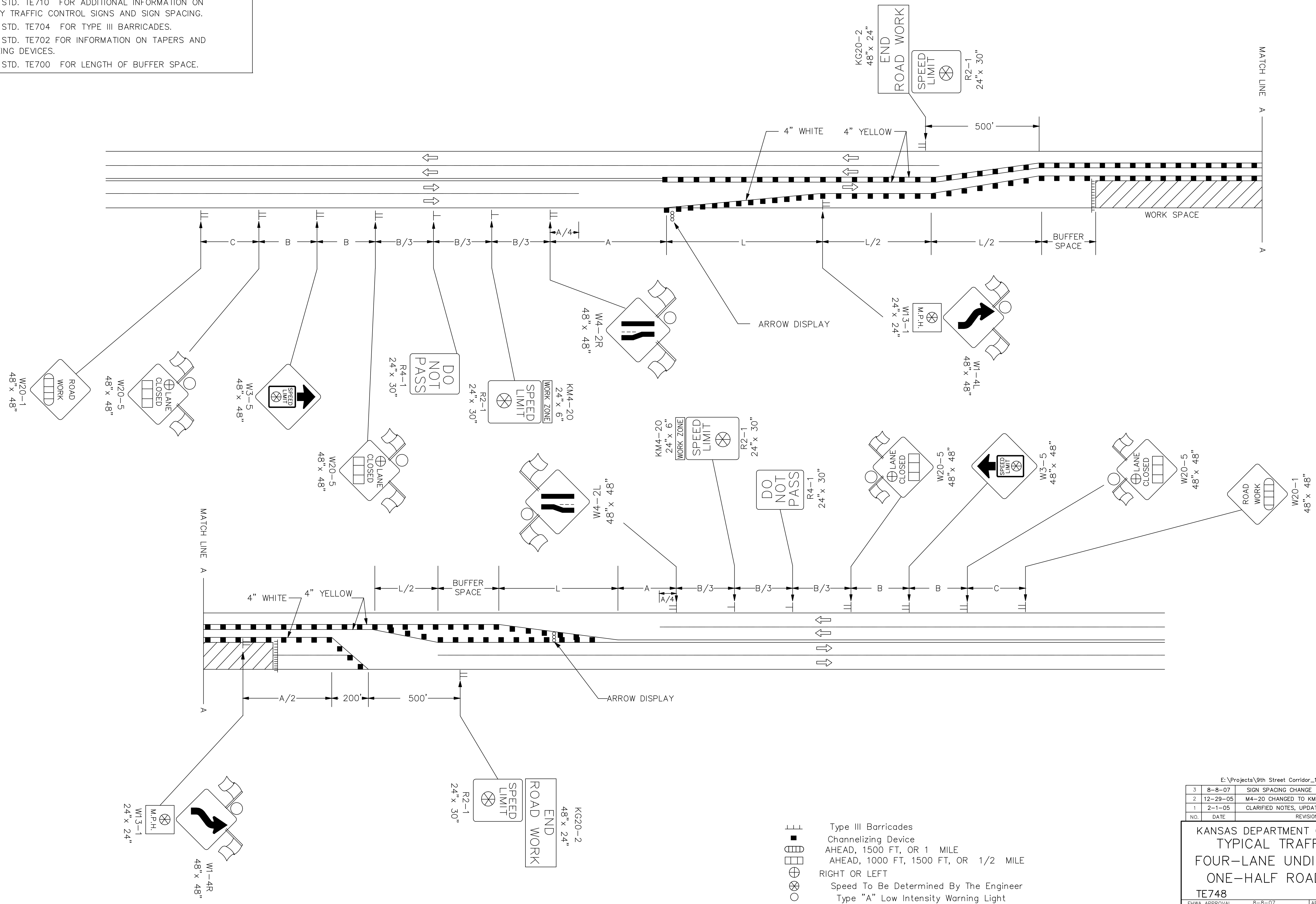


REFER TO STD. TE710 FOR ADDITIONAL INFORMATION ON TEMPORARY TRAFFIC CONTROL SIGNS AND SIGN SPACING.
 REFER TO STD. TE704 FOR TYPE III BARRICADES.
 REFER TO STD. TE702 FOR INFORMATION ON TAPERS AND CHANNELIZING DEVICES.
 REFER TO STD. TE700 FOR LENGTH OF BUFFER SPACE.



E:\Projects\9th Street Corridor_16-02-E407\DETAILS

3	8-8-07	SIGN SPACING CHANGE	M.B.	A.A.A.
2	12-29-05	M4-20 CHANGED TO KM4-20	M.B.	A.A.A.
1	2-1-05	CLARIFIED NOTES, UPDATED WARNING SIGNS	B.H.	A.A.A.
NO.	DATE	REVISION	BY	APP'D

**KANSAS DEPARTMENT OF TRANSPORTATION
 TYPICAL TRAFFIC CONTROL
 FOUR-LANE UNDIVIDED HIGHWAY
 ONE-HALF ROADWAY CLOSED
 TE748**

FHWA APPROVAL	8-8-07	APP'D Anthony A. Airobaire	
DESIGNED B.A.H.	DETAILED B.A.H.	QUANTITIES	TRACED
DESIGN CK.	DETAIL CK.	QUAN. CK.	TRACE CK.